

43655
 Filed for Record this 6th day of
 - October - 1966 at 2:00 P.M.
 in Book 15 of Surveys, at Page
 131 - San Joaquin County Records,
 at the request of Chas. H. Widdows.
 Fees \$5.00

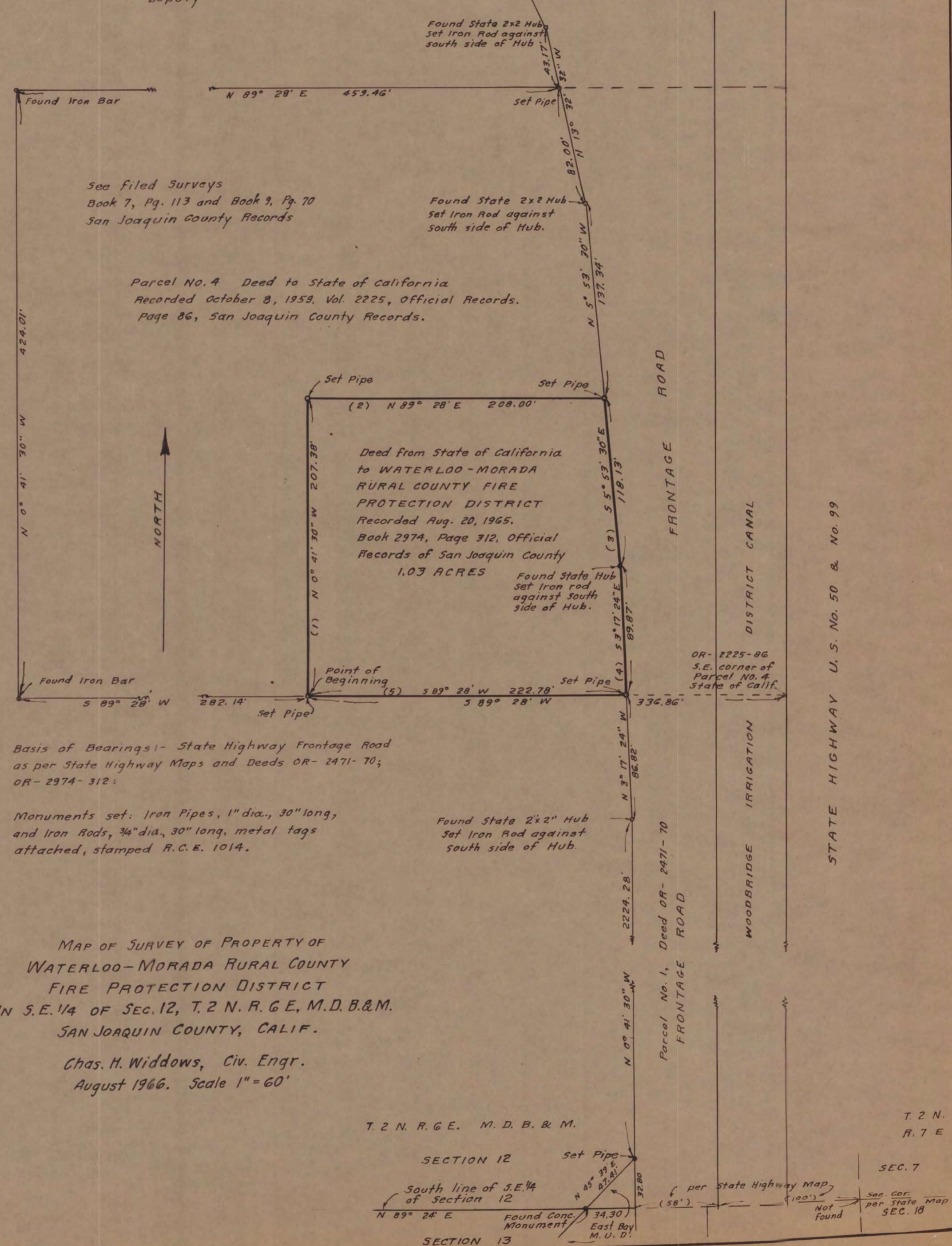
George H. Chopman
 County Recorder
 By Ruby Pascoe
 Deputy

This map has been examined
 for conformance with the
 requirements of the Land
 Surveyors' Act this 30th
 day of - Sept - 1966.

Elemer A. Plecas
 County Surveyor

This map correctly represents a
 Survey made by me or under my
 direction, in conformance with
 the requirements of the Land
 Surveyors' Act at the request
 of Dan Brandstad for Waterloo-
 Morada Rural County Fire Protection
 District in August 1966.

Chas. H. Widdows
 Civil Engineer, R.C.E. 1014

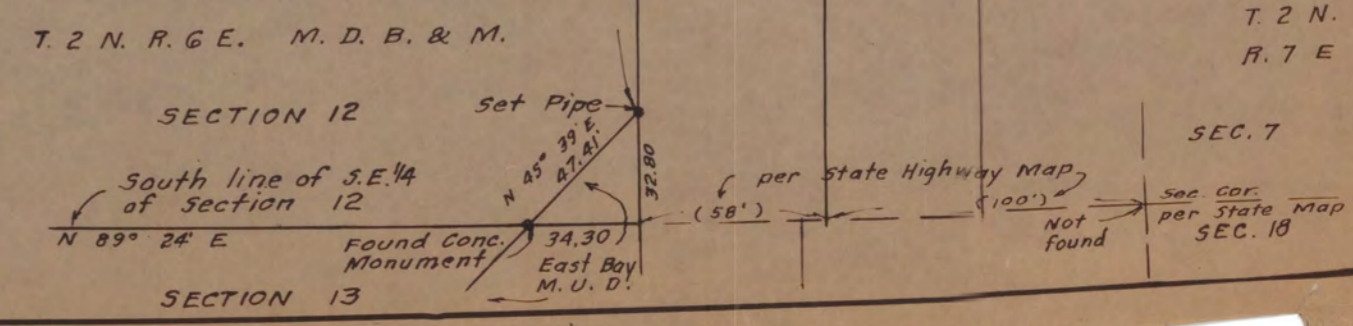


Basis of Bearings: State Highway Frontage Road
 as per State Highway Maps and Deeds OR-2471-70;
 OR-2974-312:

Monuments set: Iron Pipes, 1" dia., 30" long,
 and Iron Rods, 3/4" dia., 30" long, metal tags
 attached, stamped R.C.E. 1014.

MAP OF SURVEY OF PROPERTY OF
 WATERLOO-MORADA RURAL COUNTY
 FIRE PROTECTION DISTRICT
 IN S.E. 1/4 OF SEC. 12, T. 2 N. R. 6 E, M. D. B. & M.
 SAN JOAQUIN COUNTY, CALIF.

Chas. H. Widdows, Civ. Engr.
 August 1966. Scale 1" = 60'



15-131

15-131