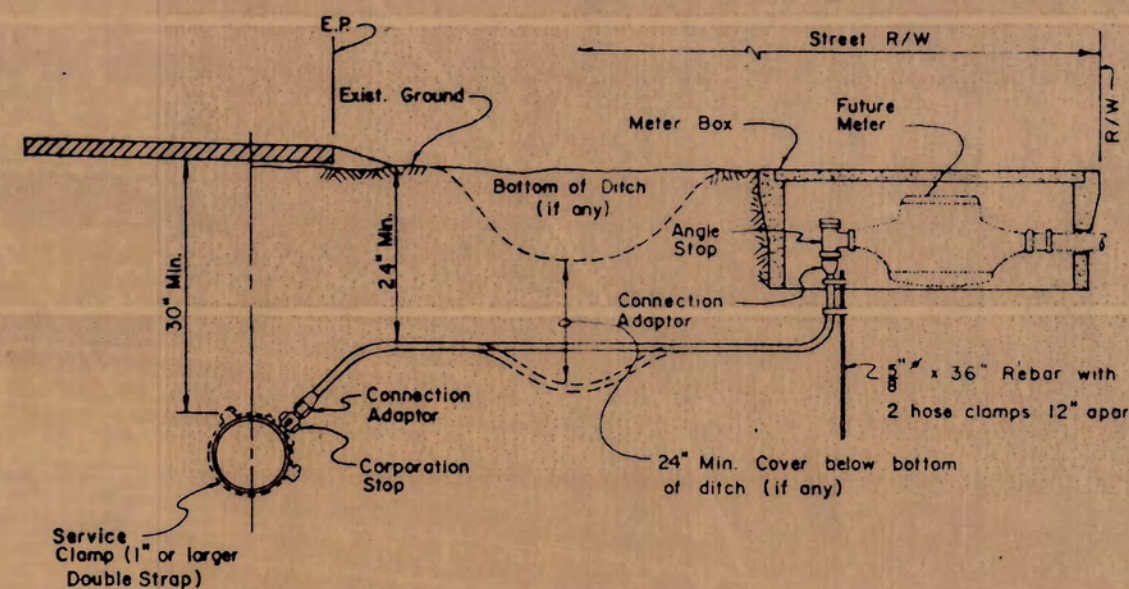


- NOTES:**
1. Fire Hydrants shall be placed with $4\frac{1}{2}$ " outlet facing directly towards the street.
 2. Fire Hydrants shall be clean and free of concrete.
 3. Residential Fire Hydrant to be "Rich 950", James Jones J-3765, or approved equal (2-2" & 1-1/2" outlets)
 - * Or other size as required by the local Fire District.
 4. Painted color as required by local Fire Districts.

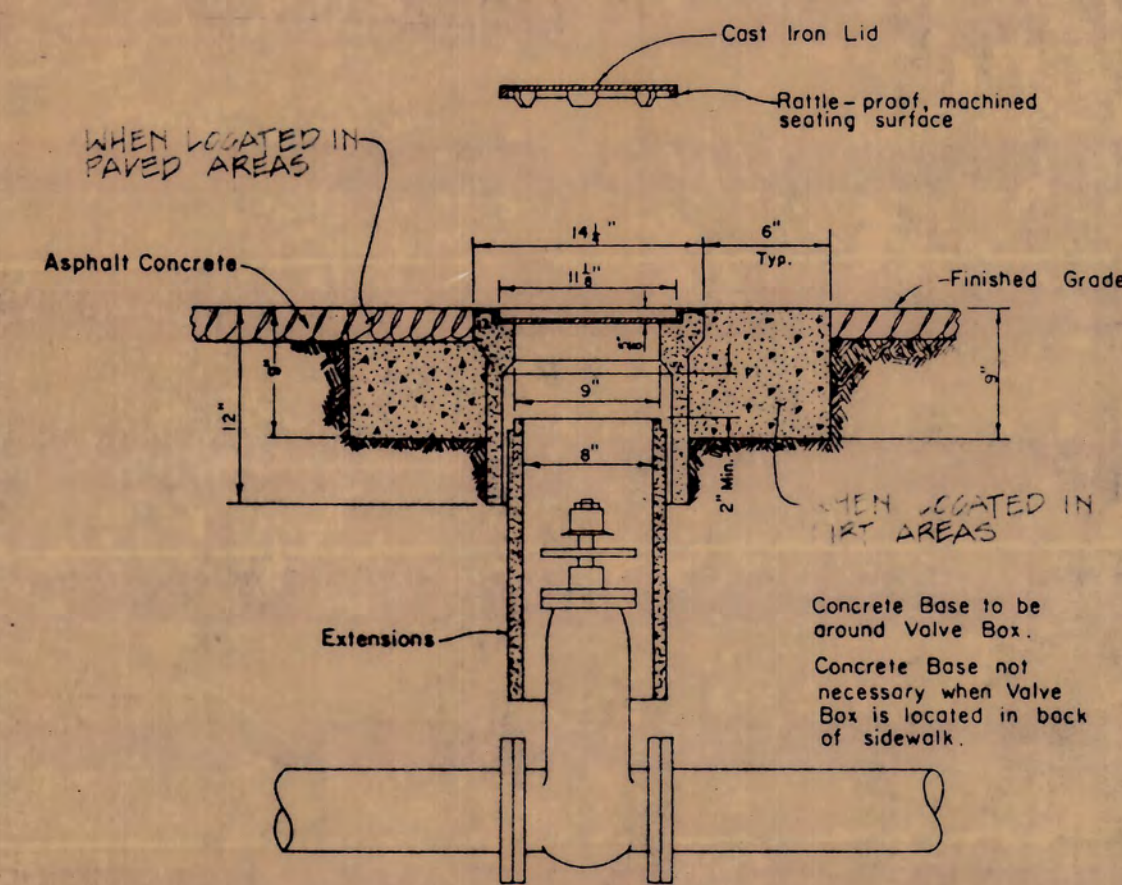
FIRE HYDRANT

NOTE:
ALL CASTINGS AND COVERS SHOULD BE LOCATED OUTSIDE THE PAVED ROADWAY IF AT ALL POSSIBLE. PAVING SHOW IN THESE DETAILS WOULD BE OMITTED.



- NOTES:**
1. Plastic pipe up to 1 1/2" I.D. service shall be ultra high molecular weight (UHMW) Polyethylene as manufactured by "Discopipe", "Orangeburg" or approved equal with minimum pressure rating of 160 psi.
 2. Plastic pipe for 2" I.D. service shall be PB 2110 Polybutylene or approved equal with minimum pressure rating of 160 psi.
 3. Corporation stop shall have corporation cock threads.
 4. Angle stop shall have swivel nut and lock wings.
 5. Angle stop shall be vertically plumbed.
 6. Size of service line shall be as required by the County.
 7. Mueller lasta-tite connection shall conform to ASTM Designation D 2239.

WATER SERVICE



- NOTES:**
1. Valve box and Lid shall be Christy No. G5, Brooks No.1RT or 4-TT, or equal.
 2. All Lids and Grade Rings shall have machined seating surfaces.
 3. Extensions shall be as manufactured for the Valve Box supplied or Pipe of correct size can be used.

VALVE BOX

COUNTY OF SAN JOAQUIN
DEPARTMENT OF PUBLIC WORKS

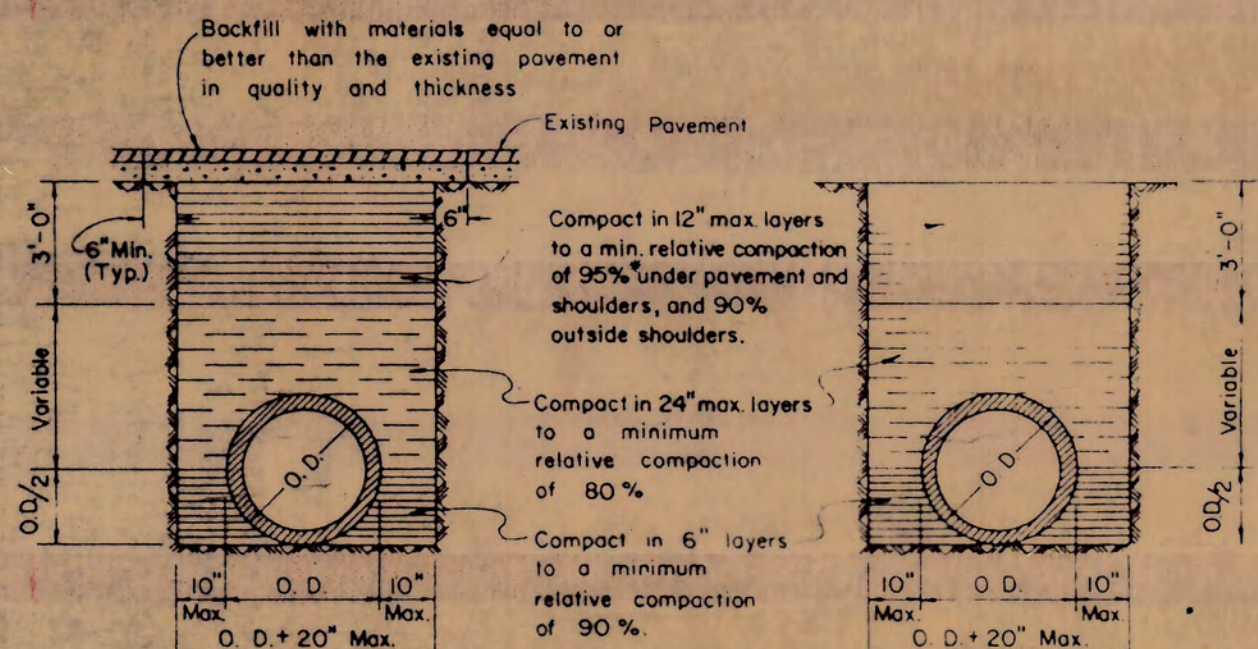
DATE: 6-19-84

APPROVED: *Mary M. Durata*
DIRECTOR OF PUBLIC WORKS

RUE NO. 21259

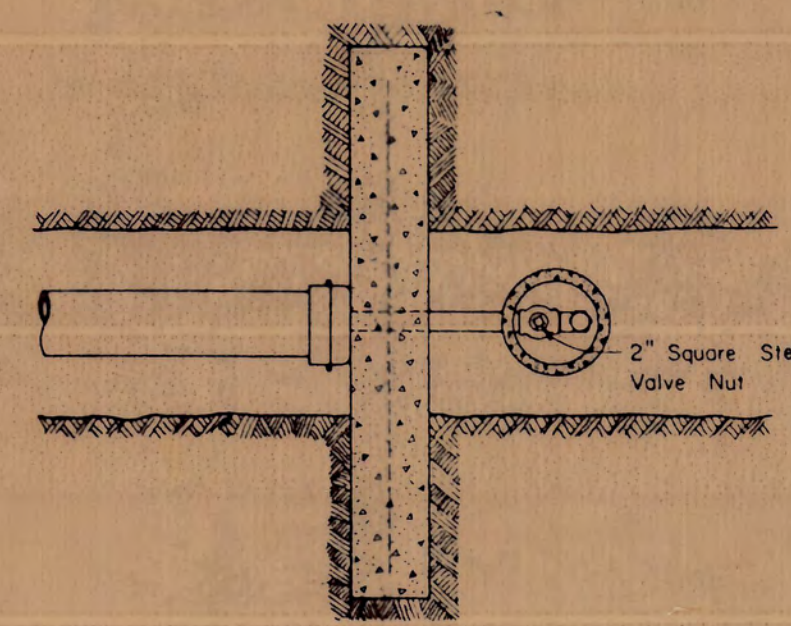
APPROVED REVISION DATE:

SAN JOAQUIN COUNTY
FELIZ WAY
STANDARD DETAILS

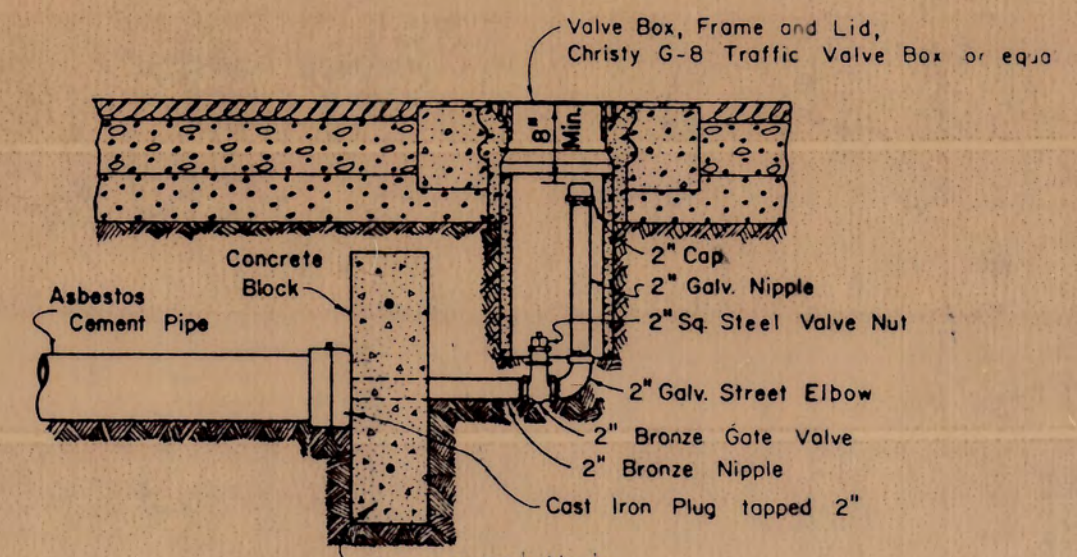


- NOTES:**
1. Relative compaction of materials shall be tested by the State of California, Dept. of Transportation Testing Manual, test method No. California 216 or 231.
 2. All existing pavement shall be neatly cut to line prior to trench excavation.
 3. No jacking or ponding shall be permitted within the street Right of Way.
 4. * When shown by soil composition and compactibility, ninety percent (90%) compaction may be used, when approved by the Director of Public Works.

TYP. TRENCH BACKFILL
NOT TO SCALE

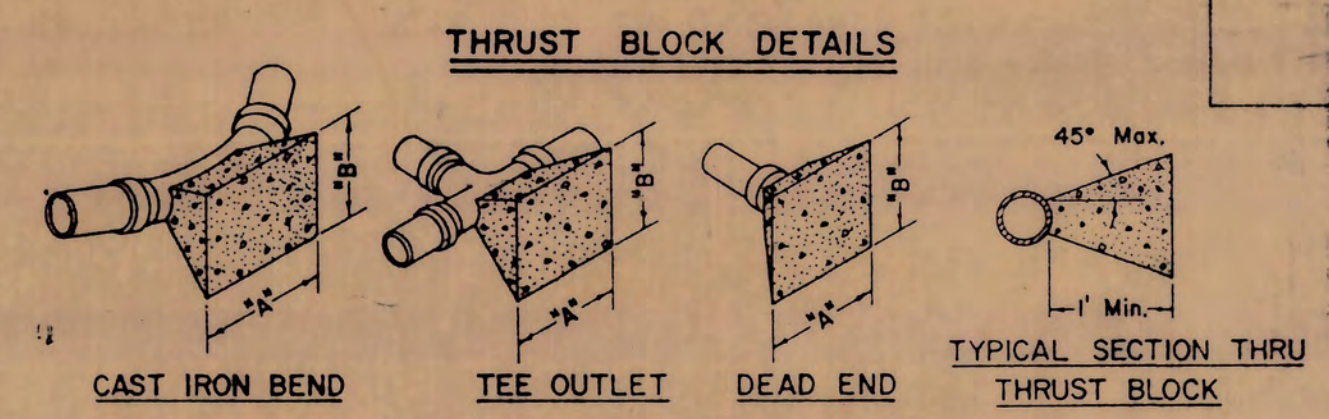


PLAN

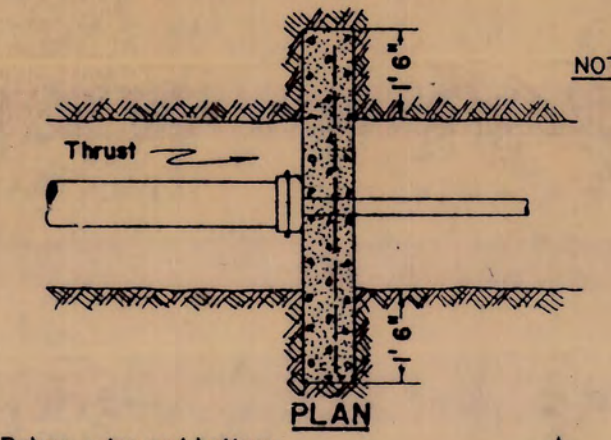


ELEVATION

PERMANENT BLOW OFF



THRUST BLOCK DIMENSIONS			
FITTINGS	"A"	"B"	FITTINGS
6" LINE			
22 1/2"	1'-6"	1'-6"	22 1/2"
45°	2'-0"	2'-0"	45°
90°	3'-0"	2'-6"	90°
TEE OUTLET	3'-0"	2'-0"	TEE OUTLET
DEAD END	3'-0"	2'-0"	DEAD END
8" LINE			
22 1/2"	2'-0"	2'-0"	22 1/2"
45°	3'-0"	2'-6"	45°
90°	4'-0"	3'-6"	90°
TEE OUTLET	3'-6"	3'-0"	TEE OUTLET
DEAD END	3'-6"	3'-0"	DEAD END
12" LINE			
22 1/2"	3'-0"	3'-0"	22 1/2"
45°	4'-6"	4'-0"	45°
90°	8'-0"	4'-0"	90°
TEE OUTLET	5'-6"	4'-0"	TEE OUTLET
DEAD END	5'-6"	4'-0"	DEAD END



PERMANENT BLOW-OFF

THRUST-BLOCK DETAILS

- NOTES:**
1. All thrust blocks shall be poured against undisturbed soil and shall be Class "B" Concrete.
 2. Thrust block dimensions were calculated to allow a soil bearing value of 1,000 pounds per square foot.

FILE NAME: DWG: 1621

SCHACK & QUARTAROLI
Civil Engineering and Land Surveying
150 Northgate Drive Manteca California 95336
(209) 239-4908

DATE: MAY 1984
DRAWN BY: STAFF
CHECKED BY:
JOB NO: 84-31
SHEET: 1A
OF 1 SHEETS