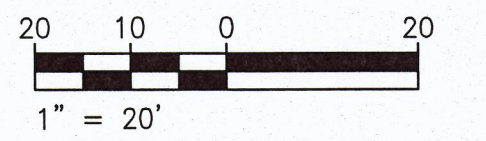
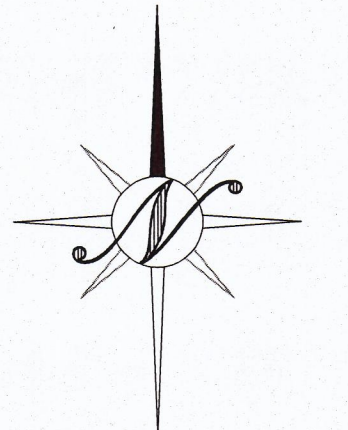
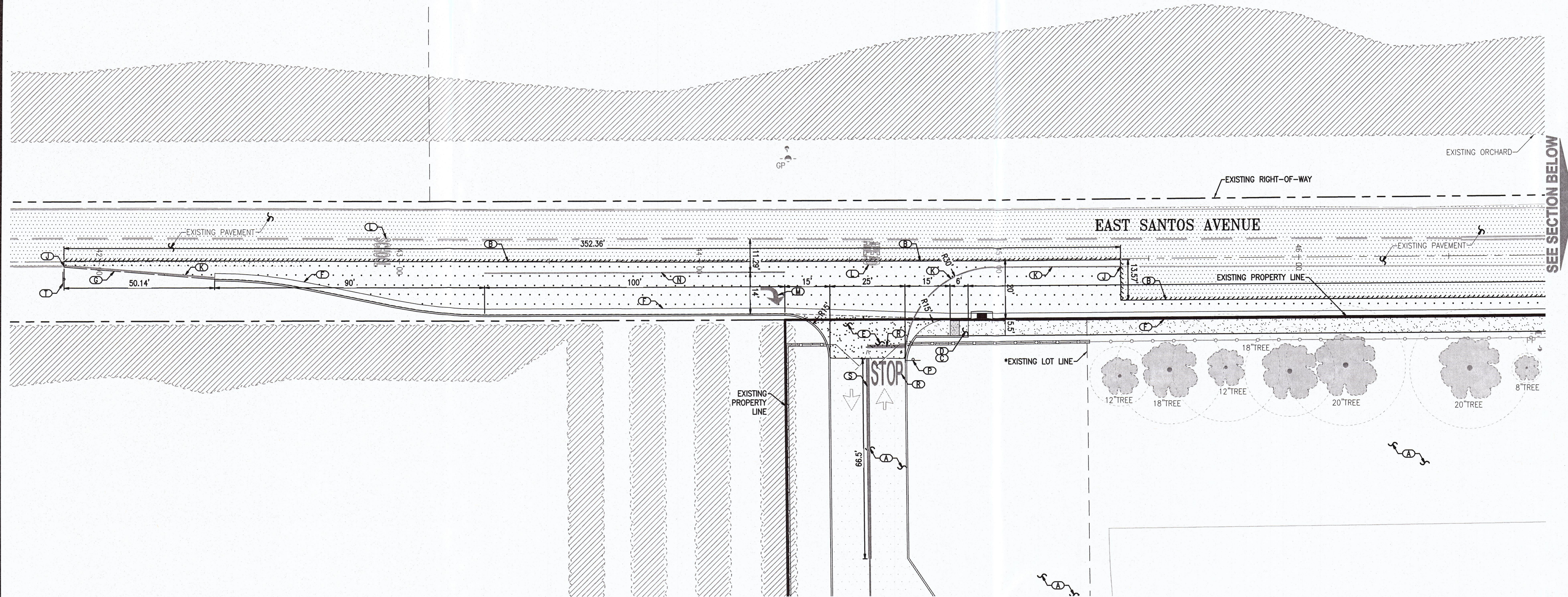
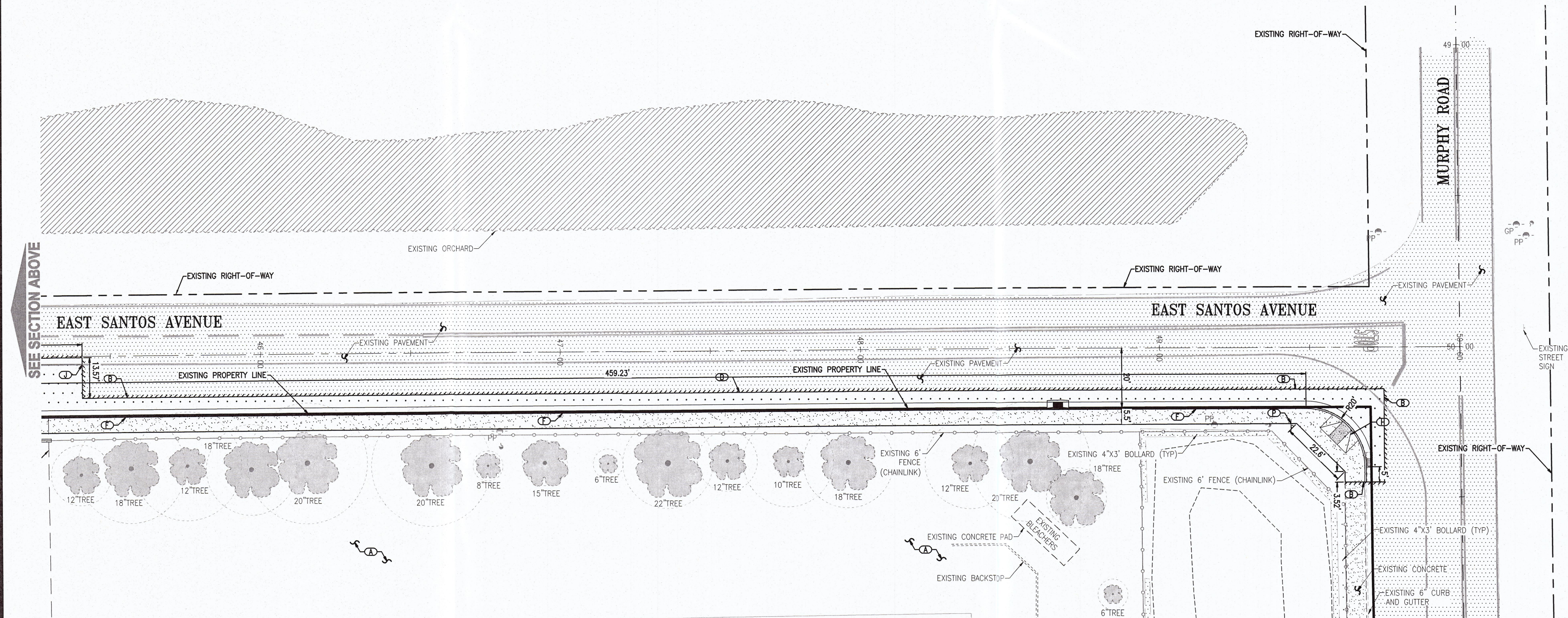

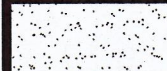



PLOTTED: 03/21/2018 11:22 PLOTTED BY: EAGLEY
DRAWING: 15-1896 Colony Oaks K-8 Civil/Official Plans (C3.1) DML/ang



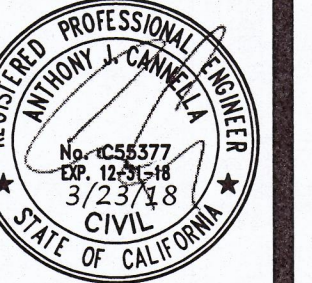
HATCH LEGEND

	EXISTING PAVEMENT		EXISTING CONCRETE
<p>*CONCRETE SECTION - PUBLIC SIDEWALK 4" PCC/4" CLASS II AB (95%RC) SEE COUNTY OF SAN JOAQUIN STANDARD DRAWINGS R-5 AND R-7 FOR ADDITIONAL INFORMATION.</p>			
<p>*CONCRETE SECTION - CONCRETE DRIVEWAY 8" PCC/4" CLASS II AB (95%RC) W/ #4 REBAR @ 18" O.C. EACH DIRECTION PER SAN JOAQUIN COUNTY STANDARD DRAWING R-13.</p>			
	<p>*PAVEMENT SECTION - OFFSITE IMPROVEMENTS T1 = 8, R-VALUE = 50, 5" AC/5" CLASS 2 AB (95%RC)</p>		
<p>*SEE GEOTECHNICAL REPORT FOR ADDITIONAL RECOMMENDATIONS.</p>			
<p>**SEE ARCHITECTURAL PLANS FOR SCORING, CONTROL JOINTS, PATTERN, COLOR AND ADDITIONAL CONCRETE DETAILS AND SPECIFICATIONS.</p>			

KEY NOTES

- SEE TOPOGRAPHIC AND DEMOLITION SHEET C2.1 FOR ADDITIONAL REMOVAL, REPLACEMENT AND PROTECTION NOTES.
- *PRIOR TO CONSTRUCTION CONTRACTOR SHALL VERIFY THAT LOT LINE ADJUSTMENT HAS OCCURRED, PER SEPARATE DOCUMENT, AND THAT LOT LINE ADJUSTMENT HAS BEEN RECORDED. CONTRACTOR SHALL NOT CONSTRUCT OVER PROPERTY LINE WITHOUT WRITTEN AUTHORIZATION FROM ADJACENT PROPERTY OWNER.
- (A) UTILITY LINES, STRUCTURES AND IMPROVEMENTS TO BE CONSTRUCTED PER SEPARATE DOCUMENT. CONTRACTOR SHALL REVIEW "CIVIL IMPROVEMENT PLANS FOR COLONY OAK K-8 SCHOOL" PLAN SET IN CONJUNCTION WITH THIS DOCUMENT. IF A DISCREPANCY IS FOUND, CONTRACTOR SHALL NOTIFY ENGINEER IMMEDIATELY.
- (B) SAWCUT AND REMOVE EXISTING PAVEMENT, CONCRETE, AND/OR CURB AS REQUIRED PER THESE PLANS. CONTRACTOR MAY NEED TO FIELD ADJUST SAWCUT LINE TO REMOVE THE CONCRETE SECTION AT THE NEAREST JOINT WHILE MAINTAINING ACCESSIBLE TRANSITION TO PROVIDE ACCESSIBILITY COMPLIANCE BASED ON FIELD CONDITIONS.
- (C) ACCESSIBLE RAMP 8.33% MAX SLOPE WITH A 2.0% MAX LEVEL LANDING AS SHOWN ON THE GRADING AND DRAINAGE PLANS - SEE SAN JOAQUIN COUNTY STANDARD DRAWING R-10(A-D) FOR ADDITIONAL INFORMATION.
- (D) CONTRACTOR SHALL INSTALL DETECTABLE WARNING SURFACE. SEE SAN JOAQUIN COUNTY STANDARD DRAWING R-10(A-D) FOR ADDITIONAL INFORMATION.
- (E) CONTRACTOR SHALL INSTALL TYPE 1 COMMERCIAL DRIVEWAY APPROACH PER SAN JOAQUIN COUNTY STANDARD PLANS AND SPECIFICATIONS. (SEE DRAWING NO. R-13).
- (F) CONTRACTOR SHALL INSTALL 6" VERTICAL CURB, GUTTER AND SIDEWALK PER SAN JOAQUIN COUNTY STANDARD PLANS AND SPECIFICATIONS. (SEE DRAWING NO. R-7).
- (G) CONTRACTOR SHALL INSTALL EDGE OF PAVEMENT HEADER BOARD PER DETAIL ON SHEET C1.3.
- (H) CONTRACTOR SHALL INSTALL RAMP AT RETURN PER SAN JOAQUIN COUNTY STANDARD PLANS AND SPECIFICATIONS. (SEE DRAWINGS NO. R-10(A-D) AND R-24). CONTRACTOR SHALL INSTALL TRUNCATED DOWNS.
- (I) CONTRACTOR SHALL MATCH AND CONNECT TO EXISTING STRIPING PER CALIFORNIA MUTCD STANDARDS.
- (J) CONTRACTOR SHALL INSTALL RIGHT WHITE EDGE LINE 27B PER CALIFORNIA MUTCD STANDARDS.
- (K) CONTRACTOR SHALL REPAIR ANY STRIPING AND/OR MARKINGS DAMAGED DURING CONSTRUCTION PER CALIFORNIA MUTCD STANDARDS.
- (L) CONTRACTOR SHALL INSTALL ARROW TYPE III (R) PER CALIFORNIA MUTCD STANDARDS AND SPECIFICATIONS.
- (M) CONTRACTOR SHALL INSTALL 8 INCH SOLID WHITE LINE PER CALIFORNIA MUTCD STANDARDS AND SPECIFICATIONS.
- (N) CONTRACTOR SHALL INSTALL STOP SIGN PER SAN JOAQUIN COUNTY STANDARDS AND SPECIFICATIONS.
- (O) CONTRACTOR SHALL INSTALL STOP BAR AND LEGEND PER CALIFORNIA MUTCD STANDARDS AND SPECIFICATIONS.
- (P) CONTRACTOR SHALL INSTALL TWO-DIRECTION NO-PASSING PATTERN WITH PAVEMENT MARKERS PER CALIFORNIA MUTCD STANDARD DETAIL 22.
- (Q) CONTRACTOR SHALL RE-INSTALL "25 MPH" SIGN PER SAN JOAQUIN COUNTY STANDARDS AND CALIFORNIA MUTCD STANDARDS AND SPECIFICATIONS.

COPYRIGHT © 2018 NORTHSTAR ENGINEERING GROUP, INC.



REVISIONS	DATE	APPROVED
NO.	DESCRIPTIONS	

HORIZONTAL CONTROL, STRIPING AND PAVING PLAN OFFSITE CIVIL IMPROVEMENT PLANS FOR COLONY OAK K-8 SCHOOL CALIFORNIA

RIPON,

NorthStar
Engineering Group, Inc.
• CIVIL ENGINEERING • SURVEYING • PLANNING •
620 12th Street Modesto, CA 95354
(209) 324-3225 Phone (209) 324-3226 Fax

JOB #: 116-1696
DATE: 03/21/2018
SCALE: AS SHOWN
DRAWN: -
DESIGN: -
CHK'D: JPE

SHEET
NUMBER

C3.1