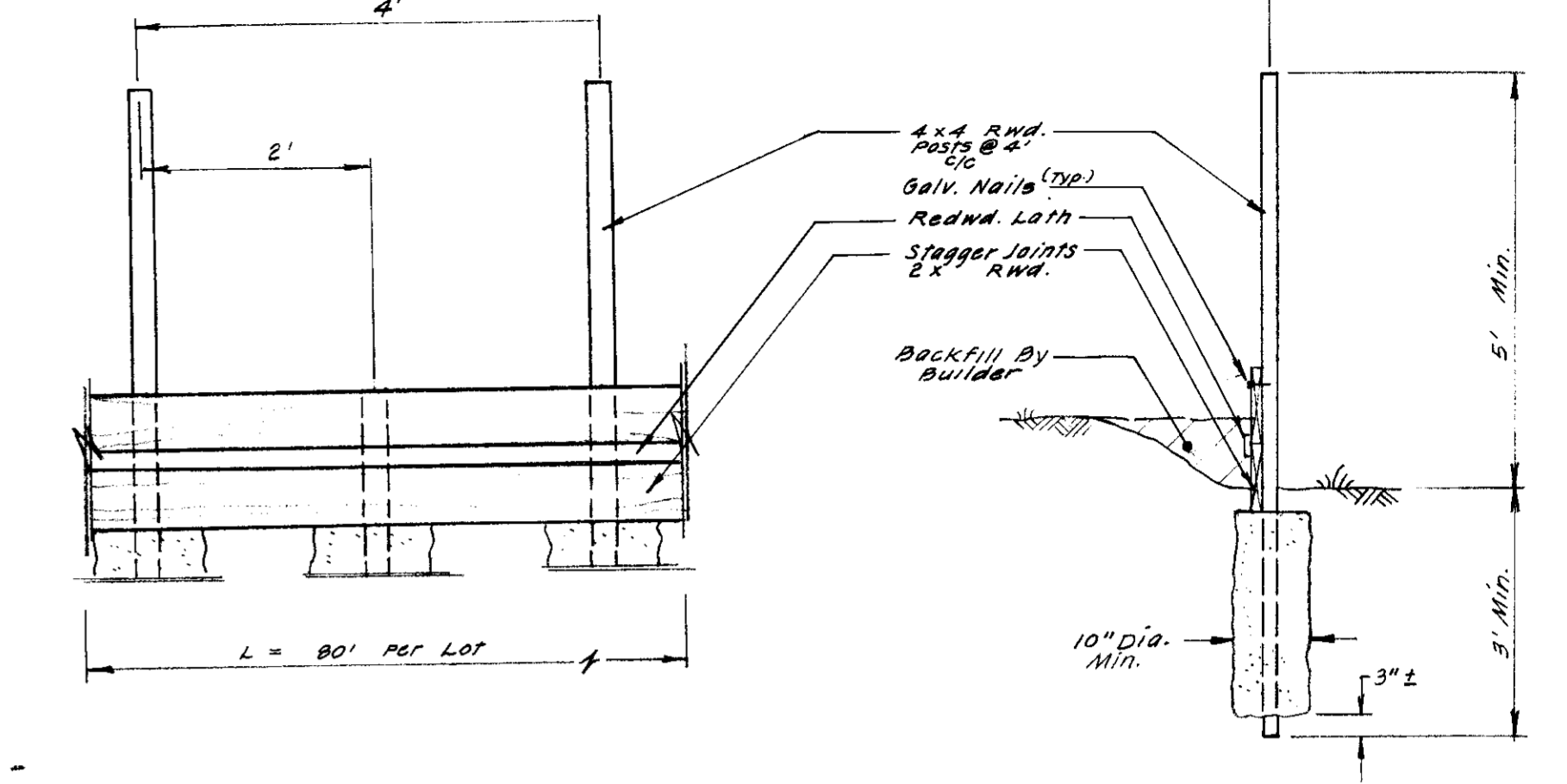
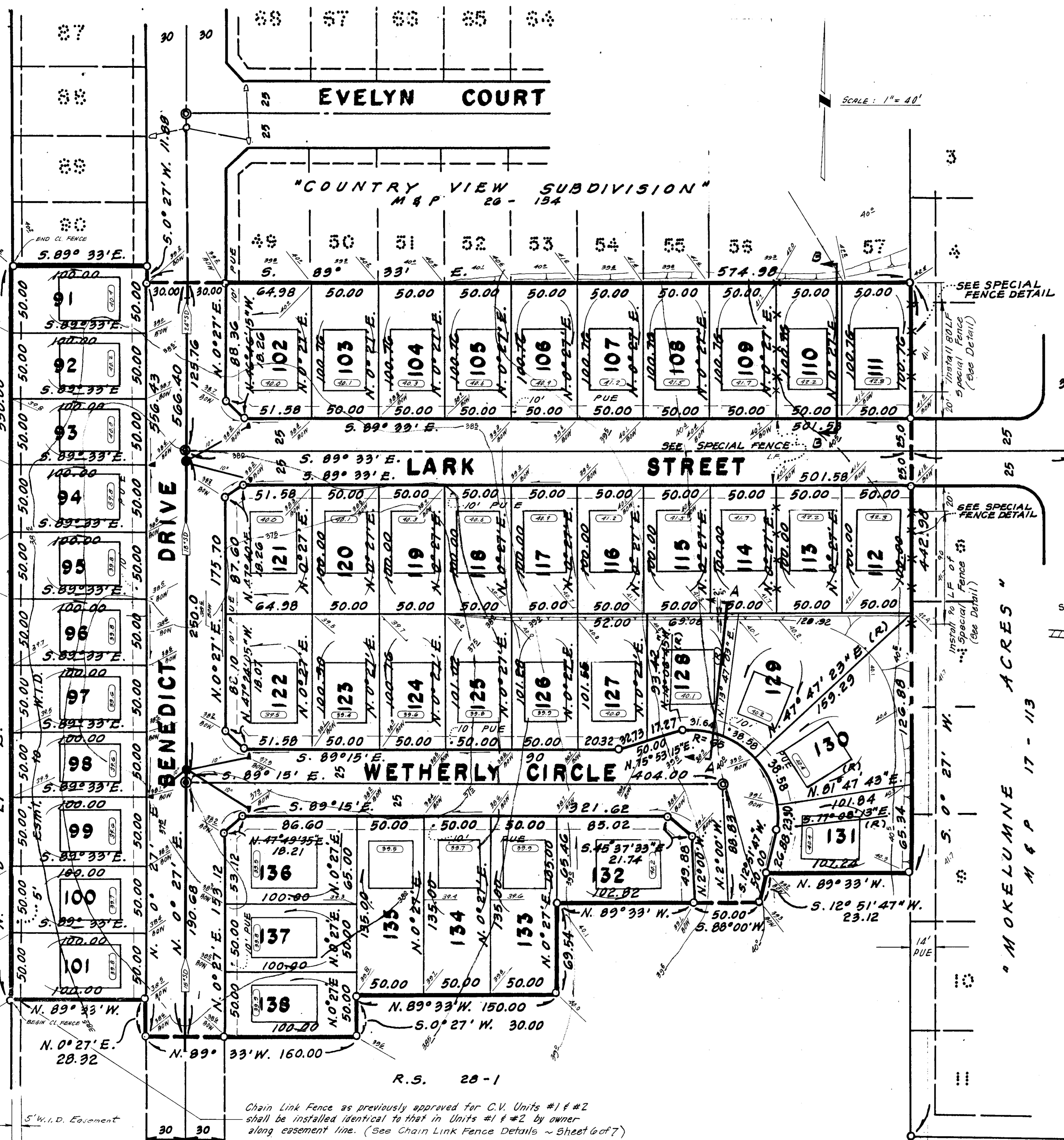


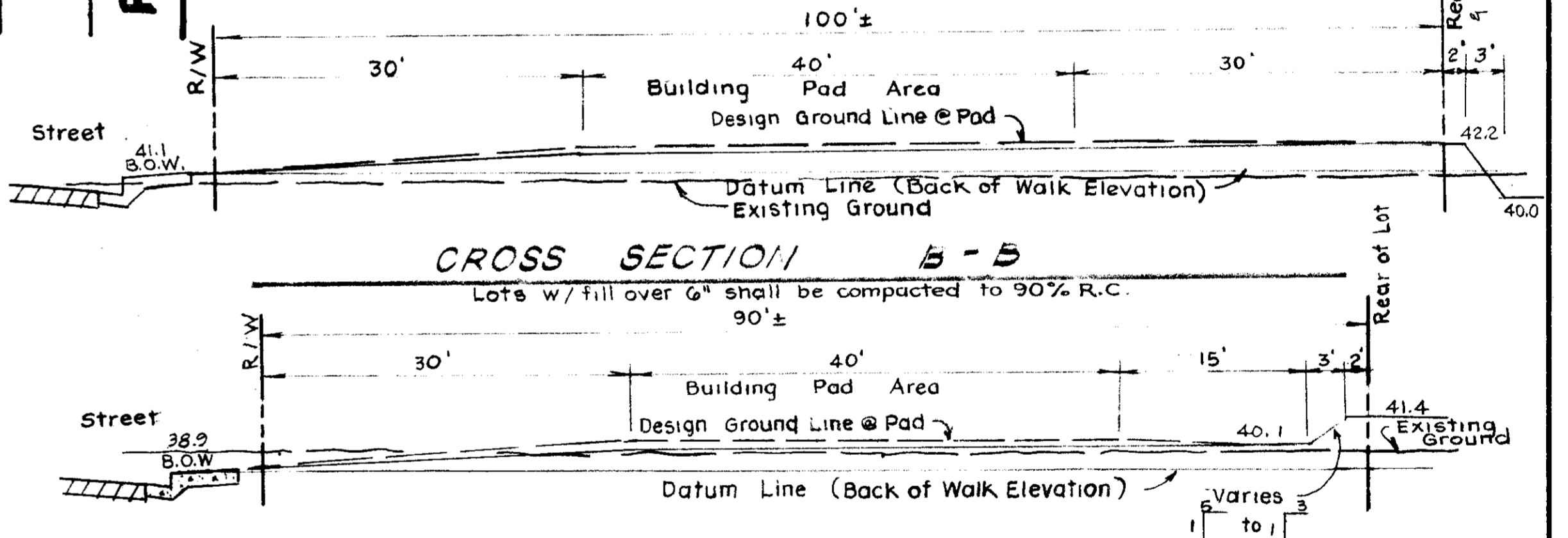
Improvement SU 1774

Section Line N. 0° 27' E. CANAL W.I.D. BENEDICT DRIVE LARK STREET WETHERLY CIRCLE RIO VERDE STREET MOKELUMNE ACRES

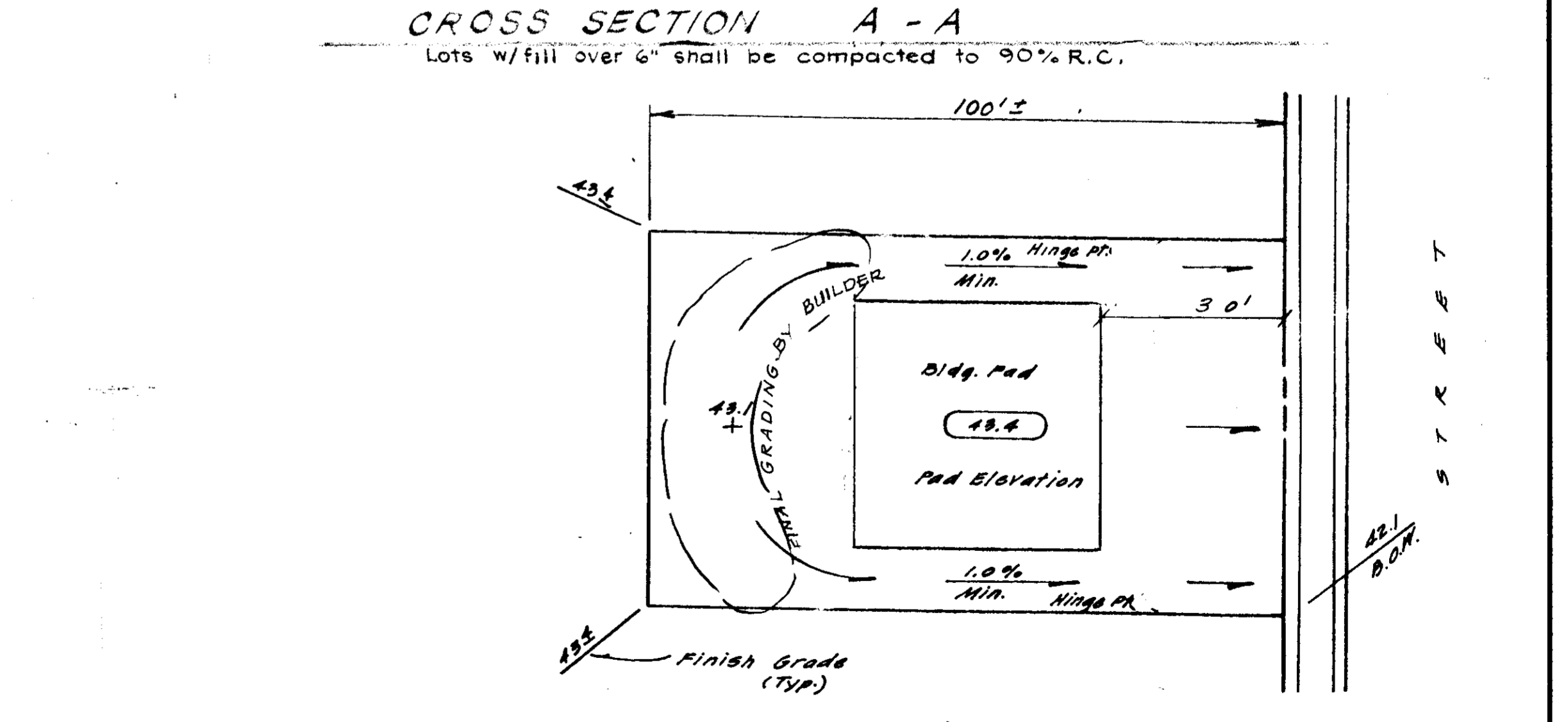
Book "A" of Decds, Vol. 58, Pg. 185, S. J. Co. Rec. II Superior Case Court Case No. 102714



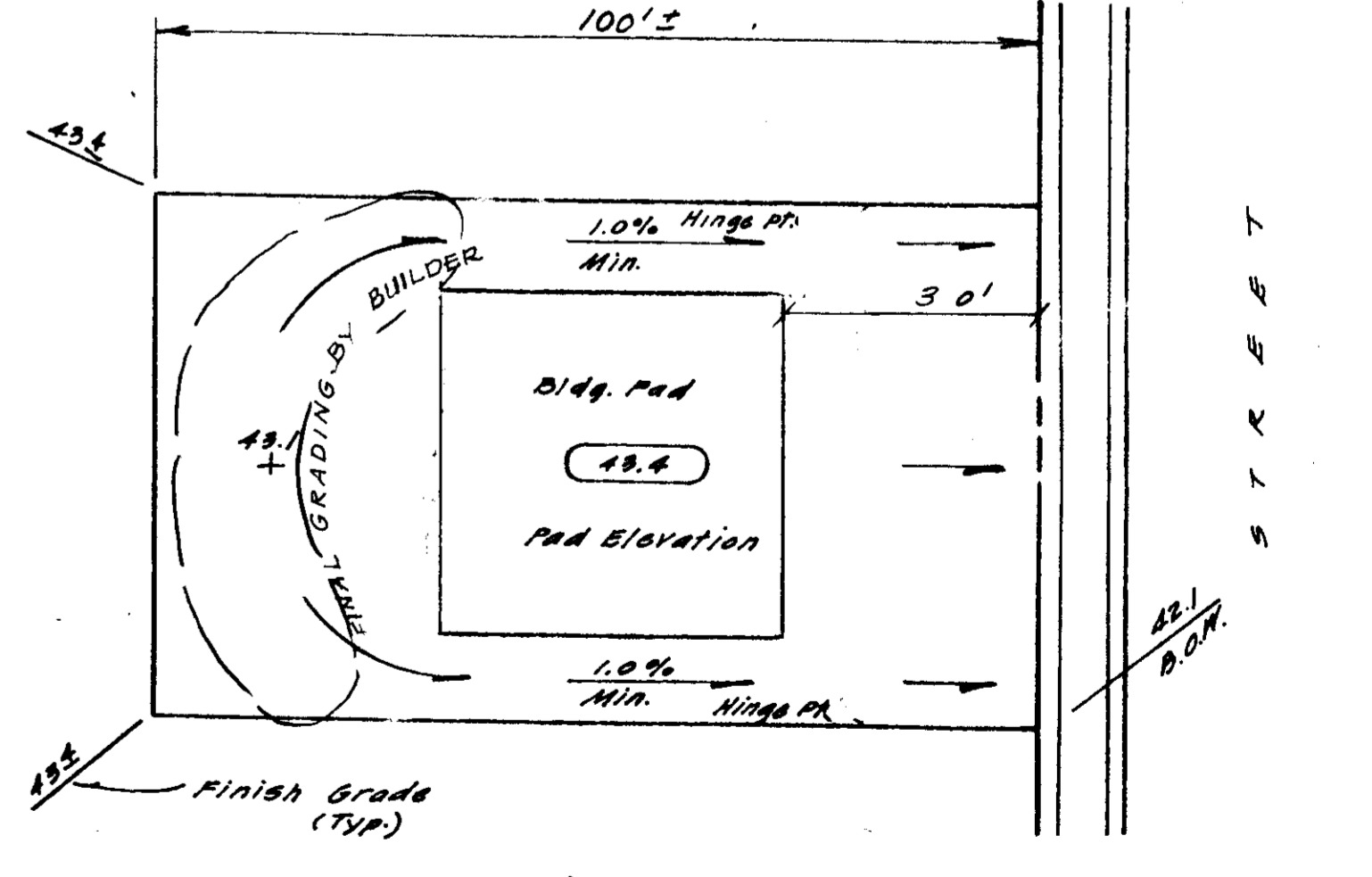
SPECIAL FENCE DETAIL by OWNER NTS



CROSS SECTION B-B



CROSS SECTION A-A



TYPICAL PLAN

Chain Link Fence as previously approved for C.V. Units #1 & #2 shall be installed identical to that in Units #1 & #2 by owner along easement line. (See Chain Link Fence Details ~ Sheet 6 of 7)

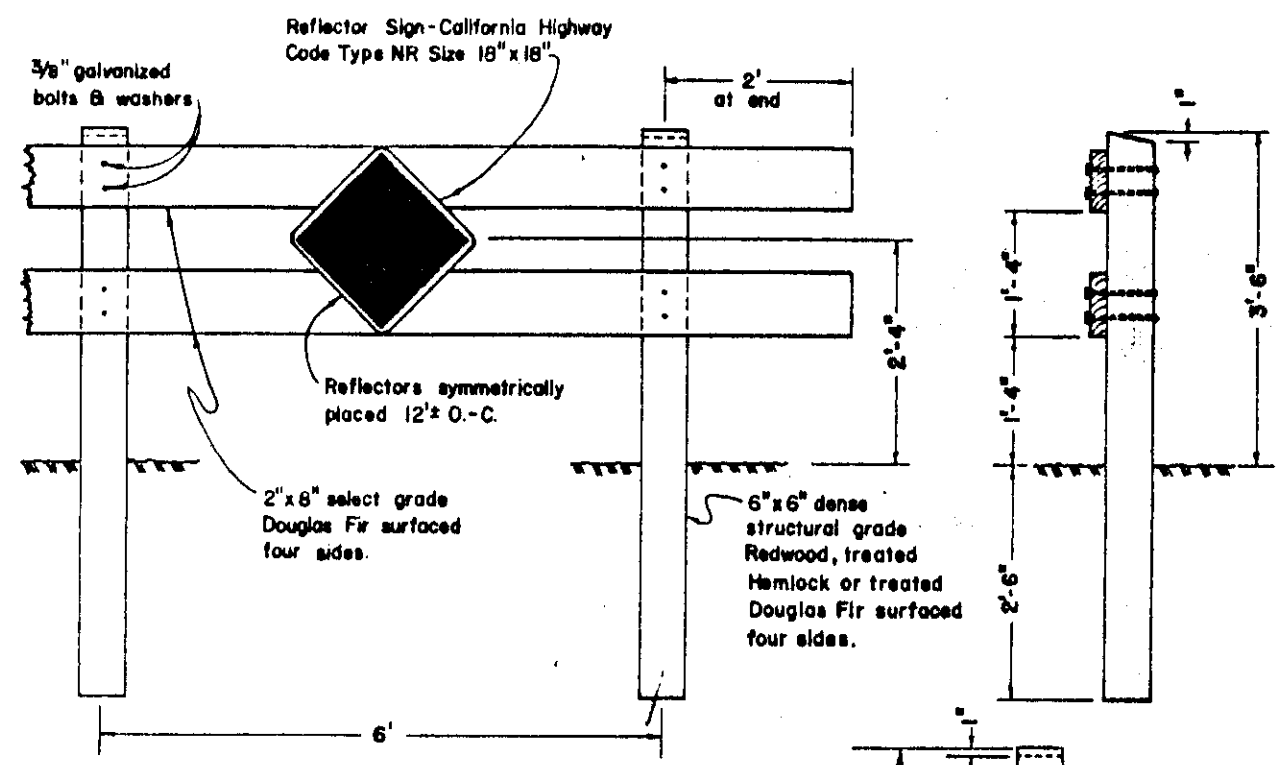
NO	DATE	REVISIONS	BY	DESIGN	DRAWN BY

**BAUMBACH & PIAZZA**  
 CIVIL ENGINEERS  
 SURVEYORS  
 323 W. ELM ST. LODI, CALIF.  
 95240 PH: 209-368-6516

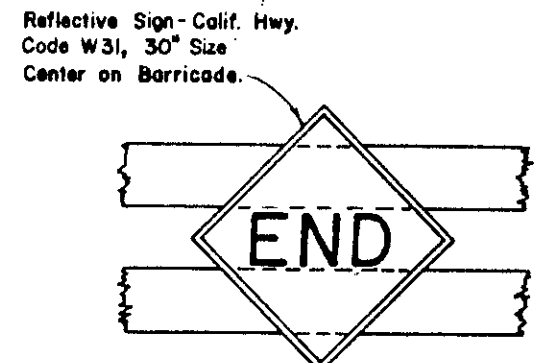
GRADING PLAN

COUNTRY VIEW SUBDIVISION  
UNIT NO. 3  
SUBDIVISION IMPROVEMENTS

SHEET 7 OF 7  
JOB NO. 79104-3  
FILE NO. G-761

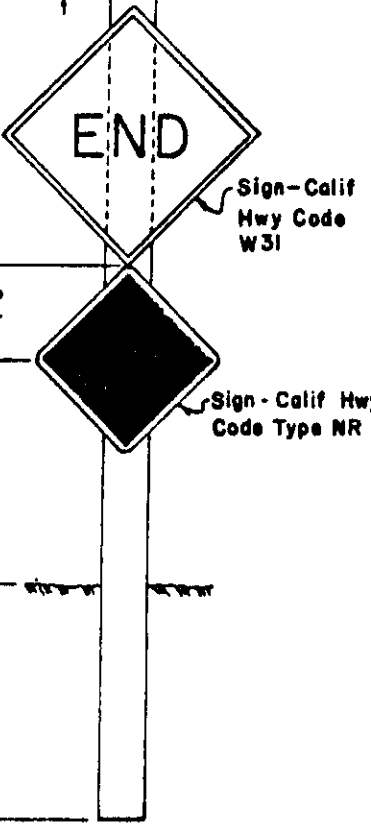


TYPE "A"



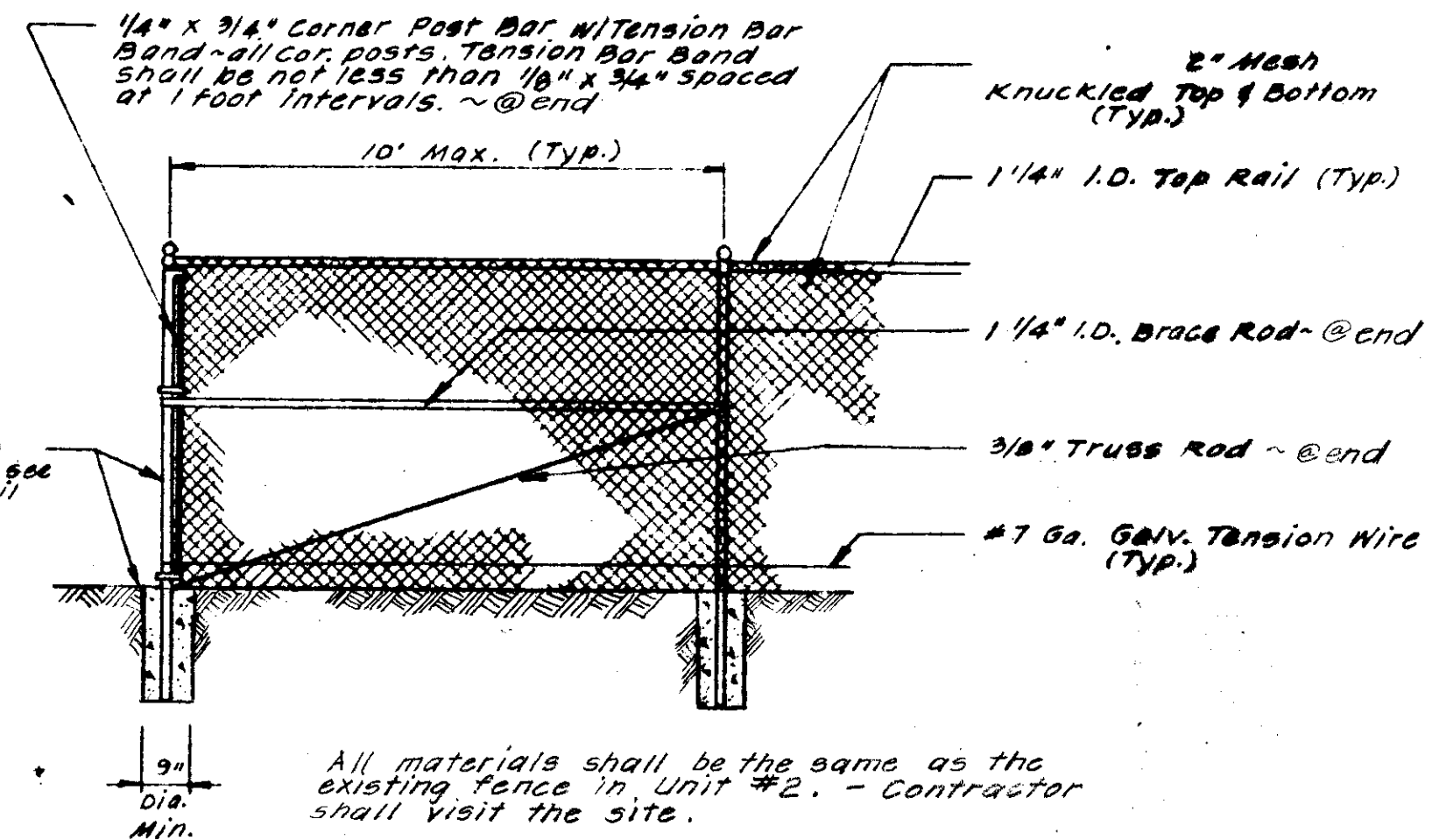
CENTER REFLECTOR FOR TYPE "A" BARRICADE

NOTES:  
1. Barricades to be as wide as street R/W  
2. Barricades to be painted white using 2 coats of "Exterior Alkyd Resin Hi-Gloss Enamel" over a compatible primer.



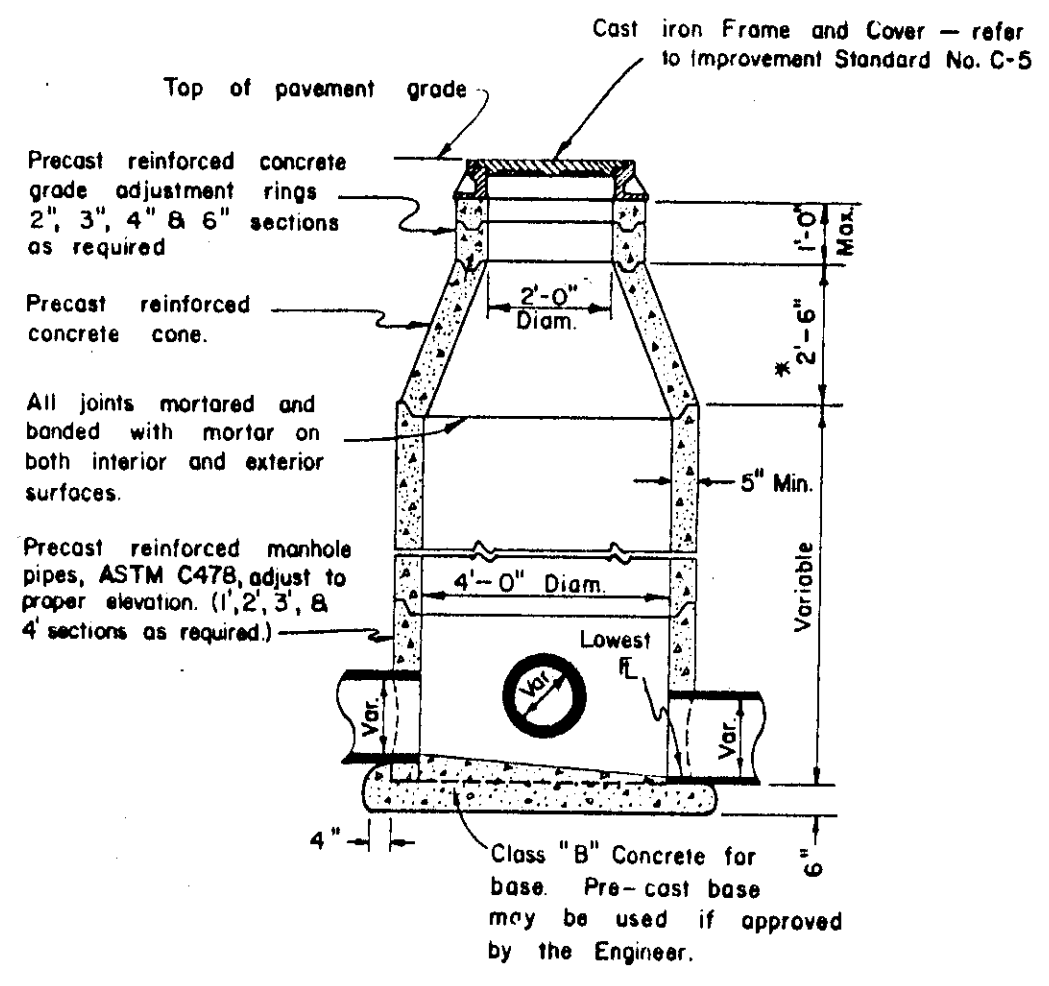
TYPE "B"

BARRICADES FOR TERMINATING STREETS



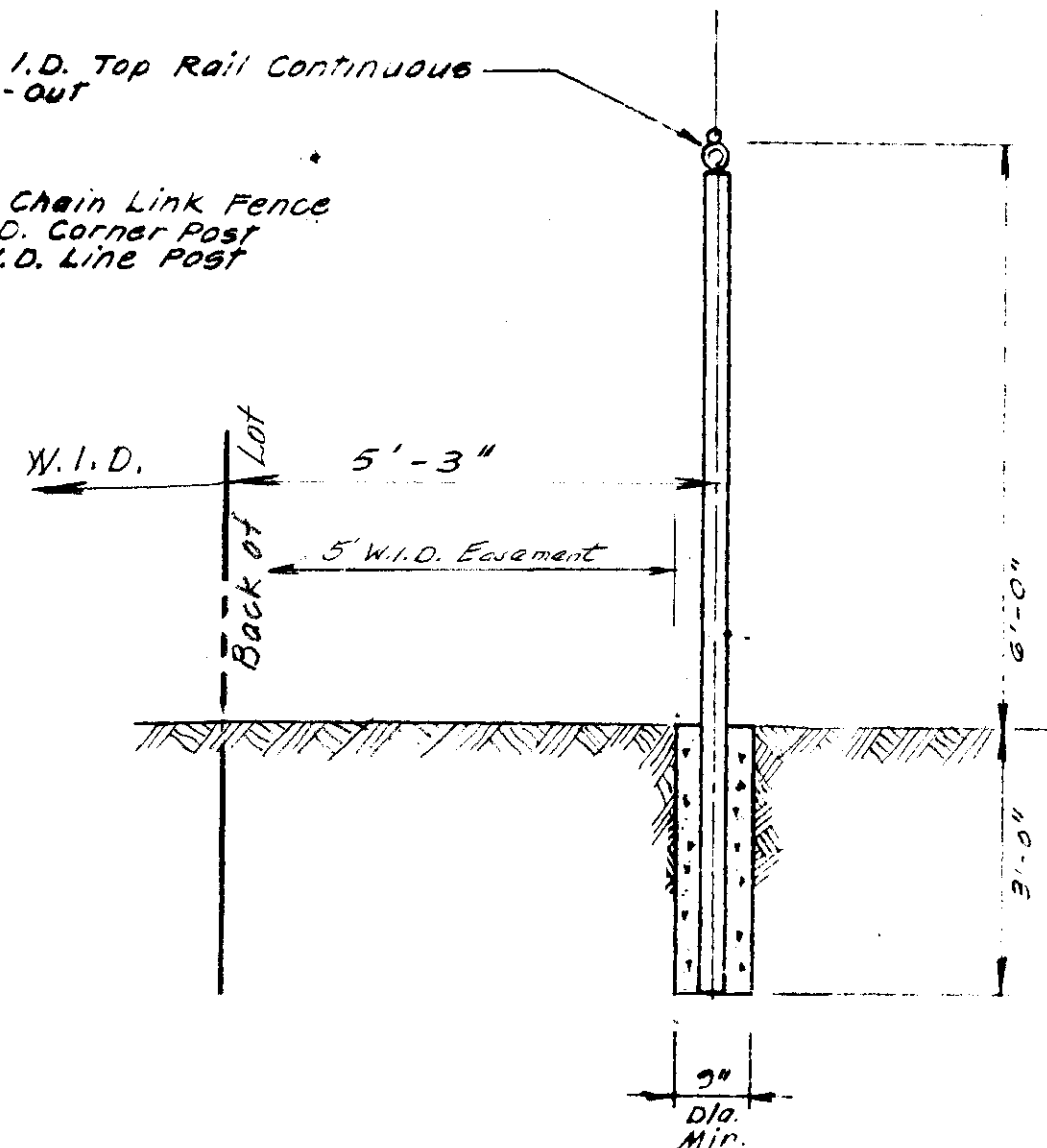
FENCE DETAIL No Scale

All materials shall be the same as the existing fence in Unit #2. - Contractor shall visit the site.

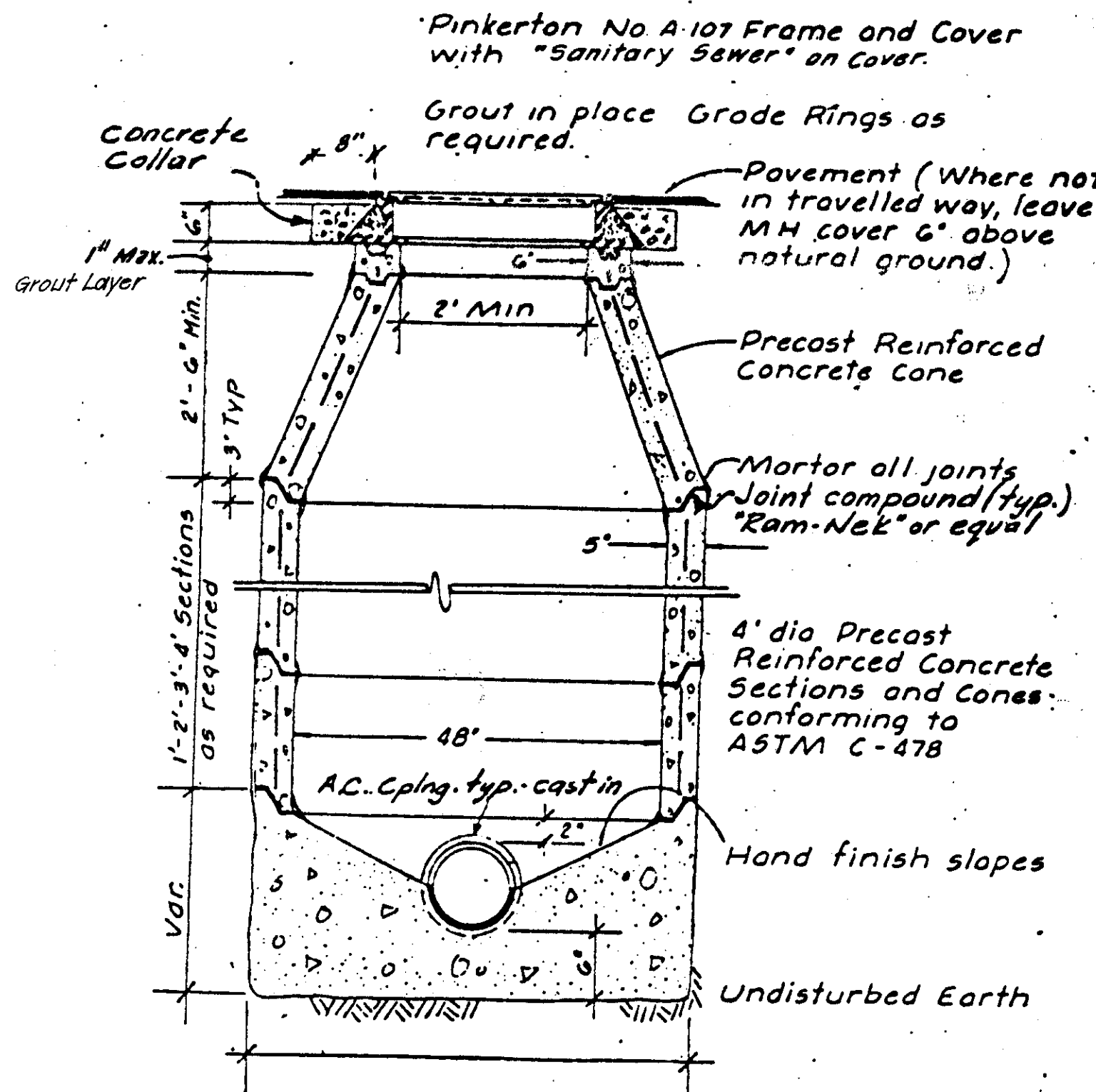


ELEVATION STORM SEWER MANHOLE

\*NOTE: A 1'-6" concrete cone may be used if approved by the Engineer.

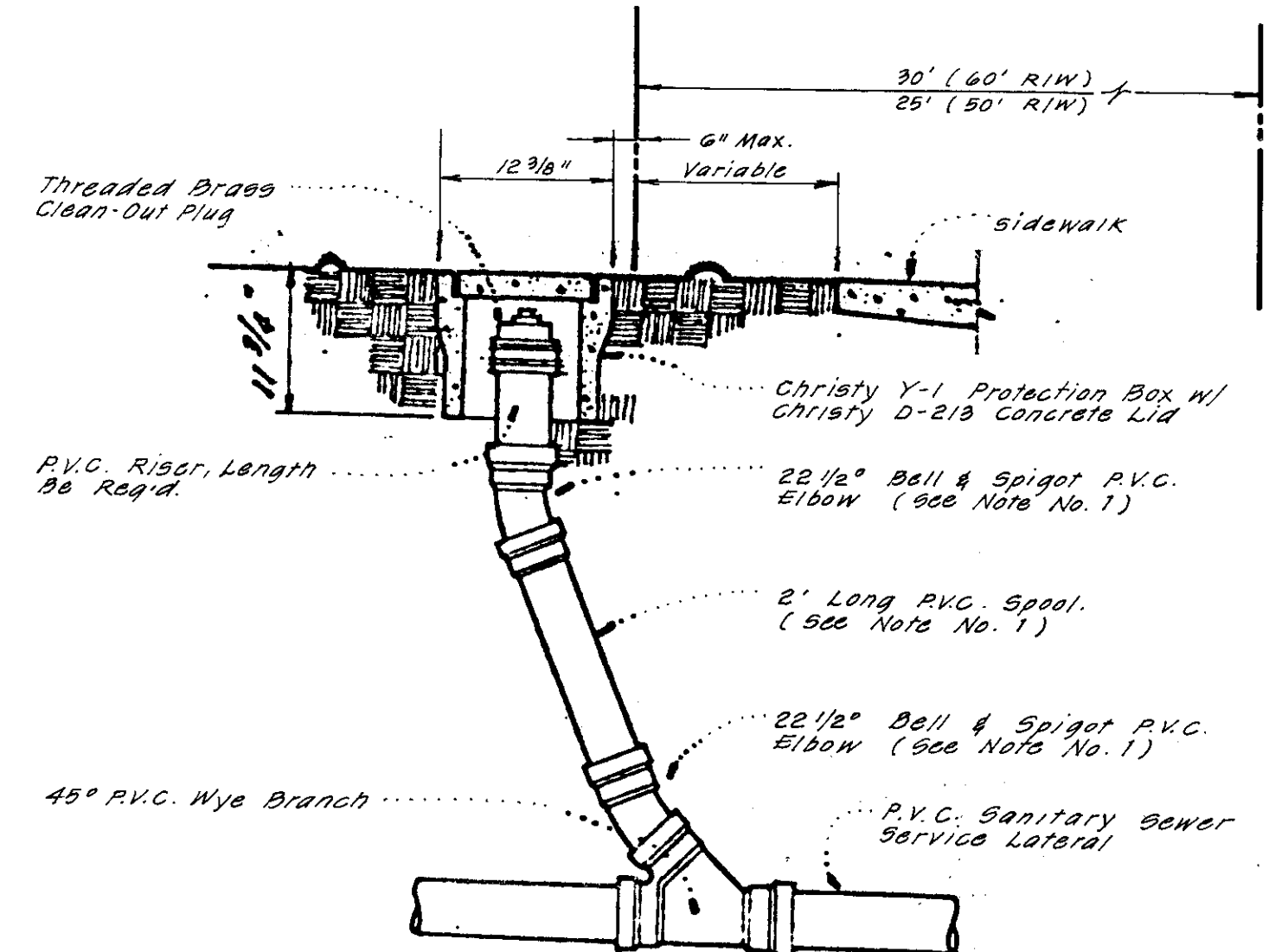


POST DETAIL



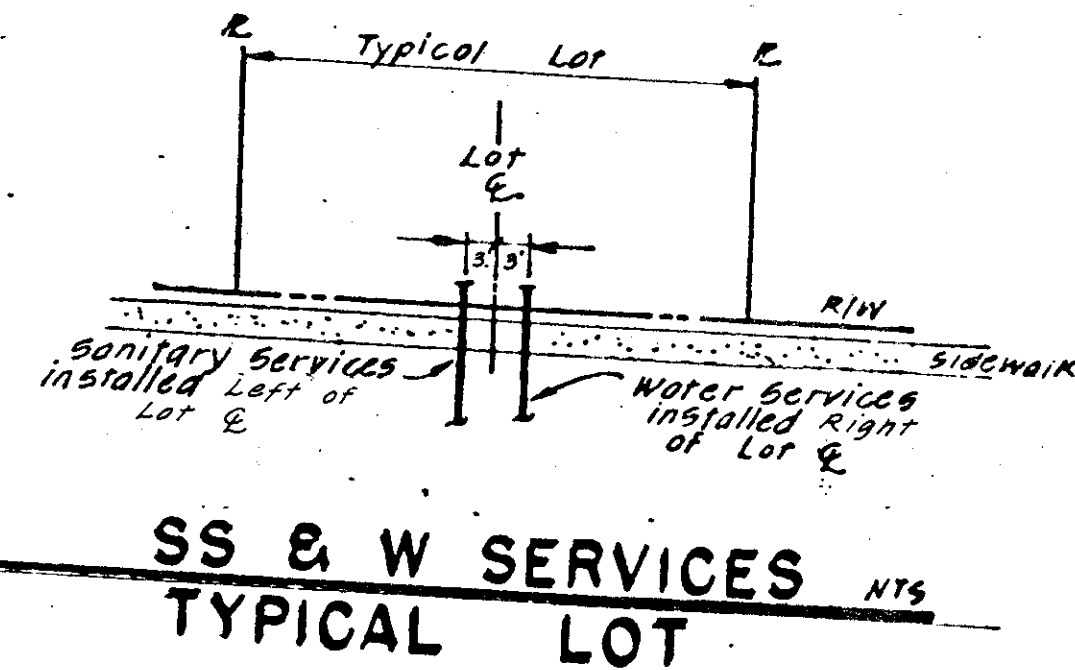
SANITARY SEWER MANHOLE N.T.S.

Note: Use Class "B" concrete for all sections. (Woodbridge Sanitary District S.S. Manhole)

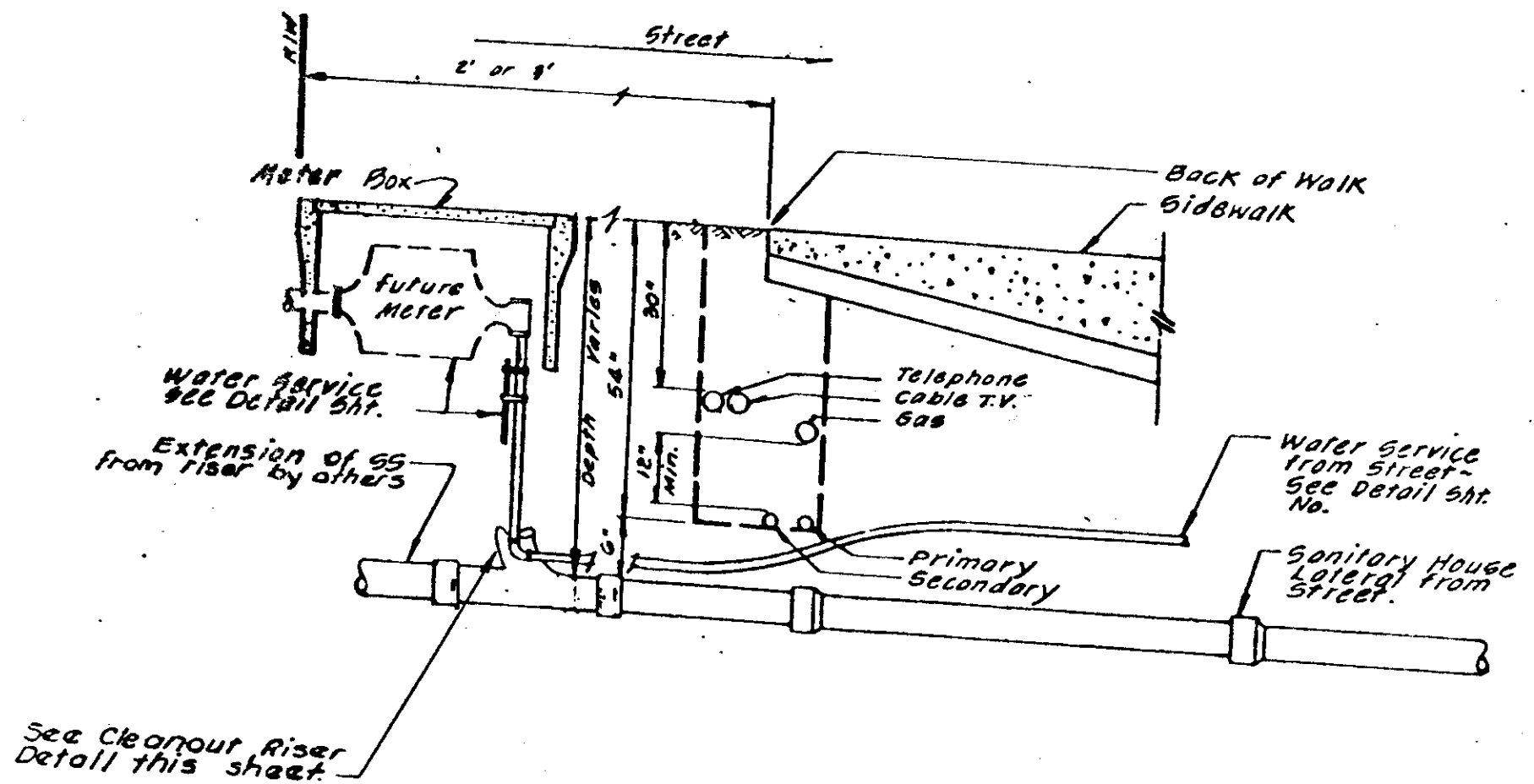


SERVICE LATERAL CLEAN-OUT N.T.S.

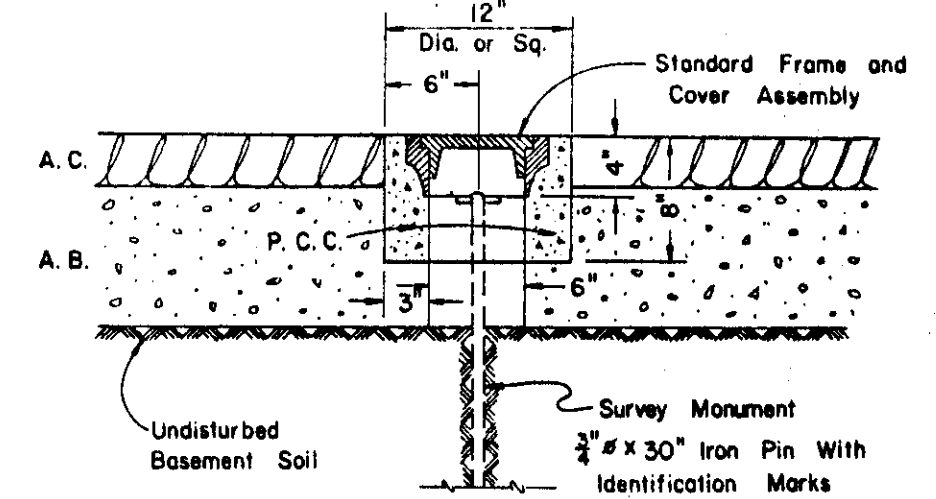
- NOTES:
- Contractor may substitute long-radius P.V.C. bend, if available, for the two 22 1/2° elbows and 2' spool.
  - Cleanouts shall be installed on all sewer service laterals at the edge of the right of way as shown.
  - Cleanout riser and fittings shall be Polyvinyl Chloride (P.V.C.) pipe conforming to ASTM D 3034 - SDA 35 with rubber rings meeting the requirements of ASTM D - 3212.
  - Cleanout riser and fittings shall be of the same diameter pipe as the service lateral.



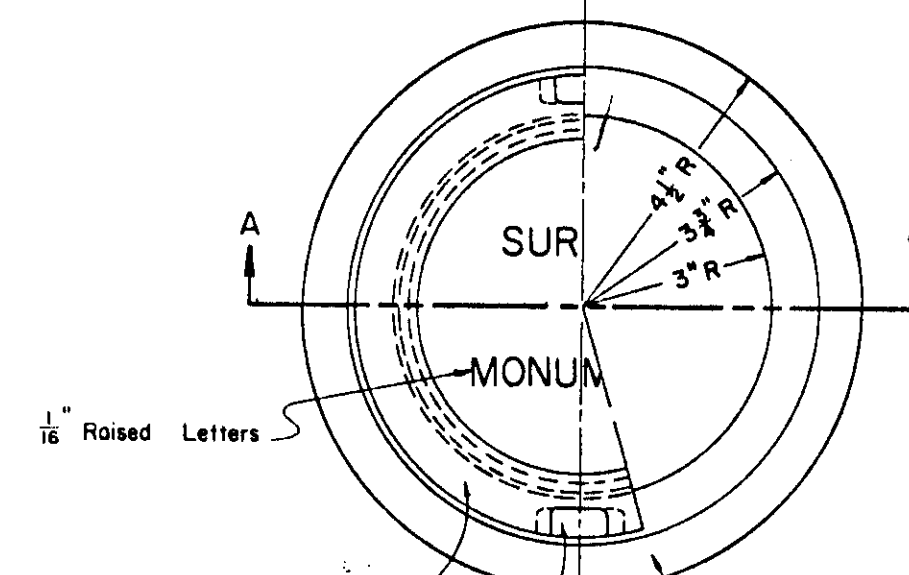
SS & W SERVICES N.T.S. TYPICAL LOT



UNDERGROUND UTILITY LOCATION Not to Scale



TYPICAL SECTION



SECTION A-A

SURVEY MONUMENT FRAME & COVER ASSEMBLY

NO.	DATE	REVISIONS	BY	DESIGN	DRAWN BY

**BAUMBACH & PIAZZA**  
CIVIL ENGINEERS  
SURVEYORS  
323 W. ELM ST. LODI, CALIF.  
95240 PH: 209-368-8818

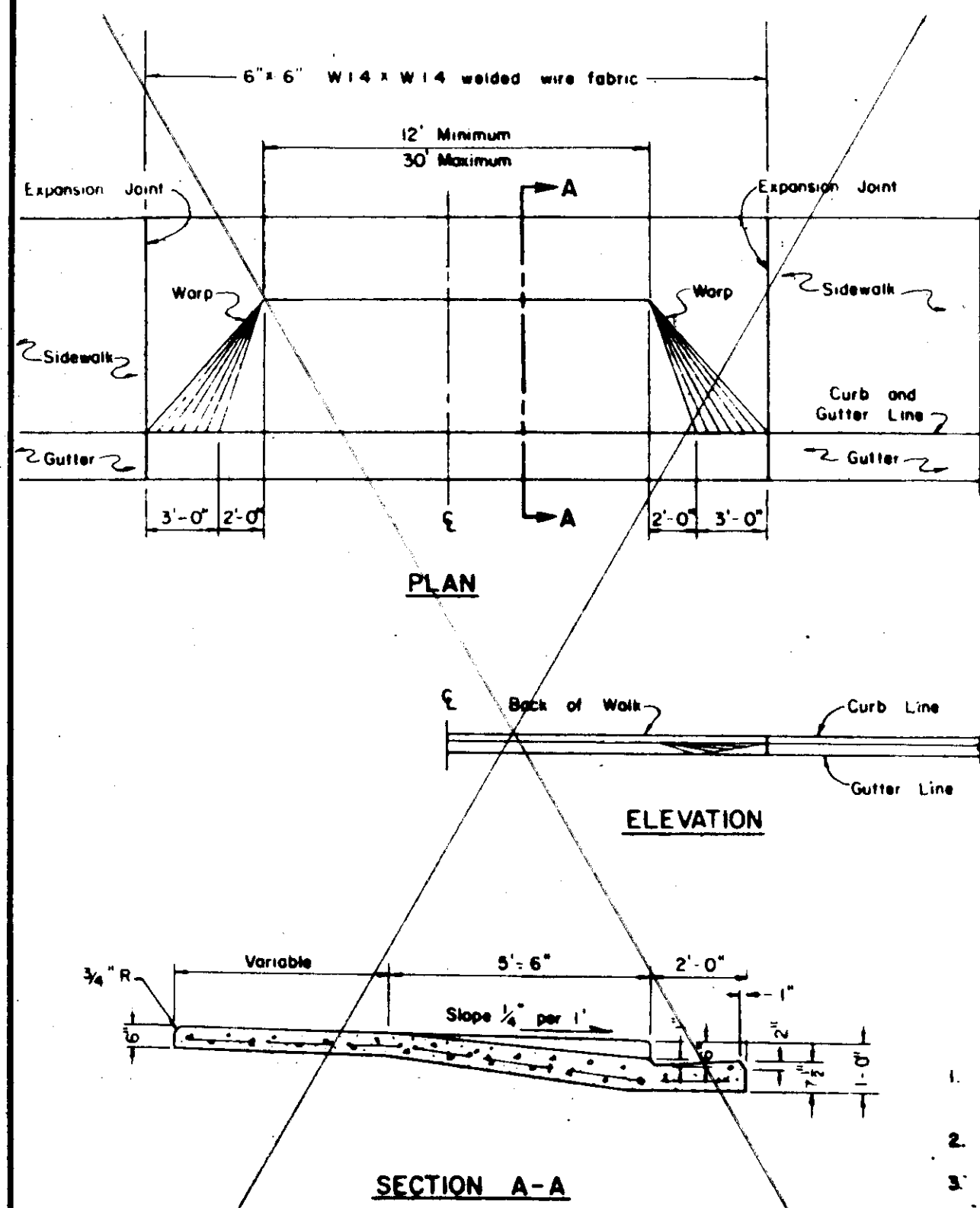
DETAIL SHEET

COUNTRY VIEW SUBDIVISION  
UNIT NO. 3  
SUBDIVISION IMPROVEMENTS

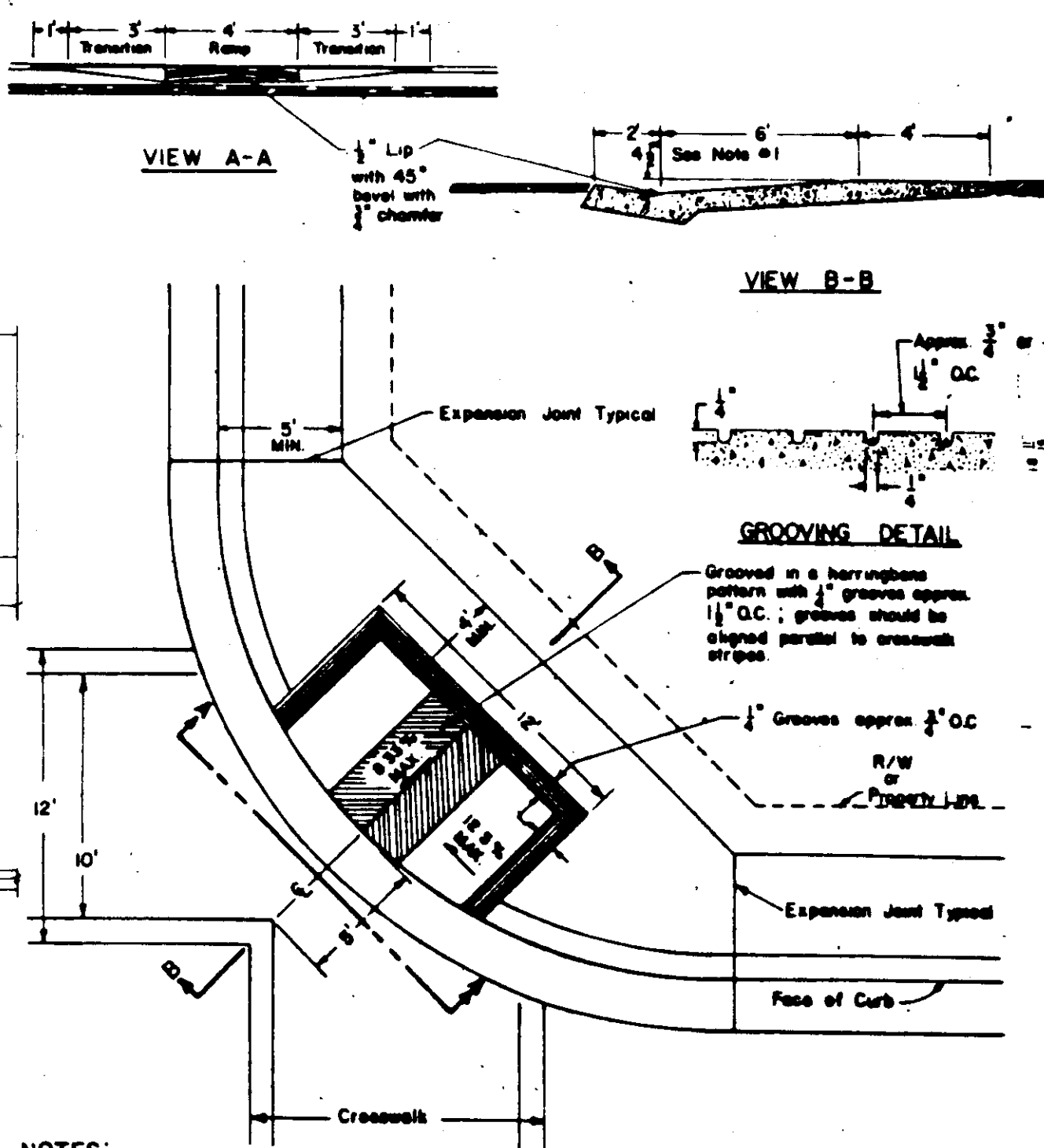
SHEET 6 OF 7  
JOB NO. 79104-3  
FILE NO. G-761

Improvement SU 17-75

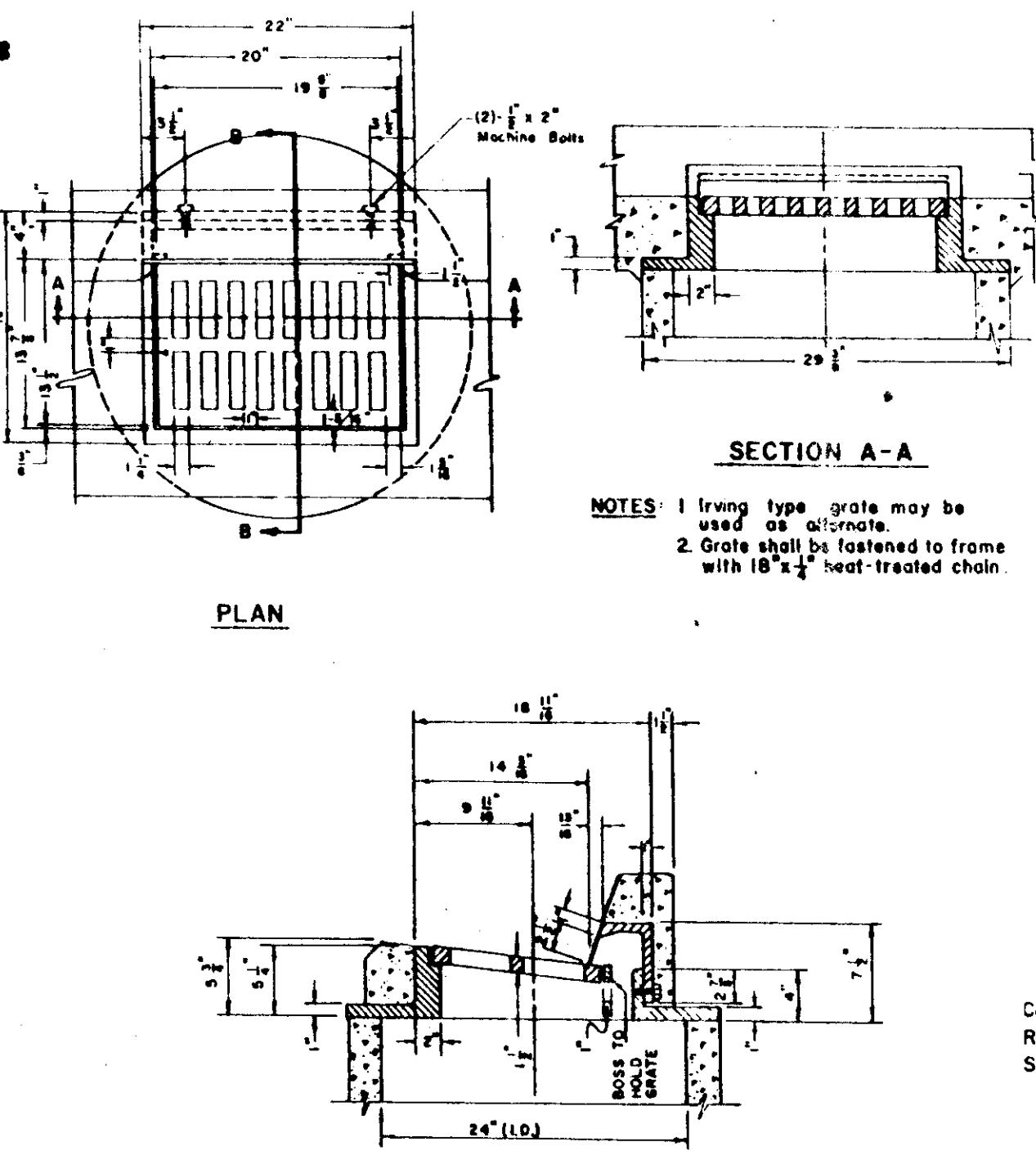
FOR ADDITIONAL DETAILS SEE SPECIFICATIONS



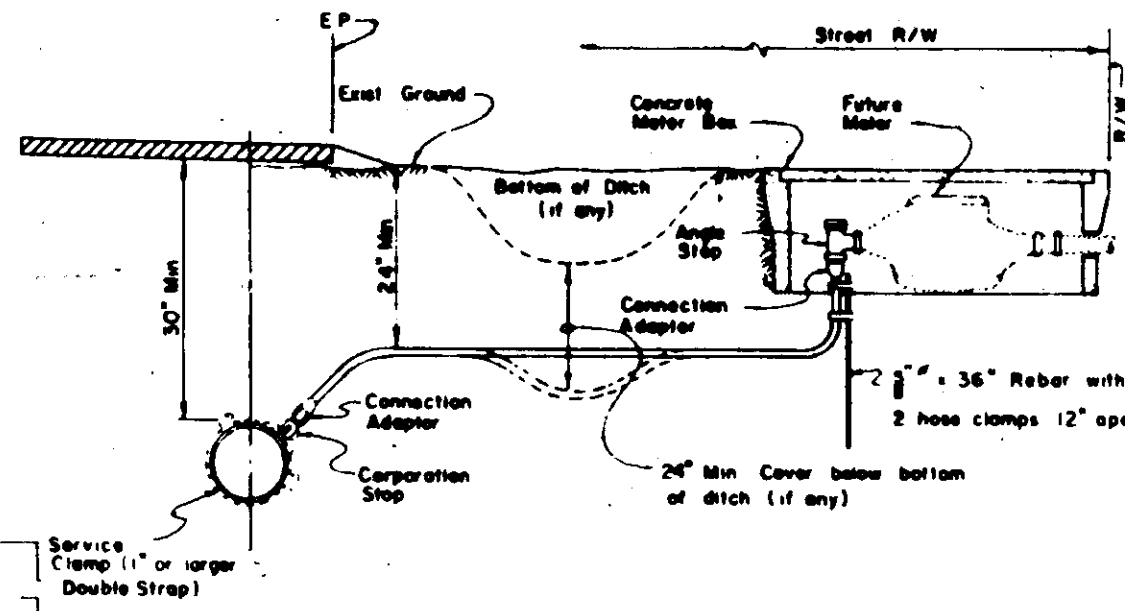
TYPICAL COMMERCIAL DRIVEWAY



HANDICAP RAMP

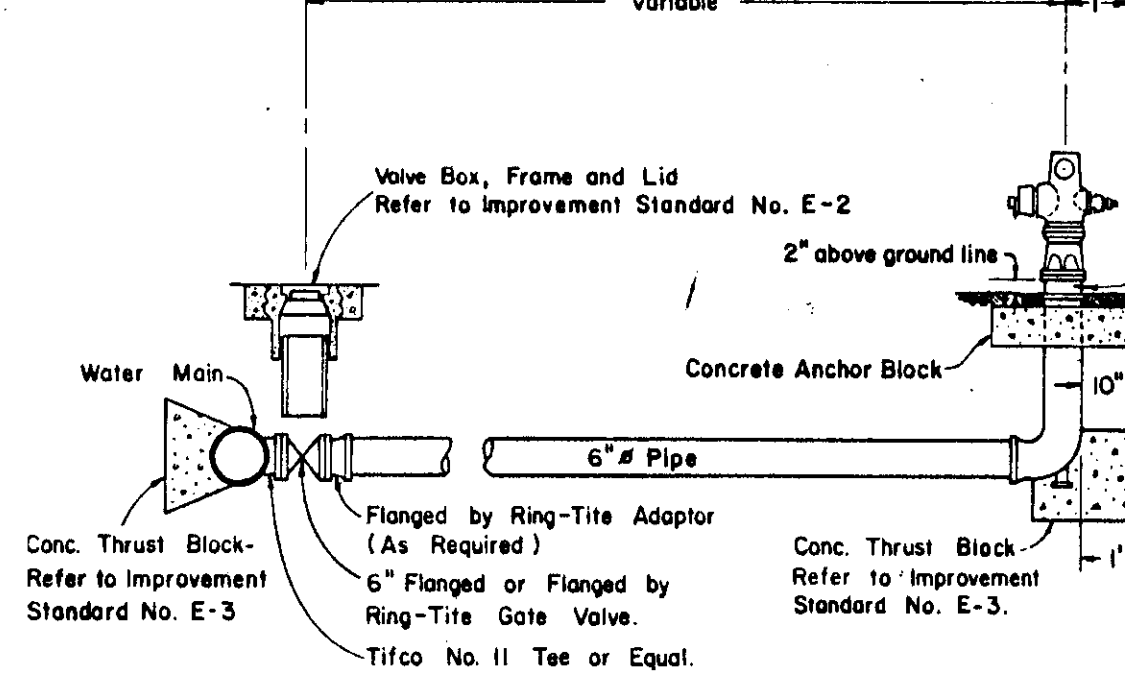


FRAME & GRATE (STANDARD STORM DRAIN INLET)



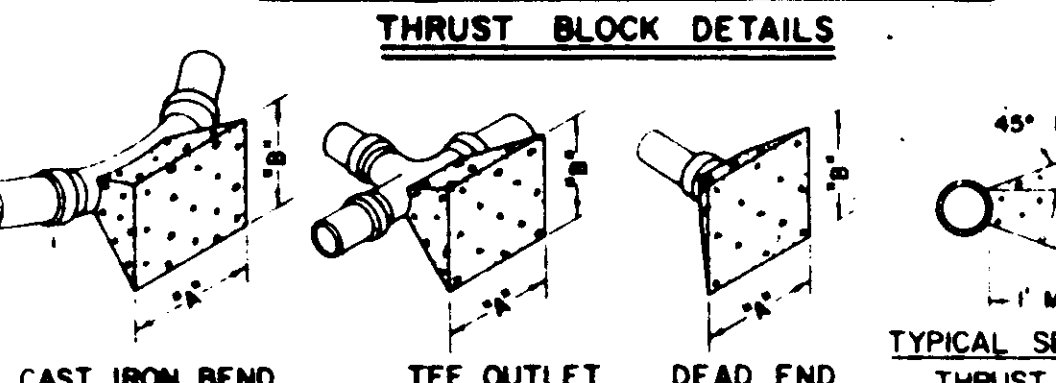
- NOTES:
1. Plastic pipe up to 18\"/>
  - 2. Plastic pipe for 2\"/>
  - 3. Corporation stop shall have corporation cock threads.
  - 4. Angle stop shall have swivel nut and lock wings.
  - 5. Angle stop shall be vertically plumb.
  - 6. Size of service line shall be as required by the County.
  - 7. Muttler into-tile connection shall conform to ASTM Designation D 2239.

WATER SERVICE

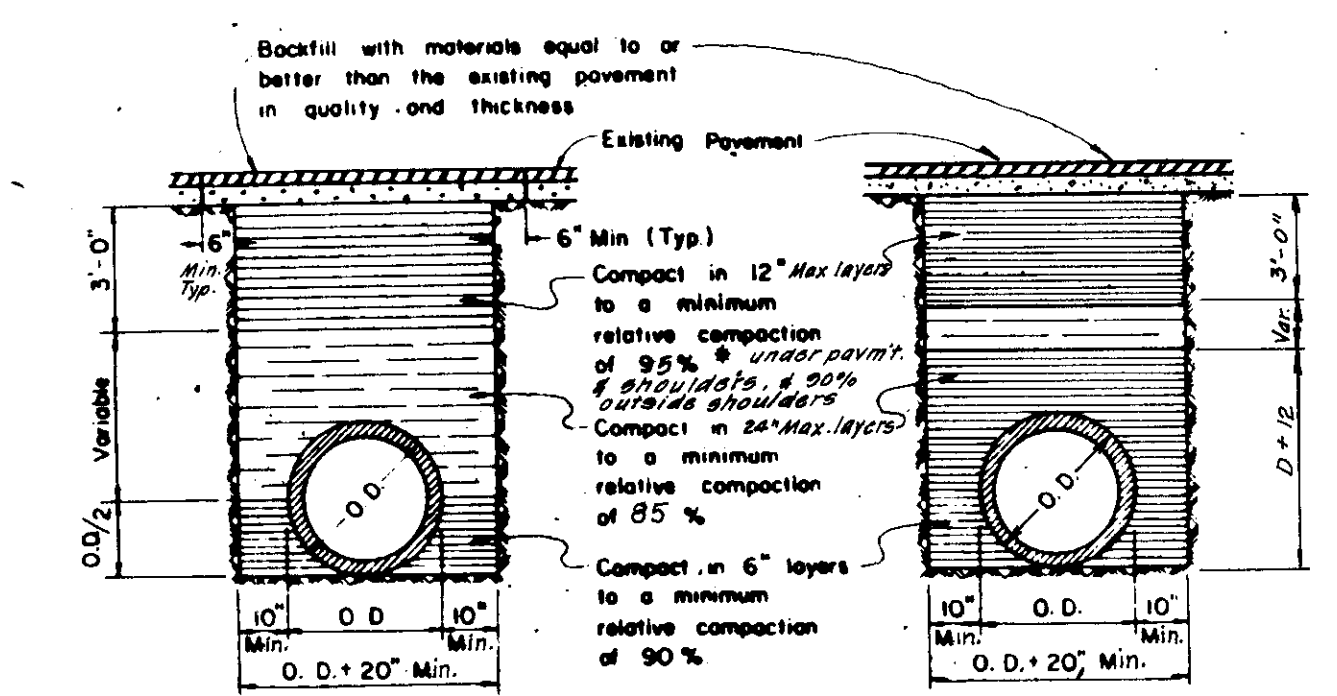


- NOTES:
1. Fire Hydrants shall be placed with 4\"/>
  - 2. Fire Hydrants shall be clean and free of concrete.
  - 3. Fire Hydrants to be American Darling Model B-62B, Dresser M & H Style 929 \"Reliant\", Mueller \"Centurion\" or \"Modern Centurion\", or approved equal (2-1/2\"/>
  - 4. All Hydrants shall be painted OSHA safety yellow or as required by local Fire District.

FIRE HYDRANT THRUST BLOCK DETAILS



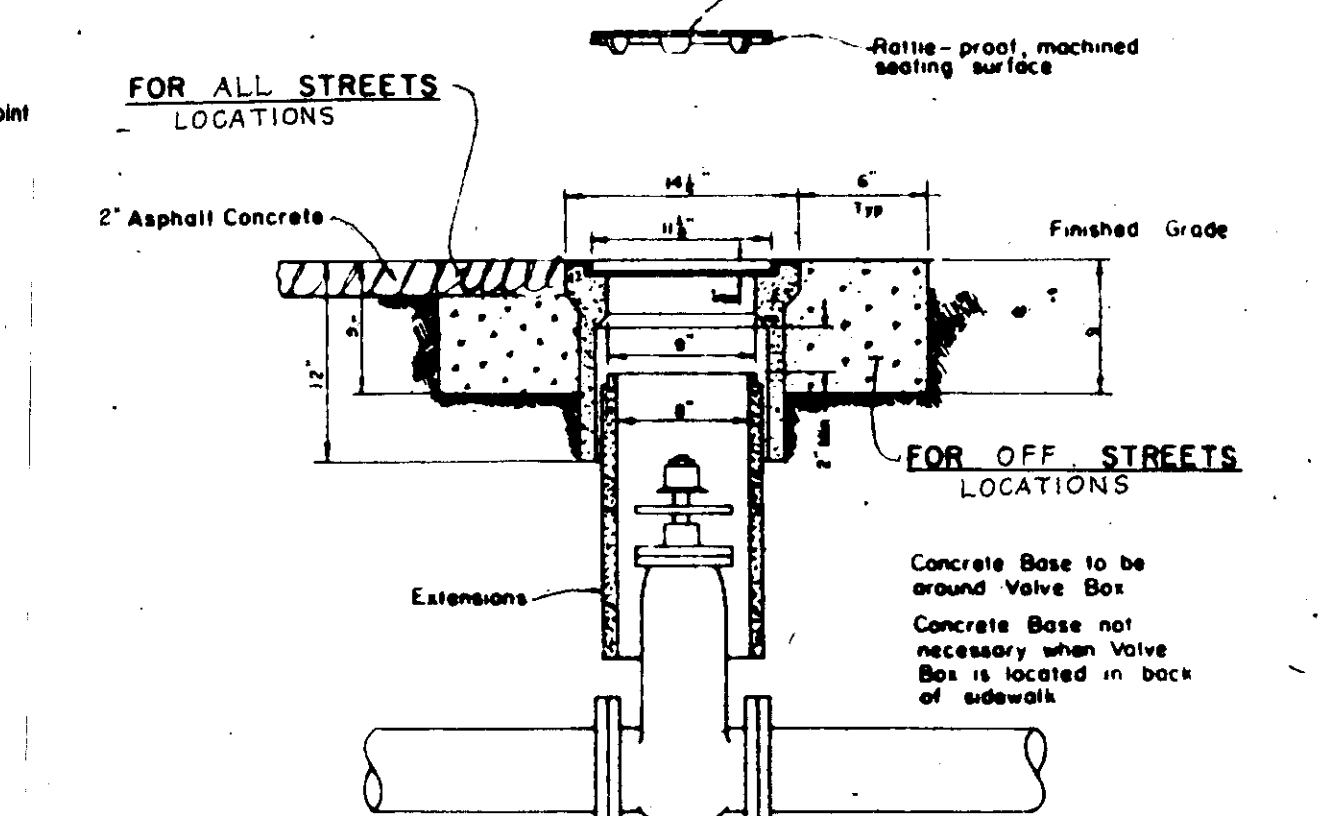
TYPICAL SANITARY SEWER DETAILS



RIGID CONDUIT FLEXIBLE CONDUIT

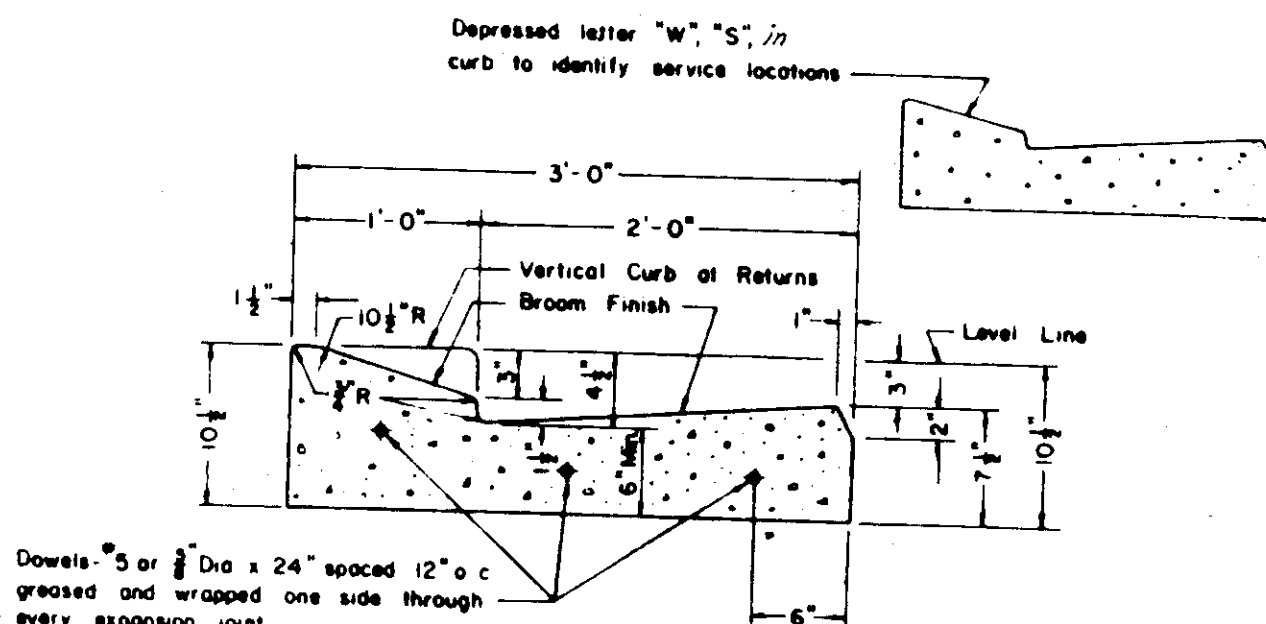
- NOTES:
1. Relative compaction of materials shall be tested by the State of California, Dept. of Transportation Testing Manual, Test Method No. C-216 or 231.
  2. All existing pavement shall be neatly cut to line prior to trench excavation.
  3. Setting or ponding will be permitted within the street Right-of-Way with 3 year bond.
  4. When shown by soil composition and compactability, ninety percent (90%) compaction may be used, when approved by the Director of Public Works.

TYPICAL TRENCH BACKFILL

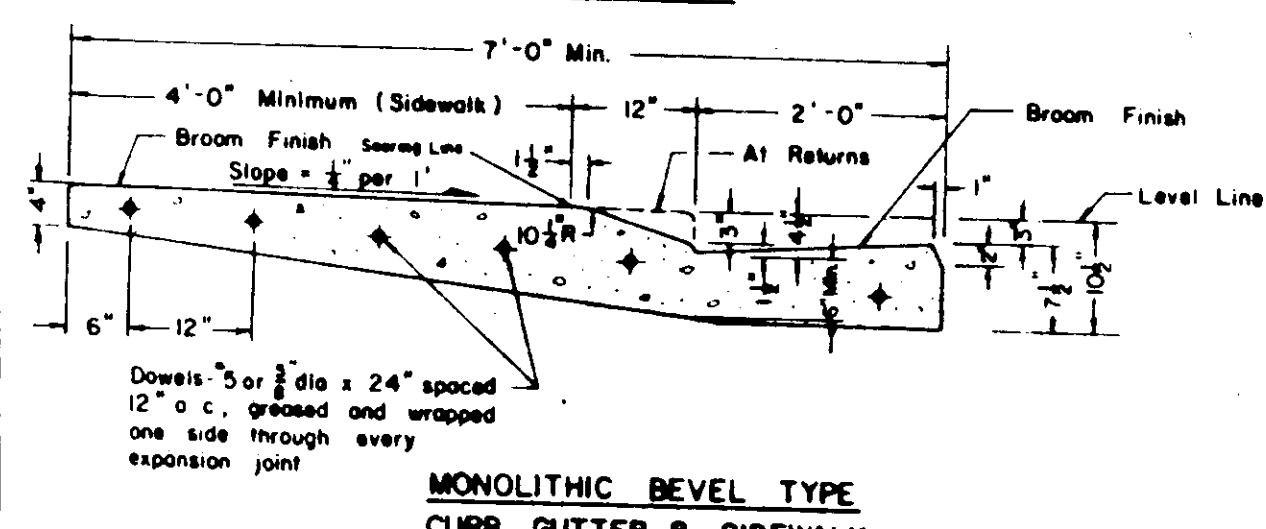


TYPICAL TRENCH BACKFILL

NOTE: All radii 3/4\"/>

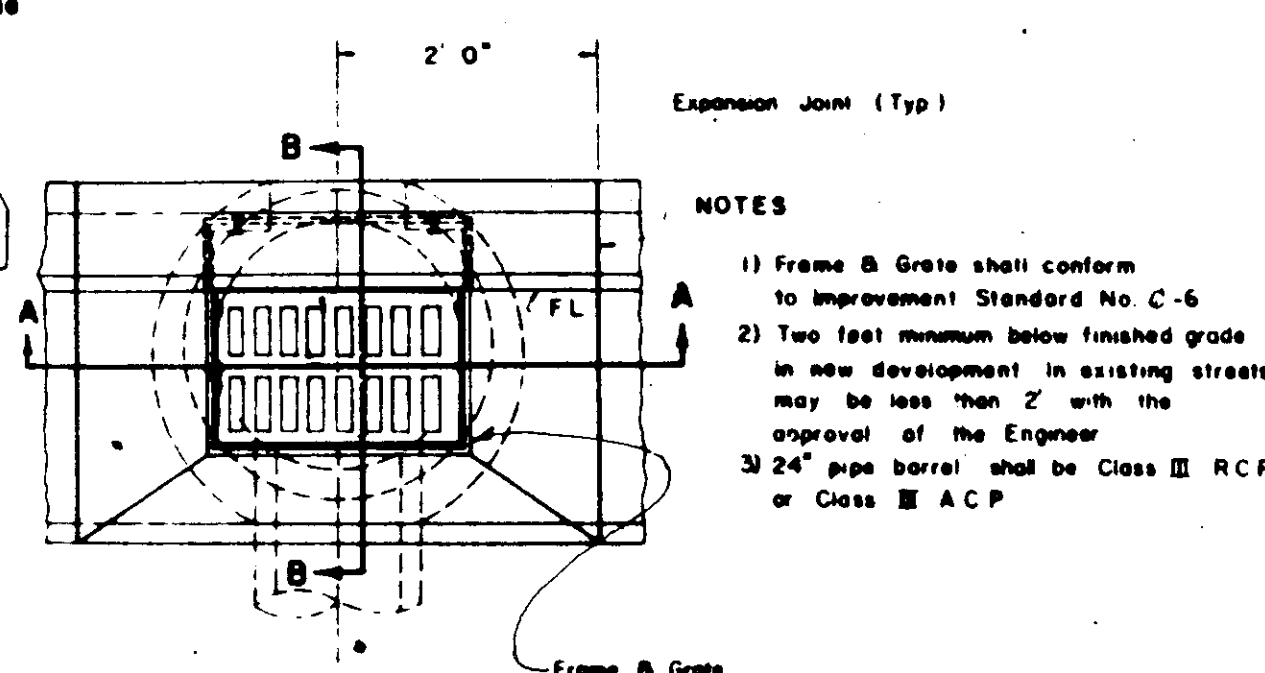


MONOLITHIC BEVEL TYPE CURB & GUTTER

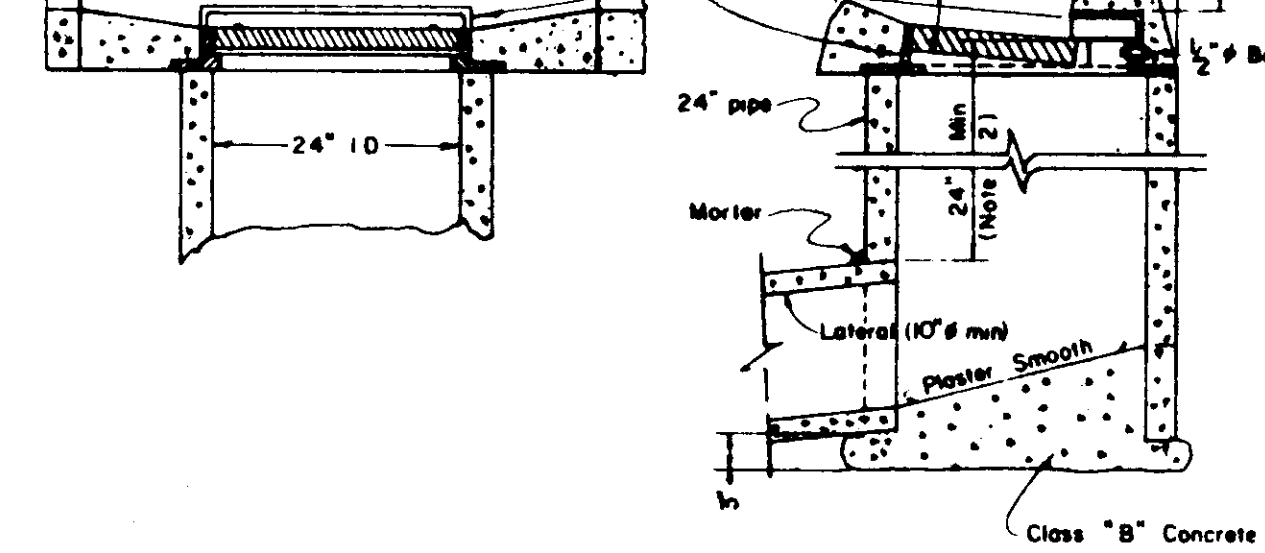


- NOTES:
1. Construct expansion joints @ 200' maximum end of returns, around light poles, hydrants and other fixed objects at sidewalk.
  2. Transverse weakened plane joints shall be constructed @ 12' maximum intervals.

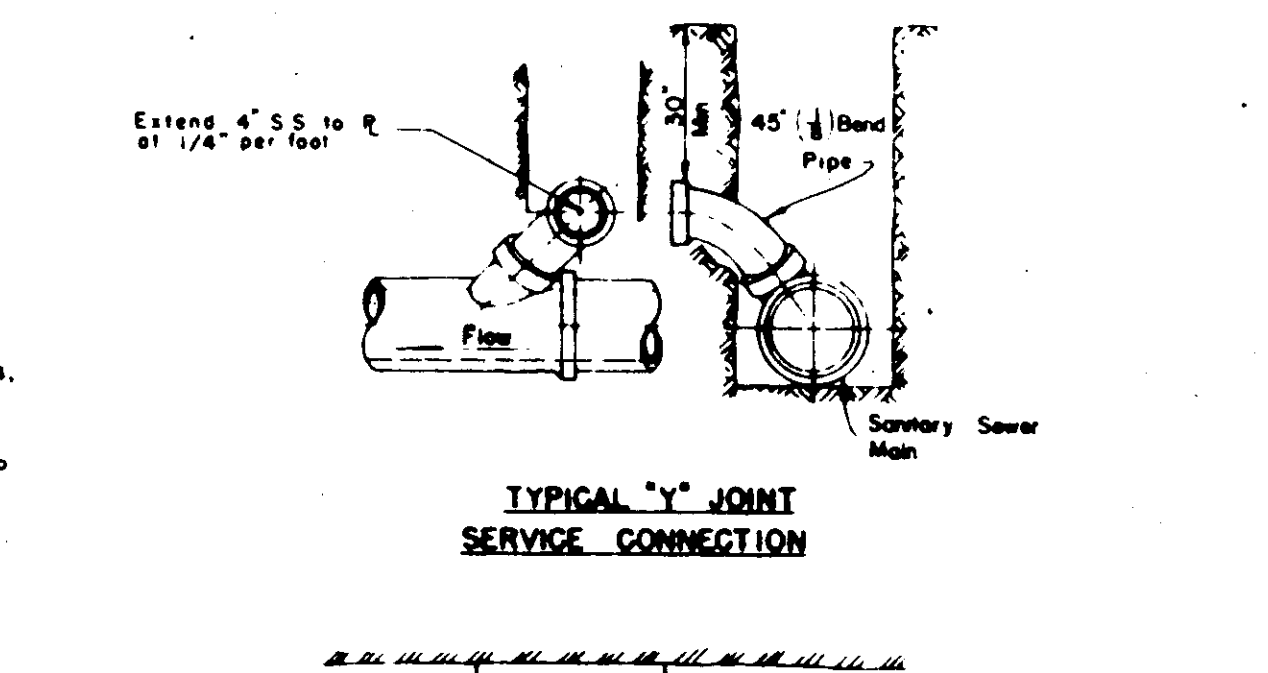
CURB GUTTER & SIDEWALK SUBDIVISION STREETS



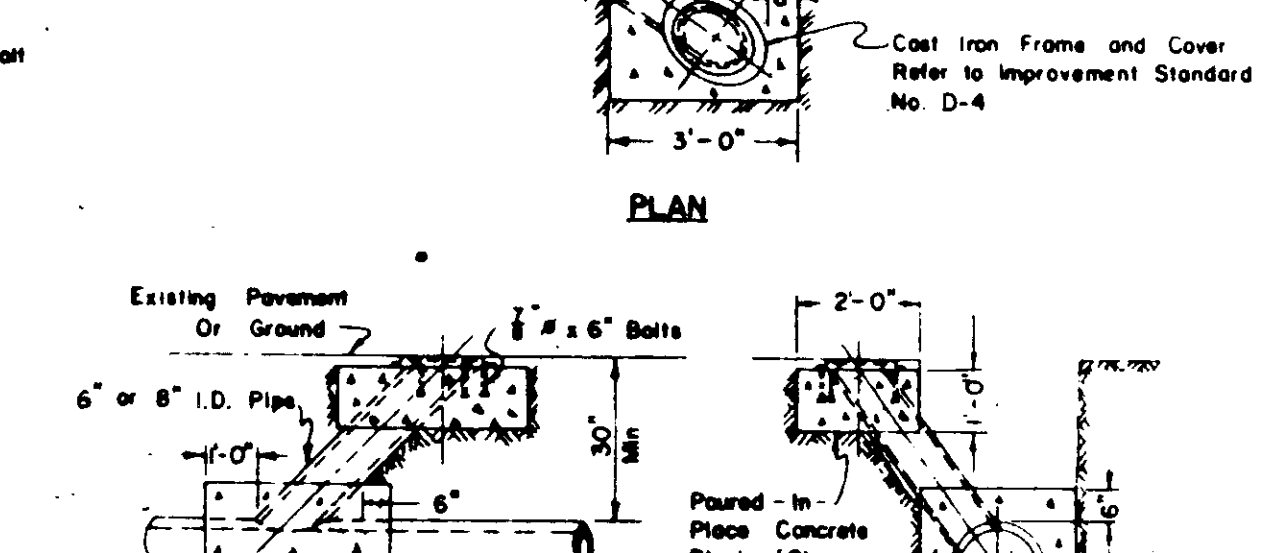
STANDARD STORM DRAIN INLET



TYPICAL LAMPHOLE INSTALLATION



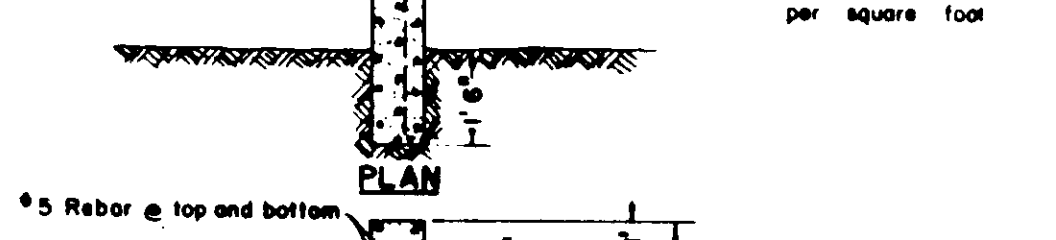
PERMANENT BLOW-OFF THRUST BLOCK DETAILS



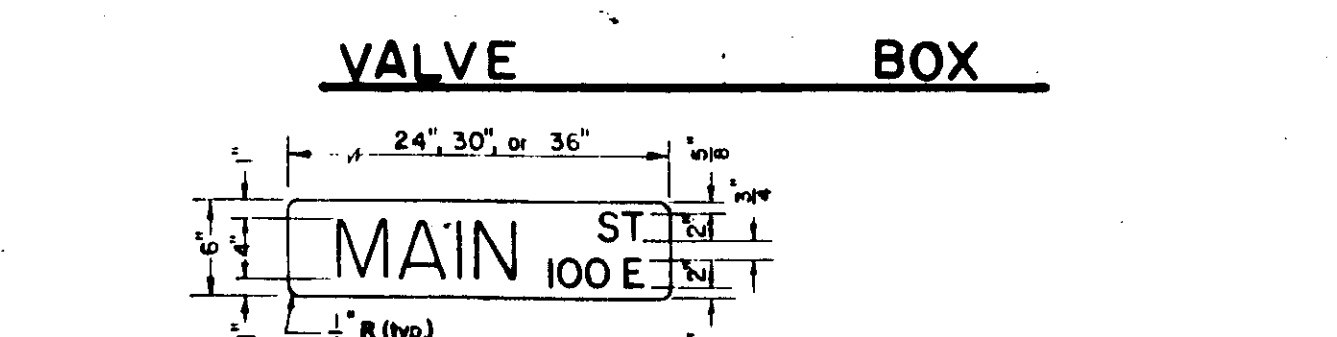
TYPICAL STREET SIGN INSTALLATION

FITTINGS	6\"/>	
	22 1/2\"/>	
45\"/>		
90\"/>		
TEE OUTLET	3'-0\"/>	
DEAD END	3'-0\"/>	
FITTINGS <th colspan="2">10\"/&gt; </th>	10\"/>	
	22 1/2\"/>	
45\"/>		
90\"/>		
TEE OUTLET	3'-0\"/>	
DEAD END	3'-0\"/>	

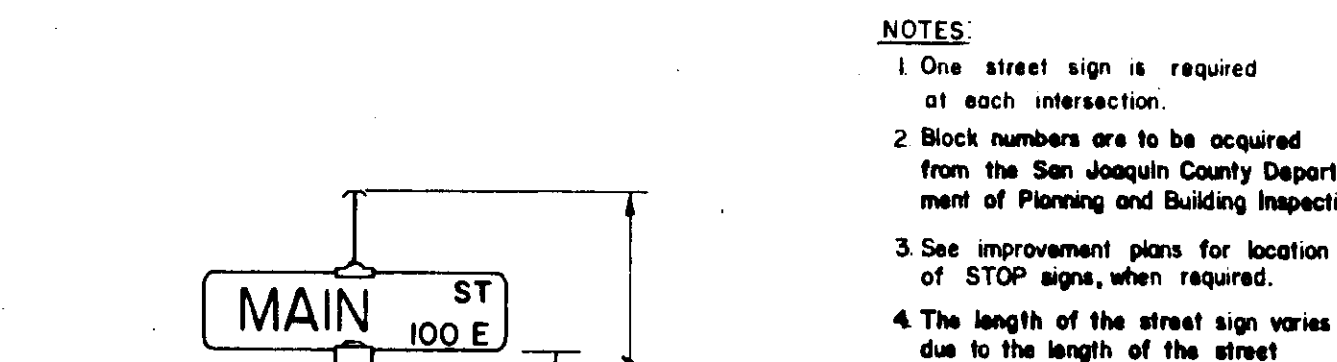
- NOTES:
1. All thrust blocks shall be poured against undisturbed soil and shall be Class \"B\" Concrete.
  2. Thrust block dimensions were calculated to allow a soil bearing value of 1,000 pounds per square foot.



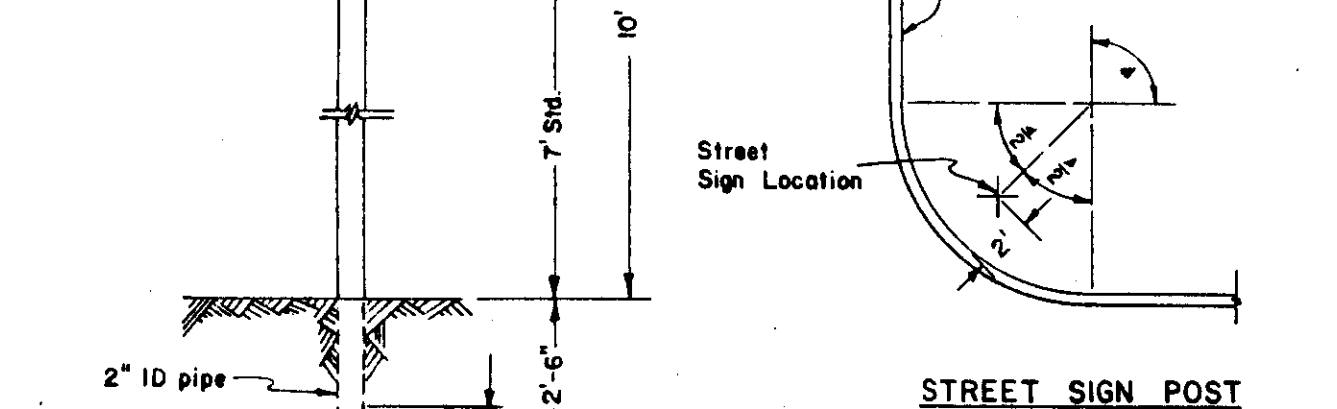
TYPICAL STREET SIGN DETAILS



VALVE BOX



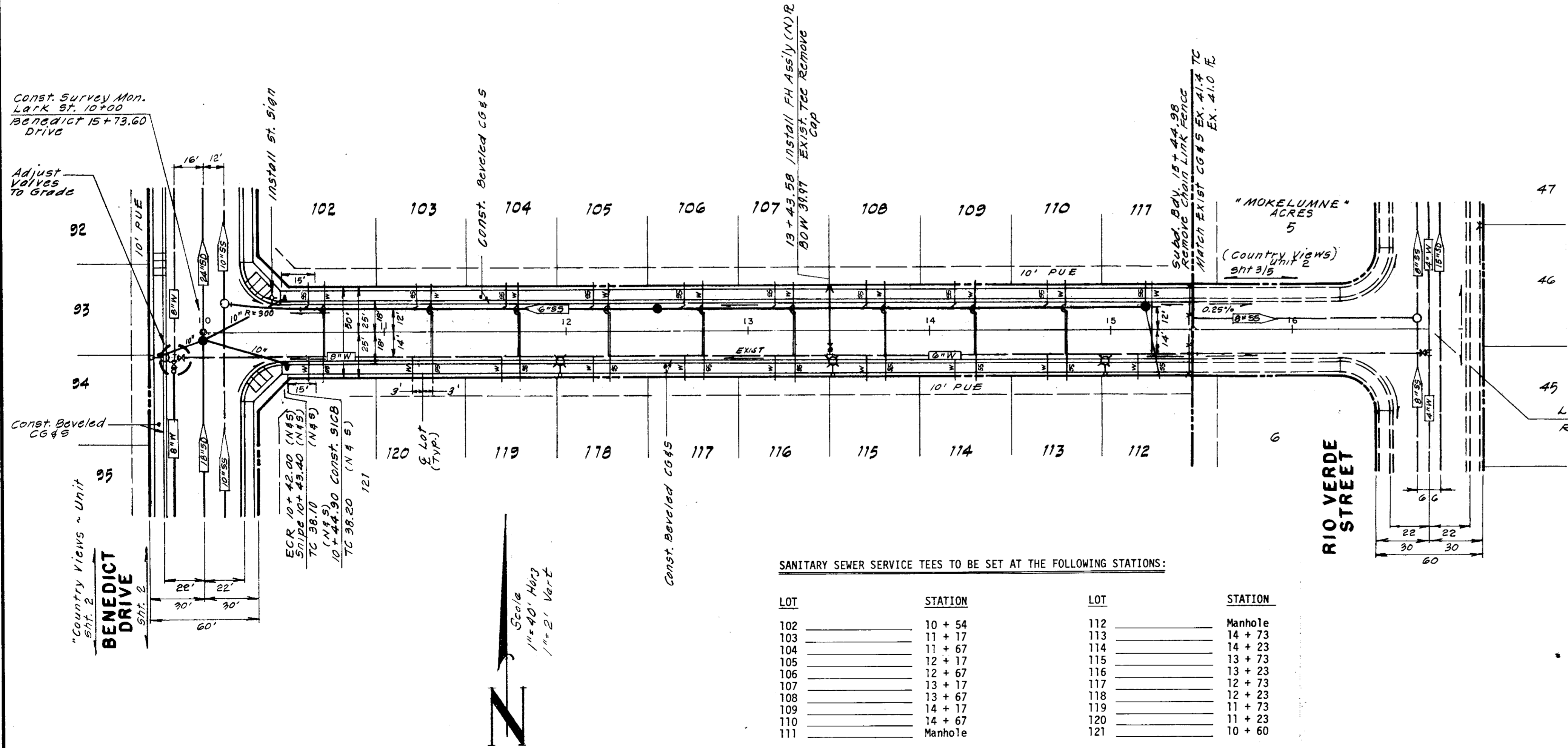
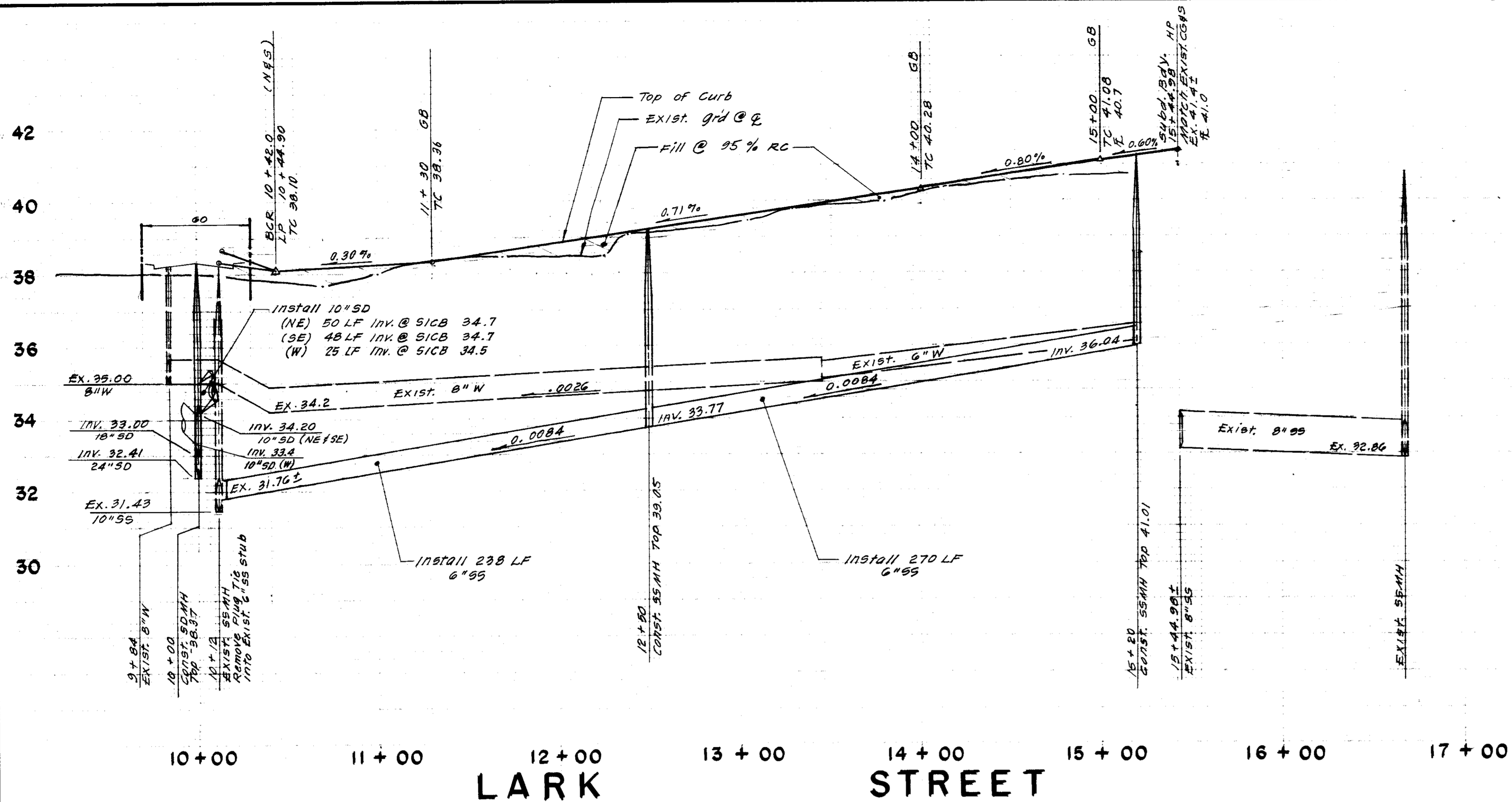
TYPICAL STREET SIGN DETAILS



STANDARD STREET SIGN DETAILS

1776





SANITARY SEWER SERVICE TEES TO BE SET AT THE FOLLOWING STATIONS:

LOT	STATION	LOT	STATION
102	10 + 54	112	Manhole
103	11 + 17	113	14 + 73
104	11 + 67	114	14 + 23
105	12 + 17	115	13 + 73
106	12 + 67	116	13 + 23
107	13 + 17	117	12 + 73
108	13 + 67	118	12 + 23
109	14 + 17	119	11 + 73
110	14 + 67	120	11 + 23
111	Manhole	121	10 + 60

NO.	DATE	REVISIONS	BY	DESIGN	DRAWN BY
1	2-24-86	Lowered street grades	RLS		

SUBMITTED BY: *[Signature]*  
 R.C.E. 14638 DATE 1-2-86

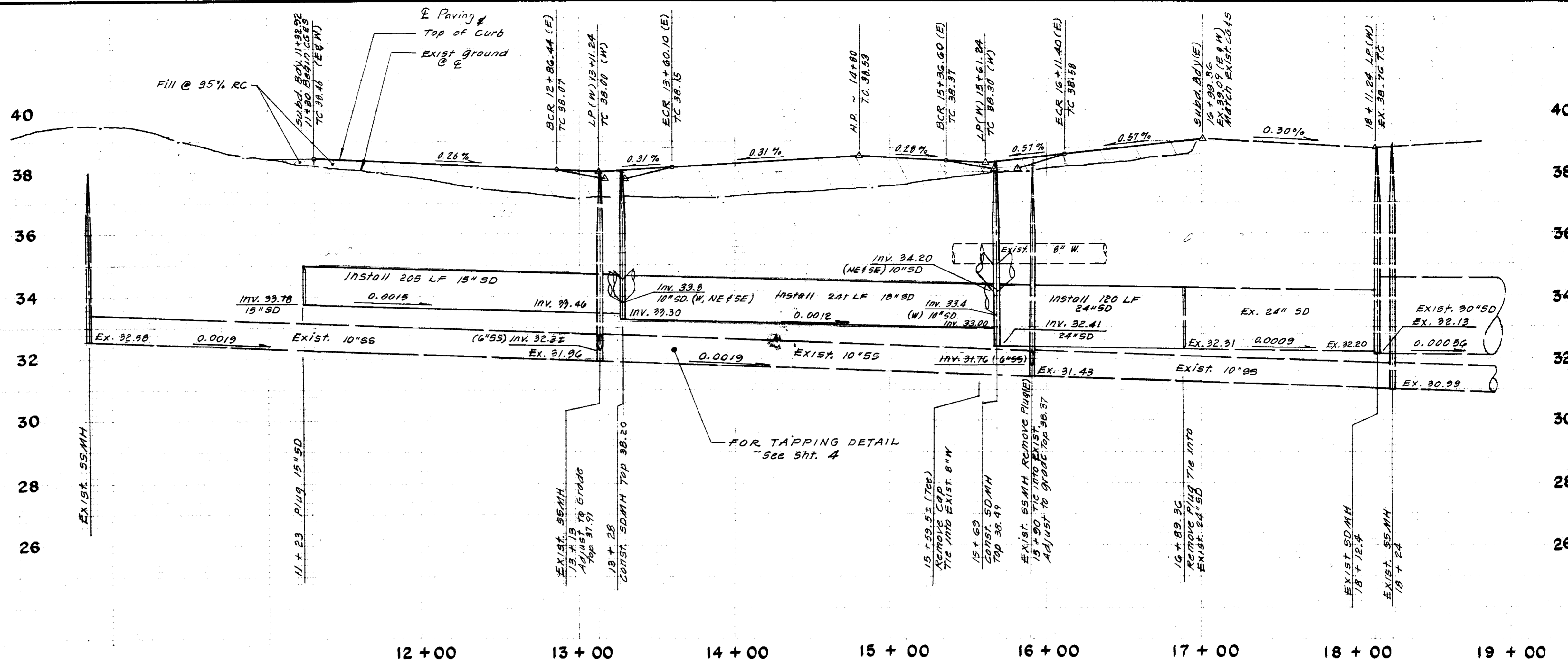
**BAUMBACH & PIAZZA**  
 CIVIL ENGINEERS - SURVEYORS  
 329 W. Elm ST., LODI, CALIF. 95240 PH. 209-368-6618

**LARK STREET**  
**BENEDICT DRIVE - RIO VERDE STREET**

**COUNTRY VIEW SUBDIVISION**  
 UNIT NO. 3  
 SUBDIVISION IMPROVEMENTS

SHEET 3 OF 7  
 JOB NO. 8905-3  
 FILE NO. G-761

Improvement SU 1778



12 + 00      13 + 00      14 + 00      15 + 00      16 + 00      17 + 00      18 + 00      19 + 00

# BENEDICT DRIVE

1" = 40' Horiz      1" = 2' Vert

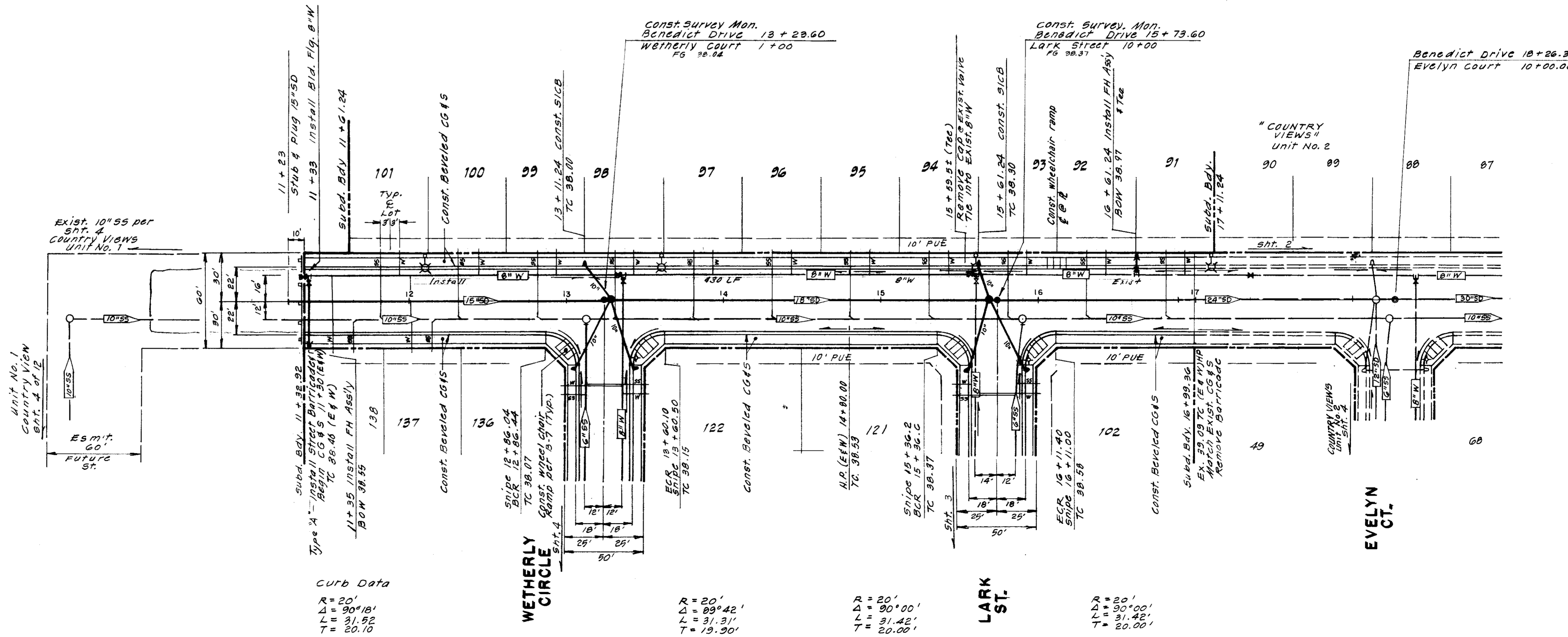
### TYPICAL FILL SPECIFICATIONS

- 1) Native material in stockpile may be used.
- 2) All fill shall be placed and compacted in 6" layers.
- 3) All fill within R/W shall be 95% R.C. and fill outside R/W shall be 90% (min.) R.C.

Use fill as needed from exist. stockpile of native material

SANITARY SEWER SERVICE TEES TO BE SET AT THE FOLLOWING STATIONS:

LOT	STATION
91	16 + 83
92	16 + 33
93	15 + 83
94	15 + 33
95	14 + 83
96	14 + 33
97	13 + 83
98	13 + 33
99	12 + 83
100	12 + 33
101	11 + 83
138	11 + 61
137	12 + 11



Curve Data  
 R = 20'  
 Δ = 90°18'  
 L = 31.31'  
 T = 20.10'

R = 20'  
 Δ = 89°42'  
 L = 31.31'  
 T = 19.30'

R = 20'  
 Δ = 90°00'  
 L = 31.42'  
 T = 20.00'

R = 20'  
 Δ = 90°00'  
 L = 31.42'  
 T = 20.00'

Improvement SU 1779

NO.	DATE	REVISIONS	BY	DESIGN	DRAWN BY
1	2-24-86	Lowered street grades	RLS		

SUBMITTED BY: *[Signature]*  
 R.C.E. 196.38 DATE 1-2-86

**BAUMBACH & PIAZZA**  
 CIVIL ENGINEERS - SURVEYORS  
 323 W. ELM ST., LODI, CALIF. 95240 PH. 209-368-6618

**BENEDICT DRIVE**  
 190'S/WETHERLY CIR.-740'S/WOODBRIDGE RD.

**COUNTRY VIEW SUBDIVISION**  
 UNIT NO. 3  
 SUBDIVISION IMPROVEMENTS

SHEET 2 OF 7  
 JOB NO. 8908-3  
 FILE NO. G-761

# CONSTRUCTION QUANTITIES

STREET SYSTEM	
Roadway Excavation	1300 C.Y.
Import	Lump Sum
Compact Original Ground	58,000 S.F.
Aggregate Base Cl. II (0.25')	35,340 S.F.
Aggregate Base Cl. II (0.33')	22,660 S.F.
Asphalt Concrete Type "B" (0.17')	35,340 S.F.
Beveled Curb, Gutter & Sidewalk	3,015 L.F.
Street Sign	3 Each
Street Light	By P. G. & E.
Concrete Subgrade Compaction	21,635 S.F.
Dead End Barricade	2 Each
Survey Monument Box	3 Each
Asphalt Concrete Type "B" (0.20')	22,660 S.F.

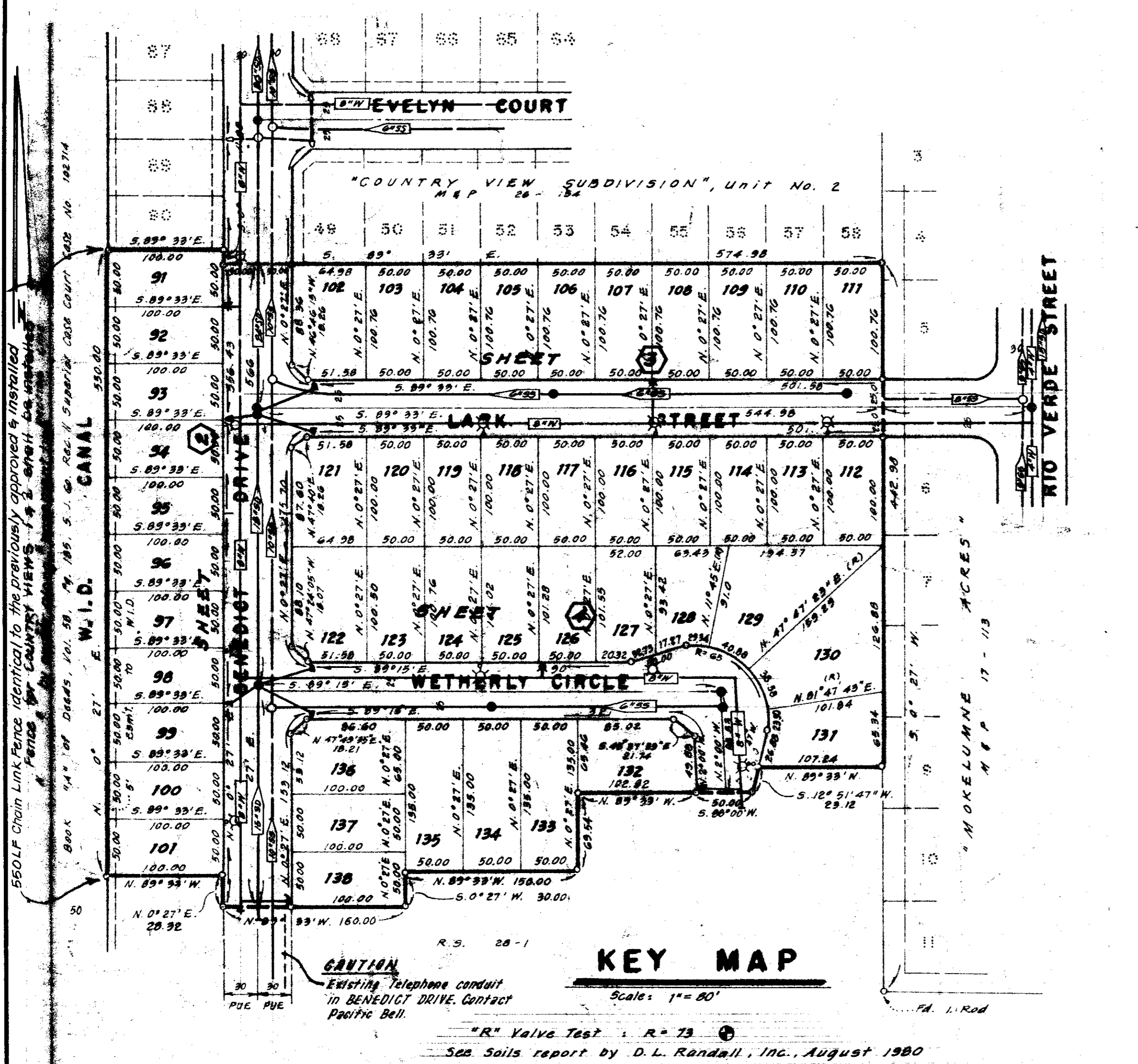
STORM DRAIN SYSTEM	
10" Storm Drain	247 L.F.
15" Storm Drain	205 L.F.
18" Storm Drain	241 L.F.
24" Storm Drain	120 L.F.
Side Inlet Catch Basin	6 Each
48" Storm Drain Manhole	2 Each

WATER SYSTEM	
8" Water	958 L.F.
8" Valve	4 Each
Fire Hydrant Assembly (Rich Ranger #960)	5 Each
Services	48 Each

SANITARY SEWER SYSTEM	
6" Sanitary Sewer	897 L.F.
48" Sanitary Sewer Manhole	4 Each
Services	48 Each

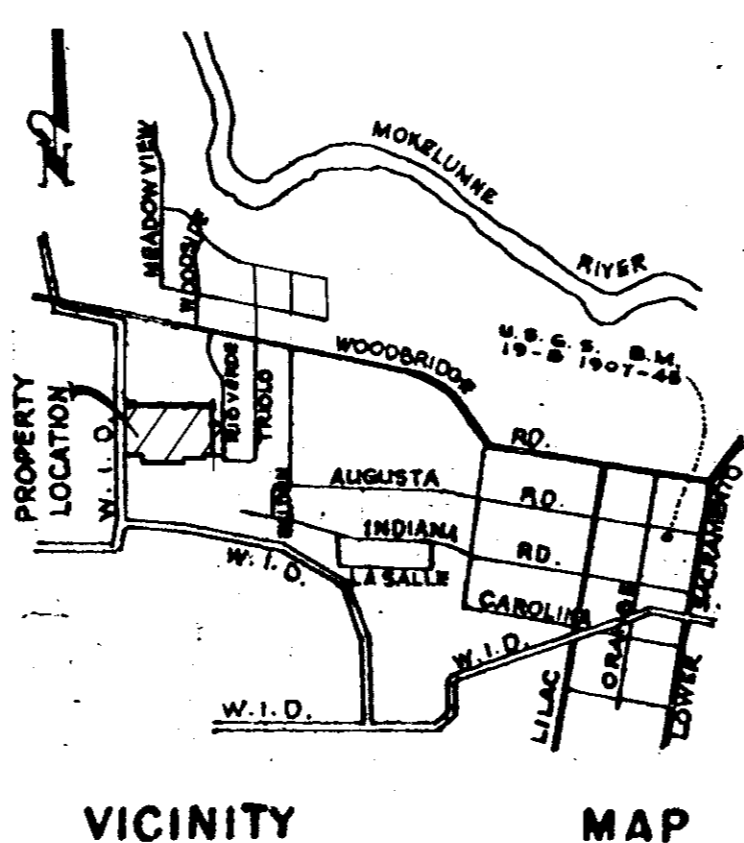
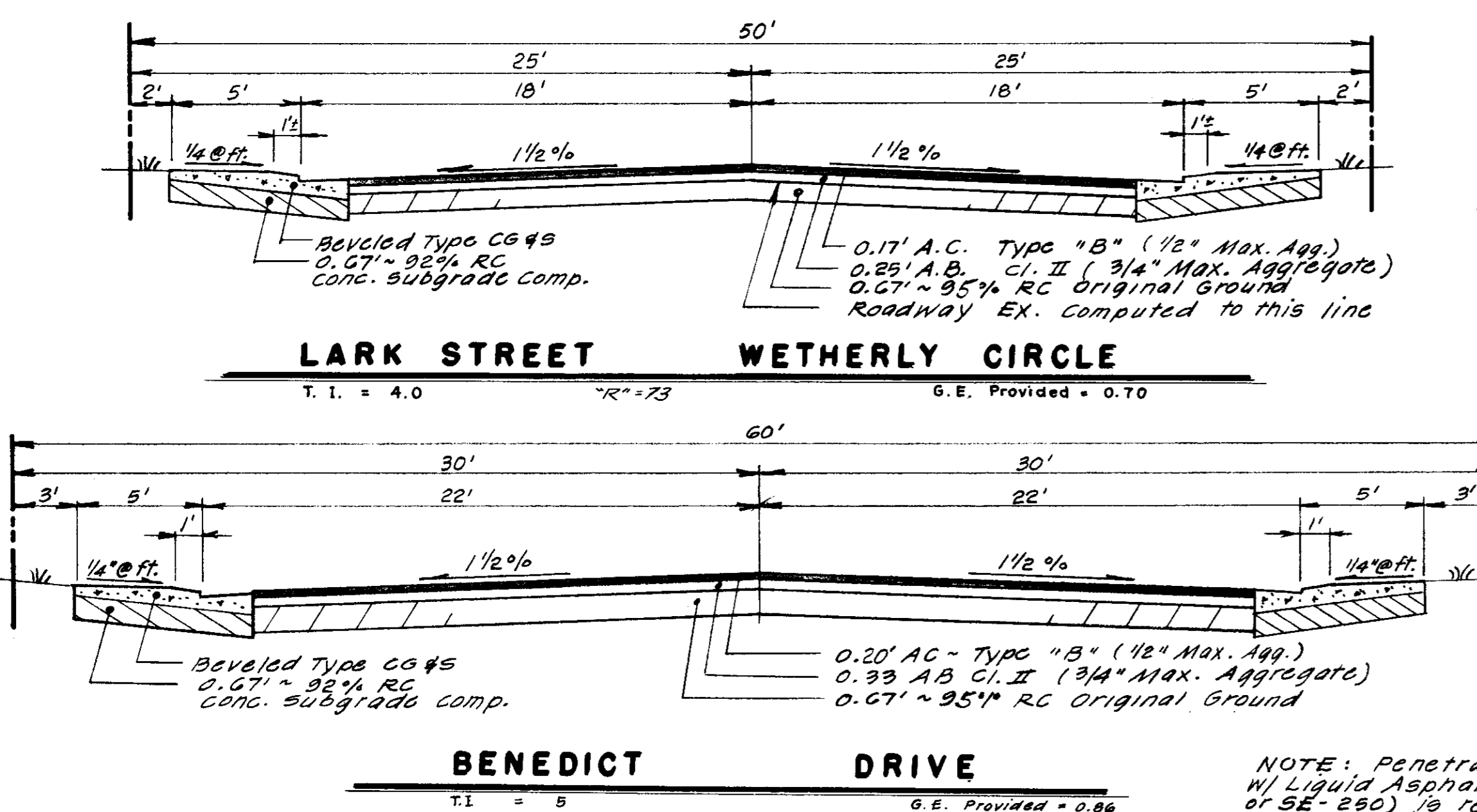
# GENERAL NOTES

- All work shall conform to these plans and any special provisions for this project.
- Refer to the final map of this subdivision for all centerline and property line data.
- The street light system shall be installed by Pacific Gas & Electric Company.
- Contractor shall receive an approved set of plans prior to beginning construction.
- Baumbach & Piazza (Engineer) shall set all survey controls and construction stakes necessary for completion of work. The Contractor shall be responsible for the preservation of all survey and construction stakes. Survey and construction stakes that are lost or destroyed due to Contractor's negligence will be set by the Engineer at the Contractor's expense.
- The existing underground utilities were plotted from available records. The Contractor shall be responsible for contacting all utility agencies to mark their facilities in the field before any excavation. The Contractor shall notify and co-ordinate all work with any agency requiring removal or relocation of their utilities. Pacific Bell, P. G. & E., Lodi Cable T.V., Woodbridge Sanitary District and Woodbridge Lighting District. : USA (800)642-2444.
- Contractor shall be responsible for notifying and co-ordinating all work with any agency requiring removal or relocation of utilities, such as Pacific Bell, P.G.&E., etc.
- House services, fire hydrant laterals, and street light conduit shall be installed prior to curb and gutter construction. All underground utilities within the street area, including gas and telephone lines, shall be installed prior to paving.
- All manholes to be set flush with finish grade unless otherwise indicated.
- All water lines shall have a minimum cover of 3' - 0".
- All existing irrigation lines within the right of way shall be crushed in place or removed.
- Water used in any phase of construction, such as backfill compaction, dust control, testing or other work herein required, shall be included in the unit price or lump sum bid for the respective items of construction.
- Contractor agrees that he shall assume sole and complete responsibility for job site conditions during the course of construction of this project, including safety for all persons and property; that this requirement shall apply continuously and not be limited to normal working hours and that Contractor shall defend, indemnify, and hold the Owner and the Engineer harmless from any and all liability, real or alleged, in connection with the performance of work on this project, excepting for liability arising from the sole negligence of the Owner or the Engineer.
- Contractor shall give Engineer a minimum of 48 hours notification prior to staking any utilities.
- Water services shall be marked by the curb and gutter Contractor with "W" stamped on the top of curb. Sewer Services shall be similarly marked with an "S".
- All work will be required to be inspected by the Department of Public Works. They shall be notified not less than 24 hours in advance of commencement of work.
- Lot grading shall be completed before starting any underground construction. Refer to attached grading plan.
- Each SS service to have C.O. at property line. See detail on SHF. G.
- Note that sanitary inspection will be performed by San Joaquin County Department of Public Works and Woodbridge Sanitary District Engineer and /or District staff (Kjeldsen-Simcock & Associates 209-946-0268). Must have inspection before backfill and notify inspector 48 hours prior.
- No materials resulting from tapping procedures may enter District sewer.
- Separation of water and sewer mains (including crossings) and sewer laterals crossing over water mains shall meet or exceed the latest standards of the State of California Department of Health Services. Where water crosses SD or SS use an 18-20 ft. length of Cl. 200 pipe, centered over the SS or SD if: a) The water is under the SS or SD. b) The vertical clearance is less than 1 ft.
- It is agreed that field conditions may require changes to these plans. It is further agreed that the Director of Public Works may require changes, alterations or additions to these plans, when the Director deems them to be necessary or desirable for the proper completion of the work, provided that such changes, alterations or additions shall not exceed 10% of the original estimate of the cost for the improvements without prior approval of the surety.
- Fire Hydrant bid shall include the following: Tee, 6" Lateral, 6" Valve and complete fire hydrant assembly.
- All water lines shall be pressure tested, disinfected, flushed and tested for bacteria in conformance with the San Joaquin County Health Code Requirements prior to connecting to existing water line. Contractor shall notify Mokelumne Acres Maintenance District for approval prior to connecting water line to existing water line.



# STRUCTURAL SECTIONS

SCALE: 1" = 5'  
 NOTE: All Roadway Fill to be 95% RC Min.  
 All Lot Fill to be 90% RC Min.



Benchmark Datum per U.S.G.S. B.M. 1907-48. Location NW corner of Masonic Building in the Town of Woodbridge. Elevation = 46.40

SERVICES	
Street Lights	Woodbridge Lighting District
Sewage	Woodbridge Sanitary District
Natural Gas & Electric	P. G. & E.
Telephone	Pacific Bell
Television Cable	Lodi Cable T. V.
Water	Mokelumne Acres Maintenance district
Storm Drainage	>

LEGEND	
S.I.C.B. or	Side Inlet Catch Basin
L.P.	Low Point
H.P.	High Point
T.C.	Top of Curb
C.O.T.G.	Clean Out to Grade
S.D.	Storm Drain Line Indicating Direction of Flow
S.S.	Sanitary Sewer Line Indicating Direction of Flow
W.	Water Line
⊕	Fire Hydrant
⊙	Street Light

# SHEET INDEX

- ① — KEY SHEET
- ②, ③, ④ — PLAN & PROFILE
- ⑤, ⑥ — DETAILS
- ⑦ — GRADING PLAN

# APPROVED BY

<i>[Signature]</i>	11-20-85
SAN JOAQUIN LOCAL HEALTH DISTRICT	DATE
<i>[Signature]</i>	11-29-85
SAN JOAQUIN FIRE WARDEN	DATE
<i>[Signature]</i>	11-22-85
CHIEF WOODBRIDGE FIRE DISTRICT	DATE
<i>[Signature]</i>	11-20-85
ENGINEER WOODBRIDGE SANITARY DISTRICT	DATE

Improvement SU 1786

NO.	DATE	REVISIONS	BY	DESIGN	DRAWN BY	APPROVED	DATE
1	2-24-86	Lowered street grades	RLS			<i>[Signature]</i>	1986
						<i>[Signature]</i>	1-2-86

**BAUMBACH & PIAZZA**  
 CIVIL ENGINEERS  
 SURVEYORS  
 323 W. ELM ST. LODI, CALIF.  
 95240 PH: 209-368-8818

KEY SHEET

COUNTRY VIEW SUBDIVISION  
 UNIT NO. 3  
 SUBDIVISION IMPROVEMENTS

SHEET ① OF 7  
 JOB NO. 8909-3  
 FILE NO. G-761