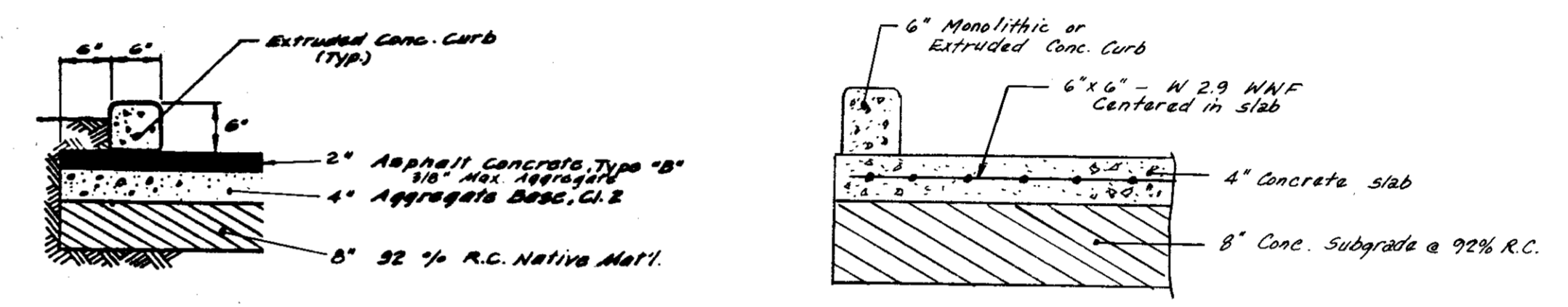
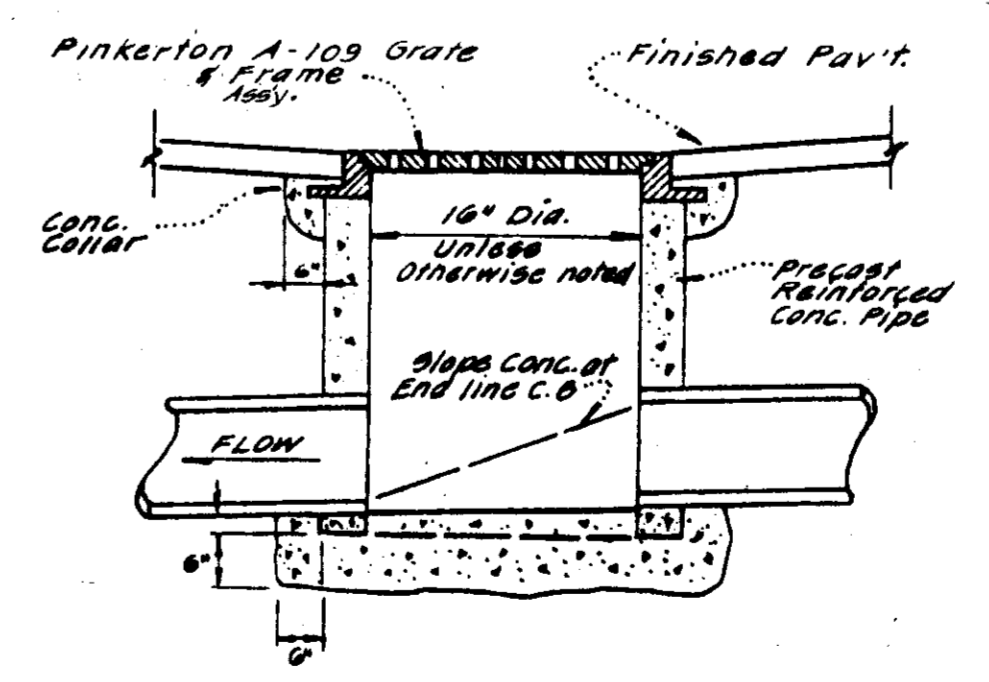


SECTION A-A
TYPICAL ALLEY SECTION
N.T.S.



ALTERNATE SECTIONS - PARKING LOT
N.T.S.

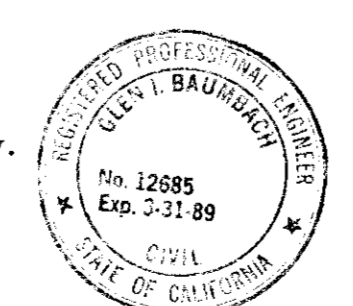
- NOTES:
- Parallel parking area to be graded according to these plans and must drain westerly or north-westerly. *Pave w/ 2" AC over 6" CG.*
 - All sidewalks to have 2% cross-slope away from building.



CATCH BASIN

LEGEND

- | | | | |
|-----------------|------------------------|------------|---------------------------------------|
| 44.41 BOW | Back of Sidewalk Elev. | 8" W | Water Line |
| AA ³ | Existing Ground Elev. | 18" SD | Storm Drain |
| 43.92 | Existing Paving Elev. | SS | Sanitary Sewer |
| 1.10 % | Drainage Slope | Manhole | Manhole |
| → | Fire Hydrant | DICB | Direct Inlet Catch Basin |
| ⊙ | Existing Tree | 45.7 TC | Top of Curb, Paving Elev. |
| ⊙ | Street Light | 44.40 Top | Top of Grate Elev., Pipe Invert Elev. |
| | | 41.20 Inv. | |
| | | 43.84 EG | Finish Grade Elevation |



50-1953

NO.	DATE	REVISIONS	BY

DESIGN GIB-SEP DRAWN BY JM
 APPROVED BY *Guy B. Baumbach*
 R.C.E. 12685 DATE 7/16/87

BAUMBACH & PIAZZA
 CIVIL ENGINEERS
 SURVEYORS
 323 W. ELM ST. LODI, CALIF.
 95240 PH: 209-368-6518

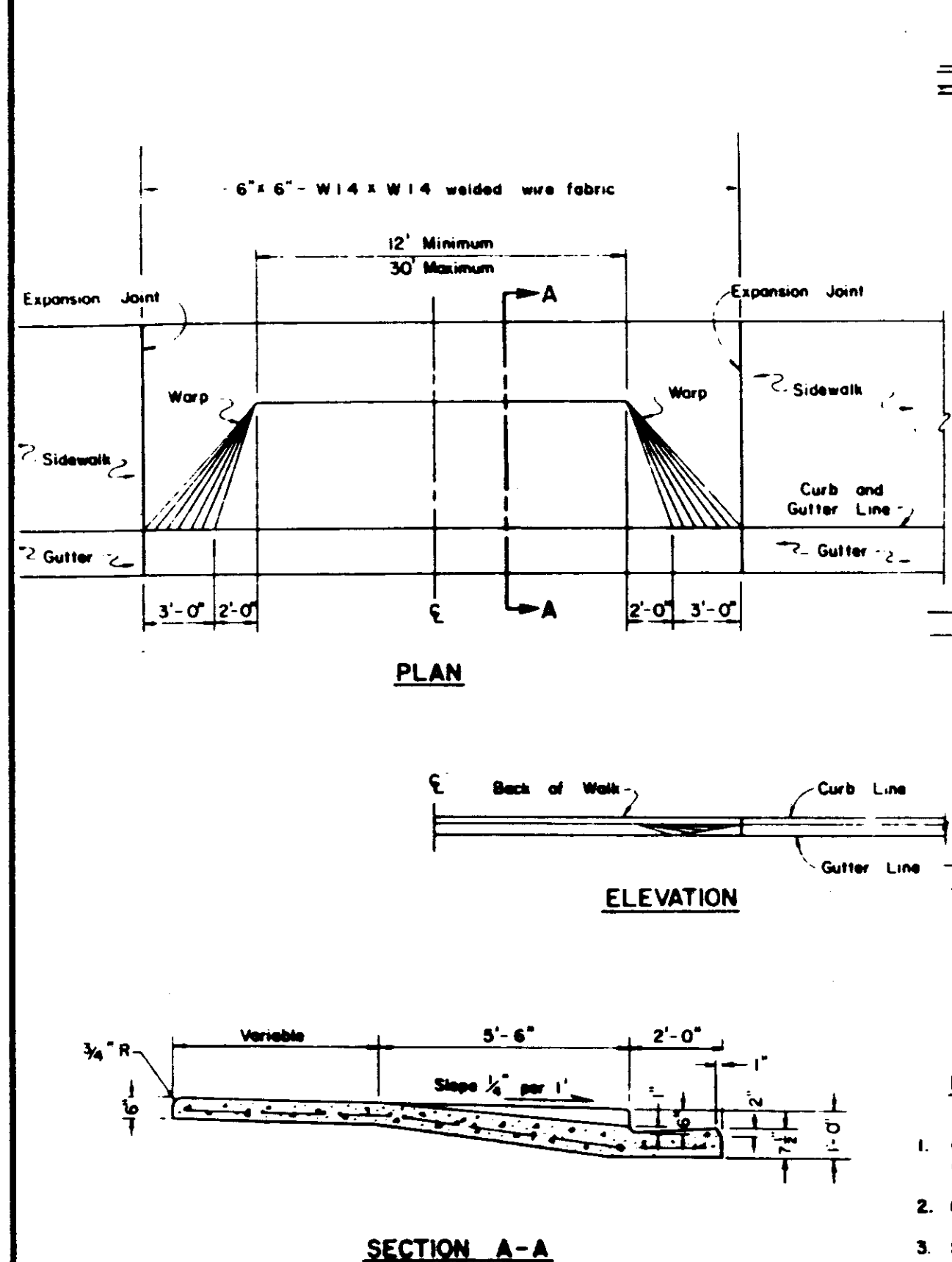
Prepared For:
 OAKWOOD GROUP
 301 W. LOCUST STREET
 LODI PH: 369-8400

ON - SITE
MAIN STREET (LO. SACRAMENTO RD.)
INDIANA STREET
 STREET IMPROVEMENTS

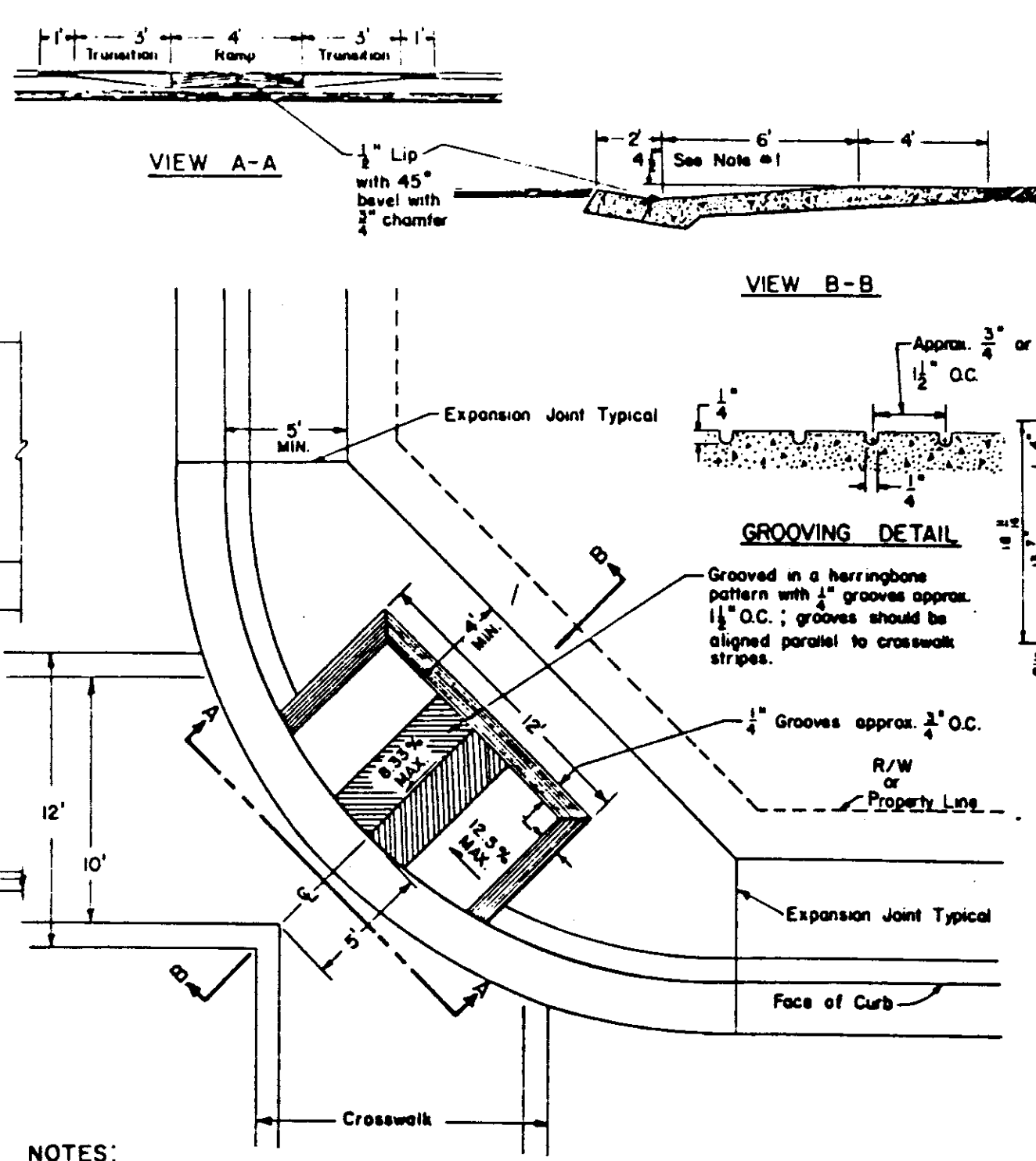
SHEET 7 OF 7
 JOB NO. 8724
 FILE NO. **G-830**

Scale: 1" = 20'

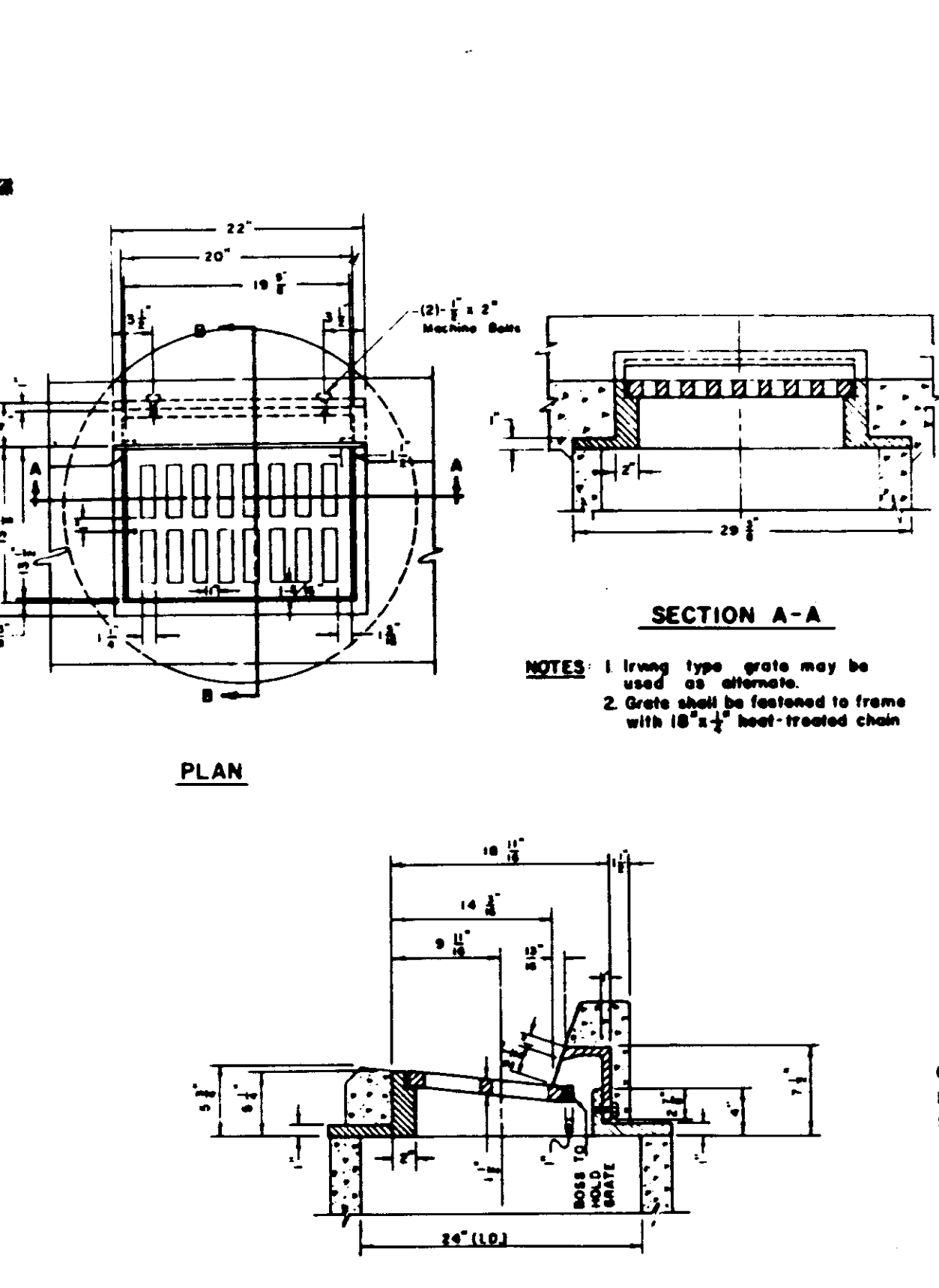
FOR ADDITIONAL DETAILS SEE SPECIFICATIONS



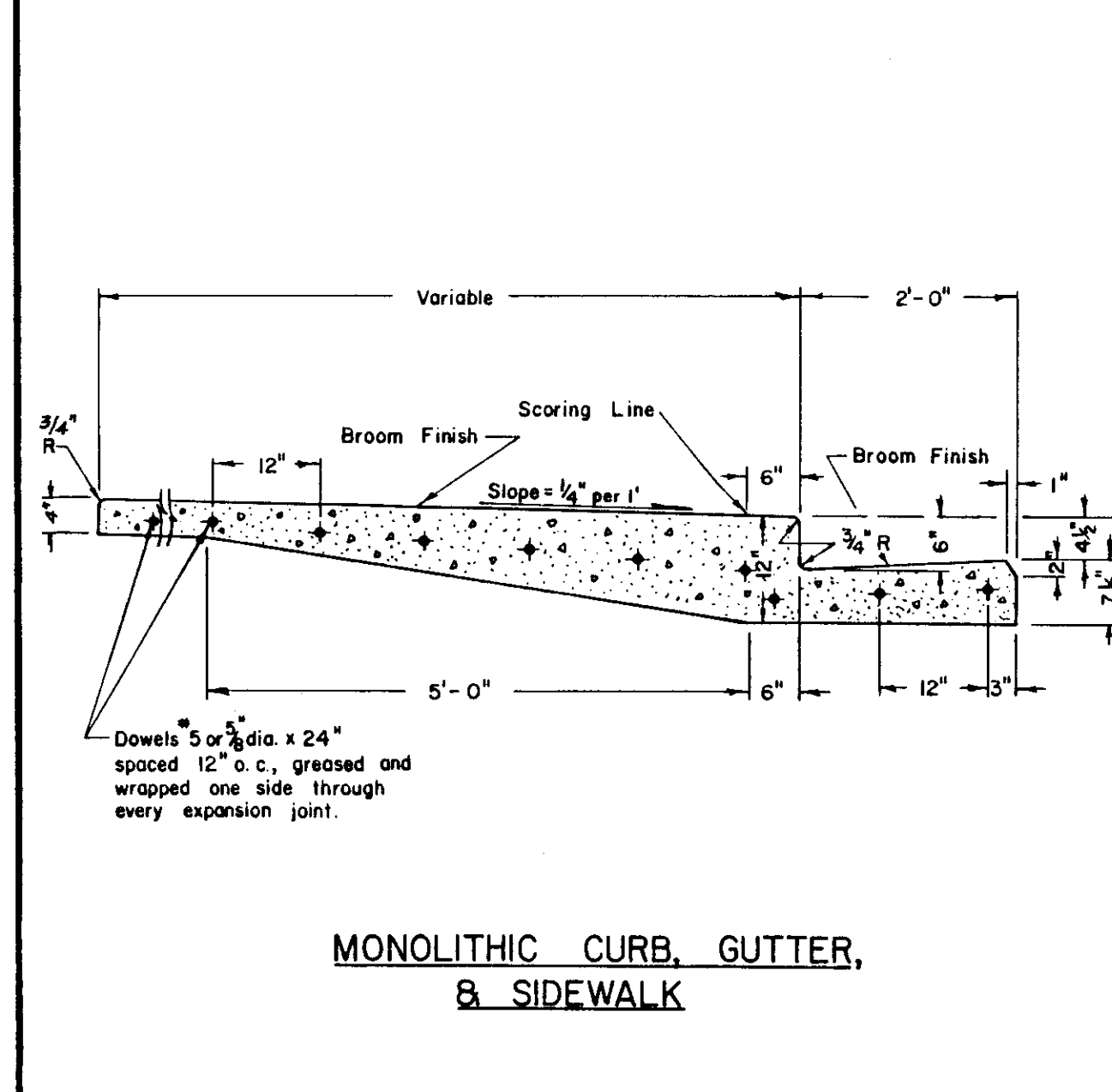
TYPICAL COMMERCIAL DRIVEWAY



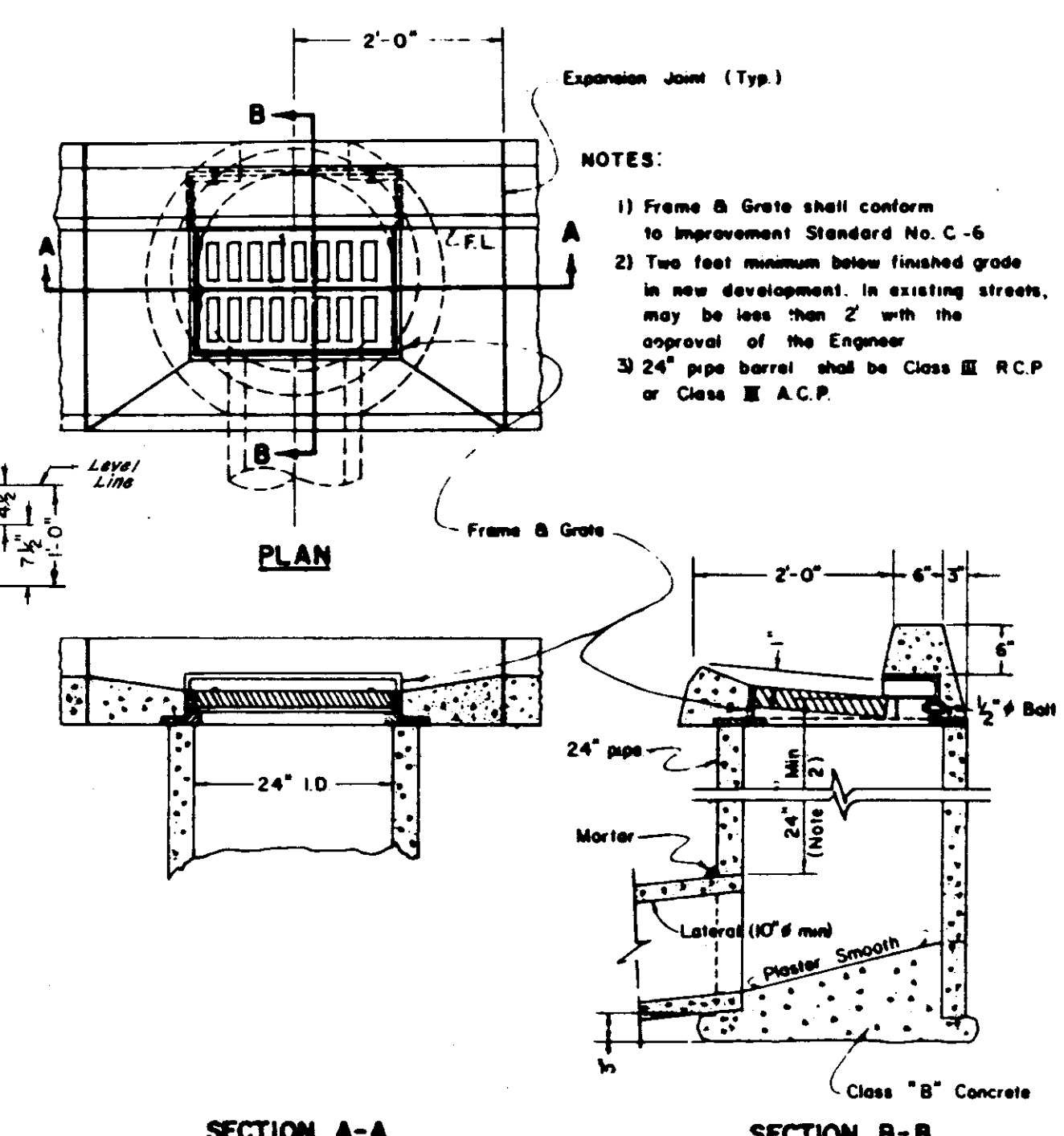
HANDICAP RAMP



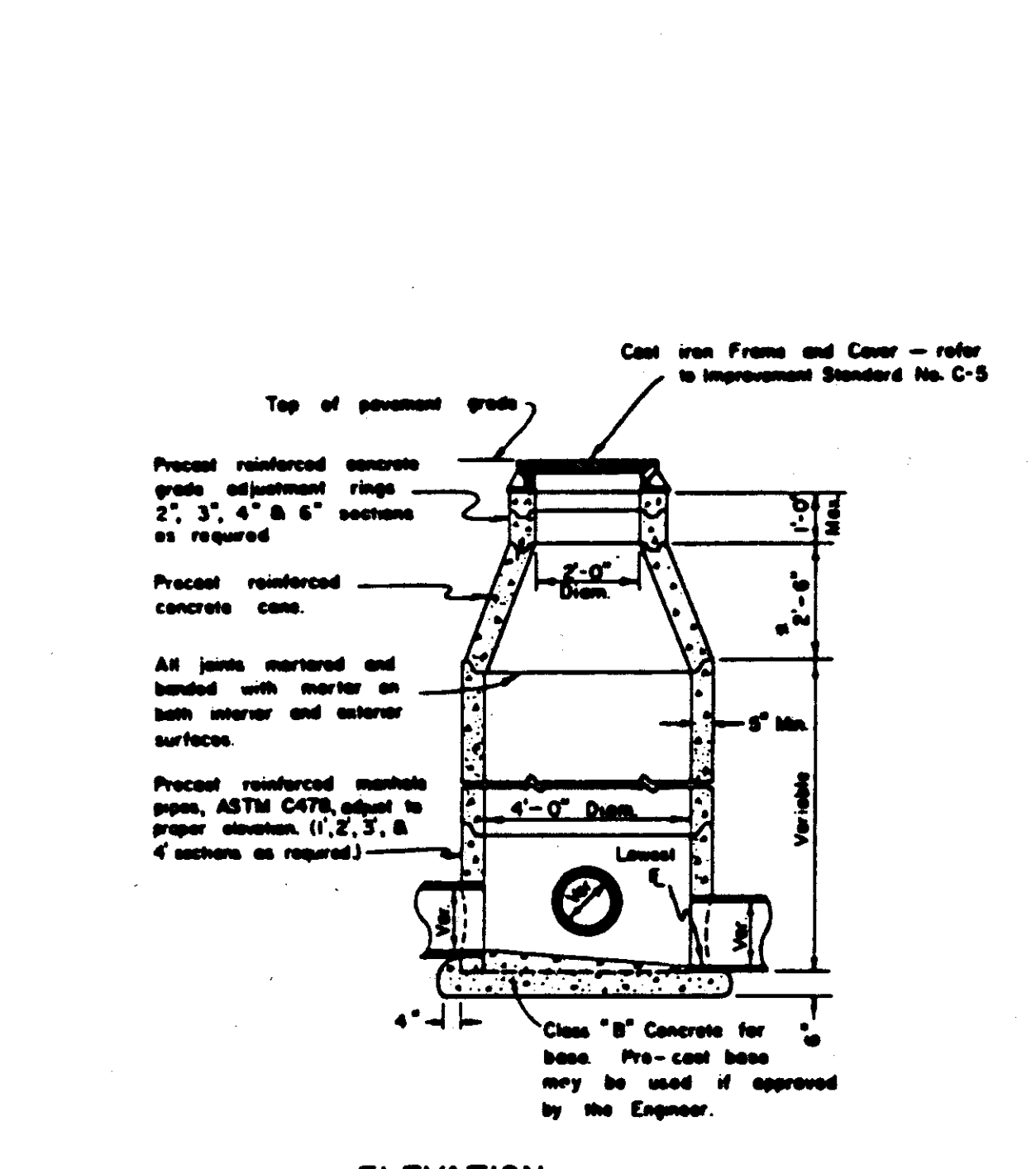
FRAME & GRATE (STANDARD STORM DRAIN INLET)



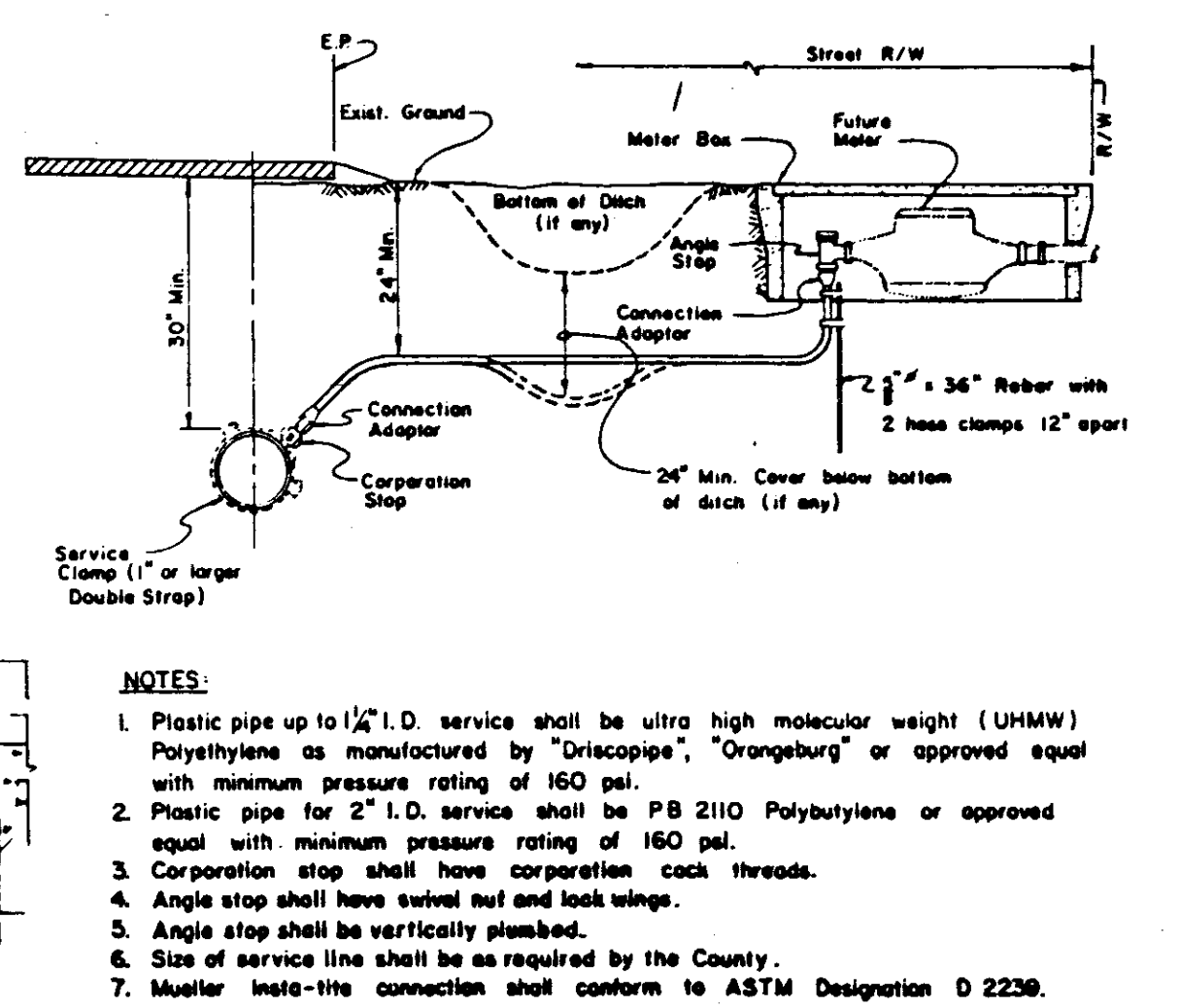
MONOLITHIC CURB, GUTTER, & SIDEWALK



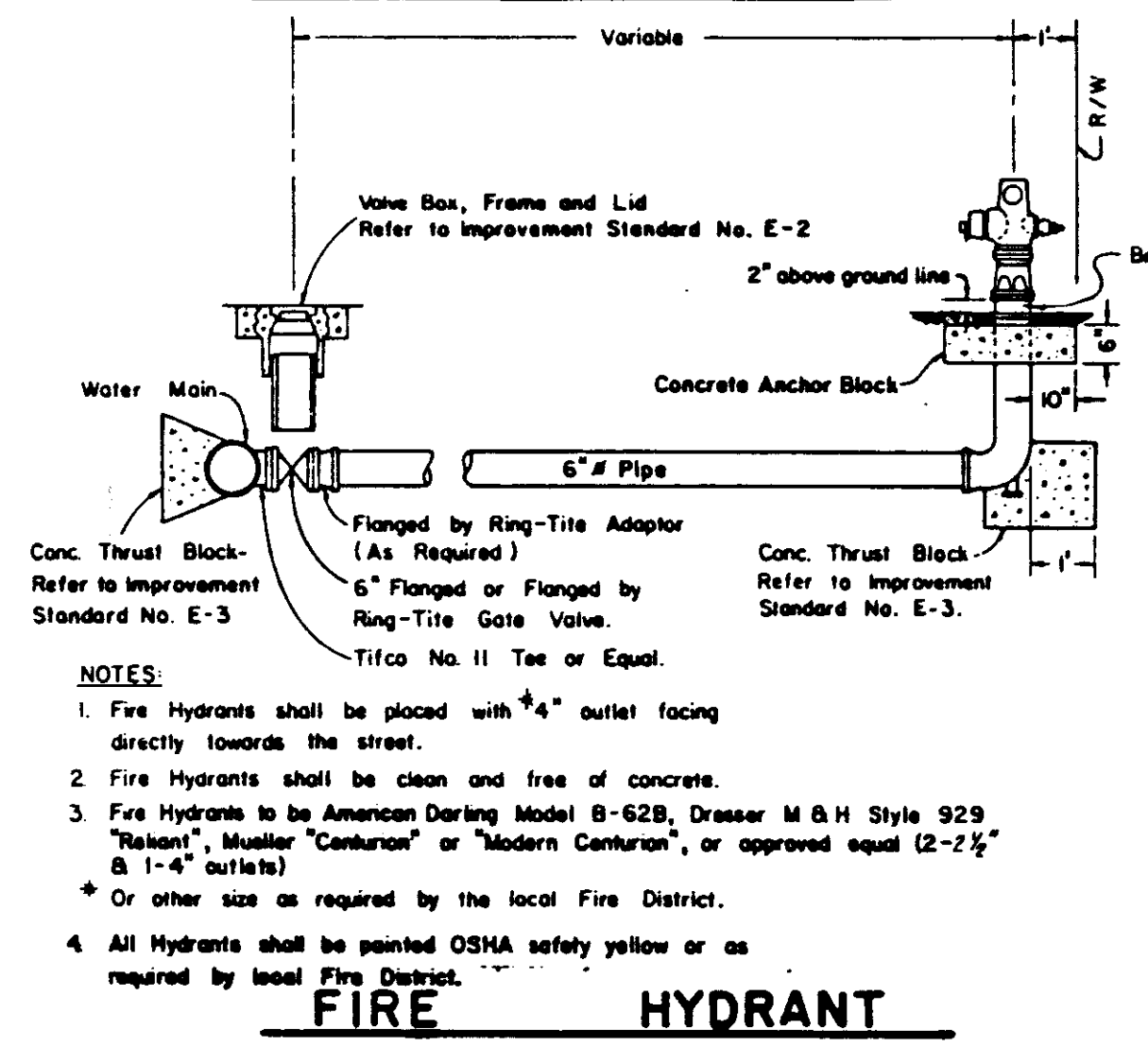
STANDARD STORM DRAIN INLET



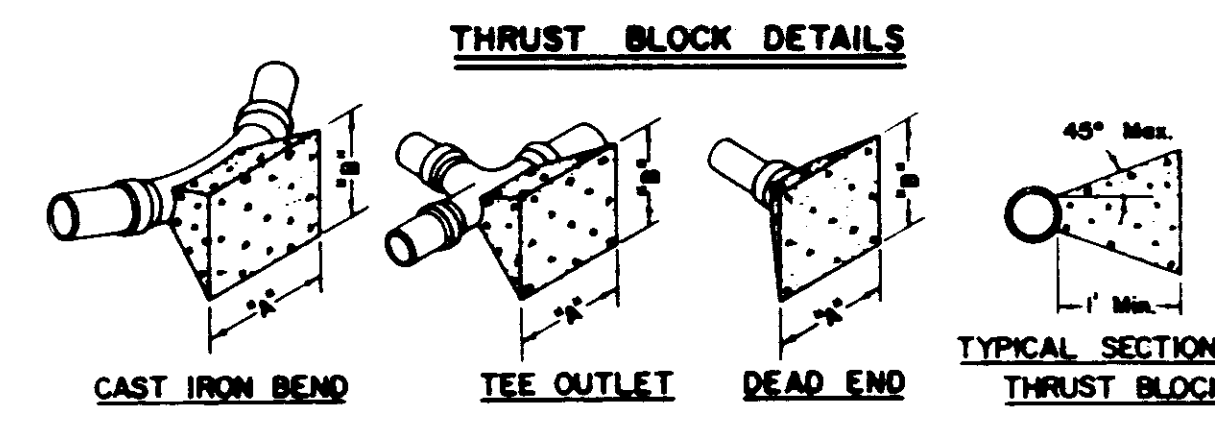
ELEVATION STORM SEWER MANHOLE



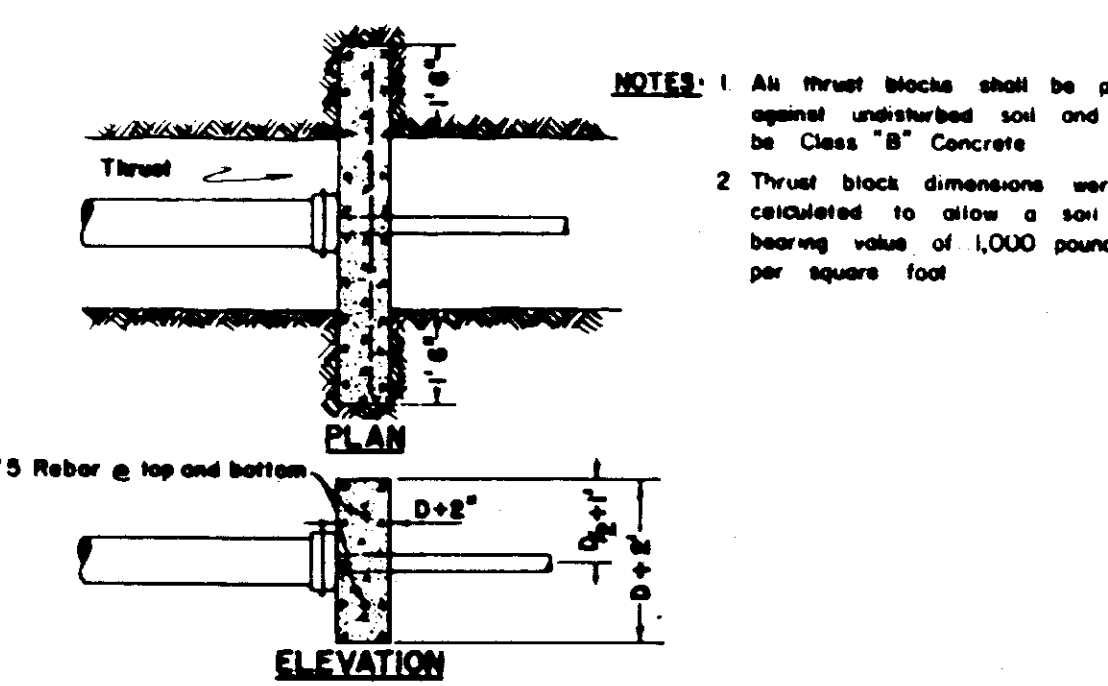
WATER SERVICE



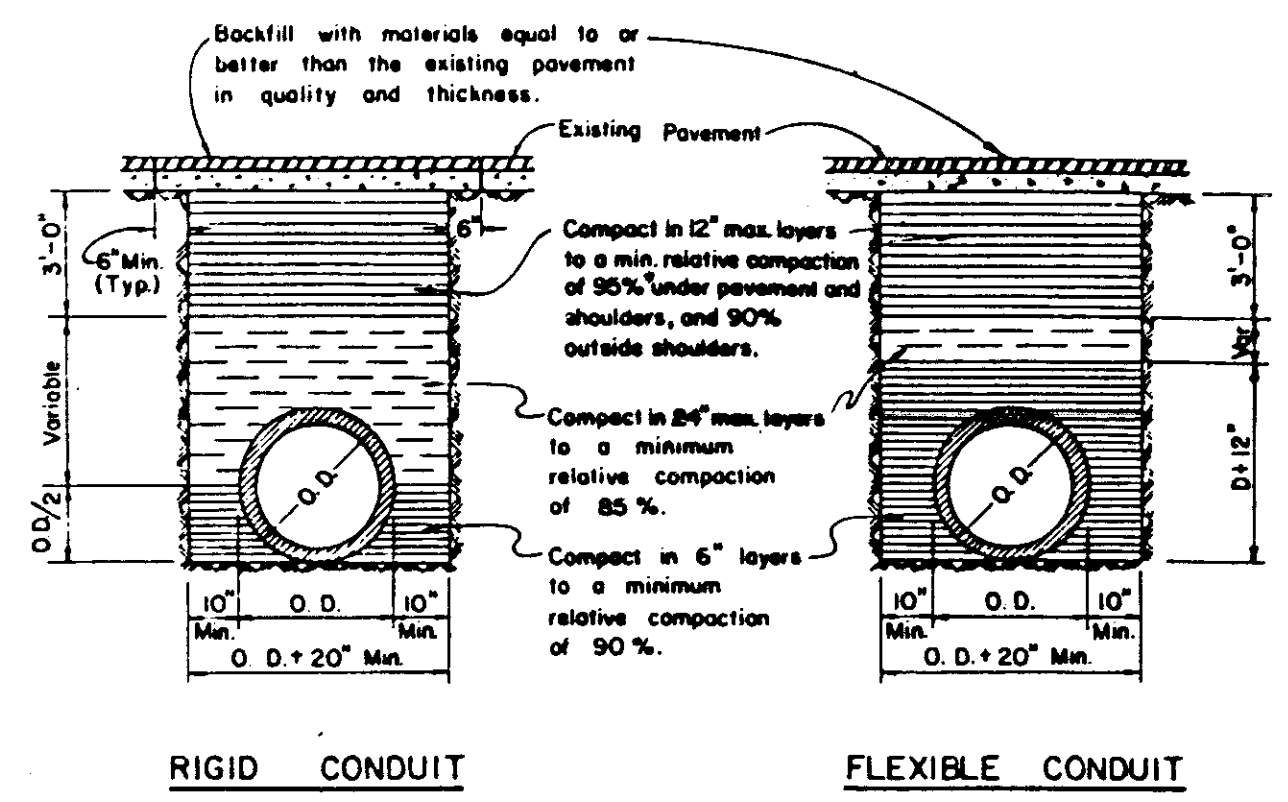
FIRE HYDRANT



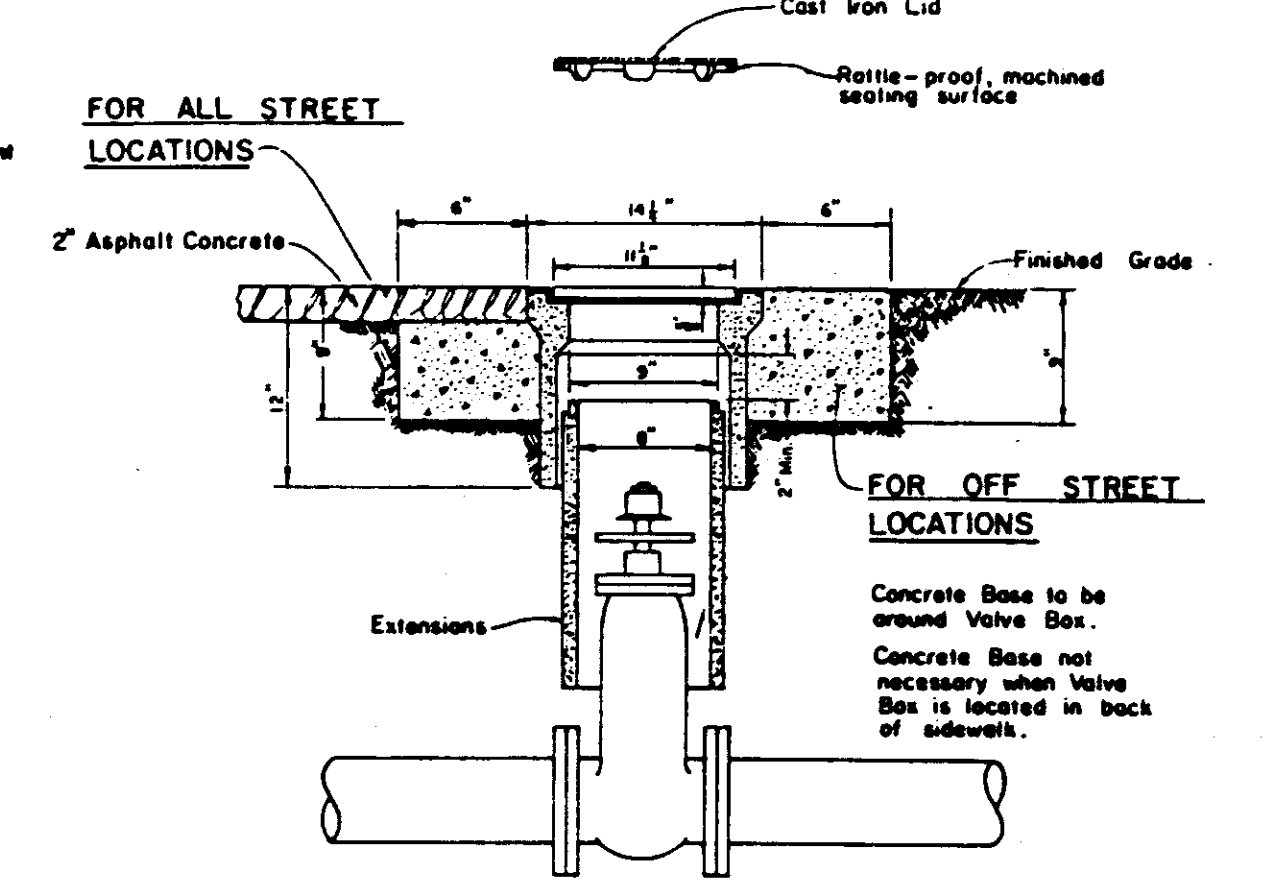
FITTINGS	THRUST BLOCK DIMENSIONS		FITTINGS	A	B
	A	B			
6" LINE and 4" On-site LINE			10" LINE		
22 1/2"	3'-0"	2'-0"	22 1/2"	3'-0"	2'-0"
45"	3'-0"	2'-0"	45"	4'-6"	4'-0"
90"	3'-0"	2'-0"	90"	5'-6"	4'-0"
TEE OUTLET	3'-0"	2'-0"	TEE OUTLET	4'-0"	4'-0"
DEAD END	3'-0"	2'-0"	DEAD END	4'-0"	4'-0"
8" LINE			12" LINE		
22 1/2"	2'-0"	2'-0"	22 1/2"	3'-0"	3'-0"
45"	3'-0"	2'-0"	45"	4'-6"	4'-0"
90"	4'-0"	3'-6"	90"	6'-0"	4'-0"
TEE OUTLET	3'-6"	3'-0"	TEE OUTLET	5'-6"	4'-0"
DEAD END	3'-6"	3'-0"	DEAD END	5'-6"	4'-0"



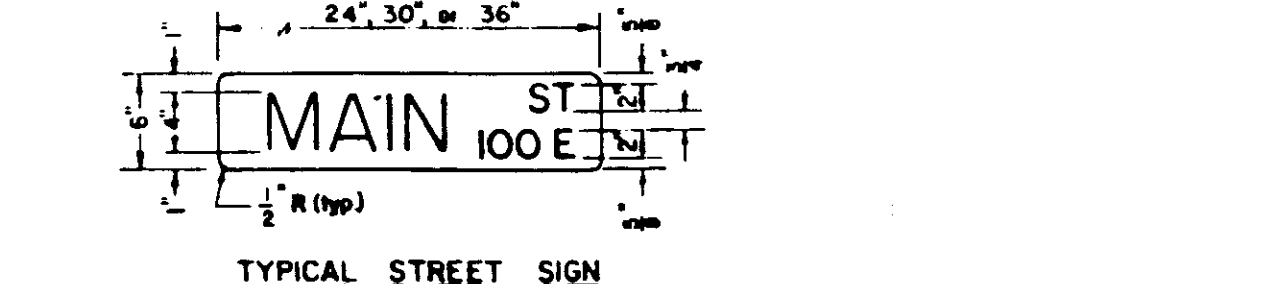
PERMANENT BLOW-OFF



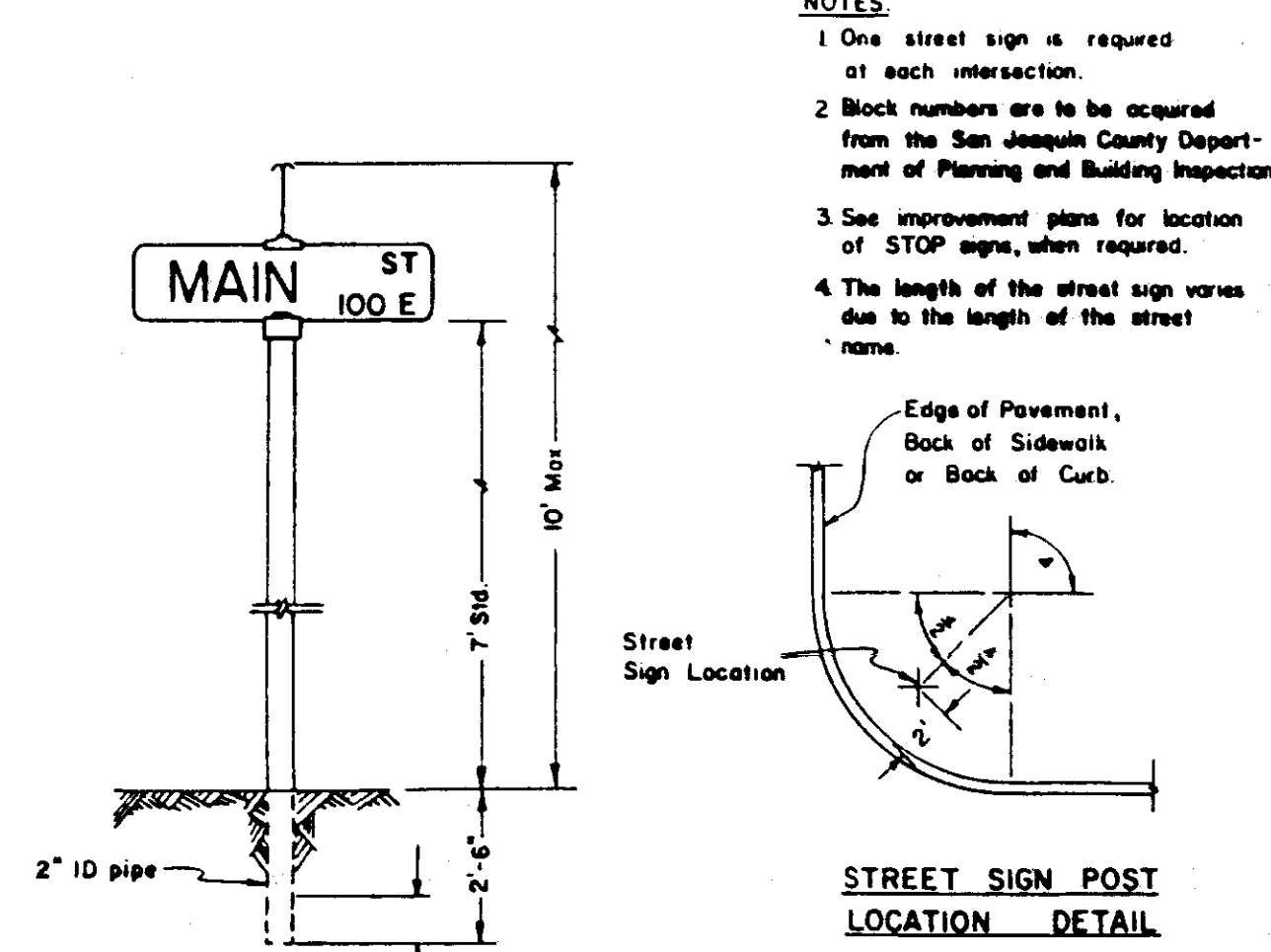
TYPICAL TRENCH DETAIL



VALVE BOX



TYPICAL STREET SIGN



STANDARD STREET SIGN DETAILS

NOTES:
1. Construct expansion joints @ 200' maximum and at returns, around light poles, hydrants and other fixed objects at sidewalk.
2. Transverse weakened plane joints shall be spaced @ 12' maximum intervals.

NOTES:
1. 6" Ramp for 4 1/2" curb height and 2% sidewalk slope. For 6" curb height either use 6" ramp or transition curb height to 4 1/2" from expansion joint to beginning of ramp.
2. Catch basins and other obstructions are not to be located within the wheelchair path area.
3. See Standard B-4, B-5, or B-6 for Curb, Gutter & Sidewalk Details; and State Standard Plan NB-8 for other details.

NOTES:
1. Irving type grate may be used as alternate.
2. Grate shall be fastened to frame with 18" x 2" heat-treated chain.

NOTES:
1. Plastic pipe up to 1/2" I.D. service shall be ultra high molecular weight (UHMW) Polyethylene as manufactured by "Discopipe", "Orangeburg" or approved equal with minimum pressure rating of 160 psi.
2. Plastic pipe for 2" I.D. service shall be PB 2110 Polybutylene or approved equal with minimum pressure rating of 160 psi.
3. Corporation stop shall have corporation cock threads.
4. Angle stop shall have swivel nut and lock wings.
5. Angle stop shall be vertically plumbed.
6. Size of service line shall be as required by the County.
7. Mueller loose-tite connection shall conform to ASTM Designation D 2238.

NOTES:
1. Relative compaction of materials shall be tested by the State of California, Dept. of Transportation Testing Manual, test method No California 216 or 231.
2. All existing pavement shall be neatly cut to line prior to trench excavation.
3. Jetting or raking will be permitted within the street Right of Way with 3 year bond.
4. When shown by soil composition and compatibility, ninety percent (90%) compaction may be used, when approved by the Director of Public Works.

MONOLITHIC CURB GUTTER & SIDEWALK COMMERCIAL & INDUSTRIAL STREETS

STANDARD STORM DRAIN INLET

ELEVATION STORM SEWER MANHOLE

PERMANENT BLOW-OFF THRUST BLOCK DETAILS

TYPICAL STREET SIGN INSTALLATION STANDARD STREET SIGN DETAILS

NO	DATE	REVISIONS	BY	DESIGN	DRAWN BY

APPROVED _____ 19_____
SAN JOAQUIN COUNTY DIRECTOR OF PUBLIC WORKS

BAUMBACH & PIAZZA
CIVIL ENGINEERS - SURVEYORS
323 W. ELM ST., LODI, CALIF. 95240 PH. 209-368-6618

Prepared For:
OAKWOOD GROUP
301 W. LOCUST STREET
LODI, CALIF. 95240

DETAIL SHEET
MAIN STREET (LO. SACRAMENTO RD.)
INDIANA STREET
STREET IMPROVEMENTS

SHEET 6 OF 7
JOB NO. 8724
FILE NO. G-830

50
1955

45

43

45

43

43

44

44

44

44

44

45

44

44

44

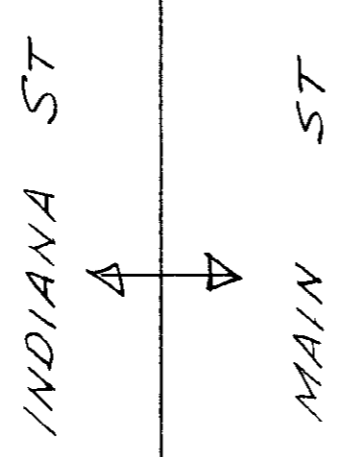
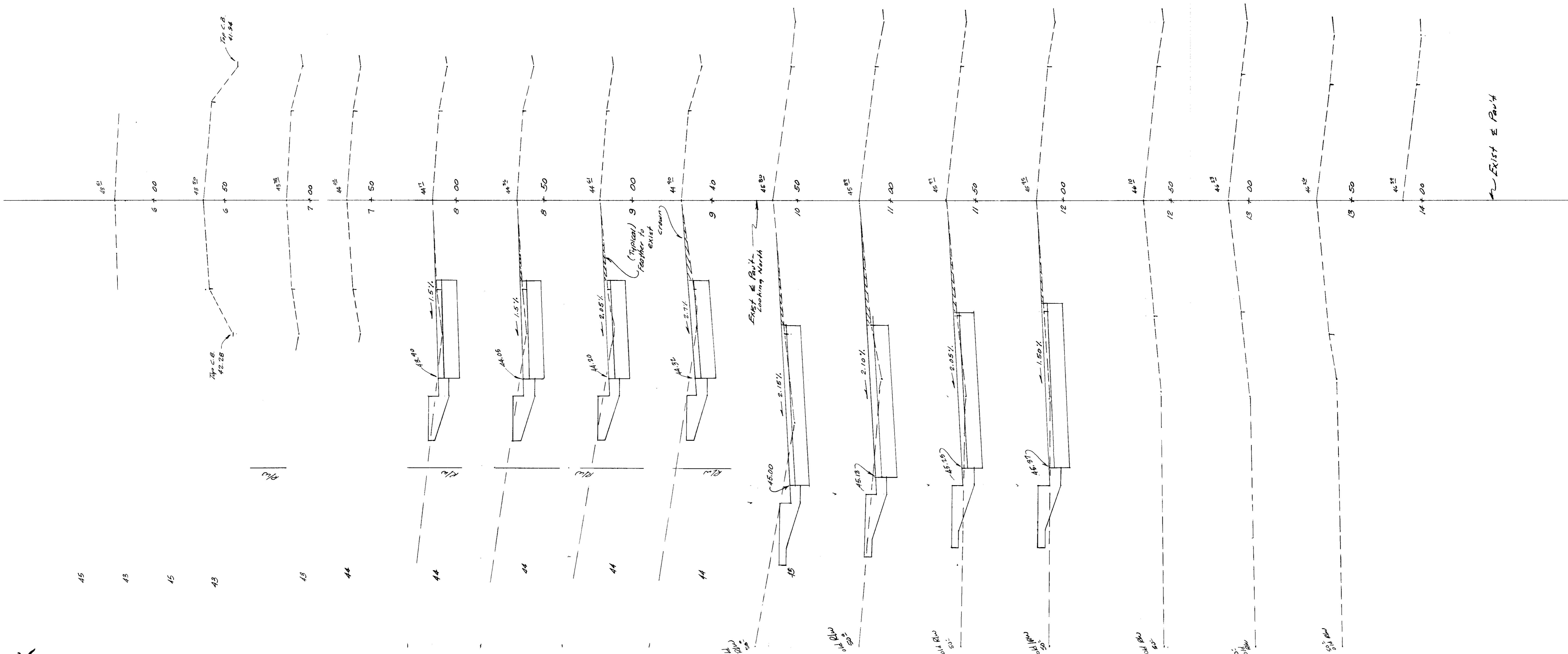
44

44

44

44

44



EXIST E PAULT

MAIN ST

8724
 Matt McCarty
 Main St & Indiana St
 Woodbridge



PREPARED IN THE OFFICE OF
BAUMBACH & PIAZZA
 CIVIL ENGINEERS
 323 WEST ELM STREET
 SUGAR HILL, CALIFORNIA
Alba Baumbach No. 12685

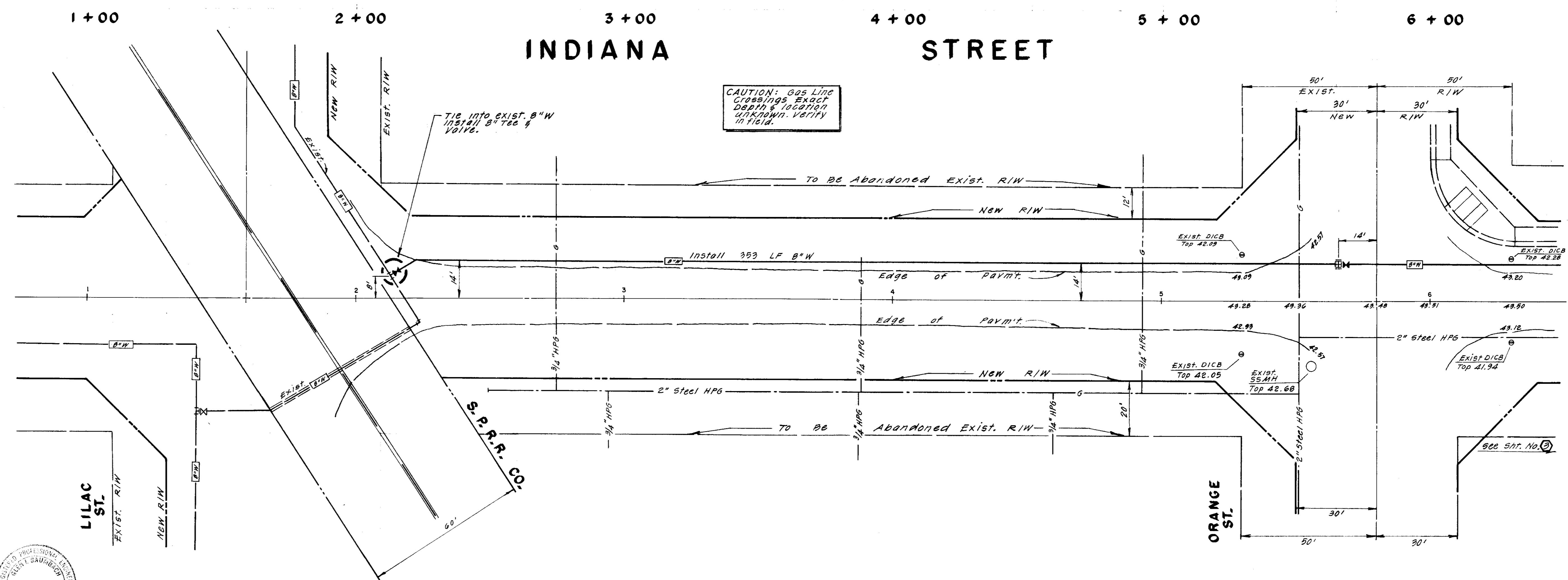
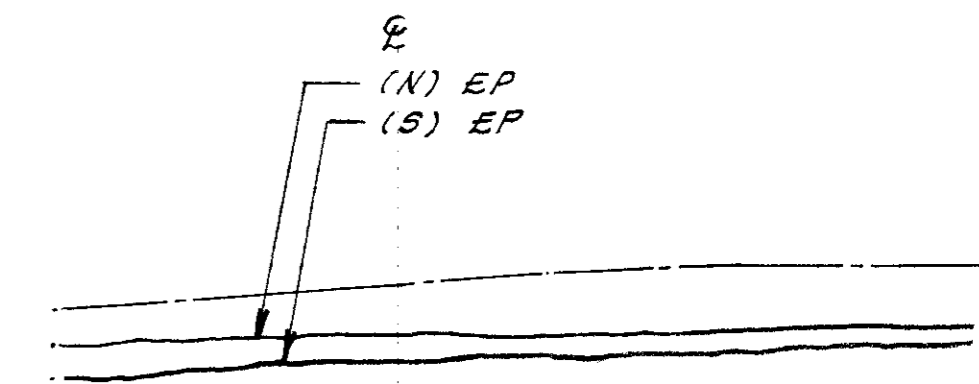
**MAIN STREET (LO. SAC. RD.)
 INDIANA STREET
 STREET PROFILES**

8724
 SHEET **(5)** OF 7
G-830

45
44
43
42
41
40
39
38
37

45
44
43
42
41
40
39
38
37

Scale: H.C. 1" = 20' Vert. 1" = 1'



CAUTION: Gas Line Crossings Exact Depth & Location Unknown. Verify in Field.

Tie into exist. 8" W Install 8" Tee & Valve.

To Be Abandoned Exist. R/W

New R/W

Install 353 LF 8" W

Edge of Pavmt.

Edge of Pavmt.

New R/W

To Be Abandoned Exist. R/W



SU-1956

NO.	DATE	REVISIONS	BY	DESIGN	DRAWN BY
				Alan J. Baumbach	JM
				Submitted by	
				R.C.E. 12685	DATE 3/14/07

APPROVED BY: _____, 19____
SAN JOAQUIN COUNTY DIRECTOR OF PUBLIC WORKS

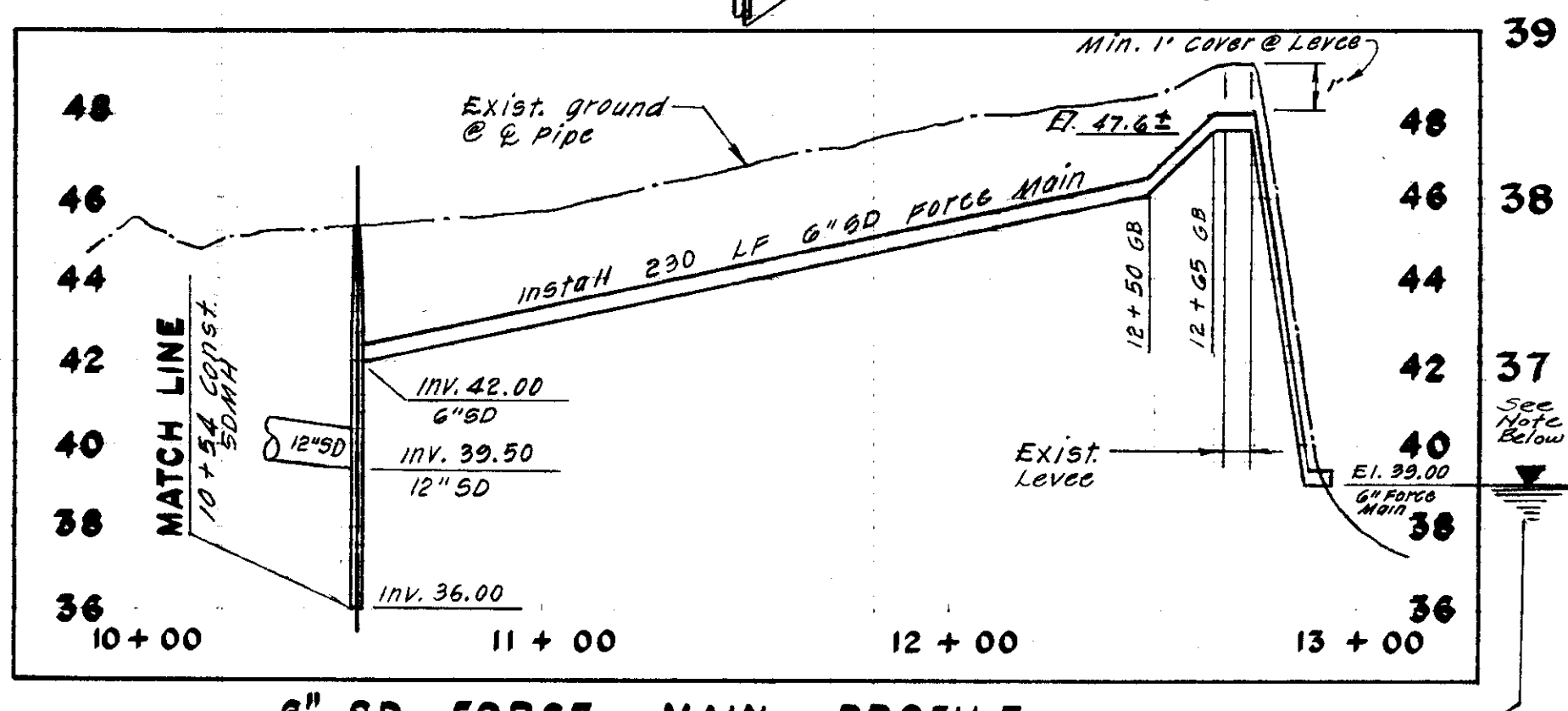
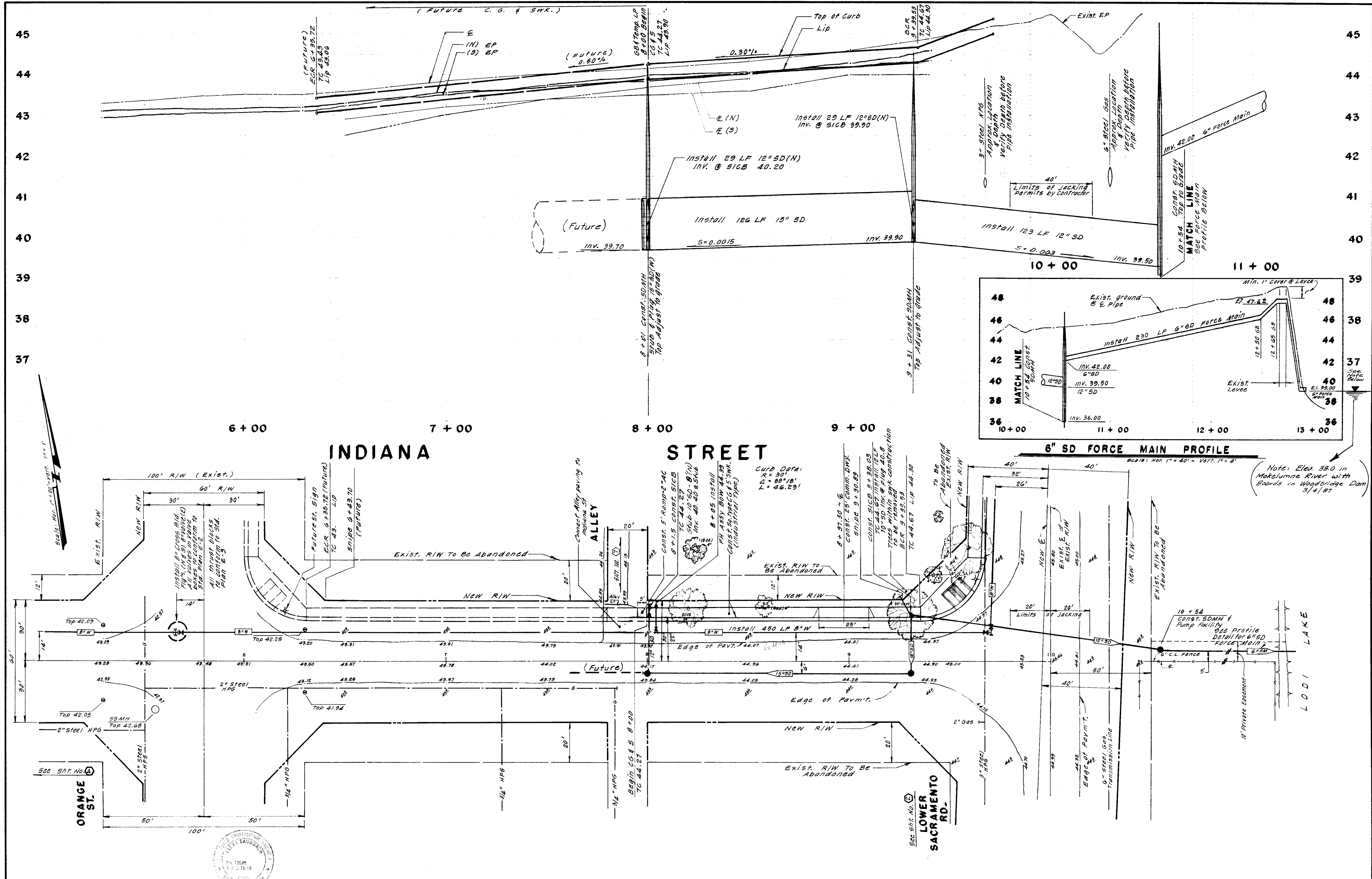
BAUMBACH & PIAZZA
CIVIL ENGINEERS - SURVEYORS
323 W. ELM ST., LODI, CALIF. 95240 PH. 209-368-6618

Prepared For:
OAKWOOD GROUP
301 W. LOCUST STREET
LODI PH: 369-8400

INDIANA STREET
STREET IMPROVEMENTS
LILAC STREET TO ORANGE STREET

SHEET 4 OF 7
JOB NO. 8724
FILE NO. **G-830**

PRINTED ON DIFPO NO. 1000H CLEARPRINT



30-1957

NO.	DATE	REVISIONS	BY

DESIGN: GIB DRAWN BY: JM
 SUBMITTED BY: *Alvin Baumbach*
 R.C.E. 12685 DATE 7/6/87

APPROVED BY: _____, 19____
 SAN JOAQUIN COUNTY DIRECTOR OF PUBLIC WORKS

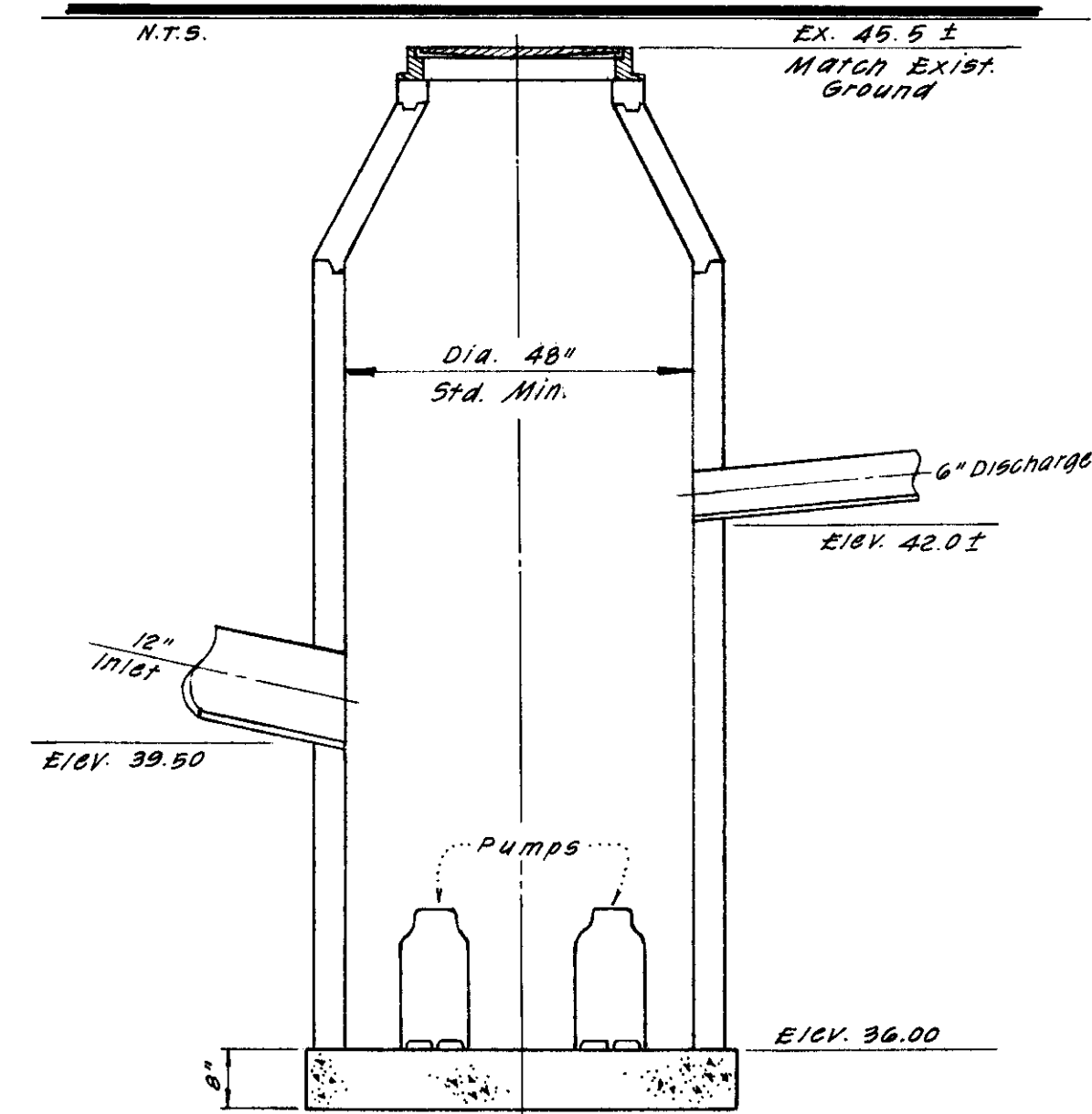
BAUMBACH & PIAZZA
 CIVIL ENGINEERS - SURVEYORS
 323 W. ELM ST., LODI, CALIF. 95240 PH. 209-368-6618

Prepared For:
 OAKWOOD GROUP
 301 W. LOCUST STREET
 LODI PH: 369-8400

INDIANA STREET
 STREET IMPROVEMENTS
 ORANGE STREET TO MAIN STREET (LOWER SAC. RD.)

PRINTED ON DEFO NO. 1000M CLEARPRINT

STORM DRAIN PUMP STATION



STORM DRAIN CALCULATIONS

TOTAL AREA (Including Street) = 0.89 Ac.
 $Q = 0.89 \times 0.90 \times 1.2 = 0.96 \text{ cfs}$
 Use 12" Pipe
 $0.96 \times 7.5 = 7.2 \text{ gal/sec} = 432 \text{ gal/min}$
 Say 450 gal/min - Use 2 Pumps
 Each pump - 225 gal/min design
 PUMP DESIGN: Each Pump 225 gal/min
 Total Head = 15 ft.
 (Min.) R.P.M. = 1150 (Max.) R.P.M. = 1750
 Pumps to be approved by Engineer before installation.

CONTROLS

The control equipment shall be mounted in a NEMA Type 1 steel enclosure with a removable access cover. The circuit breakers, starter reset buttons, and control switches shall be operable without removing the access cover for deadfront operation.

A grounding type convenience outlet shall be provided on the side of the cabinet for operation of 115 volt AC devices.

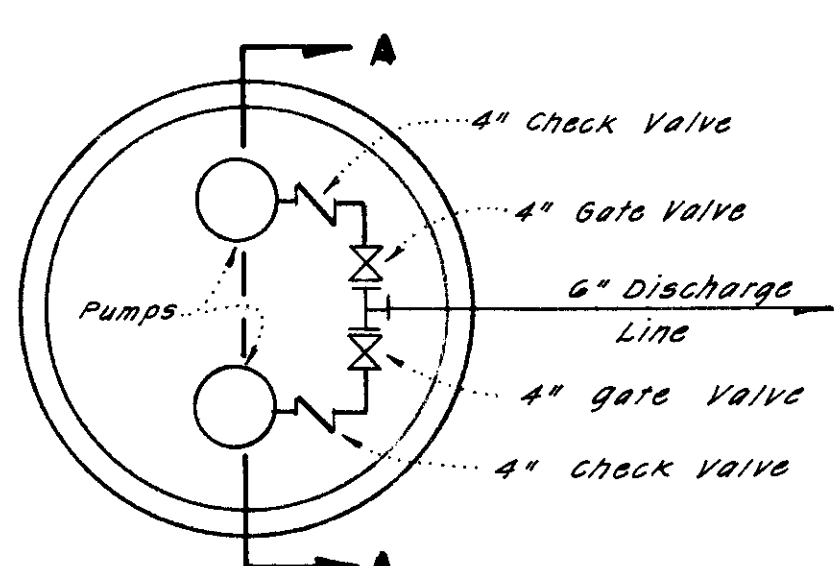
Thermal magnetic air circuit breakers shall be provided for branch disconnect service and short circuit protection of all motor control and auxiliary circuits.

Magnetic across-the-line starters with under-voltage release and overload coils for each phase shall be provided for each pump motor to give positive protection. Each single phase auxiliary motor shall be equipped with an over-current protection device in addition to the branch circuit breaker, or shall be impedance protected. All switches shall be labeled and a coded wiring diagram shall be provided.

To control the operation of the pumps with variations of liquid level in the wet well, a minimum of three (3) mercury replacement switches shall be provided. A minimum of 30' of cord shall be provided with each switch to eliminate the hazards created by splicing. The cord shall have a corrosion resistant vinyl jacket and be multi-stranded in order to prevent fatigue.

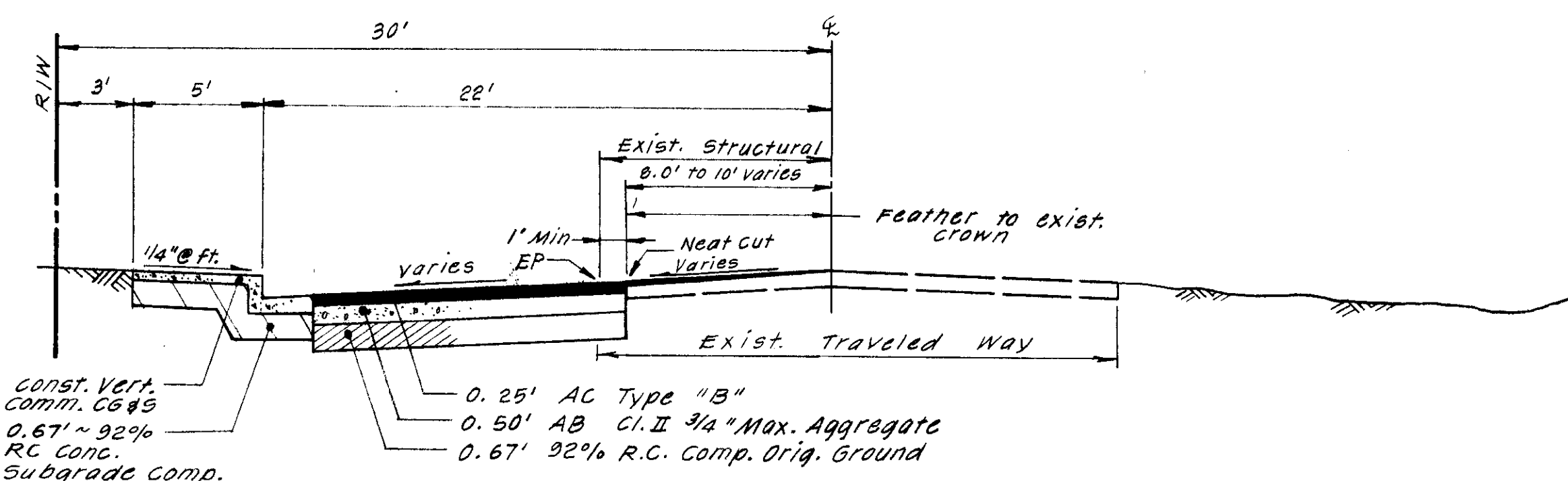
An automatic alternator with manual switch shall be provided to change the sequence of operation of the pumps every eight hours. The manual switch shall allow for either pump to be selected as base pump or for automatic alternation.

Provisions shall also be made for the pumps to operate in parallel should the level in the wet well continue to rise above the starting level for the low level pump.



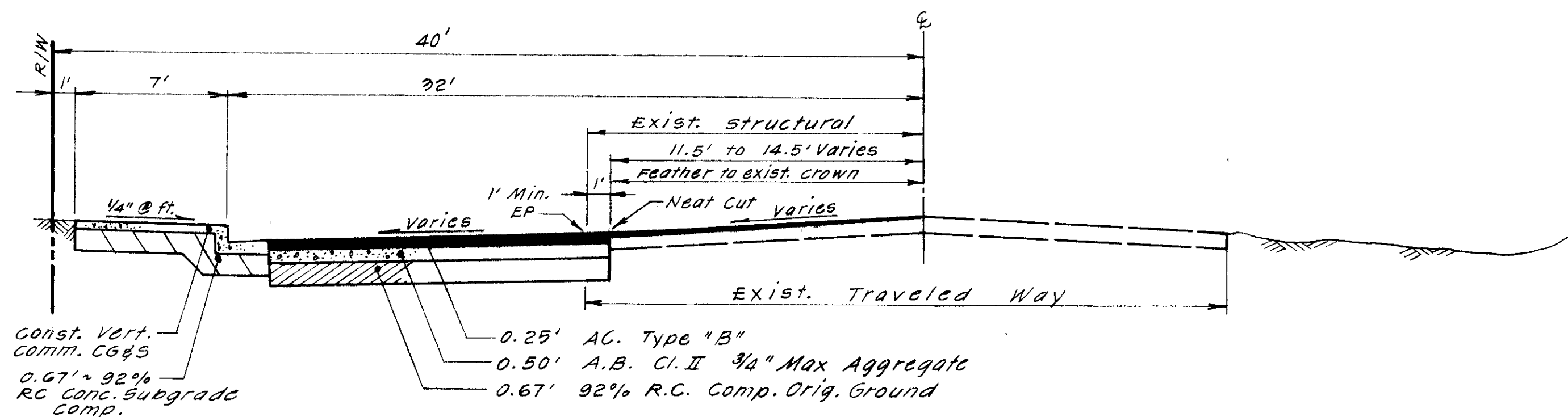
STRUCTURAL SECTIONS

Scale: 1" = 5' Hor - Vert. N.T.S.



INDIANA STREET

T.I. = 5.0



MAIN STREET (LOWER SACRAMENTO RD.)

T.I. = 6.0



APPROVED BY

[Signature]
 CHIEF, WOODBRIDGE FIRE DISTRICT
 DATE

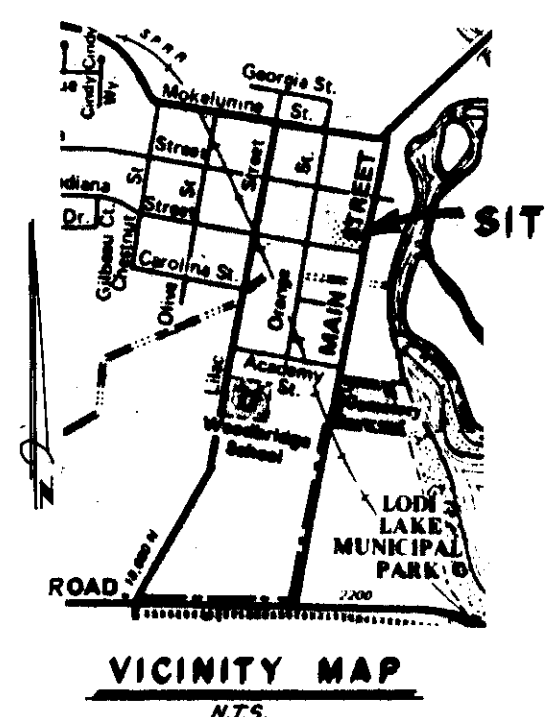
GENERAL NOTES

- Baumbach & Piazza (Engineer) shall set all survey controls and construction stakes necessary for completion of work. The Contractor shall be responsible for the preservation of all survey and construction stakes. Survey and construction stakes that are lost or destroyed due to Contractor's negligence will be set by the Engineer at the Contractor's expense.
- The existing underground utilities were plotted from available records. The Contractor shall be responsible for contacting all utility agencies to mark their facilities in the field before any excavation. The Contractor shall notify and co-ordinate all work with any agency requiring removal or relocation of their utilities. Pacific Bell, P. G. & E., Lodi Cable T. V., Woodbridge Sanitary District and Woodbridge Lighting District, USA (800) 642-2444.
- Contractor shall be responsible for notifying and co-ordinating all work with any agency requiring removal or relocation of utilities, such as Pacific Bell, P. G. & E., etc.
- All underground utilities within the street area, including gas and telephone line, shall be installed prior to paving.
- All manholes to be set flush with finish grade unless otherwise indicated.
- All water lines shall have a minimum cover of 30".
- All existing irrigation lines within the right of way shall be crushed in place or removed.
- Water used in any phase of construction, such as backfill compaction, dust control, testing or other work herein required, shall be included in the unit price or lump sum bid for the respective items of construction.
- Contractor agrees that he shall assume sole and complete responsibility for job site conditions during the course of construction of this project, including safety for all persons and property; that this requirement shall apply continuously and not be limited to normal working hours and that Contractor shall defend, indemnify, and hold the Owner and the Engineer harmless from any and all liability, real or alleged, in connection with the performance of work on this project, excepting for liability arising from the sole negligence of the Owner or the Engineer.
- Contractor shall give Engineer a minimum of 48 hours notification prior to staking any utilities.
- Water services shall be marked by the curb and gutter Contractor with "W" stamped on the top of curb. Sewer services shall be similarly marked with a "S".
- All work will be required to be inspected by the Department of Public Works. They shall be notified not less than 24 hours in advance of commencement of work.
- Lot grading shall be completed before starting any underground construction. Refer to attached grading plan.
- Each SS service to have C.O. at property line.
- Note that sanitary inspection will be performed by San Joaquin County Department of Public Works and Woodbridge Sanitary District Engineer and/or District Staff (Kjeldsen-Sinnock and Associates (209) 946-0268). Must have inspection before backfill and notify inspector 48 hours prior.
- Separation of water and sewer mains (including crossings) and sewer laterals crossing over water mains shall meet or exceed the latest standards of the State of California Department of Health Services. Where water crosses SD or SS use an 18 - 20 ft. length of Cl. 200 pipe, centered over the SS or SD if: a) The water is under the SS or SD. b) The vertical clearance is less than 1 ft.
- It is agreed that field conditions may require changes to these plans. It is further agreed that the Director of Public Works may require changes, alterations or additions to these plans, when the Director deems them to be necessary or desirable for the proper completion of the work, provided that such changes, alterations or additions shall not exceed 10% of the original estimate of the cost for the improvements without prior approval of the surety.
- Fire hydrant bid shall include the following: Tee, 6" Lateral, 6" Valve and complete fire hydrant assembly.
- Contractor to provide compaction tests and be solely responsible for safety conditions.
- Testing, sterilization, and installation shall conform to the applicable Standards of the Department of Public Works and the Local Health District.
- Jetting will not be allowed except by special arrangement with the Department of Public Works. All costs associated with jetting, if allowed, shall be borne by the Contractor.
- When cutting through public streets, make neat cut. Match existing structural section (3" A.C. - 8" A.B. minimum). Maintain one way traffic at all times and two way at night.
- San Joaquin County Department of Public Works Specifications and Standard Plans are hereby made a part of these plans.
- Fire hydrant shall be a Model 615 Long Beach Iron Works with 2 - 2 1/2" outlets and 1 - 4 1/2" steamer outlet, or equal, approved by the Chief Woodbridge Fire District.

25. Pipe type and strengths allowed for underground utilities, unless otherwise specified on plans, are as follows: Storm Drain (SD) - RCP or ACP, Cl. II; Sanitary Sewer (SS) - PVC, per ASTM D3034, SDR35; Water (W) - PVC, Cl. 150 or greater per RWMA Std. C-100 or RCP, Cl. 150 or greater per ASTM C26, TYPE II.

CONSTRUCTION QUANTITIES

STREET SYSTEM	
Roadway Excavation	650 C.Y.
Compact Original Ground	5,500 S.F.
Aggregate Base, Cl. II (0.50')	5,500 S.F.
Asphalt Concrete, Type "B" (0.25')	5,500 S.F.
Concrete Subgrade Compaction	2,860 S.F.
Square Type Curb, Gutter & Sidewalk (5')	109 L.F.
Square Type Curb, Gutter & Sidewalk (7')	165 L.F.
Commercial Type Driveway & Sidewalk	62 L.F.
Street Sign	1 Each
STORM DRAIN SYSTEM	
15" Storm Drain	126 L.F.
12" Storm Drain (Incl. Jacking)	181 L.F.
10" Storm Drain	12 L.F.
Storm Drain Manhole	3 Each
Side Inlet Catch Basin	2 Each
6" Force Main Pipe	230 L.F.
Storm Drain Pumping System & Controls	Lump Sum
WATER SYSTEM	
8" Water	1,075 L.F.
8" Valves	4 Each
Fire Hydrant # AS6V	1 Each
2" Water Service & Meter Box	1 Each
4" Fire Service	1 Each



BENCHMARK DATUM:
 Per U.S.B.S. B.M. 19-8
 1907-45 Location N.W.
 corner of Masonic Bldg.
 in the town of Woodbridge.
 Elev. 46.40

Note: Quantities for estimating purposes only. Pay quantities will be actual quantities installed.

1959-1

NO.	DATE	REVISIONS	BY	DESIGN <i>GIB</i> DRAWN BY <i>JM</i>	APPROVED BY <i>[Signature]</i> Aug 14 1981	BAUMBACH & PIAZZA CIVIL ENGINEERS SURVEYORS 323 W. ELM ST. LODI, CALIF. 93240 PH: 209-369-6818	Prepared For: OAKWOOD GROUP 301 W. LOCUST STREET LODI PH: 369-8400	MAIN STREET (LO. SACRAMENTO RD.) INDIANA STREET STREET IMPROVEMENTS KEY SHEET	SHEET 1 OF 7
				SUBMITTED BY <i>[Signature]</i> R.C.E. 12685 DATE 7/14/87	SAN JOAQUIN COUNTY DIRECTOR OF PUBLIC WORKS				JOB NO. 8724