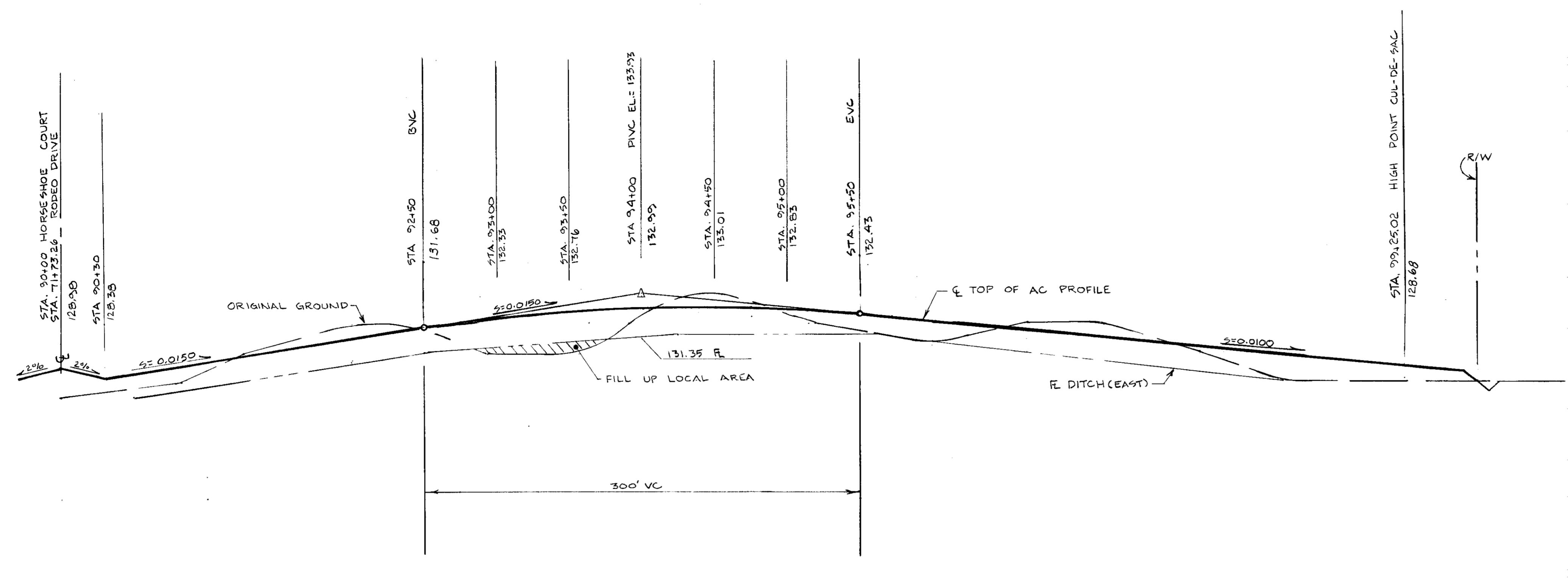


150
145
140
135
130
125
120

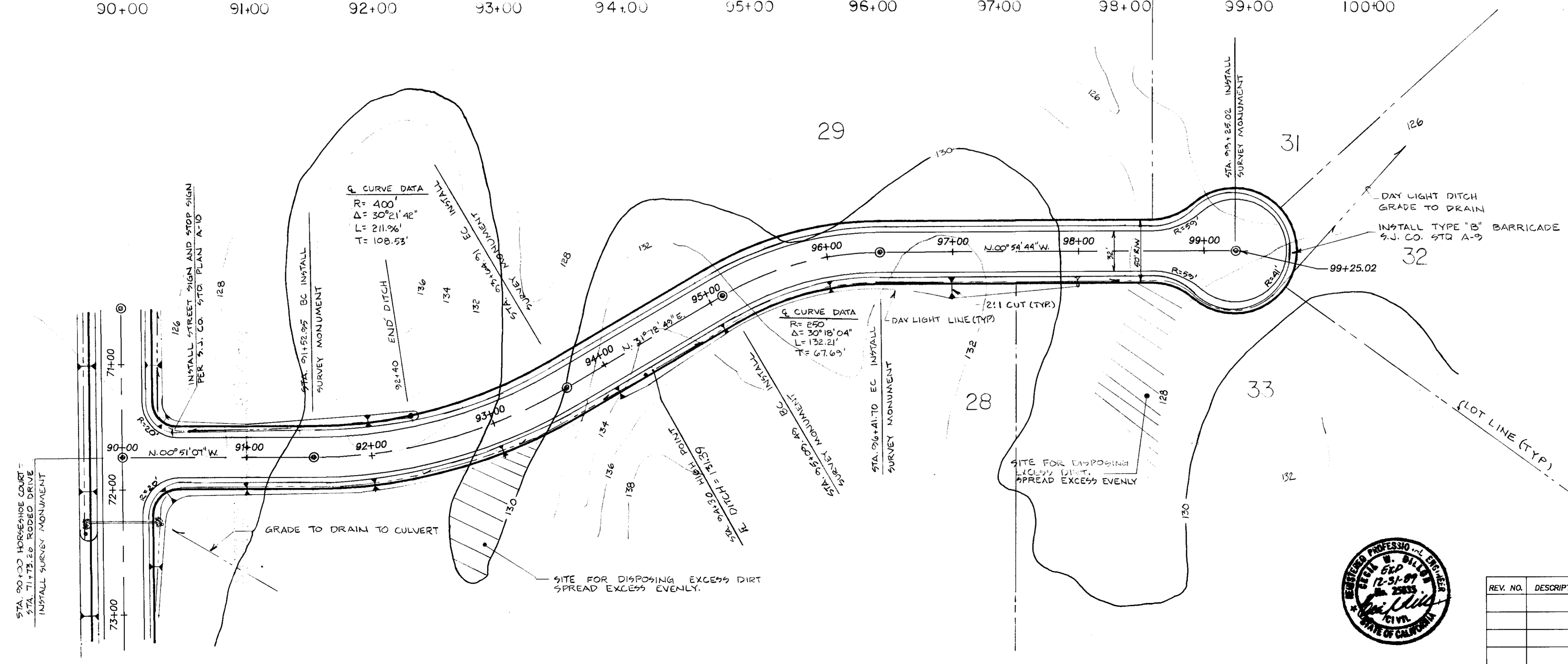
150
145
140
135
130
125
120



HORSESHOE COURT

SCALE: 1"=50' HOR.
1"=5' VER.

90+00 91+00 92+00 93+00 94+00 95+00 96+00 97+00 98+00 99+00 100+00



DILLON ENGINEERING
ENGINEERING PLANNING SURVEYING
8 South Hutchins Street
Lodi, California 95240
(209) 334-6613

**CLEMENTS OAKS SUBDIVISION
IMPROVEMENT PLANS**

**HORSESHOE COURT
PLAN & PROFILE**

DEPARTMENT OF PUBLIC WORKS
SAN JOAQUIN COUNTY, CALIFORNIA

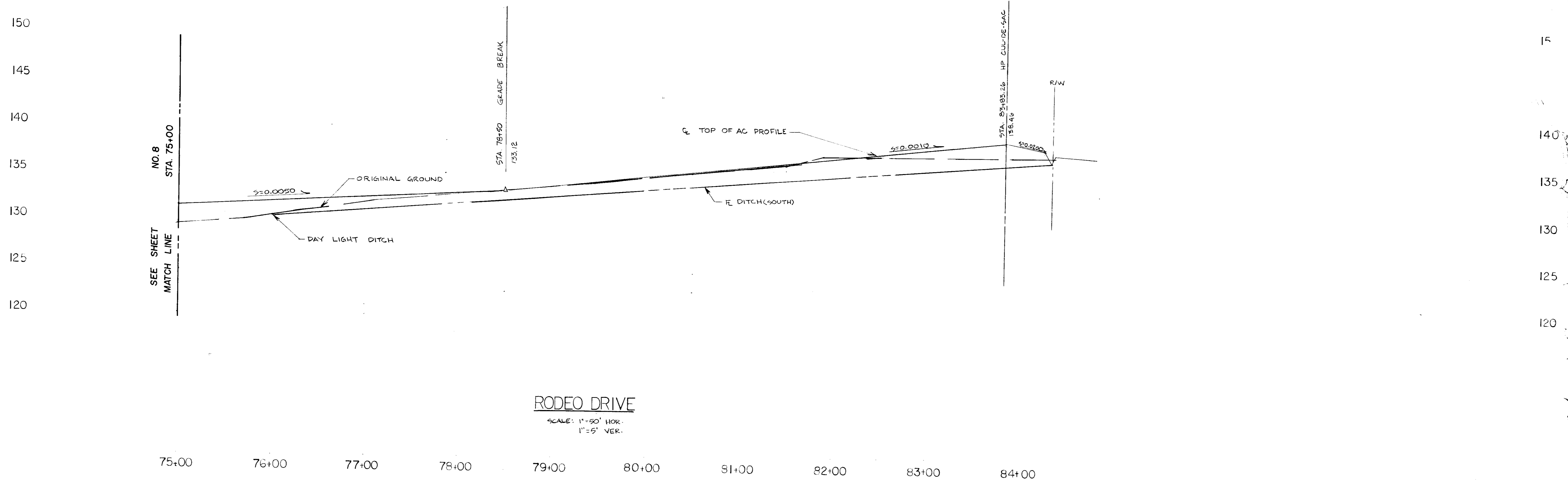


REV. NO.	DESCRIPTION	DATE

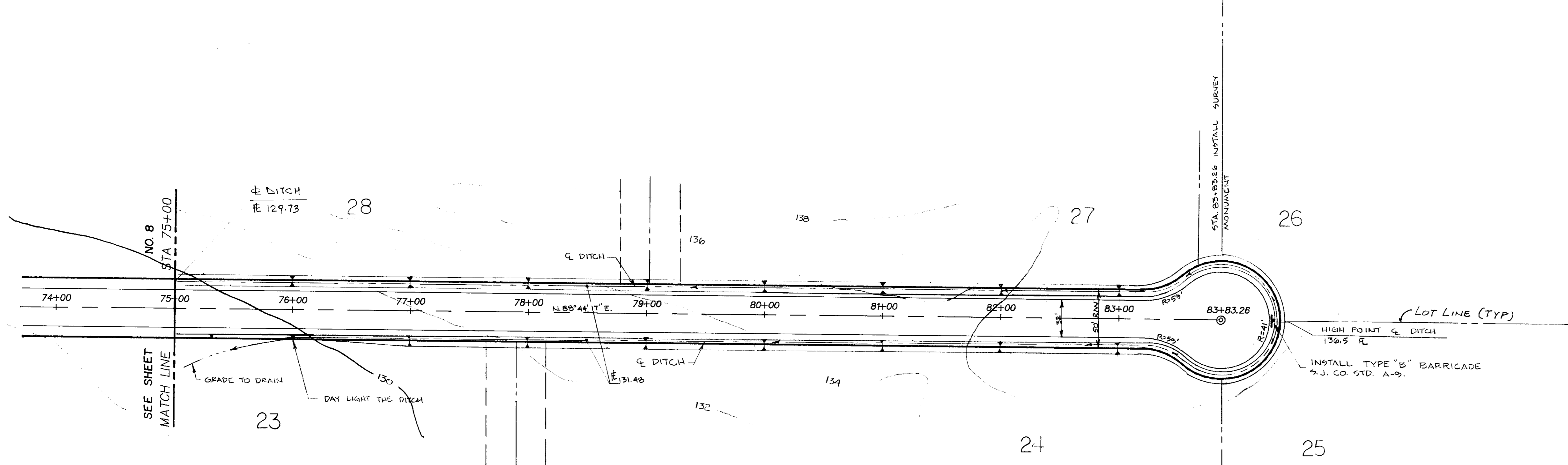
SCALE: H 1"=50'; V 1"=5'	APPROVED BY:	SHEET NO.
DESIGNED BY:	DATE:	10
DRAWN BY:	DIRECTOR OF PUBLIC WORKS	OF 10 SHEETS
CHECKED BY: <i>SLY</i>	SAN JOAQUIN COUNTY, CALIF.	JOB NO.
AS BUILT BY:		8733

SC 1967

SU 1968



RODEO DRIVE
 SCALE: 1"=50' HOR.
 1"=5' VER.



DILLON ENGINEERING
 ENGINEERING PLANNING SURVEYING
 8 South Hutchins Street
 Lodi, California 95240
 (209) 334-6613

**CLEMENTS OAKS SUBDIVISION
 IMPROVEMENT PLANS**

**RODEO DRIVE
 PLAN & PROFILE**

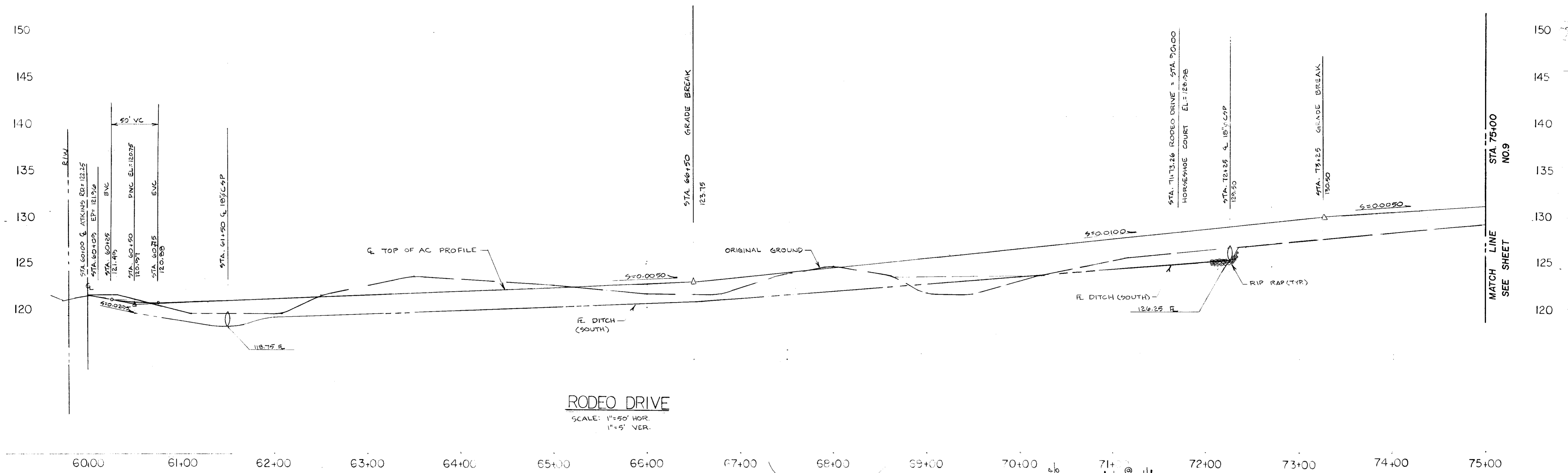
DEPARTMENT OF PUBLIC WORKS
 SAN JOAQUIN COUNTY, CALIFORNIA



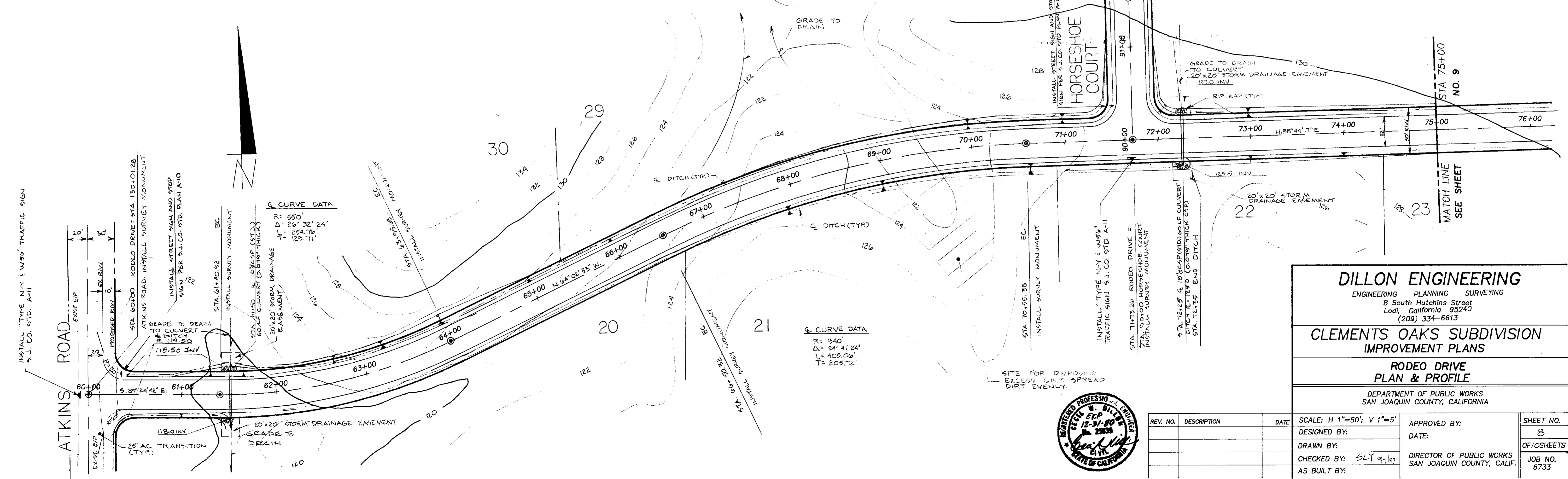
REV. NO.	DESCRIPTION	DATE

SCALE: H 1"=50'; V 1"=5'	APPROVED BY:	SHEET NO. 9
DESIGNED BY:	DATE:	
DRAWN BY:	DIRECTOR OF PUBLIC WORKS	OF 10 SHEETS
CHECKED BY: SLY	SAN JOAQUIN COUNTY, CALIF.	JOB NO. 8733
AS BUILT BY:		

50 1969



RODEO DRIVE
SCALE: 1"=50' HOR.
1"=5' VER.



Q CURVE DATA
R = 940'
Δ = 24° 41' 24"
L = 405.06'
T = 205.72'

Q CURVE DATA
R = 550'
Δ = 26° 32' 24"
L = 254.76'
T = 139.71'

DILLON ENGINEERING
ENGINEERING PLANNING SURVEYING
8 South Hutchins Street
Lodi, California 95240
(209) 334-6613

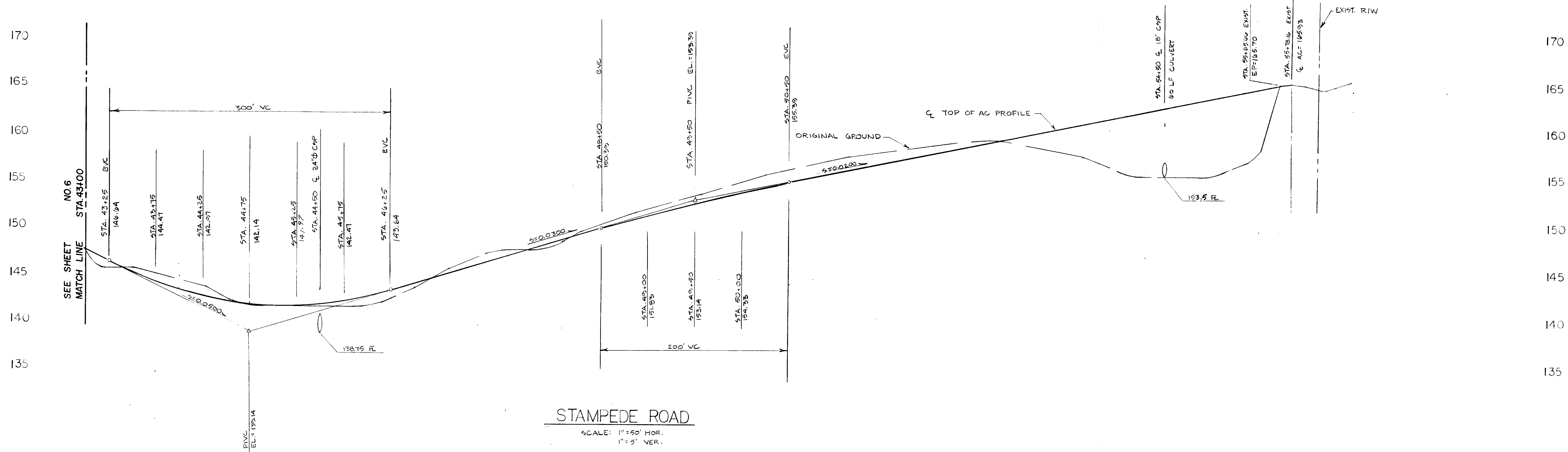
**CLEMENTS OAKS SUBDIVISION
IMPROVEMENT PLANS**

**RODEO DRIVE
PLAN & PROFILE**

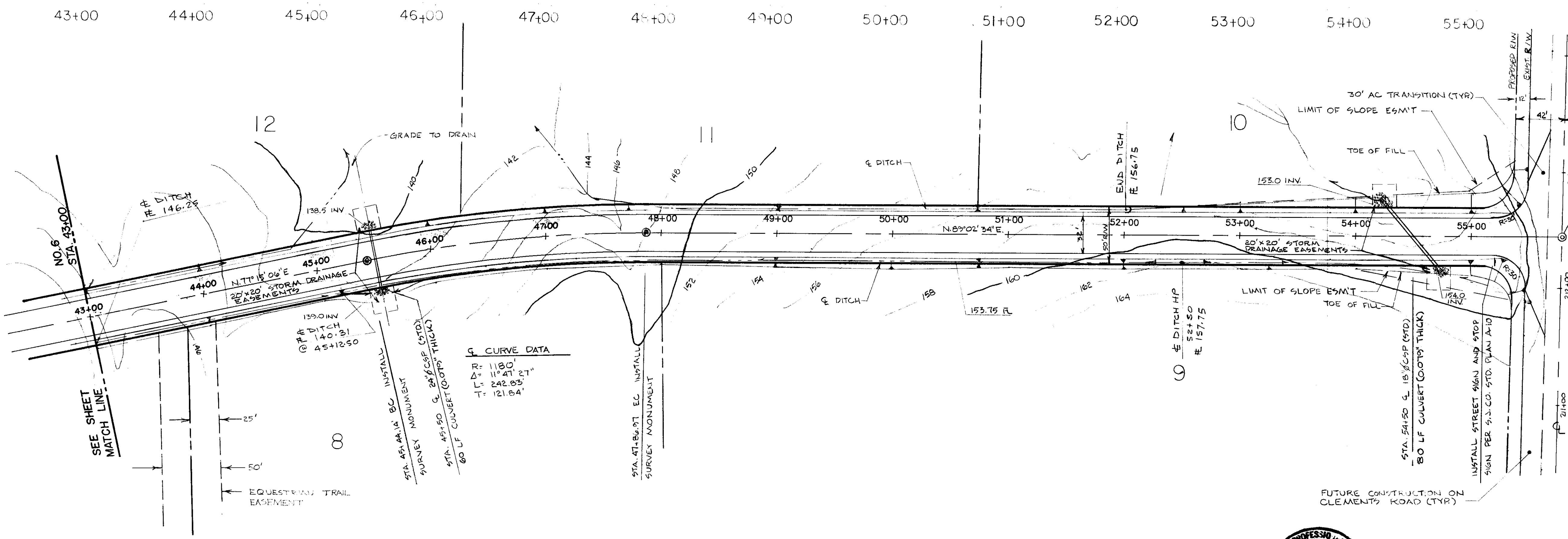
DEPARTMENT OF PUBLIC WORKS
SAN JOAQUIN COUNTY, CALIFORNIA



REV. NO.	DESCRIPTION	DATE	SCALE: H 1"=50'; V 1"=5'	APPROVED BY:	SHEET NO.
	DESIGNED BY:				8
	DRAWN BY:				OF 8 SHEETS
	CHECKED BY: SLY			DIRECTOR OF PUBLIC WORKS SAN JOAQUIN COUNTY, CALIF.	JOB NO. 8733
	AS BUILT BY:				



STAMPEDE ROAD
 SCALE: 1"=50' HOR.
 1"=5' VER.



CURVE DATA
 R= 1180'
 D= 11°21'0"
 L= 242.83'
 T= 121.84'

DILLON ENGINEERING
 ENGINEERING PLANNING SURVEYING
 8 South Hutchins Street
 Lodi, California 95240
 (209) 334-6613

**CLEMENTS OAKS SUBDIVISION
 IMPROVEMENT PLANS**

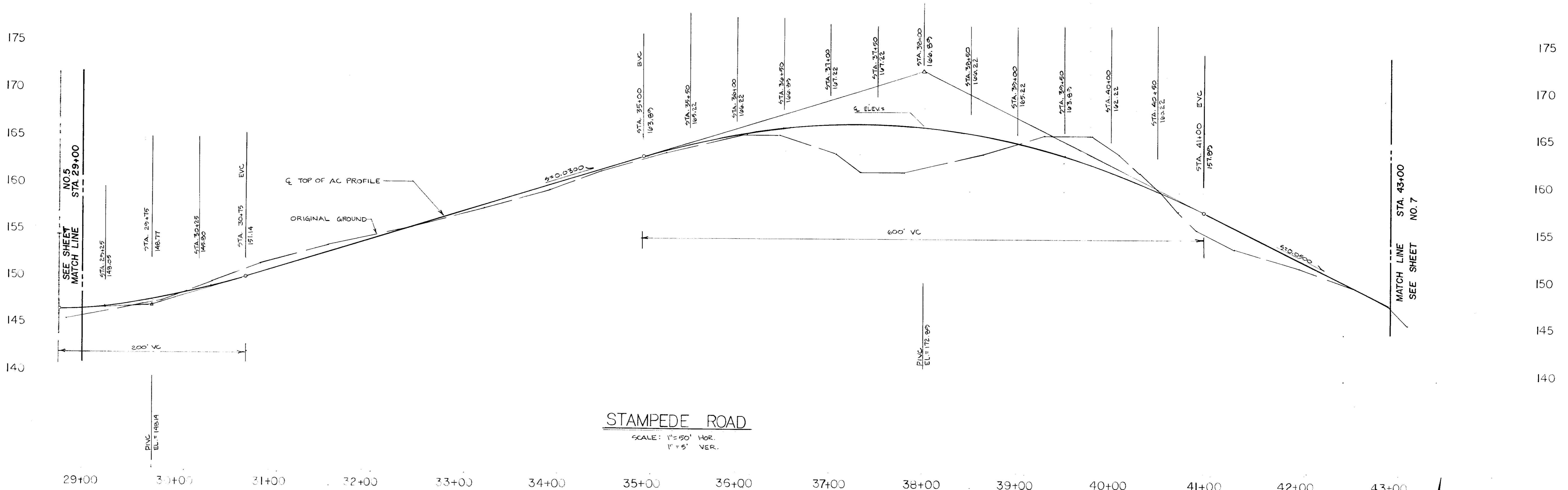
**STAMPEDE ROAD
 PLAN & PROFILE**

DEPARTMENT OF PUBLIC WORKS
 SAN JOAQUIN COUNTY, CALIFORNIA

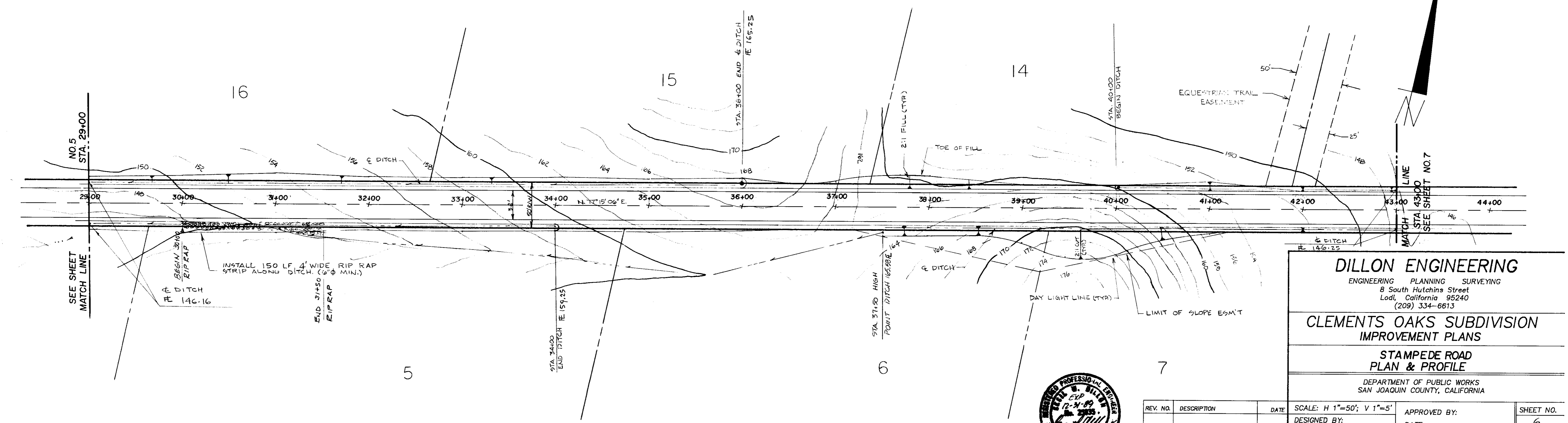


REV. NO.	DESCRIPTION	DATE	SCALE: H 1"=50'; V 1"=5'	APPROVED BY:	SHEET NO.
	DESIGNED BY:				7
	DRAWN BY:				OF 10 SHEETS
	CHECKED BY: SLY	11/18/77		DIRECTOR OF PUBLIC WORKS SAN JOAQUIN COUNTY, CALIF.	JOB NO. 8733
	AS BUILT BY:				

SU 1970



STAMPEDE ROAD
 SCALE: 1" = 50' HOR.
 1" = 5' VER.



DILLON ENGINEERING
 ENGINEERING PLANNING SURVEYING
 8 South Hutchins Street
 Lodi, California 95240
 (209) 334-6613

**CLEMENTS OAKS SUBDIVISION
 IMPROVEMENT PLANS**

**STAMPEDE ROAD
 PLAN & PROFILE**

DEPARTMENT OF PUBLIC WORKS
 SAN JOAQUIN COUNTY, CALIFORNIA

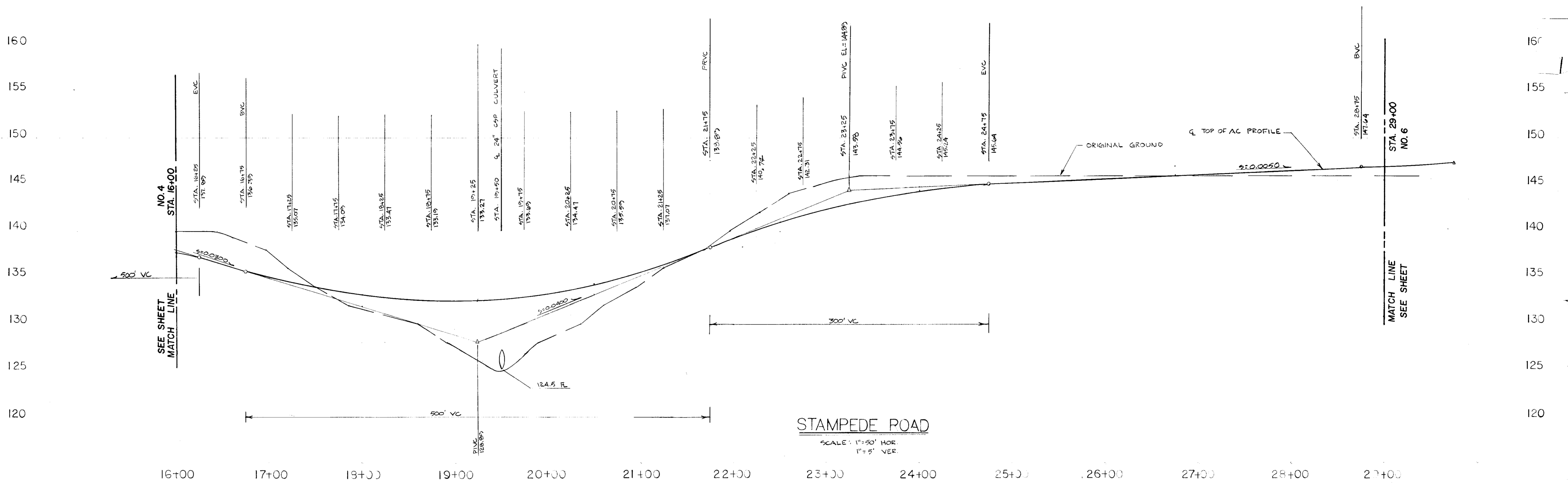


REV. NO.	DESCRIPTION	DATE

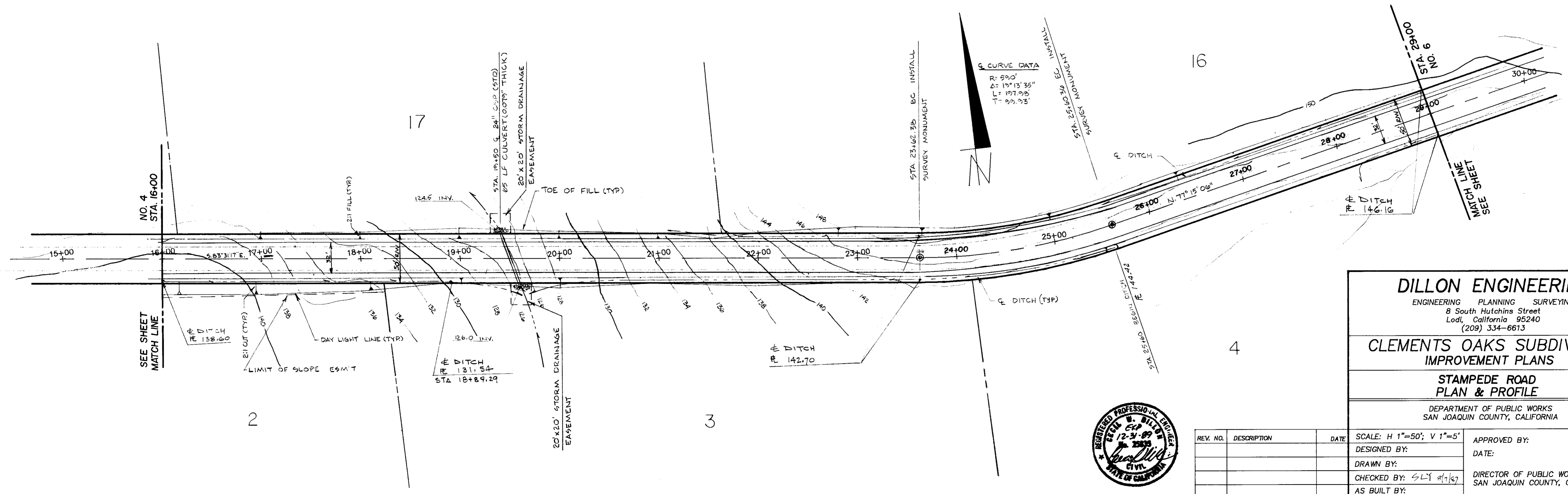
SCALE: H 1"=50'; V 1"=5'	APPROVED BY:	SHEET NO.
DESIGNED BY:	DATE:	6
DRAWN BY:	DIRECTOR OF PUBLIC WORKS	OF 10 SHEETS
CHECKED BY: SLJ	SAN JOAQUIN COUNTY, CALIF.	JOB NO. 8733
AS BUILT BY:		

SU 1971

SU 1972



STAMPEDE ROAD
SCALE: 1"=50' HOR
1"=5' VER

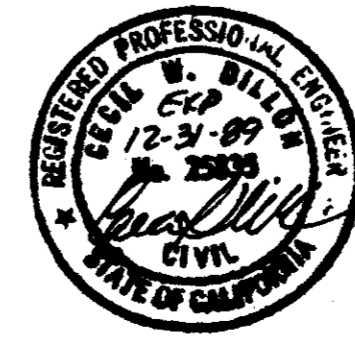


DILLON ENGINEERING
ENGINEERING PLANNING SURVEYING
8 South Hutchins Street
Lodi, California 95240
(209) 334-6613

**CLEMENTS OAKS SUBDIVISION
IMPROVEMENT PLANS**

**STAMPEDE ROAD
PLAN & PROFILE**

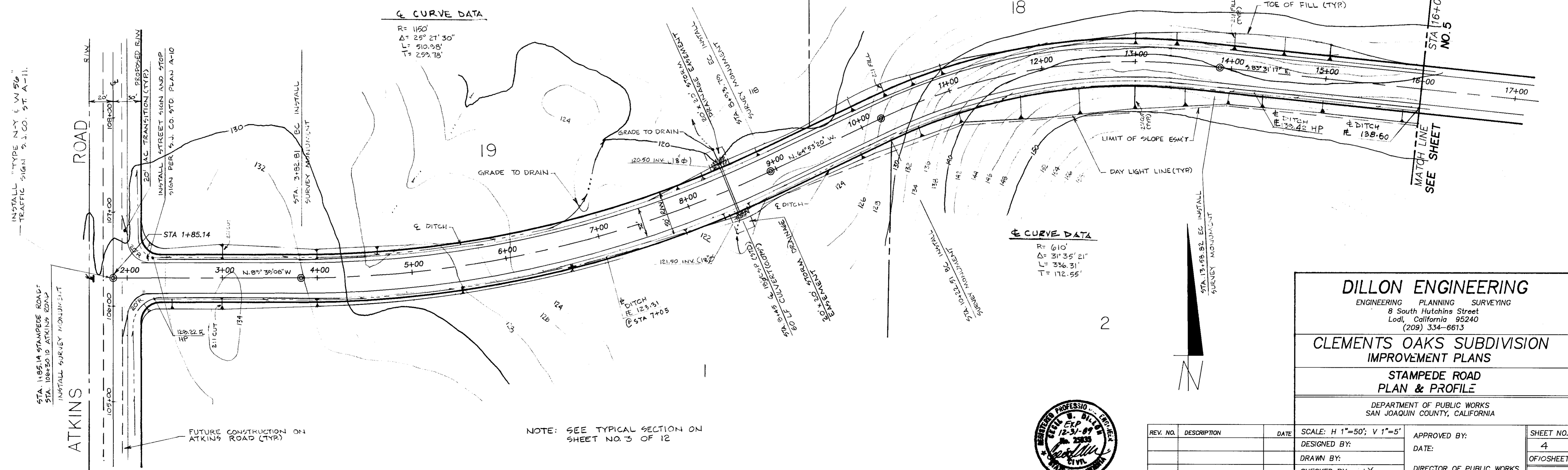
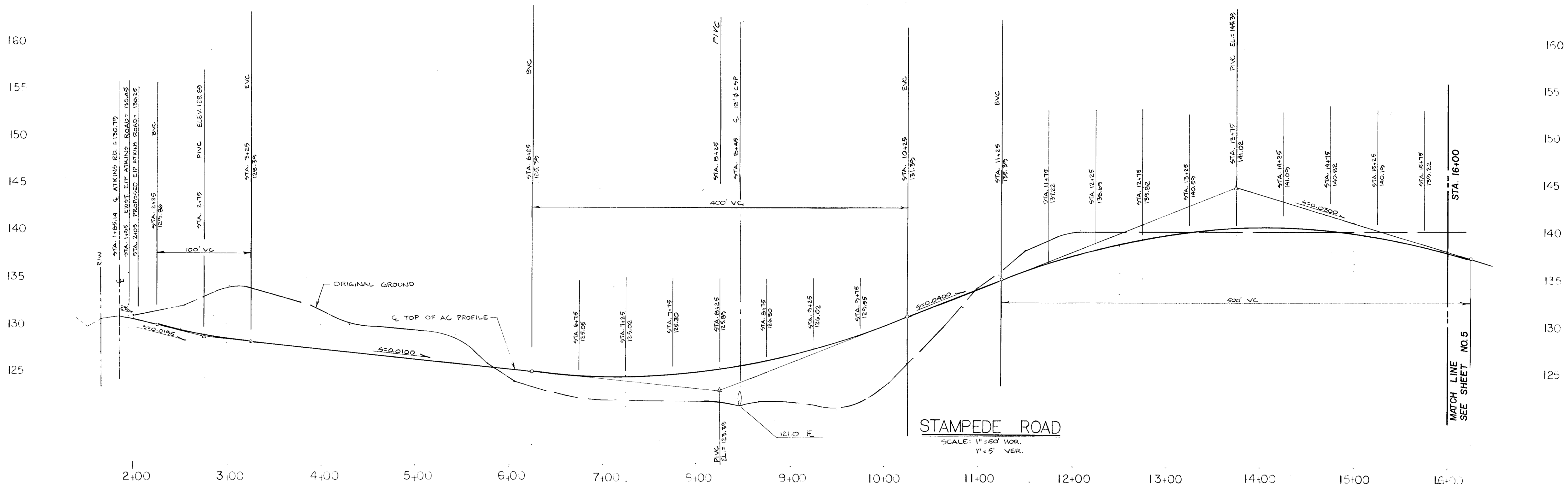
DEPARTMENT OF PUBLIC WORKS
SAN JOAQUIN COUNTY, CALIFORNIA



REV. NO.	DESCRIPTION	DATE

SCALE: H 1"=50'; V 1"=5'	APPROVED BY:	SHEET NO.
DESIGNED BY:	DATE:	5
DRAWN BY:	DIRECTOR OF PUBLIC WORKS	OF 10 SHEETS
CHECKED BY: SLY 8/1/67	SAN JOAQUIN COUNTY, CALIF.	JOB NO. 8733
AS BUILT BY:		

SU 1973



☉ CURVE DATA
R = 1150'
Δ = 25° 21' 30"
L = 510.58'
T = 299.78'

☉ CURVE DATA
R = 610'
Δ = 31° 35' 21"
L = 336.31'
T = 172.55'



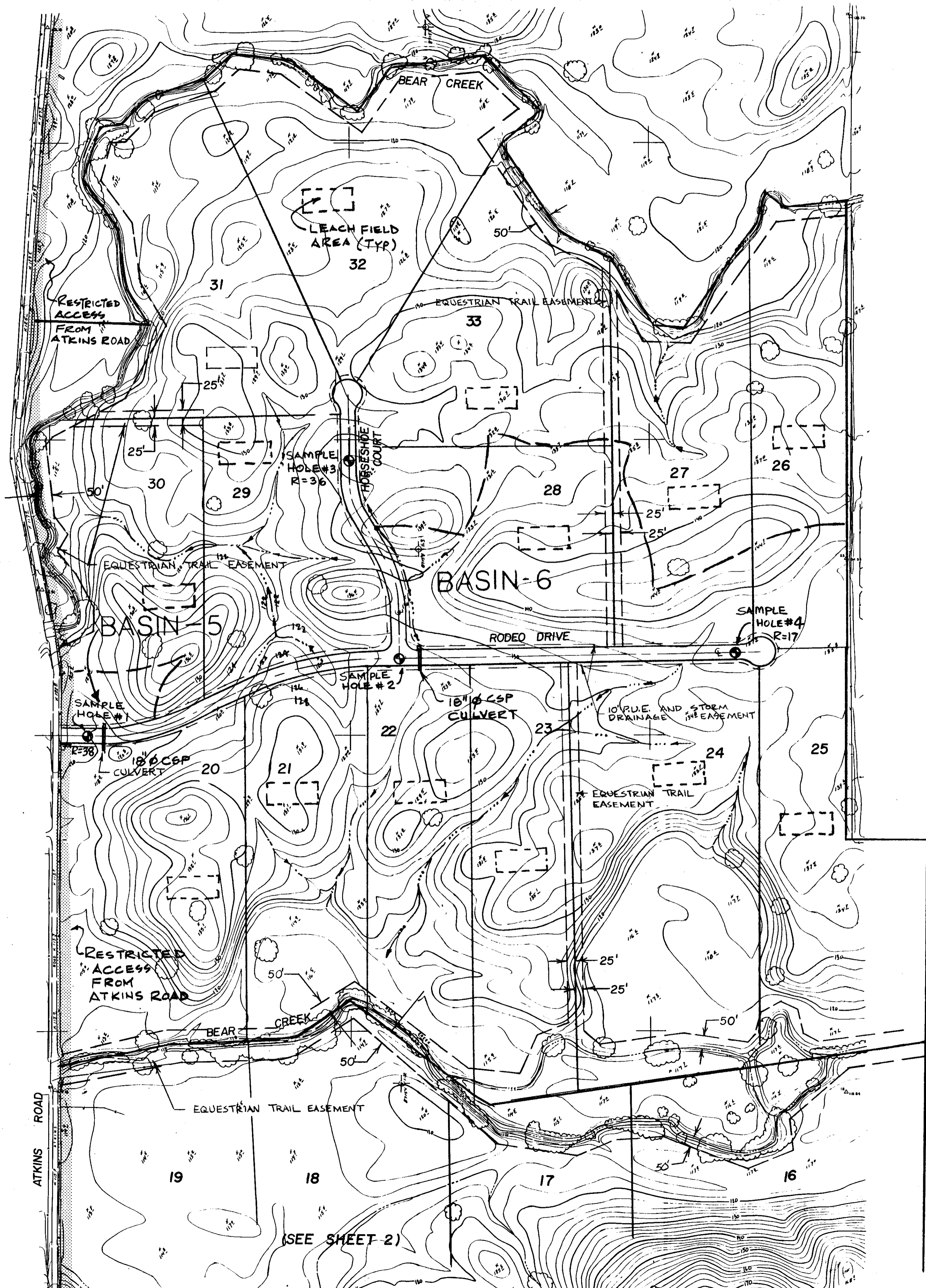
DILLON ENGINEERING
ENGINEERING PLANNING SURVEYING
8 South Hutchins Street
Lodi, California 95240
(209) 334-6613

**CLEMENTS OAKS SUBDIVISION
IMPROVEMENT PLANS**

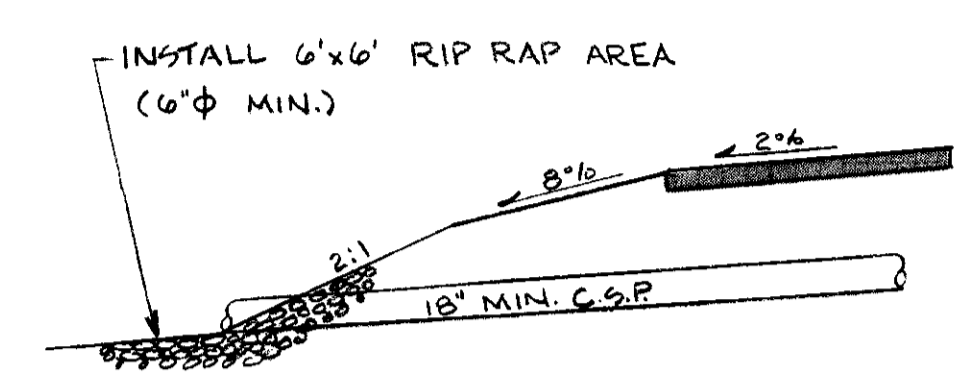
**STAMPEDE ROAD
PLAN & PROFILE**

DEPARTMENT OF PUBLIC WORKS
SAN JOAQUIN COUNTY, CALIFORNIA

REV. NO.	DESCRIPTION	DATE	SCALE: H 1"=50'; V 1"=5'	APPROVED BY:	SHEET NO.
	DESIGNED BY:				4
	DRAWN BY:				OF 10 SHEETS
	CHECKED BY: G.L.			DIRECTOR OF PUBLIC WORKS SAN JOAQUIN COUNTY, CALIF.	JOB NO. 8733
	AS BUILT BY:				

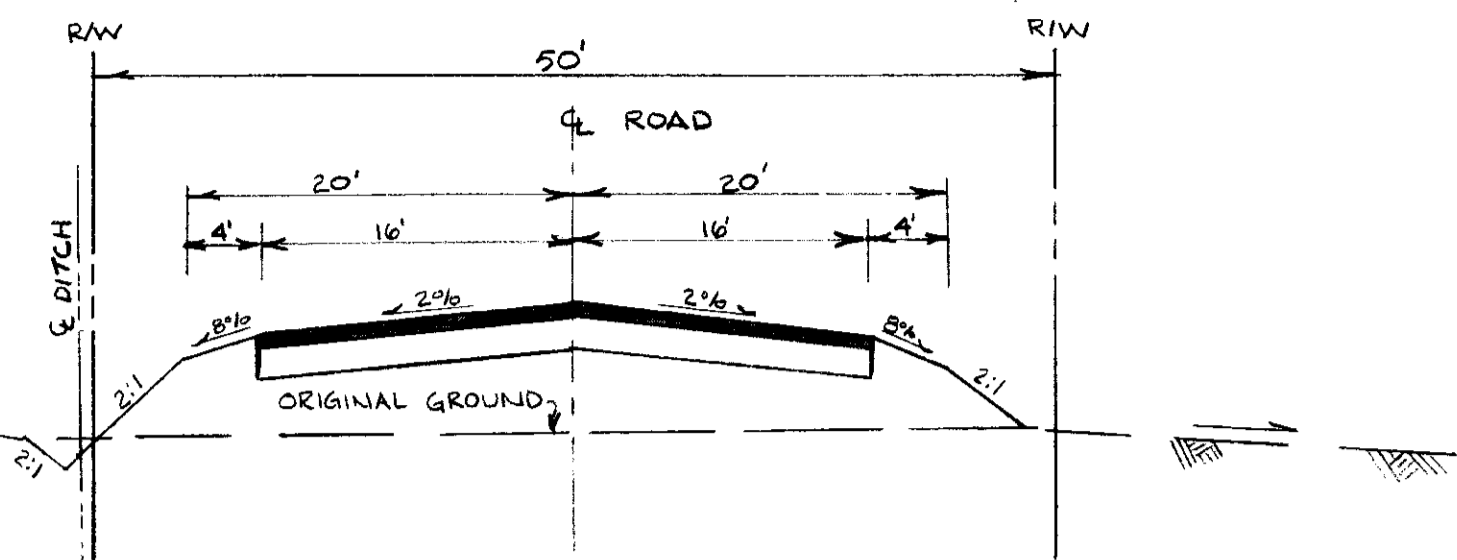


NOTE- TRENCH TO BE BACKFILLED PER S.J. CO. STD. PLAN A-7.

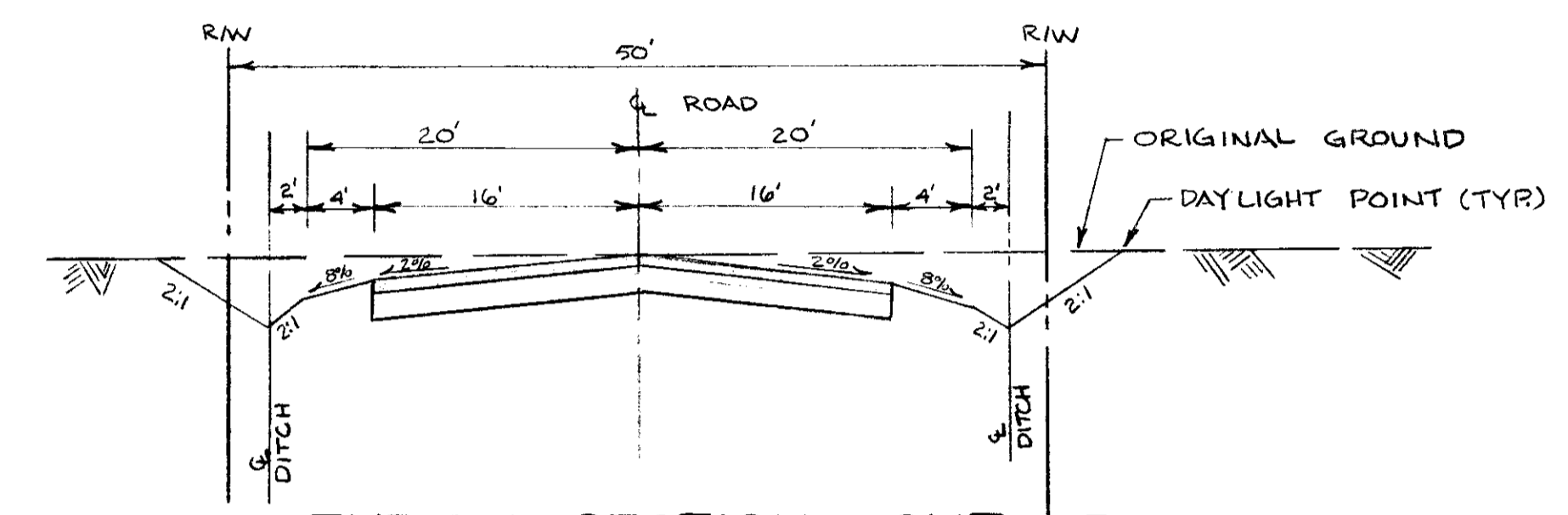


NOTE- RIP RAP PER STA. OF CAL. STD. SPECS. SEC. 72.

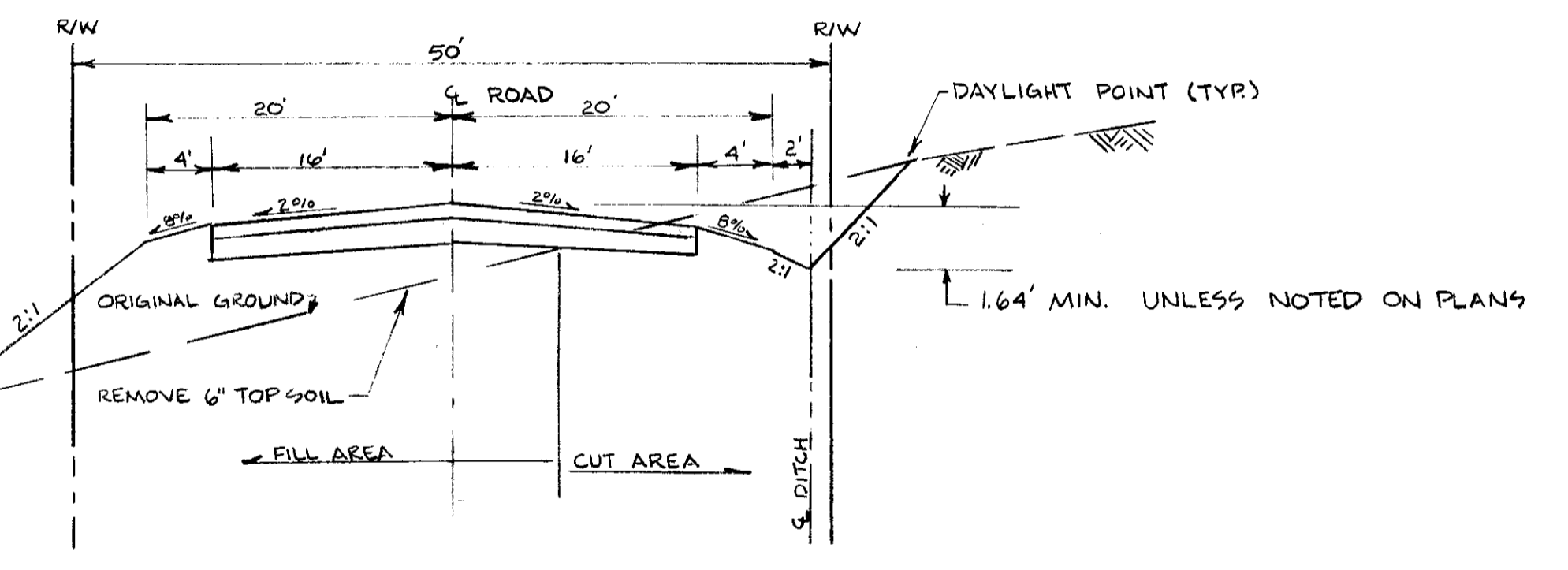
RIP RAP DETAIL
NTS



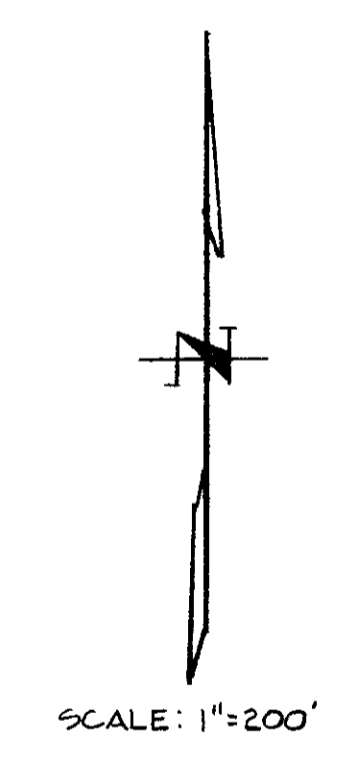
TYPICAL SECTION - FILL AREA
NTS



TYPICAL SECTION - CUT AREA
NTS



TYPICAL SECTION - HILL AREA
NTS



STAMPEDE ROAD, RODEO DRIVE, AND HORSESHOE COURT

NAME	STATION	R	TI	AC	AB
RODEO DRIVE	60+10 - 75+75	38	4.0	2"	6"
RODEO DRIVE	75+75 - 83+83.26	17	4.0	2"	8"
HORSESHOE CT	20+00 - 29+25.02	30	4.0	2"	6"
STAMPEDE RD.	1+95 - 11+15	46	4.0	2"	6"
STAMPEDE RD.	11+15 - 55+67	16	4.0	2"	8"



DILLON ENGINEERING
 ENGINEERING PLANNING SURVEYING
 8 South Hutchins Street
 Lodi, California 95240
 (209) 334-6613

**CLEMENTS OAKS SUBDIVISION
 IMPROVEMENT PLANS**

**EXISTING TOPOGRAPHY
 DRAINAGE & GRADING PLAN - 2**

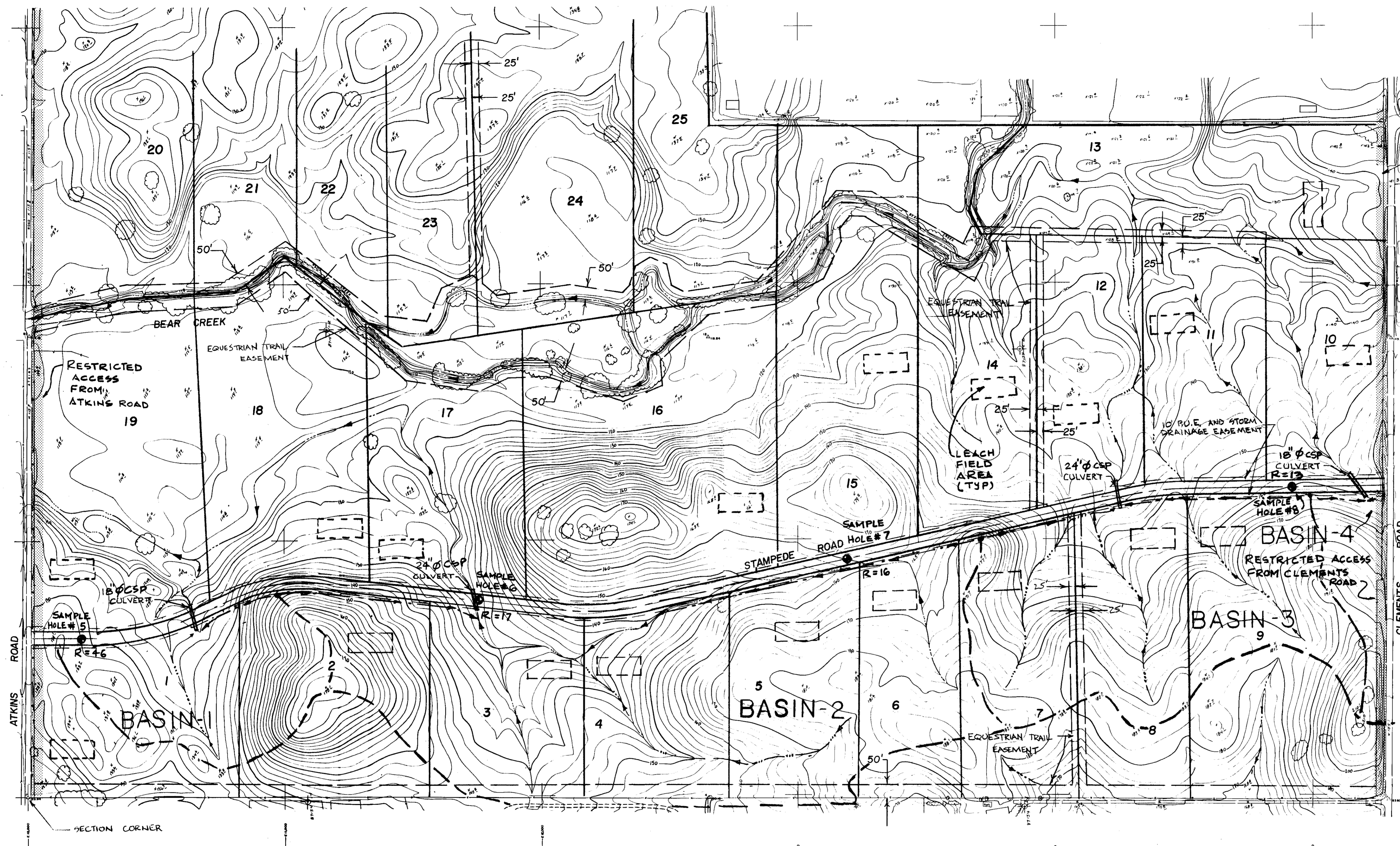
DEPARTMENT OF PUBLIC WORKS
 SAN JOAQUIN COUNTY, CALIFORNIA

REV. NO.	DESCRIPTION	DATE	SCALE: 1"=200'	APPROVED BY:	SHEET NO.
			DESIGNED BY:	DATE:	3
			DRAWN BY:		OF SHEETS
			CHECKED BY: SL	DIRECTOR OF PUBLIC WORKS SAN JOAQUIN COUNTY, CALIF.	JOB NO. 8733
			AS BUILT BY:		

SU 1974

(SEE SHEET 2)

(SEE SHEET 3)



SCALE: 1" = 200'

NOTE - NO LOT GRADING REQUIRED ORIGINAL GROUND TO REMAIN UNDISTURBED AND NATURAL DRAINAGE COURSES TO REMAIN AS IS.

DILLON ENGINEERING

ENGINEERING PLANNING SURVEYING
8 South Hutchins Street
Lodi, California 95240
(209) 334-6613

**CLEMENTS OAKS SUBDIVISION
IMPROVEMENT PLANS**

**EXISTING TOPOGRAPHY
DRAINAGE & GRADING PLAN - I**

DEPARTMENT OF PUBLIC WORKS
SAN JOAQUIN COUNTY, CALIFORNIA



REV. NO.	DESCRIPTION	DATE	SCALE: 1"=200'	APPROVED BY:	SHEET NO.
	DESIGNED BY:			DATE:	2
	DRAWN BY:			DIRECTOR OF PUBLIC WORKS	OF 10 SHEETS
	CHECKED BY: <i>ELT</i>			SAN JOAQUIN COUNTY, CALIF.	JOB NO.
	AS BUILT BY:				8733

SU - 1975

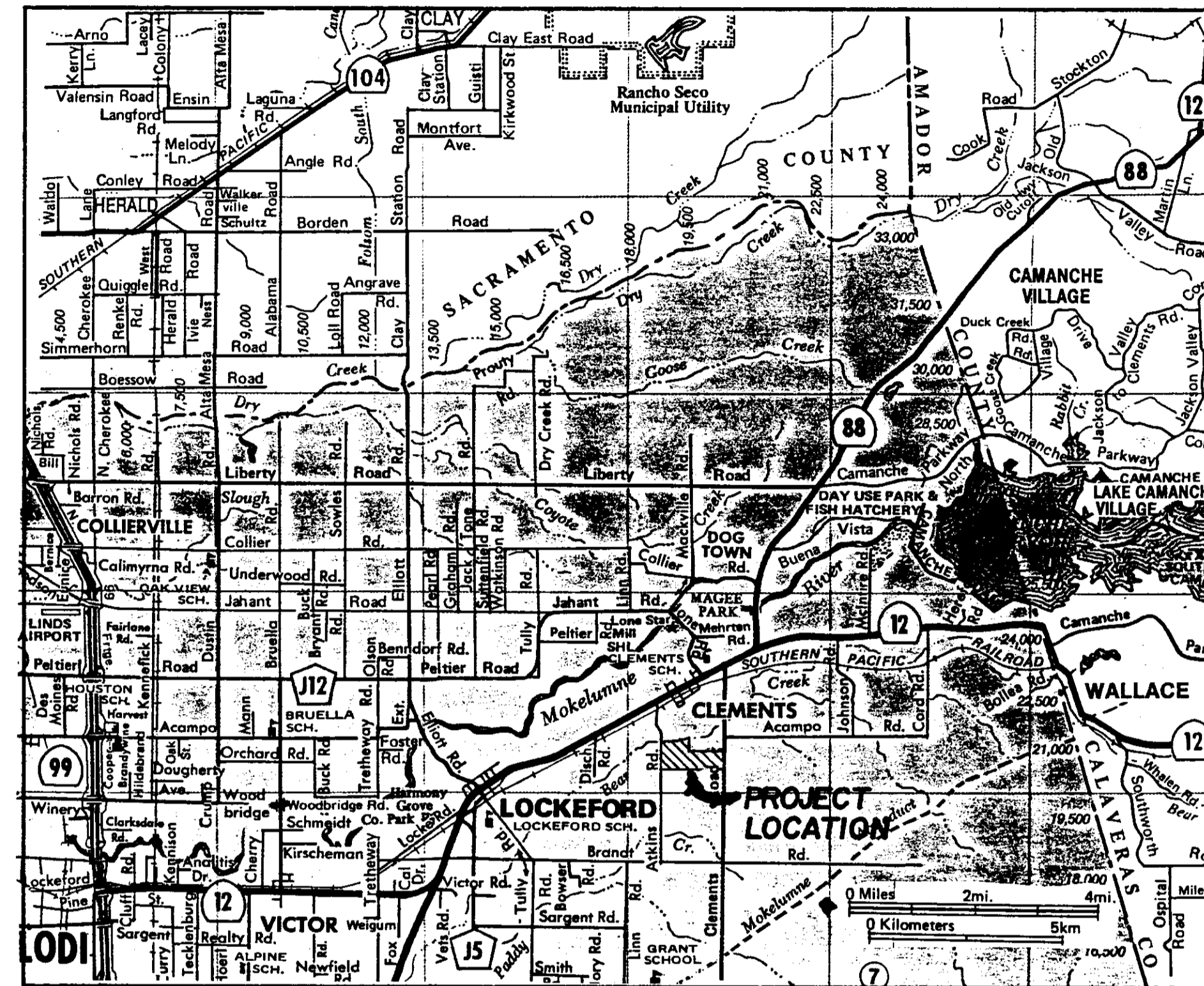
**IMPROVEMENT PLANS FOR
TRACT NO. 1864
CLEMENTS OAKS SUBDIVISION**

SAN JOAQUIN COUNTY, CALIFORNIA
DILLON ENGINEERING

ENGINEERING PLANNING SURVEYING
8 South Hutchins Street
Lodi, California 95240
(209) 334-6613

LEGEND

CSP	CORRUGATED STEEL PIPE
FL	FLOW LINE
STA	STATION
HOR.	HORIZONTAL
PT	POINT
VER.	VERTICAL
BC	BEGINNING OF CURVE
EXIST.	EXISTING
AC	ASPHALT CONCRETE
EC	END OF CURVE
EL.	ELEVATION
LF	LINEAR FEET
	DITCH
LP	LOW POINT
HP	HIGH POINT
NTS	NOT TO SCALE
⊙	CENTERLINE
S	SLOPE
VC	VERTICAL CURVE
TYP.	TYPICAL
DIA.	DIAMETER
A.B.	AGGREGATE BASE
MIN.	MINIMUM
EP	EDGE OF PAVEMENT
ELEV.	ELEVATION
•	PROPERTY CORNERS
- x - x -	FENCE
⊙	MONUMENT BOX (S.J. CO. STD. A-8)
▭	NEW PAVEMENT
BVC	BEGIN VC
EVC	END VC
PIVC	POINT OF INTERSECTION VC
RC	RELATIVE COMPACTION
R/W	RIGHT-OF-WAY
FL	PROPERTY LINE
PRVC	POINT OF REVERSED VERTICAL CURVE
—	STREET SIGN



VICINITY MAP

NTS

INDEX TO SHEETS

SHEET NO.	TITLE OF DRAWING
1.	COVER SHEET
2.	EXISTING TOPOGRAPHY, DRAINAGE & GRADING PLAN - 1
3.	EXISTING TOPOGRAPHY, DRAINAGE & GRADING PLAN - 2
	PLAN & PROFILE
4.	STAMPEDE ROAD (STA. 1+85.14 TO STA. 16+00)
5.	STAMPEDE ROAD (STA. 16+00 TO STA. 29+00)
6.	STAMPEDE ROAD (STA. 29+00 TO STA. 43+00)
7.	STAMPEDE ROAD (STA. 43+00 TO STA. 55+78.16)
8.	RODEO DRIVE (STA. 60+00 TO STA. 75+00)
9.	RODEO DRIVE (STA. 75+00 TO STA. 83+83.26)
10.	HORSESHOE DRIVE (STA. 90+00 TO STA. 99+25.02)

GENERAL NOTES

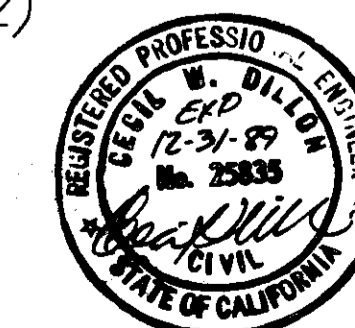
- BENCHMARK IS U.S.C. & G. S. BRASS CAP SET IN NORTHWEST CORNER OF CONCRETE HEADWALL THAT IS LOCATED 0.5 MILES WEST OF THE INTERSECTION OF THIRD STREET & HIGHWAY 12 AND 88 IN CLEMENTS. E.L. = 123.038'
- ALL WORK SHALL CONFORM TO THE COUNTY OF SAN JOAQUIN CONSTRUCTION SPECIFICATIONS AND APPLICABLE STANDARD PLANS.
- REFER TO THE SUBDIVISION MAP OF THIS SUBDIVISION FOR NECESSARY BOUNDARY AND LOT PROPERTY LINE DATA.
- DILLON ENGINEERING, CIVIL ENGINEERS, SHALL SET ALL SURVEY CONTROLS AND CONSTRUCTION STAKES AS NECESSARY FOR COMPLETION OF WORK. THE CONTRACTOR SHALL BE RESPONSIBLE FOR THE PRESERVATION OF ALL SURVEY AND CONSTRUCTION STAKES. SURVEY AND CONSTRUCTION STAKES THAT ARE LOST OR DESTROYED DUE TO CONTRACTOR'S NEGLIGENCE WILL BE SET BY THE ENGINEER AT THE CONTRACTOR'S EXPENSE.
- CONTRACTOR SHALL BE RESPONSIBLE FOR LOCATIONS AND PROTECTING ALL UNDERGROUND FACILITIES AFFECTED BY THE WORK AND SHALL CONTACT UNDERGROUND SERVICES ALERT (USA) 48 HOURS PRIOR TO ANY EXCAVATION WORK FOR DETERMINATION AND LOCATION OF UNDERGROUND UTILITIES (PHONE 800-642-2444).
- CONTRACTOR AGREES THAT HE SHALL ASSUME SOLE AND COMPLETE RESPONSIBILITY FOR JOB SITE CONDITIONS DURING THE COURSE OF CONSTRUCTION OF THIS PROJECT, INCLUDING SAFETY FOR ALL PERSONS AND PROPERTY; THAT THIS REQUIREMENT SHALL APPLY CONTINUOUSLY AND NOT BE LIMITED TO NORMAL WORKING HOURS; AND THAT THE CONTRACTOR SHALL DEFEND, INDEMNIFY, AND HOLD THE OWNER AND THE ENGINEER HARMLESS FROM ANY AND ALL LIABILITY, REAL OR ALLEGED, IN CONNECTION WITH THE PERFORMANCE OF WORK ON THIS PROJECT.
- CONTRACTOR SHALL GIVE ENGINEER A MINIMUM OF 48 HOUR NOTIFICATION PRIOR TO STAKING ANY UTILITIES.
- CONTRACTOR SHALL INSPECT SITE PRIOR TO BIDDING.
- PAVEMENT WHICH IS TO BE REMOVED SHALL BE SAWCUT ON A NEAT, STRAIGHT LINE AS SHOWN ON STRUCTURAL SECTION DETAIL. (ON CLEMENTS & ATKINS ROAD)
- APPROPRIATE DUST CONTROL TO BE PROVIDED FOR THE ALLEVIATION OR PREVENTION OF A DUST NUISANCE, AT THE CONTRACTOR'S EXPENSE.
- PRIOR TO SUBMITTING A BID, THE CONTRACTOR SHALL PERFORM THE NECESSARY EARTHWORK CALCULATIONS TO DETERMINE THE AMOUNT OF CUT AND FILL AND RESULTANT EXCESS OR SHORTAGE OF DIRT ONSITE, AND NOTIFY THE ENGINEER OF HIS RESULTS. IT IS THE CONTRACTOR'S RESPONSIBILITY TO INSURE THAT THE EARTHWORK WILL BALANCE ONSITE. EXCESS OF DIRT SHALL BE DISTRIBUTED EVENLY ON ALL LOTS.

DILLON ENGINEERING
ENGINEERING PLANNING SURVEYING
8 South Hutchins Street
Lodi, California 95240
(209) 334-6613

**CLEMENTS OAKS SUBDIVISION
IMPROVEMENT PLANS**

COVER SHEET

DEPARTMENT OF PUBLIC WORKS SAN JOAQUIN COUNTY, CALIFORNIA	
REV. NO.	DESCRIPTION
DATE	SCALE: AS SHOWN
DESIGNED BY:	APPROVED BY: <i>Henry M. Hill</i>
DRAWN BY:	DATE: August 25, 1987
CHECKED BY: <i>SLY 8/78</i>	DIRECTOR OF PUBLIC WORKS SAN JOAQUIN COUNTY, CALIF.
AS BUILT BY:	JOB NO. 8733



SU 1976