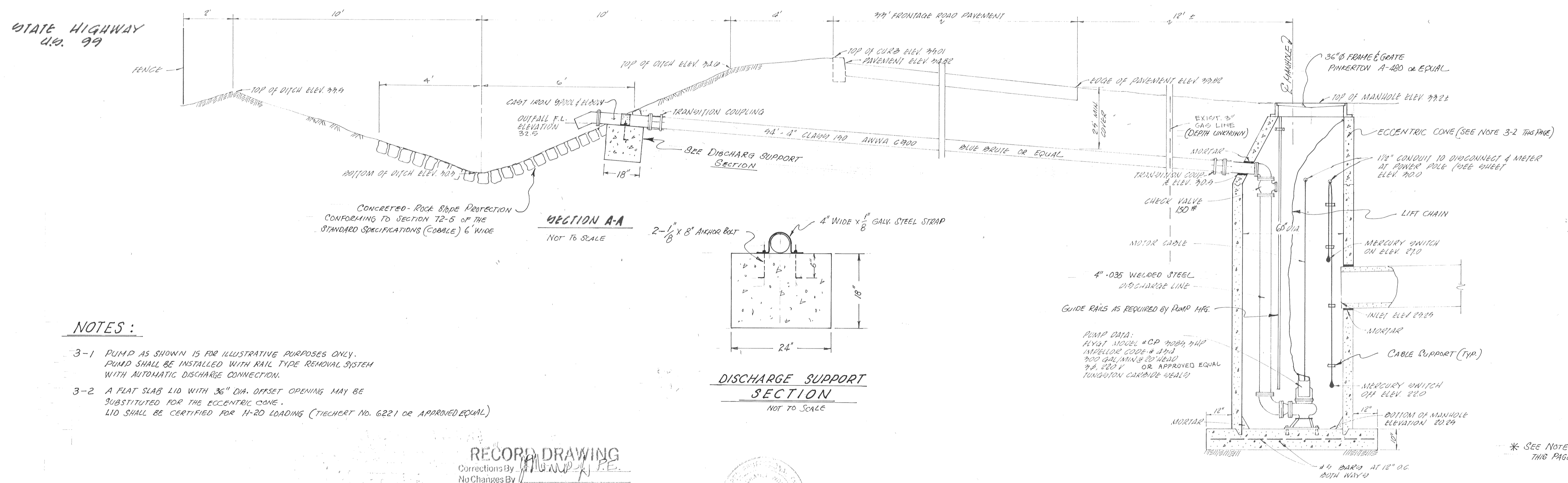


**ON SITE STORM PUMPING STATION\***

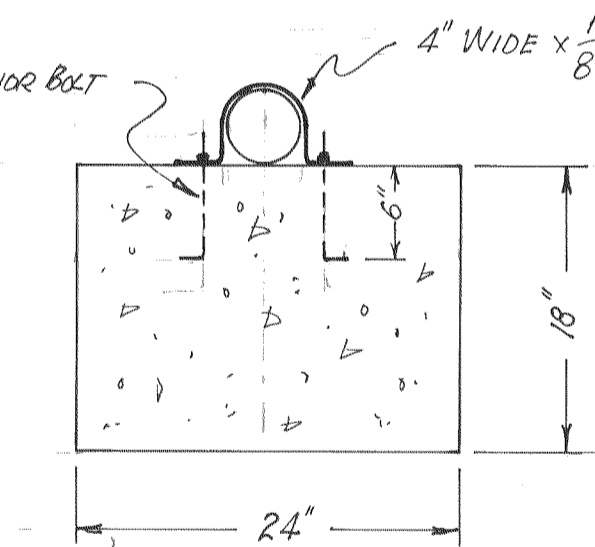
NOT TO SCALE

\* SEE NOTE 3-1 THIS PAGE



**SECTION A-A**

NOT TO SCALE



**DISCHARGE SUPPORT SECTION**

NOT TO SCALE

**NOTES:**

- 3-1 PUMP AS SHOWN IS FOR ILLUSTRATIVE PURPOSES ONLY. PUMP SHALL BE INSTALLED WITH RAIL TYPE REMOVAL SYSTEM WITH AUTOMATIC DISCHARGE CONNECTION.
- 3-2 A FLAT SLAB LID WITH 36" DIA. OFFSET OPENING MAY BE SUBSTITUTED FOR THE ECCENTRIC CONE. LID SHALL BE CERTIFIED FOR H-20 LOADING (TIECHERT No. 6221 OR APPROVED EQUAL)

**RECORD DRAWING**

Corrections By \_\_\_\_\_  
 No Changes By \_\_\_\_\_  
 Date 3/21/88  
 Any Person Using This Drawing Should Verify All Information By Inspecting The Site Of Work.



**STORM PUMPING STATION AT HIGHWAY 99 FRONTAGE ROAD\***

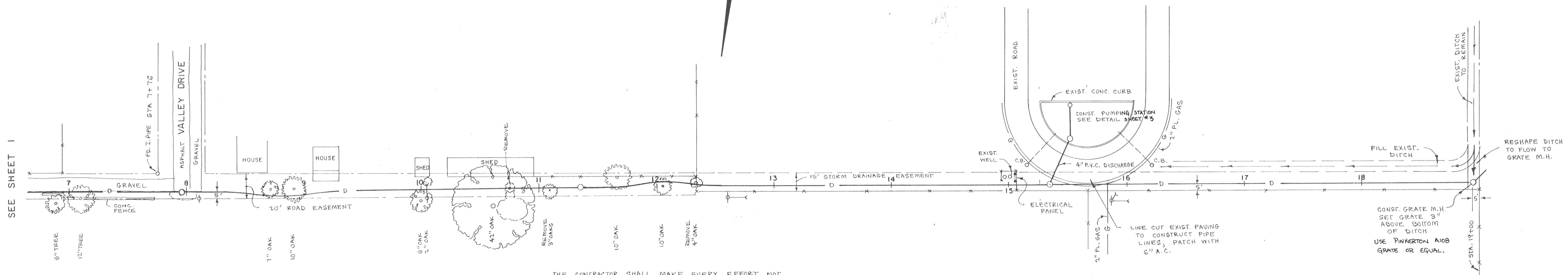
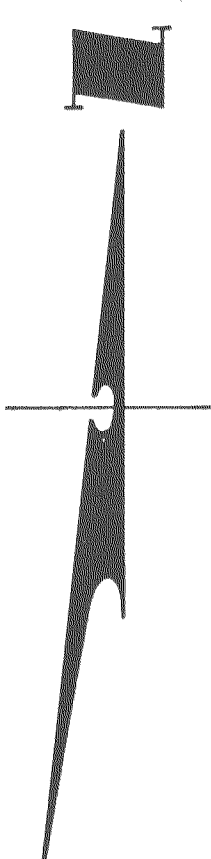
NOT TO SCALE

\* SEE NOTE 3-1 THIS PAGE

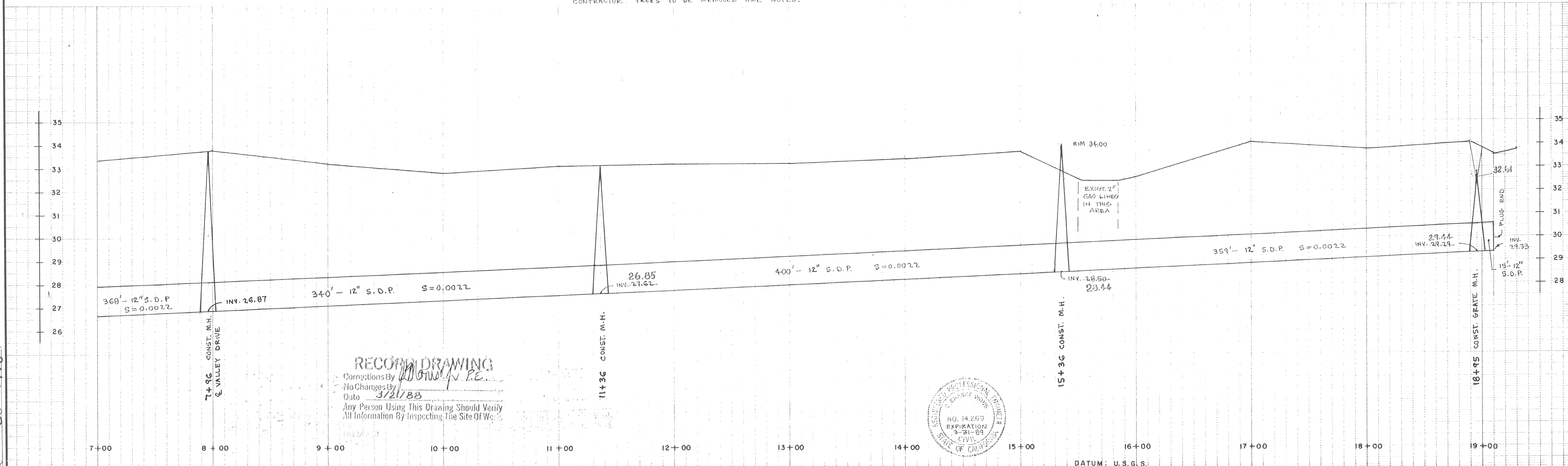
SUBDIVISION SU 1977

APPROVED _____ 19 _____	APPROVED _____ 19 _____	REVISIONS	WONG ENGINEERS, INC. PLANNING • ENGINEERING • SURVEYING STOCKTON, CALIFORNIA	JOB NO. 2180 DATE JULY 1986 SCALE HORIZ AS SHOWN SCALE VERT _____ DRAWN _____ DESIGN WE CHECK _____	MORADA LANE AREA DRAINAGE PLAN <b>PUMPING STATION DETAILS</b>	SHEET <b>3</b> OF THREE FILE
		NO. DESCRIPTION DATE BY	R.C.E. NO. 14269			

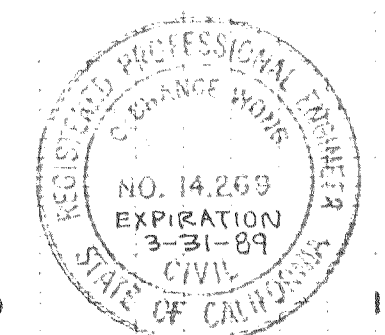
SEE SHEET 1



THE CONTRACTOR SHALL MAKE EVERY EFFORT NOT TO DAMAGE TREES. TREES AND/OR LIMBS THAT MUST BE REMOVED SHALL BE DISPOSED OF BY THE CONTRACTOR. TREES TO BE REMOVED ARE NOTED.



**RECORD DRAWING**  
 Corrections By: *[Signature]*  
 No Changes By: *[Signature]*  
 Date: 3/21/88  
 Any Person Using This Drawing Should Verify All Information By Inspecting The Site Of Work.



SUBDIVISION SU 1978  
 SHEET NO. 2 OF THREE  
 DATE JULY 1986

APPROVED \_\_\_\_\_ 19 \_\_\_\_\_

REVISIONS			
NO.	DESCRIPTION	DATE	BY

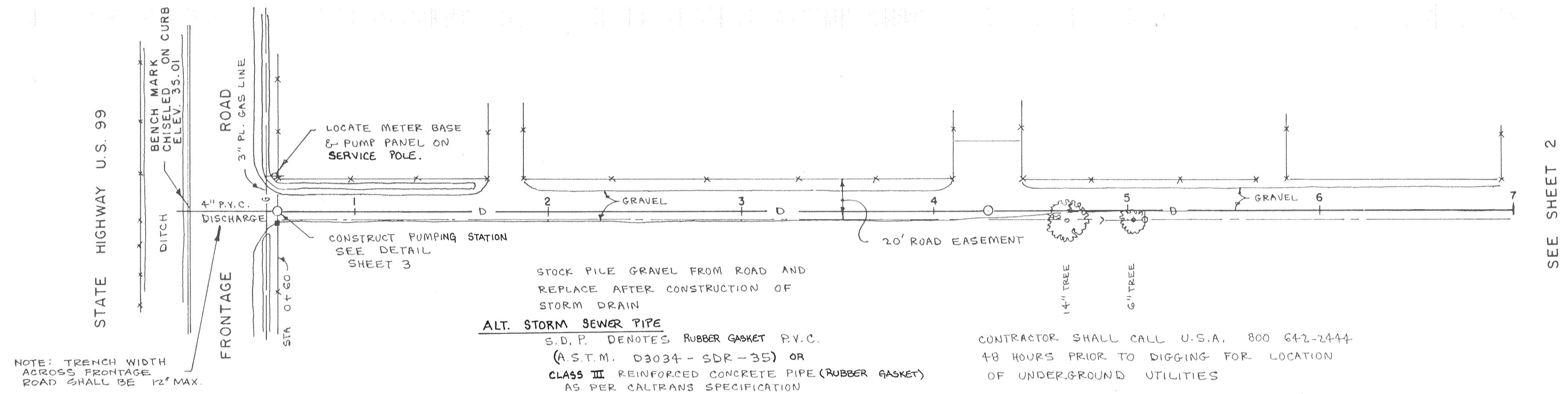
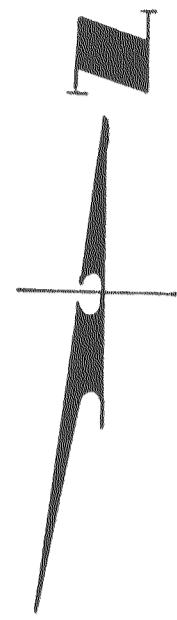
**WONG ENGINEERS, INC.**  
 PLANNING • ENGINEERING • SURVEYING  
 STOCKTON, CALIFORNIA  
*[Signature]*  
 R.C.E. NO. 14269

JOB NO. 2180  
 DATE JULY 1986  
 SCALE HORIZ 1" = 40'  
 SCALE VERT 1" = 2'  
 DRAWN \_\_\_\_\_  
 DESIGN \_\_\_\_\_  
 CHECK \_\_\_\_\_

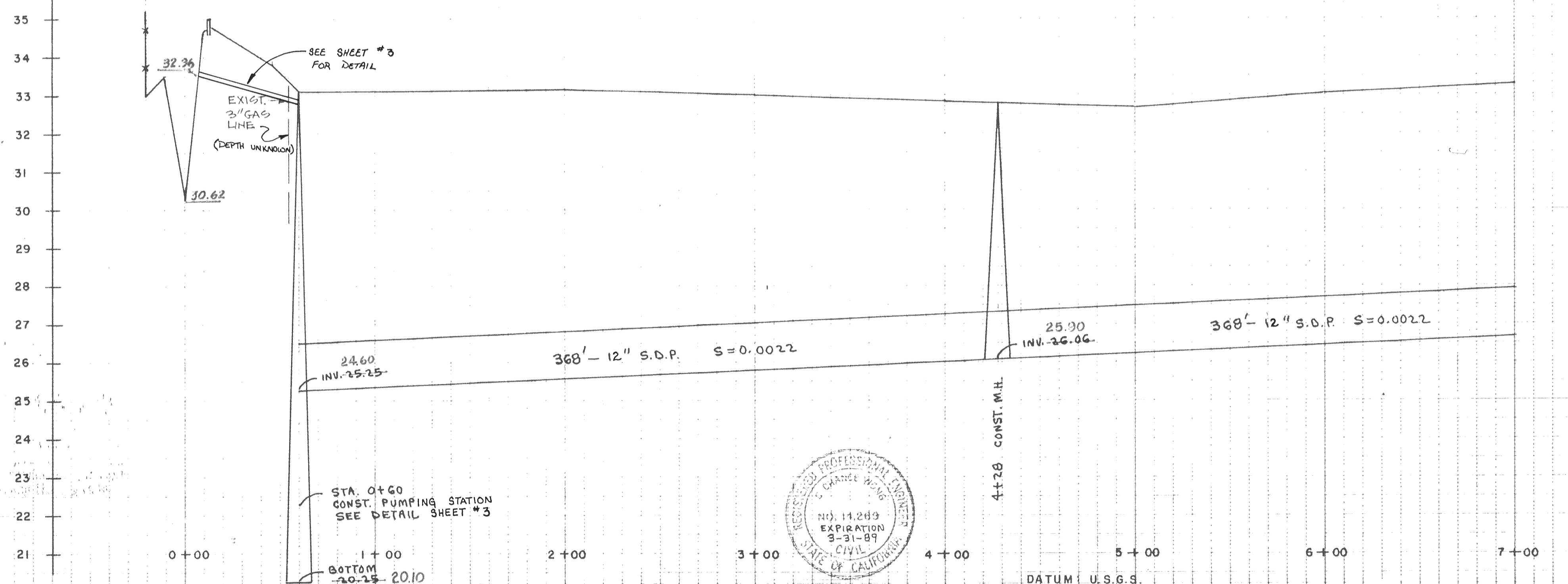
**MORADA LANE AREA DRAINAGE PLAN**  
**PLAN AND PROFILE**

SHEET  
**2**  
 OF THREE  
 FILE

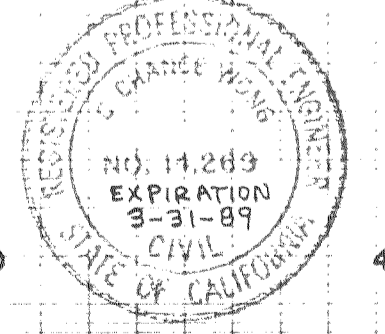




NOTE:  
15" ALT. STORM SEWER PIPE MAY BE SUBSTITUTED AT COUNTY'S OPTION.



RECORD DRAWING  
 Corrections By: *[Signature]*  
 No Changes By: *[Signature]*  
 Date: 3/21/88  
 Any Person Using This Drawing Should Verify All Information By Inspecting The Site.



APPROVED Oct 30 1986  
*Manuel Lopez*

APPROVED March 4, 1987  
*Henry M. Hirata*  
 SAN JOAQUIN COUNTY DIRECTOR OF PUBLIC WORKS  
 R.C.E. 21258

NO.	REVISIONS DESCRIPTION	DATE	BY

**WONG ENGINEERS, INC.**  
 PLANNING • ENGINEERING • SURVEYING  
 STOCKTON, CALIFORNIA  
*Chana Wong* R.C.E. NO. 14269

JOB NO. 2180  
 DATE JULY 1986  
 SCALE HORIZ 1" = 40'  
 SCALE VERT 1" = 2'  
 DRAWN  
 DESIGN  
 CHECK

**MORADA LANE AREA DRAINAGE PLAN**  
**PLAN AND PROFILE**

SHEET  
**1**  
 OF THREE  
 FILE

SEE SHEET 2