

SHOULDER BACKING	
Location	Quantity
Sta.1+00 to Sta.4+00 (Rt.)	5 Tons
Sta.1+15 to Sta.4+42 (Lt.)	15 Tons
Sta.4+25 to Sta.9+80 (Rt.)	14 Tons
Sta.9+00 to Sta.12+68 (Lt.)	37 Tons
Total	71 Tons

12" DIA. ALTERNATIVE PIPE	
Location	Quantity
Sta.3+69	62 L.F.
Sta.6+40	74 L.F.
Sta.9+60	80 L.F.
Sta.11+18	15 L.F.
Sta.14+56	53 L.F.
Total	284 L.F.

STORM DRAIN INLET	
Location	Quantity
Sta.3+69	2 EA.
Sta.14+56	3 EA.
Sta.6+40	2 EA.
Sta.9+60	1 EA.
Sta.11+00	2 EA.
Total	10 EA.

12" DIAMETER ALTERNATIVE PIPE

ALTERNATIVE PIPE ALLOWED TO BE INCORPORATED IN THE WORK, UNDER SECTION 71 OF THE SPECIAL PROVISIONS, SHALL CONSIST OF THE FOLLOWING KINDS:

- Reinforced Concrete Pipe, Class III.
- PVC Pipe, SDR 35.

EARTHWORK (MISC. AREAS)	
Location	Quantity
Sta.1+00 to Sta.4+00 (Rt.)	180 L.F.
Sta.1+15 to Sta.4+42 (Lt.)	327 L.F.
Sta.4+25 to Sta.9+80 (Rt.)	470 L.F.
Sta.9+00 to Sta.12+68 (Lt.)	368 L.F.
Sta.11+50 to Sta.16+89 (Rt.)	539 L.F.
Total	1,884 L.F.

12" DIA. R.C. DRIVEWAY PIPE (CLASS IV)	
Location	Quantity
Sta.5+70 (Rt.)	6 L.F.
Sta.8+85 (Rt.)	32 L.F.
Sta.11+40 (Lt.)	24 L.F.
Sta.15+55 (Rt.)	16 L.F.
Total	78 L.F.

FRAME & GRATE (S.D.I.)	
Location	Quantity
Sta.3+69	2 EA.
Sta.14+56	3 EA.
Sta.6+40	2 EA.
Sta.9+60	1 EA.
Sta.11+00	2 EA.
Total	10 EA.

AGGREGATE BASE (TRENCH REPAIR)	
Location	Quantity
Sta.27+65 to Sta.5+28	263 S.Y.
Sta.5+43 to Sta.6+27	84 S.Y.
Sta.8+75 to Sta.8+95	20 S.Y.
Sta.14+05 to Sta.14+15	10 S.Y.
Sta.15+50 to Sta.15+62	12 S.Y.
Total	389 S.Y.

21" R.C. STORM SEWER PIPE (CLASS III)	
Location	Quantity
Sta.0+75	8 L.F.
Total	8 L.F.

FRAME & COVER (MANHOLE)	
Location	Quantity
Sta.0+75	1 EA.
Sta.3+69	1 EA.
Sta.6+40	1 EA.
Sta.9+60	1 EA.
Sta.11+00	1 EA.
Sta.14+56	1 EA.
Total	6 EA.

A.C. MISC. AREAS (TRENCH REPAIR - 0.30')	
Location	Quantity
Sta.1+50 to Sta.2+65	115 S.Y.
Sta.5+28 to Sta.5+43	15 S.Y.
Sta.6+25 to Sta.7+40	115 S.Y.
Sta.9+85 to Sta.11+50	165 S.Y.
Total	410 S.Y.

60" RC. STORM SEWER PIPE (CLASS III)	
Location	Quantity
Sta.0+75 (Stub)	8 L.F.
Sta.0+75 to Sta.3+69	290 L.F.
Sta.3+69 to Sta.6+40	267 L.F.
Sta.6+40 to Sta.9+60	316 L.F.
Sta.9+60 to Sta.11+00	136 L.F.
Sta.11+00 to Sta.14+56	352 L.F.
Sta.14+56 to Sta.17+15	255 L.F.
Total	1,624 L.F.

A.C. MISC. AREAS (TRENCH REPAIR - 0.70')	
Location	Quantity
Sta.3+69	11 S.Y.
Sta.6+40	23 S.Y.
Sta.9+60	11 S.Y.
Sta.14+56	11 S.Y.
Sta.16+60 to Sta.17+15	52 S.Y.
Total	108 S.Y.

MANHOLE	
Location	Quantity
Sta.0+75	1 EA.
Sta.3+69	1 EA.
Sta.6+40	1 EA.
Sta.9+60	1 EA.
Sta.11+00	1 EA.
Sta.14+56	1 EA.
Total	6 EA.

DATE 5/15/91

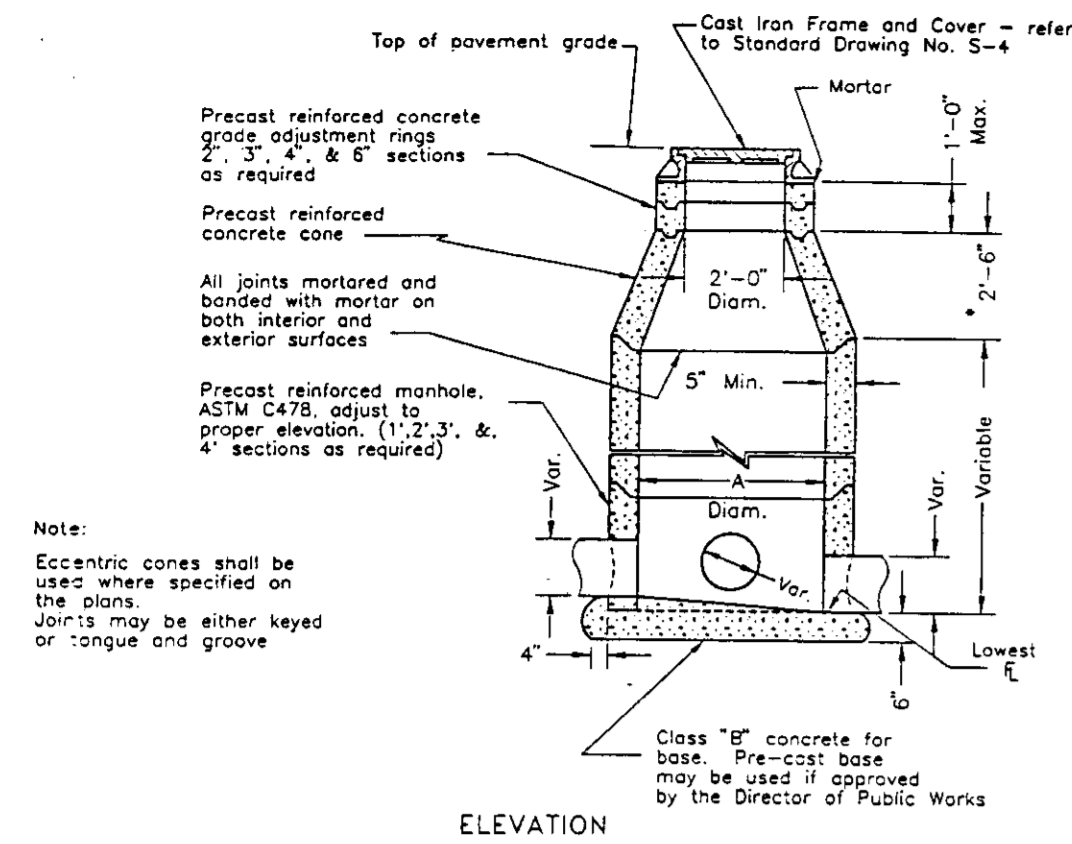
DRAWN BY: J.C. White	5/1/91	PROJECT ENGINEER	DATE
REVISIONS		<i>Dean A. Hillman</i>	5/1/91
no.	date	description	DATE
ACAD	FILE NAME	DATE	NO.

COUNTY OF SAN JOAQUIN

COUNTY SERVICE AREA NO. 12 SAN JOAQUIN COUNTY, CALIFORNIA THORNTON DRAINAGE PROJECT PHASE 2
--

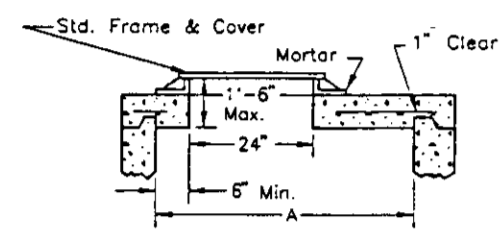
SACRAMENTO BLVD.
CONSTRUCTION NOTES

SHEET NO.	TOTAL SHEETS
8	8



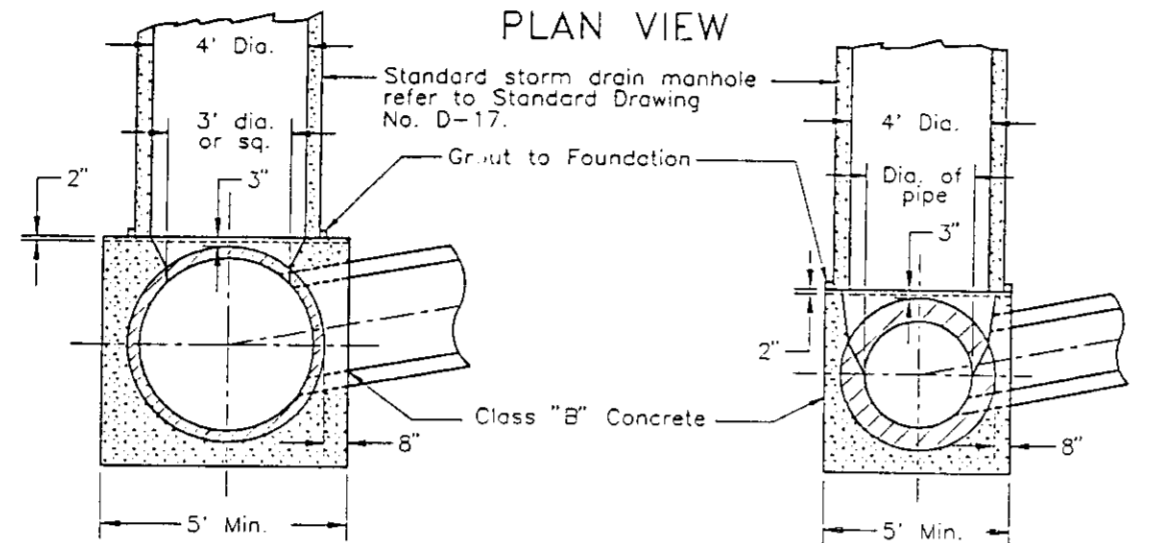
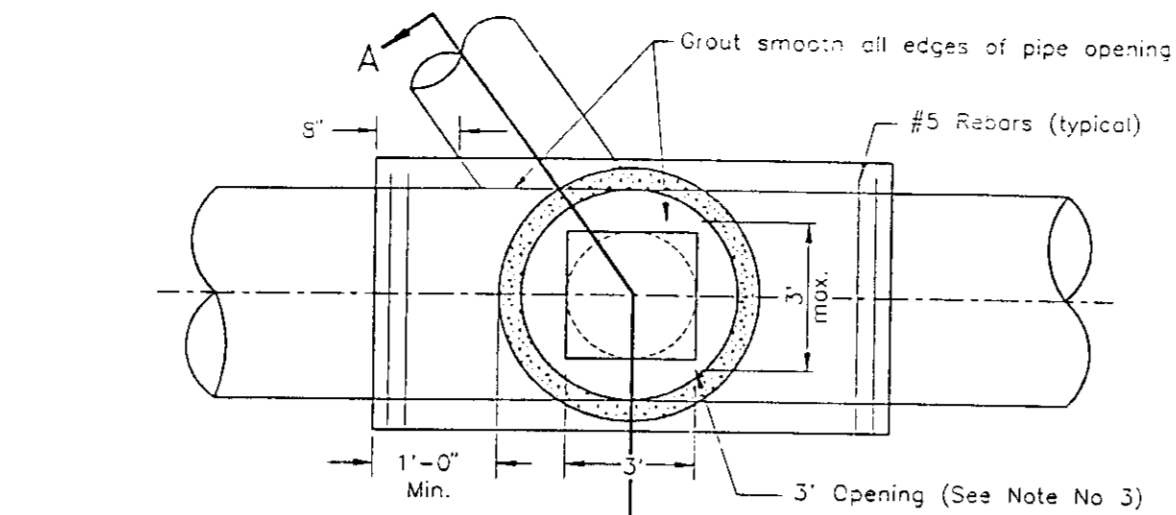
Note: Eccentric cones shall be used where specified on the plans. Joints may be either keyed or tongue and groove.

* NOTE: A 1'-6" concrete cone may be used if approved by the Director of Public Works.



FLAT SLAB TOP

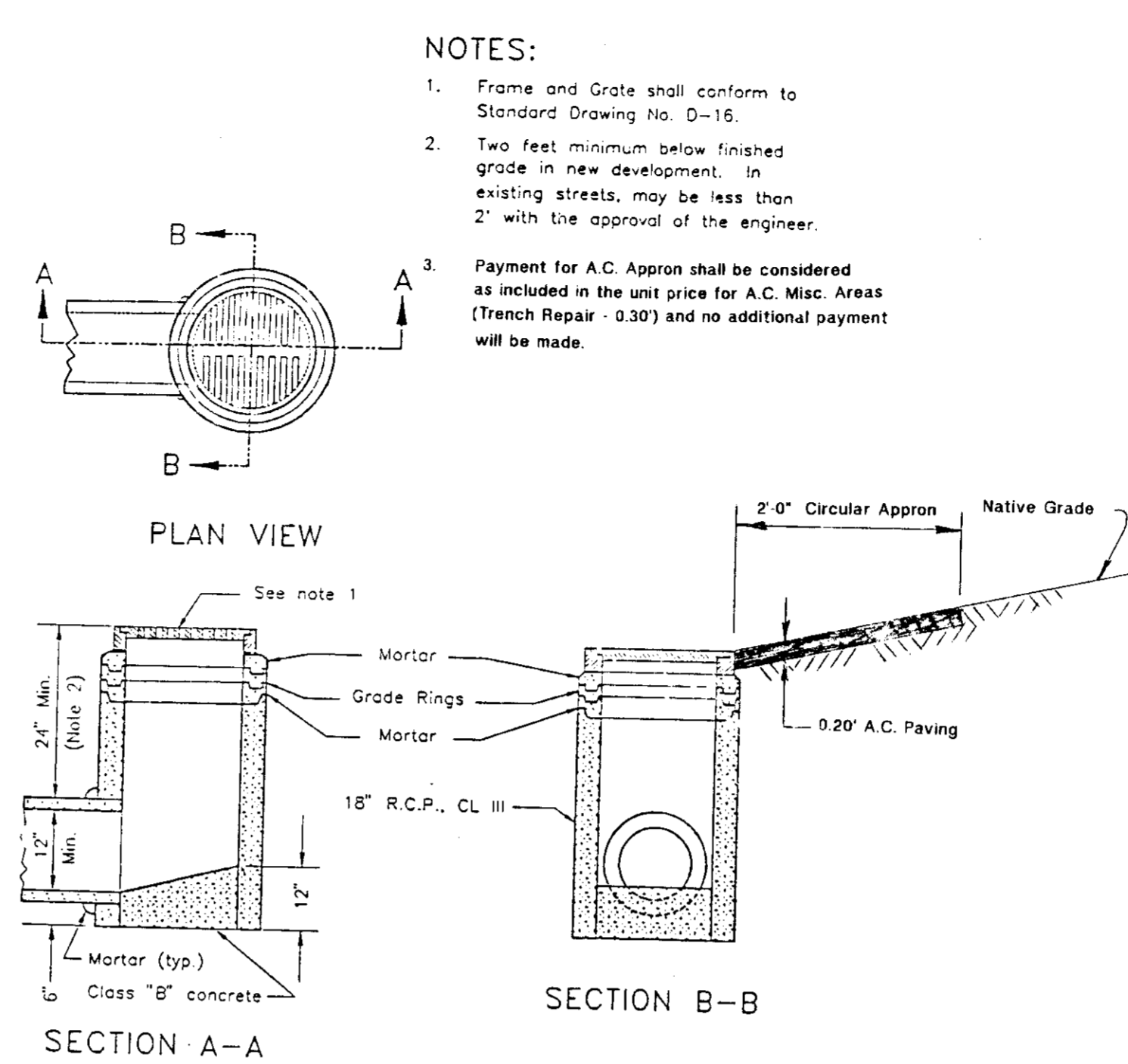
STANDARD STORM DRAIN MANHOLE



SECTION A-A PIPES LARGER THAN 36" DIA. SECTION A-A PIPES 24" TO 36" DIA.

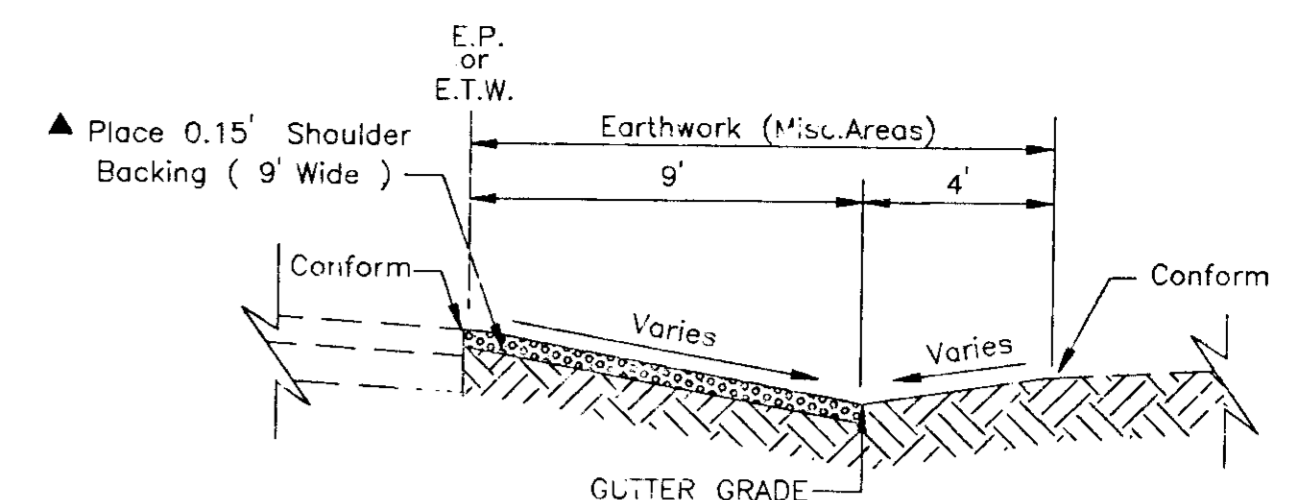
NOTES:
1. The foundation shall be a minimum of 5' for 44" O.D. pipe and smaller.
2. For pipe larger than 44" O.D., the foundation shall extend a minimum of 8' beyond each side of the pipe.
3. Opening to be 3' long x O.D. of pipe wide, up to 36" I.D. pipe. For pipes larger than 36" I.D., opening to be 36" diameter or square.

SADDLE-TYPE MANHOLE FOR PIPE 24" DIA. AND LARGER



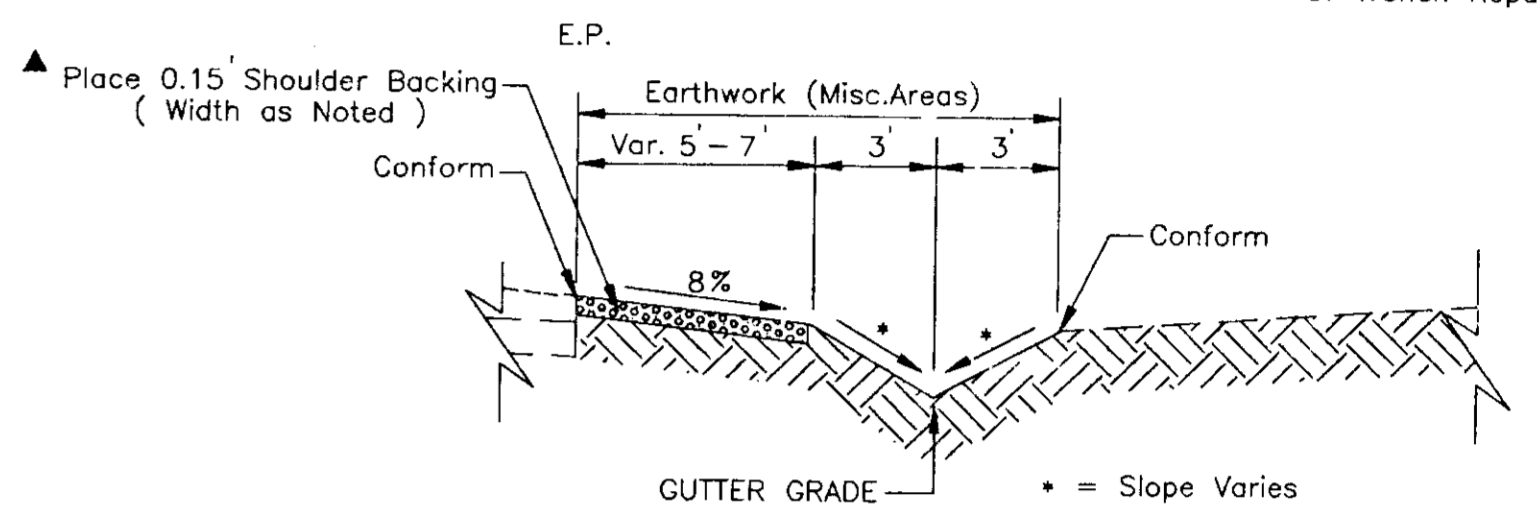
NOTES:
1. Frame and Grate shall conform to Standard Drawing No. D-16.
2. Two feet minimum below finished grade in new development. In existing streets, may be less than 2' with the approval of the engineer.
3. Payment for A.C. Apron shall be considered as included in the unit price for A.C. Misc. Areas (Trench Repair - 0.30) and no additional payment will be made.

18" STORM DRAIN INLET

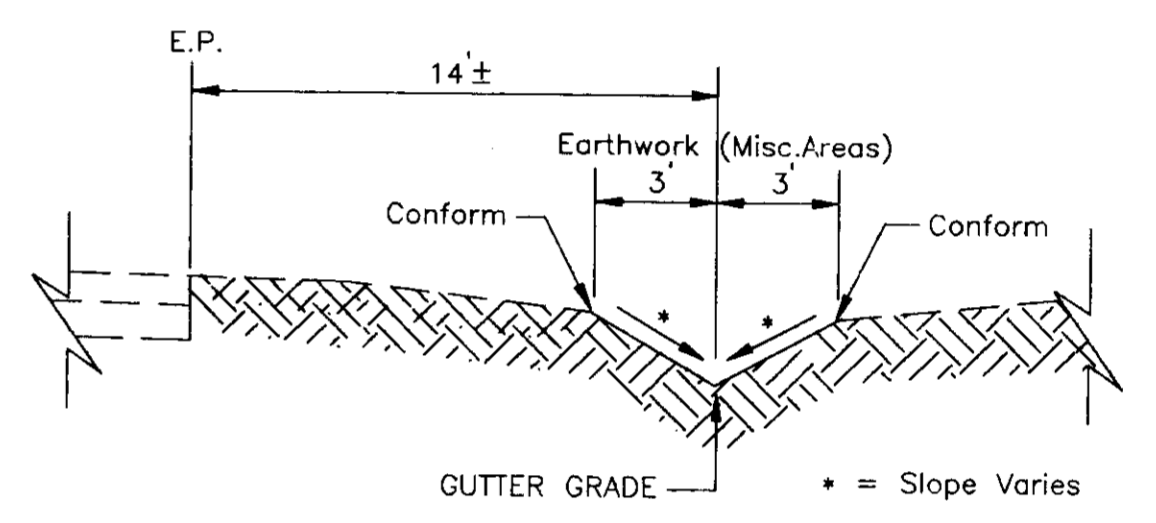


TYPICAL SECTION Sta. 1+00 to 4+00 (Right)

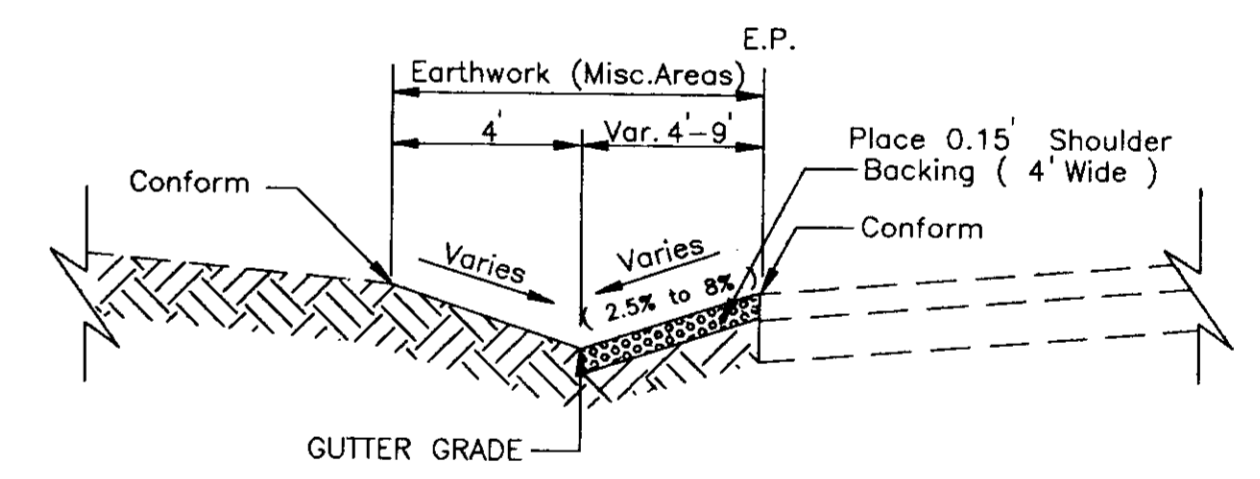
▲ Shoulder Backing Shall Be Deleted in Areas of Trench Repair.



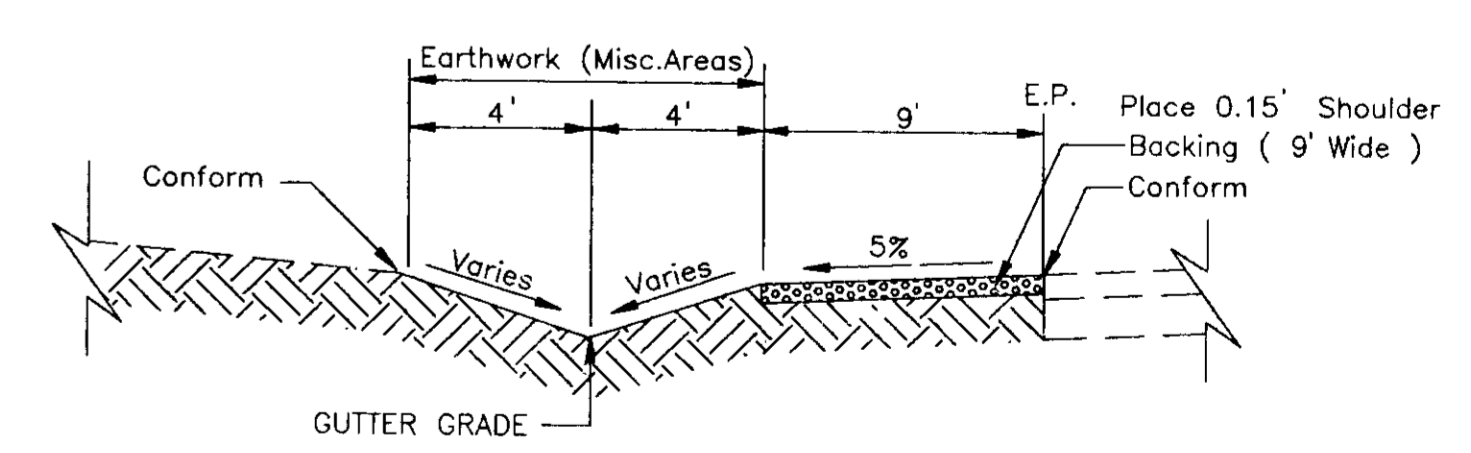
TYPICAL SECTION Sta. 4+25 to 9+80 (Right)



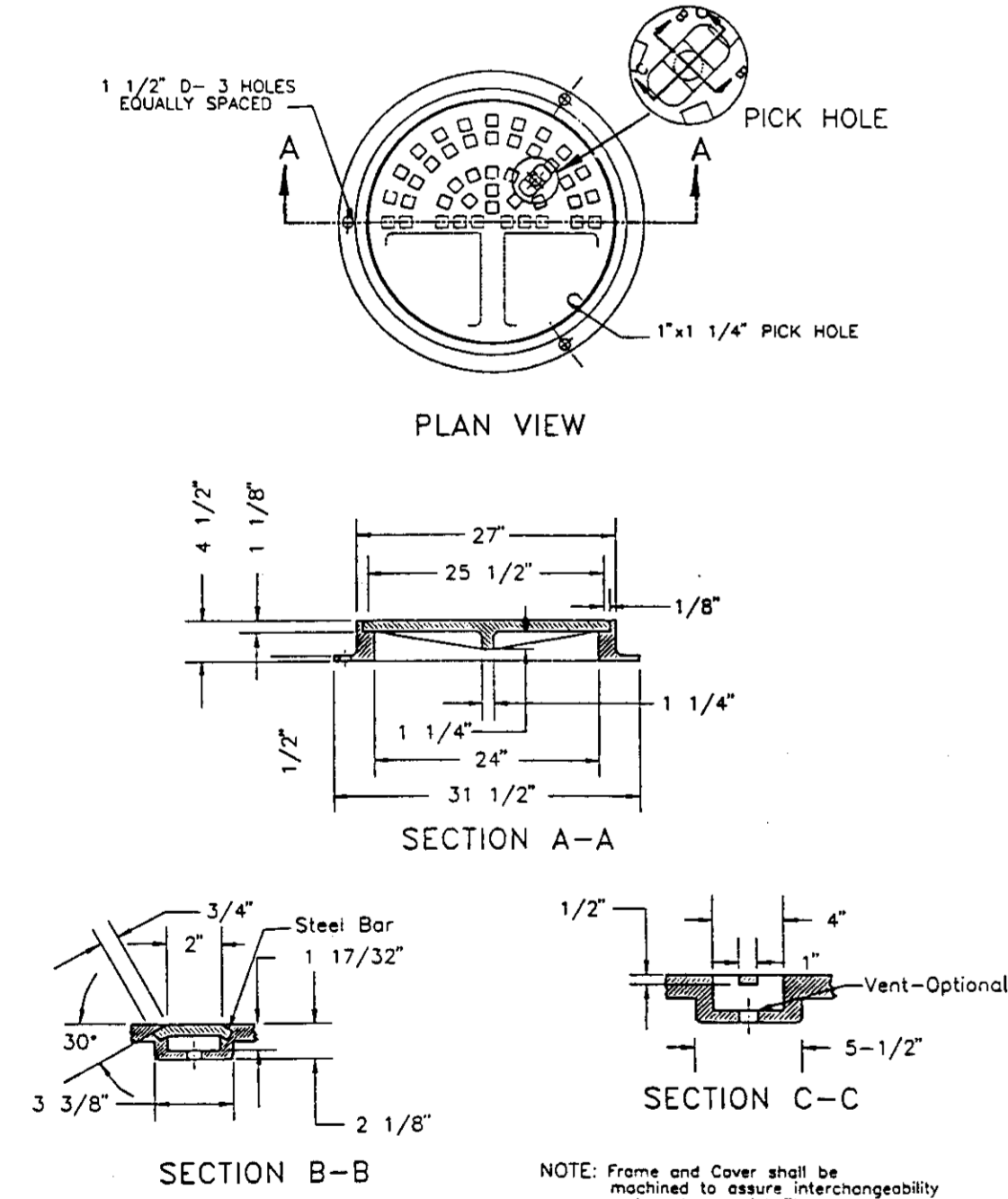
TYPICAL SECTION Sta. 11+50 to 16+89 (Right)



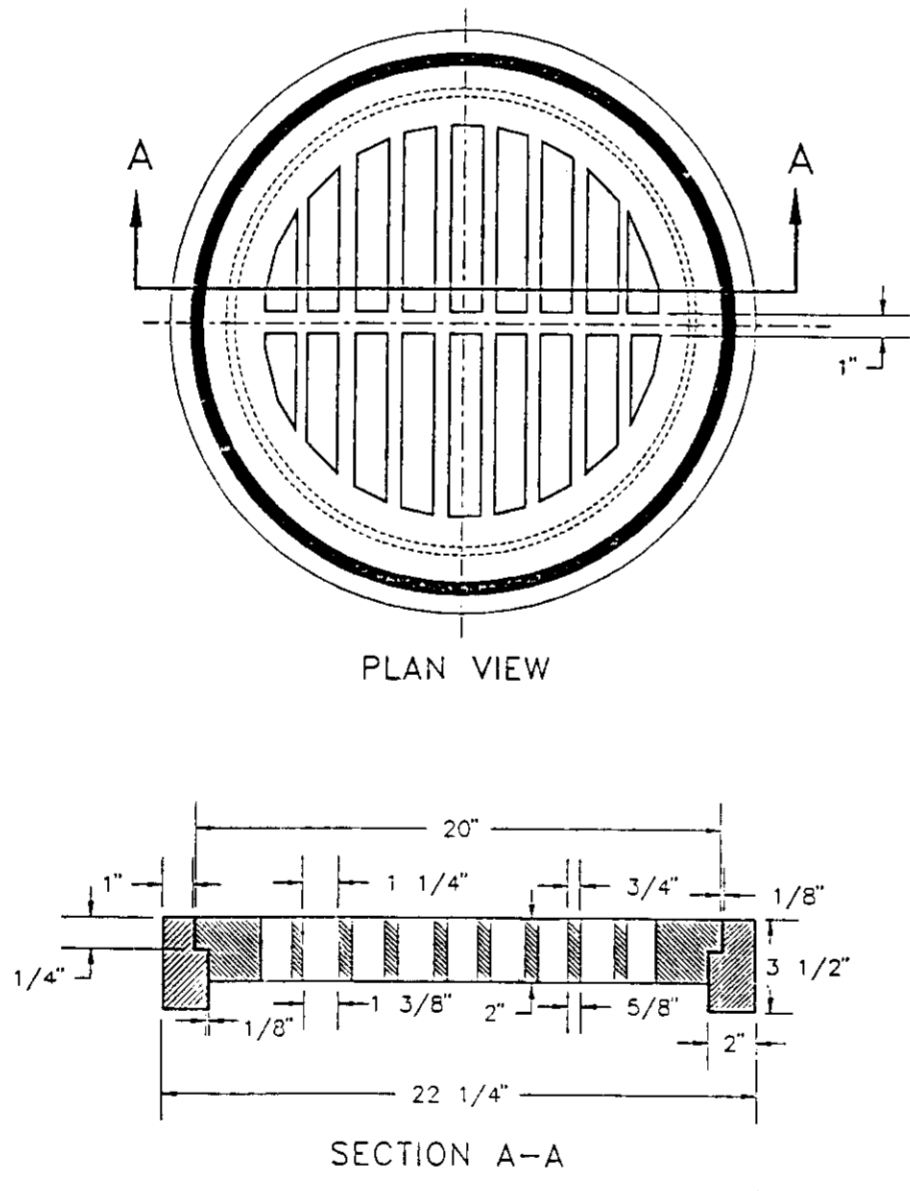
TYPICAL SECTION Sta. 1+00 to 4+42 (Left)



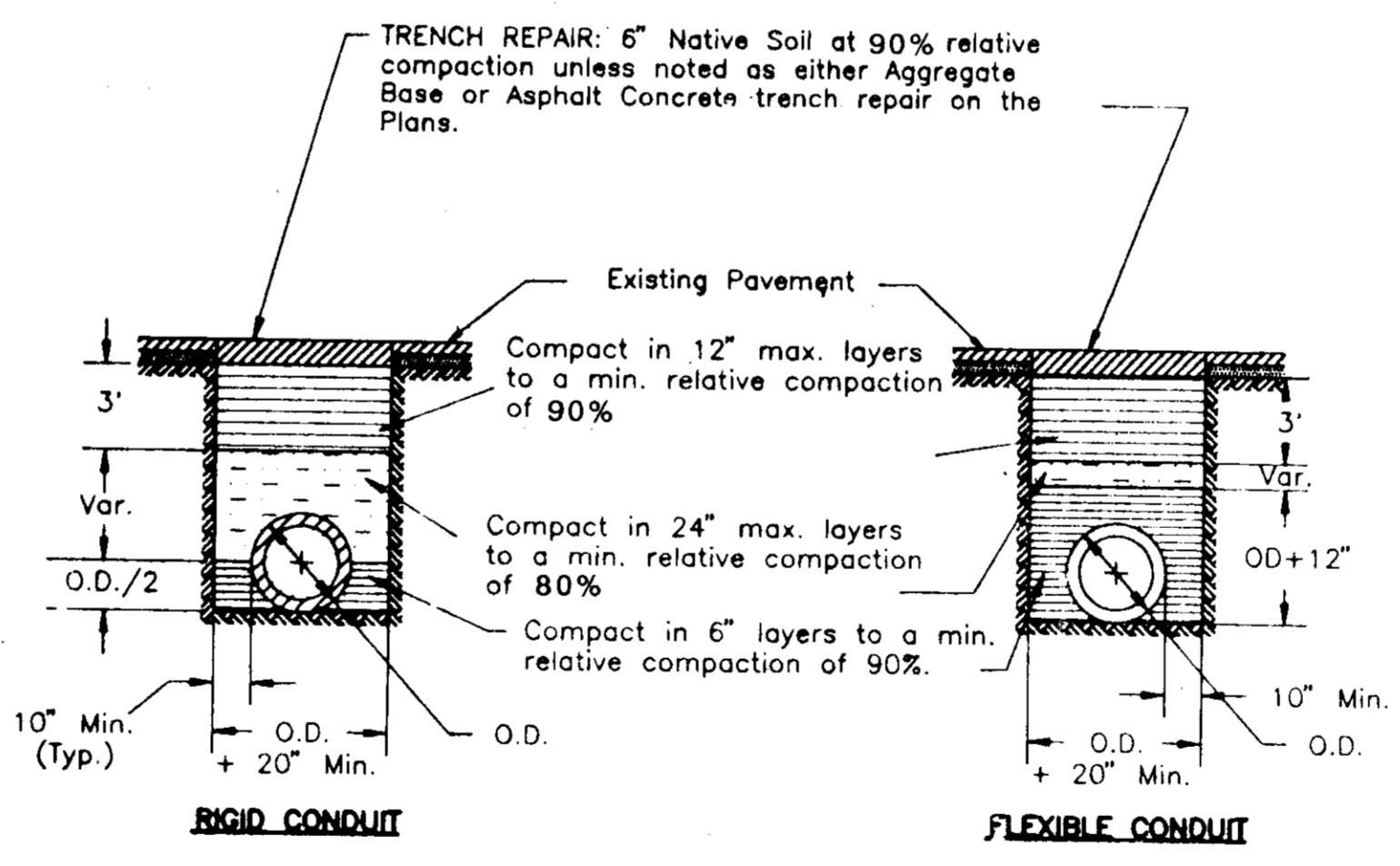
TYPICAL SECTION Sta. 9+00 to 12+20 (Left)



FRAME & COVER (MANHOLE)



FRAME & GRATE (18" STORM DRAIN INLET)

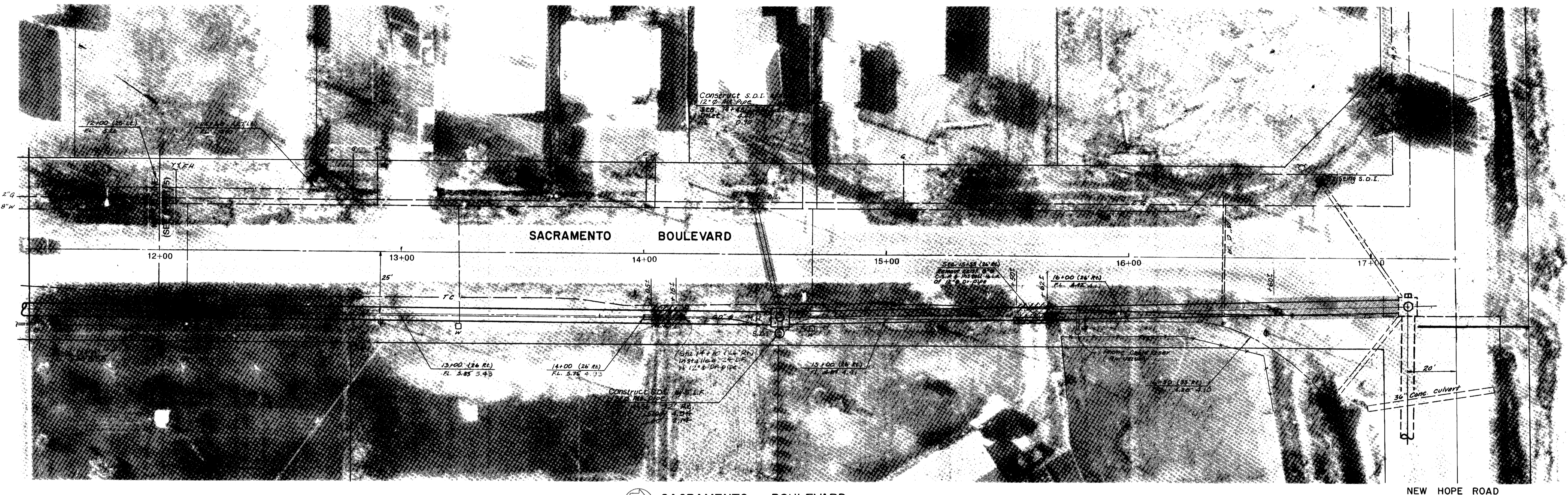


NOTES:
1. Relative compaction of materials shall be tested by the State of California, Dept. of Transportation Testing Manual, test methods No. California 216 or 231.
2. All existing pavement shall be neatly cut to line prior to trench excavation.

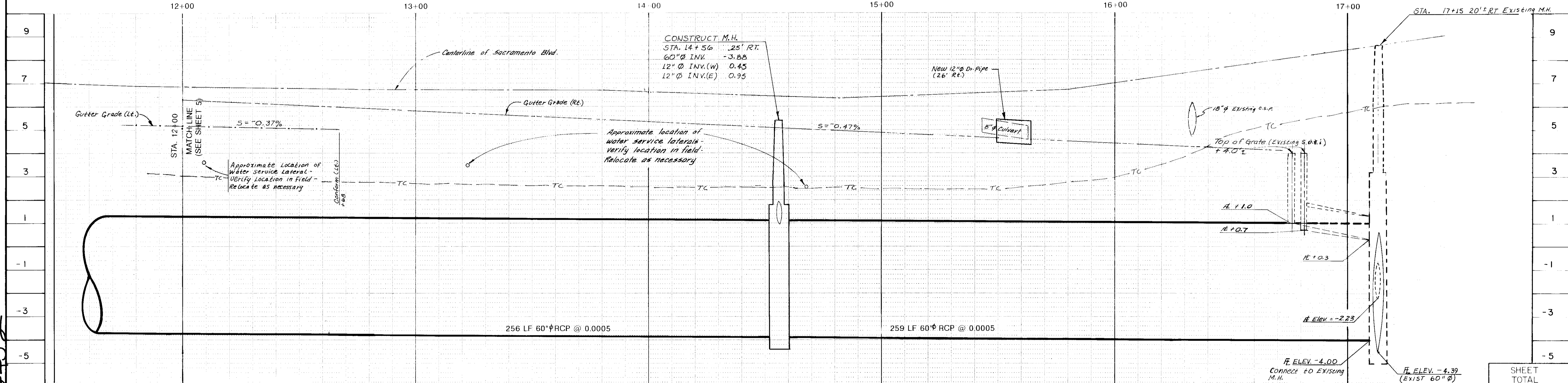
TYPICAL TRENCH BACKFILL

15785

REVISIONS NO. DATE BY DESCRIPTION	PROJECT ENGINEER <i>Dean D. Wilson</i> DATE 5/17/91 SENIOR ENGINEER <i>Mamad Alshai</i> DATE 5/19/91 APPROVAL RECOMMENDED <i>M.P.R.</i> DATE 5/14/91	COUNTY SERVICE AREA NO. 12 SAN JOAQUIN COUNTY, CALIFORNIA THORNTON DRAINAGE PROJECT PHASE 2	SACRAMENTO BLVD. CONSTRUCTION DETAILS	SHEET NO. 7 TOTAL SHEETS 8
ACAD FILE NAME DRAWER NO. C:\THORNTON\TYPSEC1	COUNTY OF SAN JOAQUIN			



SACRAMENTO BOULEVARD
 SCALE: 1"=20'



SUSHERS

Revisions		PROJECT ENGINEER	DATE
no.	date	description	

PROJECT ENGINEER <i>Dean J. Gilman</i>	DATE 5/7/91
SENIOR ENGINEER <i>Manuel Acuna</i>	DATE 5/3/91
APPROVAL RECOMMENDED <i>J.H. K.</i>	DATE 5/19/91

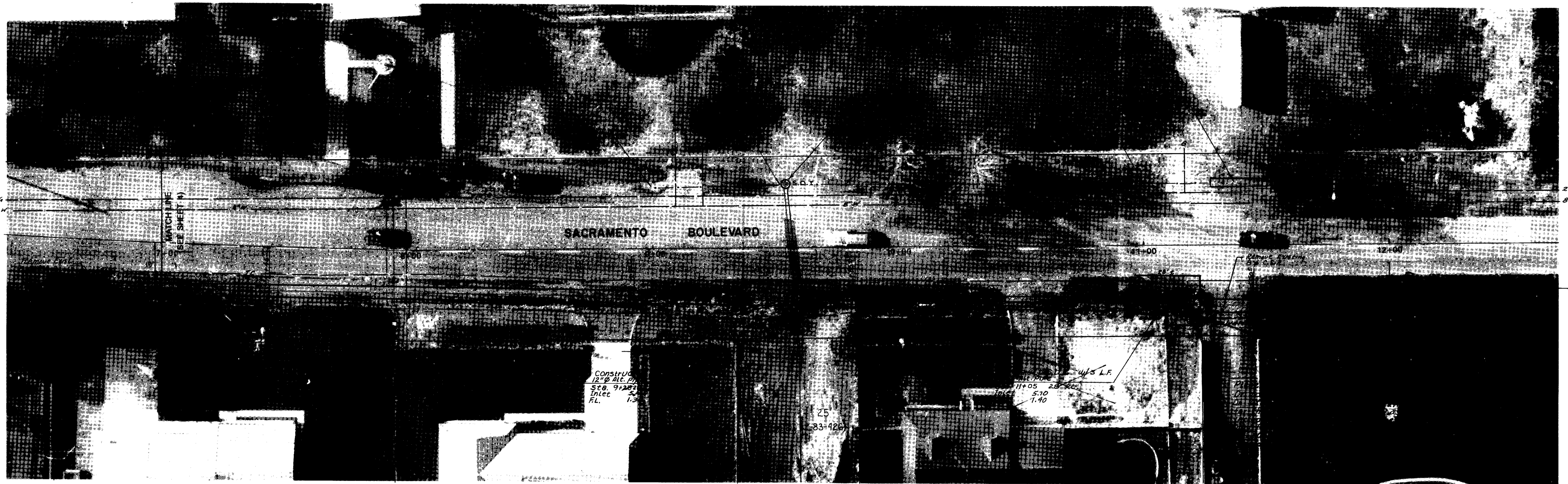
SCALE:	
Horiz. 1"=20'	
Vert. 1"=2'	

COUNTY OF SAN JOAQUIN

COUNTY SERVICE AREA NO. 12
 SAN JOAQUIN COUNTY, CALIFORNIA
**THORNTON DRAINAGE PROJECT
 PHASE 2**

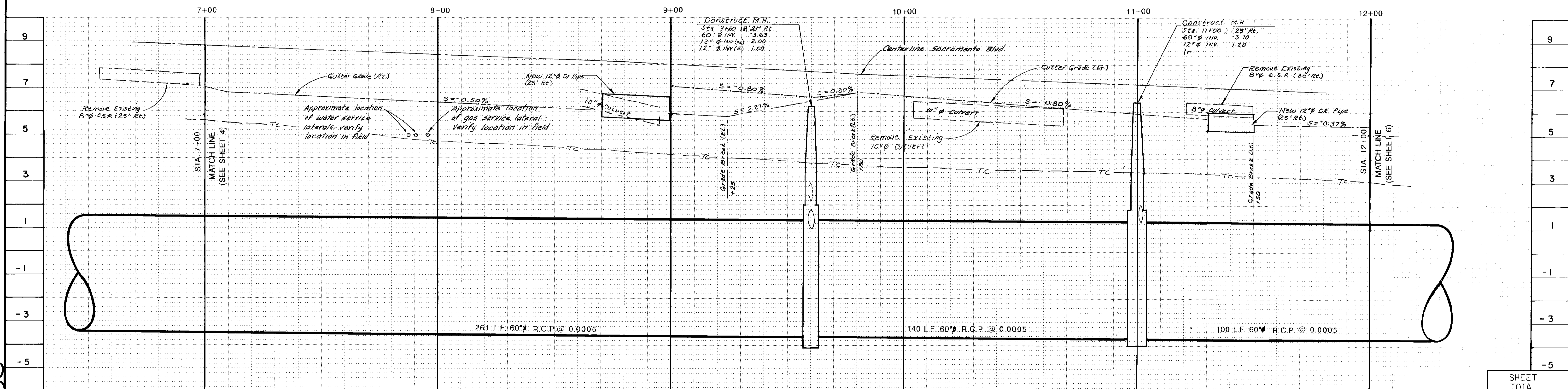
SACRAMENTO
 PLAN AND PROFILE
 STA. 12+00 TO STA. 17+15

SHEET TOTAL	
SHEET NO.	TOTAL SHEETS
6	8



SACRAMENTO BOULEVARD

SCALE: 1" = 20'



SU 2453

no.	date	by	description

PROJECT ENGINEER	DATE
<i>Dean J. Wilson</i>	5/7/91
SENIOR ENGINEER	DATE
<i>Manuel Solis</i>	5/8/91
APPROVAL RECOMMENDED	DATE
<i>M.H. P...</i>	5/9/91

SCALE:
Horiz. 1" = 20'
Vert. 1" = 2'

COUNTY OF SAN JOAQUIN

COUNTY SERVICE AREA NO. 12
SAN JOAQUIN COUNTY, CALIFORNIA
**THORNTON DRAINAGE PROJECT
PHASE 2**

SACRAMENTO BLVD.

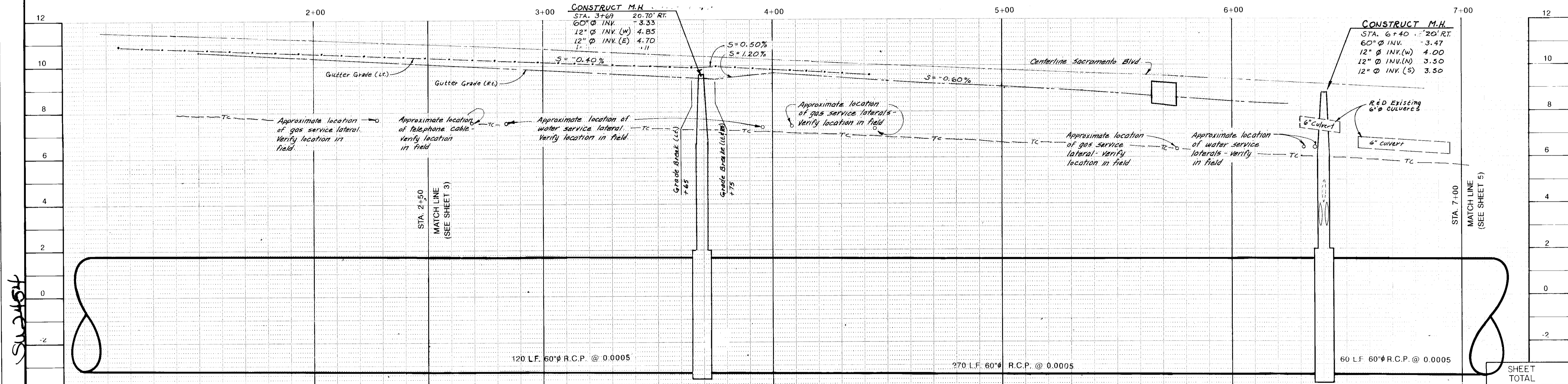
PLAN AND PROFILE
STA. 7+00 TO STA. 12+00

SHEET TOTAL

SHEET NO.	TOTAL SHEETS
5	8

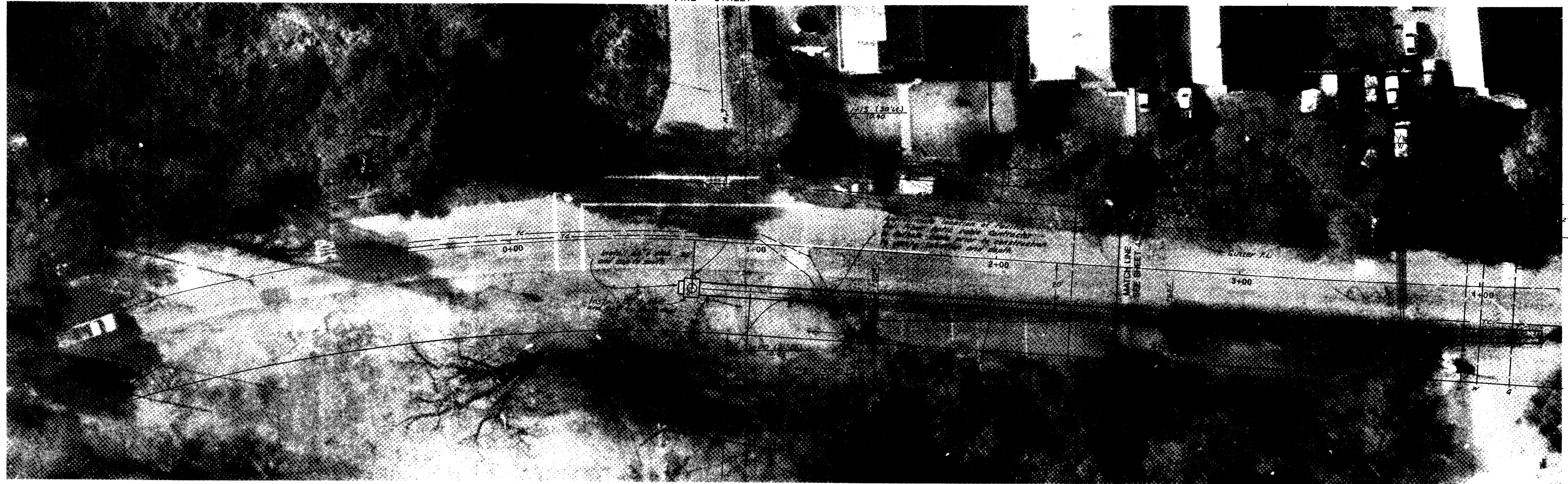


SACRAMENTO BOULEVARD
 SCALE: 1" = 20'



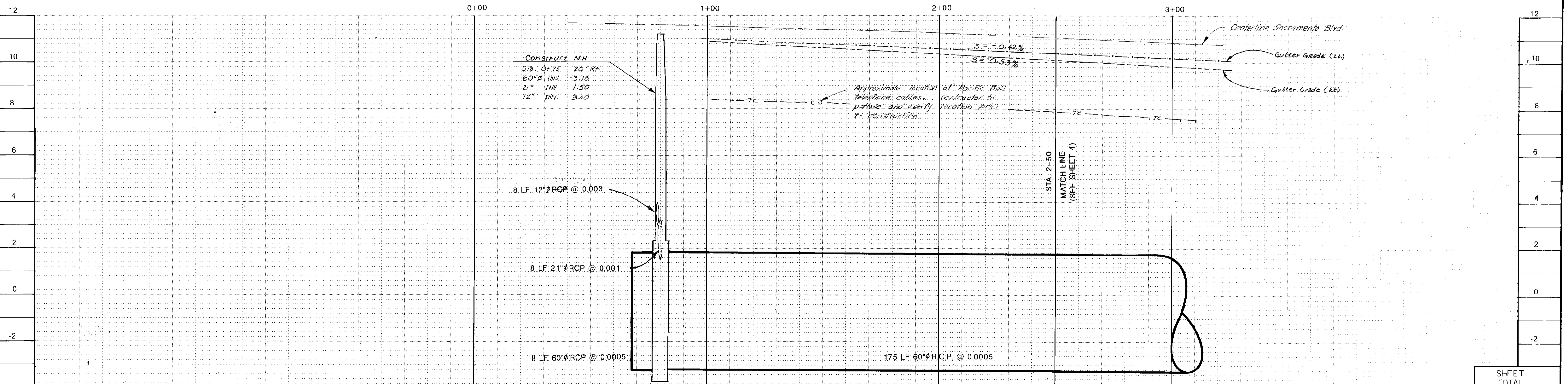
PROJECT ENGINEER <i>Dean G. Gilman</i>	DATE 5/7/91		SCALE: Horiz. 1"=20' Vert. 1"=2'	COUNTY OF SAN JOAQUIN	COUNTY SERVICE AREA NO. 12 SAN JOAQUIN COUNTY, CALIFORNIA THORNTON DRAINAGE PROJECT PHASE 2	SACRAMENTO BLVD. PLAN AND PROFILE STA 2+50 TO STA 7+00	SHEET NO. 4 TOTAL SHEETS 8
SENIOR ENGINEER <i>Harold Davis</i>	DATE 5/8/91	APPROVAL RECOMMENDED <i>M. J. L.</i>					
	DATE 5/7/91						

PINE STREET



SACRAMENTO BOULEVARD

SCALE: 1" = 20'



SU 2455

Revisions		PROJECT ENGINEER	DATE
no.	date	by	description

PROJECT ENGINEER <i>Kean M. McMan</i>	DATE 5/11/91
SENIOR ENGINEER <i>Manuel Lopez</i>	DATE 5/6/91
APPROVAL/RECOMMENDED <i>M. F. L.</i>	DATE 5/9/91

SCALE:
Horiz. 1"=20'
Vert. 1"=2'
COUNTY OF SAN JOAQUIN

COUNTY SERVICE AREA NO. 12
SAN JOAQUIN COUNTY, CALIFORNIA
**THORNTON DRAINAGE PROJECT
PHASE 2**

SHEET TOTAL	
SHEET NO.	TOTAL SHEETS
3	8

PI AN AND PROFILE
STA. 0+75 TO STA. 2+50



LEGEND

- 8" W --- Water Line & Size
- 2" G --- Gas Line & Size
- TC --- Telephone Cable
- ∅ Utility Pole
- ⊕ Storm Drain Inlet
- [Stippled Box] Trench Repair: 6" Class II Aggregate Base
- [Diagonal Lines Box] Trench Repair: 0.30' Asphalt Concrete
- [Horizontal Lines Box] Trench Repair: 0.70' Asphalt Concrete

GENERAL PLAN

SCALE: 1" = 200'

RECORD DRAW

SHEET 2

PROJECT ENGINEER	DATE
<i>Dean G. Gilman</i>	5/7/91
SENIOR ENGINEER	DATE
<i>Manuel Lopez</i>	5/6/91
APPROVAL RECOMMENDED	DATE
<i>M.A.</i>	5/11/91

COUNTY OF SAN JOAQUIN

COUNTY SERVICE AREA NO. 12
 SAN JOAQUIN COUNTY, CALIFORNIA
**THORNTON DRAINAGE PROJECT
 PHASE 2**

SACRAMENTO BLVD.
GENERAL PLAN & NOTES

SHEET NO.	TOTAL SHEETS
2	8

COUNTY OF SAN JOAQUIN
 DEPARTMENT OF PUBLIC WORKS

STOCKTON, CALIFORNIA

PROJECT PLANS FOR

THORNTON DRAINAGE PROJECT
 PHASE 2

COUNTY OF SAN JOAQUIN

Submitted May 9 1991

Eugene B. Delucchi
 EUGENE B. DELUCCHI R.C.E. 15329
 Chief Deputy Director of Public Works



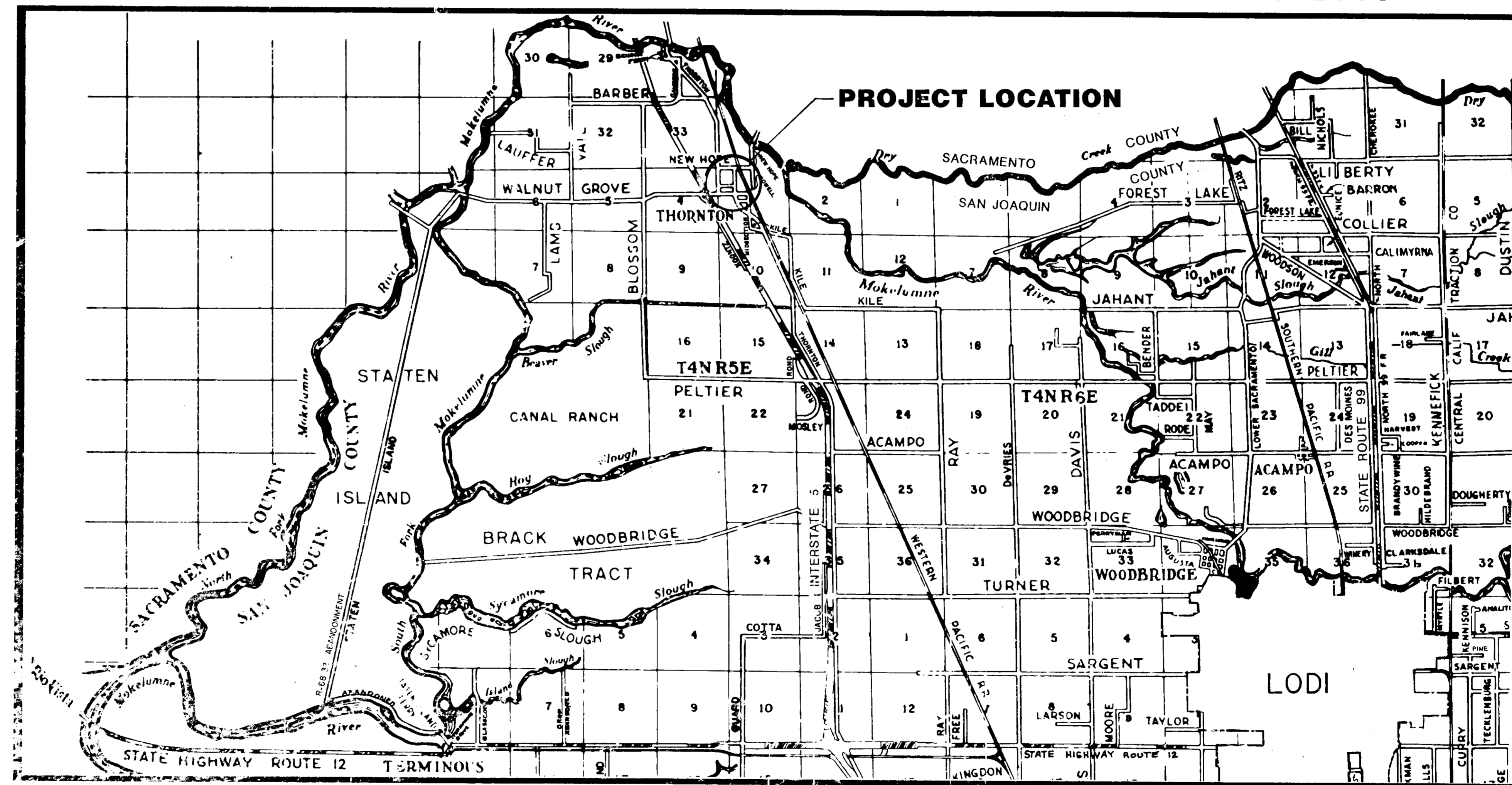
INDEX OF SHEETS

SHEET NO.	DESCRIPTION
1	Title Sheet
2	General Plan & Notes
3	Plan & Profile
4	Plan & Profile
5	Plan & Profile
6	Plan & Profile
7	Construction Details
8	Construction Notes

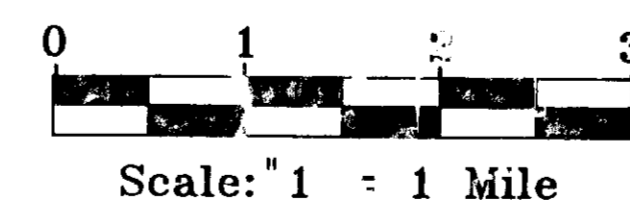
- ABBREVIATIONS -

A.B.	=	Aggregate Base
ALT.	=	Alternative
A.C.	=	Asphalt Concrete
A.C.P.	=	Asbestos Cement Pipe
A.S.	=	Aggregate Subbase
B.T. CD.	=	Bituminous Coated
C.L.	=	Center Line
C.P.	=	Concrete Pipe
CONST.	=	Construct/Construction
C.S.P.	=	Corrugated Steel Pipe
C.S.P.A.	=	Corrugated Steel Pipe Arch
D.I.	=	Drainage Inlet
D.P.	=	Driveway
E.P.	=	Edge of Pavement
E.T.W.	=	Edge of Traveled Way
F.L.	=	Flow Line
GALV.	=	Galvanized
L.F.	=	Linear Feet
M.H.	=	Manhole
N.R.C.P.	=	Non-Reinforced Concrete Pipe
O.G.	=	Original Ground
P.C.C.	=	Portland Cement Concrete
PEN.TR.	=	Penetration Treatment
P.L.	=	Property Line
P.M.S.	=	Plant Mixed Surfacing
R.C.P.	=	Reinforced Concrete Pipe
R. & D.	=	Remove and Dispose
R. & S.	=	Remove and Salvage
R. / W.	=	Right of Way
S.-DR.	=	Side Drain
S.D.I.	=	Storm Drain Inlet
S.P.	=	Standard Plans
TC	=	Telephone Cable
TYP.	=	Typical
W.	=	Walkway
X-DR.	=	Cross Drain

TO BE SUPPLEMENTED BY STANDARD PLANS DATED JANUARY 1988



PROJECT LOCATION MAP



NOTE:
 The Contractor shall possess a Class A Contractor's
 Licence at the time this contract is awarded

RECORD DRAWING
 Date: 9/27/91
 By: [Signature]

LS 245

NO.	DESCRIPTION	DRWN BY	CHK BY	APP BY	DATE
1	Project Engineer				
2	Senior Engineer				
3	Checker				
4	Project Manager				
5	Drawn				
6	Checked				
7	Approved				
8	Project Manager				