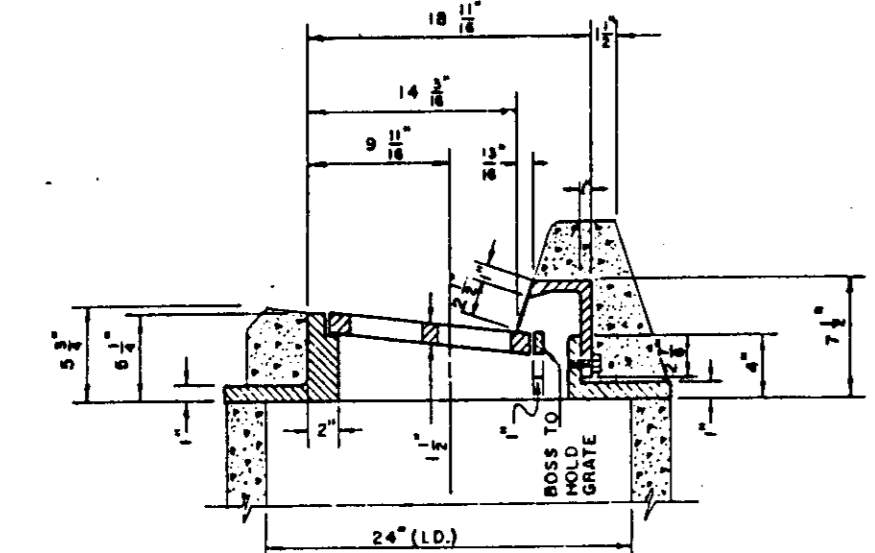


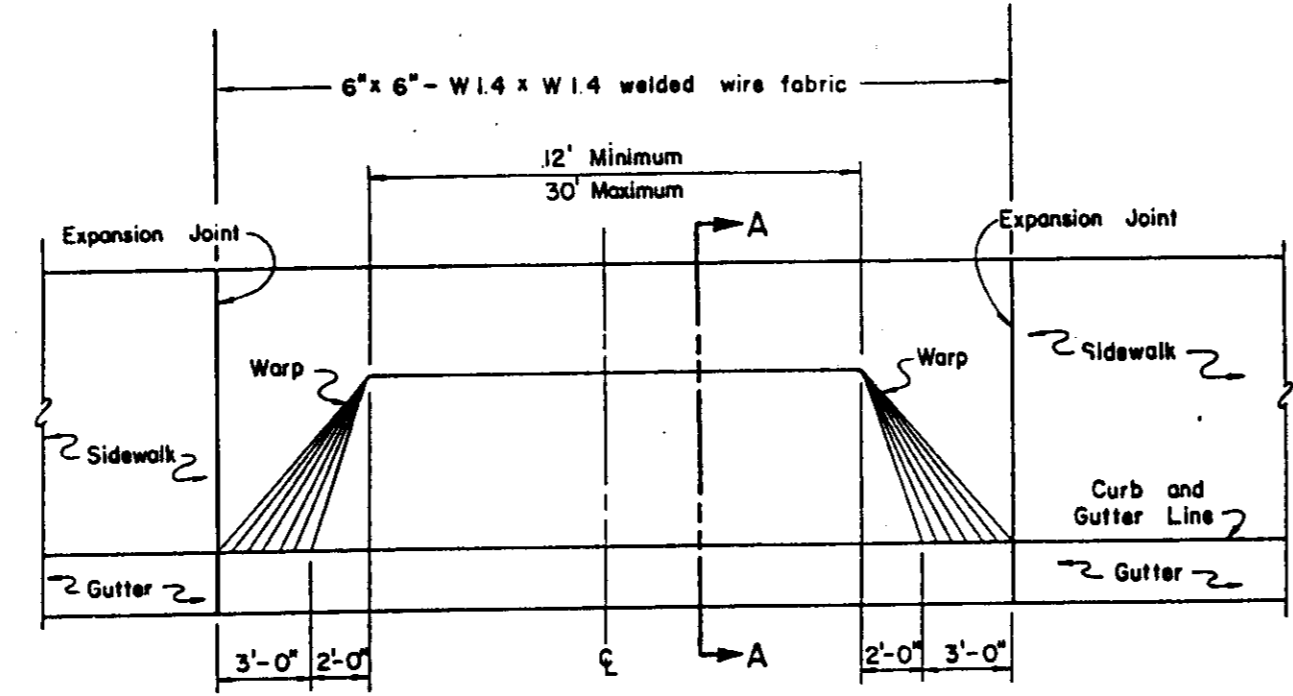
PLAN

SECTION A-A
 NOTES: 1. Irving type grate may be used as alternate.
 2. Grate shall be fastened to frame with 1/2" x 2" heat-treated chain.

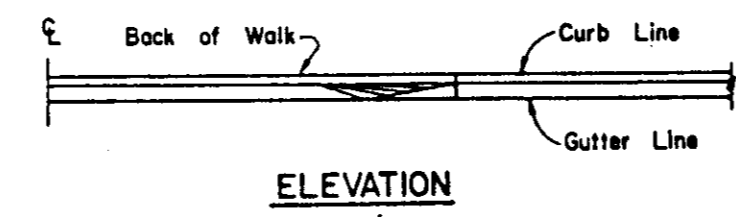


SECTION B-B

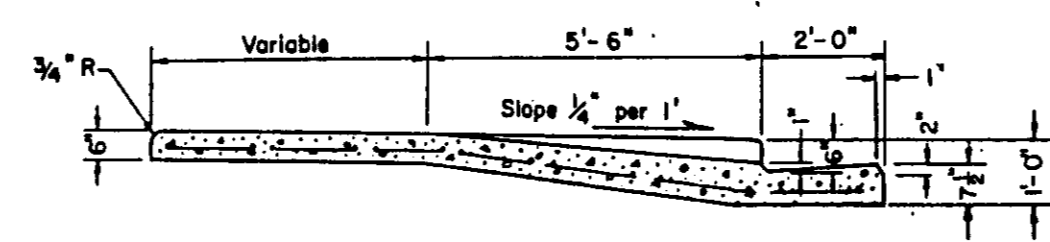
1 C-11 STORM DRAIN INLET FRAME AND GRATE N.T.S.



PLAN

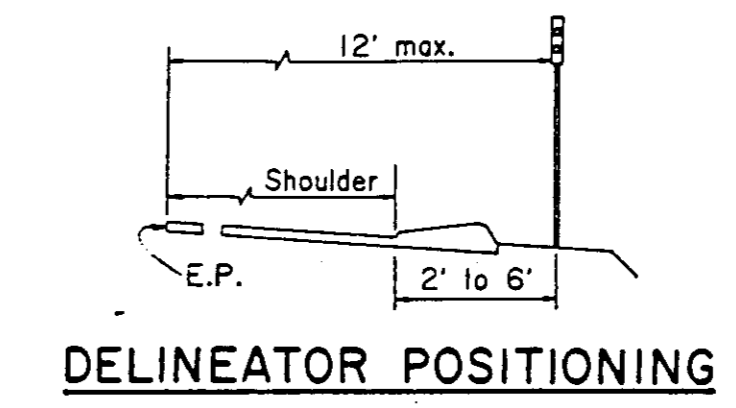


ELEVATION

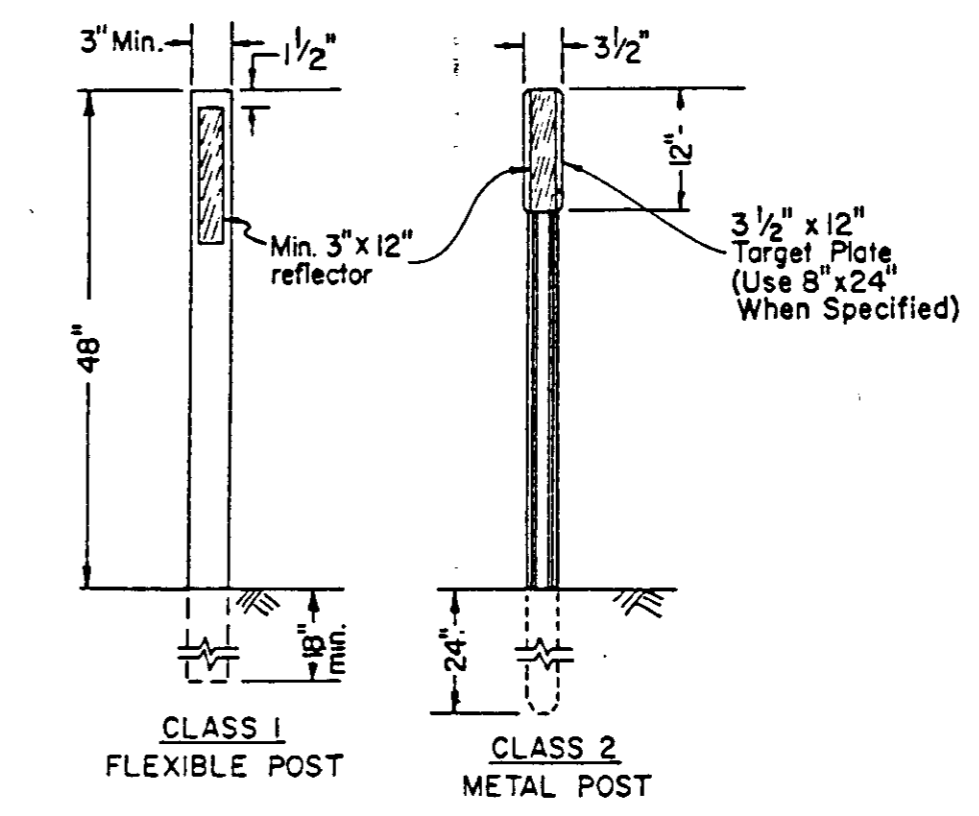


SECTION A-A

3 C-11 DRIVEWAY N.T.S.

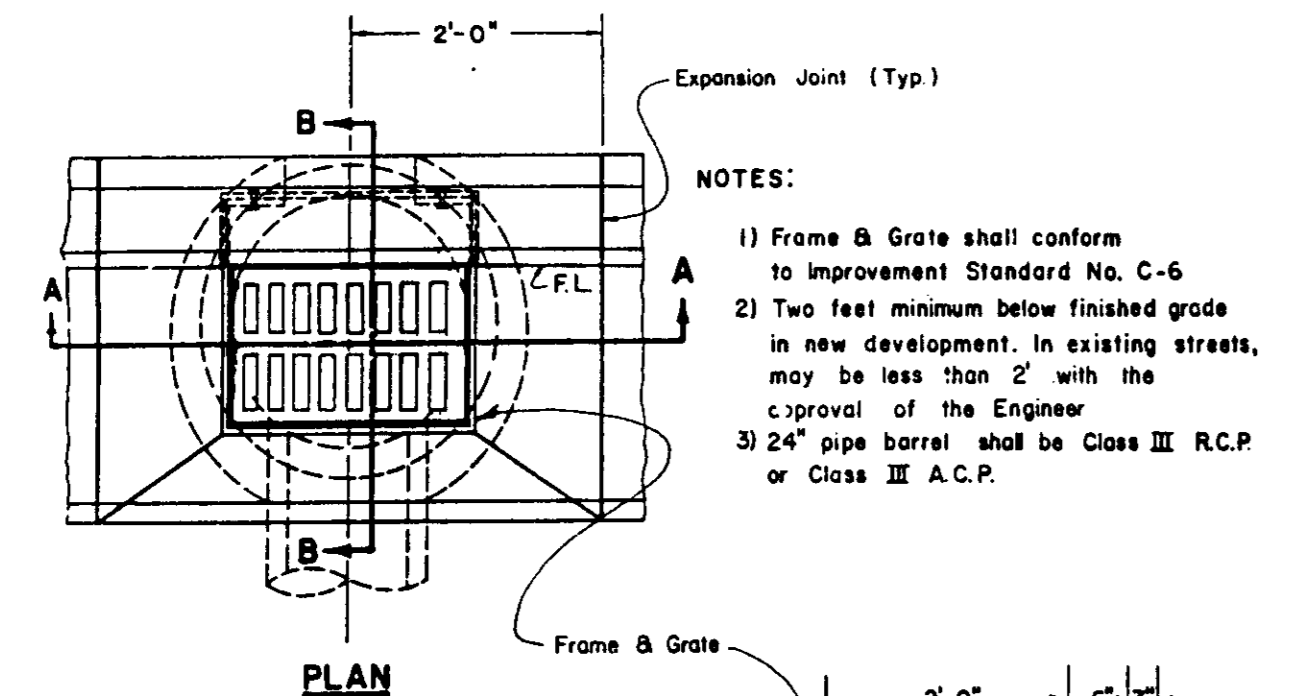


DELINEATOR POSITIONING



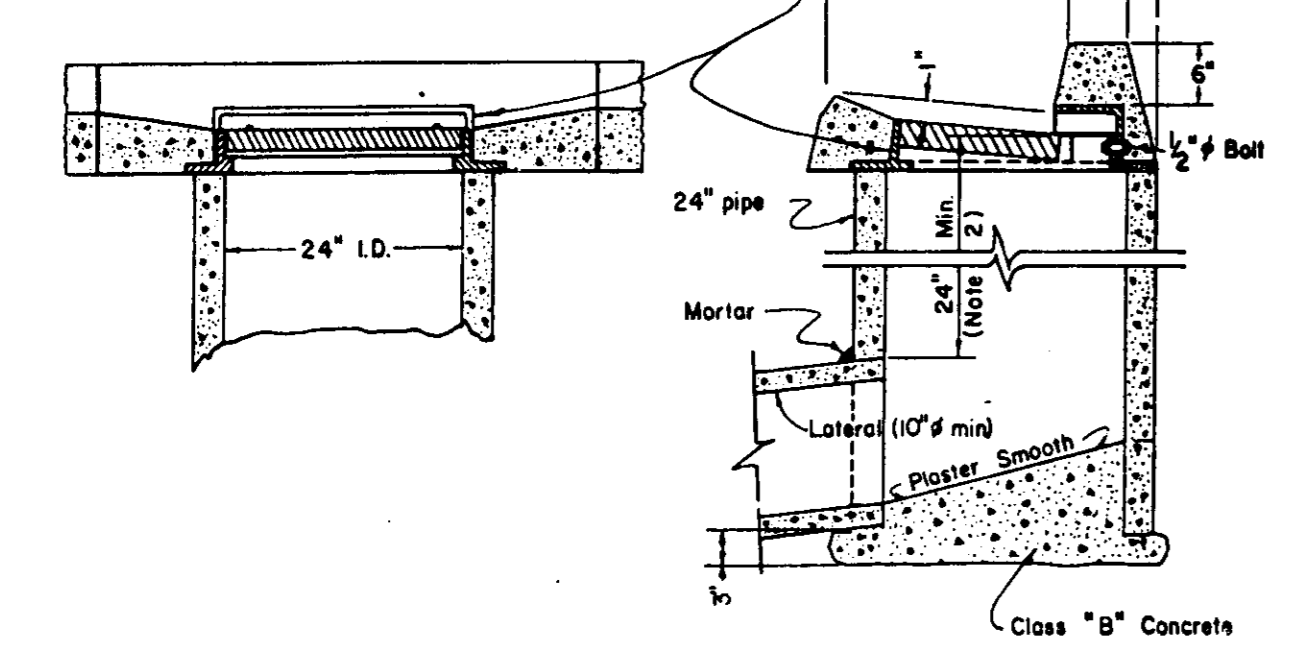
DELINEATORS

5 C-11 TYPE F-1 DELINEATOR N.T.S.



PLAN

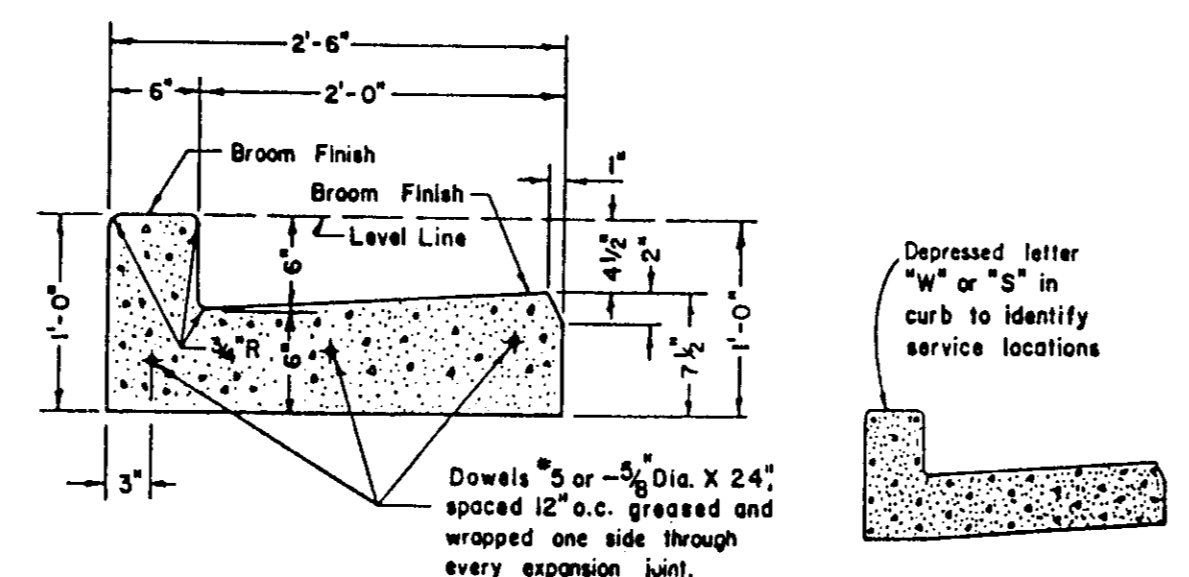
NOTES:
 1) Frame & Grate shall conform to improvement Standard No. C-6
 2) Two feet minimum below finished grade in new development. In existing streets, may be less than 2' with the approval of the Engineer.
 3) 24" pipe barrel shall be Class III R.C.P. or Class III A.C.P.



SECTION A-A

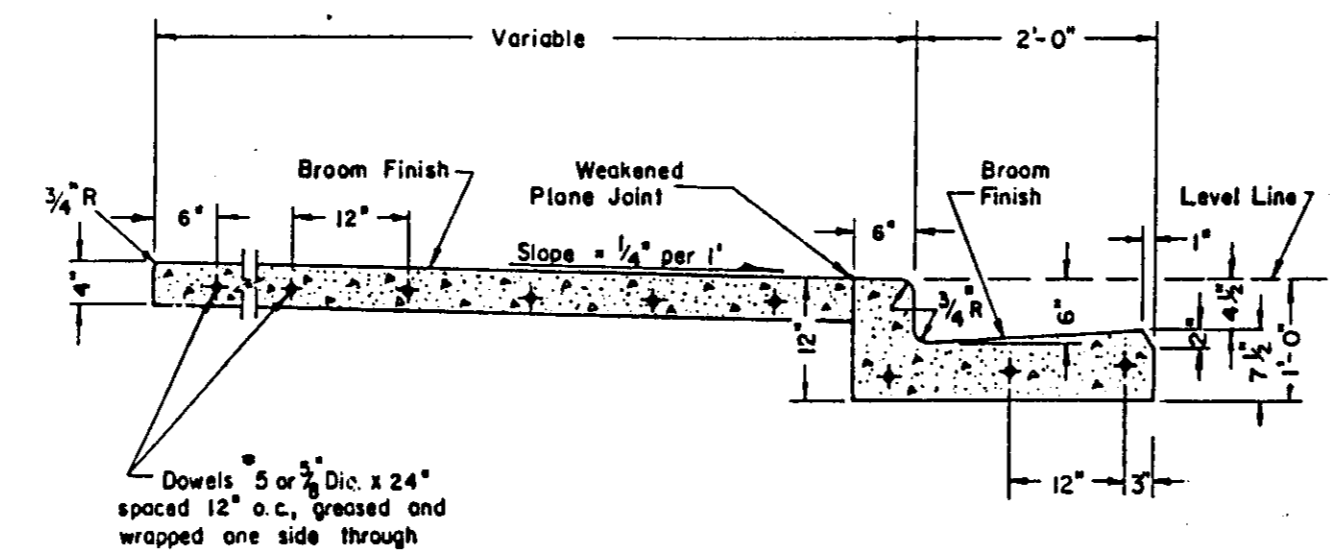
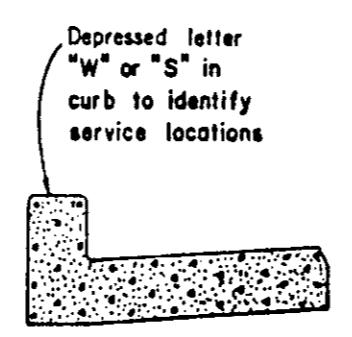
SECTION B-B

2 C-11 STORM DRAIN INLET N.T.S.



CURB & GUTTER

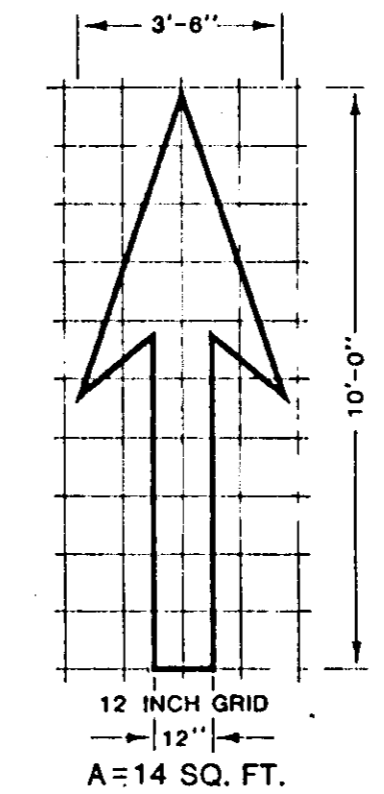
W - Water line
 S - Sanitary Sewer line



CURB, GUTTER & SIDEWALK

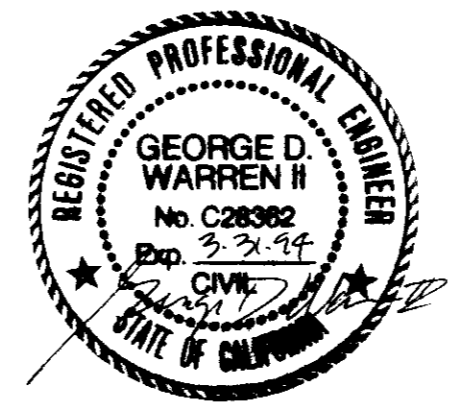
NOTES:
 1. Construct expansion joints @ 20' maximum and at returns, around light poles, hydrants and other fixed objects at sidewalk.
 2. Transverse weakened plane joints shall be constructed @ 12' maximum intervals.

4 C-11 CURB, GUTTER AND SIDEWALK N.T.S.



TYPE 1 ARROW

6 C-11 TYPE 1 ARROW N.T.S.

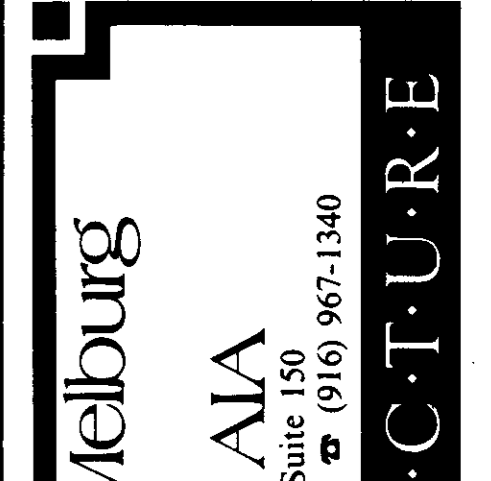
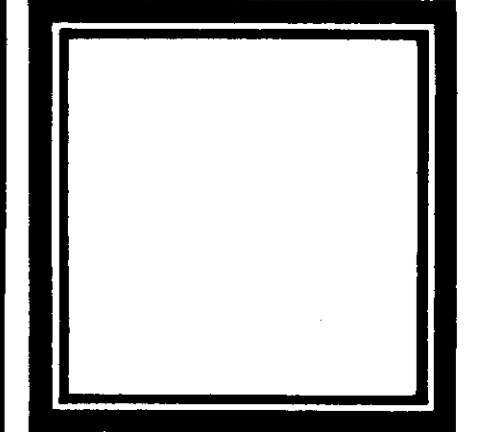
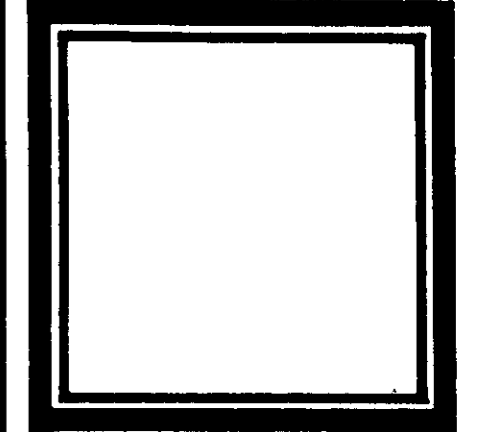


WCE
 WARREN CONSULTING ENGINEERS
 5777 MADISON AVENUE, SUITE 1200
 SACRAMENTO, CA 95841 • (916) 348-8225

AS-BUILTS 12-18-92
 Beng D. Warren R/E 28382

DETAILS

NICHOLS, MELBURG & ASSOCIATES, INC. AND ASSOCIATES DO NOT WARRANT THE ACCURACY OF THE INFORMATION CONTAINED HEREIN. THE INFORMATION IS PROVIDED FOR YOUR INFORMATION ONLY AND IS NOT TO BE USED FOR ANY OTHER PURPOSE. THE USER SHALL BE RESPONSIBLE FOR OBTAINING ALL NECESSARY PERMITS AND SPECIFICATIONS FROM THE APPROPRIATE AGENCIES AND SPECIFICATIONS IF THEY ARE USED IN WHOLE OR IN PART AT ANY OTHER SITE.



Nichols Melburg
 Rossetto AIA
 7844 Madison Ave, Suite 150
 Fair Oaks, California 95628 (916) 967-1340

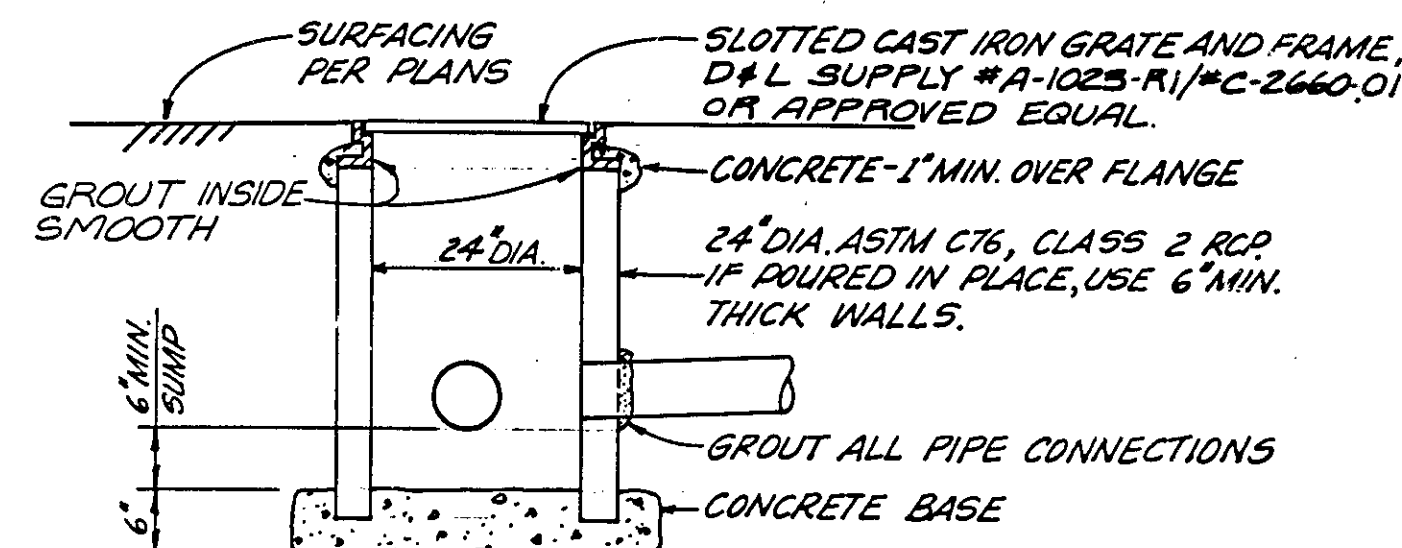
DETAILS
 MANTECA
 2ND & 3RD WARD
 AND
 MANTECA CA STAKE
 303B

DATE	1/18/01
BY	AS SHOWN
CHECKED	AUGUST B. PETERSON
DESIGNED	GW
SCALE	N/A

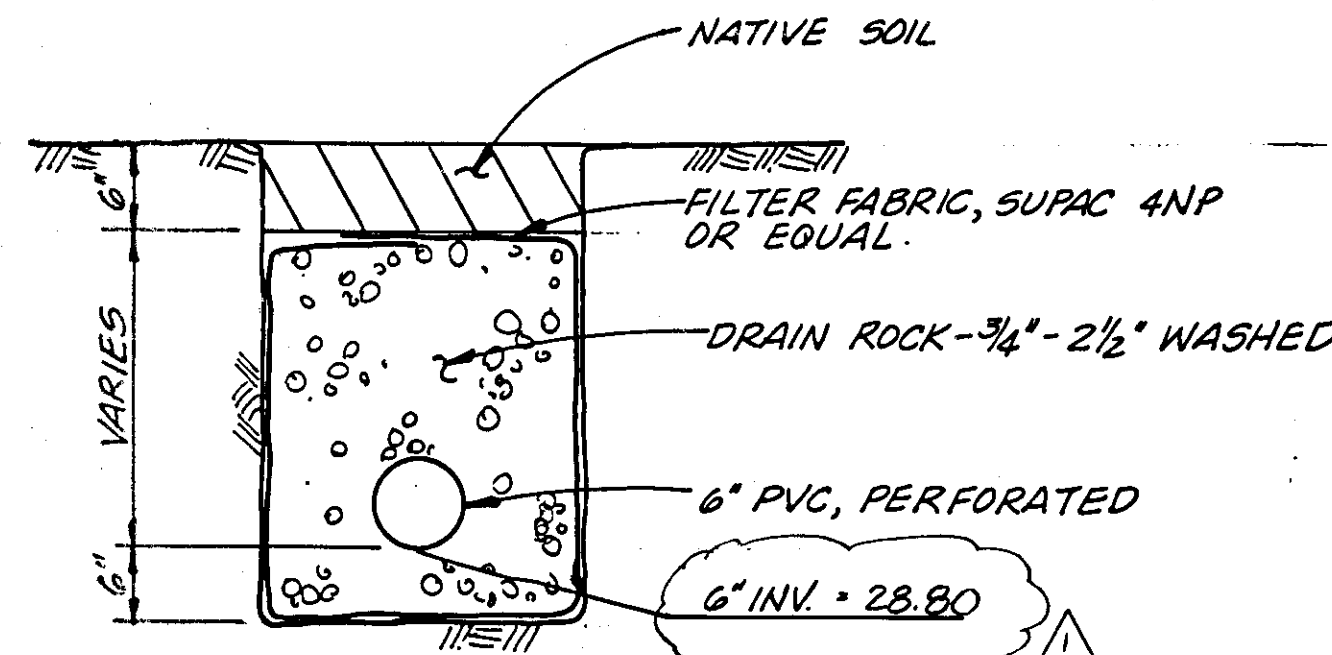
C-11

THIS SHEET PART OF ADDENDUM #2

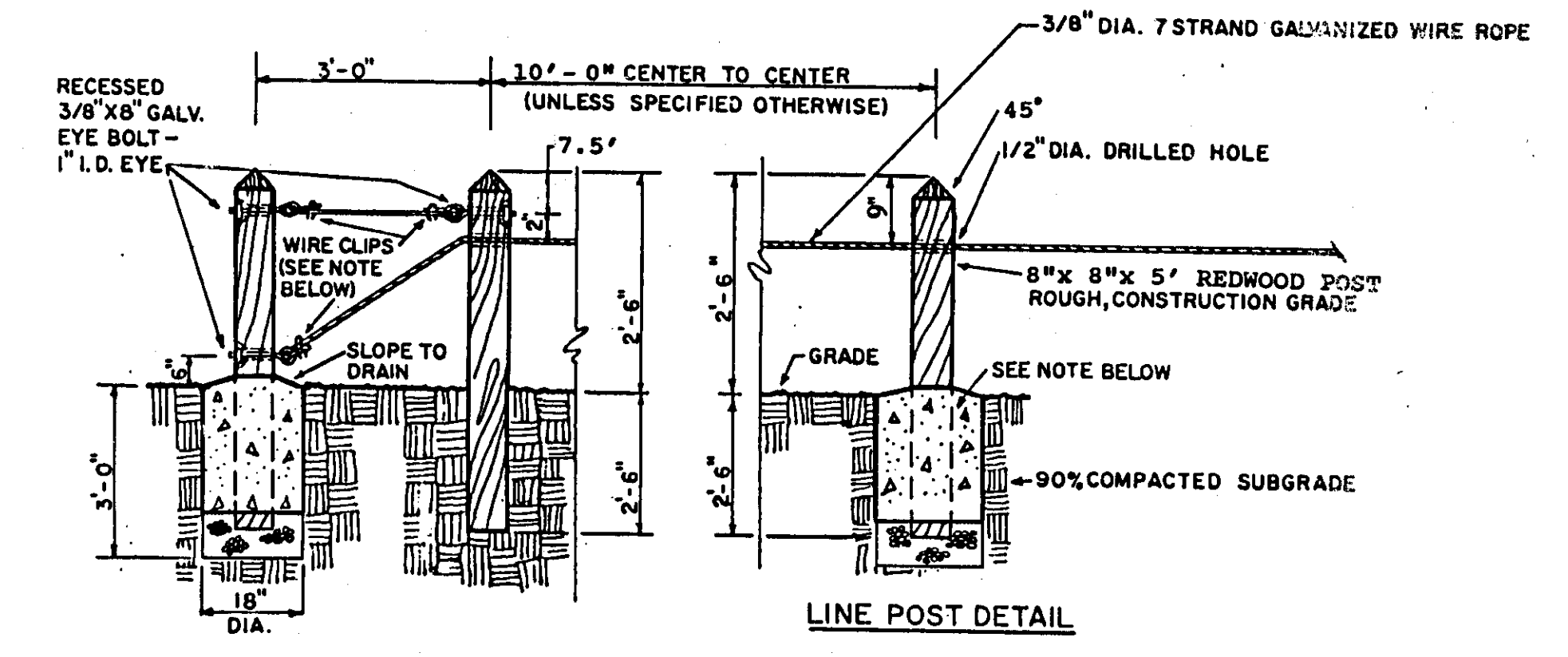
BRUNING P184-0111 SU 2599



1 DROP INLET
C-10 N.T.S.

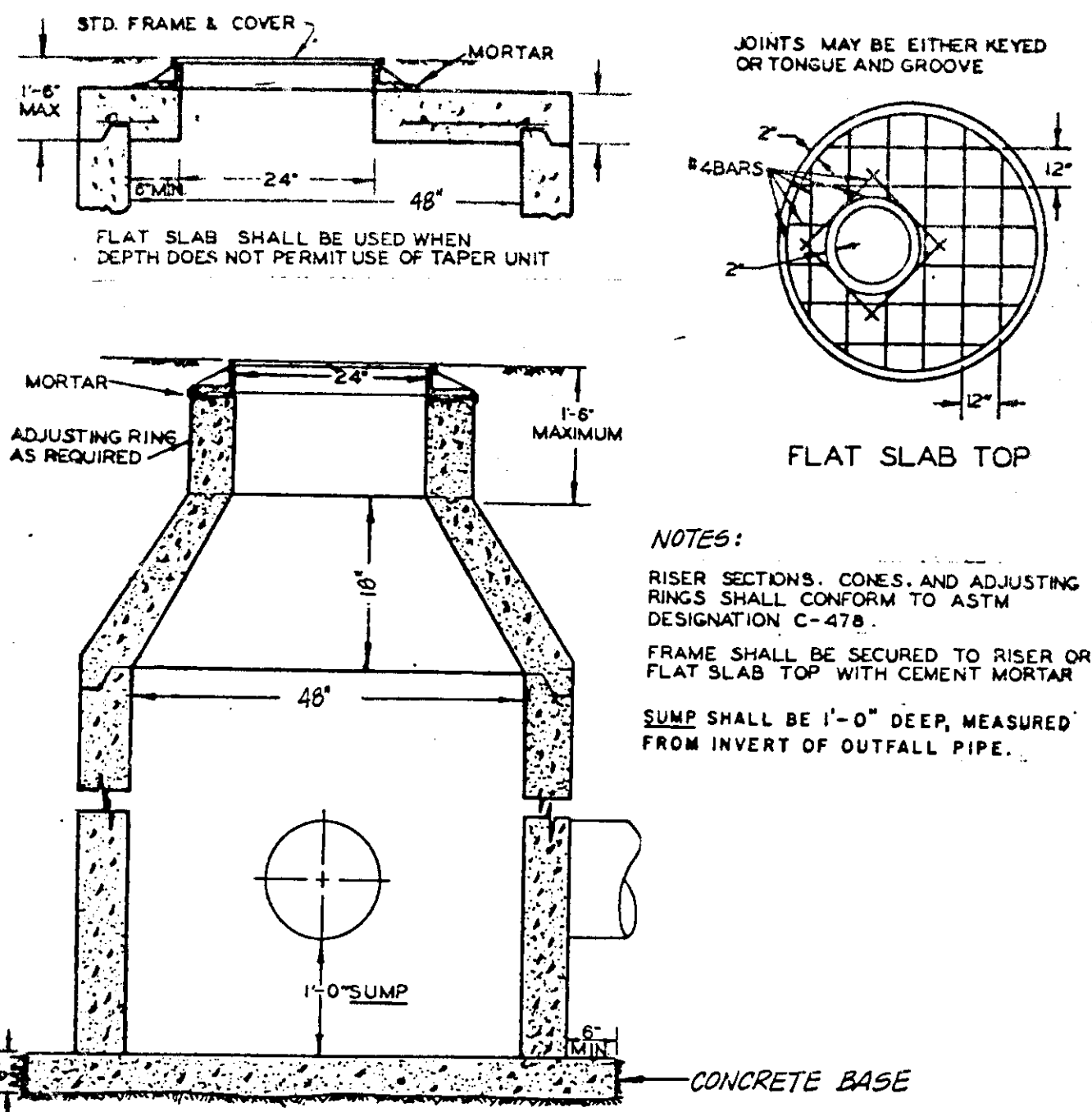


4 SUBDRAIN DETAIL
C-10 N.T.S.

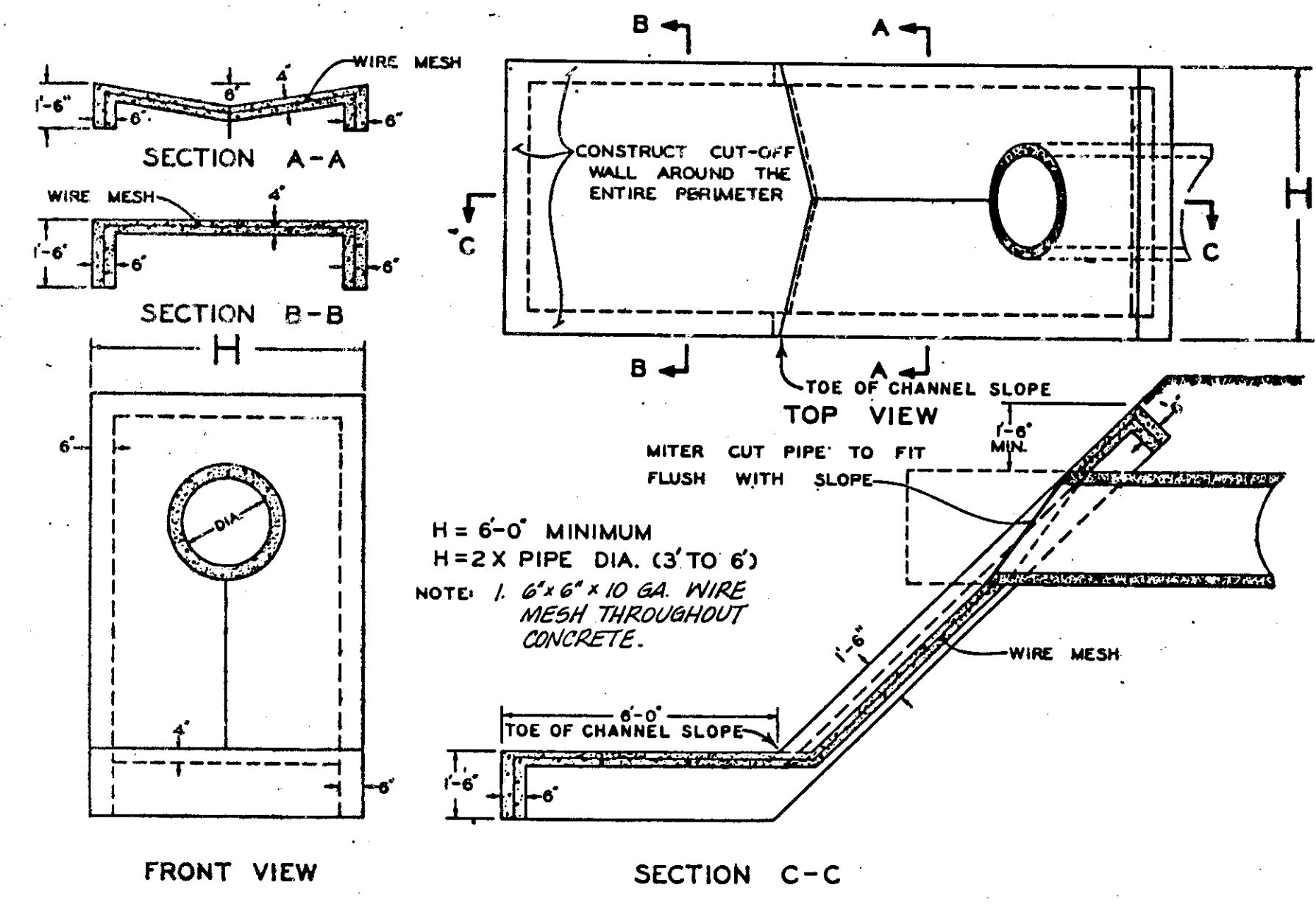


7 CABLE BARRIER
C-10 N.T.S.

- NOTES:
1. PROVIDE CONCRETE FOOTINGS AT ALL END PGSTS, AT ALL BENDS AND AS SPECIFIED IN SPECIAL CONDITIONS.
 2. USE 3/8" X 2" GALVANIZED WIRE ROPE CLIPS FOR CONNECTION AND SPLICES. ALL CLIPS SHALL BE PLACED WITH NUTS FACING DOWNWARD.

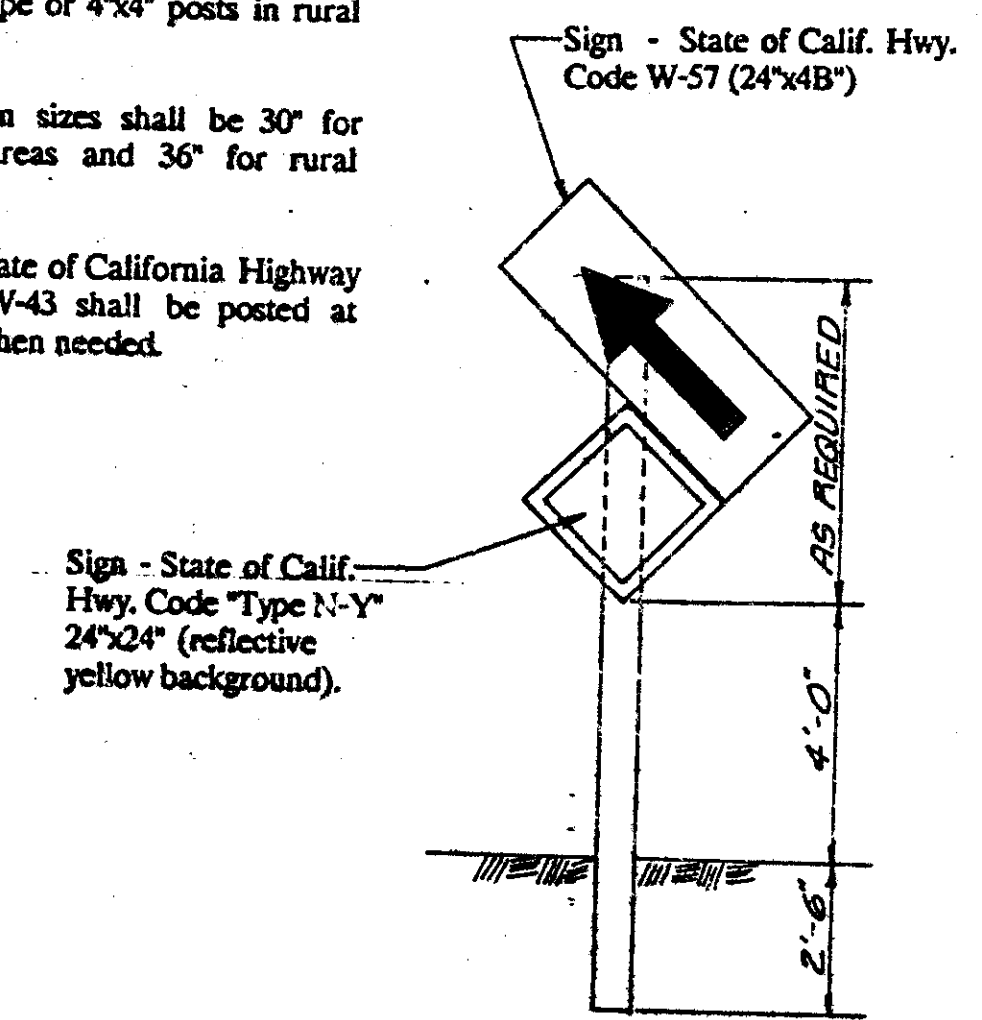


2 STORM DRAIN MANHOLE
C-10 N.T.S.

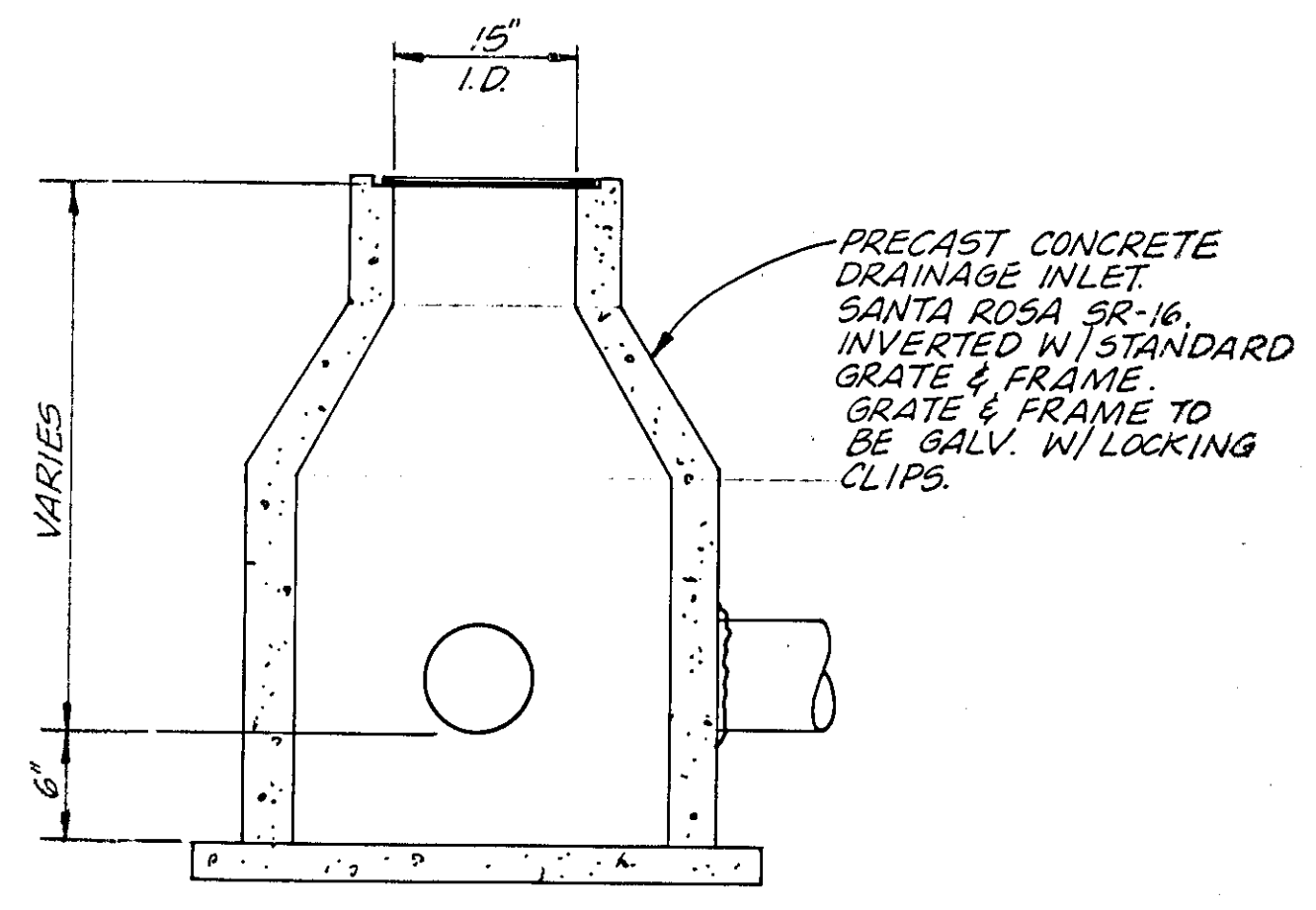


5 OUTFALL DETAIL
C-10 N.T.S.

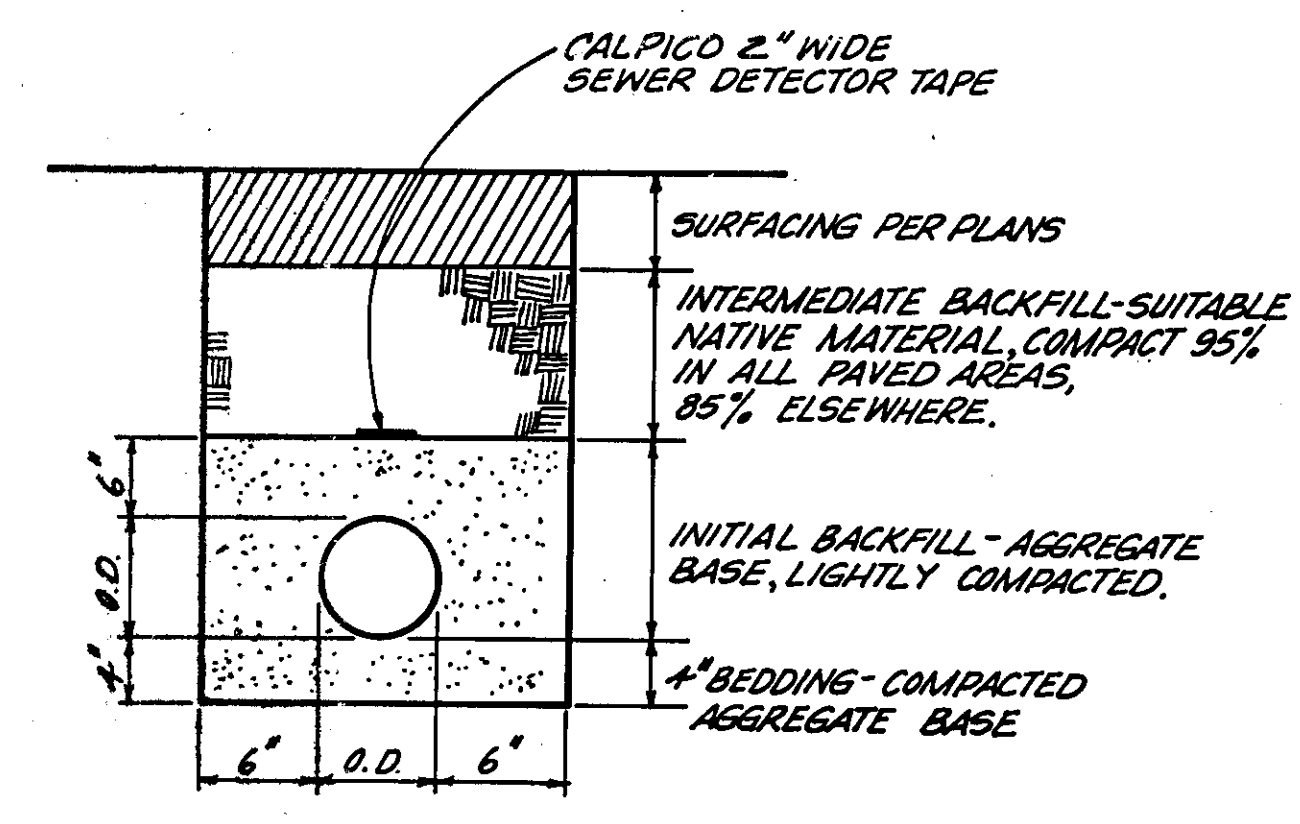
- SIGNS
1. Signs shall be posted on 2" I.D. galv. pipe in urban areas and either pipe or 4"x4" posts in rural areas.
 2. Stop sign sizes shall be 30" for urban areas and 36" for rural areas.
 3. Sign - State of California Highway Code SW-43 shall be posted at curves when needed.



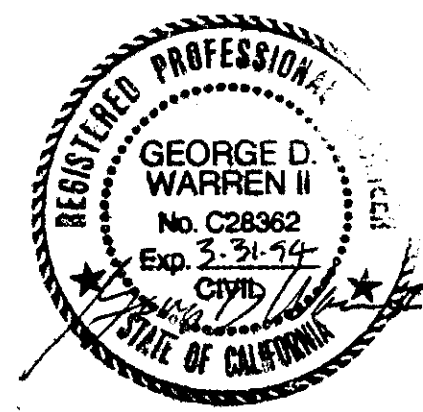
8 TRAFFIC SIGN
C-10 N.T.S.



3 AREA DRAIN
C-10 N.T.S.



6 STORM DRAIN TRENCH
C-10 N.T.S.

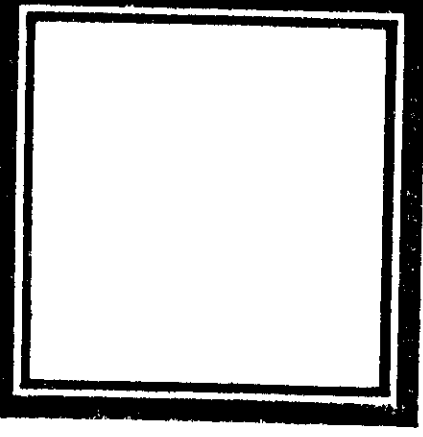
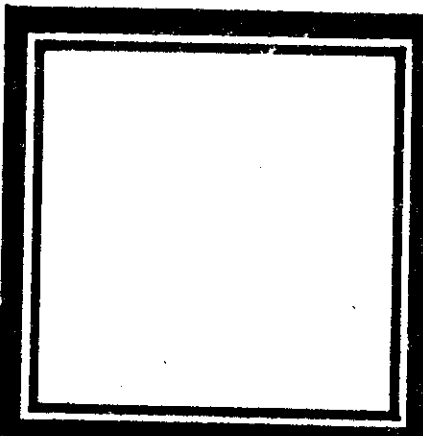


WCE
WARREN CONSULTING ENGINEERS
5777 MADISON AVENUE, SUITE 1200
SACRAMENTO, CA 95841 • (916) 348-8225

AS-BUILTS 12-18-92
Lynn D. Warren, I R/E 28362
LOWER RETENTION BASIN 11-19-91

DETAILS & SECTIONS

NICHOLS & MELBURG ASSOCIATES, INC. REPRESENTS THESE PLANS ON THE SPECIFICATIONS IN CONNECTION THEREWITH ARE SUITABLE WHETHER OR NOT THEY ARE SPECIALLY PREPARED BY NICHOLS & MELBURG ASSOCIATES, INC. AND SPECIALLY PREPARED NICHOLS & MELBURG ASSOCIATES, INC. AND SPECIALLY PREPARED NICHOLS & MELBURG ASSOCIATES, INC. ARE NOT RESPONSIBLE FOR THESE PLANS IN ANY OTHER MANNER.



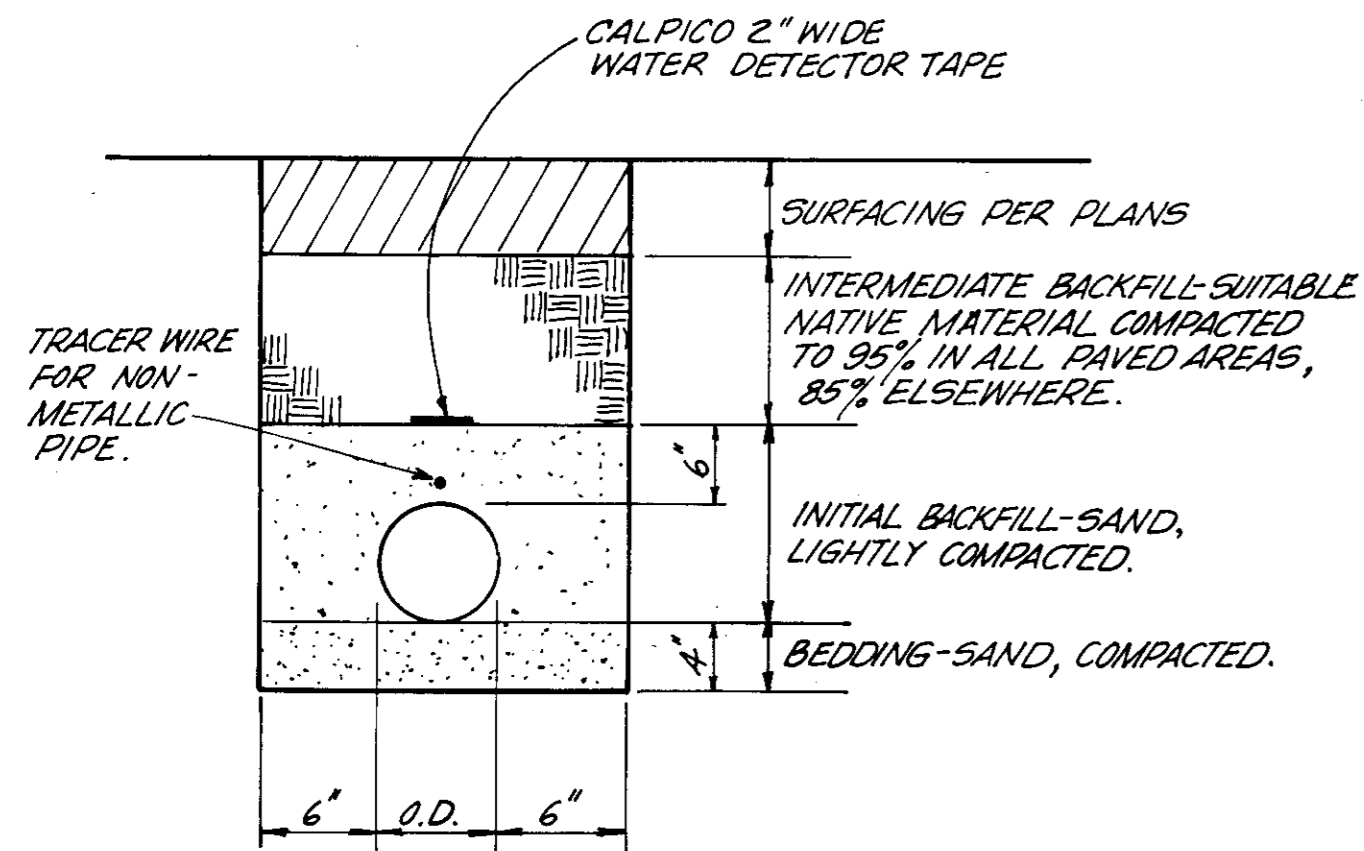
Nichols & Melburg
ROSSILO AIA
7844 Madison Ave. Suite 150
Fair Oaks, California, 95628 (916) 967-1340
ARCHITECTURE

DETAILS & SECTIONS
MANTECA
2ND & 3RD WARDS
AND
MANTECA CA STAKE
303B

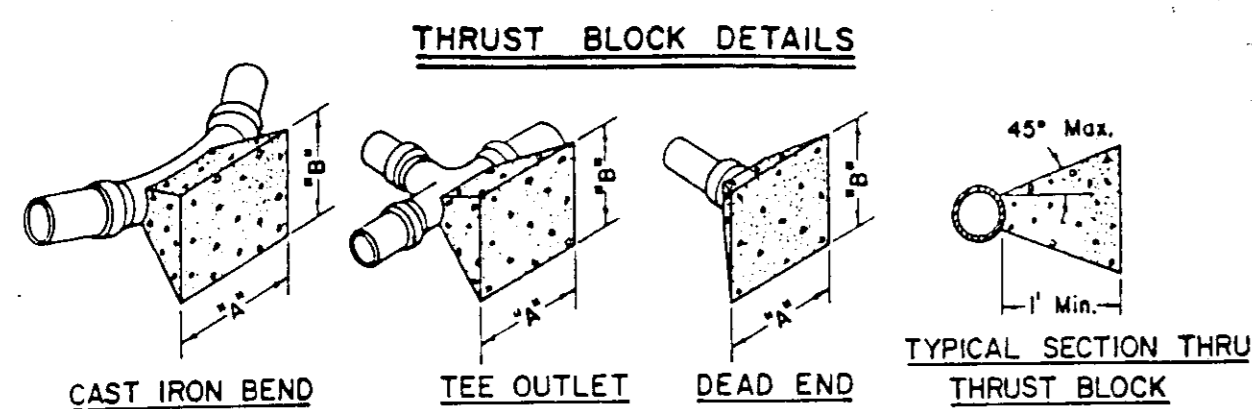
CP	GW	ALBERT B. PPT	AS SHOWN	P 184-01
DR.	CK.	DT.	SC.	NO.

C-10
11-19-91

DRAWING F184010 S1121000



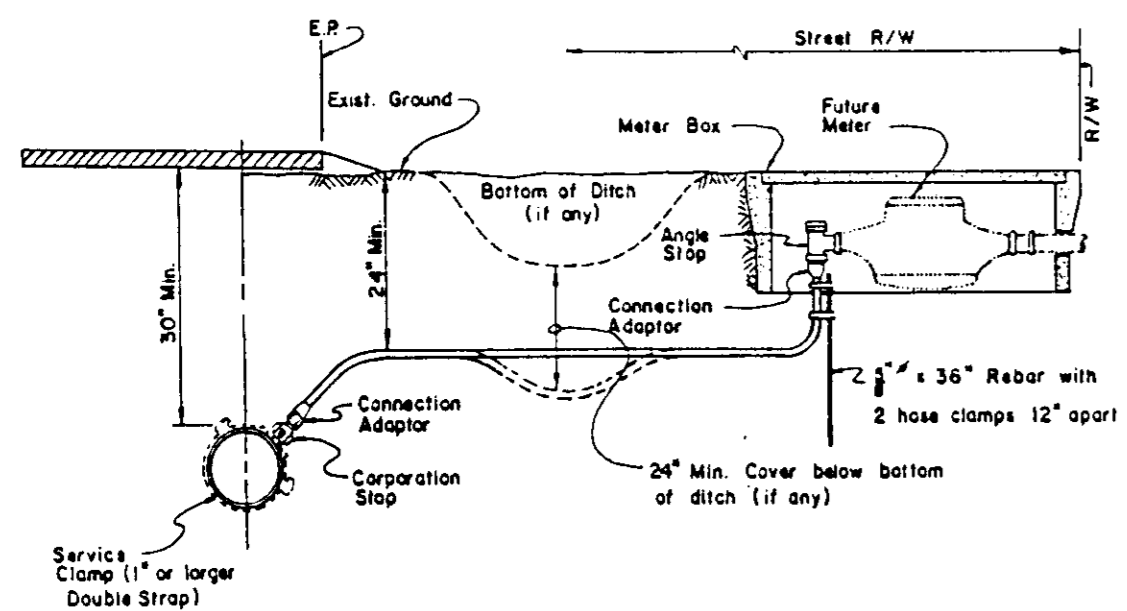
1 WATER TRENCH
C-9 N.T.S.



THRUST BLOCK DIMENSIONS					
FITTINGS	"A"	"B"	FITTINGS	"A"	"B"
6" LINE					
22 1/2"	1'-6"	1'-6"	22 1/2"	3'-0"	2'-0"
45°	2'-0"	2'-0"	45°	4'-0"	3'-0"
90°	3'-0"	2'-6"	90°	5'-6"	4'-0"
TEE OUTLET	3'-0"	2'-0"	TEE OUTLET	4'-0"	4'-0"
DEAD END	3'-0"	2'-0"	DEAD END	4'-0"	4'-0"
8" LINE					
22 1/2"	2'-0"	2'-0"	22 1/2"	3'-0"	3'-0"
45°	3'-0"	2'-6"	45°	4'-6"	4'-0"
90°	4'-0"	3'-6"	90°	8'-0"	4'-0"
TEE OUTLET	3'-6"	3'-0"	TEE OUTLET	5'-6"	4'-0"
DEAD END	3'-6"	3'-0"	DEAD END	5'-6"	4'-0"

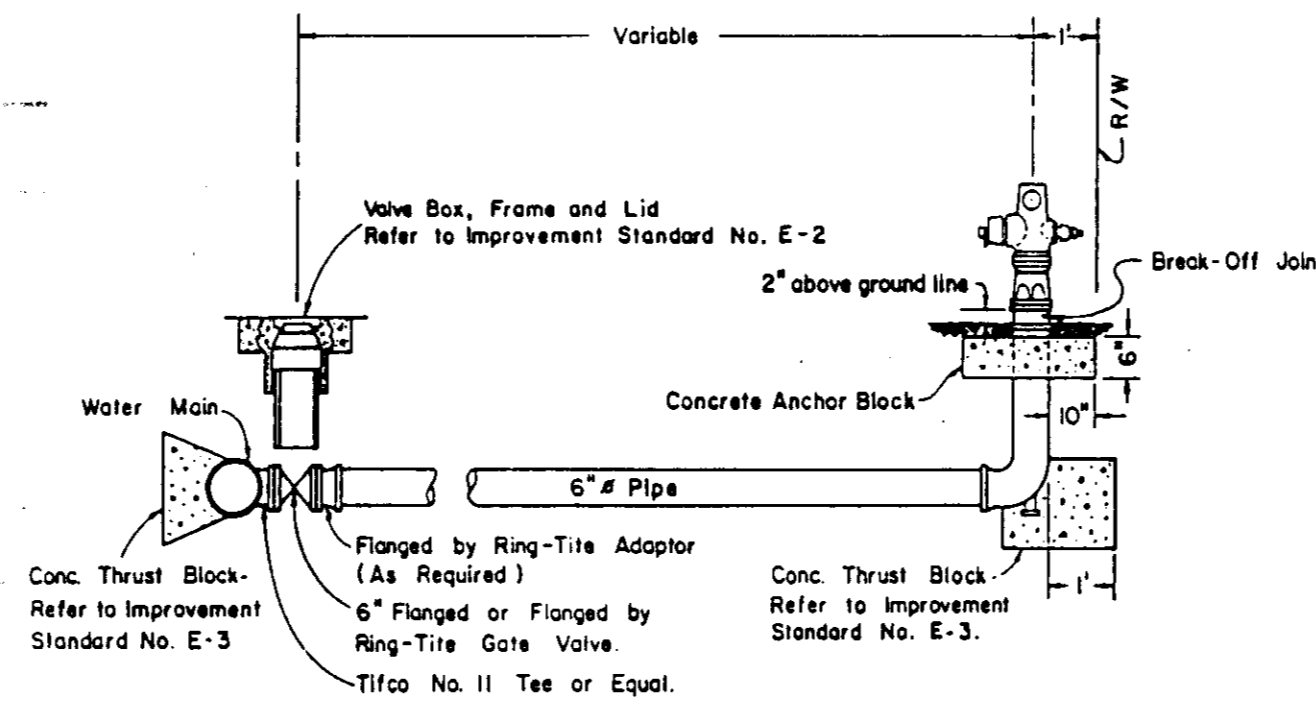
NOTES: 1. All thrust blocks shall be poured against undisturbed soil and shall be Class "B" Concrete.
2. Thrust block dimensions were calculated to allow a soil bearing value of 1,000 pounds per square foot.

2 THRUST BLOCK
C-9 N.T.S.



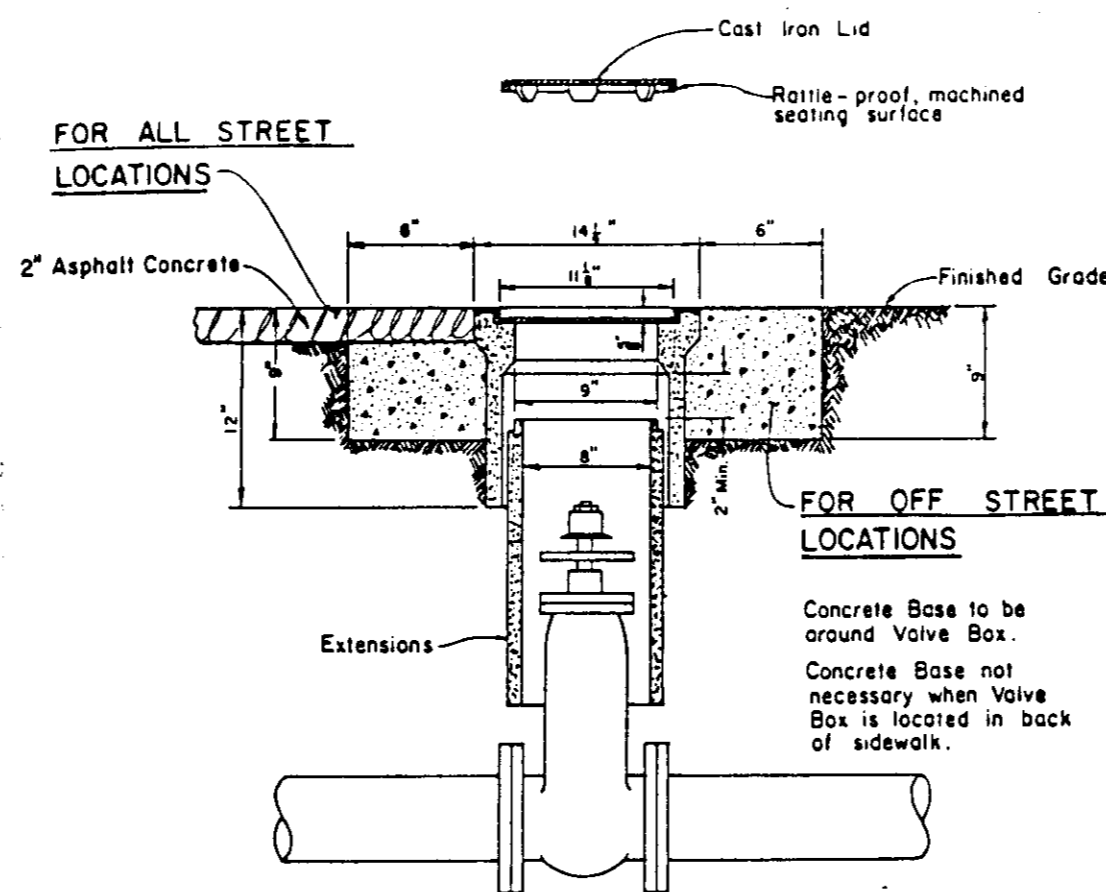
NOTES:
1. Plastic pipe up to 1 1/2" I.D. service shall be ultra high molecular weight (UHMW) Polyethylene as manufactured by "Driscopipe", "Orangeburg" or approved equal with minimum pressure rating of 160 psi.
2. Plastic pipe for 2" I.D. service shall be PB 2110 Polybutylene or approved equal with minimum pressure rating of 160 psi.
3. Carporation stop shall have carporation cock threads.
4. Angle stop shall have swivel nut and lock wings.
5. Angle stop shall be vertically plumbed.
6. Size of service line shall be as required by the County.
7. Mueller, jara-tite connection shall conform to ASTM Designation D 2239.

3 WATER SERVICE
C-9 N.T.S.



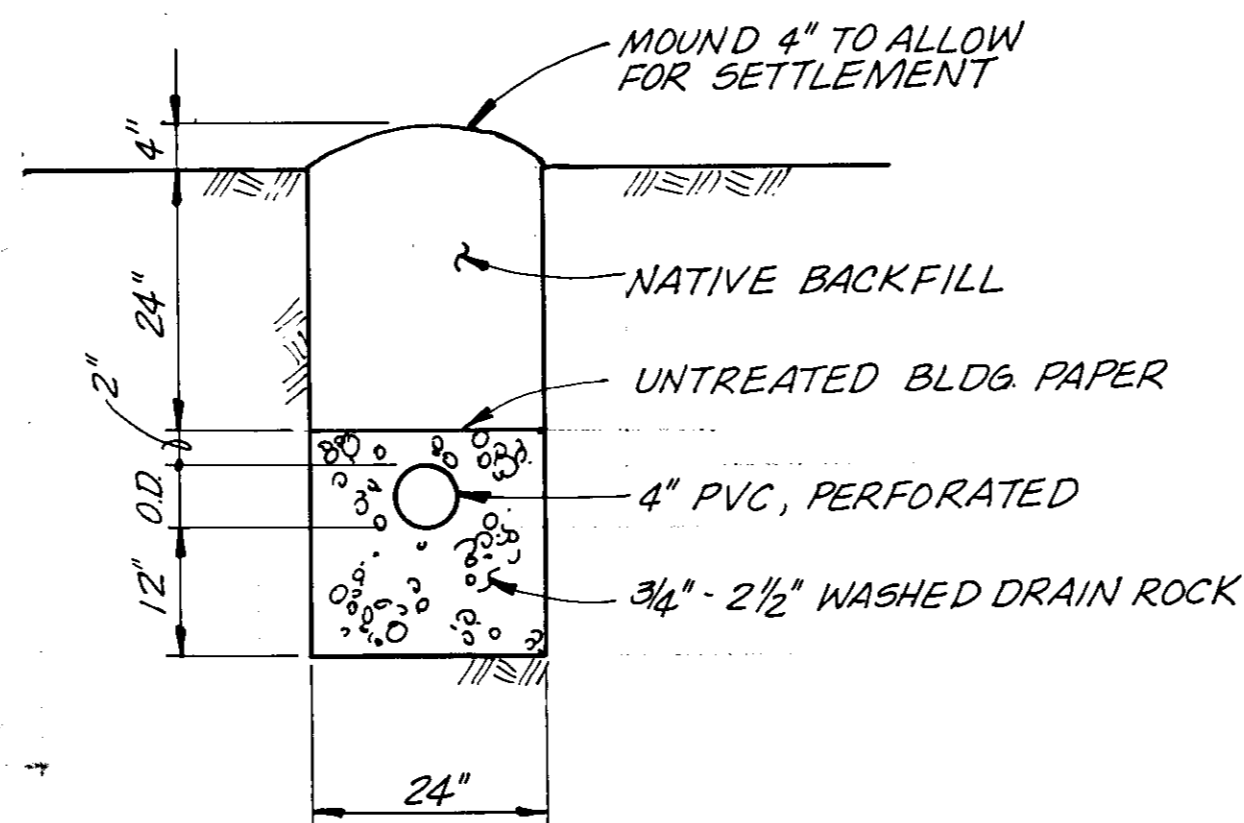
NOTES:
1. Fire Hydrants shall be placed with 4 1/2" outlet facing directly towards the street.
2. Fire Hydrants shall be clean and free of concrete.
3. Fire Hydrants to be American Darling Model B-628, Dresser M & H Style 929, "Reliant", Mueller "Centurion" or "Modern Centurion", or approved equal (2-2 1/2" & 1-4 1/2" outlets)
4. Or other size as required by the local Fire District.
5. All Hydrants shall be painted OSHA safety yellow or as required by local Fire District.

4 FIRE HYDRANT
C-9 N.T.S.

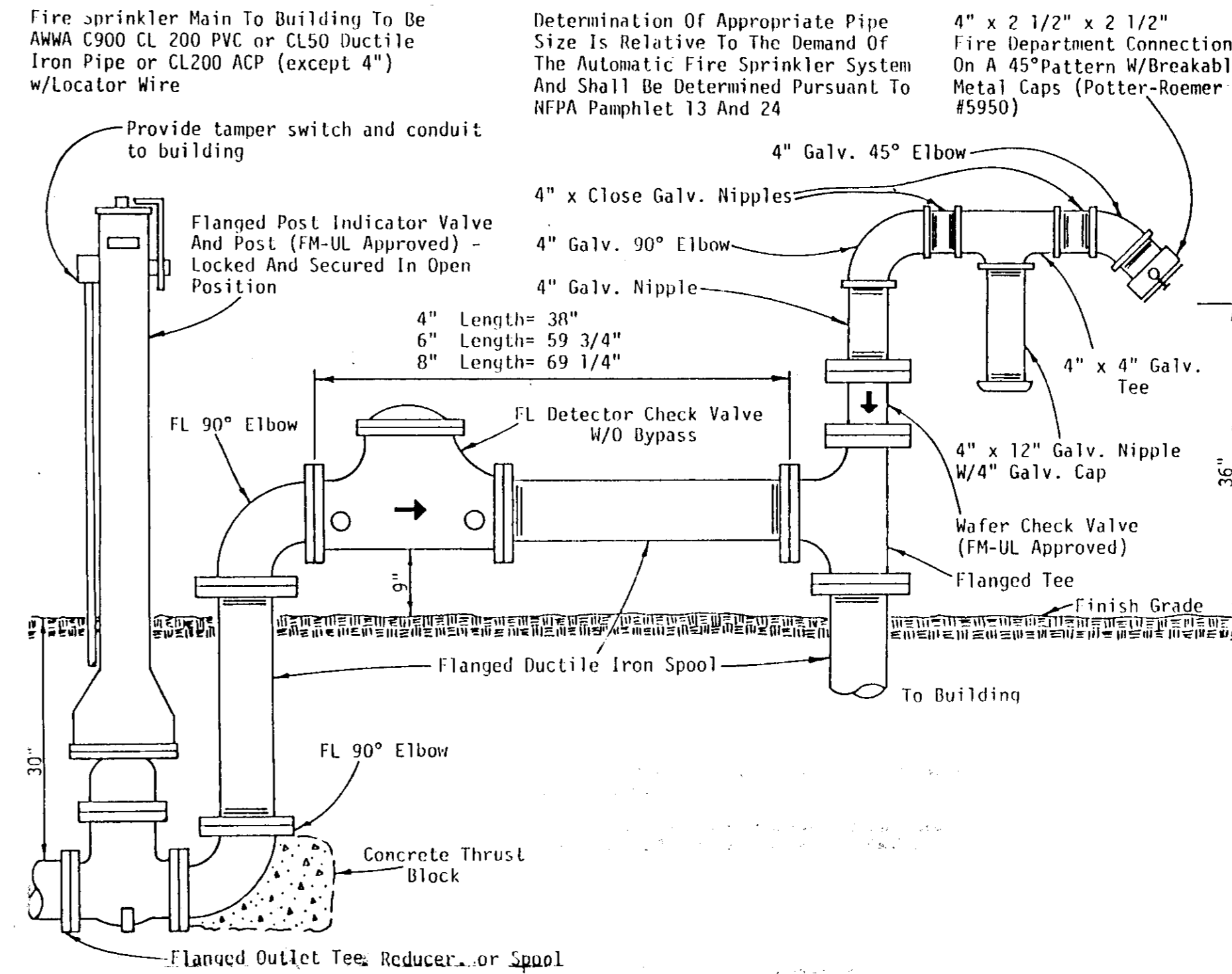


NOTES:
1. Valve box and Lid shall be Christy No. G5, Brooks No. RT or 4-TT, or equal.
2. All Lids and Grade Rings shall have machined seating surfaces.
3. Extensions shall be as manufactured for the Valve Box supplied or Pipe of correct size can be used.

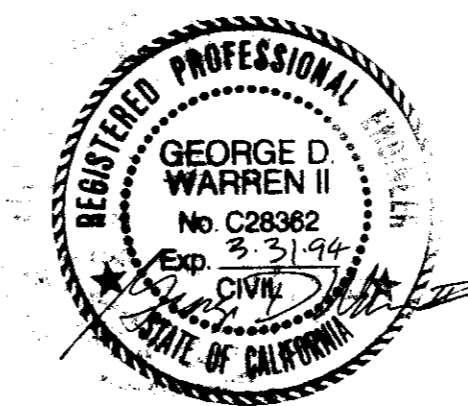
5 FIRE HYDRANT VALVE BOX
C-9 N.T.S.



6 DRAIN FIELD-LEACH LINE DETAIL
C-9 N.T.S.



7 FIRE SPRINKLER DOUBLE CHECK VALVE
C-9 N.T.S.



WCE
WARREN CONSULTING ENGINEERS
5777 MADISON AVENUE, SUITE 1200
SACRAMENTO, CA 95841 • (916) 349-8225

AS-BUILTS 12-18-92
Kemp D. Warren I RCE 28362

WATER & SEWER DETAILS

NICHOLS MELBURG ROSSICHO AIA AND ASSOCIATES DO NOT WARRANT THESE PLANS OR THE SPECIFICATIONS IN CONNECTION WITH THEM OR THE QUALITY OF THE WORK MODIFIED FOR ANY OTHER SITE THAN THE ONE FOR WHICH THEY WERE SPECIFICALLY PREPARED. NICHOLS MELBURG ROSSICHO AIA AND ASSOCIATES WILL NOT BE RESPONSIBLE FOR ANY ERRORS, OMISSIONS, OR INCONSISTENCIES IN THESE PLANS AND SPECIFICATIONS IF THEY ARE USED IN WHOLE OR IN PART AT ANY OTHER SITE.

Nichols & Melburg
ROSSICHO AIA
7844 Madison Ave. Suite 150
Fair Oaks, California 95628 (916) 967-1340
ARCHITECTURE

WATER/SEWER DETAILS
MANTECA
2ND & 3RD WARDS
AND
MANTECA CA STAKE
3038

DIR	CP
CHK	GW
DT	AUGUST B. FRI
SC	AS SHOWN
NO	P184-01

C-9

DRAWING P184-01-9 SU 2100

OFF-SITE WATER IMPROVEMENTS

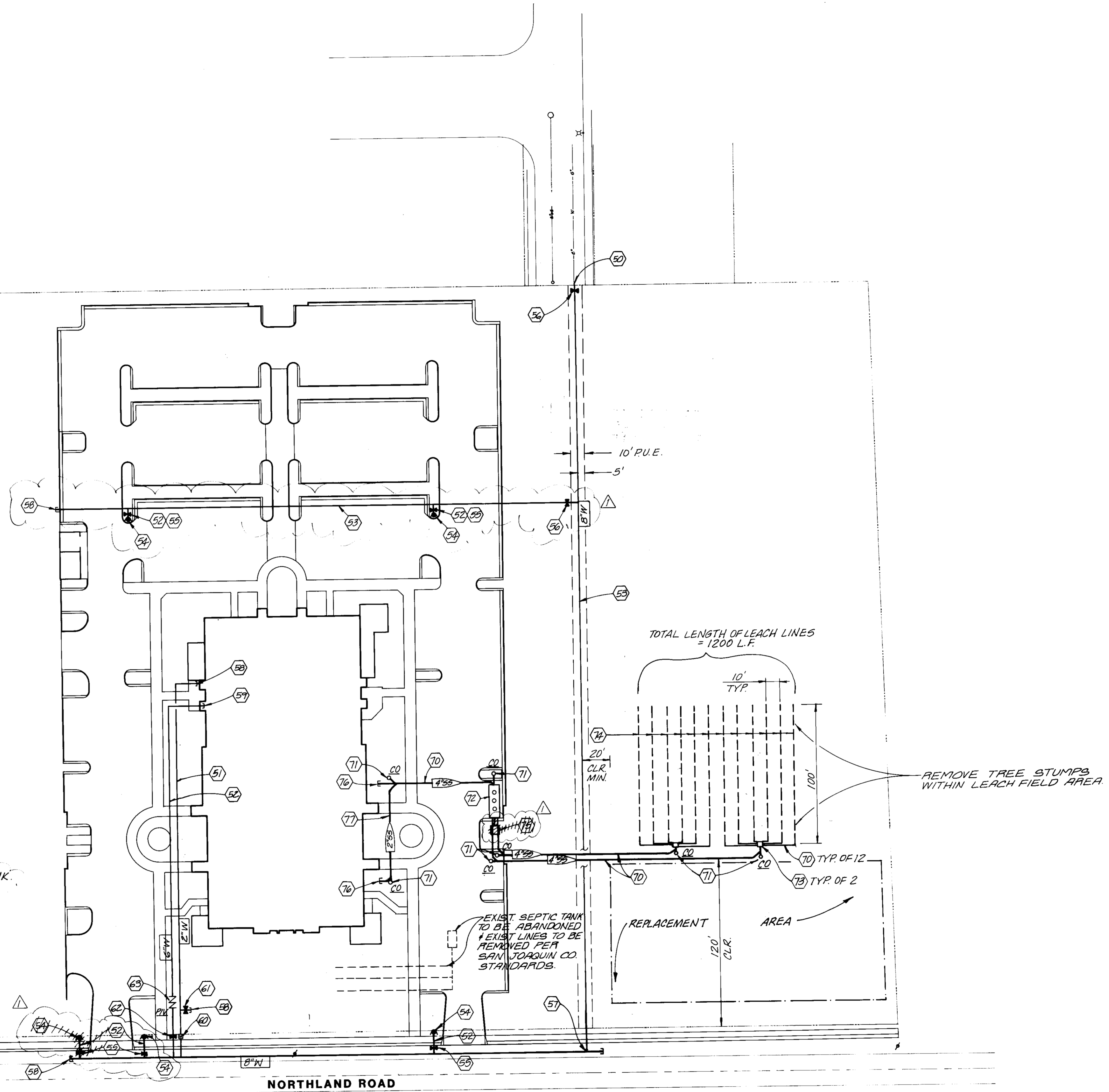
1. The Contractor shall coordinate all activities with San Joaquin County Maintenance and Operations.
2. The Contractor will replace the existing Raymus Village Well Pump #2 with a new pump and motor. The pump and motor to be compatible with existing power and controls. Pump shall provide a minimum of 700 gpm at 50 psi.
3. Contractor shall provide pump test of well and water quality analysis before and after pump installation.

WATER CONSTRUCTION NOTES

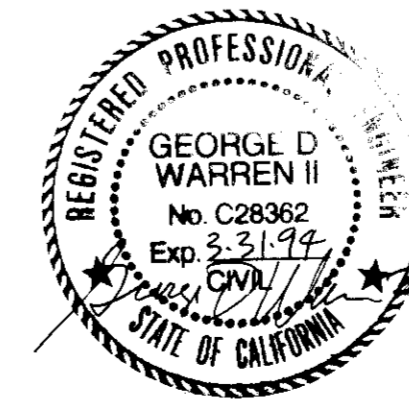
50. Connect to existing 6" water line.
51. Place 2" water line.
52. Place 6" water line.
53. Place 8" water line.
54. Place fire hydrant. $\frac{4}{C-9}$
55. Place 6" gate valve.
56. Place 8" gate valve.
57. Place 8 X 8 X 8 tee w/ blind flange.
58. Plug and mark end.
59. Blind flange fire sprinkler service at 6" above finish floor.
60. Provide 2" water service and meter. $\frac{3}{C-9}$
61. Provide 3" gate valve for irrigation service.
62. Provide 6" P.I.V. w/ tamper switch.
63. Provide 6" double check valve w/ fire department connection. $\frac{7}{C-9}$

SANITARY SEWER CONSTRUCTION NOTES

70. PLACE 4" SANITARY SEWER, S=0.01.
71. CONSTRUCT CLEANOUT.
72. PLACE 4500 GALLON SEPTIC TANK.
73. CONSTRUCT DISTRIBUTION BOX.
74. PLACE 4" LEACH LINE.
75. PLACE ~~DOSING TANK WITH ALTERNATING SIPHONS~~ ALTERNATING DOSING PUMPS WITHIN SEPTIC TANK.
76. PLUG AND MARK END.
77. PLACE 2" SANITARY SEWER, S=0.02.



SUB 2003



AS-BUILT INFO. ADDED

AS-BUILTS 12-18-92

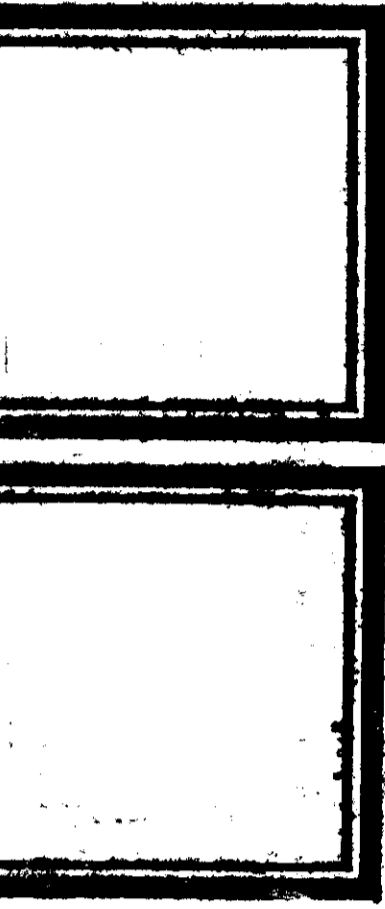
WARREN CONSULTING ENGINEERS
5777 MADISON AVENUE, SUITE 1200
SACRAMENTO, CA 95841 • (916) 348-8225

George D. Warren II
REC 28362



WATER & SEWER PLAN

THIS PLAN IS THE PROPERTY OF NICHOLS & MELBURG ARCHITECTURE. IT IS TO BE USED ONLY FOR THE PROJECT AND SITE SPECIFICALLY IDENTIFIED HEREON. ANY REUSE OR MODIFICATION OF THIS PLAN WITHOUT THE WRITTEN CONSENT OF NICHOLS & MELBURG ARCHITECTURE IS STRICTLY PROHIBITED.



Nichols & Melburg
Rossetto AIA
7444 Madison Ave. Suite 150
Fair Oaks, California 95628 • (916) 967-1340
ARCHITECTURE

WATER & SEWER PLAN
MANTECA
2ND & 3RD WARD
AND
MANTECA CA STAKE
303B

MR.	MG.
CHK.	GW.
DATE	08/02/97
SCALE	1" = 40'
NO.	F18401

C-8

SHAWNEE WAY

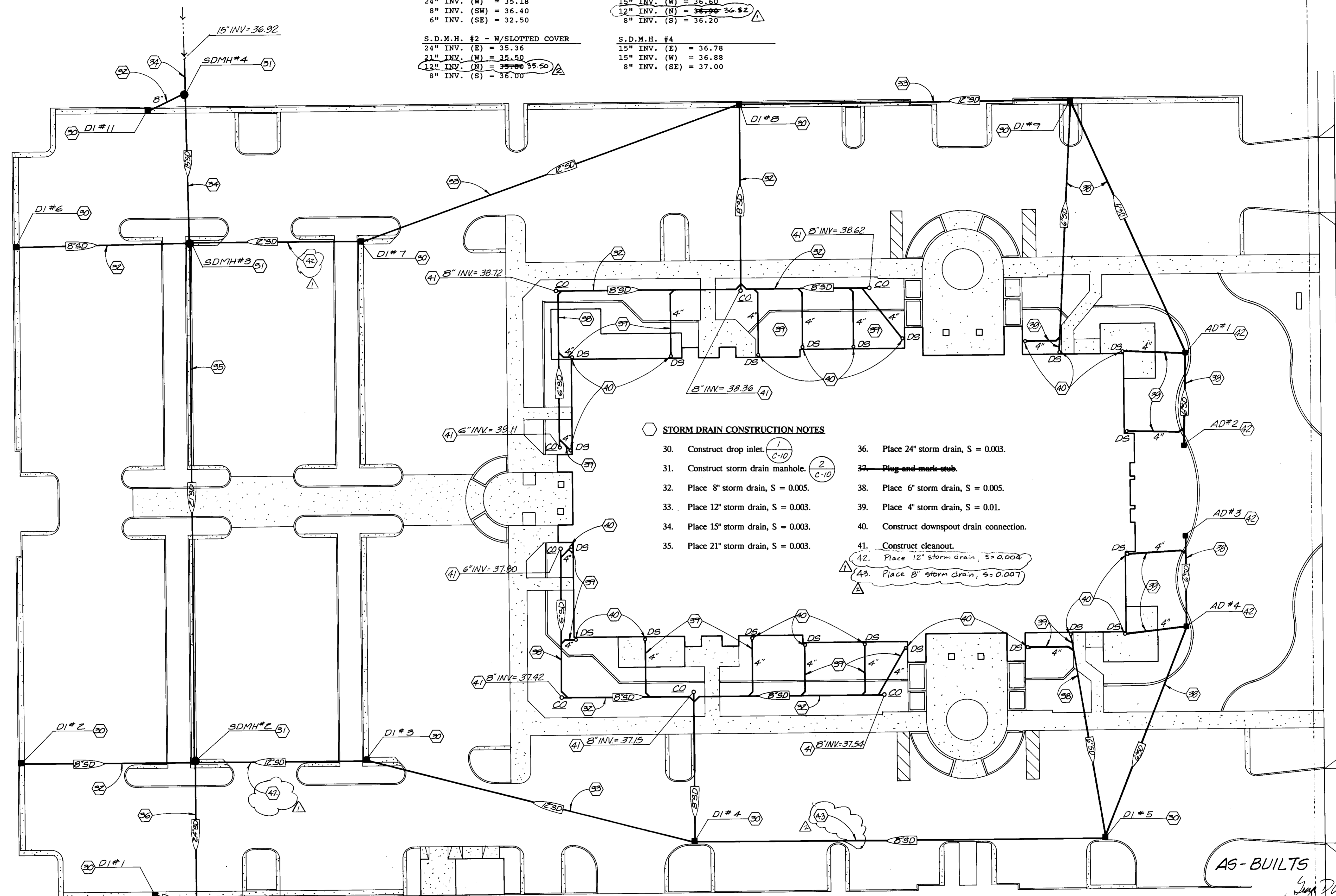
STORM DRAIN MANHOLE SCHEDULE

S.D.M.H. #1
 24" INV. (E) = 35.08
 24" INV. (W) = 35.18
 8" INV. (SW) = 36.40
 8" INV. (SE) = 32.50

S.D.M.H. #3 - W/SLOTTED COVER
 21" INV. (E) = 36.13
 15" INV. (W) = 36.60
 12" INV. (N) = ~~36.80~~ 36.82
 8" INV. (S) = 36.20

S.D.M.H. #2 - W/SLOTTED COVER
 24" INV. (E) = 35.36
 21" INV. (W) = 35.50
 12" INV. (N) = ~~35.80~~ 35.50
 8" INV. (S) = 36.00

S.D.M.H. #4
 15" INV. (E) = 36.78
 15" INV. (W) = 36.88
 8" INV. (SE) = 37.00



STORM DRAIN CONSTRUCTION NOTES

- 30. Construct drop inlet. $\frac{1}{C-10}$
- 31. Construct storm drain manhole. $\frac{2}{C-10}$
- 32. Place 8" storm drain, S = 0.005.
- 33. Place 12" storm drain, S = 0.003.
- 34. Place 15" storm drain, S = 0.003.
- 35. Place 21" storm drain, S = 0.003.
- 36. Place 24" storm drain, S = 0.003.
- 37. Plug-and-mark stub.
- 38. Place 6" storm drain, S = 0.005.
- 39. Place 4" storm drain, S = 0.01.
- 40. Construct downspout drain connection.
- 41. Construct cleanout.
- 42. Place 12" storm drain, S = 0.004.
- 43. Place 8" storm drain, S = 0.007.

AREA DRAIN SCHEDULE

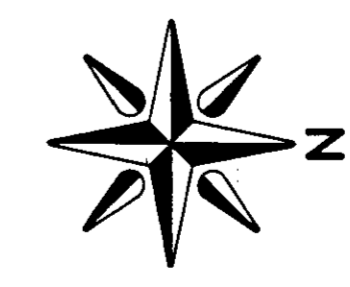
A.D. #1
6" INV. (SW) = 39.36
6" INV. (E) = 39.46
4" INV. (S) = 39.50
A.D. #2
6" INV. (W) = 39.65
A.D. #3
6" INV. (E) = 38.24
A.D. #4
6" INV. (SE) = 37.95
6" INV. (W) = 38.05
4" INV. (S) = 38.15

DROP INLET SCHEDULE

D.I. #1
8" INV. (NE) = 36.50
D.I. #2
8" INV. (N) = 36.35
D.I. #3
12" INV. (S) = 36.81 36.78
12" INV. (NE) = 36.81 35.81
D.I. #4
12" INV. (SW) = 36.82 36.72
8" INV. (W) = 36.85
8" INV. (N) = 36.85 36.90
D.I. #5
8" INV. (S) = 37.40 37.40
6" INV. (W) = 37.50
6" INV. (NW) = 37.50
D.I. #6
8" INV. (N) = 36.55
D.I. #7
12" INV. (S) = 37.10
12" INV. (NW) = 37.20
D.I. #8
12" INV. (SE) = 37.69
12" INV. (N) = 37.79
8" INV. (E) = 38.00
D.I. #9
12" INV. (S) = 38.19
12" INV. (N) = 38.29
6" INV. (E) = 38.80
6" INV. (NE) = 38.80
D.I. #10
12" INV. (S) = 38.60
D.I. #11
8" INV. (NW) = 37.08

FOR CONTINUATION SEE SHEET C-6

AS-BUILTS 12-18-92
Guy Wilson
REV 28362



WCE
WARREN CONSULTING ENGINEERS
5777 MADISON AVENUE, SUITE 1200
SACRAMENTO, CA 95841 • (916) 349-8225

PARTIAL DRAINAGE PLAN

STORM DRAIN REVISION 11/14/91
STORM DRAIN REVISION 10/30/91

Nichols & Melburg
 ROSSIGNOLA
 1500 Madison Ave. Suite 150
 Fair Oaks, California 95628 (916) 967-1340

PART. DRAINAGE PLAN
MANTECA
 2nd & 3rd WARD
 AND
 MANTECA CA STAKE
 303B

CP	GN	PIB#01
DK	UT	NO
CK	UT	NO
UT	NO	NO
NO	NO	NO

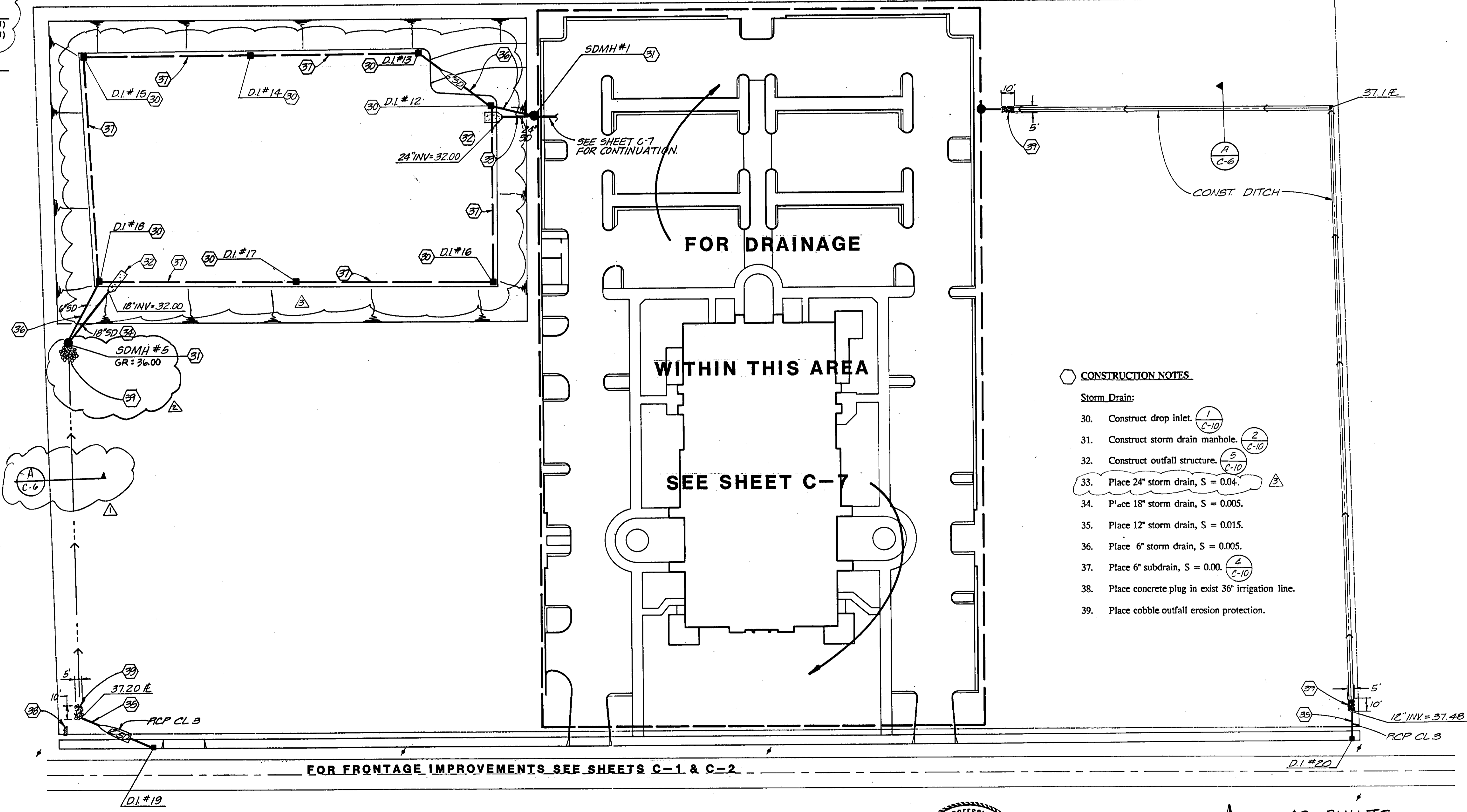
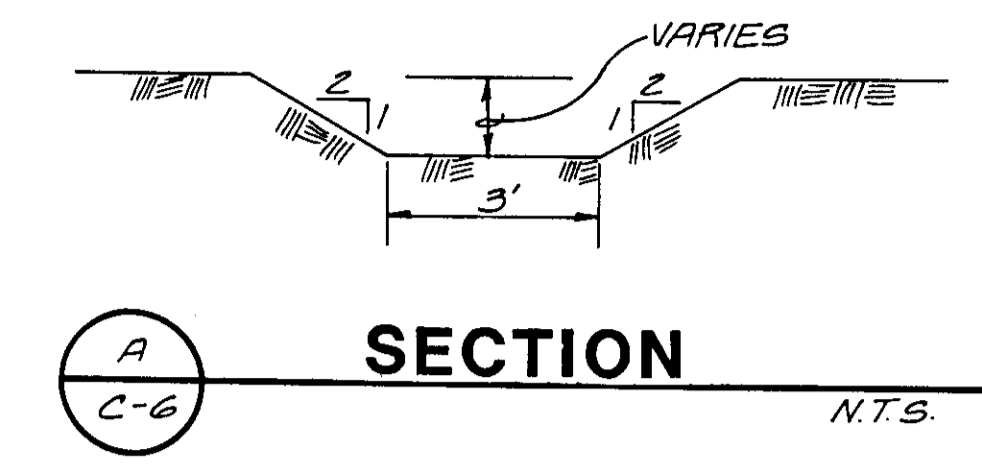
C-7

DROP INLET SCHEDULE

D.I. #12	6" INV. (SE) = 29.24
	6" INV. (N) = 31.80 (SUBDRAIN)
	6" INV. (NW) = 29.94
D.I. #13	6" INV. (E) = 28.80 (SUBDRAIN)
	6" INV. (NW) = 28.91
D.I. #14	6" INV. (E) = 28.80 (SUBDRAIN)
	6" INV. (W) = 28.80 (SUBDRAIN)
D.I. #15	6" INV. (N) = 28.80 (SUBDRAIN)
	6" INV. (W) = 28.80 (SUBDRAIN)
D.I. #16	6" INV. (E) = 28.80 (SUBDRAIN)
	6" INV. (S) = 28.80 (SUBDRAIN)
D.I. #17	6" INV. (E) = 28.80 (SUBDRAIN)
	6" INV. (W) = 28.80 (SUBDRAIN)
D.I. #18	6" INV. (S) = 28.80 (SUBDRAIN)
	6" INV. (W) = 28.80 (SUBDRAIN)
	6" INV. (NE) = 28.90
D.I. #19	12" S.D. (SE) = 38.10
D.I. #20	12" INV. (S) = 37.51

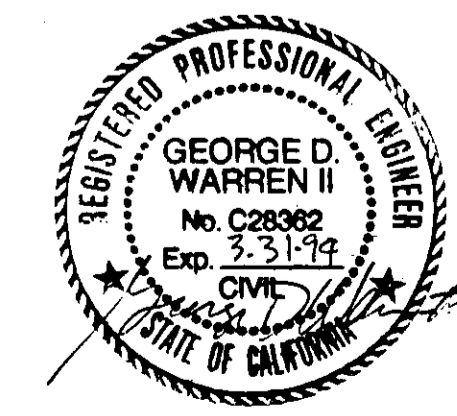
STORM DRAIN MANHOLE SCHEDULE

S.D.M.H. #1	24" INV. (E) = 33.00
	24" INV. (W) = 35.18
	8" INV. (SW) = 36.40
	6" INV. (SE) = 29.50
S.D.M.H. #5 - W/SLOTTED GRATE	18" INV. (SW) = 32.20
	6" INV. (SW) = 29.15



- CONSTRUCTION NOTES**
- Storm Drain:**
30. Construct drop inlet. (1 C-10)
 31. Construct storm drain manhole. (2 C-10)
 32. Construct outfall structure. (5 C-10)
 33. Place 24" storm drain, S = 0.04. (4 C-10)
 34. Place 18" storm drain, S = 0.005.
 35. Place 12" storm drain, S = 0.015.
 36. Place 6" storm drain, S = 0.005.
 37. Place 6" subdrain, S = 0.00. (4 C-10)
 38. Place concrete plug in exist 36" irrigation line.
 39. Place cobble outfall erosion protection.

DRAWING P1840106 (S) 2605



WCE
WARREN CONSULTING ENGINEERS
577 MADISON AVENUE, SUITE 1200
SACRAMENTO, CA 95841 • (916) 349-8225



AS-BUILTS 12-18-92
George D. Warren II RES 28362

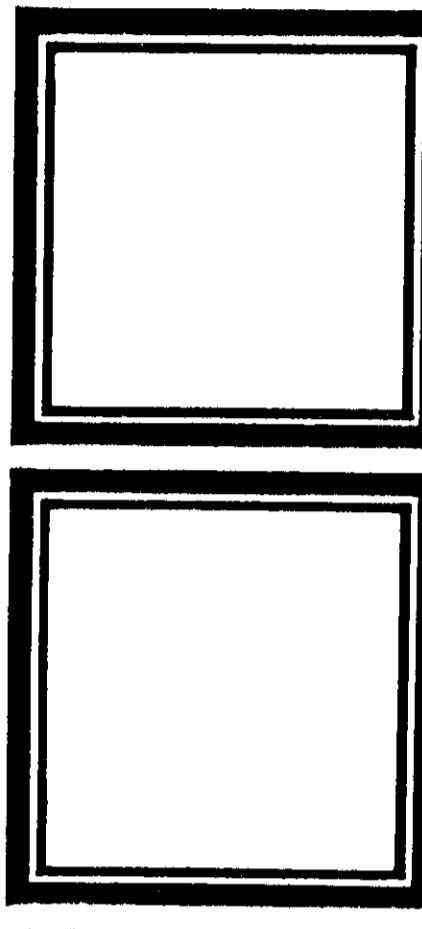
LOWER RETENTION BASIN 11/19/91
& DELETE BERM

STORM DRAIN REVISIONS 11/14/91

DRAINAGE PLAN

SITE PLAN REVISION 10/24/91

NOTICE: THESE PLANS AND SPECIFICATIONS ARE PREPARED BY THE ARCHITECT OR ENGINEER AND REPRESENT THE BEST AND MOST COMPLETE INFORMATION AVAILABLE AT THE TIME OF PREPARATION. THE CONTRACTOR SHALL BE RESPONSIBLE FOR VERIFYING THE ACCURACY OF ALL INFORMATION AND CONDITIONS AT THE SITE. THE ARCHITECT OR ENGINEER SHALL NOT BE RESPONSIBLE FOR ANY OMISSIONS, ERRORS, OR INADEQUACIES IN THE PLANS AND SPECIFICATIONS OR FOR ANY CONSEQUENCES ARISING FROM THEIR USE IN WHOLE OR IN PART AT ANY OTHER SITE.



Nichols Melburg
Rossetto AIA
7844 Madison Ave. Suite 150
Fair Oaks, California, 95628 ☎ (916) 967-1140

ARCHITECTURE

DRAINAGE PLAN
MANTECA
2ND & 3RD WARD
AND STAKE
MANTECA CA STAKE
3038

DR.	CP	GW	REVISED BY	DATE

C-6
11.19.91

SOUTH SAN JOAQUIN IRRIGATION DISTRICT CONSTRUCTION NOTES

The following apply to all work within South San Joaquin Irrigation District right-of-way or easements and all work on South San Joaquin Irrigation District irrigation lines:

1. South San Joaquin Irrigation District shall be contacted at least 48 hours prior to commencement of work on or near irrigation lines. Construction on or near irrigation lines must be accomplished between October 15 and February 15 of any year. Between the time of February 15 and October 15 irrigation lines will be used for irrigation purposes only and as such, unless special arrangements are made with the District, construction will not be allowed. For all construction work involving pipelines used to convey stormwater, the contractor shall complete all such construction in a timely and diligent manner without restricting the normal flow of water within the line.

2. Used materials, rejects, misfits, or seconds, etc. are not acceptable for use on District facilities.
3. Waterstop or equivalent shall be used at all cold joints. A 6" thick by 8' long concrete overlap will be required at all cold joints occurring during the placement of the cast-in-place pipe used for irrigation lines. Cold joints include fresh concrete which has been allowed to set for more than 30 minutes).

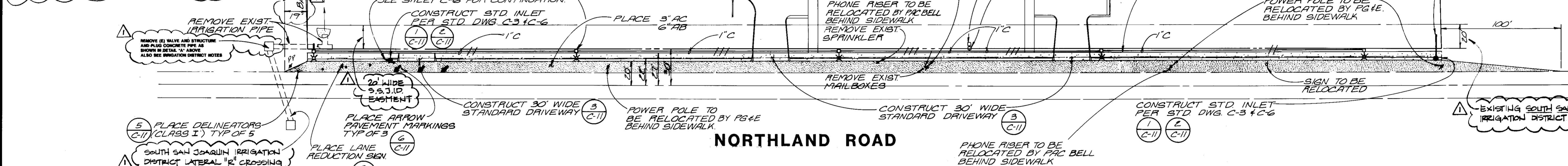
4. All irrigation boxes shall be formed inside and out and concrete vibrated sufficiently to provide for smooth surfaced walls without voids and honeycombs.
5. South San Joaquin Irrigation District shall inspect all work phases on irrigation facilities for conformance to District specifications. Reinforcing shall not be engaged in concrete without prior District inspection. Likewise, concrete shall not be covered with earth prior to District inspection.
6. District shall be provided with name, address, and phone number of contractors, subcontractors, etc. responsible for work being performed on District facilities. Also, provide name and number of contact person responsible for overseeing all phases of construction.
7. The contractor hereby agrees to make, at his own expense, all repairs or replacements necessitated by defects in materials or workmanship, supplied for District facilities, and pay for any damage to other works resulting from such defects which become evident within 1 year after the date of final acceptance of work. The contractor further agrees to hold the District harmless from liability of any kind arising from damage due to said defects. The contractor shall make all repairs and replacements promptly upon written order from the District.

8. The contractor will be responsible for the repairs of all pipeline cracks which develop during construction of improvements affecting the pipeline.
9. The contractor shall not leave District pipeline projects incomplete for more than two weeks. When conditions require, contractor shall provide a temporary diversion ditch to provide for irrigation water delivery or stormwater removal.
10. WATERSTOP R/X: Waterstop R/X shall be installed in accordance with installation instructions recommended by the manufacturer. Waterstop R/X shall be held snugly in-place with plastic or metal netting or other non-biodegradable material of similar construction. A sample of the netting material proposed to be used shall be submitted with written application to the South San Joaquin Irrigation District for its approval a minimum of one week prior to installation. No substitutions of netting material will be permitted without the advance written approval of the District's Engineering Department Head.

11. USE OF PUBLIC UTILITY EASEMENTS: South San Joaquin Irrigation District has been granted an exclusive easement for its use and disposition. The Public Utility Easement (PUE) may be permitted to overlap the South San Joaquin Irrigation District easement either above or below ground where written permission of South San Joaquin Irrigation District is obtained prior to construction and after written application. Furthermore, transformers, panel boxes, meter installations, pull boxes, and other utility company facilities of the PUE or any other which, in anyway, are perceived by South San Joaquin Irrigation District as obstructing its easy access and/or making its easements or systems maintainability, repair, and replacement more complex and costly are prohibited.
12. TIME LIMITS FOR DEVELOPMENT PLANS: South San Joaquin Irrigation District has adopted "Time Limits" limiting the period of its approval should the landowner/developer fail to substantially complete his development project in a timely manner and as per Approved Development Plans. These "Time Limits" adopted by South San Joaquin Irrigation District are in most cases equal to those utilized by the governmental agency or institution responsible for development approvals. Should the "Time Limit" be exceeded, South San Joaquin Irrigation District reserves the right to then apply any of its current development standards and requirements.
13. Contractor shall pump South San Joaquin Irrigation District pipeline dry prior to excavation underneath it.

S.S.J.I.D., its employees and agents are not responsible for verification of the elevations and dimensions indicated on plans nor any errors or omissions that may be present. Approval is subject to the data shown which appears to be in conformity with S.S.J.I.D. requirements for protection of District Facilities.

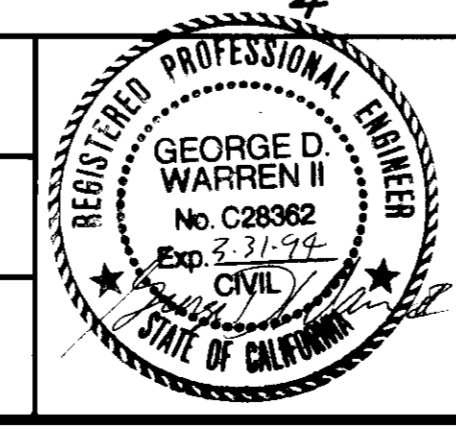
So Conditionally Approved *[Signature]* Date 11/12/91



Stationing	Proposed Gutter E	Exist. EP Elev.'s	Exist. E Elev.'s
43.10			
43.65			
43.70			
43.8			
43.61			
43.8			
44.08			
44.15			
44.5			
44.64			
44.80			
44.94			
45.07			
45.74			
45.82			
45.9			
45.59			
44.79			
44.64			
44.77			
43.86			
43.68			
42.06			
41.04			
40.72			
40.60			
40.38			
40.16			
39.72			
39.47			



A.P.N.	DESIGNED: GW	HORIZONTAL SCALE: 1" = 40'
BENCHMARK NO. _____ ELEV. _____	DRAWN: MB	VERTICAL SCALE: 1" = 2'
SEE SHEET C-1	CHECKED: GW	JOB NO.: P18401
DATE: AUGUST 8, 1991	NO.	REVISION
	APP'D	DATE



WCE
WARREN CONSULTING ENGINEERS
5777 MADISON AVENUE, SUITE 1200
SACRAMENTO, CA 95841 (916) 349-8225

NORTHLAND ROAD
LDS CHURCH - 2 ND AND 3 RD WARDS AND
MANTECA STAKE
COUNTY OF SAN JOAQUIN CALIFORNIA

THIS SHEET PART OF ADDENDUM #2

Nichols Melburg
ROSSCITO AIA
7844 Madison Ave. Suite 150
Fair Oaks, California. 95628 (916) 967-1340

ARCHITECTURE

REVISED
C-2

REVISIONS REQUIRED TO OBTAIN S.S.J.I.D. APPROVAL

NOTE

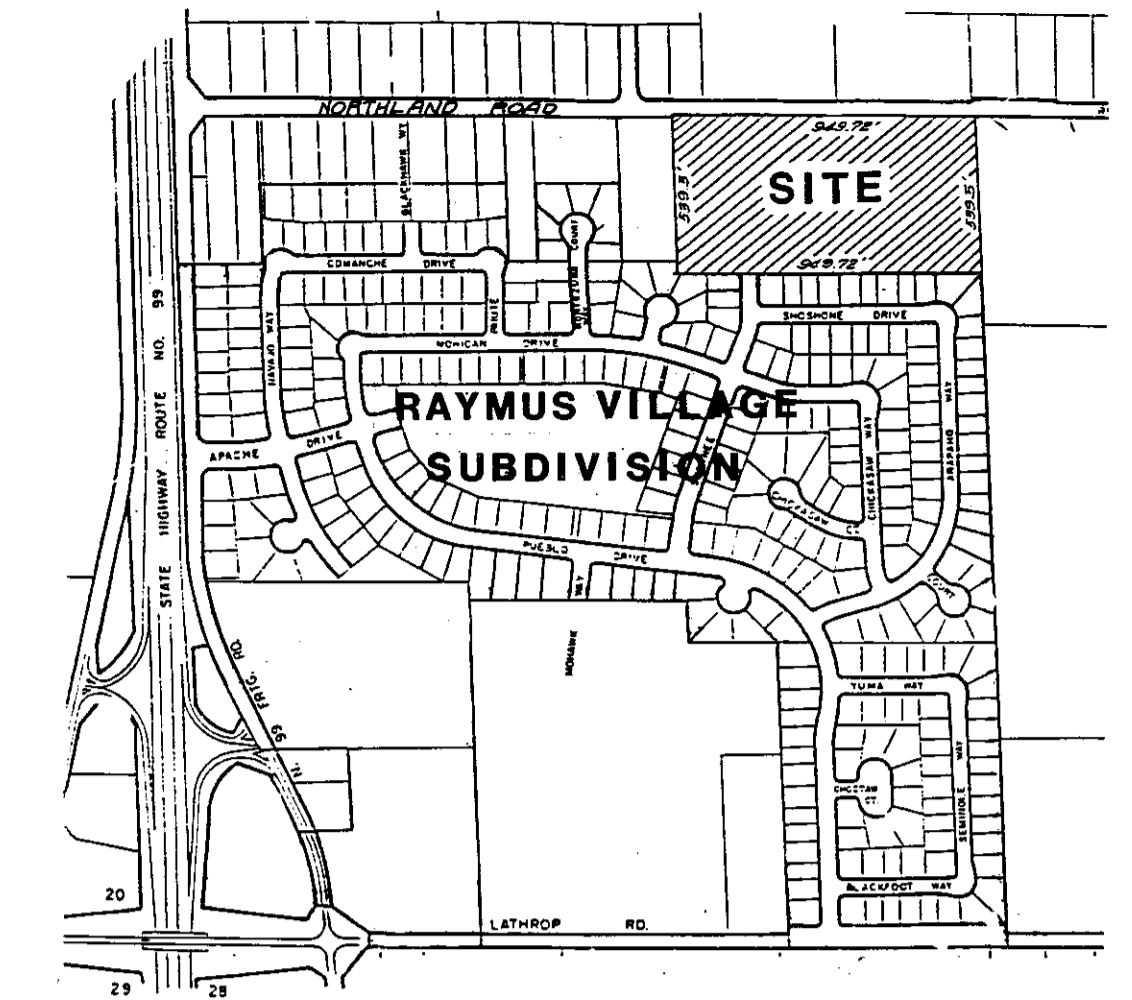
CONTRACTOR AGREES THAT HE SHALL ASSUME SOLE AND COMPLETE RESPONSIBILITY FOR JOB SITE CONDITIONS DURING THE COURSE OF CONSTRUCTION OF THIS PROJECT INCLUDING SAFETY OF ALL PERSONS AND PROPERTY. THAT THIS REQUIREMENT SHALL APPLY CONTINUOUSLY AND SHALL NOT BE LIMITED TO NORMAL WORKING HOURS; AND THAT THE CONTRACTOR SHALL DEFEND, INDEMNIFY AND HOLD THE OWNER AND ENGINEER HARMLESS FROM ANY AND ALL LIABILITY REAL OR ALLEGED, IN CONNECTION WITH THE PERFORMANCE OF WORK ON THIS PROJECT, EXCEPTING FOR LIABILITY ARISING FROM THE SOLE NEGLIGENCE OF THE OWNER OR ENGINEER.

GENERAL NOTES

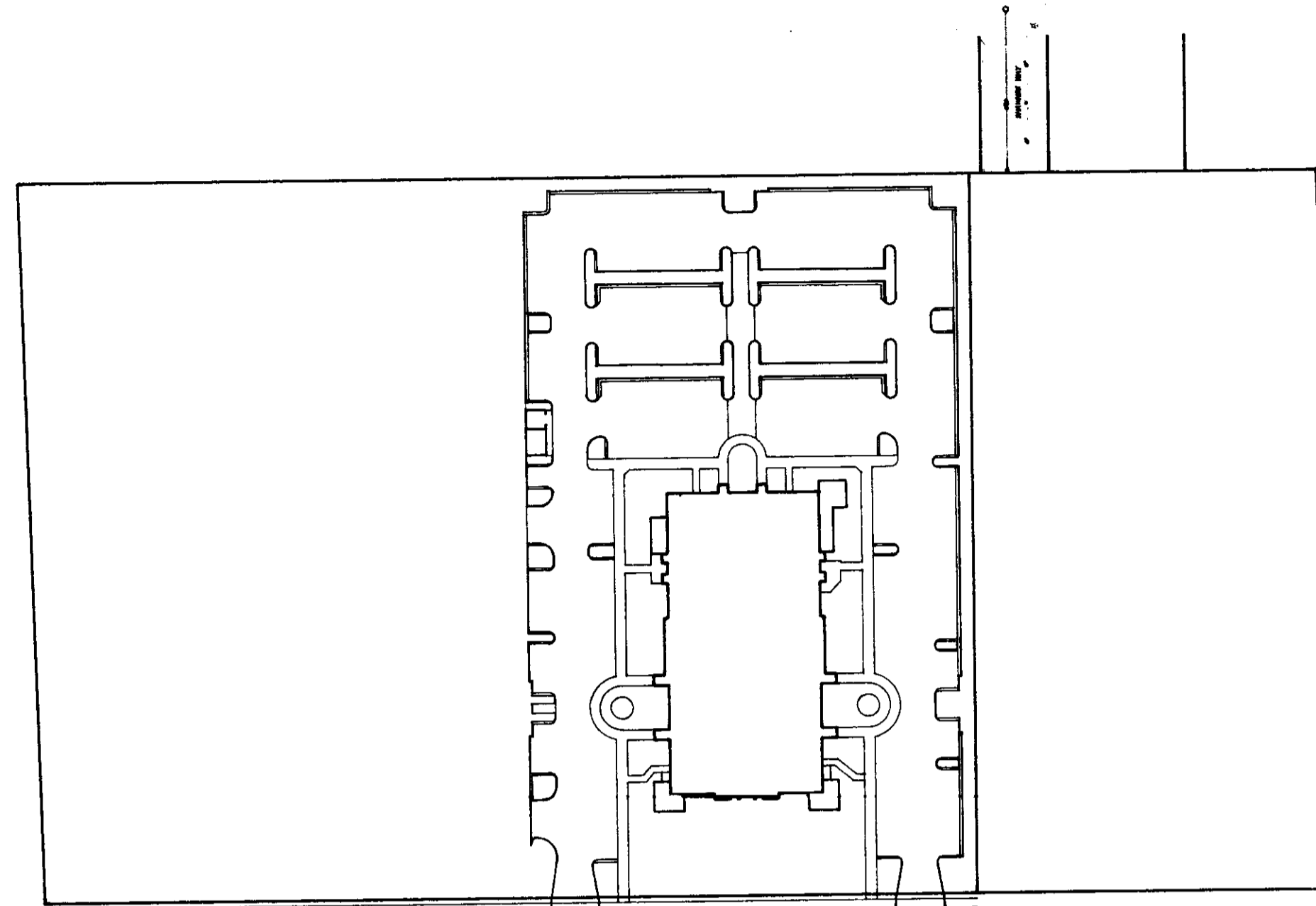
- ALL CONSTRUCTION AND MATERIALS SHALL BE IN ACCORDANCE WITH THE LATEST EDITION OF THE COUNTY OF SAN JOAQUIN STANDARD CONSTRUCTION SPECIFICATIONS AND IMPROVEMENT STANDARDS. THE STANDARD DRAWINGS OF THE IMPROVEMENT STANDARDS SHALL SUPERSEDE THOSE OF THE STANDARD CONSTRUCTION SPECIFICATIONS WHERE DISCREPANCIES EXIST.
- THE CONTRACTOR SHALL NOTIFY THE COUNTY OF SAN JOAQUIN IMMEDIATELY UPON COMPLETION OF CONSTRUCTION STAKING.
- THE CONTRACTOR SHALL NOTIFY THE COUNTY OF SAN JOAQUIN TWO (2) WORKING DAYS PRIOR TO COMMENCING WORK. (PHONE (209) 468-3022)
- THE COUNTY OF SAN JOAQUIN IS A MEMBER OF THE UNDERGROUND SERVICE ALERT (USA) ONE-CALL PROGRAM. THE CONTRACTOR OR ANY SUBCONTRACTOR FOR THIS CONTRACT SHALL NOTIFY MEMBERS OF USA TWO (2) WORKING DAYS IN ADVANCE OF PERFORMING EXCAVATION WORK BY CALLING TOLL FREE (800) 642-2444.
- THE CONTRACTOR SHALL BE RESPONSIBLE FOR THE PROTECTION OF ALL EXISTING SURVEY MONUMENTS AND OTHER SURVEY MARKERS DURING CONSTRUCTION. ALL SUCH MONUMENTS OR MARKERS DESTROYED DURING CONSTRUCTION SHALL BE REPLACED AT THE CONTRACTOR'S EXPENSE.
- THE TYPES, LOCATIONS, SIZES AND/OR DEPTHS OF EXISTING UNDERGROUND UTILITIES AS SHOWN ON THESE PLANS WERE OBTAINED FROM SOURCES OF VARYING RELIABILITY. THE CONTRACTOR IS CAUTIONED THAT ONLY ACTUAL EXCAVATION WILL REVEAL THE TYPES, EXTENT, SIZES, LOCATIONS AND DEPTHS OF SUCH UNDERGROUND UTILITIES. A REASONABLE EFFORT HAS BEEN MADE TO LOCATE AND DELINEATE ALL KNOWN UNDERGROUND UTILITIES. HOWEVER WARREN CONSULTING ENGINEERS CAN ASSUME NO RESPONSIBILITY FOR THE COMPLETENESS OR ACCURACY OF ITS DELINEATION OF SUCH UNDERGROUND UTILITIES, NOR FOR THE EXISTENCE OF OTHER BURIED OBJECTS OR UTILITIES WHICH MAY BE ENCOUNTERED BUT WHICH ARE NOT SHOWN ON THESE DRAWINGS.
- PROVIDE ONE TRAFFIC LANE AT ALL TIMES. WHERE CONSTRUCTION FALLS WITHIN EXISTING PUBLIC TRAVELED WAYS, CONTRACTOR SHALL MAINTAIN THIRTEEN (13) FOOT MINIMUM TRAFFIC LANES FROM 7:00 A.M. TO 8:00 A.M. AND ALL LANES OF TRAFFIC SHALL BE OPEN AND UNOBSTRUCTED FROM 3:30 P.M. UNTIL 8:30 A.M. THE NEXT WORKING DAY. PLACE CONTINUOUS TRAFFIC DELINEATORS AT FIFTY (50) FOOT INTERVALS ADJACENT TO A TRAFFIC LANE IF A DIFFERENCE OF TWO (2) INCHES EXISTS BETWEEN PAVEMENT AND ANY EXCAVATION.
- PUBLIC SAFETY AND TRAFFIC CONTROL SHALL BE PROVIDED IN ACCORDANCE WITH SAN JOAQUIN COUNTY STANDARDS AND AS DIRECTED BY THE COUNTY INSPECTOR. SAFE VEHICULAR AND PEDESTRIAN ACCESS SHALL BE PROVIDED AT ALL TIME DURING CONSTRUCTION.
- WHENEVER THE WORK AREA IS ADJACENT TO A TRAFFIC LANE AND THERE IS A PAVEMENT CUT OR TRENCH OVER TWO (2) INCHES DEEP, THE CONTRACTOR SHALL MAINTAIN CONTINUOUS BARRICADES SPACED AT APPROXIMATELY 50 FT. INTERVALS. IF THE CUT OR TRENCH IS MORE THAN 10 FEET FROM A TRAFFIC LANE, THE SPACING MAY BE GREATER BUT NOT TO EXCEED 200 FEET.
- NO PAVEMENT WORK WILL OCCUR WITHIN THE ROAD RIGHT OF WAY PRIOR TO COMPLETION OF UTILITY POLE RELOCATION.
- ASPHALTIC CONCRETE SURFACES SHALL BE CUT TO A NEAT, STRAIGHT LINE PARALLEL WITH THE STREET CENTERLINE AND THE EXPOSED EDGE TACKED WITH EMULSION PRIOR TO PAVING. THE EXPOSED BASE MATERIAL SHALL BE GRADED RECOMPACTED AND RESEALED PRIOR TO PAVING.
- THE CONTRACTOR SHALL OBTAIN AN ENCROACHMENT PERMIT FROM SAN JOAQUIN COUNTY DEPARTMENT OF PUBLIC WORKS PRIOR TO THE START OF ANY OPERATIONS IN THE COUNTY RIGHT-OF-WAY.
- CONTRACTOR AGREES THAT HE SHALL ASSUME SOLE AND COMPLETE RESPONSIBILITY FOR JOB SITE CONDITIONS DURING THE COURSE OF CONSTRUCTION OF THIS PROJECT, INCLUDING SAFETY OF ALL PERSONS AND PROPERTY; THAT THIS REQUIREMENT SHALL APPLY CONTINUOUSLY AND NOT BE LIMITED TO NORMAL WORKING HOURS; AND THAT THE CONTRACTOR SHALL DEFEND, INDEMNIFY AND HOLD HARMLESS, THE COUNTY OF SAN JOAQUIN, ITS ELECTED OFFICIALS, OFFICERS, EMPLOYEES, AND AGENTS FROM ANY AND ALL CLAIMS, COSTS OF LITIGATION, DAMAGES, AND ATTORNEY'S FEES, FOR PERSONAL INJURY OR PROPERTY DAMAGE OF WHATEVER NATURE WHICH ARE CLAIMED TO HAVE OCCURRED DURING THE TERM OF THIS PROJECT.

IMPROVEMENT PLANS FOR NORTHLAND ROAD

LDS CHURCH - 2ND AND 3RD WARDS AND MANTECA STAKE



VICINITY MAP
NO SCALE



SITE PLAN
1"=100'

SHEET INDEX

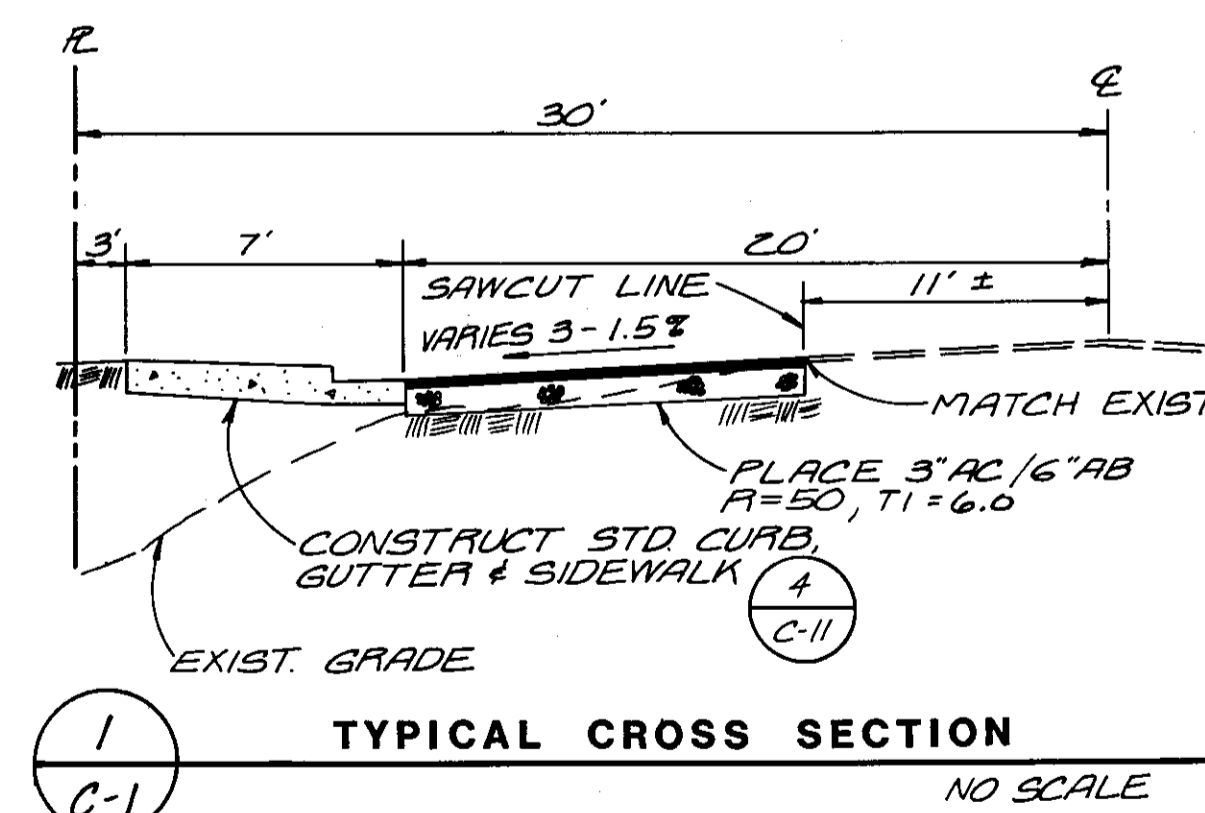
- 1 COVER SHEET
- 2 GRADING AND DRAINAGE PLAN

ABBREVIATIONS

- A.B. AGGREGATE BASE
- A.C. ASPHALTIC CONCRETE
- A.P.N. ASSESSOR'S PARCEL NUMBER
- B.C. BEGIN CURVE
- C.L. CENTERLINE
- CL. CLASS
- CONC. CONCRETE
- CONST. CONSTRUCT
- C.P. CONCRETE PIPE
- D.I. DROP INLET
- DIA. DIAMETER
- DRWG. DRAWING
- E.P. EDGE OF PAVEMENT
- ESMT. EASEMENT
- E. FLOWLINE
- F.H. FIRE HYDRANT
- GR. GRATE ELEVATION
- INV. PIPE INVERT ELEVATION
- J.P. JOINT POLE
- LT. LEFT
- LF. LINEAL FEET
- OH. OVERHEAD
- P.C.C. PORTLAND CEMENT CONCRETE
- P.L. PROPERTY LINE
- P.F. POWER POLE
- P.V.C. POLYVINYLCHLORIDE
- P.U.E.L. PUBLIC UTILITY EASEMENT LINE
- RIM. MANHOLE RIM ELEVATION
- RT. RIGHT
- R.C.P. REINFORCED CONCRETE PIPE
- R/W. RIGHT OF WAY
- SAN. SANITARY SEWER
- S.D. STORM DRAIN
- S.D.M.H. STORM DRAIN MANHOLE
- S.M.H. SEWER MANHOLE
- S.S. SEWER SERVICE
- STD. STANDARD
- T.C. TOP OF CURB
- T.W. TOP OF WALK ELEVATION
- U.G. UNDERGROUND
- V.C.P. VITRIFIED CLAY PIPE
- W. WITH
- W/O. WITHOUT
- W.S. WATER SERVICE
- W.V. WATER VALVE

LEGEND

- PROPOSED GRADING SYMBOLS**
- 12" SD (SIZE AND FLOW INDICATED) STORM DRAIN
 - STORM DRAIN MANHOLE
 - DROP INLET
 - 99.99 ELEVATION
 - FF 100.00 FINISHED FLOOR ELEVATION
 - PAD 99.33 BUILDING PAD ELEVATION
 - CONCRETE SIDEWALK
 - DRAINAGE FLOW
 - SWALE
 - SLOPE
 - RETAINING WALL
 - TREE TO BE REMOVED
 - UTILITY POLE
 - EXISTING ELEVATION
- PROPOSED SANITARY SEWER SYMBOLS**
- 4" SS (SIZE AND FLOW INDICATED) SANITARY SEWER
 - SANITARY MANHOLE
 - SEWER SERVICE
 - SANITARY SEWER CLEANOUT
 - FLUSHER BRANCH
- PROPOSED WATER SYMBOLS**
- 8" W WATER LINE + SIZE
 - GATE VALVE AND BOX
 - WATER METER
 - FIRE HYDRANT ASSEMBLY
 - FIRE PROTECTION ASSEMBLY
- ELECTRICAL SYMBOLS**
- 1" CONDUIT UNLESS OTHERWISE SHOWN.
 - SLASH MARKS INDICATE NUMBER OF CONDUITS REQUIRED. NO. 10AWG THW MINIMUM OR AS OTHERWISE SHOWN.



TYPICAL CROSS SECTION
NO SCALE

Director of Public Works
County of San Joaquin, California
Henry M. Hiras R.C.E. 2123
Date

AS-BUILTS 12-18-92 *Greg D. Hiras* R.C.E. 28362

OFF-SITE COVER SHEET

COVER SHEET

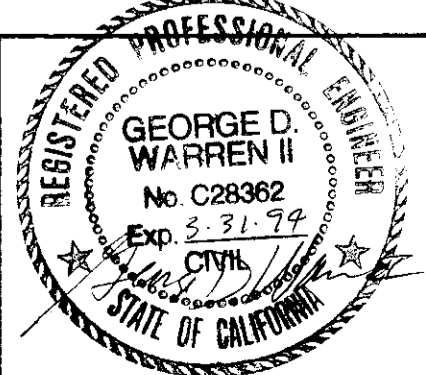
NORTHLAND ROAD
LDS CHURCH - 2ND AND 3RD WARDS AND MANTECA STAKE

COUNTY OF SAN JOAQUIN

A.P.N. 197-100-01	DESIGNED: GW
BENCHMARK NO. _____ ELEV. _____	DRAWN: TF/MS
NORTHLAND & FRONTAGE RD. 4" BRASS CAP & 6" CONC. STAMPED Q-325.	CHECKED: GW
ELEV = 38.412, COUNTY DATUM	DATE: AUGUST 8, 1991

NO.	REVISION	APP'D	DATE

HORIZONTAL SCALE: AS SHOWN
VERTICAL SCALE: NA
JOB NO.: P18401



WCE
WARREN CONSULTING ENGINEERS
5777 MADISON AVENUE, SUITE 1200
SACRAMENTO, CA 95841 (916) 349-8225

Nichols Melburg
Rossetto AIA
7844 Madison Ave. Suite 150
Fair Oaks, California, 95628
ARCHITECTURE

C1

P18401.DWG 8/20/91