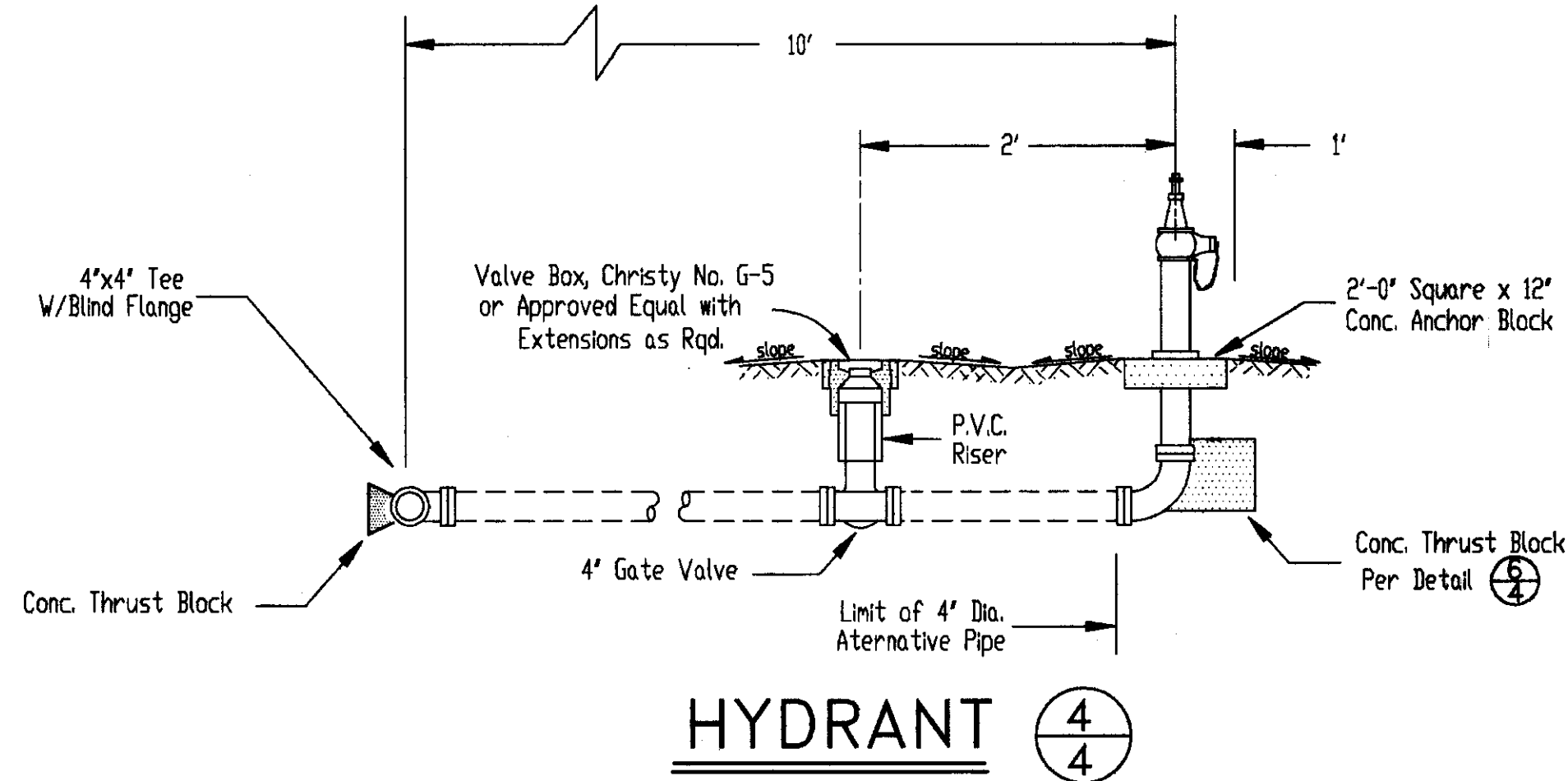
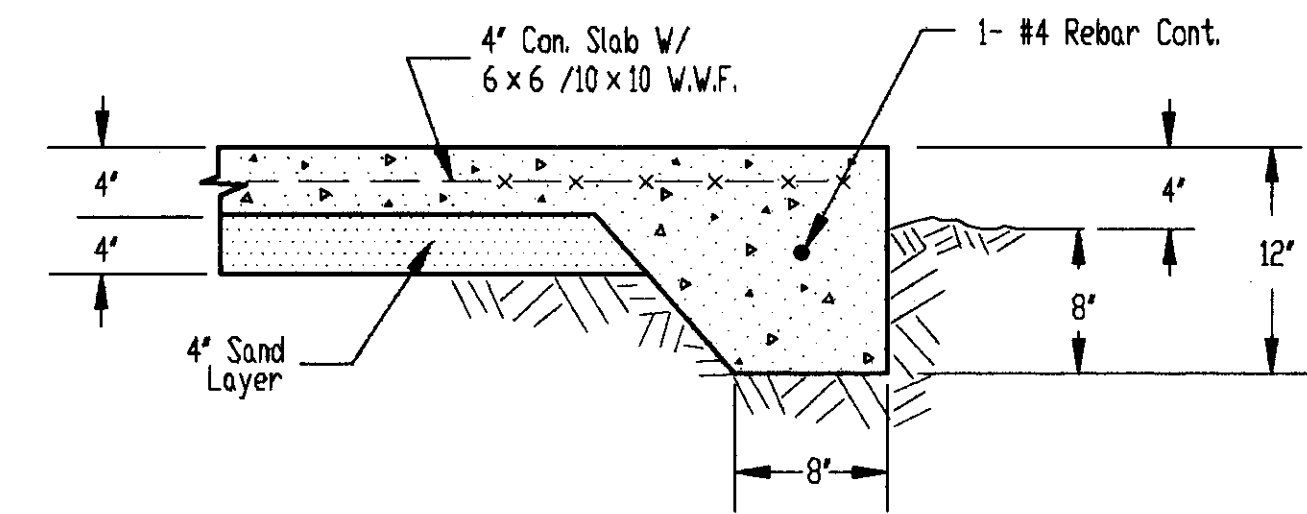


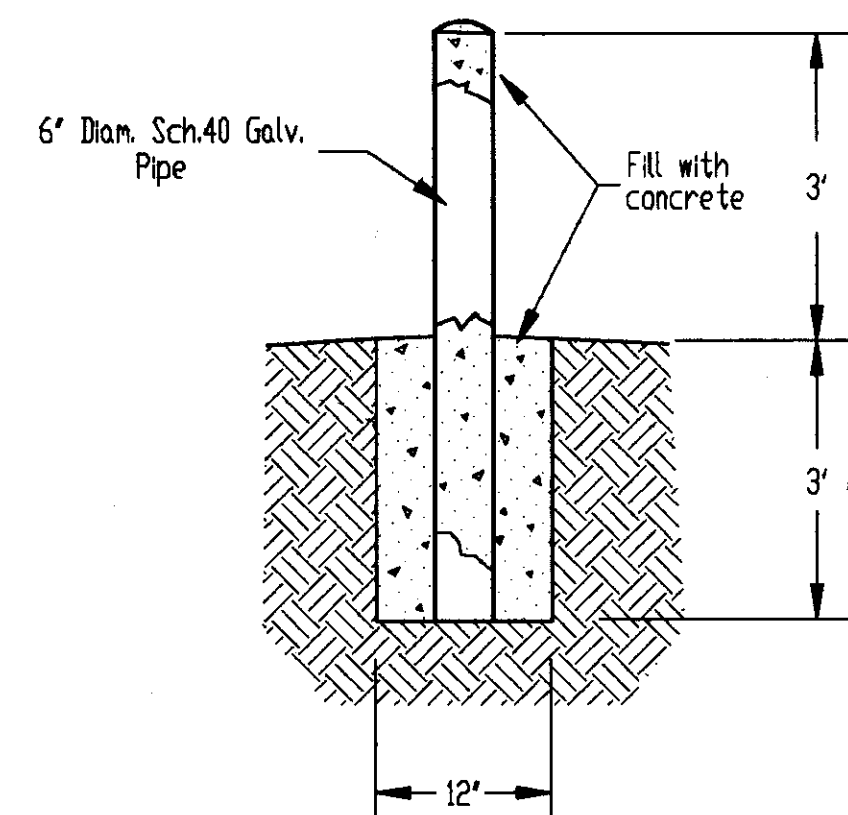
ONE-LINE DIAGRAM (5/4)



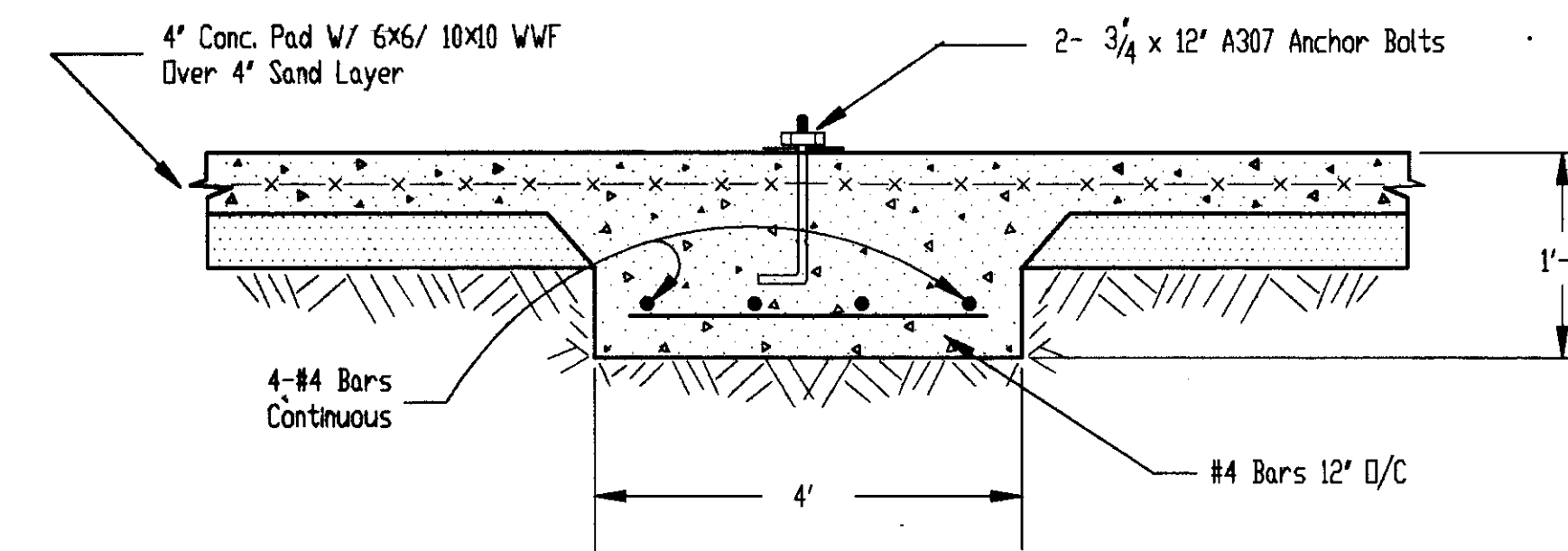
HYDRANT (4/4)



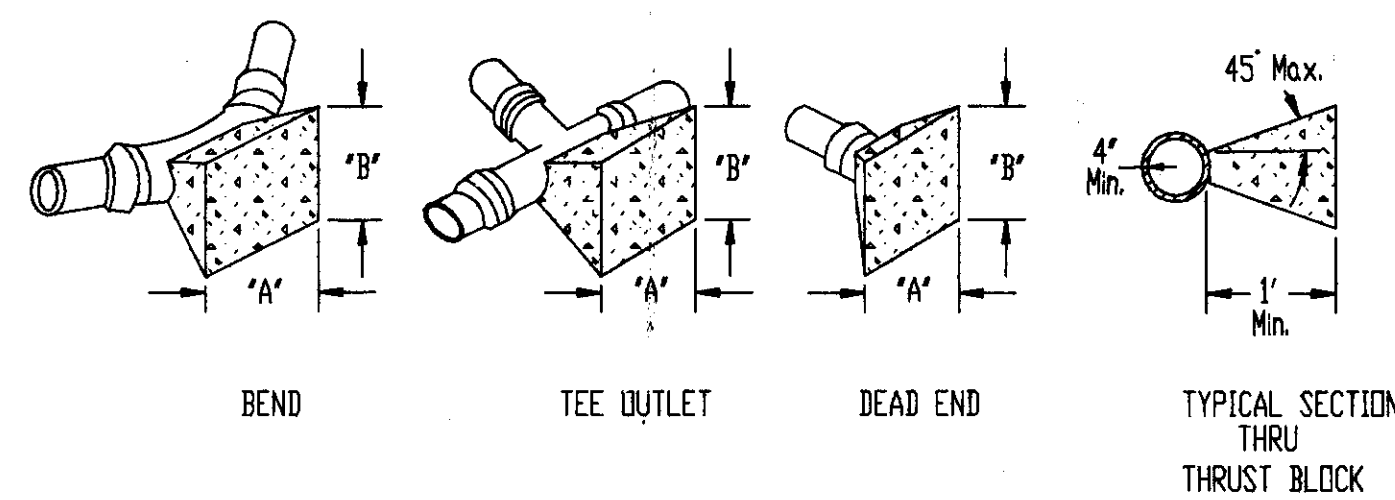
SECTION (1/4)



GUARD POST (3/4)



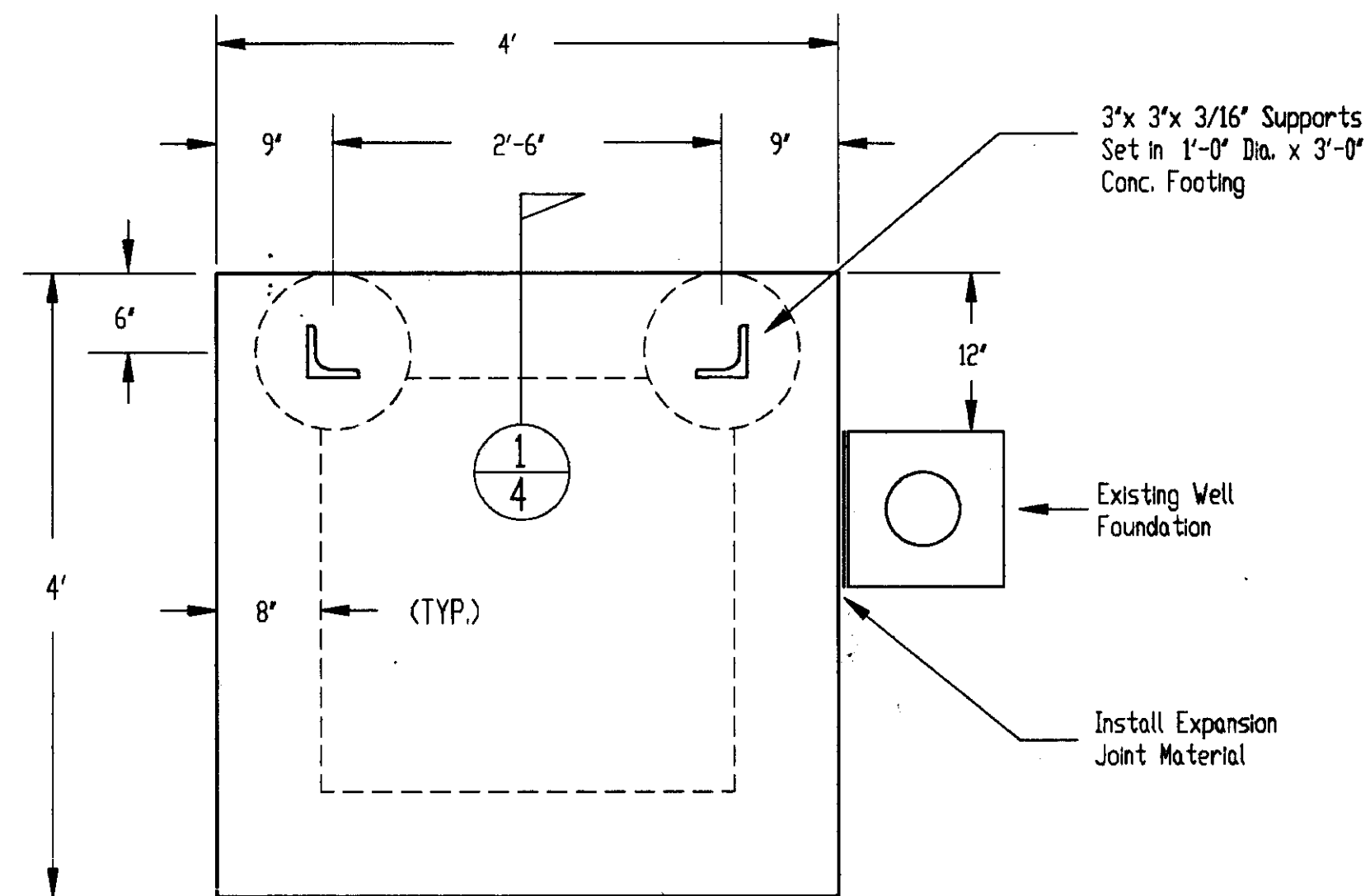
SECTION (2/4)



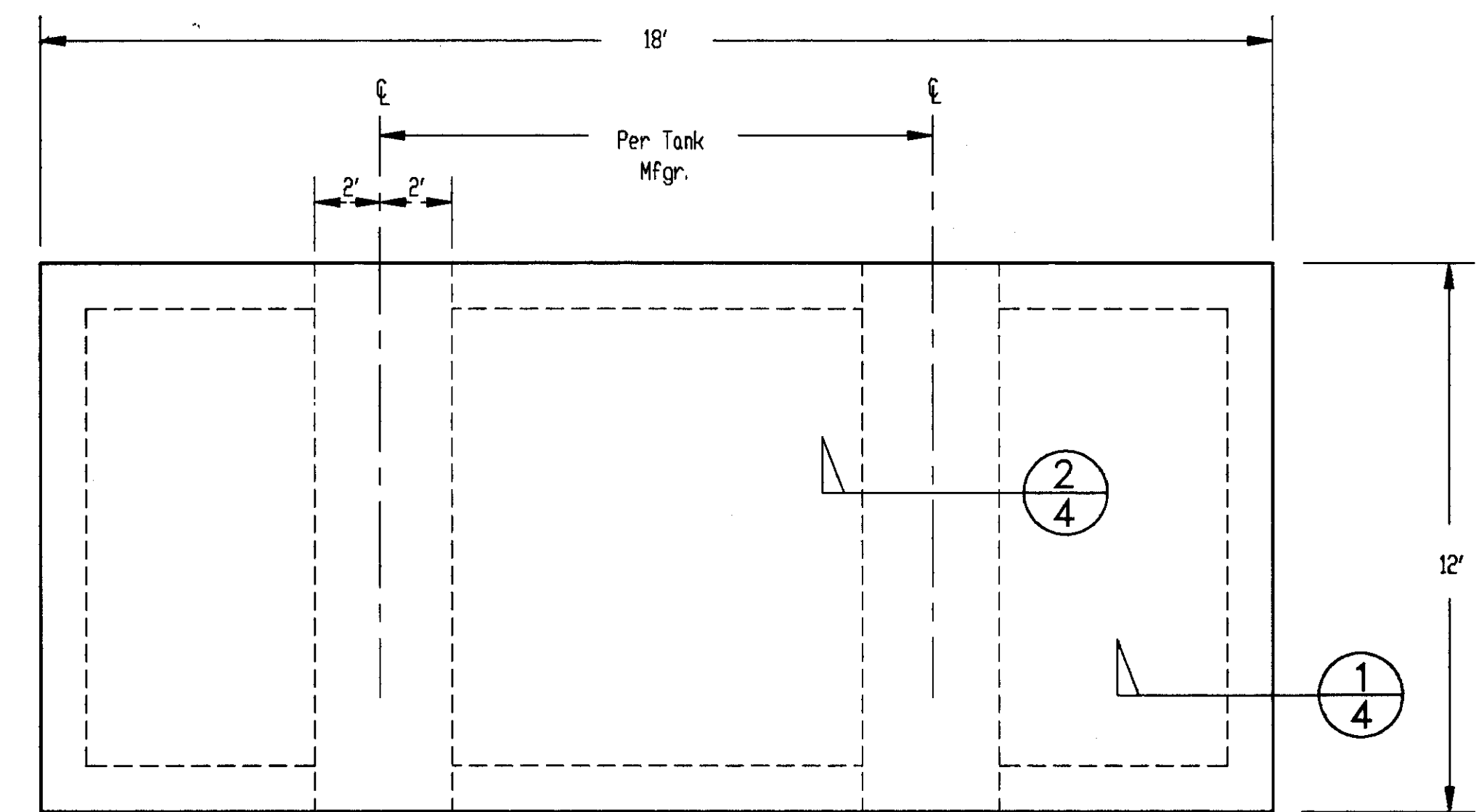
FITTINGS	4" LINE		10" LINE		8" LINE		12" LINE	
	"A"	"B"	"A"	"B"	"A"	"B"	"A"	"B"
22 1/2	1'-6"	1'-6"	3'-0"	2'-0"	3'-0"	2'-0"	3'-0"	2'-0"
45	2'-0"	2'-0"	4'-0"	3'-0"	4'-0"	3'-0"	4'-0"	3'-0"
90	3'-0"	2'-6"	5'-6"	4'-0"	5'-6"	4'-0"	5'-6"	4'-0"
TEE OUTLET	3'-0"	2'-0"	4'-0"	4'-0"	4'-0"	4'-0"	4'-0"	4'-0"
DEAD END	3'-0"	2'-0"	4'-0"	4'-0"	4'-0"	4'-0"	4'-0"	4'-0"

- NOTES:
- All thrust blocks shall be poured against undisturbed soil and shall be Class "B" Concrete.
 - Thrust block dimensions were calculated to allow a soil bearing value of 1,000 pounds per square foot.

THRUST BLOCK DETAILS (6/4)



CONTROL PAD DETAIL (B/4)



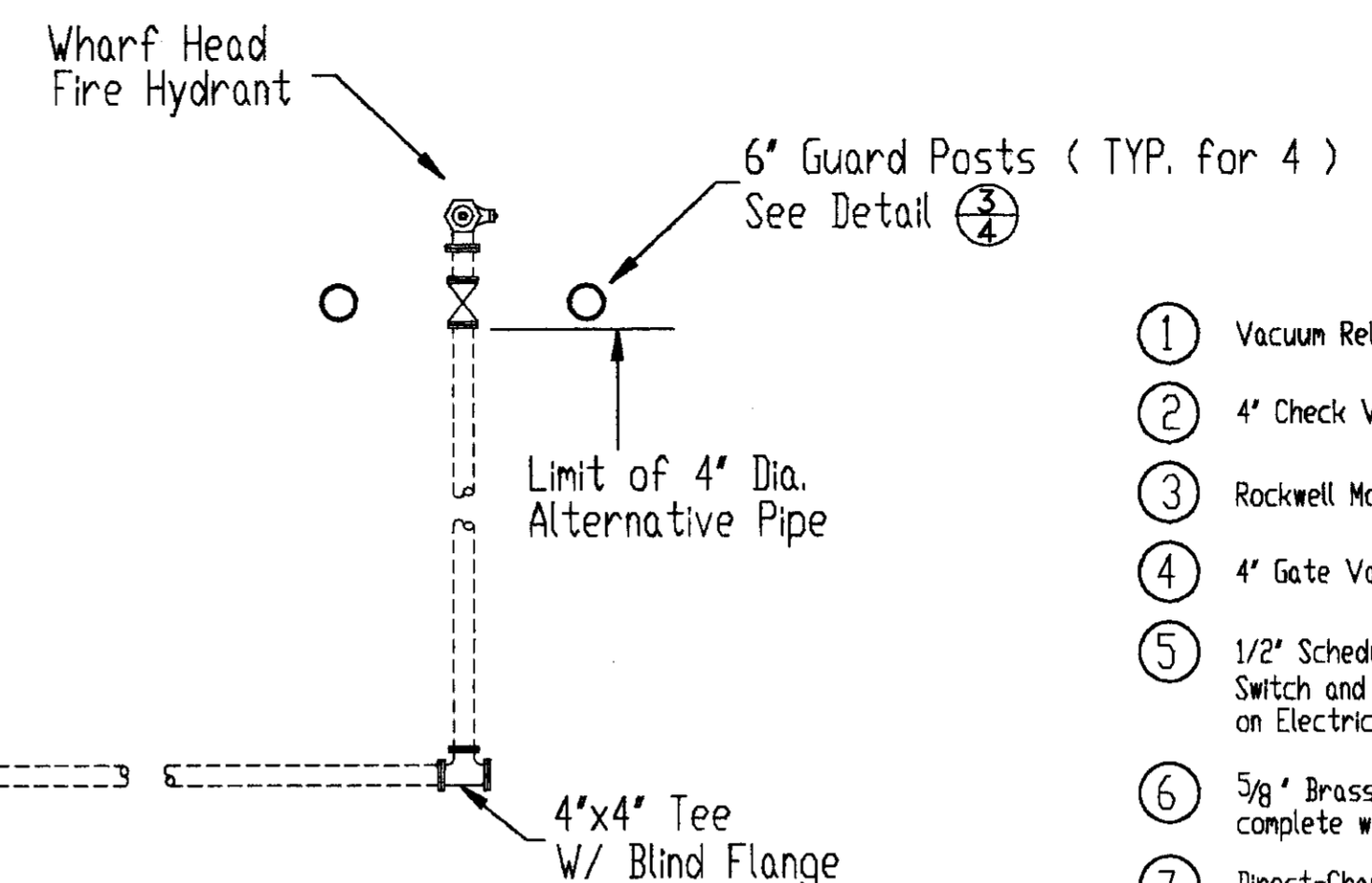
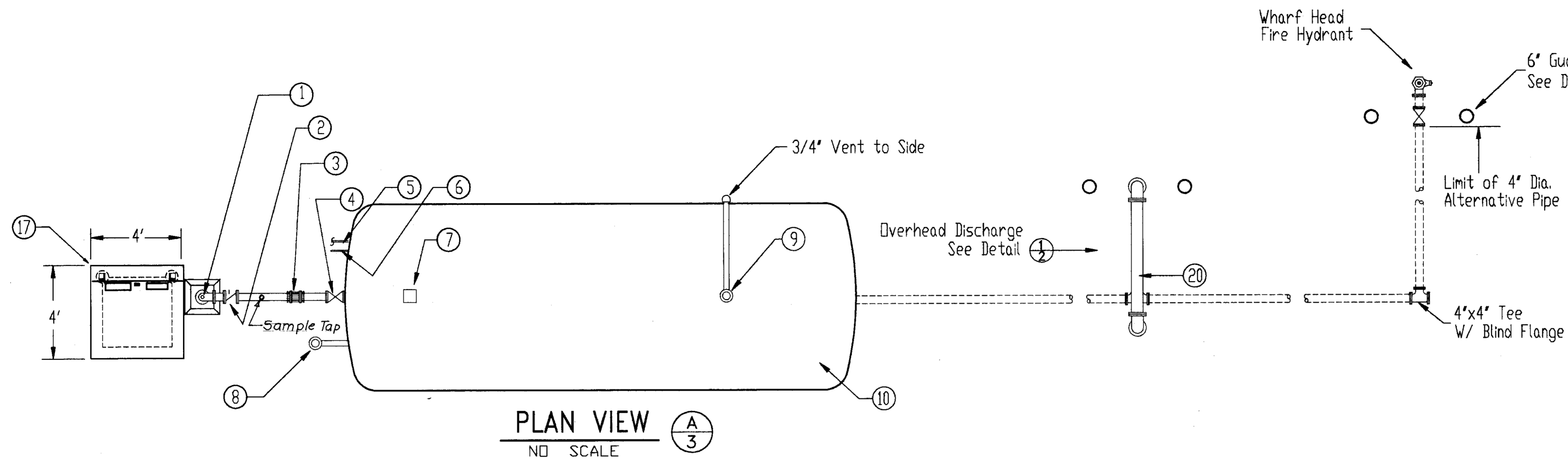
TANK PAD DETAIL (A/4)

RECORD DRAWING

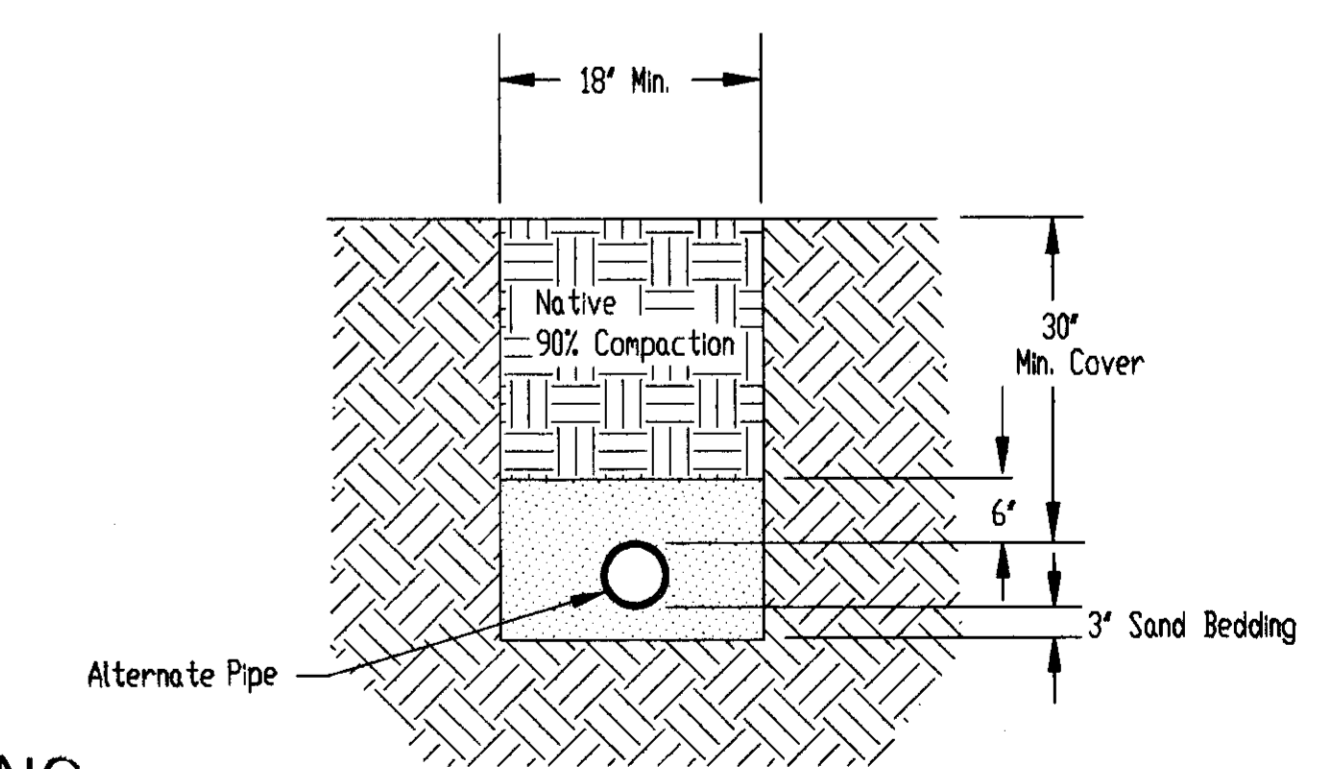
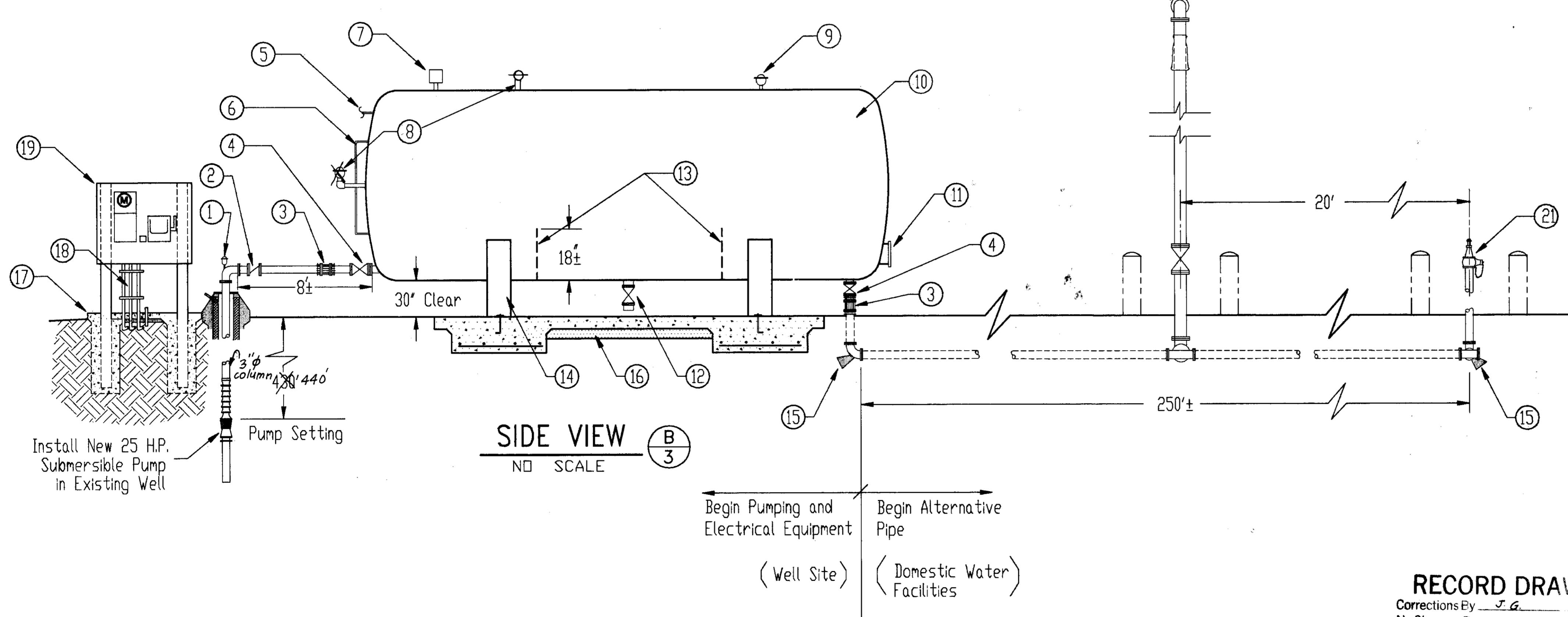
Corrections By: J.G.
 No Changes By:
 Date: 7-31-92
 Any Person Using This Drawing Should Verify All Information By Inspecting The Site Of Work

HENS

DRAWN BY	DATE	PROJECT ENGINEER	DATE	CHECKED BY	DATE	SUBMITTED	DATE	APPROVAL	RECOMMENDED	DATE	COUNTY OF SAN JOAQUIN	SCALE: NONE	CONSTRUCTION DETAILS	PROJECT	CORRAL HOLLOW SANITARY LANDFILL WATER WELL PHASE II	SHEET NO.	TOTAL SHEETS
Ped. Trevino	2/6/92	Dean Nelson	2/6/92			Manuel Meiro	2/1/92			2/6/92						4	4
FILE NAME	NO.	DRAWER	SHEET NO.	C.A.D. FILE													
				ENCHWELL\SHEET4													



- ① Vacuum Relief Valve, Appco No. 142, or equal.
- ② 4" Check Valve, Kennedy No. 125, or equal.
- ③ Rockwell Model No. 411 coupling, or equal.
- ④ 4" Gate Valve W/Hand Wheel.
- ⑤ 1/2" Schedule 40 Pipe Run to Pressure Switch and Pressure Gauge Mounted on Electrical Panel.
- ⑥ 5/8" Brass Water Gauge, No. 610, with 36" centers, complete with 2-Gate Valves and PVC Guard over Sight Tube.
- ⑦ Direct-Charging Air Compressor, Whitewater Mfg., Air Right Model No. 610, or equal. Requires 1 1/2" NPT. Female fitting.
- ⑧ Air Release Valve, Armstrong No. AR-21, or equal. Extend 3/4" Pipe to low water level.
- ⑨ Pressure Relief Valve, Baily No. 118, or equal.
- ⑩ 8,000 Gallon Hydro-Pneumatic Tank (8' Diam. x 21' ±)
- ⑪ 12" x 16" Manhole
- ⑫ 4" Dia. Flanged Outlet with Gate Valve and Flanged x Threaded 6" Nipple.
- ⑬ 3/8" Steel Baffle Plates with 4" Sand Hole at Bottom.
- ⑭ Integral Tank Supports with 2-3/4" Dia. x 12" ASTM A307 Anchor Bolts. Provide 7/8" Dia. Holes in Supports.
- ⑮ Thrust block, typical. Refer to Detail ④.
- ⑯ 4" Conc. Pad for Tank. Refer to Detail ④.
- ⑰ 4" Conc. pad for Electrical Service. Refer to Detail ④.
- ⑱ Electrical Service riser and conduits. Provide support as necessary (Unistrut, or equal).
- ⑲ Electric Service Panel and controls. Refer to Detail ④. 3/4" CCX Plywood with 2x4 Backing as Required.
- ⑳ 6" Dia. Overhead Discharge. Refer to Detail ④. Compensation for Installing the Overhead Discharge, including Guard Posts, as shown on the Plans shall be Considered as Included in the Contract Price Paid For 4" Dia. Alternative Pipe and no other Compensation shall be Provided.
- ㉑ Wharf Head Fire Hydrant. James Jones No. J-344 HP, or equal.

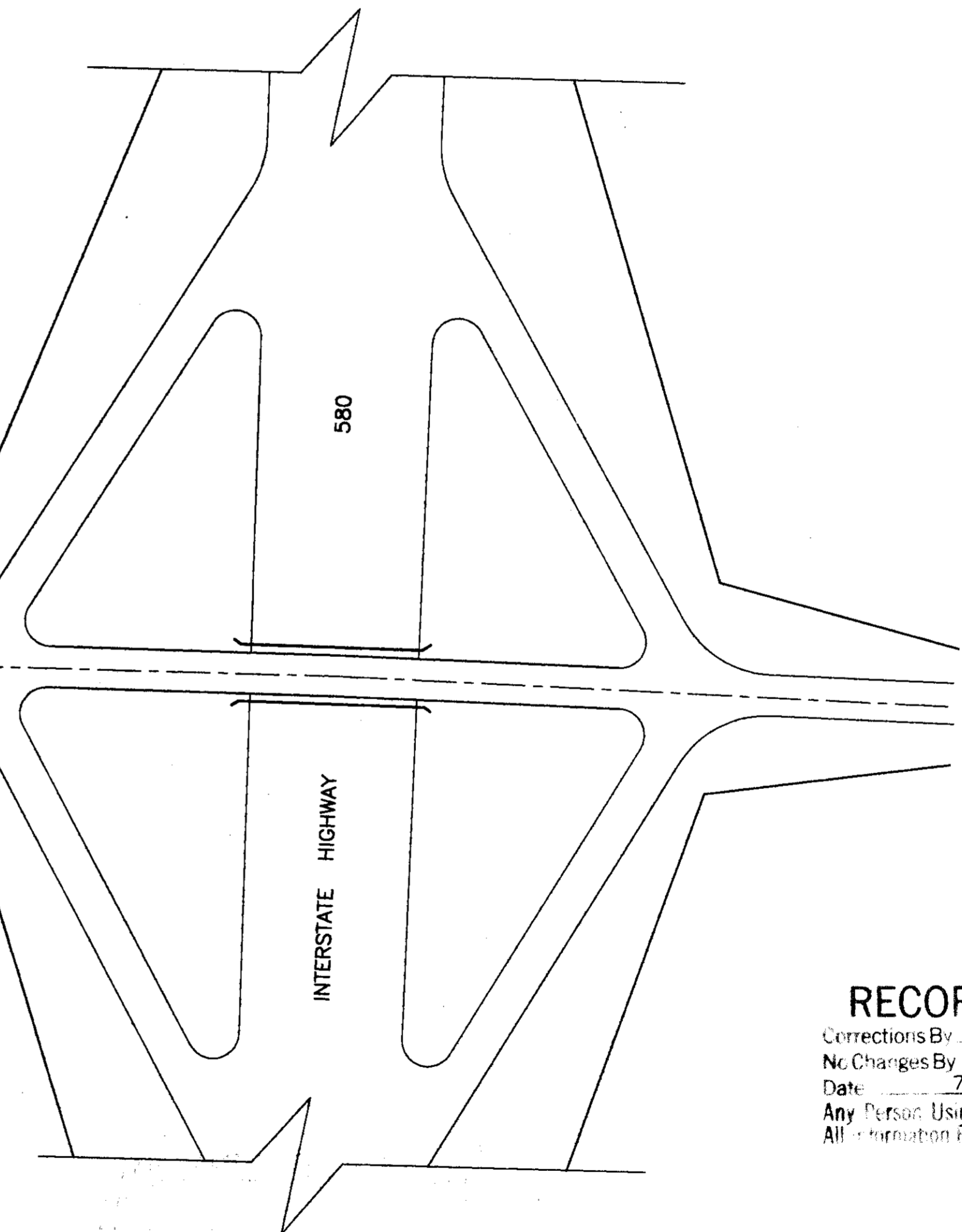
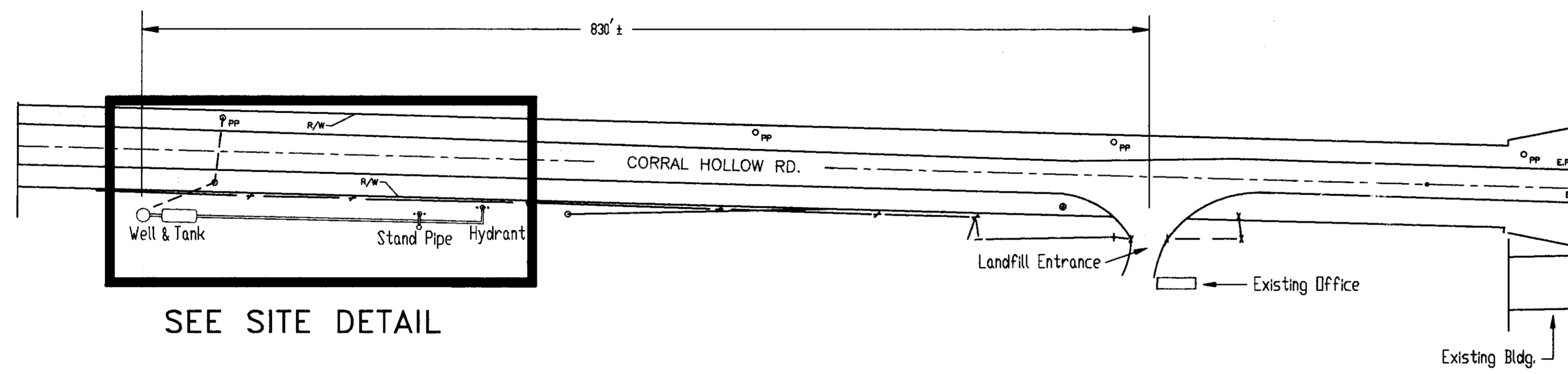
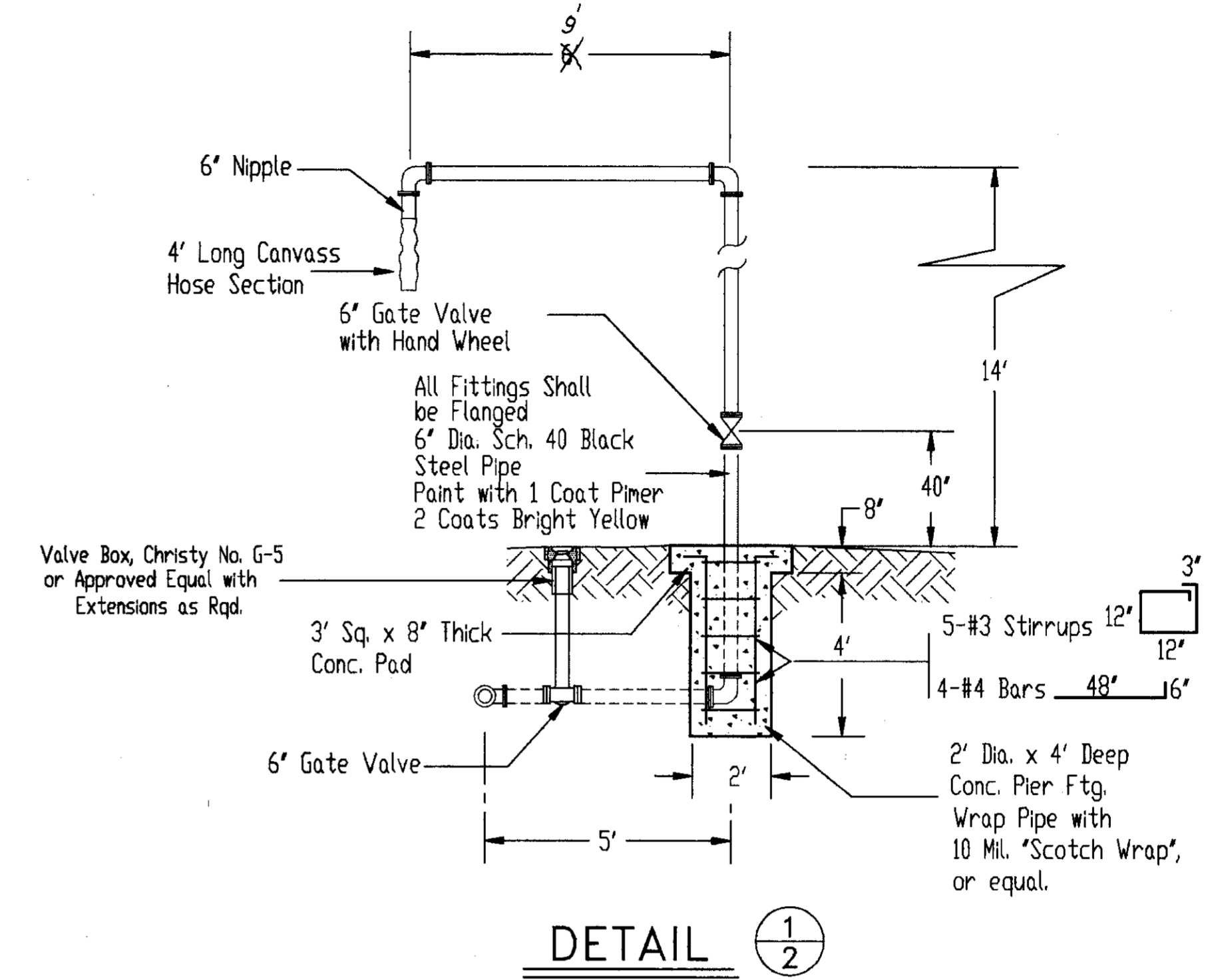
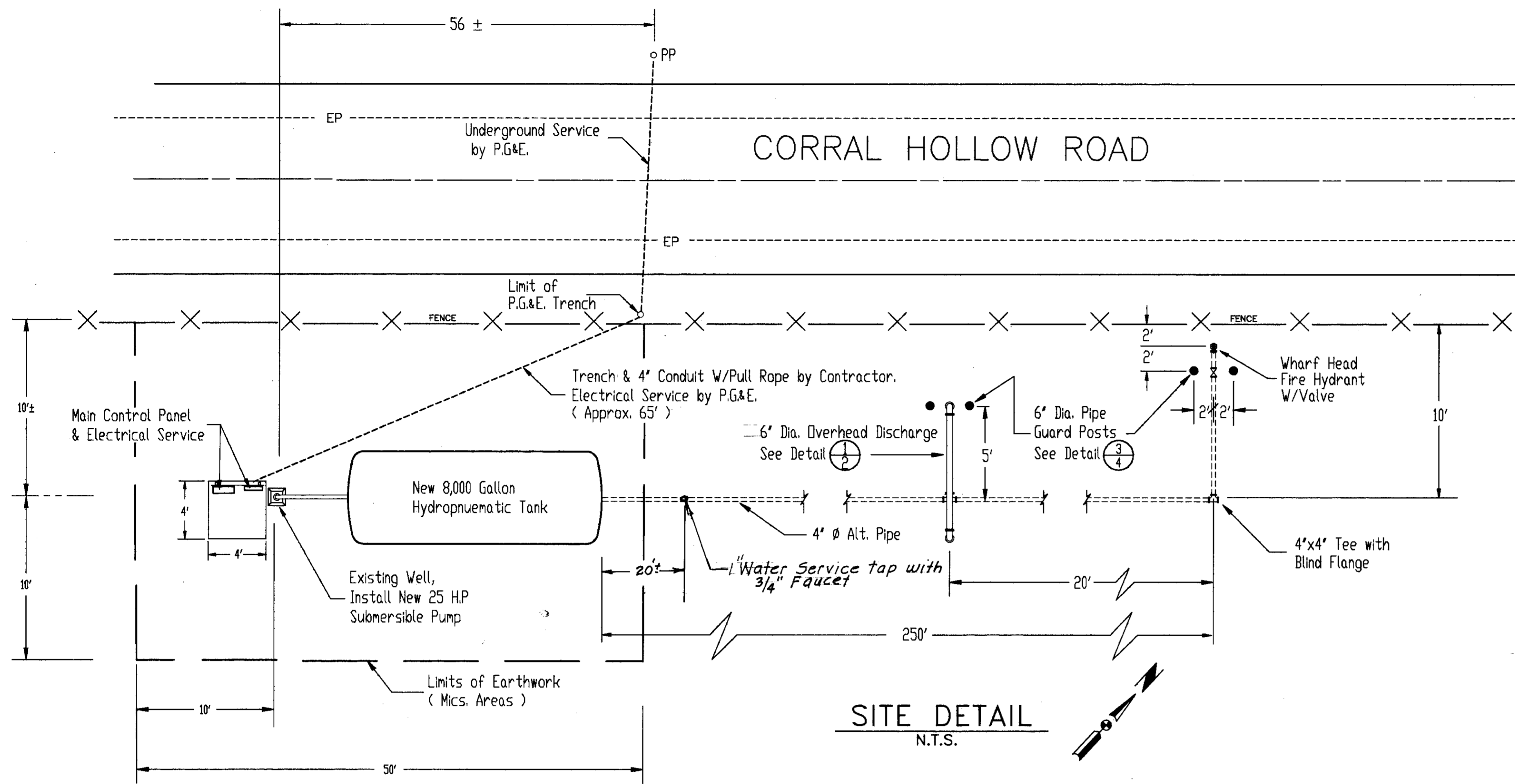


RECORD DRAWING
 Corrections By J.G.
 No Changes By _____
 Date 7-31-92
 Any Person Using This Drawing Should Verify All Information By Inspecting The Site Of Work

TYP. TRENCH DETAIL

SHEETS

DRAWN BY <i>Punch Turiso</i>	DATE <i>2/6/92</i>	PROJECT ENGINEER <i>Dean Allen</i>	DATE <i>7/6/92</i>	CHECKED BY	DATE	SUBMITTED	DATE	APPROVAL	RECOMMENDED	DATE	COUNTY OF SAN JOAQUIN	SCALE: NONE	TANK & WELL DETAIL	PROJECT	CORRAL HOLLOW SANITARY LANDFILL WATER WELL PHASE II	SHEET NO. 3	TOTAL SHEETS 4
FILE NAME	NO.	DRAWER	SHEET NO.	C.A.D. FILE													
				E:\CHWELL\SHEETS													



RECORD DRAWING
 Corrections By: J.G.
 No Changes By:
 Date: 7-31-92
 Any Person Using This Drawing Should Verify All Information Respect to The Site of Work

SUN 2/10/92

DRAWN BY <i>Arnell Tavares</i>	DATE 2/4/92	PROJECT ENGINEER <i>Dean J. Gil</i>	DATE 2/6/92	CHECKED	DATE	SUBMITTED <i>Donna M. Harris</i>	DATE 2/14/92	APPROVED <i>A. P. ...</i>	DATE 2/16/92	COUNTY OF SAN JOAQUIN	SITE PLAN	PROJECT	CORRAL HOLLOW SANITARY LANDFILL WATER WELL PHASE II	SHEET NO. 2	TOTAL SHEETS 4
FILE NAME	DRAWER	SHEET NO.	ACAD	EACH WELL SHEET 2											

INDEX OF SHEETS

SHEET NO.	DESCRIPTION
1	TITLE SHEET
2	SITE PLAN
3	TANK & WELL DETAIL
4	CONSTRUCTION DETAILS

COUNTY OF SAN JOAQUIN
 DEPARTMENT OF PUBLIC WORKS
 STOCKTON, CALIFORNIA
 PROJECT PLANS FOR

COUNTY OF SAN JOAQUIN

Submitted February 10, 1992

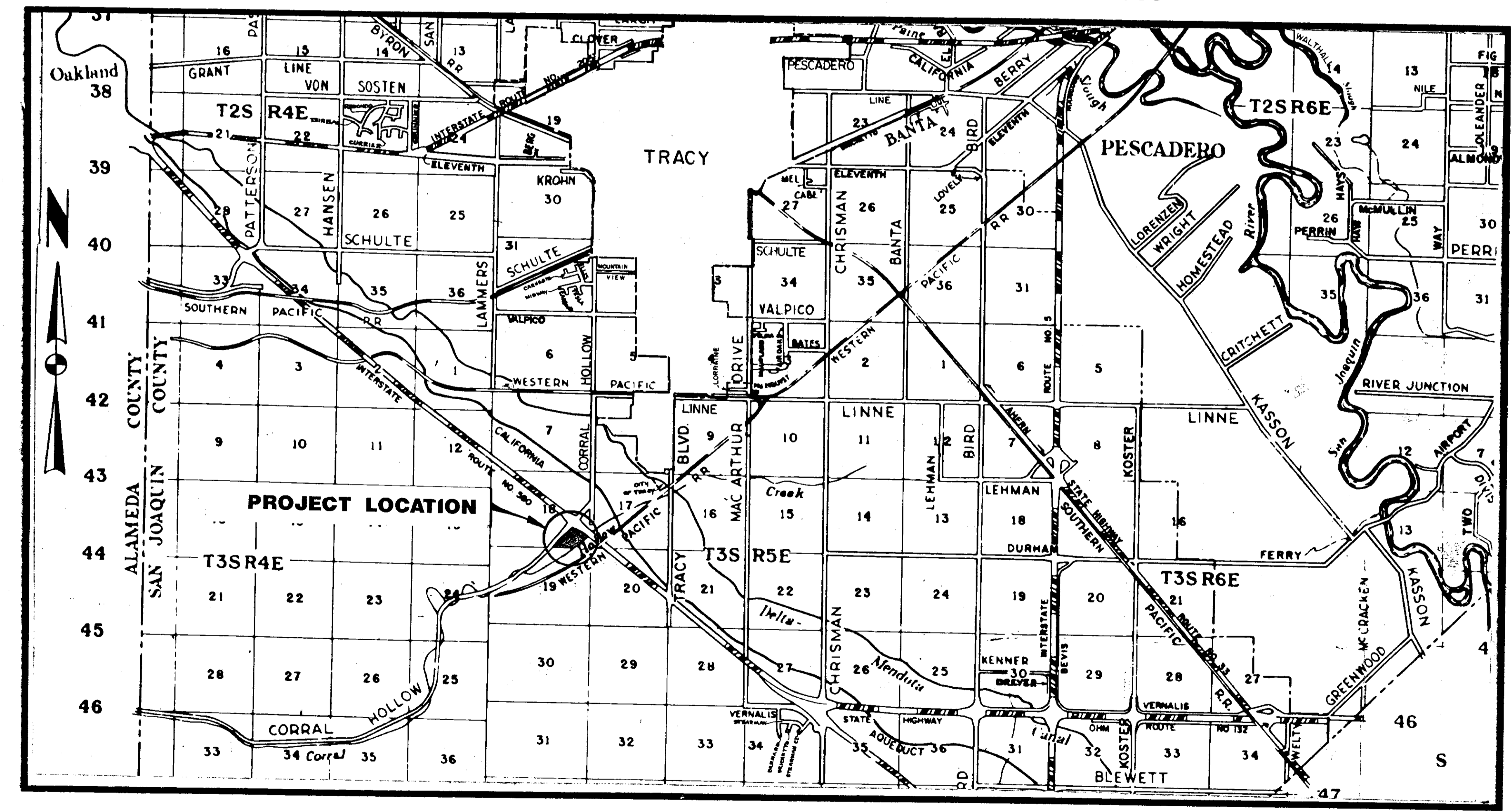
Henry M. Hirata

HENRY M. HIRATA
 R.C.E. 21258
 Director of Public Works



**CORRAL HOLLOW SANITARY
 LANDFILL WATER WELL
 PHASE II**

TO BE SUPPLEMENTED BY STANDARD PLANS DATED JANUARY 1988



PROJECT LOCATION MAP
 NO SCALE

ABBREVIATIONS -

- A.B. = Aggregate Base
- A.C. = Asphalt Concrete
- A.S. = Aggregate Subbase
- Bit. Cd. = Bituminous Coated
- C.L. = Center Line
- C.P. = Concrete Pipe
- C.S.P. = Corrugated Steel Pipe
- C.S.P.A. = Corrugated Steel Pipe Arch
- DIAM. = Diameter
- D.I. = Drain Inlet
- Dr. = Driveway
- E.P. = Edge of Pavement
- N.R.C.P. = Non-Reinforced Concrete Pipe
- FL. = Flow Line
- L.F. = Linear Feet
- M.H. = Manhole
- O.G. = Original Ground
- P.C.C. = Portland Cement Concrete
- Pen. Tr. = Penetration Treatment
- PL. = Property Line
- P.M.S. = Plant Mixed Surfacing
- R.C.P. = Reinforced Concrete Pipe
- R & D = Remove and Dispose
- R & S = Remove and Salvage
- R/W = Right of Way
- S-Dr. = Side Drain
- Alt. = Alternative
- W.W. = Walkway
- S.P. = Standard Plans
- GALV. = Galvanized
- TYP. = Typical
- X-Dr. = Cross Drain

RECORD DRAWING

Corrections By _____
 No Changes By _____
 Date _____
 Any Person Using This Drawing Should Verify
 All Information by Inspecting The Site of Work

SU 216 27

NO.	DESCRIPTION	DEWN BY	CHEK BY	APP BY	DATE

PROJECT ENGINEER	DATE	SENIOR ENGINEER	DATE	APPROVAL	RECOMMENDED BY	DATE

FILE NAME	DRAWER	SHEET NO.	C.A.D. FILE

EACHWELL\TITLESHT