

**DILLON ENGINEERING**  
 ENGINEERING PLANNING SURVEYING  
 1820 W. Kettleman Lane  
 Lodi, California 95242  
 (209) 334-6613

**OLIVE STREET IMPROVEMENT PLAN**

**WOODBRIDGE, CA.**

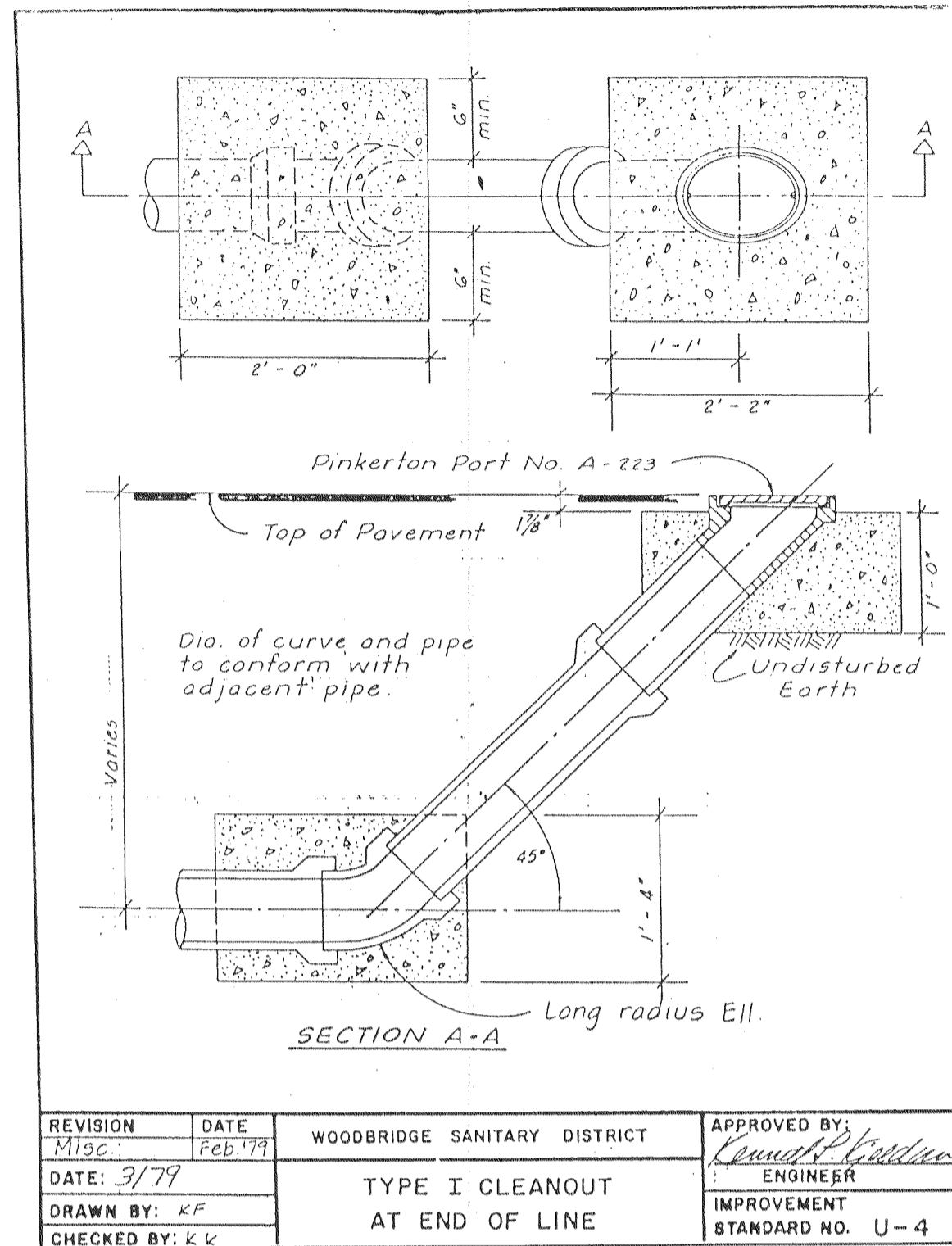
AS-BUILT

REV. NO.	DESCRIPTION	DATE	SCALE:	APPROVED BY:	SHEET NO.
	DESIGNED BY: JM				4
	DRAWN BY: JM				OF 9 SHEETS
	CHECKED BY:				JOB NO.
	AS BUILT BY: JM 12-6-92				9037

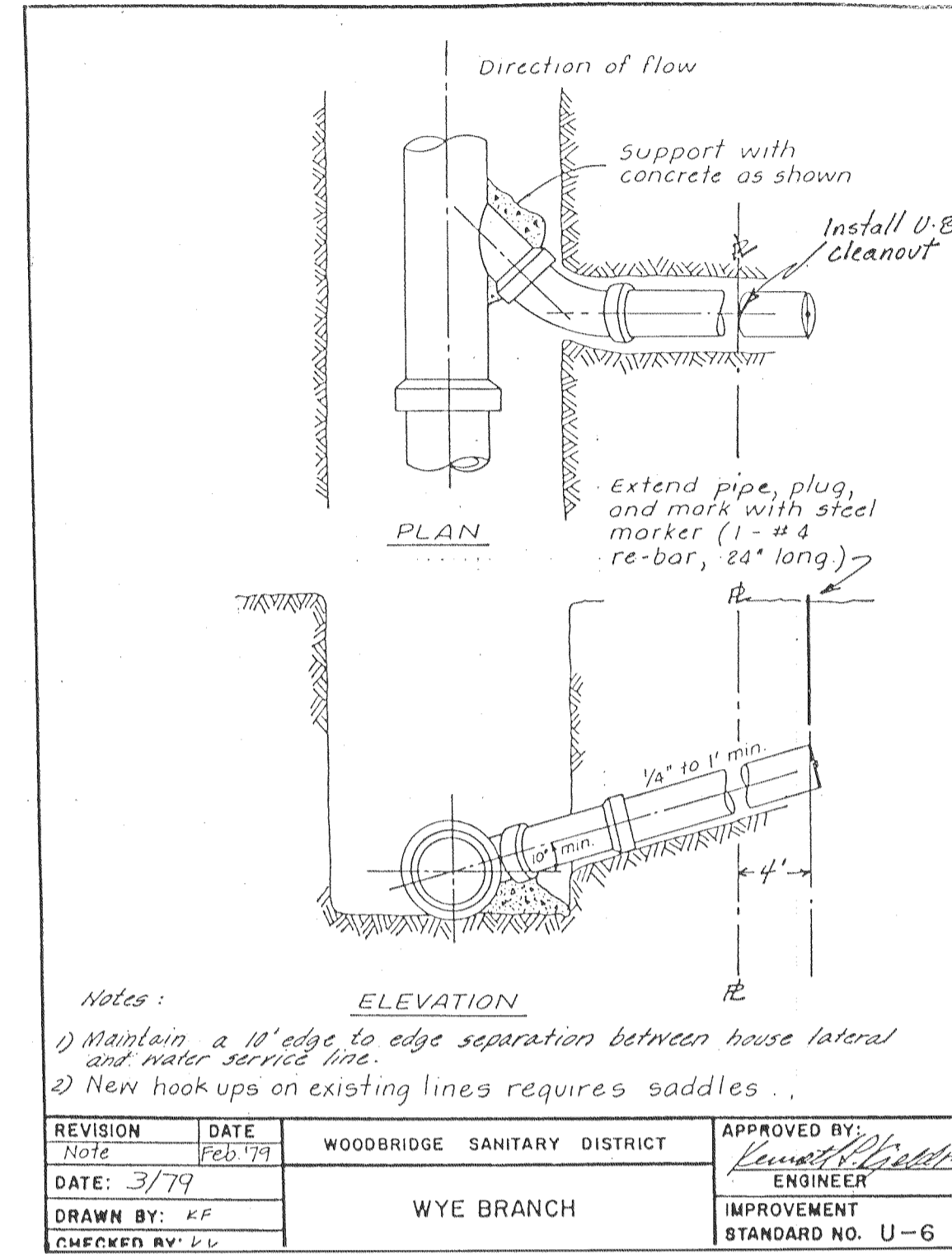
SHERMANS

**GENERAL NOTES:**

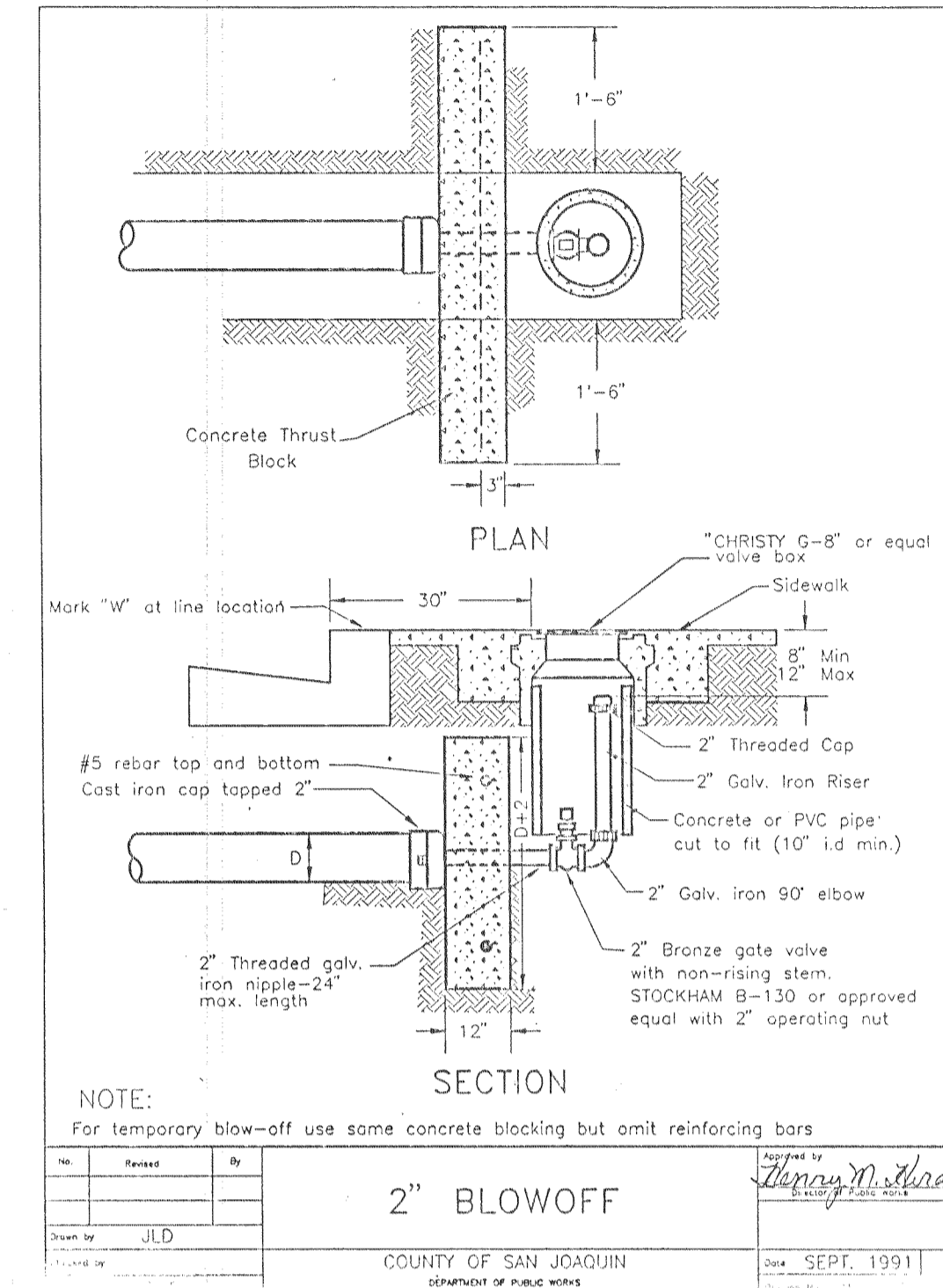
- CONTRACTOR SHALL RECEIVE AN APPROVED SET OF PLANS AND SPECIFICATIONS PRIOR TO BEGINNING CONSTRUCTION.
- THE EXISTING UNDERGROUND UTILITIES WERE PLOTTED FROM AVAILABLE RECORDS. THE CONTRACTOR SHALL BE RESPONSIBLE FOR CONTACTING ALL UTILITY AGENCIES TO MARK THEIR FACILITIES IN THE FIELD BEFORE ANY EXCAVATION. THE CONTRACTOR SHALL NOTIFY AND COORDINATE ALL WORK WITH ANY AGENCY REQUIRING REMOVAL OR RELOCATION OF THEIR UTILITIES. PACIFIC BELL, P. G. & E., LODI CABLE T. V., WOODBRIDGE SANITARY DISTRICT AND MOKELUMNE ACRES MAINTENANCE DISTRICT. U.S.A. (800) 642-2444.
- CONTRACTOR AGREES THAT HE SHALL ASSUME SOLE AND COMPLETE RESPONSIBILITY FOR JOB SITE CONDITIONS DURING THE COURSE OF CONSTRUCTION OF THIS PROJECT, INCLUDING SAFETY FOR ALL PERSONS AND PROPERTY; THAT THIS REQUIREMENT SHALL APPLY CONTINUOUSLY AND NOT BE LIMITED TO NORMAL WORKING HOURS AND THAT CONTRACTOR SHALL DEFEND, INDEMNIFY, AND HOLD THE OWNER, COUNTY AND THE ENGINEER HARMLESS FROM ANY AND ALL LIABILITY, REAL OR ALLEGED, IN CONNECTION WITH THE PERFORMANCE OF WORK ON THIS PROJECT, EXCEPTING FOR LIABILITY ARISING FROM THE SOLE NEGLIGENCE OF THE OWNER OR THE ENGINEER.
- NO MATERIALS RESULTING FROM TAPPING PROCEDURES MAY ENTER DISTRICT SEWER.
- PRIOR TO PERFORMING ANY WORK IN CAROLINA STREET, CHESTNUT ST, OLIVE CT, AN ENCROACHMENT PERMIT SHALL BE OBTAINED FROM THE SAN JOAQUIN COUNTY DEPARTMENT OF PUBLIC WORKS.
- INSTALLATION OF ALL SANITARY SEWER IMPROVEMENTS SHALL CONFORM TO THE STANDARDS OF THE WOODBRIDGE SANITARY DISTRICT. ALL SUCH WORK IS SUBJECT TO INSPECTION BY THE DISTRICT ENGINEER. THE CONTRACTOR SHALL NOTIFY DISTRICT ENGINEER 48 HOURS PRIOR TO THE COMMENCEMENT OF ANY WORK ON THE SANITARY SYSTEM. (209) 946-0268.
- PIPE TYPE AND STRENGTHS ALLOWED FOR UNDERGROUND UTILITIES, UNLESS OTHERWISE SPECIFIED ON PLANS, ARE AS FOLLOWS: SANITARY SEWER (SS) - PVC, PER ASTM D3034, SDR35. STORM DRAIN (SD) PVC. WATER - C.P.C.P., ACP, RCP, CSP, P.V.C.
- OWNER SHALL REIMBURSE CONTRACTOR FOR ANY SANITARY DISTRICT INSPECTION FEES OR ENCROACHMENT PERMIT FEES.
- SANITARY SEWER TO BE BACKFILLED WITH CRUSHED ROCK 1' ABOVE THE TOP OF PIPE.



REVISION	DATE	WOODBRIDGE SANITARY DISTRICT	APPROVED BY:
1	Feb 79		<i>Henry M. Hirata</i>
DATE:	3/79	TYPE I CLEANOUT	ENGINEER
DRAWN BY:	KP	AT END OF LINE	IMPROVEMENT
CHECKED BY:	KV		STANDARD NO. U-4



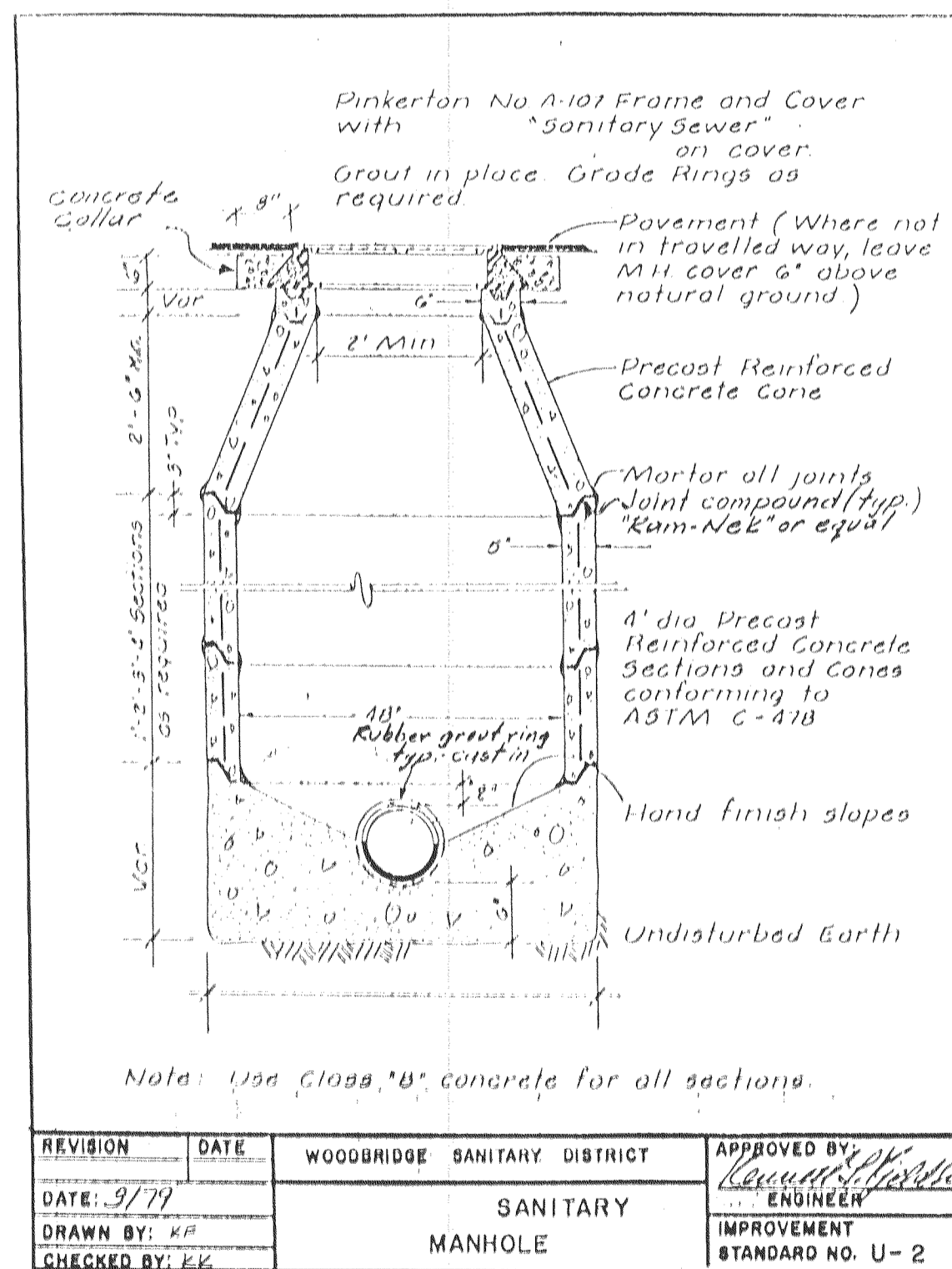
REVISION	DATE	WOODBRIDGE SANITARY DISTRICT	APPROVED BY:
1	Feb 79		<i>Henry M. Hirata</i>
DATE:	3/79	WYE BRANCH	ENGINEER
DRAWN BY:	KP		IMPROVEMENT
CHECKED BY:	KL		STANDARD NO. U-6



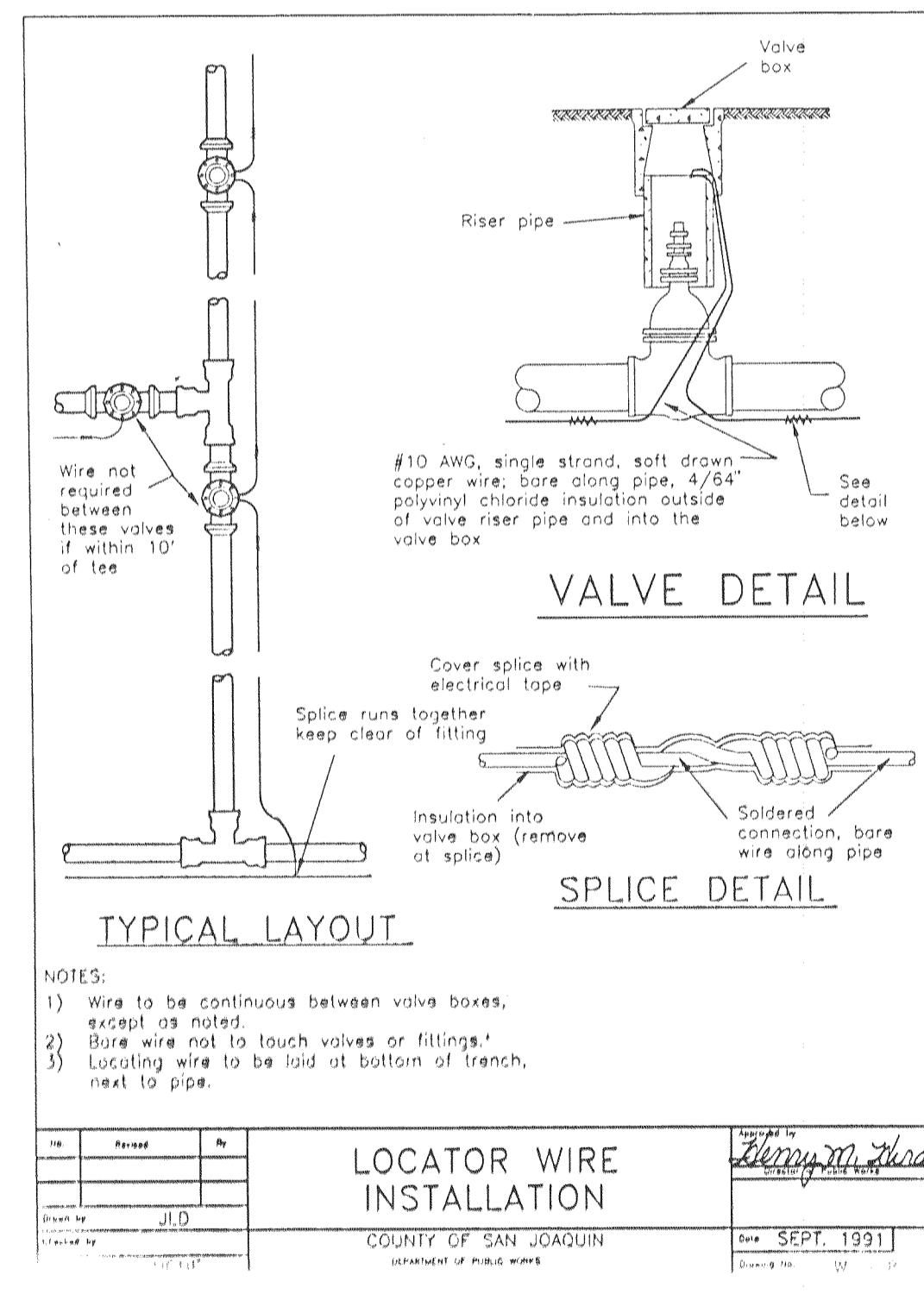
REVISION	DATE	WOODBRIDGE SANITARY DISTRICT	APPROVED BY:
1	Feb 79		<i>Henry M. Hirata</i>
DATE:	3/79	2" BLOWOFF	ENGINEER
DRAWN BY:	JLD		IMPROVEMENT
CHECKED BY:			STANDARD NO. U-6

**NOTES:**

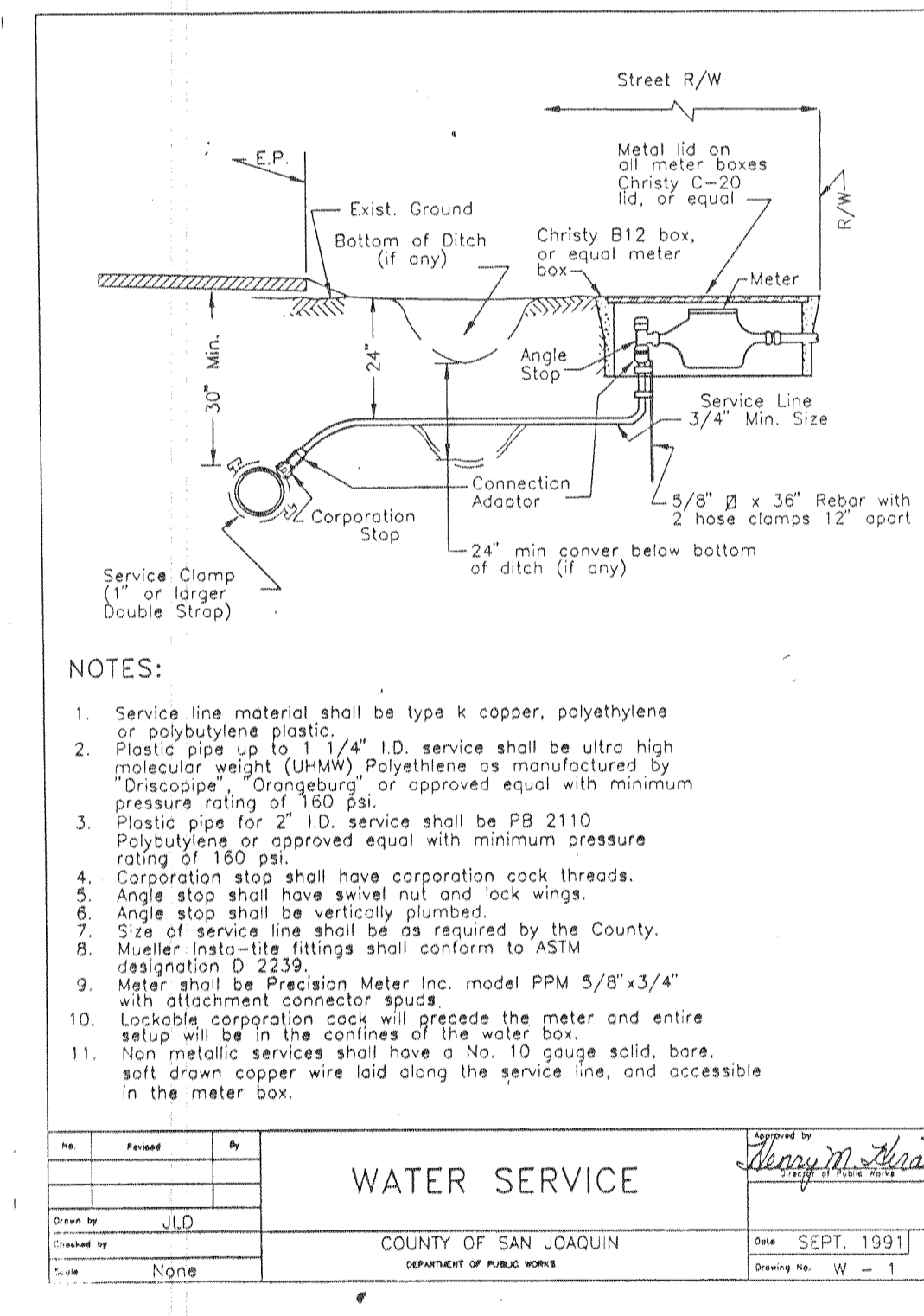
- The structural section shall be determined by the roadway design standards and Standard Drawing No. R-27.
- For curb, gutter and sidewalk details, refer to Standard Drawing No. R-5 and R-6.



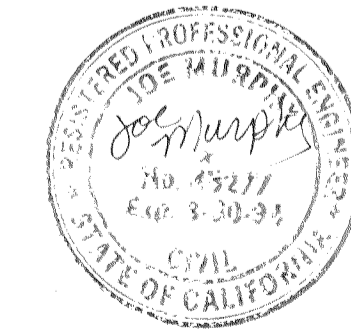
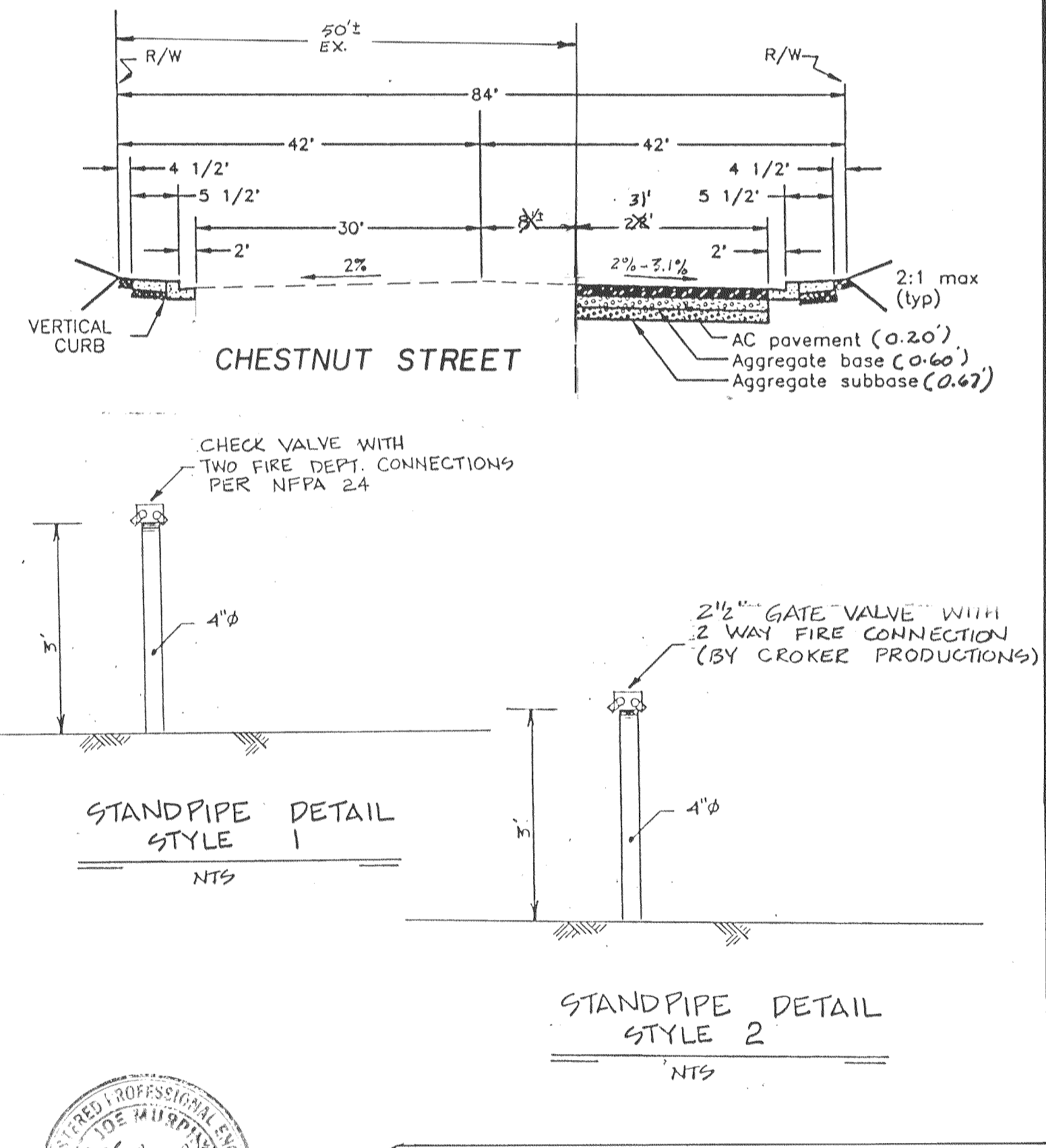
REVISION	DATE	WOODBRIDGE SANITARY DISTRICT	APPROVED BY:
1	Feb 79		<i>Henry M. Hirata</i>
DATE:	3/79	SANITARY MANHOLE	ENGINEER
DRAWN BY:	KP		IMPROVEMENT
CHECKED BY:	KV		STANDARD NO. U-2



REVISION	DATE	WOODBRIDGE SANITARY DISTRICT	APPROVED BY:
1	Feb 79		<i>Henry M. Hirata</i>
DATE:	3/79	LOCATOR WIRE INSTALLATION	ENGINEER
DRAWN BY:	JLD		IMPROVEMENT
CHECKED BY:			STANDARD NO. U-6



REVISION	DATE	WOODBRIDGE SANITARY DISTRICT	APPROVED BY:
1	Feb 79		<i>Henry M. Hirata</i>
DATE:	3/79	WATER SERVICE	ENGINEER
DRAWN BY:	JLD		IMPROVEMENT
CHECKED BY:			STANDARD NO. U-6



APPROVED BY:  
(SANITARY SEWER DETAILS ONLY)  
DATE: Jan 22, 1997  
*Ken Kjeldsen*  
KEN KJELDEN, ENGINEER  
WOODBRIDGE SANITARY DISTRICT

REVISIONS

NO	DATE	REVISIONS	BY

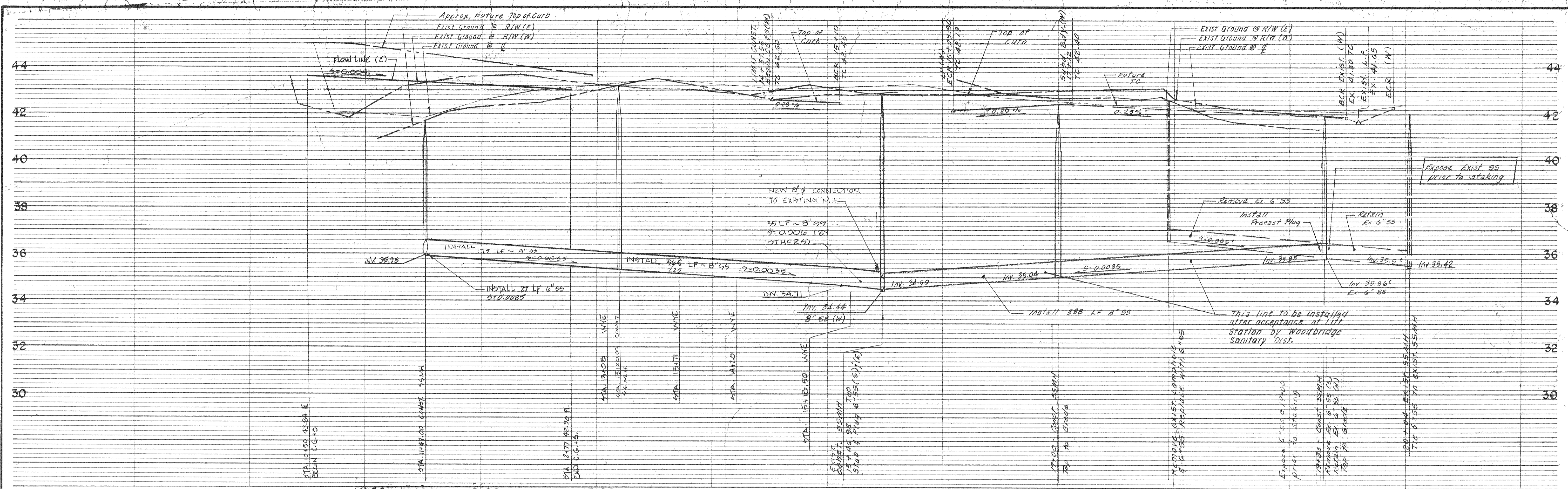
AS-BUILT

DESIGN	SM	DRAWN BY	SM
SUBMITTED BY	<i>Ken Murphy</i>	AS-BUILT BY	SM
R.C.E. #	A9217		12-6-92

APPROVED BY: HENRY M. HIRATA R.C.E. NO. 21258  
\_\_\_\_\_, 19\_\_\_\_  
SAN JOAQUIN COUNTY DIRECTOR OF PUBLIC WORKS

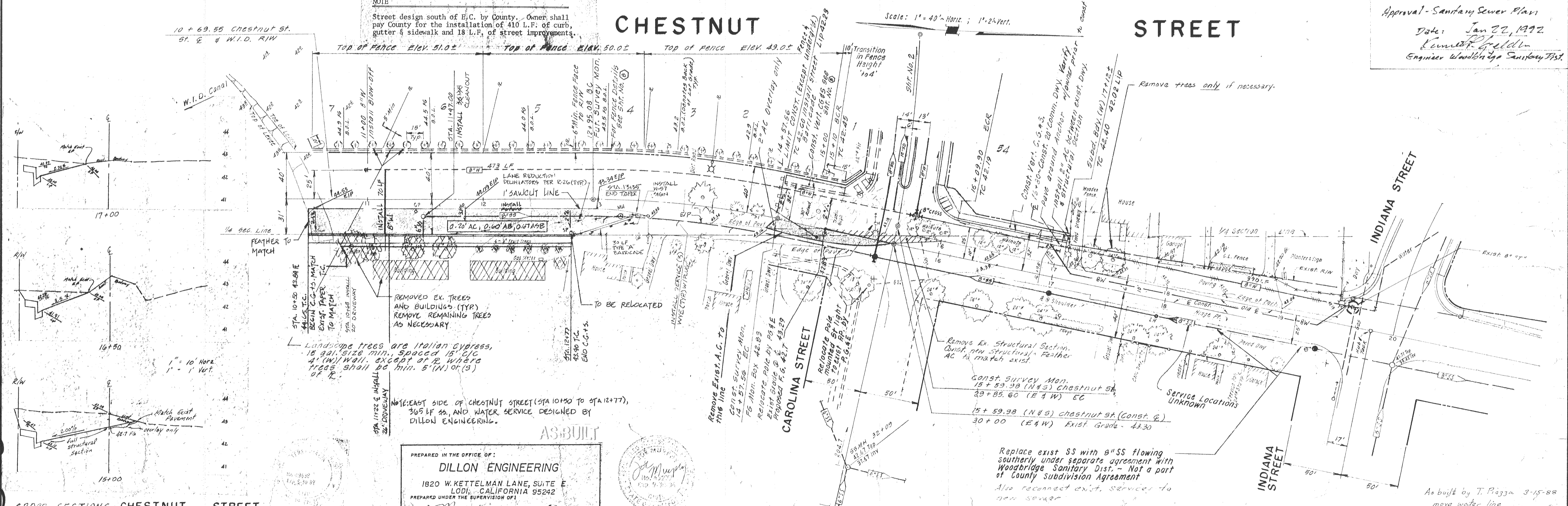
DILLON ENGINEERING  
ENGINEERING PLANNING SURVEYING  
1820 W. KETTLEMAN LANE, SUITE E  
LODI, CALIFORNIA 95242  
(209) 334-8613

SHEET 3 OF 9  
JOB NO. 9037  
FILE NO.



**CHESTNUT STREET**

Approval - Sanitary Sewer Plans  
Date: Jan 22, 1992  
Kenneth G. Feldman  
Engineer Woodbridge Sanitary Dist.



**CROSS SECTIONS - CHESTNUT STREET**

NO.	DATE	REVISIONS	BY	DESIGN	TP	DRAWN BY
1	June 87	Revise SS.	TP			ES
2	3-15-88	Revise Water Location	TP			ES

APPROVED BY: *[Signature]* 19

PREPARED IN THE OFFICE OF:  
**DILLON ENGINEERING**  
1820 W. KETTELMAN LANE, SUITE E  
LODI, CALIFORNIA 95242  
PREPARED UNDER THE SUPERVISION OF:  
*[Signature]* R.C.E. 49277

**ASBUILT**

Remove EXIST. A.C. TO THIS LINE  
15' ST. SURVEY MON.  
14' x 17' x 56" EC  
FE Mon. Box 42.83  
Reconnect pole by 10' 4" E  
EXIST. GRADE @ 42.29  
Proposed F.G. 42.7

Remove EX. STRUCTURAL SECTION. CONST. NEW STRUCTURAL FEATHER AC TO MATCH EXIST.  
Const. Survey Mon. 15' x 59.98 (N 4 S) Chestnut St. 33' x 85.60 (E 4 W) EC  
15' x 59.98 (N 4 S) Chestnut St. (Const. R.)  
30' x 00 (E 4 W) EXIST. GRADE - 43.30

Replace exist SS with 8" SS flowing southerly under separate agreement with Woodbridge Sanitary Dist. - Not a part of County Subdivision Agreement  
Also reconnect exist. services to new sewer

As built by T. Pizzini 3-15-88  
move water line

**BAUMBACH & PIAZZA**  
CIVIL ENGINEERS - SURVEYORS  
323 W. ELM ST., LODI, CALIF. 95240 PH. 209-368-8878

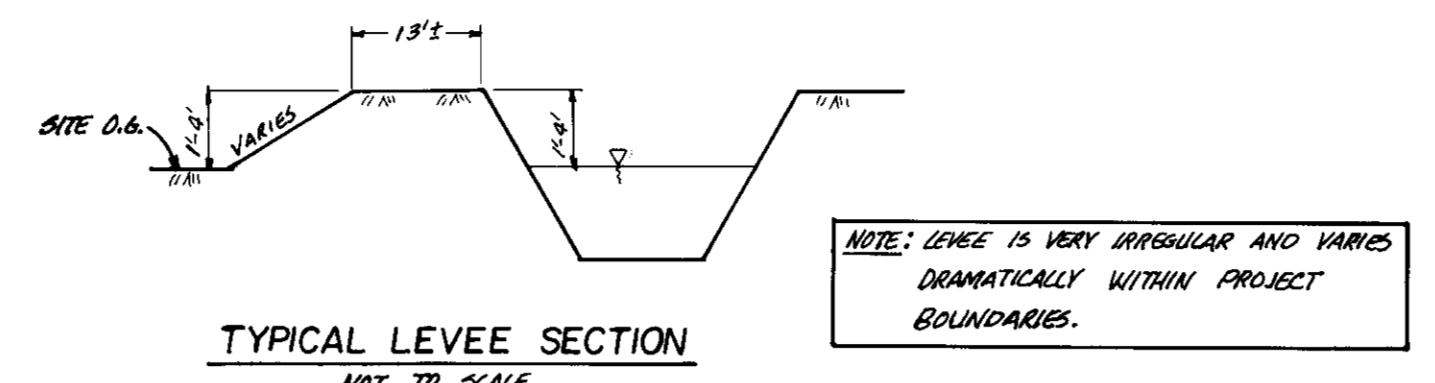
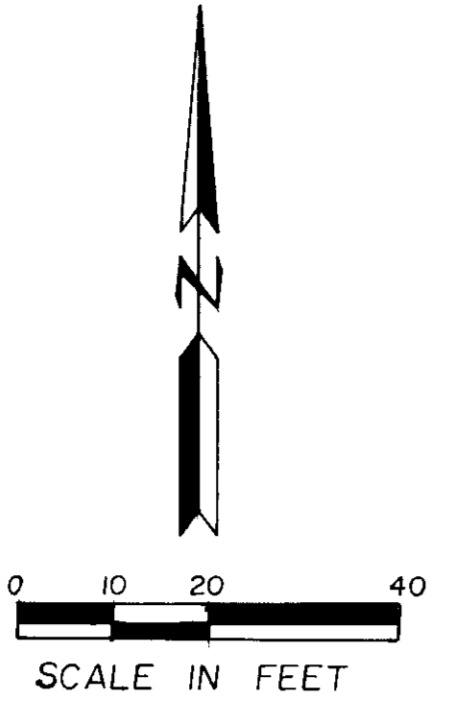
**CHESTNUT STREET**  
500' S/ CAROLINA ST. TO INDIANA ST.

**WINE COUNTRY**  
CHESTNUT STREET CONDOS DP91-32

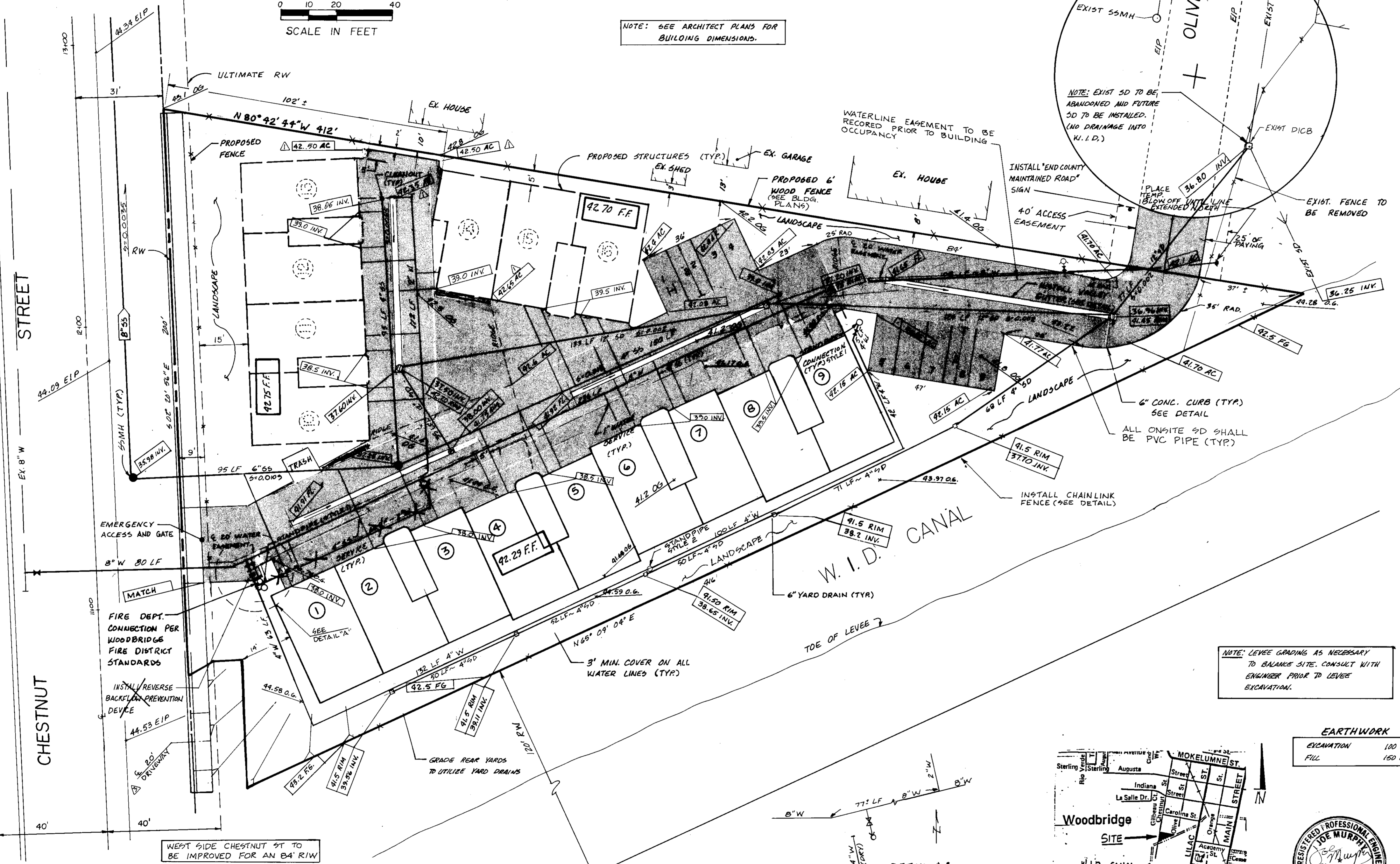
SHEET 219 OF 219  
JOB NO. 8709  
FILE NO. X-822

SHEETS

NOTE: SEE OFFSITE PLANS FOR STREET IMPROVEMENTS. (SEE SHEET 2)

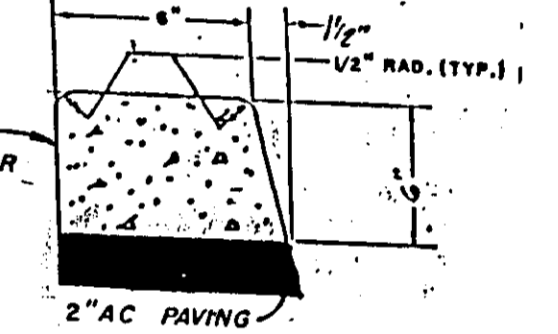


NOTE: SEE ARCHITECT PLANS FOR BUILDING DIMENSIONS.

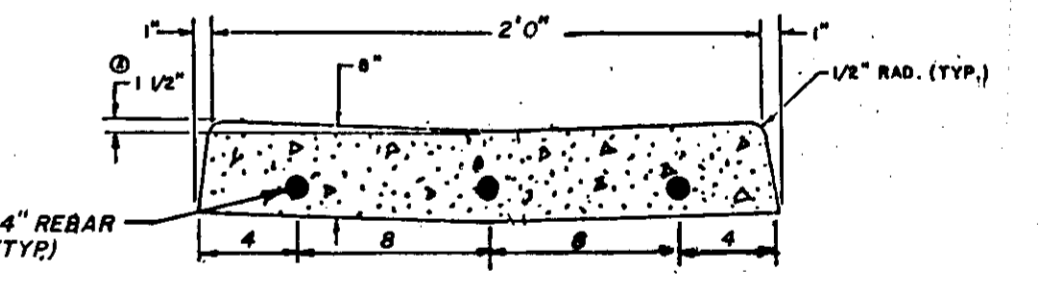


GENERAL NOTES:

1. ALL APPLICABLE FEES TO BE PAID AND PERMITS REQUIRED SHALL BE OBTAINED BY THE CONTRACTOR BEFORE COMMENCEMENT OF CONSTRUCTION.
2. CONTRACTOR SHALL INSPECT SITE PRIOR TO BIDDING.
3. PRIOR TO SUBMITTING A BID, THE CONTRACTOR SHALL PERFORM THE NECESSARY EARTHWORK CALCULATIONS TO DETERMINE THE AMOUNT OF CUT AND FILL AND RESULTANT EXCESS OR SHORTAGE OF DIRT ON-SITE, AND NOTIFY THE CONSULTING ENGINEER OF HIS RESULTS. IT IS THE CONTRACTOR'S RESPONSIBILITY TO INSURE THAT THE EARTHWORK WILL BALANCE ON-SITE. EXCESS OF DIRT SHALL BE DISTRIBUTED EVENLY ON ALL LOTS, AFTER GRADING PLAN HAS BEEN REVISED TO ENSURE PROPER DRAINAGE.
4. APPROPRIATE DUST CONTROL TO BE PROVIDED FOR THE ALLEVIATION OR PREVENTION OF A DUST NUISANCE, AT THE CONTRACTOR'S EXPENSE.
5. CONTRACTOR AGREES THAT HE SHALL ASSUME SOLE AND COMPLETE RESPONSIBILITY FOR JOB SITE CONDITIONS DURING THE COURSE OF CONSTRUCTION OF THIS PROJECT, INCLUDING SAFETY FOR ALL PERSONS AND PROPERTY; THAT THIS REQUIREMENT SHALL APPLY CONTINUOUSLY AND NOT BE LIMITED TO NORMAL WORKING HOURS; AND THAT THE CONTRACTOR SHALL DEFEND, INDEMNIFY, AND HOLD THE CONSULTING ENGINEER, THE OWNER AND THE ENGINEER HARMLESS FROM ANY AND ALL LIABILITY, REAL OR ALLEGED, IN CONNECTION WITH THE PERFORMANCE OF WORK ON THIS PROJECT.
6. CONTRACTOR SHALL BE RESPONSIBLE FOR LOCATIONS AND PROTECTING ALL UNDERGROUND FACILITIES AFFECTED BY THE WORK AND SHALL CONTACT UNDERGROUND SERVICES ALERT (USA) 48 HOURS PRIOR TO ANY EXCAVATION WORK FOR DETERMINATION AND LOCATION OF UNDERGROUND UTILITIES. (PHONE 1-800-642-2444).
7. DILLON ENGINEERING, CONSULTING ENGINEERS, SHALL SET ALL SURVEY CONTROLS AND CONSTRUCTION STAKES AS NECESSARY FOR COMPLETION OF WORK. THE CONTRACTOR SHALL BE RESPONSIBLE FOR THE PRESERVATION OF ALL SURVEY AND CONSTRUCTION STAKES. SURVEY AND CONSTRUCTION STAKES THAT ARE LOST OR DESTROYED DUE TO CONTRACTOR'S NEGLIGENCE WILL BE SET BY THE CONSULTING ENGINEER AT THE CONTRACTOR'S EXPENSE. DILLON ENGINEERING ASSUMES NO RESPONSIBILITY FOR ANY WORK CONSTRUCTED IF STAKED BY OTHERS.
8. CONTRACTOR SHALL GIVE CONSULTING ENGINEER A MINIMUM OF 48 HOUR NOTIFICATION PRIOR TO ANY AND ALL STAKING, INCLUDING UTILITIES.
9. CITY OF LODI BENCH MARK: BRASS CAP SET IN TOP OF CURB AT SOUTHEAST CORNER OF EHLERS AND WOODRIVER STAMPEO ROAD. ELEVATION = 40.78 C.O.L.: DATUM
10. ALL WORK SHALL CONFORM TO THE COUNTY OF SAN JOAQUIN IMPROVEMENT SPECIFICATIONS AND STANDARDS AND THE LATEST EDITION OF STATE OF CALIFORNIA, DEPARTMENT OF TRANSPORTATION STANDARD SPECIFICATIONS AND PLANS.
11. NOT SUBJECT TO 100 YEAR FLOODING.
12. SEE OFFSITE PLANS FOR UTILITY SERVICE EXTENTIONS.
13. THIS PROJECT TO COMPLY WITH CHAPTER 29 AND 70 OF THE 1988 U.B.C.
14. ALL TRAFFIC SIGNS AND MARKINGS SHALL CONFORM TO SAN JOAQUIN COUNTY STANDARDS AND TO THE MANUAL ON UNIFORM SHALL CONSTRUCTION CONTROL DEVICES AND SHALL BE SHOWN IN THE PLANS.
15. THRUST BLOCKS SHALL BE CONSTRUCTED AS REQUIRED BY DETAIL W-5 OF SAN JOAQUIN COUNTY STANDARDS.



CURB DETAIL N.T.S.



VALLEY GUTTER DETAIL N.T.S.

NOTE: LEVÉE GRADING AS NECESSARY TO BANGAS SITE. CONSULT WITH ENGINEER PRIOR TO LEVÉE EXCAVATION.



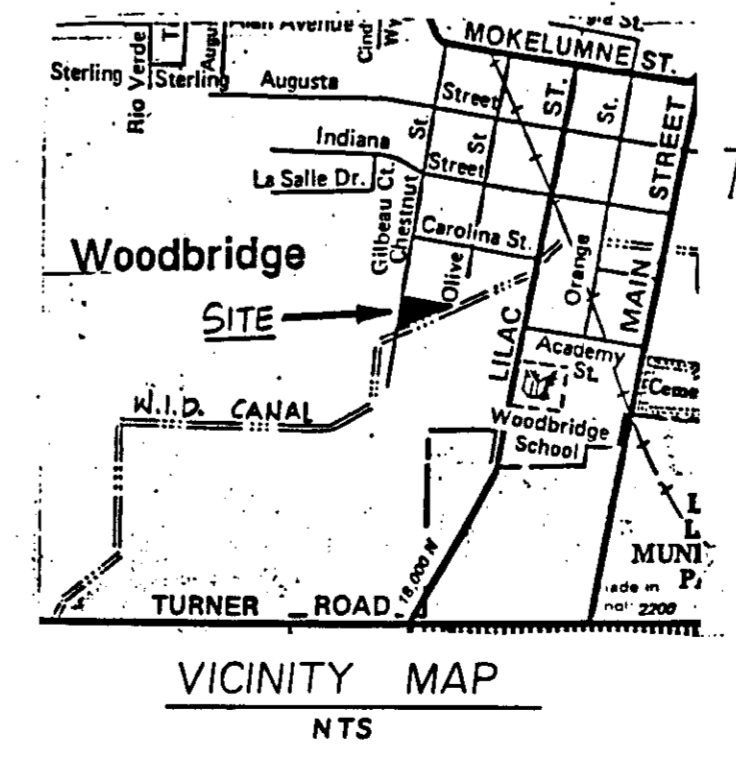
APPROVED BY: WOODBRIDGE FIRE DIST.  
*Michael McKittrick* 2-18-92  
 SIGNATURE DATE

BUILDING	UNITS	SIZE	PARKING	LANDSCAPING
1 (Approved)	1-9	17,100 SF (Two Story)	18 (Garage) 5 (Lot)	10,000 SF
2 (Proposed)	10-13	7,600 SF (Two Story)	8 (Garage) 2 (Lot)	4,300 SF
3 (Proposed)	14-16	5,700 SF (Two Story)	6 (Garage) 2 (Lot)	2,200 SF

- INSTALL MANHOLE
- INSTALL STANDPIPE
- ⊙ INSTALL CATCH BASIN
- INSTALL CLEANOUT
- INSTALL YARD DRAIN

LEGEND

EXIST.	EXISTING	INV.	INVERT
AC	ASPHALT CONCRETE	E/P	EDGE OF PAVEMENT
OG	ORIGINAL GROUND	(TYP.)	TYPICAL
AB	AGGREGATE BASE	F.F.	FINISH FLOOR
SD	STORM DRAIN	R/W	RIGHT-OF-WAY
SS	SANITARY SEWER	2" AC, 6" AB 95% RC	
W	WATER		INSTALL VALVE
FG	FINISHED GRADE		INSTALL FIRE HYDRANT
	INSTALL UTILITY		INSTALL FENCE



EARTHWORK

EXCAVATION	100 CYD.
FILL	150 CYD.



AS-BUILT

APPROVED BY: WOODBRIDGE IRRIGATION DIST.  
*John Blunt* 2-18-92  
 SIGNATURE DATE

REV. NO.	DESCRIPTION	DATE
1	GRADE REVISIONS	
2	WATER LINE	
3	DRIVEWAY	

**DILLON ENGINEERING**  
 ENGINEERING PLANNING SURVEYING  
 1820 W. Kettlemann Lane  
 Lodi, California 95242  
 (209) 334-6613

**CHESTNUT STREET GRADING AND UTILITY PLAN**  
 WOODBRIDGE  
 SAN JOAQUIN COUNTY

SEPTEMBER, 1991

REV. NO.	DESCRIPTION	DATE	SCALE: 1" = 20'	APPROVED BY: <i>John M. Kettlemann</i>	SHEET NO. 1
DESIGNED BY: J.M.				DATE: February 28, 1992	OF 4 SHEETS
DRAWN BY: J.P. / T.W.				CHECKED BY:	JOB NO. 9037
AS BUILT BY: J.M.					

SU 210.31