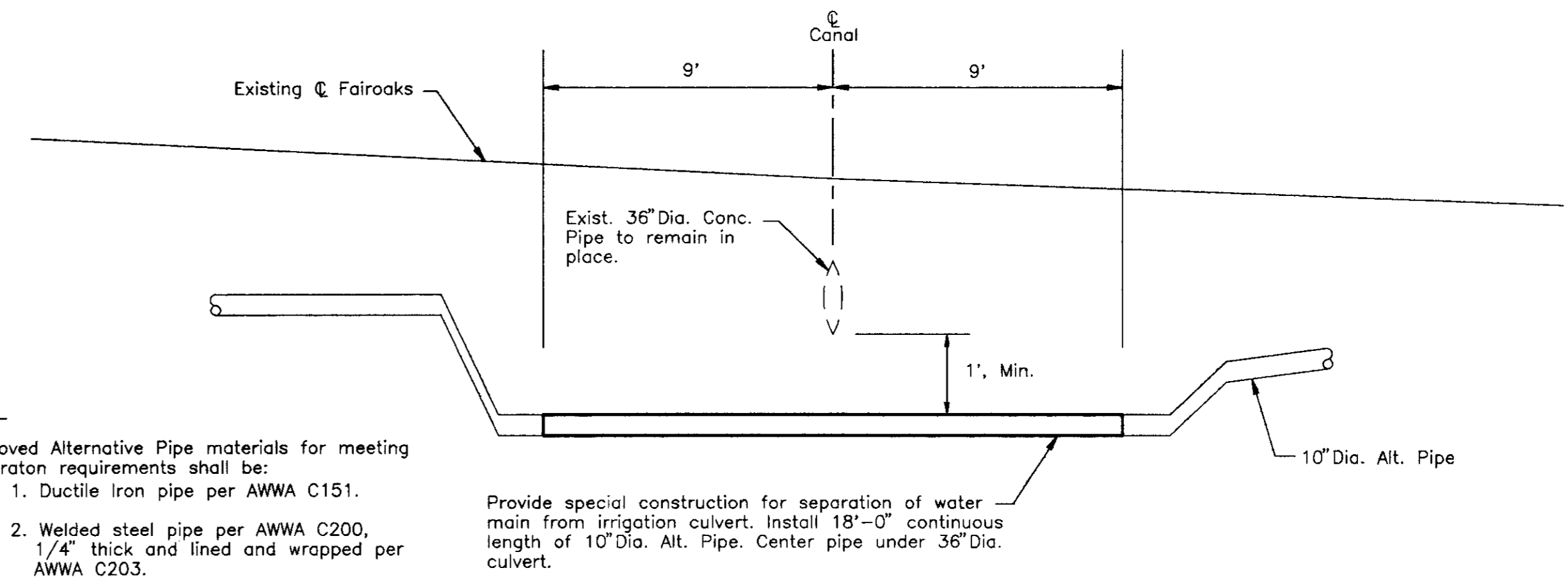


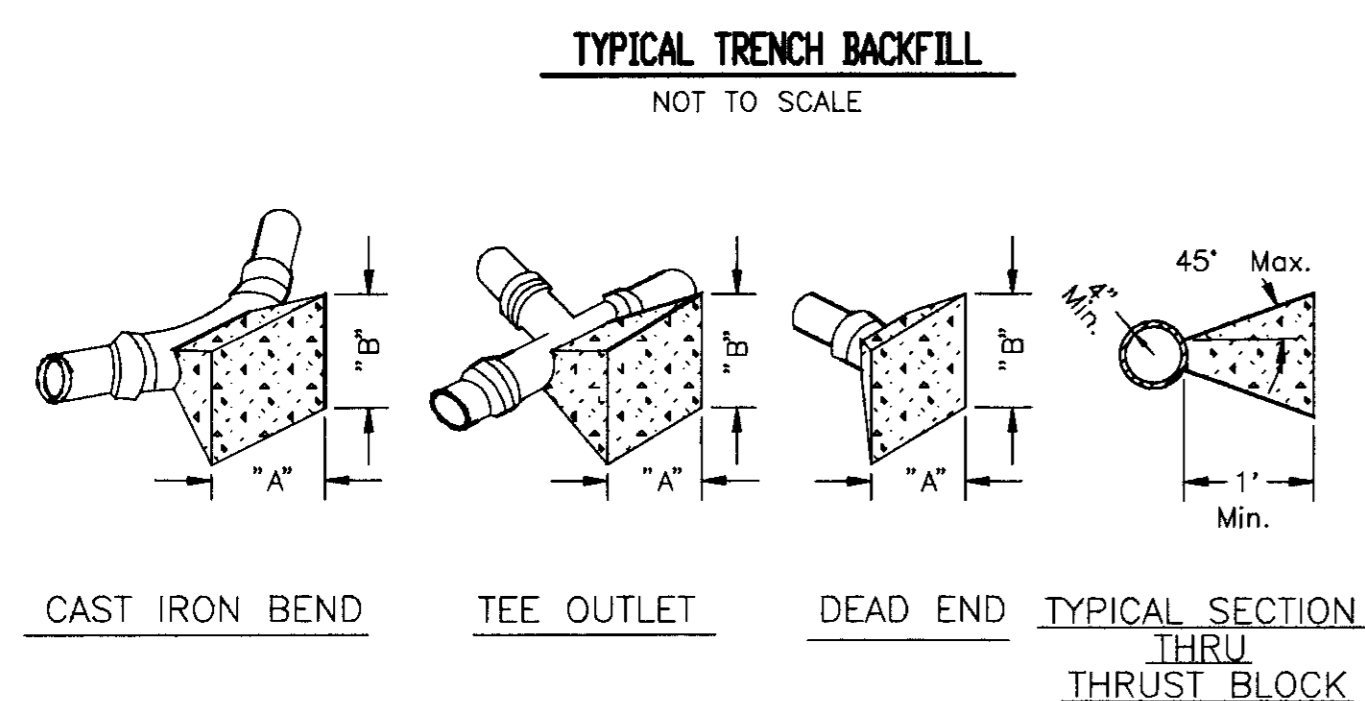
NOTES:
 1. Relative compaction of materials shall be tested by the State of California, Dept. of Transportation Testing Manual, test method No. California 216 or 231.
 2. All existing pavement shall be neatly cut to line prior to trench excavation.

BASE BID QUANTITIES			
ITEM NO.	DESCRIPTION	ESTIMATED QUANTITY	UNIT OF MEASURE
1.	FORCE ACCOUNT		----
2.	CLEARING & GRUBBING	L.S.	----
3.	AGGREGATE BASE (Trench Repair)	20	S.Y.
4.	A.C. MISC. AREAS (Trench- 0.30)	50	S.Y.
5.	A.C. MISC. AREAS (Trench- 0.50')	125	S.Y.
6.	6" DIA. ALT. PIPE	35	L.F.
7.	8" DIA. ALT. PIPE	15	L.F.
8.	10" DIA. ALT. PIPE	400	L.F.
9.	8" GATE VALVE	2	EA.
10.	10" GATE VALVE	1	EA.
11.	FIRE HYDRANT W/FITTINGS AS REQUIRED	13	EA.
12.	TESTING & DISINFECTION	L.S.	----



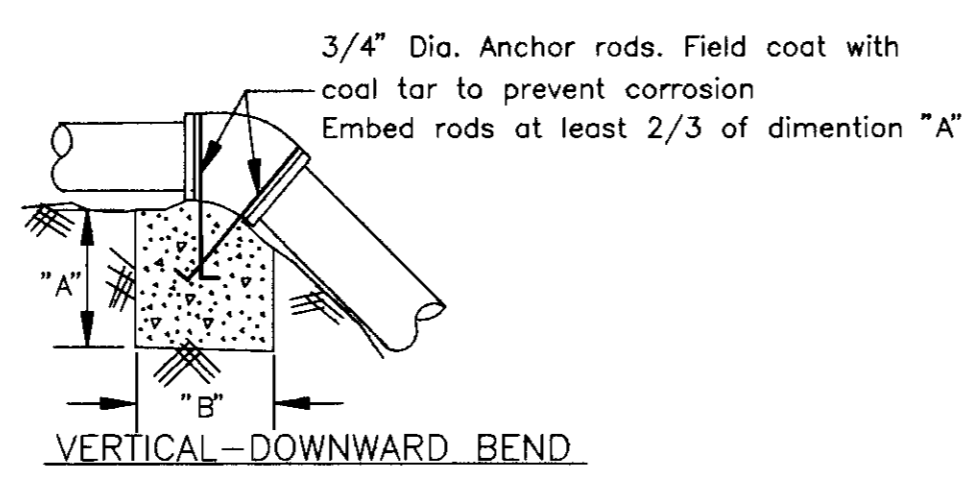
Note:
 Approved Alternative Pipe materials for meeting separation requirements shall be:
 1. Ductile iron pipe per AWWA C151.
 2. Welded steel pipe per AWWA C200, 1/4" thick and lined and wrapped per AWWA C203.
 3. Class 200 PVC pipe per AWWA C900.
 4. Reinforced concrete pressure pipe, steel cylinder type per AWWA C300, C301 or C303.

CULVERT CROSSING DETAIL
 NOT TO SCALE



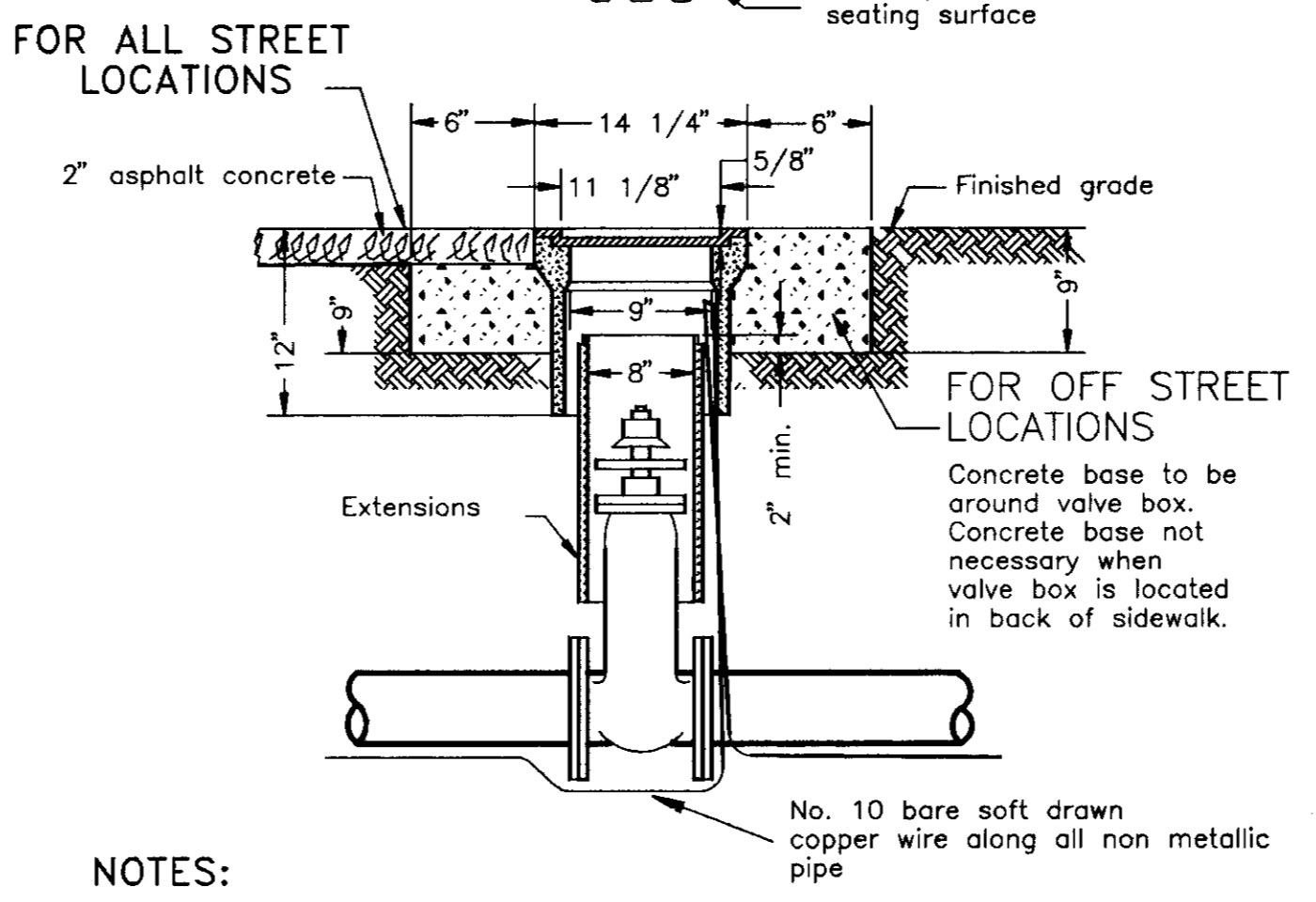
THRUST BLOCK DIMENSIONS					
FITTINGS	"A"	"B"	FITTINGS	"A"	"B"
6" LINE			10" LINE		
22 1/2	1'-6"	1'-6"		3'-0"	2'-0"
45	2'-0"	2'-0"		4'-0"	3'-0"
90	3'-0"	2'-6"		5'-6"	4'-0"
TEE OUTLET	3'-0"	2'-0"		4'-0"	4'-0"
DEAD END	3'-0"	2'-0"		4'-0"	4'-0"
8" LINE			12" LINE		
22 1/2	2'-0"	2'-0"		3'-0"	3'-0"
45	3'-0"	2'-6"		4'-6"	4'-0"
90	4'-0"	3'-6"		8'-0"	4'-0"
TEE OUTLET	3'-6"	3'-0"		5'-6"	4'-0"
DEAD END	3'-6"	3'-0"		5'-6"	4'-0"

NOTES:
 1. All thrust blocks shall be poured against undisturbed soil and shall be Class "B" Concrete.
 2. Thrust block dimensions were calculated to allow a soil bearing value of 1,000 pounds per square foot.



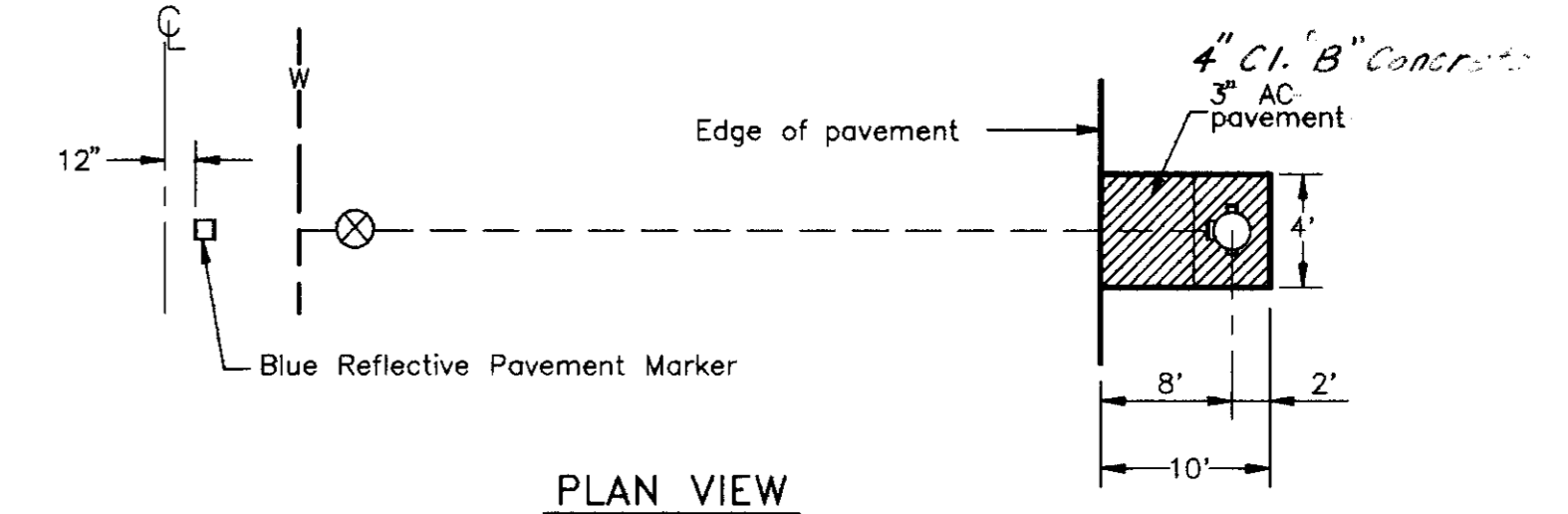
VERTICAL DIMENSIONS		
FITTINGS	"A"	"B"
6" LINE		
22 1/2	1'-9"	3'-0"
45	1'-9"	3'-6"
90	2'-3"	2'-6"
8" LINE		
22 1/2	2'-0"	4'-0"
45	2'-6"	4'-6"
90	3'-0"	6'-0"
10" LINE		
22 1/2	2'-9"	5'-0"
45	3'-0"	5'-6"
90	3'-6"	7'-0"

NOTES FOR VERTICAL BENDS:
 1. Width of block is trench width.
 2. For upward vertical bends, use equivalent horizontal thrust block.

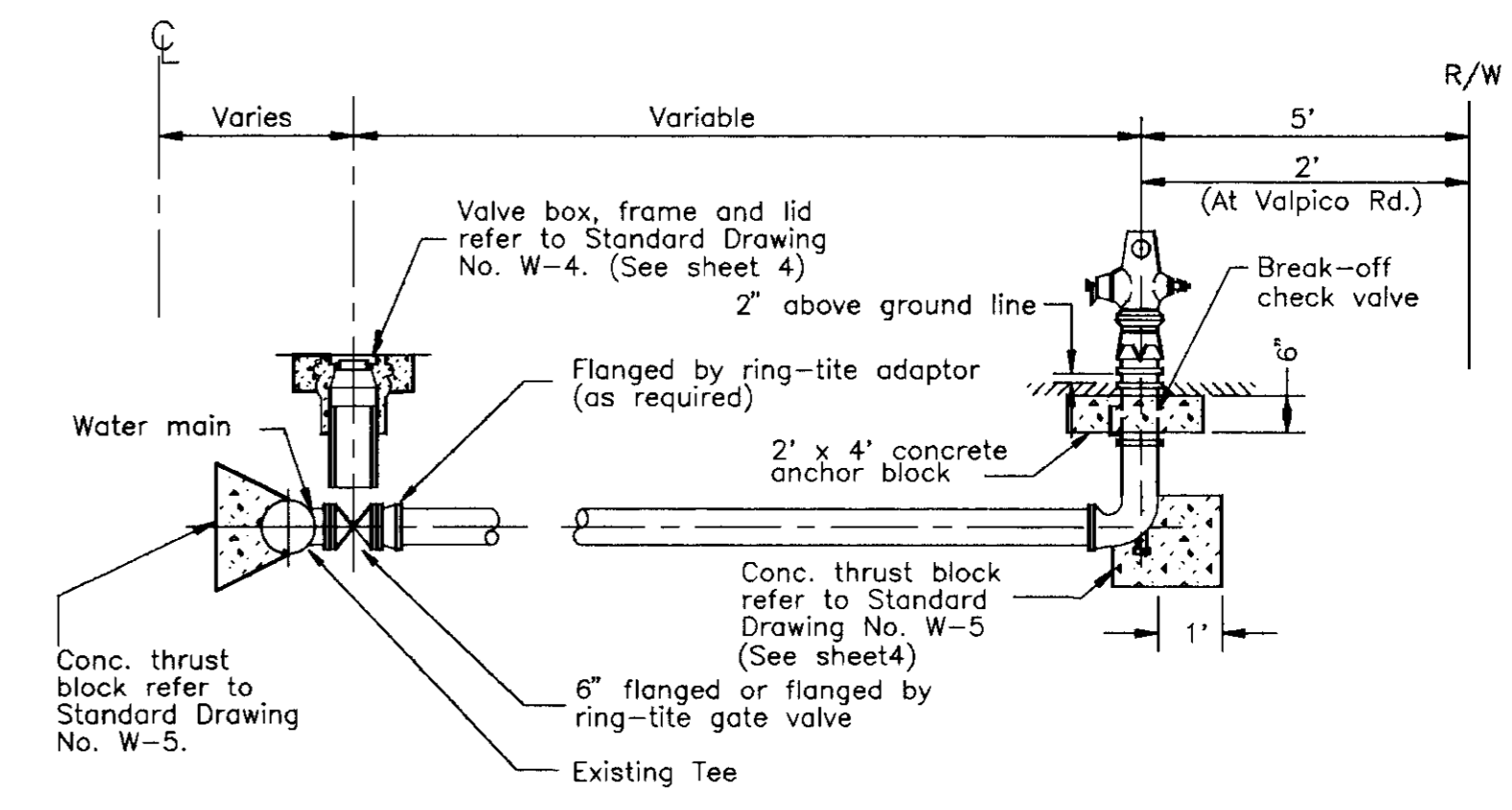


NOTES:
 1. Valve box and lid shall be Christy No. G-5, Brooks No. I R T or 4-TT, or equal.
 2. All lids and grade rings shall have machined seating surfaces.
 3. Extensions shall be as manufactured for the valve box supplied or pipe of correct size can be used.

VALVE BOX
 NOT TO SCALE



PLAN VIEW



NOTES:
 1. Fire hydrants shall be placed with pumper outlet facing directly towards the street.
 2. Fire hydrants shall be clean and free of concrete.
 3. Fire hydrants to be American Darling model B-62B, Long Beach model 615, James Jones J-4060, Dresser M & H style 929 "reliant", Mueller "Centurion" or "Modern Centurion", or approved equal with (2) 2 1/2" & (1) 1/4" outlets. Dry barrel in the Stockton area; (2) 2 1/2" & (1) 1/4" wet barrel in other areas as approved by the fire chief.
 4. All hydrants shall be painted OSHA safety yellow or as approved by the fire district.
 5. Break off check valve, Long Beach Iron Works, model LB 400, or approved equal

FIRE HYDRANT
 NOT TO SCALE

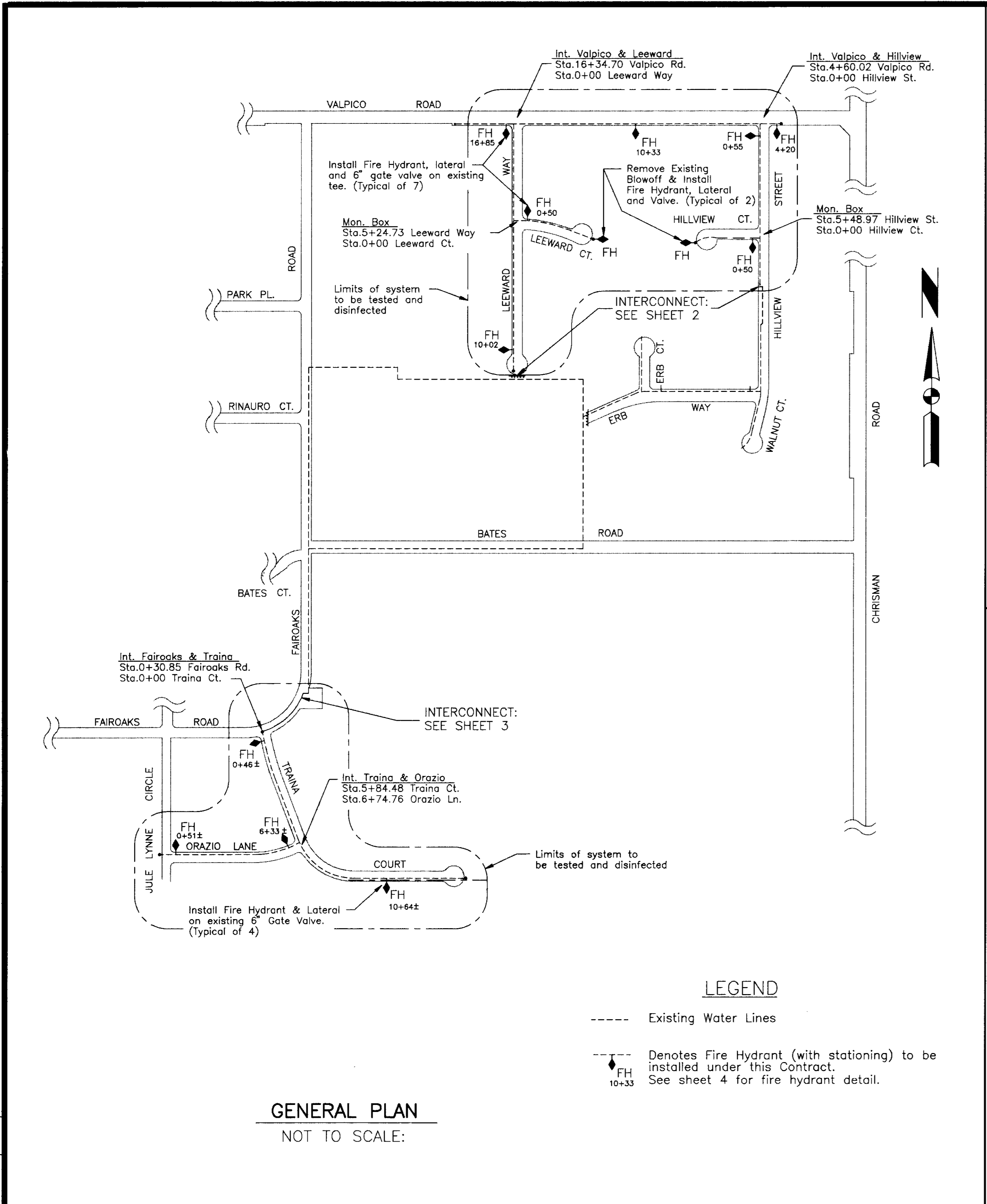
RECORD DRAWING
 Corrections By: *Om. Ph...*
 No Changes By: *...*
 Date: *...*
 Any Person Using This Drawing Should Verify All Information By Inspection of the Project

SU 2646

REVISIONS	DATE	DESCRIPTION	DATE	DESCRIPTION	DATE	DESCRIPTION	DATE	DESCRIPTION	DATE	DESCRIPTION	COUNTY OF SAN JOAQUIN	SCALE: None	CONSTRUCTION NOTES AND DETAILS	FAIROAKS WATER SYSTEM INTERCONNECTS PHASE 1	SHEET NO. 4	TOTAL SHEETS 4
DRAWN BY	DATE	PROJECT ENGINEER	DATE	CHECKED	DATE	SUBMITTED	DATE	APPROVED	DATE							
J.C. White	8/14/92	J.C. White	8/21/92	Dean H. Gilman	8/21/92	Manuel Solano	8/21/92	M.R.	8/21/92							
FILE NAME	DRAWER	SHEET NO.	ACAD													
			D:\FOWS\ SHEET4													

SU 2648

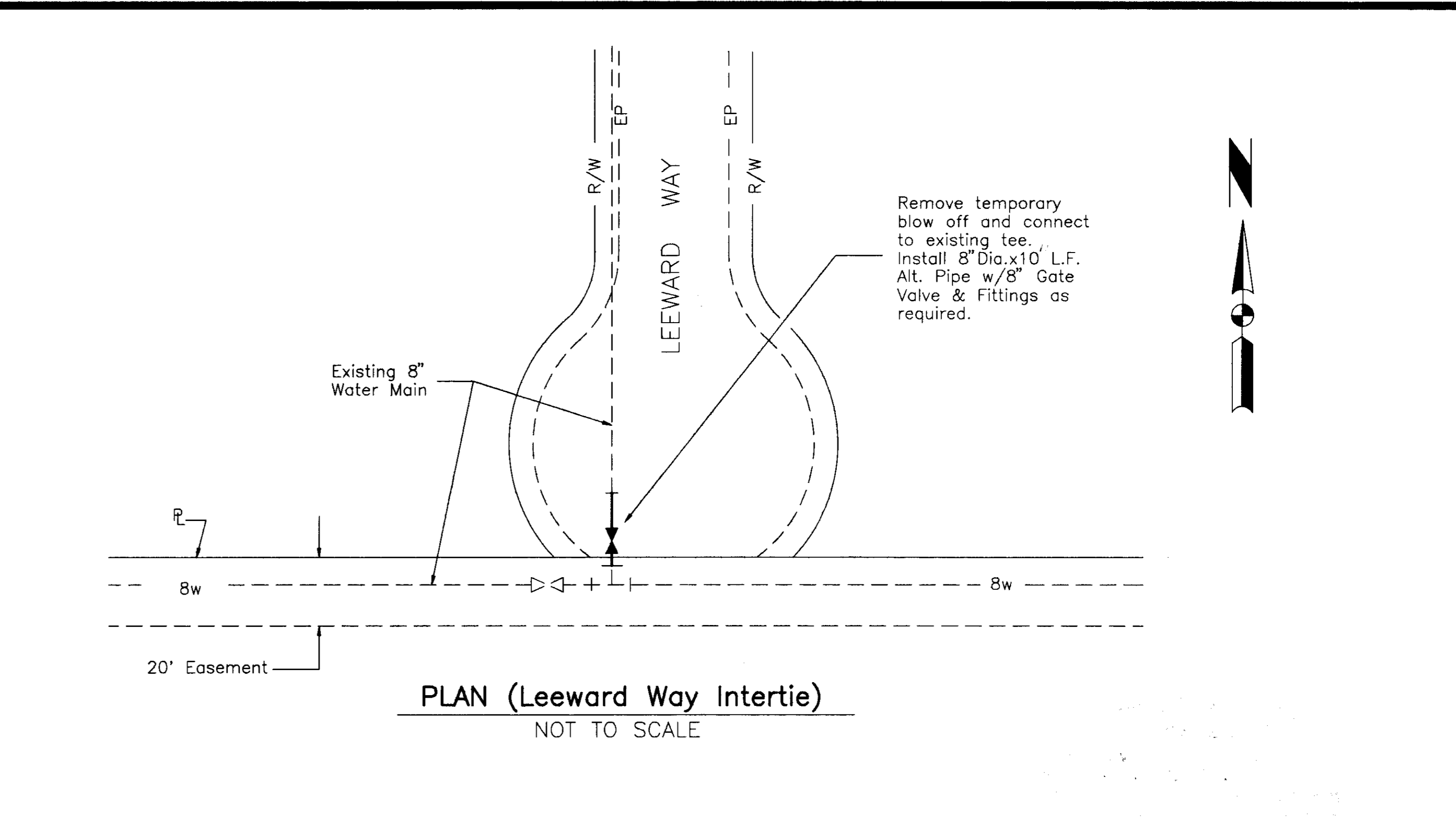
REVISIONS	DATE



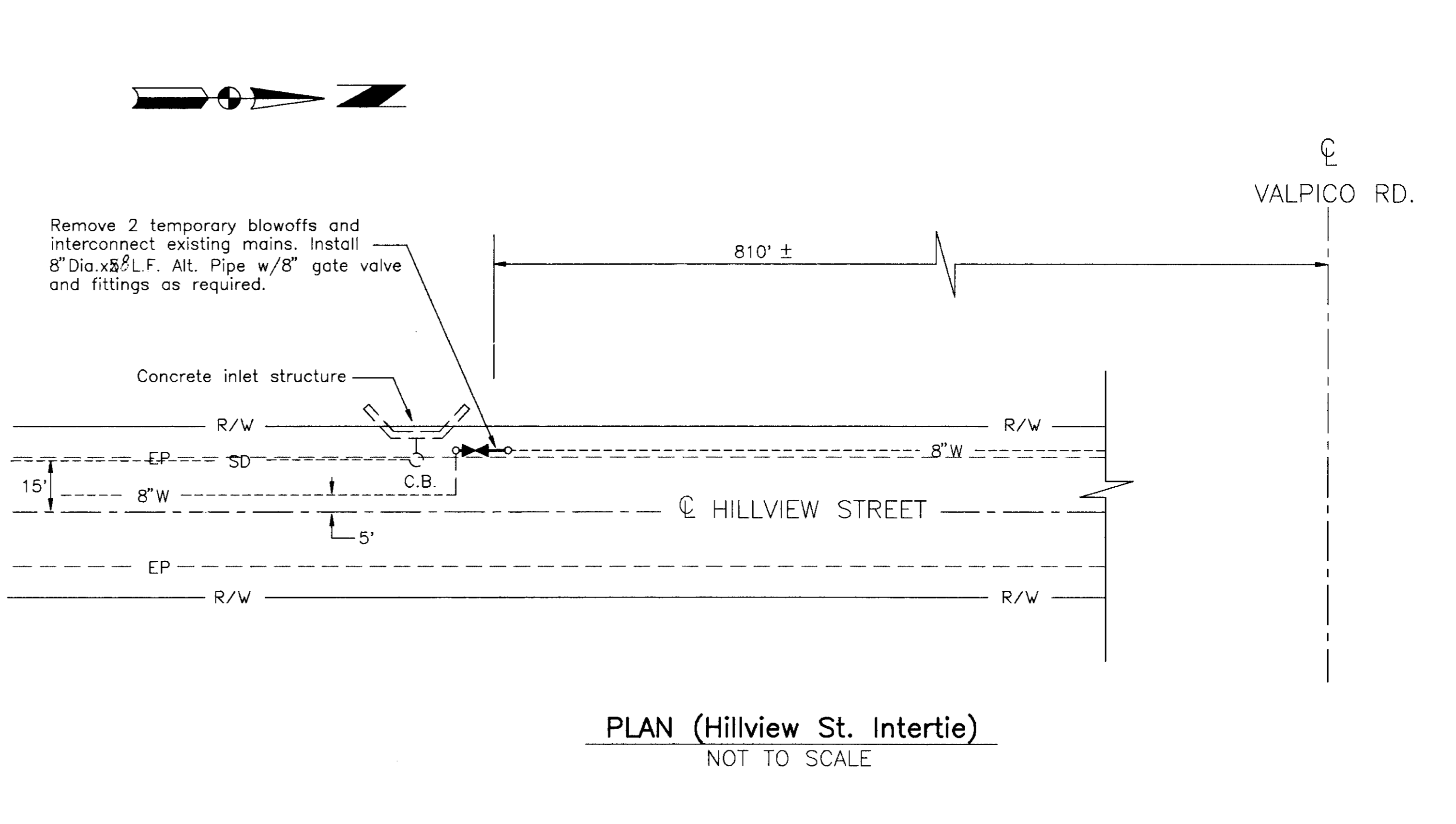
GENERAL PLAN
NOT TO SCALE:

LEGEND

- Existing Water Lines
- ◆ FH 10+33 Denotes Fire Hydrant (with stationing) to be installed under this Contract. See sheet 4 for fire hydrant detail.



PLAN (Leeward Way Intertie)
NOT TO SCALE



PLAN (Hillview St. Intertie)
NOT TO SCALE

DRAWN BY	DATE	PROJECT ENGINEER	DATE	CHECKED	DATE	SUBMITTED	DATE	APPROVED	DATE	COUNTY OF SAN JOAQUIN	SCALE: As Shown	LOCATION MAP & PLANS	FAIROAKS WATER SYSTEM INTERCONNECTS PHASE 1	SHEET NO.	TOTAL SHEETS
J.C. White	8/14/92	J.C. White	8/27/92	Dean Williams	8/27/92	Manuel Soto	8/27/92	M.S.	8/14/92	COUNTY OF SAN JOAQUIN	SCALE: As Shown	LOCATION MAP & PLANS	FAIROAKS WATER SYSTEM INTERCONNECTS PHASE 1	2	4
FILE NAME	DRAWER	SHEET NO.	ACAD												
D:\FOWS\SHEET2															

INDEX OF SHEETS

SHEET NO.	DESCRIPTION
1	TITLE SHEET
2	LOCATION MAP & PLANS
3	PLAN & PROFILE (Fair Oaks Road)
4	CONSTRUCTION NOTES & DETAILS

COUNTY OF SAN JOAQUIN
 DEPARTMENT OF PUBLIC WORKS
 STOCKTON, CALIFORNIA

COUNTY OF SAN JOAQUIN

Submitted September 1, 1992

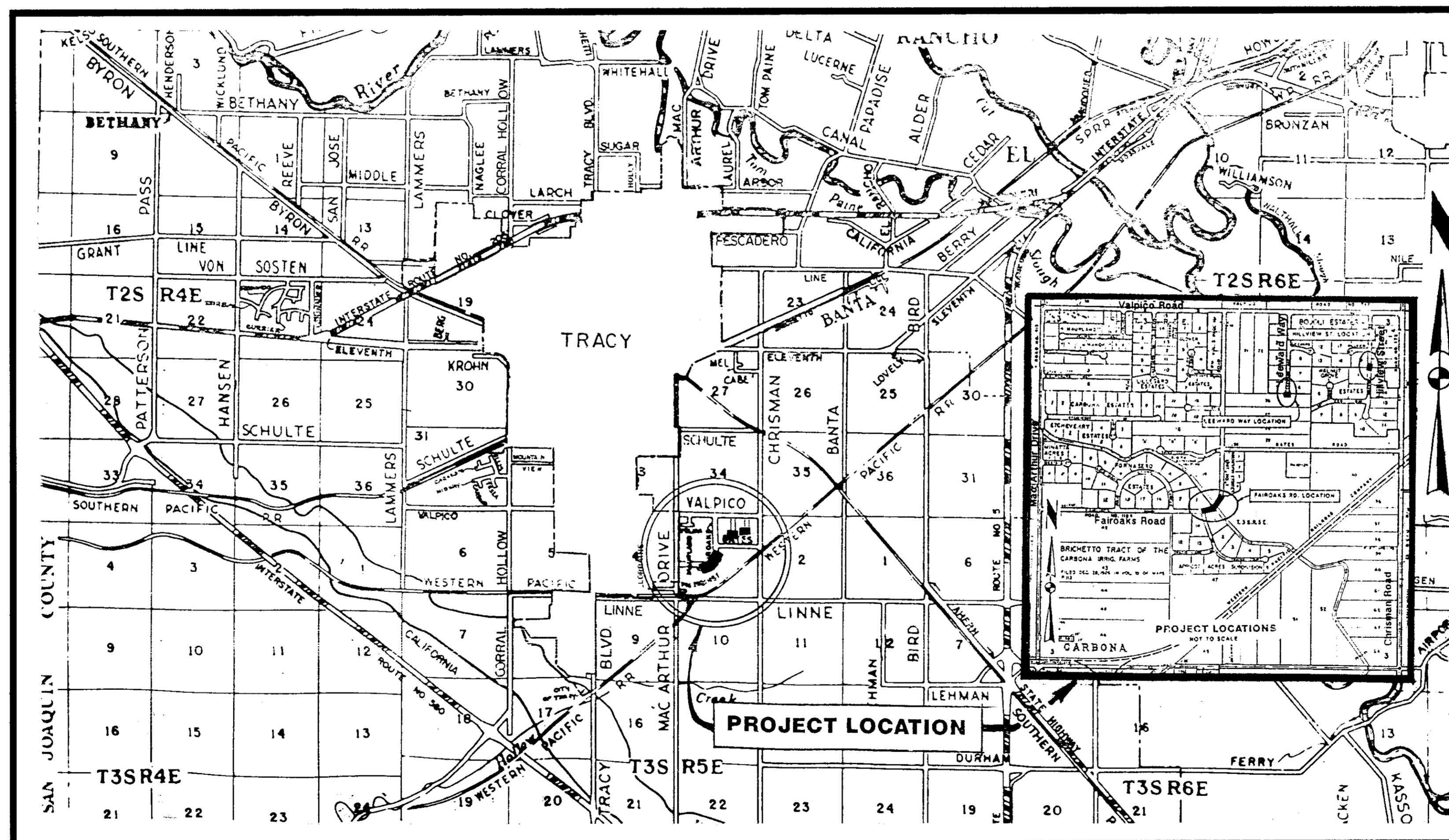
Henry M. Hirata

HENRY M. HIRATA
 R.C.E. 21258
 Director of Public Works



PROJECT PLANS FOR
**FAIROAKS WATER
 SYSTEM INTERCONNECTS
 PHASE 1**

TO BE SUPPLEMENTED BY STANDARD PLANS DATED JANUARY 1988



- ABBREVIATIONS -

- A.B. = Aggregate Base
- A.C. = Asphalt Concrete
- A.C.P. = Asbestos Cement Pipe
- Alt. = Alternative
- A.S. = Aggregate Subbase
- Bit. Cd. = Bituminous Coated
- CL = Center Line
- C.P. = Concrete Pipe
- C.S.P. = Corrugated Steel Pipe
- C.S.P.A. = Corrugated Steel Pipe Arch
- D.I. = Drain Inlet
- DW. = Driveway
- E.P. = Edge of Pavement
- N.R.C.P. = Non-Reinforced Concrete Pipe
- FL = Flow Line
- L.F. = Linear Feet
- M.H. = Manhole
- O.G. = Original Ground
- P.C.C. = Portland Cement Concrete
- Pen. Tr. = Penetration Treatment
- PL = Property Line
- P.M.S. = Plant Mixed Surfacing
- R.C.P. = Reinforced Concrete Pipe
- R & D = Remove and Dispose
- R & S = Remove and Salvage
- R/W = Right of Way
- S-Dr. = Side Drain
- S.P. = Standard Plans
- X-Dr. = Cross Drain
- W.W. = Walkway
- C.I.D.H. = Cast-In-Drilled-Hole
- B.B. = Beg. of Bridge
- E.B. = End of Bridge
- M.B.G.R. = Metal Beam Guard Railing

652275

RECORD DRAWING

Check by: *[Signature]*
 No. Changes: *[Number]*
 Date: *[Date]*
 Any Penalties: *[Text]*

NO.	DESCRIPTION	DRWN BY	CHKD BY	APP BY	DATE
		<i>J.C. White</i>			

PROJECT ENGINEER	DATE	SENIOR ENGINEER	DATE	APPROVAL	RECOMMENDED BY	DATE
<i>[Signature]</i>		<i>[Signature]</i>		<i>[Signature]</i>		<i>[Date]</i>
FILE NAME	DRAWER	SHEET NO.	C.A.D. FILE			
D:\PWS\TITLESHT						