

SU2715

REVISIONS	DATE

MAINTENANCE HOLE (M.H.)		FRAME & COVER (M.H.)	
Location	Quantity	Location	Quantity
ODELL AVE.	5 EA.	ODELL AVE.	5 EA.
HOWE AVE.	5 EA.	HOWE AVE.	5 EA.
FAIRMONT AVE	6 EA.	FAIRMONT AVE	6 EA.
LOWELL AVE.	3 EA.	LOWELL AVE.	3 EA.
IVY AVE.	4 EA.	IVY AVE.	4 EA.
Total 23 EA.		Total 23 EA.	

A.C. (Misc. Areas) 0.33' TRENCH REPAIR			
Location	Quantity		
	MAINS	LATERALS	TOTAL
HOWE AVE.	535	98	633 S.Y.
FAIRMONT AVE	616	124	740 S.Y.
LOWELL AVE.	330	63	393 S.Y.
IVY AVE.	610	115	725 S.Y.
			Total 2492 S.Y.

(See Note)

DROP INLET CONNECTION	
Location	Quantity
IVY AVE. Sta. 15+10 2' Lt.	1 EA.
IVY AVE. Sta. 18+33 2' Lt.	1 EA.
IVY AVE. Sta. 21+73 2' Lt.	1 EA.
Total 3 EA.	

A.C. (Misc. Areas) 0.60' TRENCH REPAIR			
Location	Quantity		
	MAINS	LATERALS	TOTAL
ODELL AVE.	470	83	553 S.Y.
			Total 553 S.Y.

(See Note)

SERVICE CLEANOUT	
Location	Quantity
ODELL AVE.	22 EA.
HOWE AVE.	27 EA.
FAIRMONT AVE	32 EA.
LOWELL AVE.	17 EA.
IVY AVE.	30 EA.
Total 128 EA.	

8" DIA. ALT SEWER PIPE	
Location	Quantity
ODELL AVE.	1,090 L.F.
HOWE AVE.	1,288 L.F.
FAIRMONT AVE	1,492 L.F.
LOWELL AVE.	750 L.F.
IVY AVE.	1505 L.F.
Total 6,125 L.F.	

4" DIA. ALT SEWER PIPE	
Location	Quantity
ODELL AVE.	500 L.F.
HOWE AVE.	525 L.F.
FAIRMONT AVE	900 L.F.
LOWELL AVE.	425 L.F.
IVY AVE.	950 L.F.
Total 3350 L.F.	

Designation	Allowable Pipe Material and Size				
	VCP	PVC	ABS	HDPE	CAST IRON
4" Dia. Alt. Sewer Pipe	4"	4"	4"	---	4"
8" Dia. Alt. Sewer Pipe	8"	8"	8"	8"	8"

NOTE: Type of pipe used

NOTE  
Full compensation for providing trench repair for sewer lateral trenches shall be considered as included in the contract unit prices paid for trench repair for the various surfaces involved and no additional payment will be made therefor.

J.G.  
1/25/94

RECOMMENDED BY: \_\_\_\_\_ DATE: \_\_\_\_\_  
DIRECTOR, MUNICIPAL UTILITIES DEPARTMENT

MOSSWOOD SEWER PROJECT PHASE I		
CONSTRUCTION NOTES		
DEPARTMENT OF PUBLIC WORKS CITY OF STOCKTON, CALIFORNIA		
SCALE: NONE	APPROVED BY: DATE: <u>4/6/92</u>	SHEET NO. 10
DESIGNED BY: D.G.		OF 10 SHEETS
DRAWN BY: A.P.T.	<i>A.P.T.</i>	PROJECT NO.
CHECKED BY: <i>AP</i>	<i>A.P.T.</i> CITY ENGINEER	
RECORD DWG.:	STOCKTON, CALIF.	

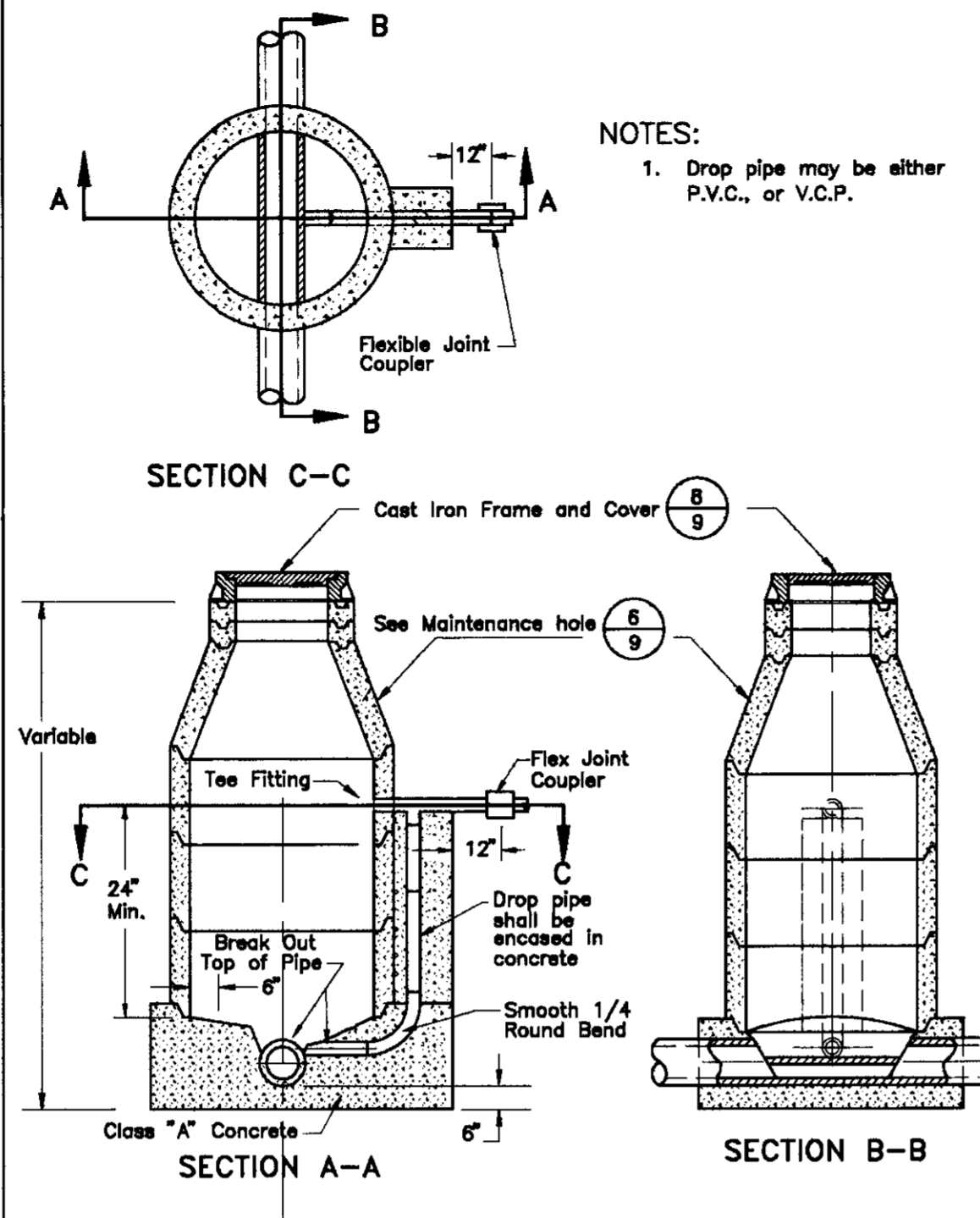
DRAWN BY	DATE	PROJECT ENGINEER	DATE	CHECKED	DATE	SUBMITTED	DATE	APPROVED	DATE
A.P.T.		<i>Dean K. Wilson</i>	7/1/93	<i>Dean K. Wilson</i>	7/14/93	<i>Manuel Salas</i>	7/21/93	<i>M.P.H.</i>	6/24/93

FILE NAME: \_\_\_\_\_ DRAWER: \_\_\_\_\_ SHEET NO.: \_\_\_\_\_ ACAD: \_\_\_\_\_  
C:\MOSS1\NOTES.DWG

COUNTY OF SAN JOAQUIN

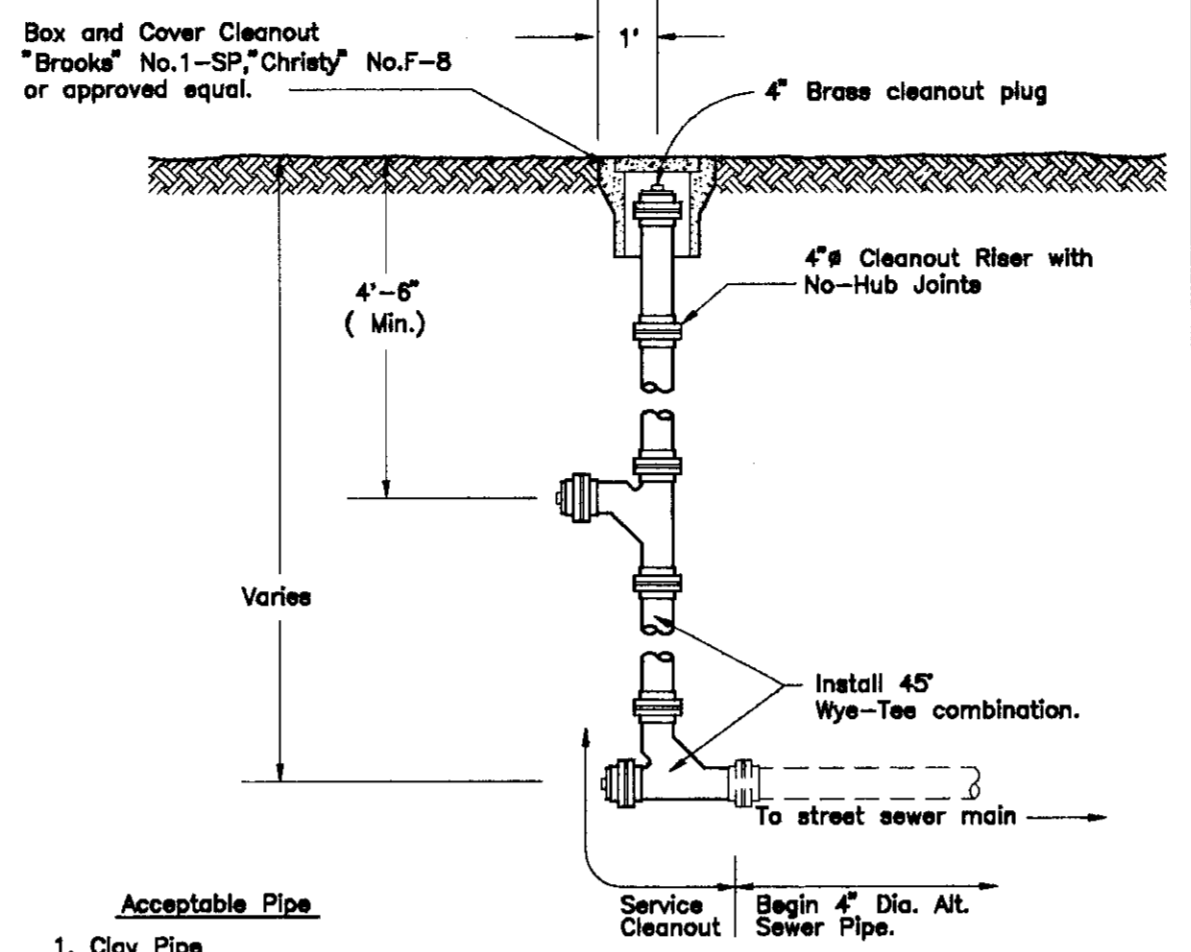
3693.90

BRIDGE FILE INDEX NO.



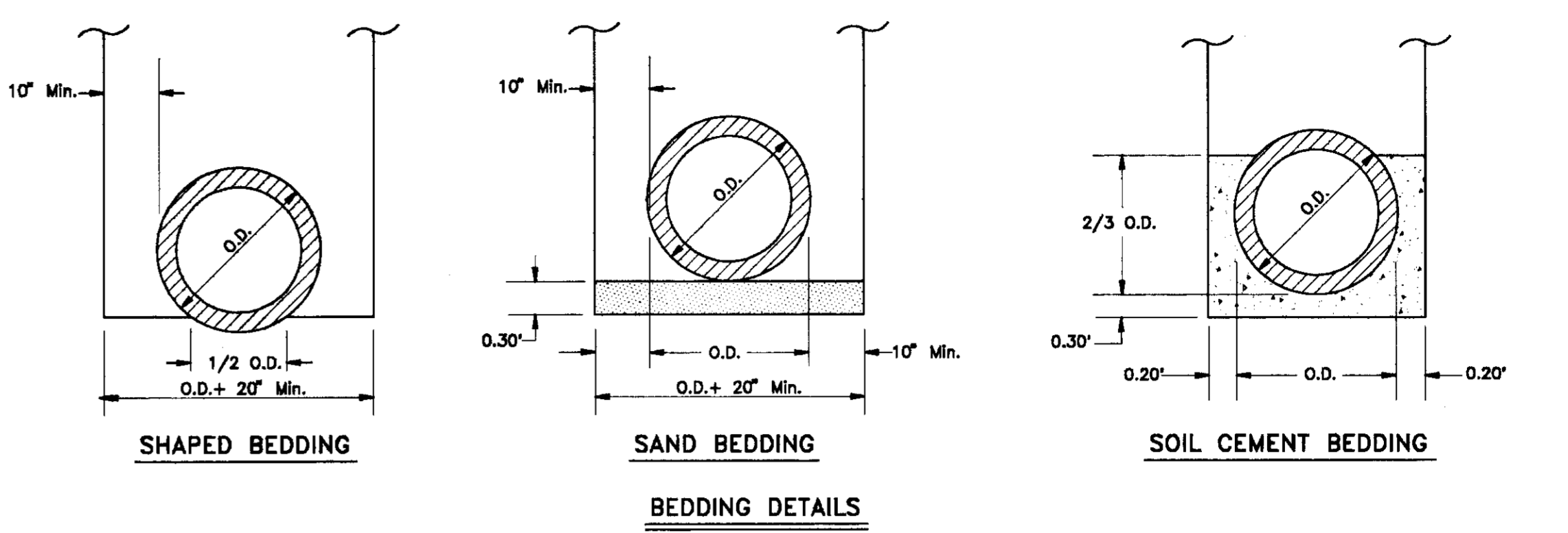
DROP INLET CONNECTION IN NEW M.H.

7  
9



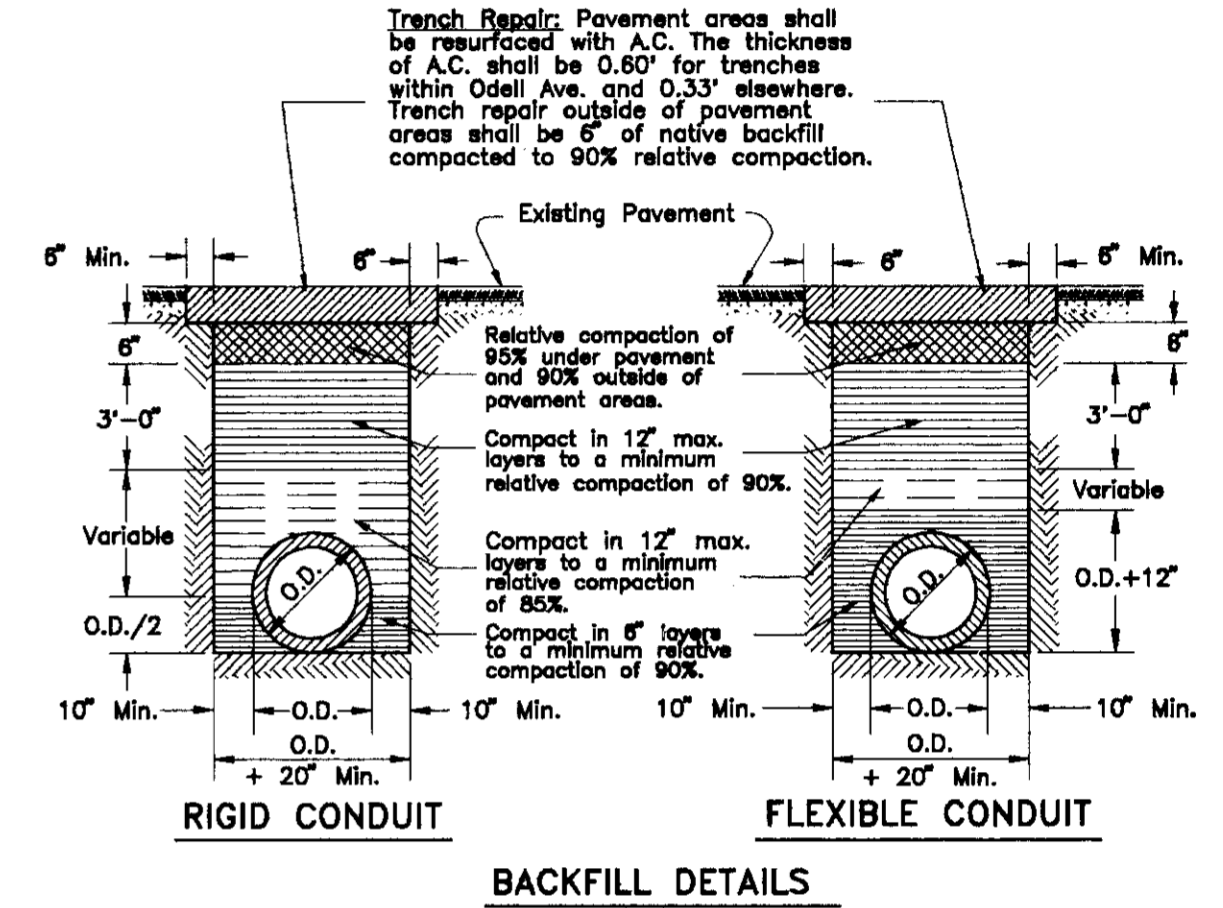
SERVICE CLEANOUT DETAIL

5  
9

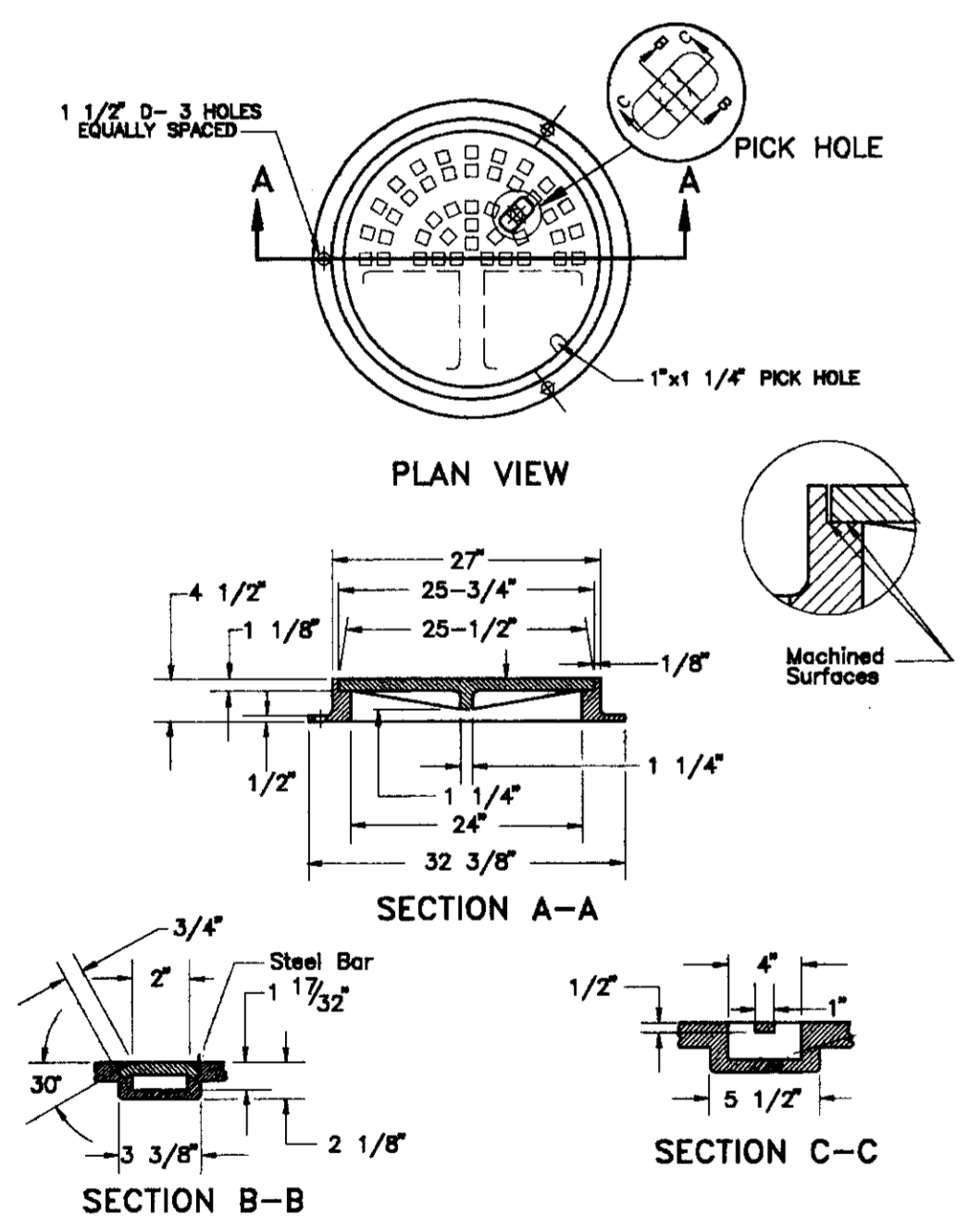


TYPICAL TRENCH BACKFILL (8" PIPE)

1  
9

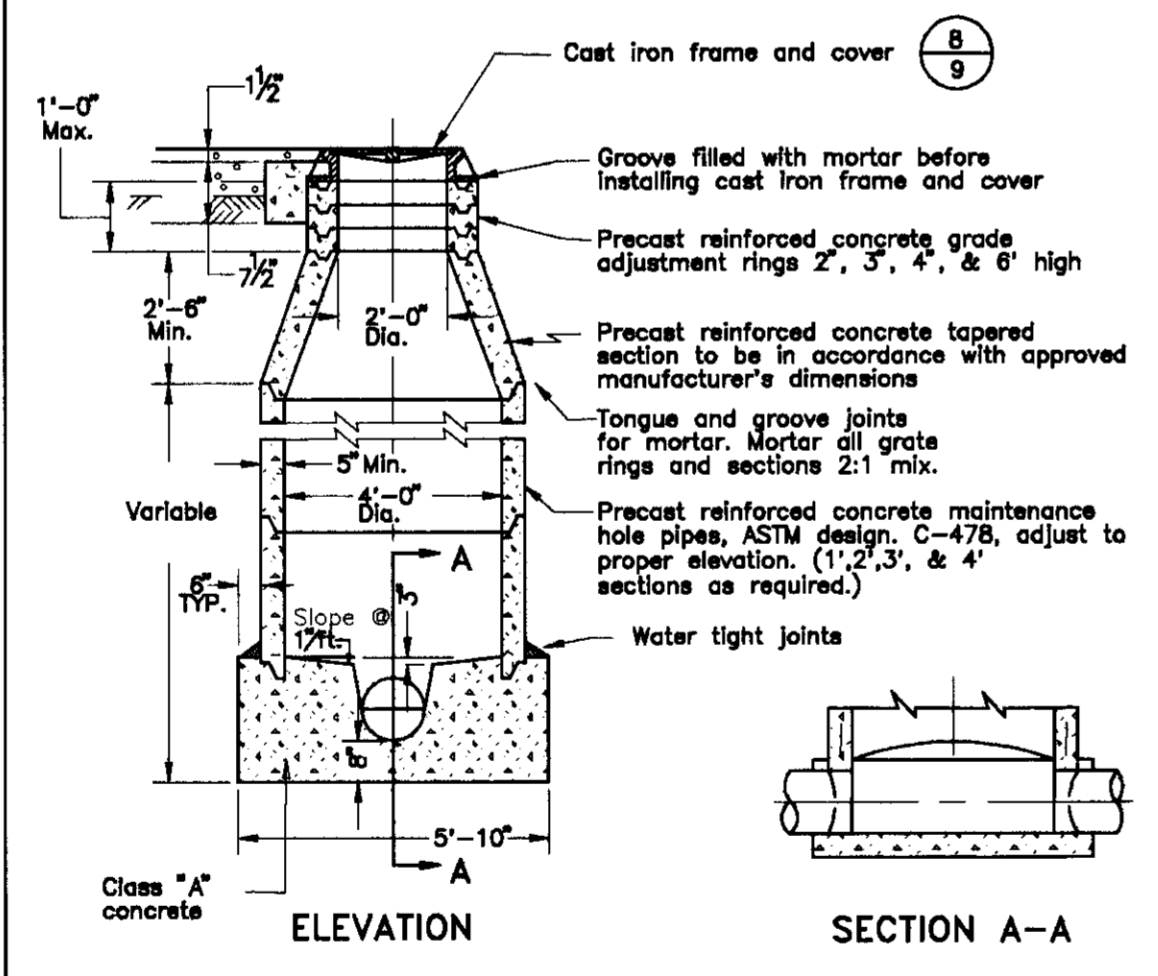


- NOTES:
- Relative compaction of materials shall be tested in accordance with the State of California, Dept. of Transportation, Testing Manual, test method No. California 216 or 231.
  - All existing pavement shall be neatly cut to line prior to trench excavation.
  - Maximum payment width for A.C. Misc. areas - Trench Repair shall be the outside pipe diameter plus 3 feet.



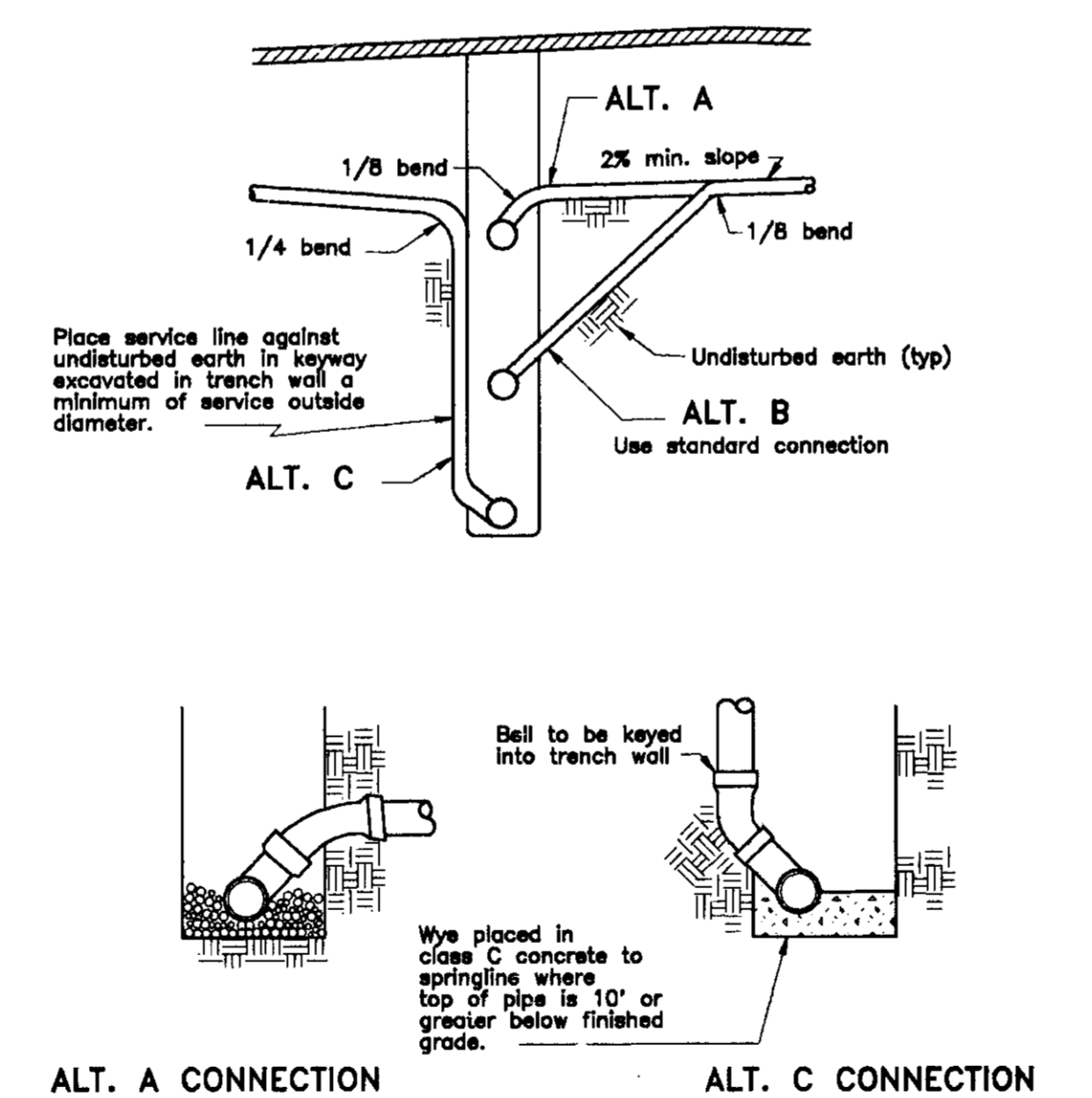
FRAME & COVER

8  
9



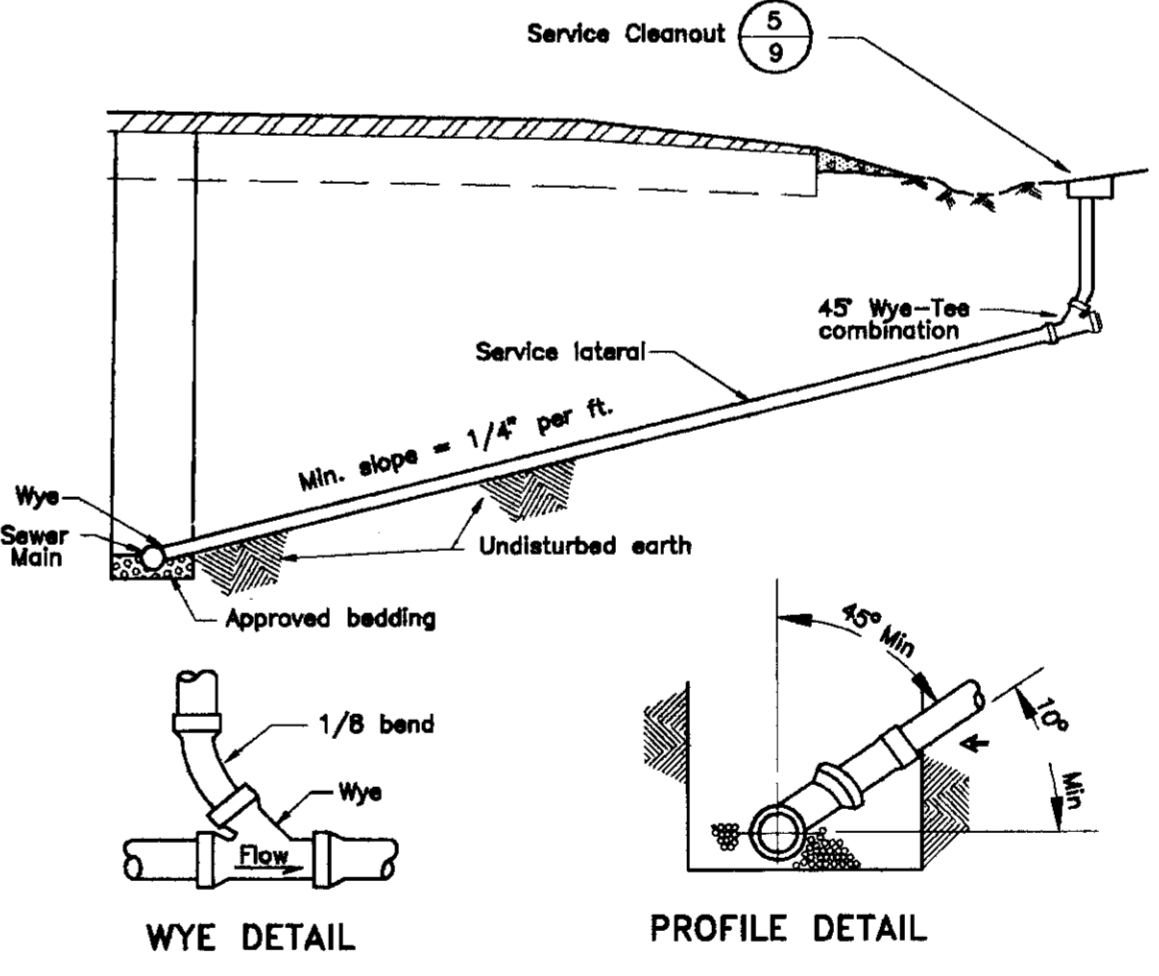
MAINTENANCE HOLE (M.H.)

6  
9



SEWER SERVICE LATERAL ALTERNATES

4  
9



TYPICAL SERVICE LATERAL

3  
9

TYPICAL TRENCH BACKFILL (4" PIPE)

2  
9

- NOTE:
- Maintenance Hole Frame and Cover to be Pinkerton A-624. D&L A1094. Frame with A-1032-18 cover or equal.
  - Cover shall be designed to withstand H-20 highway loading.
  - Frame and Cover shall be fully machined to assure inter changeability and a close quiet fit.

- NOTES:
- All services shall be 4" inside diameter.
  - Contractor shall use the most appropriate type connection for particular situation. Refer to Detail 4/9 for connection alternatives.

**MOSSWOOD SEWER PROJECT  
PHASE I  
CONSTRUCTION DETAILS**

DEPARTMENT OF PUBLIC WORKS  
CITY OF STOCKTON, CALIFORNIA

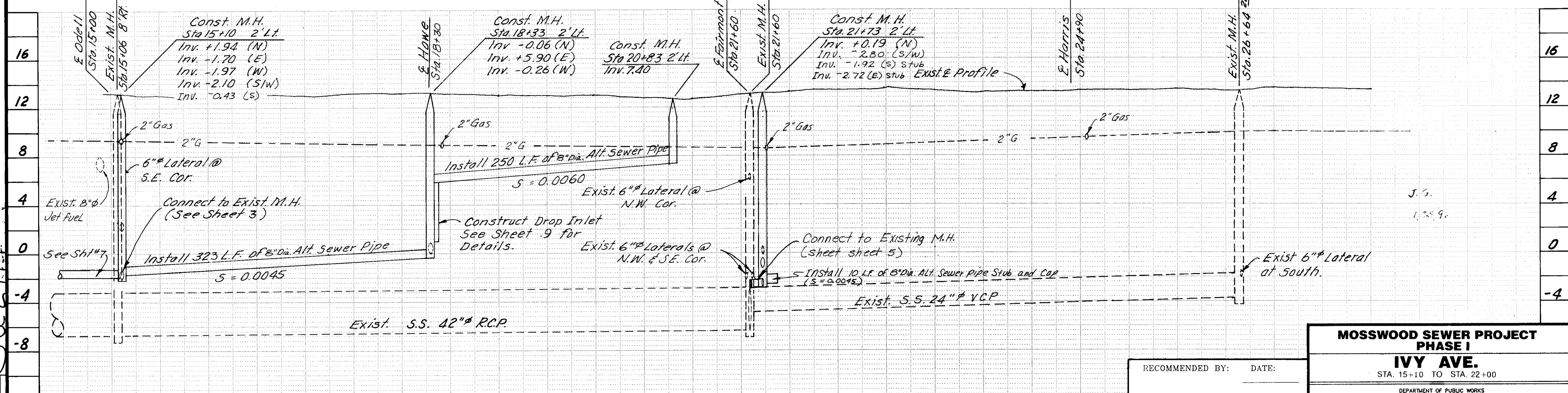
SCALE: NONE	APPROVED BY: DATE: 4/6/93	SHEET NO. 9
DESIGNED BY: D.G.	CITY ENGINEER	OF 10 SHEETS
DRAWN BY: A.P.T.	CITY ENGINEER	PROJECT NO.
CHECKED BY: [Signature]	STOCKTON, CALIF.	
RECORD DWG.:		

COUNTY OF SAN JOAQUIN

RECOMMENDED BY: DATE: DIRECTOR, MUNICIPAL UTILITIES DEPARTMENT

3693.80

DATE	REVISIONS	DRAWN BY	DATE	PROJECT ENGINEER	DATE	CHECKED	DATE	SUBMITTED	DATE	APPROVED	DATE
		A.P.T.		Dean A. Wilson	3/1/93	Dean A. Wilson	3/1/93	Manuel Salas	4/4/93	[Signature]	4/24/93
		FILE NAME	DRAWER	SHEET NO.	ACAD						
						C:\MOSS\1\DETAILS					



SU 2717

Cu. Yds.	Exc. Emb.											
STATIONS	15	16	17	18	19	20	21	22	23	24	25	
DRAWN BY	DATE	PROJECT ENGINEER	DATE	CHECKED	DATE	SUBMITTED	DATE	APPROVED	DATE	COUNTY OF SAN JOAQUIN		
A.P.T.		Dean & Nelson	3/1/73	Dean & Nelson	7/10/73	Manuel Alvar	6/21/73	[Signature]	6/21/73	PLAN SCALE 1" = 50'	PROFILE HORIZONTAL 1" = 50'	SCALE VERTICAL 1" = 4'
FILE NAME	DRAWER	SHEET NO.										

RECOMMENDED BY: \_\_\_\_\_ DATE: \_\_\_\_\_

DIRECTOR, MUNICIPAL UTILITIES DEPARTMENT

**MOSSWOOD SEWER PROJECT PHASE I**  
**IVY AVE.**  
 STA. 15+10 TO STA. 22+00

DEPARTMENT OF PUBLIC WORKS  
 CITY OF STOCKTON, CALIFORNIA

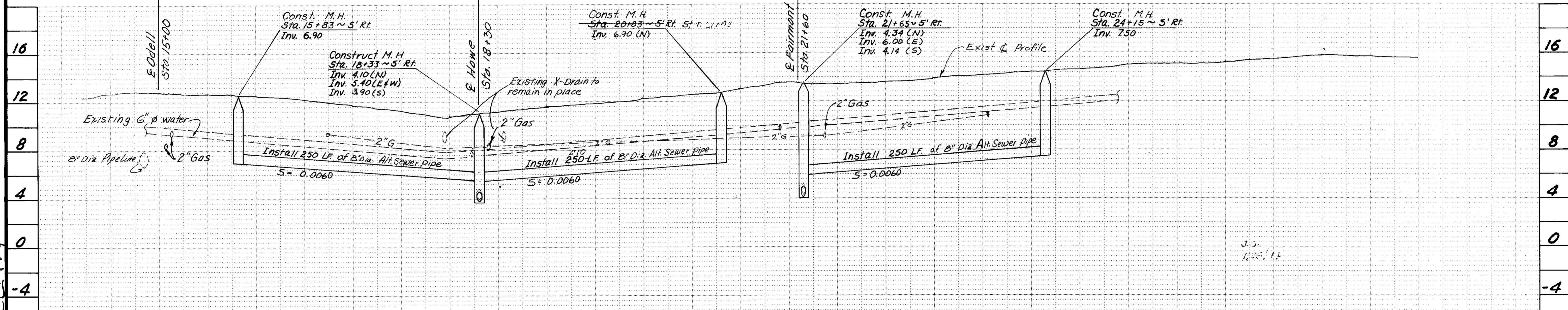
SCALE: NOTED  
 DESIGNED BY: D.G.  
 DRAWN BY: A.P.T.  
 CHECKED BY: [Signature]  
 RECORD DWG.:

APPROVED BY: [Signature] DATE: 6/21/73  
 CITY ENGINEER  
 STOCKTON, CALIF.

SHEET NO. 8  
 OF 10 SHEETS  
 PROJECT NO.

3693.7C





Su 2719

Cu. Yds.	Exc. Emb.										
15	16	17	18	19	20	21	22	23	24		
DATE	DATE	DATE	DATE	DATE	DATE	DATE	DATE	DATE	DATE		
DRAWN BY	DATE	PROJECT ENGINEER	DATE	CHECKED	DATE	SUBMITTED	DATE	APPROVED	DATE		
A.P.T.		Dean D. Wilson	7/1/93	Dean D. Wilson	7/10/93	Manuel Salinas	6/21/93	[Signature]	6/26/93		
FILE NAME	DRAWER	SHEET NO.									

COUNTY OF SAN JOAQUIN

PLAN SCALE 1" = 50'

PROFILE HORIZONTAL 1" = 50'  
SCALE VERTICAL 1" = 4'

PROJECT

RECOMMENDED BY: \_\_\_\_\_ DATE: \_\_\_\_\_  
DIRECTOR, MUNICIPAL UTILITIES DEPARTMENT

**MOSSWOOD SEWER PROJECT  
PHASE I  
LOWELL AVE.**  
STA. 15+00 TO STA. 25+00

DEPARTMENT OF PUBLIC WORKS  
CITY OF STOCKTON, CALIFORNIA

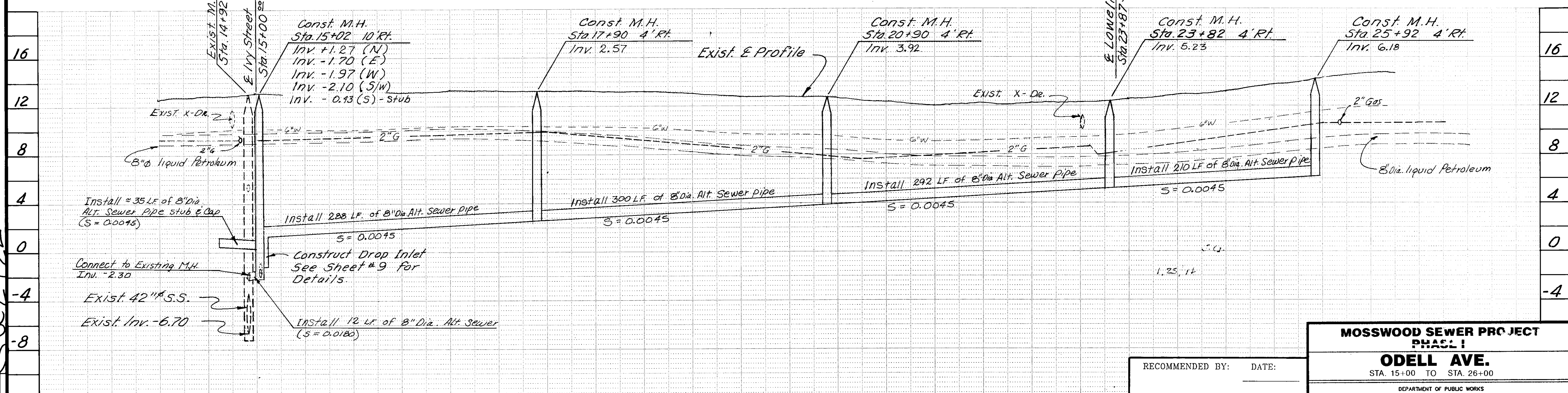
SCALE: NOTED	APPROVED BY: DATE: 6/26/93	SHEET NO. 6
DESIGNED BY: D.G.		OF 10 SHEETS
DRAWN BY: A.P.T.	[Signature]	PROJECT NO.
CHECKED BY: [Signature]	CITY ENGINEER	
RECORD DWG.:	STOCKTON, CALIF.	

3693.50

BRIDGE FILE INDEX NO.







SW 2772

Cu. Yds.	Exc. Emb.																		
14	15	16	17	18	19	20	21	22	23	RECOMMENDED BY: _____ DATE: _____					<b>MOSSWOOD SEWER PROJECT PHASE I</b> <b>ODELL AVE.</b> STA. 15+00 TO STA. 26+00 DEPARTMENT OF PUBLIC WORKS CITY OF STOCKTON, CALIFORNIA				
DRAWN BY: A.P.T. PROJECT ENGINEER: Sean J. Nelson DATE: 7/1/93 CHECKED: Sean J. Nelson DATE: 7/1/93 SUBMITTED: Manual Adams DATE: 6/21/93 APPROVED: [Signature] DATE: 6/24/93	COUNTY OF SAN JOAQUIN PLAN SCALE 1"=50' PROFILE HORIZONTAL 1"=50' SCALE VERTICAL 1"=4'										DIRECTOR, MUNICIPAL UTILITIES DEPARTMENT APPROVED BY: [Signature] DATE: 6/24/93 CITY ENGINEER STOCKTON, CALIF.								
FILE NAME	DRAWER	SHEET NO.															SCALE: NOTED DESIGNED BY: D.G. DRAWN BY: A.P.T. CHECKED BY: [Signature] RECORD DWG.:	SHEET NO. 3 OF 10 SHEETS PROJECT NO.	

3693.2C

BRIDGE FILE INDEX NO.

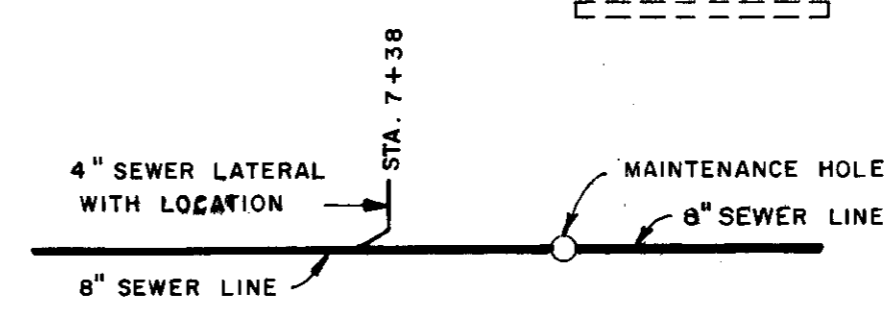


GENERAL NOTES

1. All elevations are U.S.G.S. datum.
2. The locations of the existing underground utilities are plotted from records obtained from the utility companies. The County shall not be responsible for the accuracy of such records and does not guarantee that the underground facilities are as shown. It is the Contractor's responsibility to field locate all underground facilities prior to excavation operations.
3. Existing water and gas mains are shown on the plans, but water and gas service laterals are not shown. The Contractor shall field locate all such service lines prior to excavation operations and shall protect them from damage.
4. The County reserves the right to revise the locations of the service laterals shown on these plans prior to their actual installation. No adjustment of compensation will be made for any relocated service laterals regardless of the reason for such relocation.
5. The Contractor shall protect and preserve all survey monument frame and covers. Where necessary, survey monument frame and cover shall be removed and reset. Full compensation for preserving and resetting survey monument frame and cover shall be considered as included in the other items of work involved and no additional compensation shall be provided.
6. All existing drainage ditches that are disturbed by construction activities shall be restored to their original condition and grade.
7. The Contractor shall contact the Underground Service Alert at (800) 642-2444 two working days prior to excavation operations. The Contractor shall also be responsible to contact Santa Fe Pacific Pipelines at (209) 465-7369 at least two working days prior to excavation operations on Odell Ave.
8. When excavations approach the approximate locations of the underground facilities, the exact location shall be determined by careful probing and hand digging. Once the facility is uncovered, adequate protection shall be provided to prevent damage to the existing facilities.
9. After the sanitary sewer pipe has been laid and backfilled, it shall be tested for watertightness as specified in Section 71-B, "Sanitary Sewers", of the special provisions.
10. The County has obtained a general construction storm water permit in accordance with the Clean Water Act, National Pollution Discharge Elimination System (NPDES) and State Water Board Order No. 92-08-DWQ.  
The Contractor shall be responsible for the preparation of the Storm Water Pollution Prevention Plan (SWPPP) as required by the NPDES regulations. The SWPPP shall be submitted to the County for approval prior to the start of construction operations. Two copies of the approved SWPPP shall be provided to the County. The contractor shall have one copy available on the job site.  
The Monitoring and Reporting Program shall be conducted by the County.
11. Notify City of Stockton prior to start of construction operations at (209) 944-8250.

LEGEND

- 2" G --- Existing Gas line and size
- 6" W --- Existing Water line and size
- 24" S --- Existing Sewer line and size
- 8" LP --- Existing Petroleum Pipeline and size
- ⊙ Existing Monument Frame and Cover
- ⊕ Existing Drainage Grate
- ⊞ Existing X-Dr. or Drainage pipe



NEW CONSTRUCTION

RECOMMENDED BY: DATE:

DIRECTOR, MUNICIPAL UTILITIES DEPARTMENT

MOSSWOOD SEWER PROJECT  
PHASE I  
GENERAL NOTES

DEPARTMENT OF PUBLIC WORKS  
CITY OF STOCKTON, CALIFORNIA

SCALE: NOTED	APPROVED BY: DATE: 4/16/92	SHEET NO. 2
DESIGNED BY: D.G.		OF 10 SHEETS
DRAWN BY: A.P.T.	<i>Paul M. Samalunga</i>	PROJECT NO.
CHECKED BY: <i>JA</i>	CITY ENGINEER	
RECORD DWG.:	STOCKTON, CALIF.	

3693.1C



SU2723

REVISIONS	DATE

DRAWN BY	DATE	PROJECT ENGINEER	DATE	CHECKED	DATE	SUBMITTED	DATE	APPROVED	DATE
<i>Alan H. Wilson</i>	3/1/92	<i>Dean H. Wilson</i>	3/2/92	<i>Arnold H. Wilson</i>	4/2/92	<i>MA</i>	4/29/92		

COUNTY OF SAN JOAQUIN

SCALE: 1" = 400'

FILE NAME	DRAWER	SHEET NO.	ACAD
C:\MOSS1\NOTES.DWG			

BRIDGE FILE INDEX NO.

COUNTY OF SAN JOAQUIN  
 DEPARTMENT OF PUBLIC WORKS  
 STOCKTON, CALIFORNIA  
 PROJECT PLANS FOR

# MOSSWOOD SEWER PROJECT PHASE I

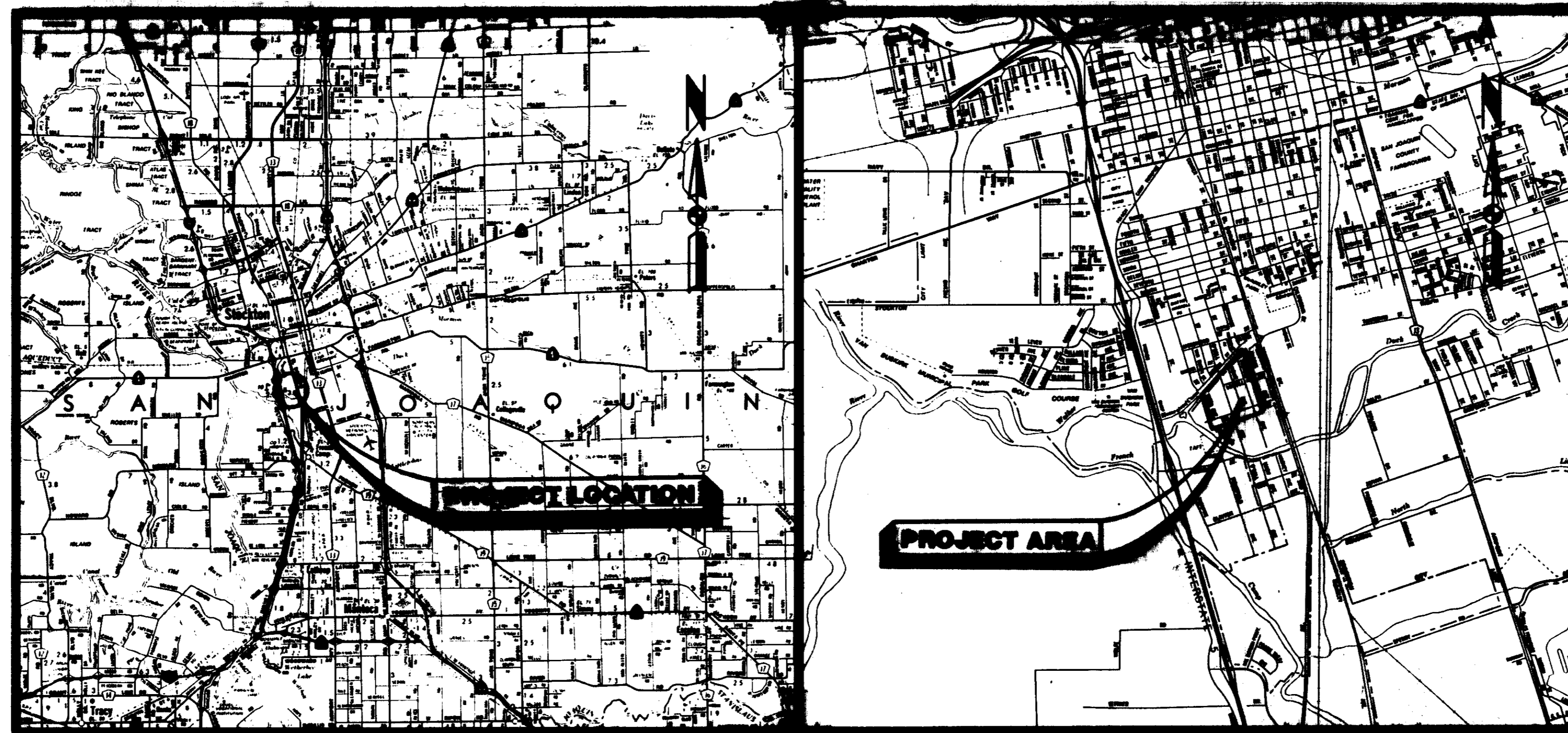
TO BE SUPPLEMENTED BY STANDARD PLANS DATED JULY 1992

**INDEX OF SHEETS**

- 1 TITLE SHEET
- 2 GENERAL NOTES
- 3 ODELL AVE.; STA. 15+00 TO STA. 26+00
- 4 HOWE AVE.; STA. 15+00 TO STA. 28+00
- 5 FAIRMONT AVE.; STA. 15+00 TO STA. 30+00
- 6 LOWELL AVE.; STA. 15+00 TO STA. 25+00
- 7 IVY AVE.; STA. 6+00 TO STA. 15+10
- 8 IVY AVE.; STA. 15+10 TO STA. 22+00
- 9 DETAILS
- 10 CONSTRUCTION NOTES

**- ABBREVIATIONS -**

- A.B. = Aggregate Base
- A.B.S. = Acrylonitrile-Butadiene-Styrene
- ALT. = Alternative
- A.C. = Asphalt Concrete
- A.C.P. = Asbestos Cement Pipe
- A.S. = Aggregate Subbase
- BIT. CD. = Bituminous Coated
- C.L. = Center Line
- C.P. = Concrete Pipe
- CONST. = Construct/Construction
- C.S.P. = Corrugated Steel Pipe
- C.S.P.A. = Corrugated Steel Pipe Arch
- D.I. = Drainage Inlet
- DR. = Drive
- E.P. = Edge of Pavement
- E.T.W. = Edge of Traveled Way
- F.L. = Flow Line
- GALV. = Galvanized
- L.F. = Linear Feet
- M.H. = Maintenance Hole
- N.R.C.P. = Non-Reinforced Concrete Pipe
- O.G. = Original Ground
- P.C.C. = Portland Cement Concrete
- PEN.TR. = Penetration Treatment
- P.L. = Property Line
- P.M.S. = Plant Mixed Surfacing
- P.V.C. = Polyvinyl-Chloride
- R.C.P. = Reinforced Concrete Pipe
- R. & D. = Remove and Dispose
- R. & S. = Remove and Salvage
- R./W. = Right of Way
- S.-DR. = Side Drain
- S.D.I. = Storm Drain Inlet
- S.P. = Standard Plans
- TC = Telephone Cable
- TYP. = Typical
- WW. = Walkway
- X-DR. = Cross Drain



PROJECT LOCATION MAP

PROJECT LOCATION MAP

**RECORD DRAWING**

Corrections By: \_\_\_\_\_  
 No. Changes By: J.G.  
 Date: 1/25/94  
 Engineers: \_\_\_\_\_ This Drawing Should Verify  
 The Site Of Work

COUNTY OF SAN JOAQUIN  
 Submitted July 6, 1993

Henry M. Hirata  
 HENRY M. HIRATA  
 R.C.E. 21258  
 Director of Public Works



CITY OF STOCKTON  
 Submitted June 18, 1993

James B. Giottonini  
 JAMES B. GIOTTONINI  
 R.C.E. 21228  
 Director of Public Works



MOSSWOOD SEWER PROJECT PHASE I	
TITLE SHEET	
DEPARTMENT OF PUBLIC WORKS CITY OF STOCKTON, CALIFORNIA	
RECOMMENDED BY: <u>Jeff A. Cameron</u> DIRECTOR, MUNICIPAL UTILITIES DEPARTMENT	DATE: <u>6-18-93</u>
DESIGNED BY: D.G.	APPROVED BY: DATE: <u>6/16/93</u>
DRAWN BY: A.P.T.	CHECKED BY: <u>[Signature]</u> CITY ENGINEER STOCKTON, CALIF.
RECORD DWG.:	SHEET NO. <u>1</u> OF 10 SHEETS PROJECT NO. _____

3693C

NO.	DESCRIPTION	DESIGNED BY	CHECKED BY	APPROVED BY	DATE

PROJECT ENGINEER	DATE	SEAL NO.	DATE	APPROVAL	RECOMMENDED BY	DATE
<u>Alan A. [Signature]</u>	<u>7/1/93</u>	<u>10000</u>	<u>7/1/93</u>	<u>[Signature]</u>	<u>[Signature]</u>	<u>7/1/93</u>
FILE NAME	DRAWER	SHEET NO.	C.A.D. FILE			
			C:\MOSS1\TS			

SU2724