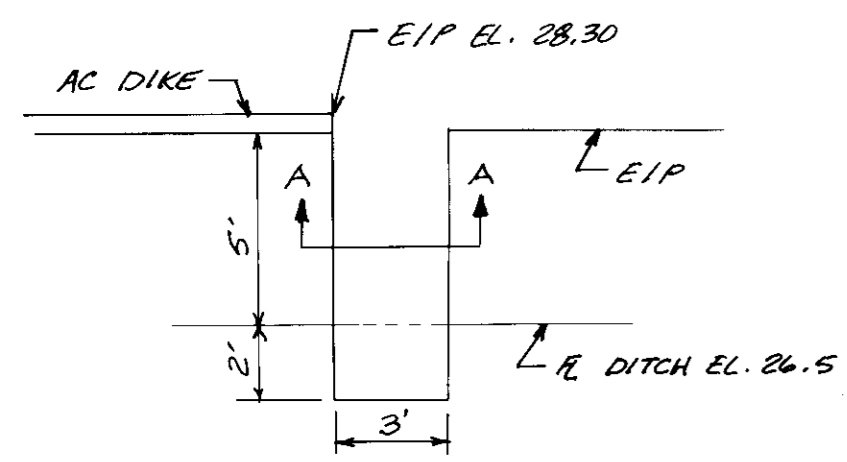
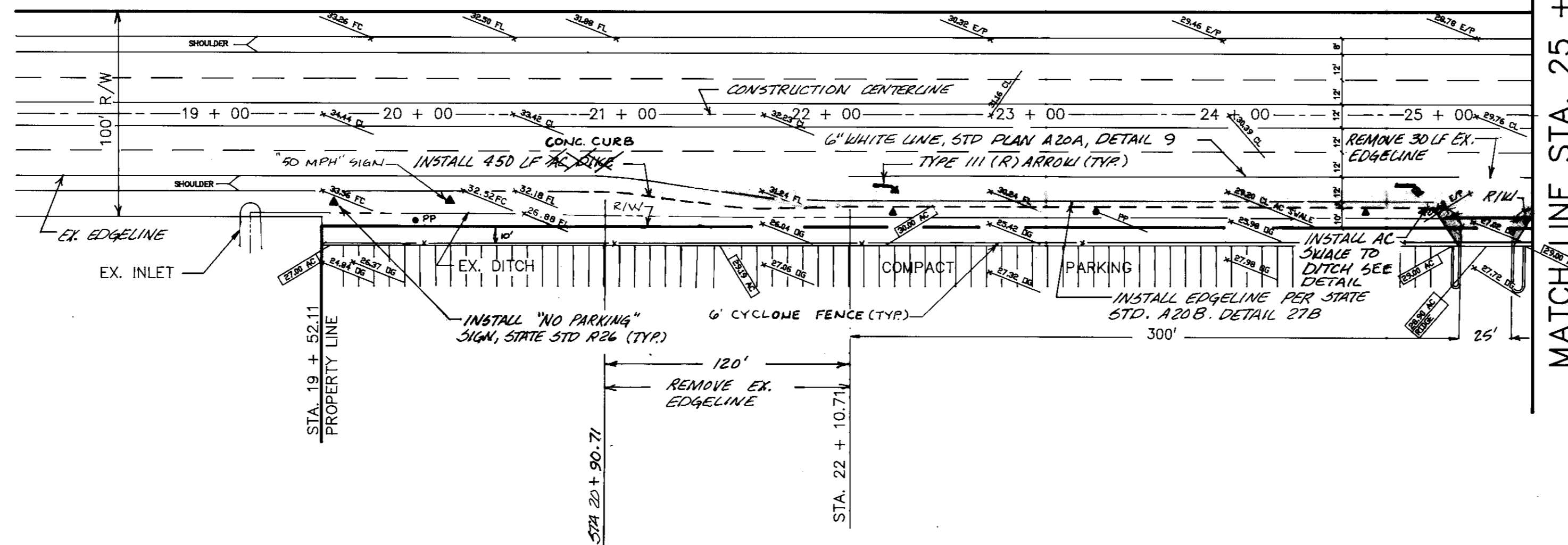


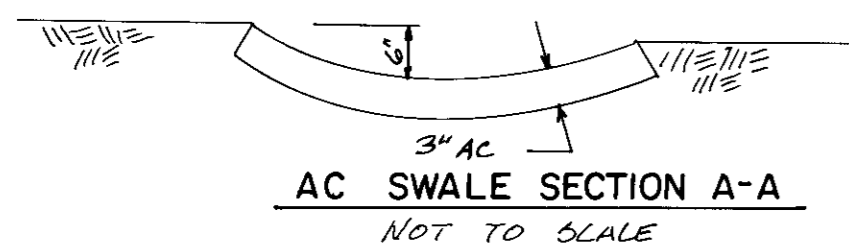
LOCATION MAP N.T.S.

WILSON WAY

MATCHLINE STA. 25 + 45.30

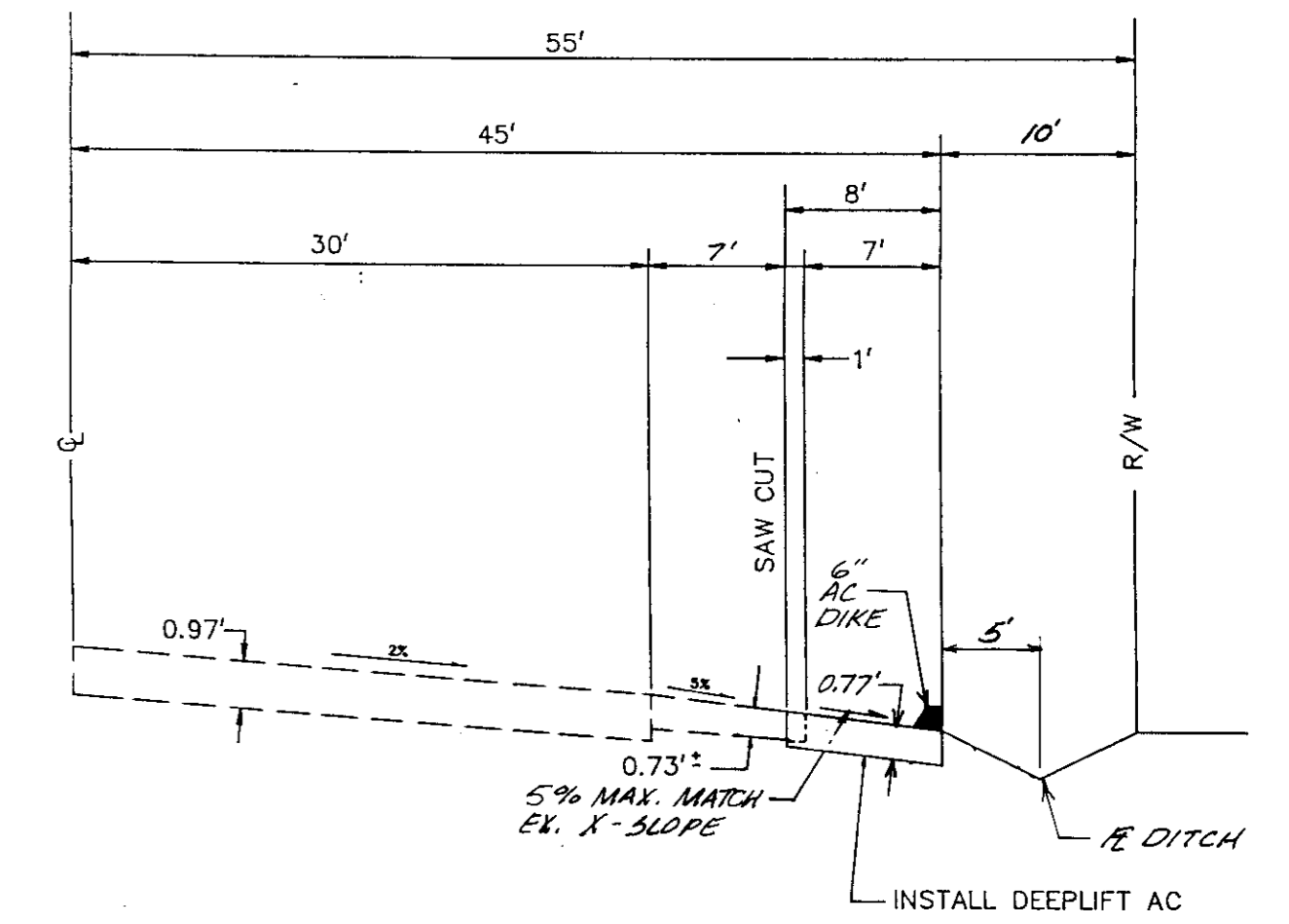


DETAIL AC SWALE NOT TO SCALE



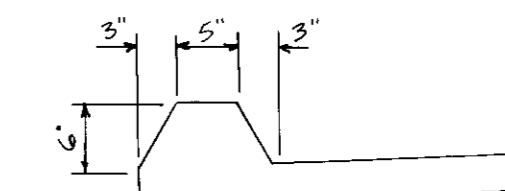
AC SWALE SECTION A-A NOT TO SCALE

SCALE:
HORIZONTAL: 1"=50'
VERTICAL: 1"=2'

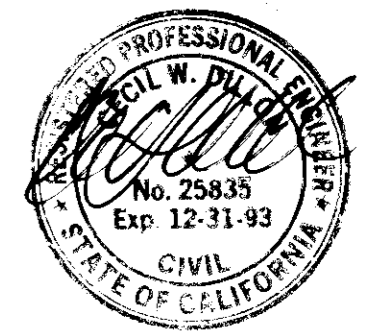


TYPICAL STREET SECTION
WILSON WAY
STA. 22 + 10.71 TO STA. 28 + 08.77

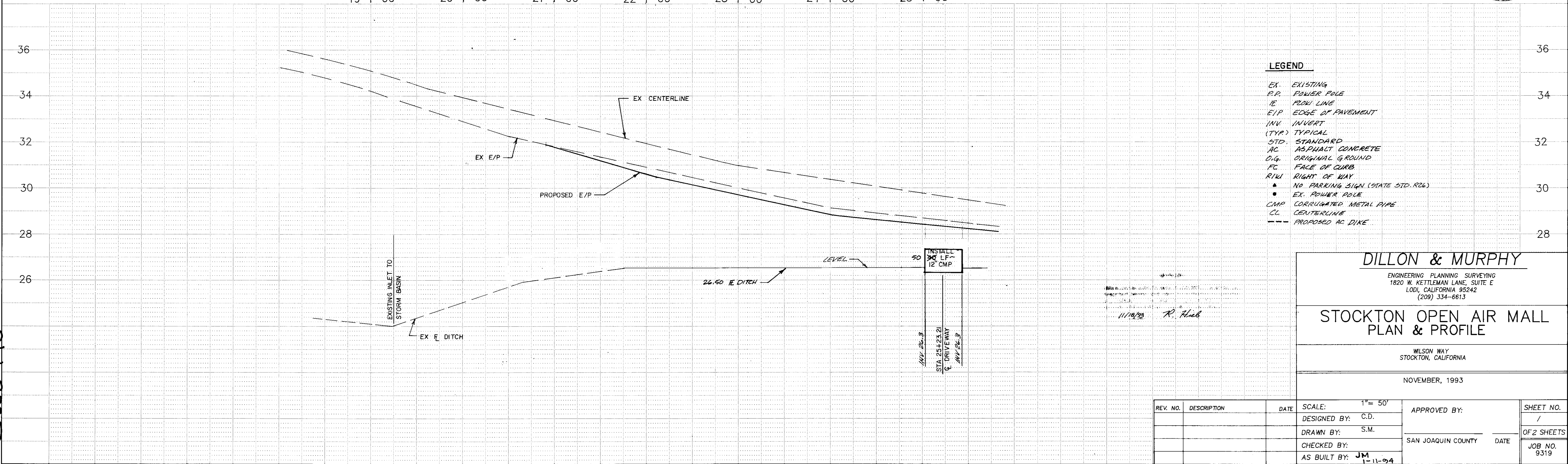
NOTE: WIDENING VARIES FOR 0' TO 8' STATION 21+35.71 TO 22+10.77.



6" AC DIKE DETAIL NOT TO SCALE



19 + 00 20 + 00 21 + 00 22 + 00 23 + 00 24 + 00 25 + 00



LEGEND

- EX. EXISTING
- P.P. POWER POLE
- PL. PROWL LINE
- E/P EDGE OF PAVEMENT
- INV. INVERT
- (TYP.) TYPICAL
- STD. STANDARD
- AC ASPHALT CONCRETE
- O.G. ORIGINAL GROUND
- FC FACE OF CURB
- R/W RIGHT OF WAY
- NO PARKING SIGN (STATE STD. R26)
- EX. POWER POLE
- CMP CORRUGATED METAL PIPE
- CL CENTERLINE
- PROPOSED AC DIKE

DILLON & MURPHY

ENGINEERING PLANNING SURVEYING
1820 W. KETTLERMAN LANE, SUITE E
LODI, CALIFORNIA 95242
(209) 334-6613

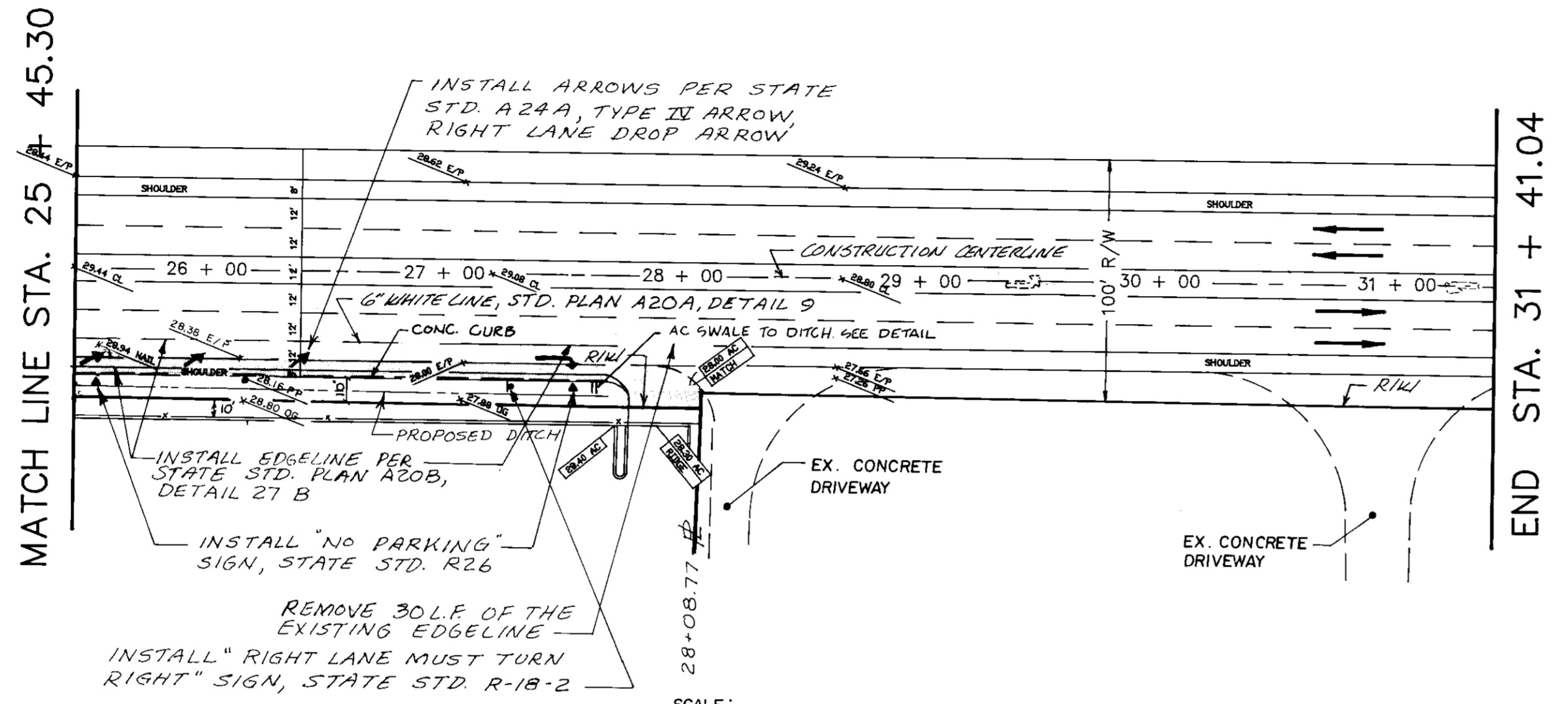
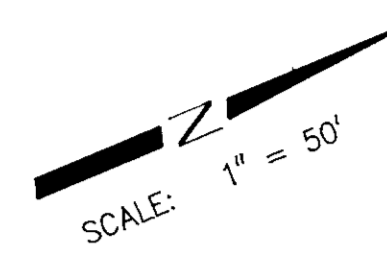
STOCKTON OPEN AIR MALL PLAN & PROFILE

WILSON WAY
STOCKTON, CALIFORNIA

NOVEMBER, 1993

REV. NO.	DESCRIPTION	DATE	SCALE: 1"=50'	APPROVED BY:	SHEET NO. / OF 2 SHEETS
			DESIGNED BY: C.D.		
			DRAWN BY: S.M.		
			CHECKED BY:	SAN JOAQUIN COUNTY DATE	JOB NO. 9319
			AS BUILT BY: JM	1-11-94	

Su2745



SCALE:
 HORIZONTAL: 1" = 50'
 VERTICAL: 1" = 2'



Sw2746

26 + 00 27 + 00 28 + 00 29 + 00 30 + 00 31 + 00



DILLON & MURPHY
 ENGINEERING PLANNING SURVEYING
 1820 W. KETLEMAN LANE, SUITE E
 LODI, CALIFORNIA 95242
 (209) 334-6613

**STOCKTON OPEN AIR MALL
 PLAN & PROFILE**

WILSON WAY
 STOCKTON, CALIFORNIA

NOVEMBER, 1993

REV. NO.	DESCRIPTION	DATE	SCALE: 1" = 50'	DESIGNED BY: C.D.	APPROVED BY:	SHEET NO. 2
				DRAWN BY: S.M.		OF 2 SHEETS
				CHECKED BY:	SAN JOAQUIN COUNTY	JOB NO. 9319
				AS BUILT BY: JM	DATE	