

BU 2775

REVISIONS	DATE

EARTHWORK (MISC. AREAS)	
Location	Quantity
OAK STREET: Sta. 6+00 to Sta. 14+37 (Rt.) Sta. 5+75 to Sta. 14+13 (Lt.) Sta. 14+13 to Sta. 14+50 (Lt.) Sta. 14+50 to Sta. 14+60 Rt.	8.37 Stations 8.38 Stations 0.37 Stations 0.29 Stations
ALICE AVENUE: Sta. 0+00 to Sta. 3+60 (Rt.) Sta. 0+00 to Sta. 5+40 (Lt.) Sta. 6+57 to Sta. 9+09 (Lt.) Sta. 7+51 to Sta. 8+81 (Rt.)	3.60 Stations 5.40 Stations 2.52 Stations 1.30 Stations
LOUISA AVENUE: Sta. 7+20 to Sta. 9+80 (Rt.) Sta. 6+91 to Sta. 9+50 (Lt.)	2.60 Stations 2.59 Stations
Total	34.86 Stations

DRIVEWAY (Type B)	
Location	Quantity
OAK STREET: Sta. 8+67 Lt.	24 S.Y.
ALICE AVE: Sta. 2+00 Rt. Sta. 7+32 Lt.	6 S.Y. 31 S.Y.
Total	61 S.Y.

DRIVEWAYS (Type D)	
Location	Quantity
OAK STREET: Sta. 9+76 Rt. Sta. 10+13 Rt. Sta. 10+26 Rt. Sta. 11+00 Rt. Sta. 11+90 Lt. Sta. 12+10 Lt. Sta. 12+27 Rt. Sta. 13+13 Rt. Sta. 13+16 Lt. Sta. 13+62 Rt. Sta. 13+68 Lt. Sta. 14+33 Lt.	17 S.Y. 17 S.Y. 17 S.Y. 17 S.Y. 17 S.Y. 20 S.Y. 17 S.Y. 17 S.Y. 17 S.Y. 17 S.Y. 26 S.Y. 58 S.Y.
ALICE AVENUE: Sta. 1+75 Rt. Sta. 2+72 Rt. Sta. 3+25 Rt. Sta. 3+76 Lt. Sta. 4+17 Lt. Sta. 5+01 Lt. Sta. 7+00 Lt. Sta. 7+49 Lt. Sta. 8+35 Lt.	17 S.Y. 26 S.Y. 17 S.Y. 17 S.Y. 17 S.Y. 17 S.Y. 19 S.Y. 19 S.Y. 23 S.Y.
LOUISA AVENUE: Sta. 8+62 Lt.	17 S.Y.
Total	426 S.Y.

DRIVEWAYS (Type E)	
Location	Quantity
ALICE AVENUE: Sta. 1+81 Lt.	29 S.Y.
Total	29 S.Y.

ASPHALT CONCRETE (Type B)	
Location	Quantity
OAK STREET: Roadway: Sta. 5+33 to Sta. 14+13	170 Tons
Laterals: Intersections Alice Ave. & Louisa Ave.	15 Tons
Driveways: Alice Ave. to Louisa Ave.	43 Tons
ALICE AVENUE: Cross Drain: Sta. 8+60	4 Tons
Driveways: Oak St. to Louisa Ave.	31 Tons
LOUISA AVENUE: Driveways: Alice Ave. to Oak Ave.	3 Tons
Total	266 Tons

A.C. (Misc. Areas) (Trench Repair 0.50')	
Location	Quantity
OAK STREET: Roadway: Sta. 5+33 to Sta. 14+13	511 S.Y.
Laterals: Intersections Alice Ave. & Louisa Ave.	45 S.Y.
ALICE AVENUE: Cross Drain: Sta. 8+60	12 S.Y.
Total	568 S.Y.

12" ALTERNATIVE PIPE	
Location	Quantity
OAK STREET: Laterals: Sta. 8+26 (S.W. Cor.) Sta. 8+26 (S.E. Cor.) Sta. 8+26 (North) Sta. 14+33 (South) Sta. 14+33 (N.W. Cor.) Sta. 14+33 (S.E. Cor.)	57 L.F. 33 L.F. 17 L.F. 49 L.F. 26 L.F. 27 L.F.
Total	209 L.F.

12" R.C.P. (Class V)	
Location	Quantity
ALICE AVENUE: Sta. 8+60 X-Drain	34 L.F.
Total	34 L.F.

12" R.C. DRIVEWAY PIPE (CLASS IV)	
Location	Quantity
OAK STREET: Sta. 13+16 Lt. Sta. 13+68 Lt.	24 L.F. 28 L.F.
ALICE AVENUE: Sta. 1+75 Rt. Sta. 1+81 Lt. Sta. 2+00 Rt. Sta. 2+72 Rt. Sta. 3+25 Rt. Sta. 7+00 Lt. Sta. 7+32 Lt. Sta. 7+49 Lt. Sta. 8+35 Lt.	24 L.F. 32 L.F. 10 L.F. 30 L.F. 26 L.F. 24 L.F. 25 L.F. 17 L.F. 30 L.F.
LOUISA AVENUE: Sta. 8+62 Lt.	24 L.F.
Total	294 L.F.

18" ALTERNATIVE PIPE	
Location	Quantity
OAK STREET: Sta. 8+26 to Sta. 14+33	599 L.F.
Total	599 L.F.

30" ALTERNATIVE PIPE	
Location	Quantity
OAK STREET: Sta. 5+33 to Sta. 8+26	283 L.F.
Total	283 L.F.

MANHOLE (M.H.)	
Location	Quantity
OAK STREET: Sta. 8+26	1 Each
Sta. 11+20	1 Each
Sta. 14+33	1 Each
Total	3 Each

18" STORM DRAIN INLET (S.D.I.)	
Location	Quantity
OAK STREET: Sta. 7+77 Rt. Sta. 8+26 Lt. Sta. 8+57 Rt. Sta. 14+13 Lt. Sta. 14+37 Rt. Sta. 14+60 Rt.	1 EA. 1 EA. 1 EA. 1 EA. 1 EA. 1 EA.
LOUISA AVE: Sta. 0+45 Rt.	1 EA.
Total	8 EA.

FRAME & GRATE (S.D.I.)	
Location	Quantity
OAK STREET: Sta. 7+77 Rt. Sta. 8+26 Lt. Sta. 8+57 Rt. Sta. 13+83 Lt. Sta. 14+13 Lt. Sta. 14+37 Rt. Sta. 14+60 Rt.	1 EA. 1 EA. 1 EA. 1 EA. 1 EA. 1 EA. 1 EA.
LOUISA AVE: Sta. 0+45 Rt.	1 EA.
Total	8 EA.

FRAME & COVER (MANHOLE)	
Location	Quantity
OAK STREET: Sta. 8+26	1 Each
Sta. 11+20	1 Each
Sta. 14+33	1 Each
Total	3 Each

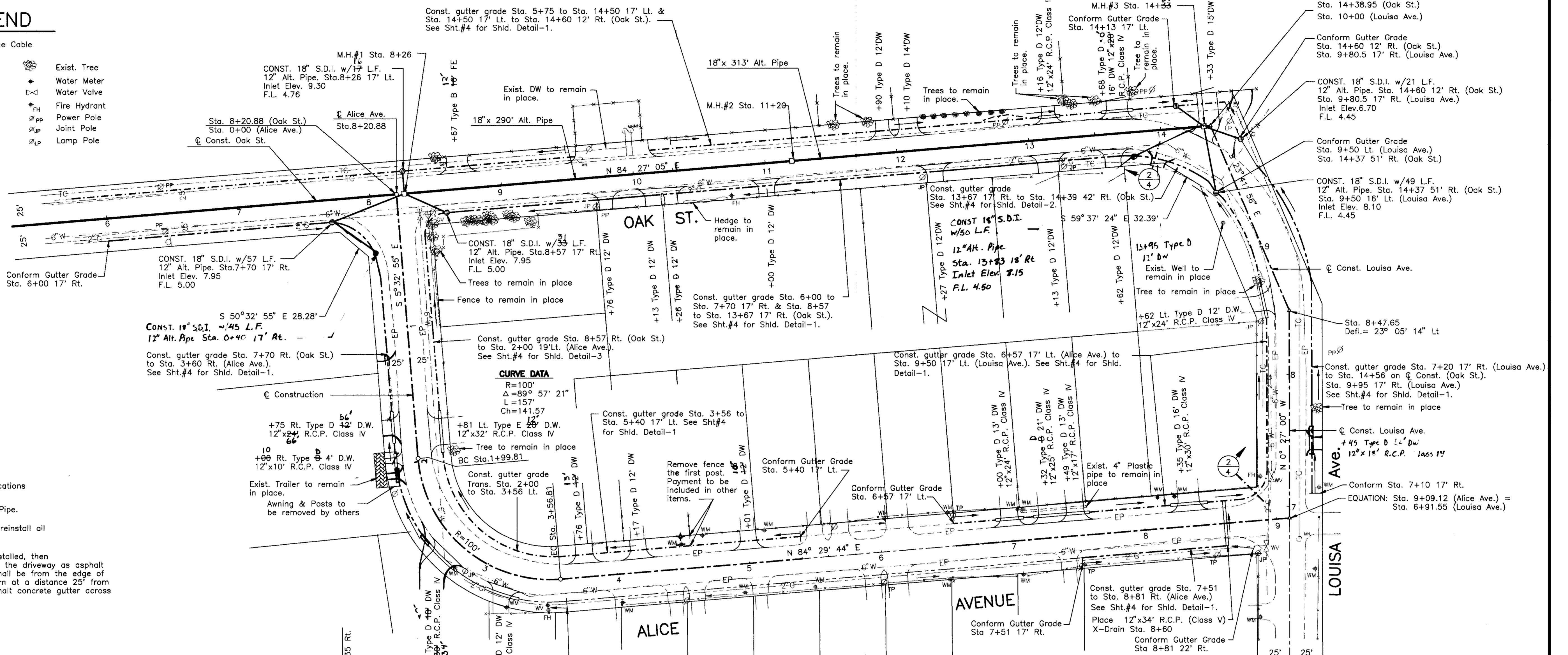
ALTERNATIVE PIPE					
Allowable Pipe Material					
DESIGNATION	PVC		RCP		PLASTIC
	SIZE	SDR	SIZE	CLASS	SIZE
12" Alt. Pipe	12"	35	12"	III	
18" Alt. Pipe			18"	III	18" #
30" Alt. Pipe			30"	III	30" #

DRAWN BY J.C. WHITE	DATE 1/1/94	PROJECT ENGINEER <i>J.C. White</i>	DATE 2/17/94	CHECKED <i>Dean A. Wilson</i>	DATE 2/22/94	SUBMITTED <i>Manuel Jesus</i>	DATE 2/22/94	APPROVED <i>[Signature]</i>	DATE 2/22/94	COUNTY OF SAN JOAQUIN	PLAN SCALE: None	CONSTRUCTION NOTES	PROJECT	THORNTON DRAINAGE PROJECT PHASE 4	SHEET NO. 5	TOTAL SHEETS 5
FILE NAME	DRAWER	SHEET NO.	ACAD F:\THORNPH4\SHEETS													

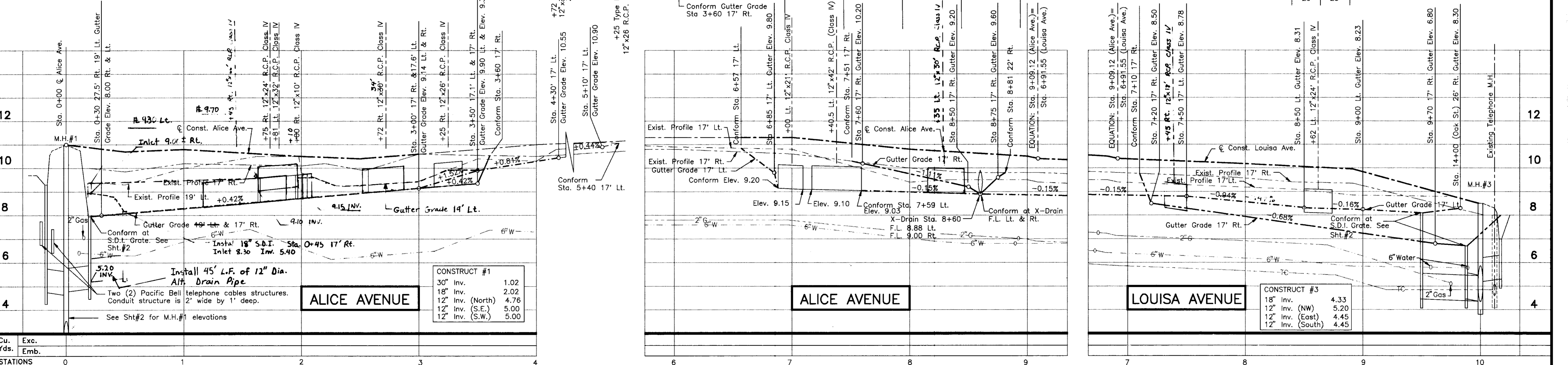
RECORD DRAWING

LEGEND

- TC --- Exist. Underground Telephone Cable
- G --- Exist. Gas Line
- 6"W --- Exist. Water Line
- - - - - Exist. Profile 17' Lt.
- X --- Exist. Fence
- --- Exist. Manhole
- Exist. Profile 17' Rt.
- Gutter Grade 17' Lt.
- Gutter Grade 17' Rt.
- Grade to Drain
- Street Sign
- --- Exist. Tree
- ⊕ --- Water Meter
- ⊕ --- Water Valve
- ⊕ --- Fire Hydrant
- ⊕ --- Power Pole
- ⊕ --- Joint Pole
- ⊕ --- Lamp Pole



- Notes:**
1. See Construction Notes on Sheet#5 for locations of A.C. Misc. Areas (Trench Repair).
 2. Alt. Pipe denotes Alternative Storm Sewer Pipe.
 3. The Contractor shall remove, salvage and reinstall all signs as directed by the Engineer.
 4. If a driveway does not have pipe to be installed, then the gutter grade shall be continued across the driveway as asphalt concrete gutter. The gutter cross slopes shall be from the edge of pavement to gutter grade and then conform at a distance 25' from centerline of construction, creating an asphalt concrete gutter across the driveway.



Cu. Yds. Exc. Emb.	Exc.	Emb.			
STATIONS	0	1	2	3	4

DATE	DATE	DATE	DATE	DATE	DATE	DATE	DATE
11/12/93	7/12/94	7/12/94	7/12/94	7/12/94	7/12/94	7/12/94	7/12/94
J.C. White	J.C. White	Kevin A. Nelson	Kevin A. Nelson	Kevin A. Nelson	Kevin A. Nelson	Kevin A. Nelson	Kevin A. Nelson
PROJECT ENGINEER	CHECKED	SUBMITTED	APPROVED				

COUNTY OF SAN JOAQUIN

PLAN SCALE: 1" = 40'

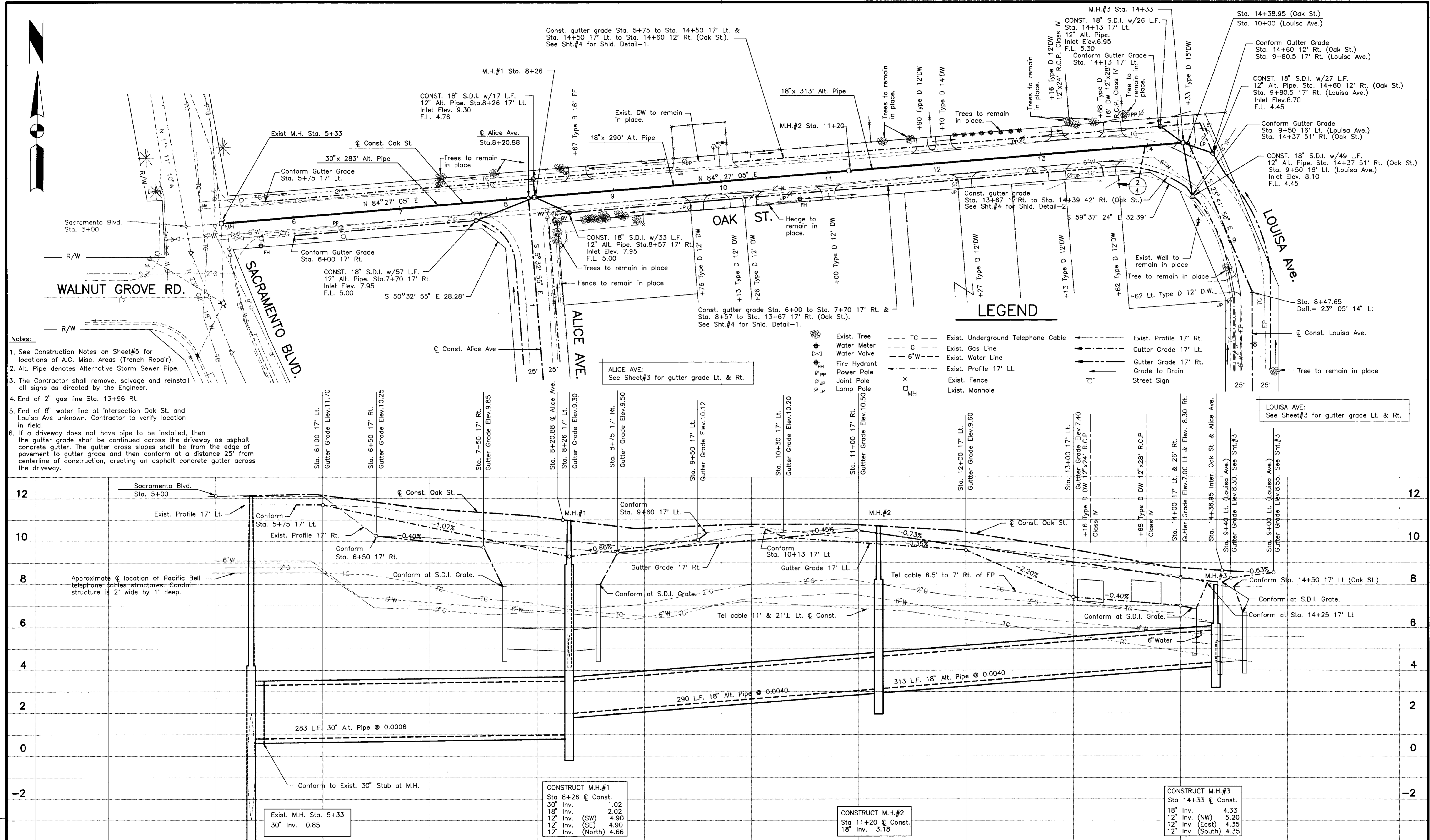
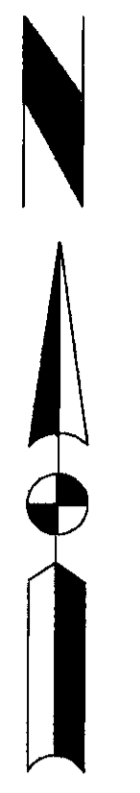
PROFILE SCALE: HORIZONTAL 1" = 40' VERTICAL 1" = 2'

PROJECT THORNTON DRAINAGE PROJECT PHASE 4

SHEET NO. 3 TOTAL SHEETS 5

FILE NAME	DRAWER	SHEET NO.	ACAD
			F:\THORNPH4\SHEET3

SU. 2773



- Notes:**
- See Construction Notes on Sheet#5 for locations of A.C. Misc. Areas (Trench Repair).
 - Alt. Pipe denotes Alternative Storm Sewer Pipe.
 - The Contractor shall remove, salvage and reinstall all signs as directed by the Engineer.
 - End of 2" gas line Sta. 13+96 Rt.
 - End of 6" water line at intersection Oak St. and Louisa Ave unknown. Contractor to verify location in field.
 - If a driveway does not have pipe to be installed, then the gutter grade shall be continued across the driveway as asphalt concrete gutter. The gutter cross slopes shall be from the edge of pavement to gutter grade and then conform at a distance 25' from centerline of construction, creating an asphalt concrete gutter across the driveway.

LEGEND

- TC --- Exist. Underground Telephone Cable
- G --- Exist. Gas Line
- 6" W --- Exist. Water Line
- --- Exist. Profile 17' Lt.
- --- Gutter Grade 17' Lt.
- --- Gutter Grade 17' Rt.
- --- Grade to Drain
- --- Street Sign
- --- Exist. Manhole
- --- Exist. Fence
- --- Exist. Profile 17' Lt.
- --- Gutter Grade 17' Lt.
- --- Gutter Grade 17' Rt.
- --- Grade to Drain
- --- Street Sign
- --- Exist. Manhole

Cu. Yds.	Exc.	Emb.	STATIONS	5	6	7	8	9	10	11	12	13	14						
DRAWN BY	DATE	PROJECT ENGINEER	DATE	CHECKED	DATE	SUBMITTED	DATE	APPROVED	DATE	COUNTY OF SAN JOAQUIN				PLAN SCALE: 1" = 40'	PROFILE SCALE: HORIZONTAL 1" = 40' VERTICAL 1" = 2'	PROJECT	THORNTON DRAINAGE PROJECT PHASE 4	SHEET NO.	TOTAL SHEETS
J.C. WHITE	11/12/93	J.C. White	2/1/94	Dean & Silman	2/25/94	Harold Selwin	3/2/94	[Signature]	2/29/94	COUNTY OF SAN JOAQUIN				PLAN SCALE: 1" = 40'	PROFILE SCALE: HORIZONTAL 1" = 40' VERTICAL 1" = 2'	PROJECT	THORNTON DRAINAGE PROJECT PHASE 4	2	5
FILE NAME	DRAWER	SHEET NO.	ACAD	F:\THORNPH4\SHEET2															

SU 2778

REVISIONS

COUNTY OF SAN JOAQUIN
 DEPARTMENT OF PUBLIC WORKS

STOCKTON, CALIFORNIA

PROJECT PLANS FOR

**THORNTON DRAINAGE PROJECT
 PHASE 4**

COUNTY OF SAN JOAQUIN

Submitted March 1 1994

Manuel Lopez
 For HENRY M. HIRATA R.C.E. 21258
 Director of Public Works



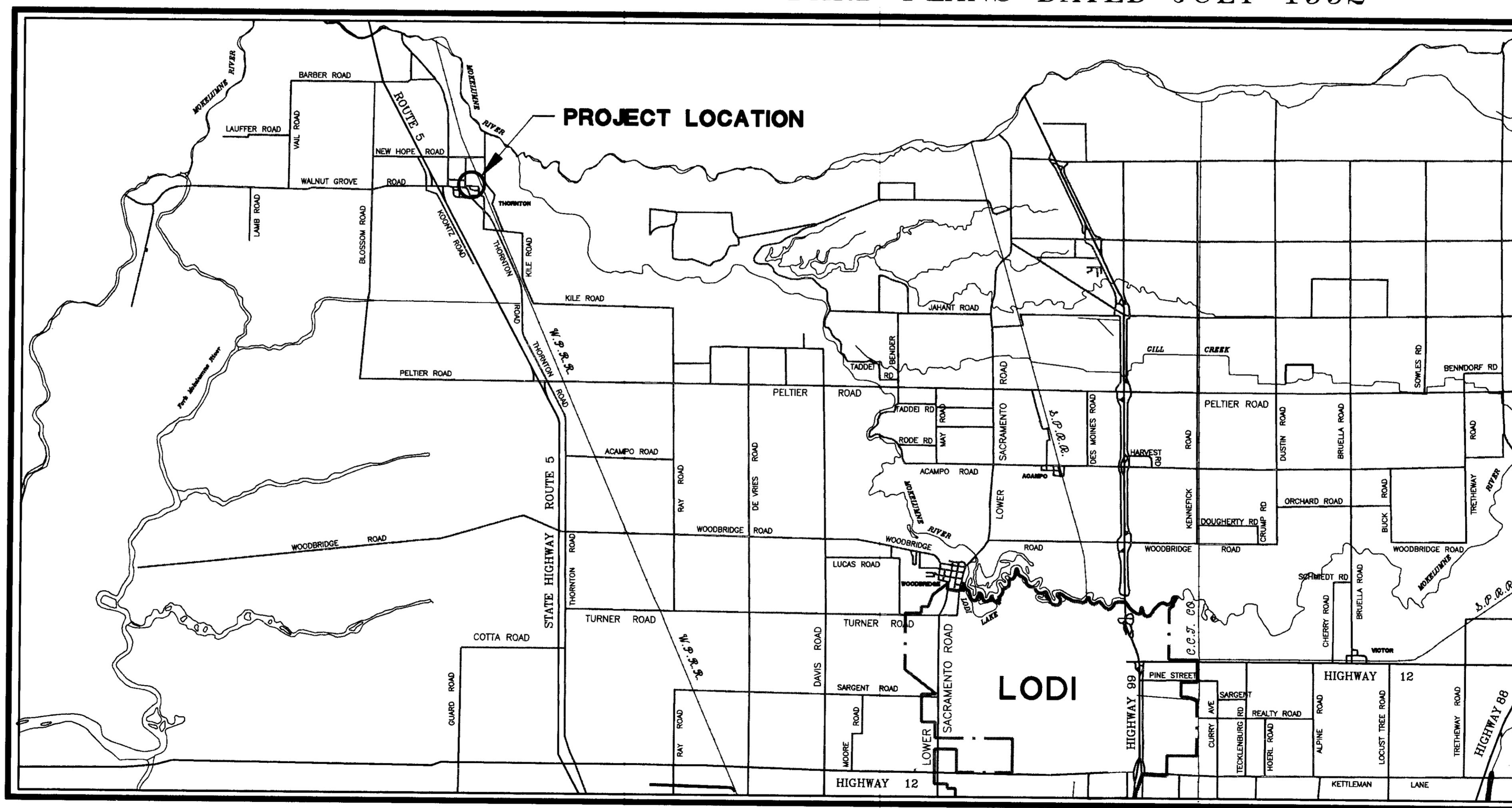
INDEX OF SHEETS

SHEET NO.	DESCRIPTION
1	Title Sheet
2	Plan & Profile (Oak Street)
3	Plan & Profile (Alice & Louisa Avenue)
4	Construction Details
5	Construction Notes

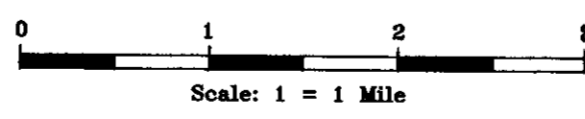
- ABBREVIATIONS -

A.B.	=	Aggregate Base
ALT.	=	Alternative
A.C.	=	Asphalt Concrete
A.C.P.	=	Asbestos Cement Pipe
A.S.	=	Aggregate Subbase
BIT. CD.	=	Bituminous Coated
C.I.P.	=	Cast In Place
C.L. or C	=	Center Line
C.P.	=	Concrete Pipe
CONST.	=	Construct/Construction
C.S.P.	=	Corrugated Steel Pipe
C.S.P.A.	=	Corrugated Steel Pipe Arch
D.I.	=	Drainage Inlet
DIA.	=	Diameter
DR.	=	Driveway
E.P.	=	Edge of Pavement
E.T.W.	=	Edge of Traveled Way
F.L.	=	Flow Line
GALV.	=	Galvanized
HDPE	=	High Density Poly Ethylene
L.F.	=	Linear Feet
M.H.	=	Manhole
N.R.C.P.	=	Non-Reinforced Concrete Pipe
O.G.	=	Original Ground
P.C.C.	=	Portland Cement Concrete
P.L.	=	Property Line
P.M.S.	=	Plant Mixed Surfacing
PVC	=	PolyVinyl Chloride
R.C.P.	=	Reinforced Concrete Pipe
R. & D.	=	Remove and Dispose
R. & S.	=	Remove and Salvage
R. / W.	=	Right of Way
S.-DR.	=	Side Drain
S.D.I.	=	Storm Drain Inlet
S.P.	=	Standard Plans
TC	=	Telephone Cable
TYP.	=	Typical
WW.	=	Walkway
X-DR.	=	Cross Drain

TO BE SUPPLEMENTED BY STANDARD PLANS DATED JULY 1992



PROJECT LOCATION MAP



REVISIONS					
NO.	DESCRIPTION	DRWN BY	CKD BY	APP BY	DATE

Project Engineer	Date	Senior Engineer	Date	Approval Recommended By	Date
<i>J.C. White</i>	<i>4/7/94</i>	<i>Manuel Lopez</i>	<i>7/25/94</i>	<i>H.M. Hirata</i>	<i>7/26/94</i>
FILE NAME	DRAWER	SHEET NO.	ACAD		
F:\Thornt4\Titlesht					

SU 2779