

SU-2924

### Pole and Equipment Schedule

Location No.	Standard		Vehicle Signal		Ped. Signal		PPB	Luminaire	67' Sign	Notes		
	Type	Sig. Arm	Lum. Arm	MA Mount	Pole Mount	Ø	Mount	Ø	Arrow		Size	Wording
Ⓐ	29-5-80	55	15	MAS	5Y	-	-	-	-	250W HPS	CALIFORNIA PLAZA DRIVE	Install '5Y' term comp. for #1 & #6 MAS terminations.
Ⓑ	1-B, 15'	-	-	-	5Y-2-TD	-	-	-	-	-	-	-
Ⓒ	18-3-80	20	-	MAS	5Y	-	-	-	-	-	Schulte Rd.	Install '5Y' term comp. for #8 MAS termination.
Ⓓ	1-B, 15'	-	-	-	5Y-2-TD	8P	5P-1-T	8P	←	-	-	-
Ⓔ	26-4-80	45	15	MAS	5Y-1-T	2P	5P-1-T	8P	←	250W HPS	CALIFORNIA PLAZA DRIVE	-
Ⓕ	1B	-	-	-	TY-1-T	8P	5P-1-T	2P	→	-	-	-
Ⓖ	15	-	15	-	5Y-2-TD	2P	5P-1-T	2P	→	250W HPS	-	Install PEC atop pole.



**Greiner, Inc.**  
 A GREINER ENGINEERING COMPANY  
 ENGINEERS • PLANNERS • SURVEYORS • LANDSCAPE ARCHITECTS  
 2800 TRACY BOULEVARD • SUITE 4 • TRACY, CA 95376  
 PHONE: (209) 833-3382 FAX: (209) 833-3387

**STREET IMPROVEMENT PLANS**  
 TRAFFIC SIGNAL PLAN - SCHULTE AND CALIFORNIA PLAZA DRIVE  
 MS 94-45  
 FREEWAY SERVICE PHASE I  
 SAN JOAQUIN COUNTY, CALIFORNIA

DATE: 8-1-95  
 BY: Plans  
 CHECKED: Lyle Barks  
 DATE: 8-1-95  
 BY: Final  
 SHEET NO. TS-2  
 OF 2 SHEETS  
 JOB NO.  
 FILE NO.

### Conductor Schedule

AWG Size	Conduit Size	2'	3'	2'	2 1/2'	2 1/2'	2'	3'	3 1/2'								
	Conduit Run	△	△	△	△	△	△	△	△								
	VEHICLE SIGNAL																
	#1				3	6			6								
	#2						3	3	6								
	#6	3	3	3	3	3	3	3	3								
	#8	3	6	3	3	3			3	12							
	PER SIGNAL																
14	#2P				2	2	2	2	2	4							
	#8P	2	2		2	2	2	2	2	4							
	PPB																
	#2P				1	1		1	2								
	#8P	1	1		1	1	1	1	2								
	12K NEUTRAL PEU	1	1		1	1	1	1	2								
	SPARES	3	3	3	3	3	3	3	6								
	TOTAL NO. 14	13	16	9	30	40	10	16	33								
PLC	#1					1	1	1									
	#2					6	3	3	6								
	#6					2	2	2									
	#8					2	2	2									
	TOTAL PLC	-	-	-	-	6	6	6	12								
	OPTICOM CABLE	-	1	-	2	2	1	1	3								
No. 8	LUMINAIRES																
	120V NEUTRAL	1	1	1	1	1	1	1	2								
	TOTAL NO. 8	1	1	1	3	3	3	3	2								
No. 6	SERVICE								2								

- Notes**
- Phase B '5Y' head at B shall be RA, YA, GA.
  - Phase B MAS head at C shall be RA, YA, GA.
  - Signal standards in paved or unpaved shoulders shall be installed 6ft to EP/ETM. Signal standards installed in sidewalks shall provide 2ft clearance to any portion of equipment.
  - Manufacturer of mastarm poles is put on notice of the existence of unusual "wind" conditions in the project area, and shall provide "harmonic dampeners" as required.

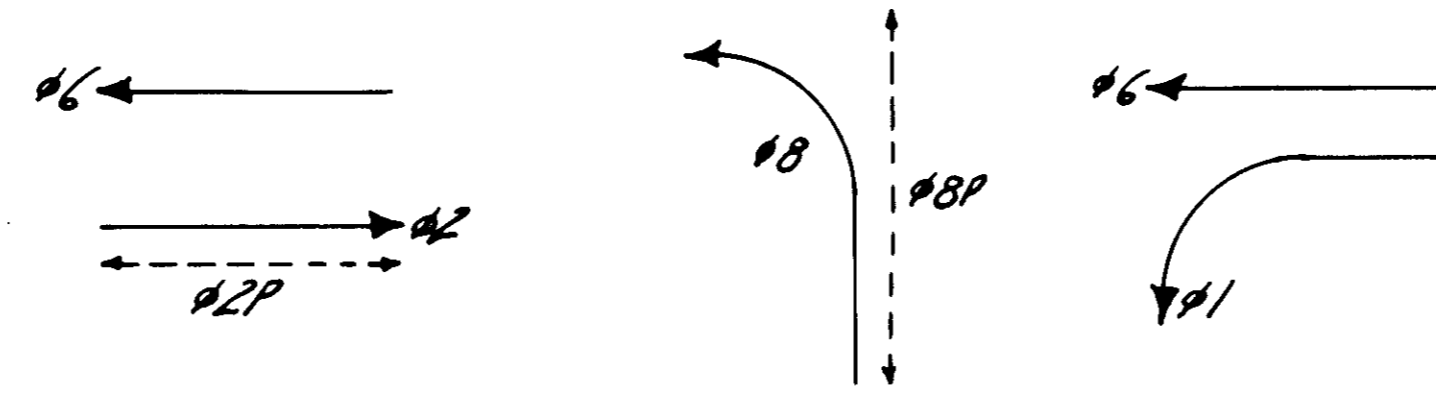


**Greiner, Inc.** - A GENERAL ENGINEERING COMPANY  
 ENGINEERS • PLANNERS • SURVEYORS • LANDSCAPE ARCHITECTS  
 2880 TRACY BOULEVARD • SUITE 4 • TRACY, CA 95376  
 PHONE: (209) 833-3333 FAX: (209) 833-3337

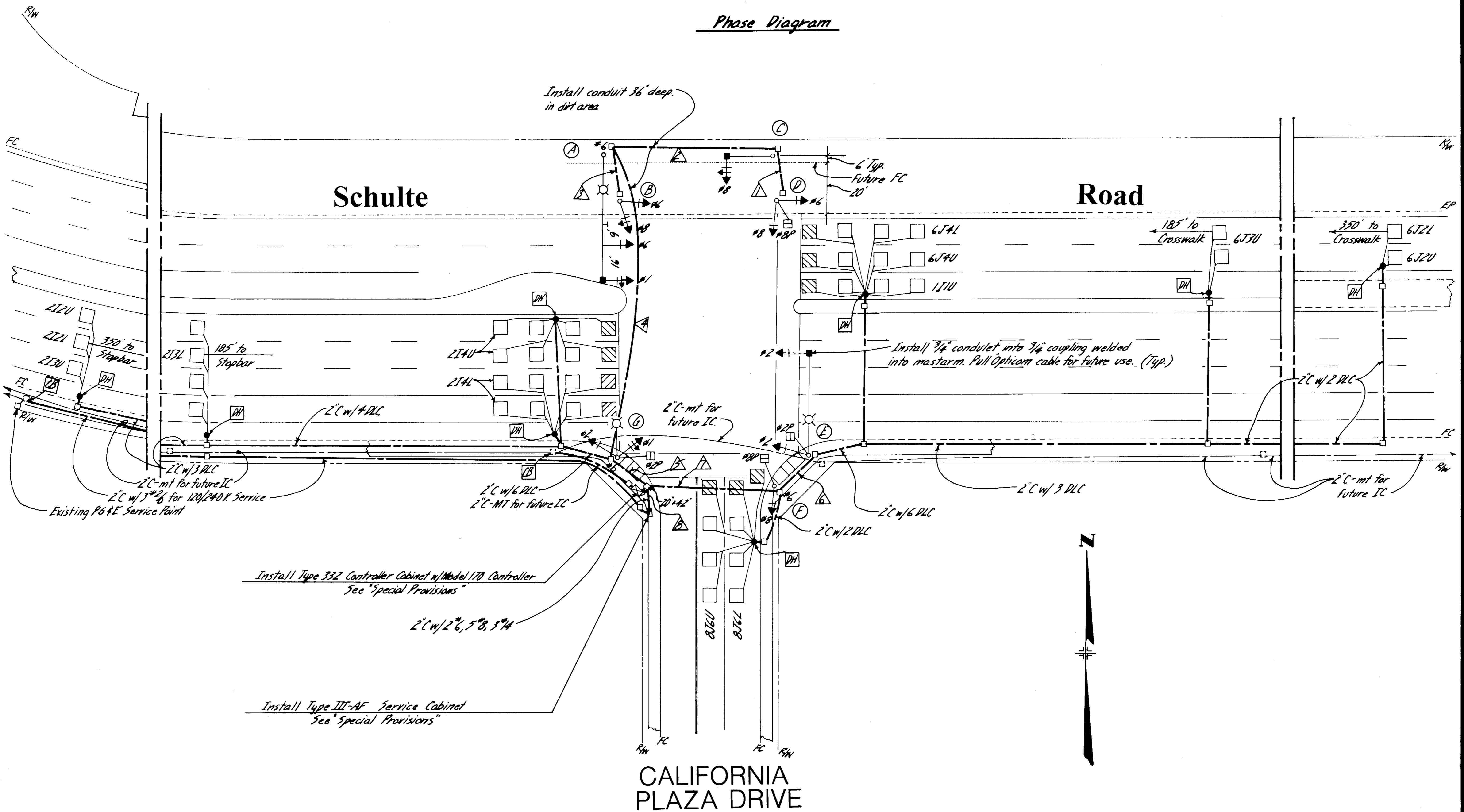
**STREET IMPROVEMENT PLANS**  
 TRAFFIC SIGNAL PLAN - SCHULTE AND CALIFORNIA PLAZA DRIVE  
 MS 94-45  
 FREEWAY SERVICE PHASE I  
 SAN JOAQUIN COUNTY, CALIFORNIA  
 FOR: KING & LYONS

DATE	BY	REVISIONS	DATE	BY	REVISIONS
8-1-95	PLANNERS	B.C.	8-1-95	PLANNERS	B.C.
8-11-95	PLANNERS	ENGR. CHECK	8-11-95	PLANNERS	ENGR. CHECK

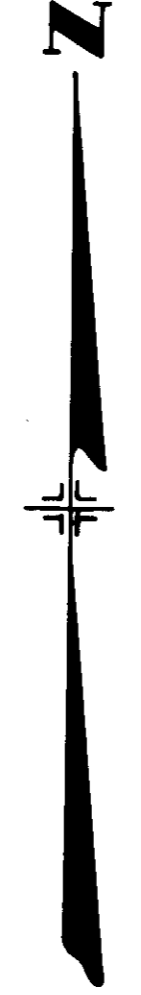
SHEET NO. **TS-1**  
 OF **2** SHEETS  
 JOB NO.  
 FILE NO.



Phase Diagram



CALIFORNIA PLAZA DRIVE



SU-2925