

SU 3082

MAINTENANCE HOLE		
Location	Maintenance Hole Quantity	Frame & Cover Quantity
ODELL AVENUE		
Sta. 4+12 Rt.	1 Ea.	1 Ea.
Sta. 7+52 Rt.	1 Ea.	1 Ea.
Sta. 11+52 Rt.	1 Ea.	1 Ea.
FAIRMONT AVE.		
Sta. 2+65 Rt.	1 Ea.	1 Ea.
Sta. 6+45 Rt.	1 Ea.	1 Ea.
Sta. 7+02 Rt.	1 Ea.	1 Ea.
Sta. 11+02 Rt.	1 Ea.	1 Ea.
HARRIS AVE.		
Sta. 15+02 Rt.	1 Ea.	1 Ea.
Sta. 18+22 Rt.	1 Ea.	1 Ea.
Sta. 21+22 Rt.	1 Ea.	1 Ea.
Sta. 23+82 Rt.	1 Ea.	1 Ea.
Sta. 27+82 Rt.	1 Ea.	1 Ea.
Sta. 31+60 Rt.	1 Ea.	1 Ea.
EL DORADO ST.		
Sta. 3+02 B.L.	1 Ea.	1 Ea.
Sta. 7+02 B.L.	1 Ea.	1 Ea.
Sta. 11+02 B.L.	1 Ea.	1 Ea.
Sta. 15+02 B.L.	1 Ea.	1 Ea.
Sta. 17+30 B.L.	1 Ea.	1 Ea.
Sta. 21+30 B.L.	1 Ea.	1 Ea.
Sta. 23+82 Rt.	1 Ea.	1 Ea.
Sta. 27+82 Rt.	1 Ea.	1 Ea.
Sta. 31+62 Rt.	1 Ea.	1 Ea.
TOTAL	22 EA.	22 EA.

SERVICE CLEANOUT	
Location	Quantity
ODELL AVENUE	19 EA.
FAIRMONT AVENUE	21 EA.
IVY AVENUE	4 EA.
HARRIS AVENUE	42 EA.
LOWELL AVENUE	5 EA.
EL DORADO STREET	26 EA.
TOTAL	117 EA.

ALTERNATIVE SEWER PIPE	
Designation	Allowable Pipe Material and Size
4" Dia. Alt Sewer Pipe	4" PVC
6" Dia. Alt. Sewer Pipe	6" PVC
8" Dia. Alt. Sewer Pipe	8" PVC

8" DIA. ALT. SEWER PIPE	
Location	Quantity
ODELL AVENUE	1,053 L.F.
FAIRMONT AVENUE	805 L.F.
IVY AVENUE	497 L.F.
HARRIS AVENUE	1,268 L.F.
LOWELL AVENUE	350 L.F.
EL DORADO STREET	1,428 L.F.
TOTAL	5,401 L.F.

6" DIA. ALT. SEWER PIPE	
Location	Quantity
ODELL AVENUE	145 L.F.
FAIRMONT AVENUE	400 L.F.
HARRIS AVENUE	390 L.F.
EL DORADO STREET	1,475 L.F.
TOTAL	2,410 L.F.

4" DIA. ALT. SEWER PIPE	
Location	Quantity
ODELL AVENUE	672 L.F.
FAIRMONT AVENUE	742 L.F.
IVY AVENUE	141 L.F.
HARRIS AVENUE	1,485 L.F.
LOWELL AVENUE	177 L.F.
EL DORADO STREET	919 L.F.
TOTAL	4,136 L.F.

LAMP HOLE		
Location	Lamp Hole Quantity	Frame & Cover Quantity
ODELL AVENUE Sta. 2+62 Rt.	1 Ea.	1 Ea.
EL DORADO ST. Sta. 22+80 Rt. Sta. 33+07 Rt.	1 Ea. 1 Ea.	1 Ea. 1 Ea.
TOTAL	3 EA.	3 EA.

DRIVEWAY (TYPE D)		
Location	No.	Quantity
ODELL AVENUE	35	280 S.Y.
HOWE AVENUE	25	200 S.Y.
FAIRMONT AVENUE	48	384 S.Y.
HARRIS AVENUE	33	264 S.Y.
IVY AVENUE	30	240 S.Y.
LOWELL AVENUE	18	63 S.Y.
TOTAL	189	1,512 S.Y.

ASPHALT CONCRETE (TYPE B)	
Location	Quantity
ROADWAY OVERLAY	2,467 Tons
DRIVEWAYS	204 Tons
TRENCH REPAIR	1,167 Tons
TOTAL	3,838 TONS

A.C. (MISC. AREAS) 0.30' TRENCH REPAIR			
Location	Mains	Laterals	Quantity
ODELL AVENUE	522	76	598 S.Y.
EL DORADO STREET	1,283	104	1,387 S.Y.
TOTAL			1,985 S.Y.

A.C. (MISC. AREAS) 0.50' TRENCH REPAIR			
Location	Mains	Laterals	Quantity
FAIRMONT AVE.	535	84	619 S.Y.
IVY AVENUE	214	16	230 S.Y.
HARRIS AVE.	732	168	900 S.Y.
LOWELL AVE.	146	20	166 S.Y.
TOTAL			1,915 S.Y.

ADJUST MAINTENANCE HOLE FRAME AND COVER	
Location	Quantity
ODELL AVENUE	
Sta. 14+92 Rt.	1 Ea.
Sta. 15+02 Rt.	1 Ea.
Sta. 19+90 Rt.	1 Ea.
Sta. 20+90 Rt.	1 Ea.
Sta. 23+82 Rt.	1 Ea.
Sta. 25+92 Rt.	1 Ea.
HOWE AVENUE	
Sta. 15+02 Rt.	1 Ea.
Sta. 17+90 Rt.	1 Ea.
Sta. 20+90 Rt.	1 Ea.
Sta. 23+82 Rt.	1 Ea.
Sta. 27+82 Rt.	1 Ea.
FAIRMONT AVENUE	
Sta. 7+19 Center	1 Ea.
Sta. 14+92 Center	1 Ea.
Sta. 15+02 Rt.	1 Ea.
Sta. 17+92 Rt.	1 Ea.
Sta. 20+87 Rt.	1 Ea.
Sta. 23+82 Rt.	1 Ea.
Sta. 26+82 Rt.	1 Ea.
Sta. 29+92 Rt.	1 Ea.
IVY AVENUE	
Sta. 6+10 Lt.	1 Ea.
Sta. 8+30 Lt.	1 Ea.
Sta. 8+40 Rt.	1 Ea.
Sta. 11+70 Lt.	1 Ea.
Sta. 17+15 Rt.*	1 Ea.
Sta. 20+83 Lt.	1 Ea.
LOWELL AVENUE	
Sta. 15+83 Rt.	1 Ea.
Sta. 20+83 Rt.	1 Ea.
Sta. 24+15 Rt.	1 Ea.
TOTAL	28 EA.

* Denotes Lamp Hole

SHOULDER BACKING	
Location	Quantity
ODELL AVENUE	121 Tons
HOWE AVENUE	62 Tons
FAIRMONT AVENUE	137 Tons
HARRIS AVENUE	80 Tons
IVY AVENUE	110 Tons
LOWELL AVENUE	63 Tons
TOTAL	573 TONS

**MOSSWOOD SEWER PROJECT
PHASE 2**

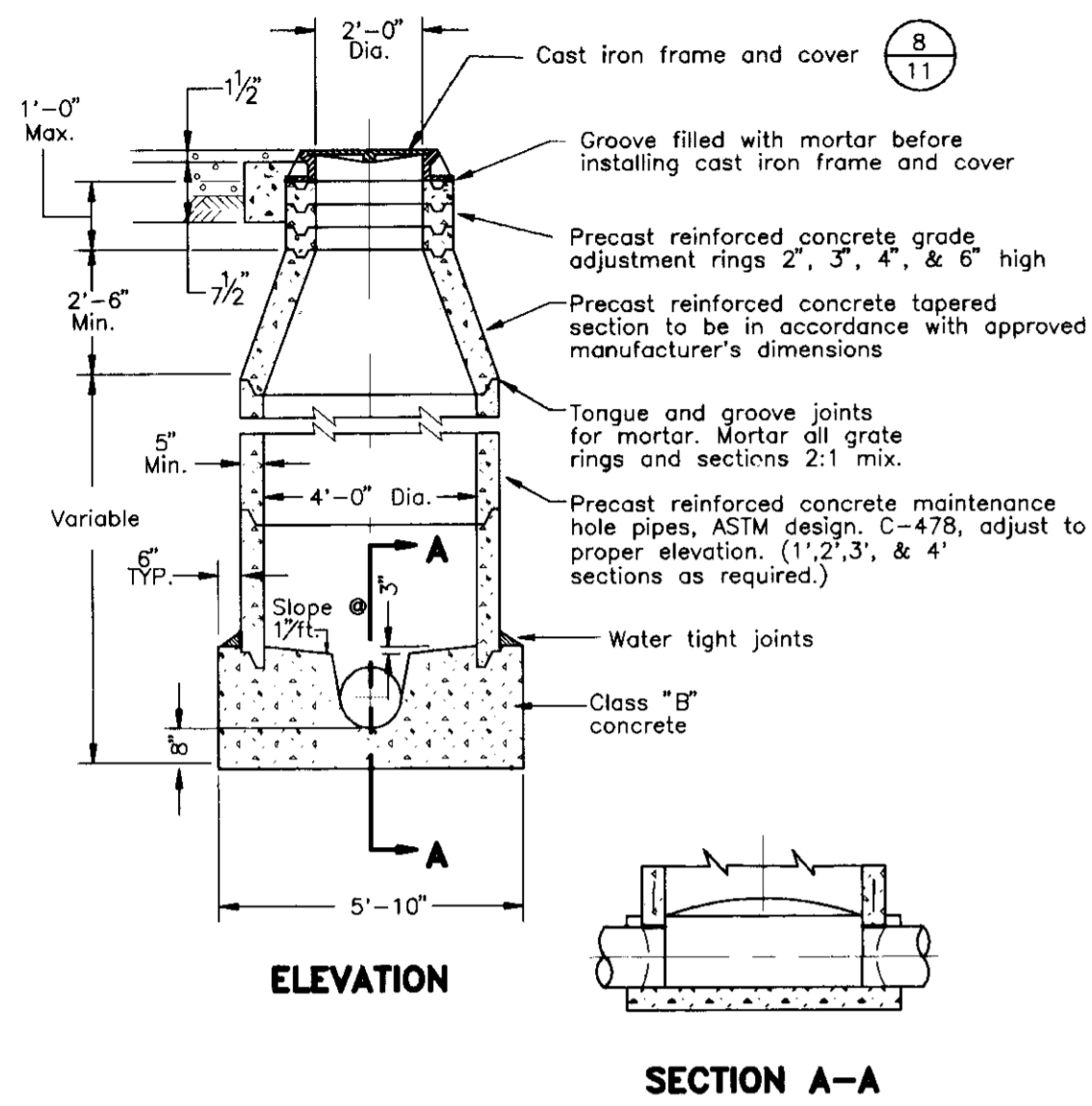
CONSTRUCTION NOTES

DEPARTMENT OF PUBLIC WORKS
CITY OF STOCKTON, CALIFORNIA

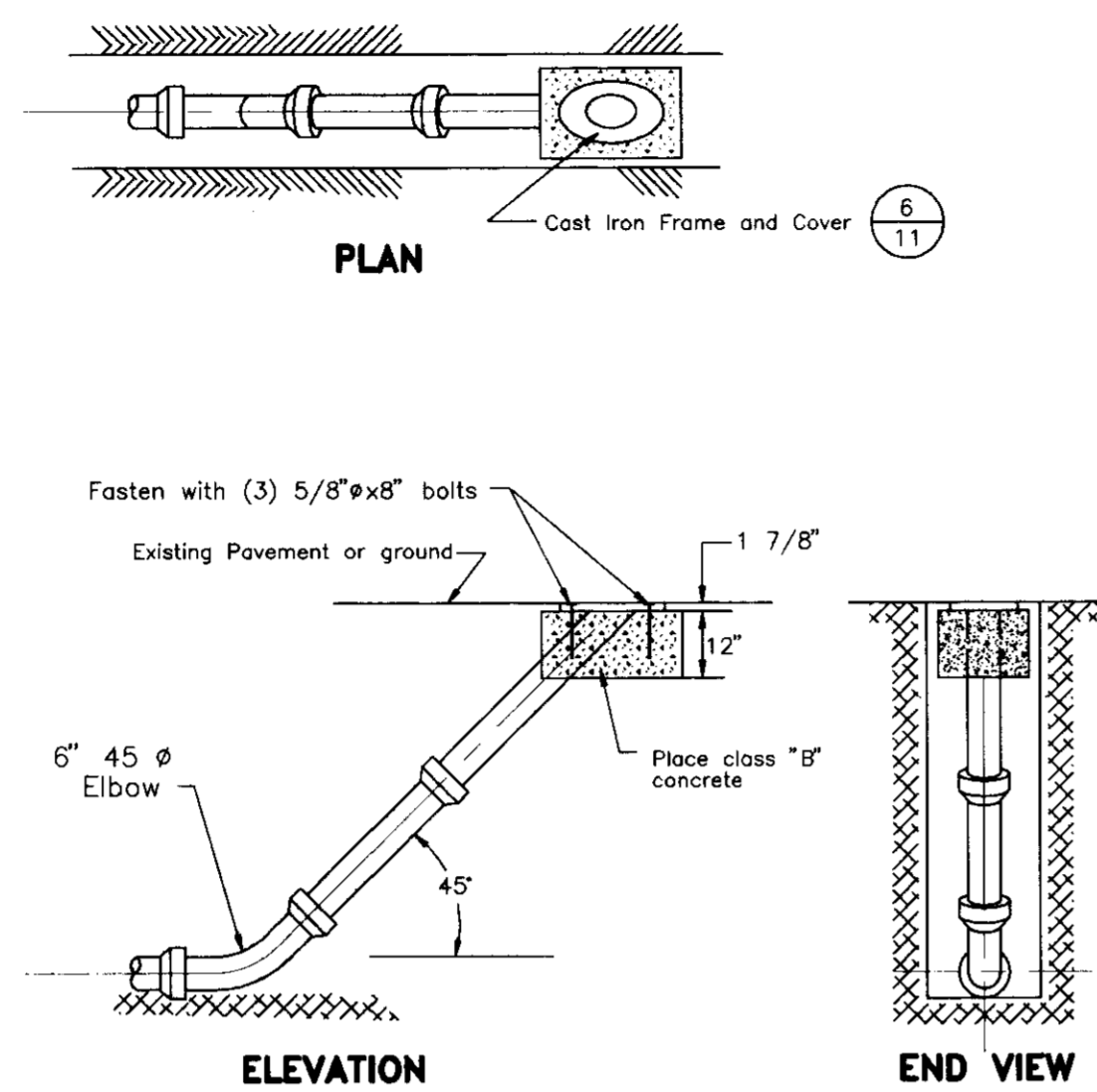
SCALE: NOTED	APPROVED BY: DATE: <i>12/22/95</i>	SHEET NO. 12
DESIGNED BY: D.G.		OF 12 SHEETS
DRAWN BY: Tony Refuerzo	<i>Paul M. Sanborn</i>	
CHECKED BY:	CITY ENGINEER	
RECORD DWG.:	STOCKTON, CALIF.	

DRAWN BY	DATE	PROJECT ENGINEER	DATE	CHECKED	DATE	SUBMITTED	DATE	APPROVED	DATE
Tony Refuerzo	6/21/95	<i>Dean & Gilman</i>	1-2-96	Tony Refuerzo	1/3/96	<i>Manuel Dela</i>	1/9/96	<i>ML</i>	1/14/96

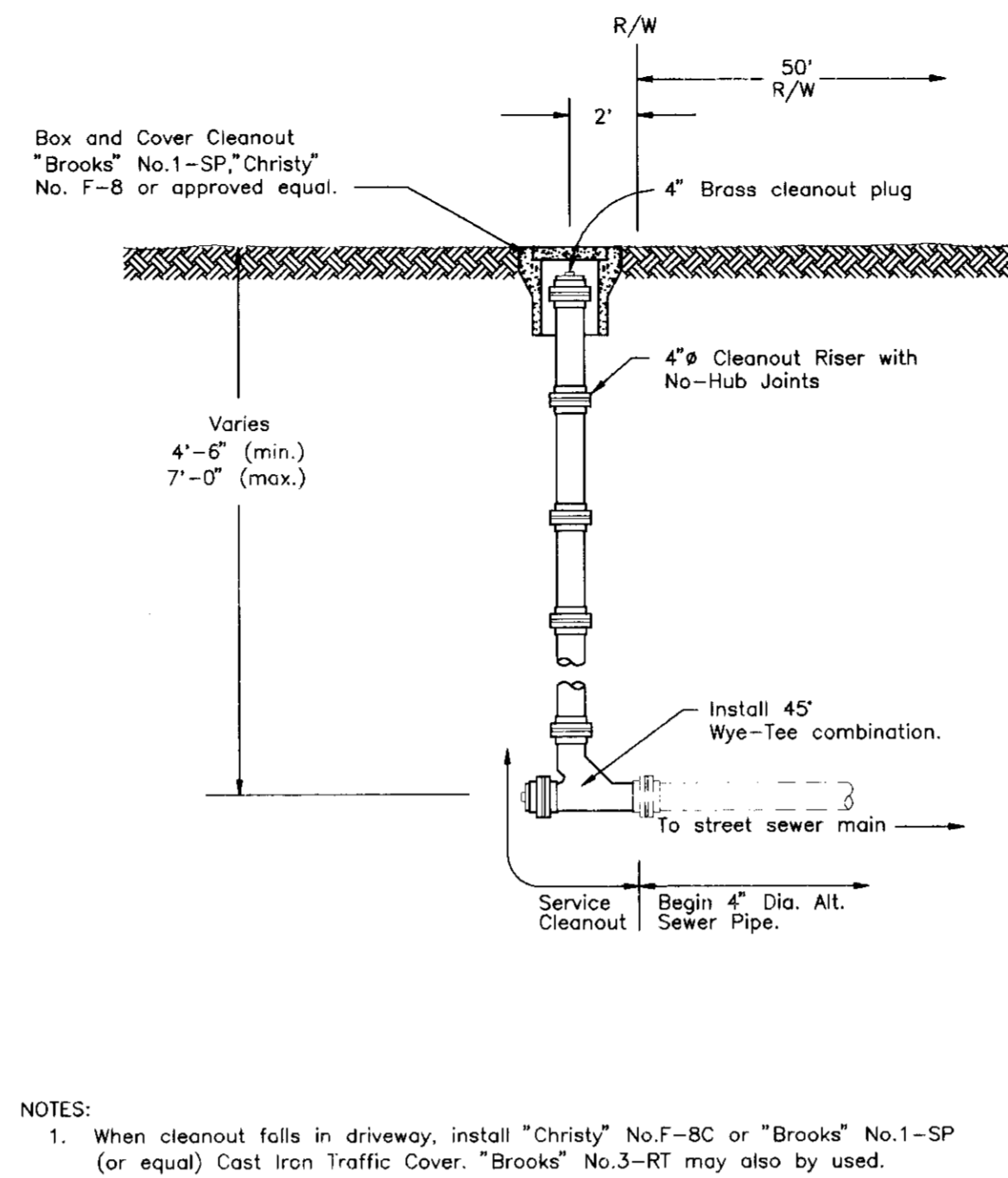
COUNTY OF SAN JOAQUIN **SCALE: NONE**



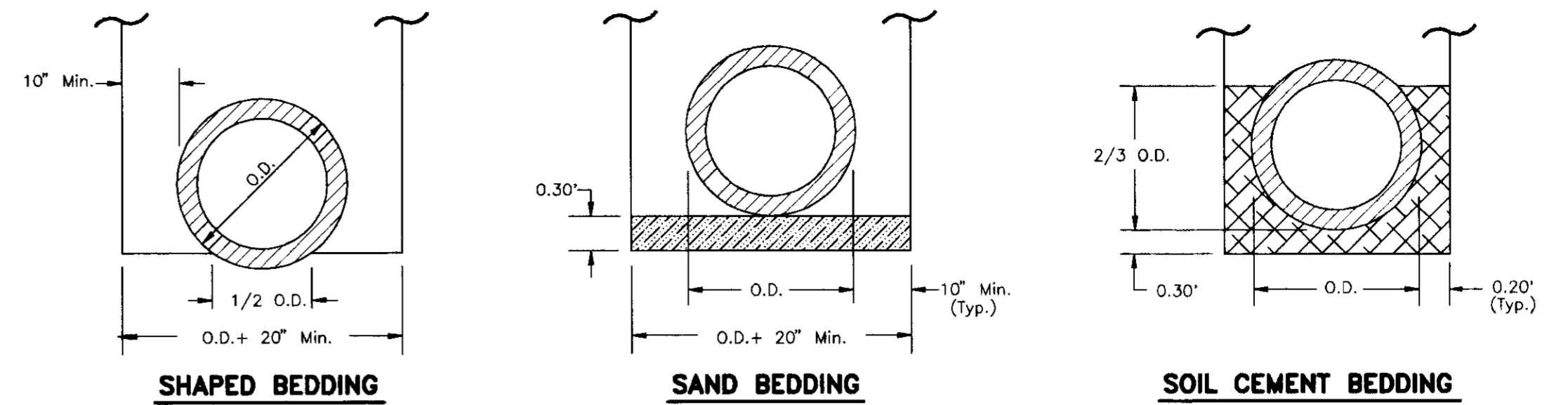
MAINTENANCE HOLE (M.H.) (Refer to C.O.S. Std. Dwg. No. 55) **7** **11**



LAMP HOLE (L.H.) (Refer to C.O.S. Std., Dwg. No. 58) **5** **11**

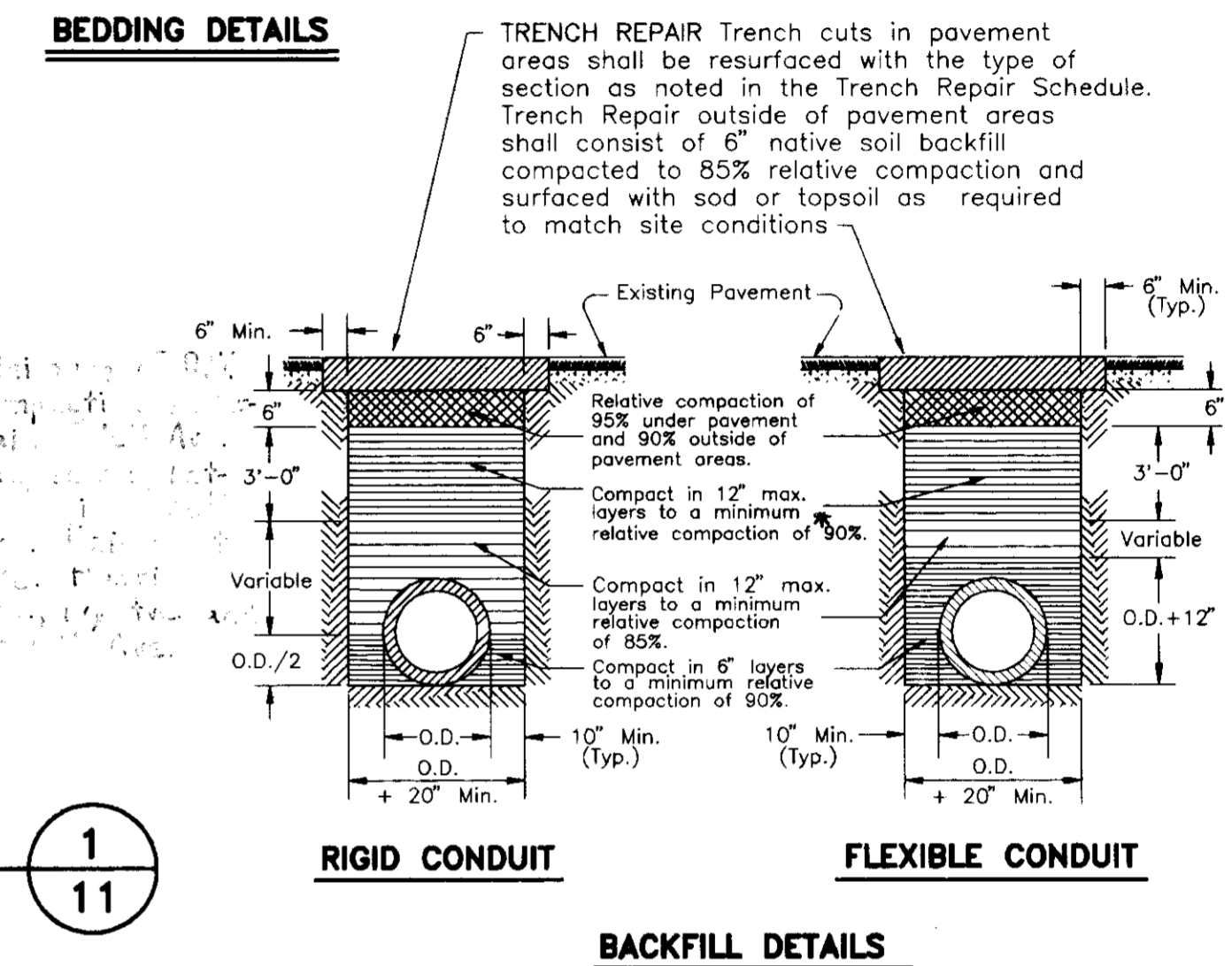


SERVICE CLEANOUT DETAIL (Refer to C.O.S. Std. Dwg. No. 64) **3** **11**

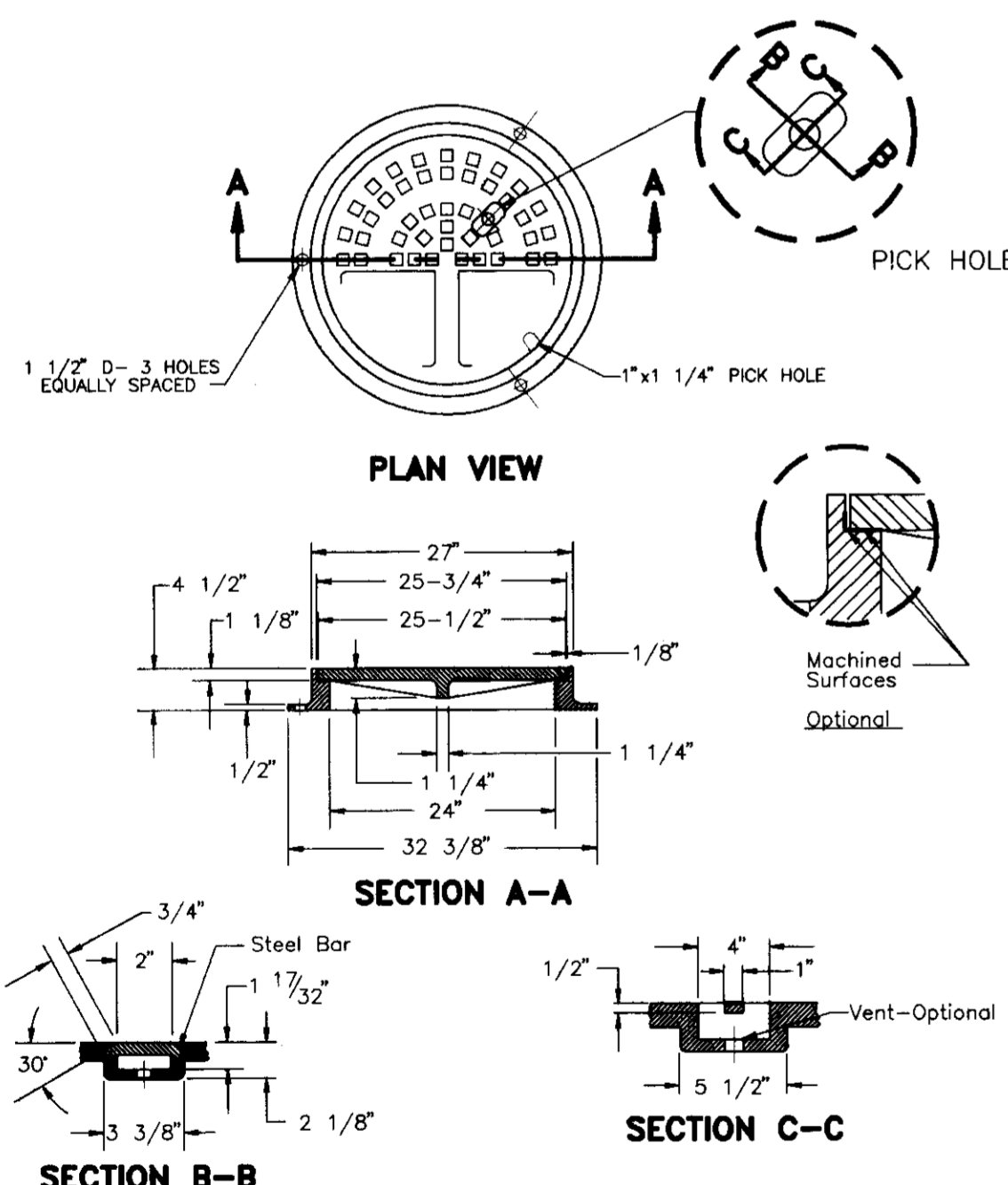


- NOTES:**
- Relative compaction of materials shall be tested in accordance with the State of California Dept. of Transportation, Testing Manuals, test method No. California 216 or 231.
 - All existing pavement shall be neatly cut to line prior to trench excavation. The Contractor may use wheel- or knife-type or similar equipment that will produce a neat line cut except that all cuts within the limits of El Dorado Street shall be required to be saw cut.
 - Maximum payment width for A.C. Misc. Areas - Trench Repair shall be the outside pipe diameter plus 3 feet.
 - New pavement within the limits of El Dorado Street shall be 1/8" higher than adjacent pavement. Apply fog seal coat of SS-1 asphalt emulsion.

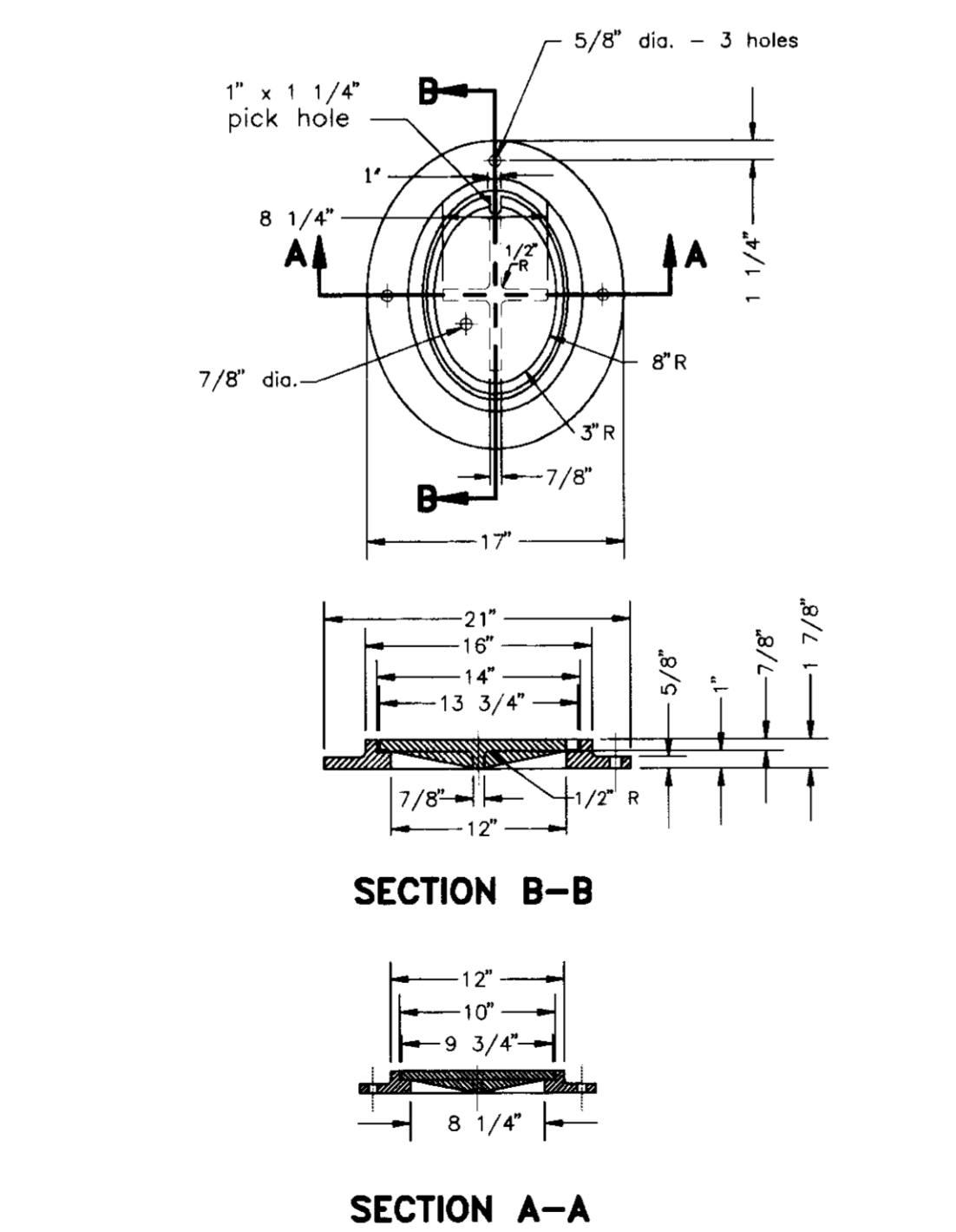
TYPICAL TRENCH BACKFILL **1** **11**



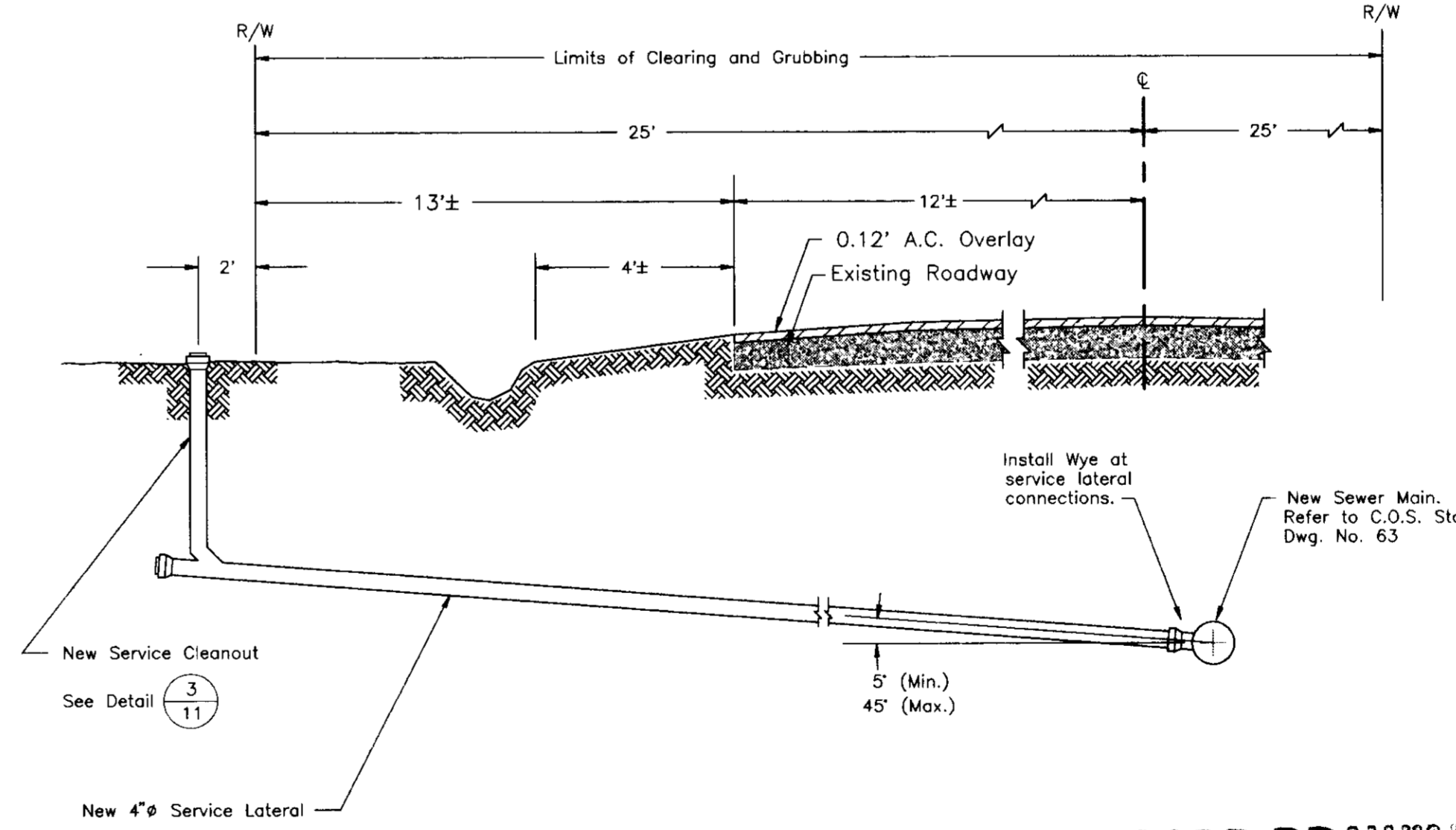
BACKFILL DETAILS



FRAME & COVER (M.H.) (Refer to C.O.S. Std. Dwg. No. 54) **8** **11**



FRAME & COVER (L.H.) (Refer to C.O.S. Std. Dwg. No. 59) **6** **11**



TYPICAL SERVICE LATERAL (Refer to C.O.S. Std., Dwg. No. 63) **4** **11**

LOCATION	STRUCTURAL SECTION
FAIRMONT AVE. IVY AVE. HARRIS AVE. LOWELL AVE.	Trench Repair (0.50') 0.50' A.C. Paving 0.50' at 95% Relative Compaction
OUEL AVE. EL DORADO ST.	Trench Repair (0.30') 0.30' A.C. Paving 2.00' Class II Agg. Base at 95% Relative Compaction or 2.00' Controlled Density Fill (CDF) 0.50' at 95% Relative Compaction

TRENCH RESURFACING SCHEDULE **2** **11**

MOSSWOOD SEWER PROJECT PHASE 2 CONSTRUCTION DETAILS

DEPARTMENT OF PUBLIC WORKS
CITY OF STOCKTON, CALIFORNIA

SCALE: NOTED	APPROVED BY: DATE: <i>7/24/95</i>	SHEET NO. 11
DESIGNED BY: D.G.	CITY ENGINEER	OF 12 SHEETS
DRAWN BY: Tony Refuerzo	STOCKTON, CALIF.	
CHECKED BY:		
RECORD DWG.:		

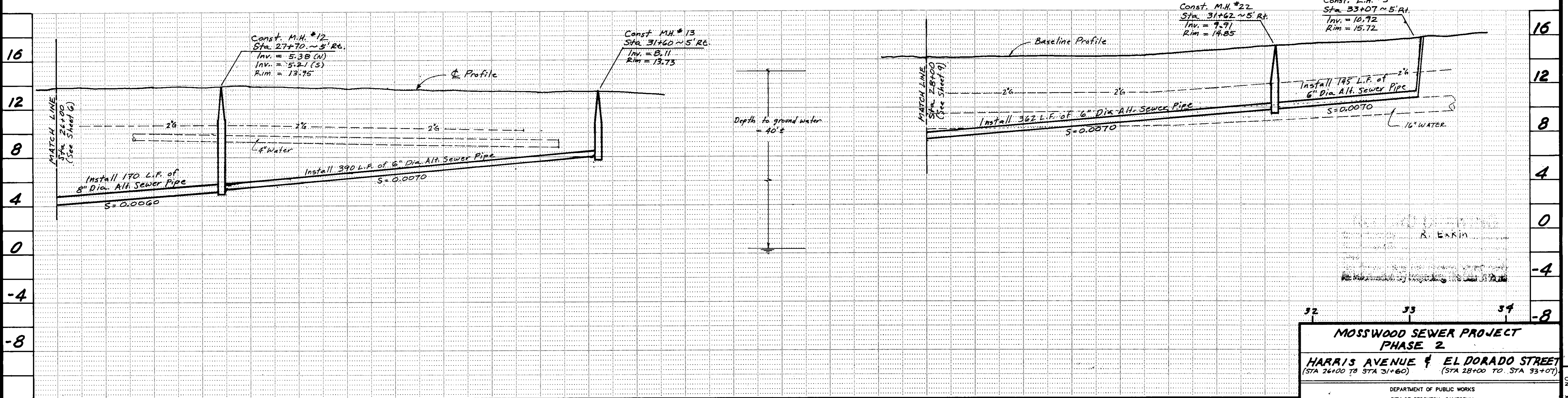
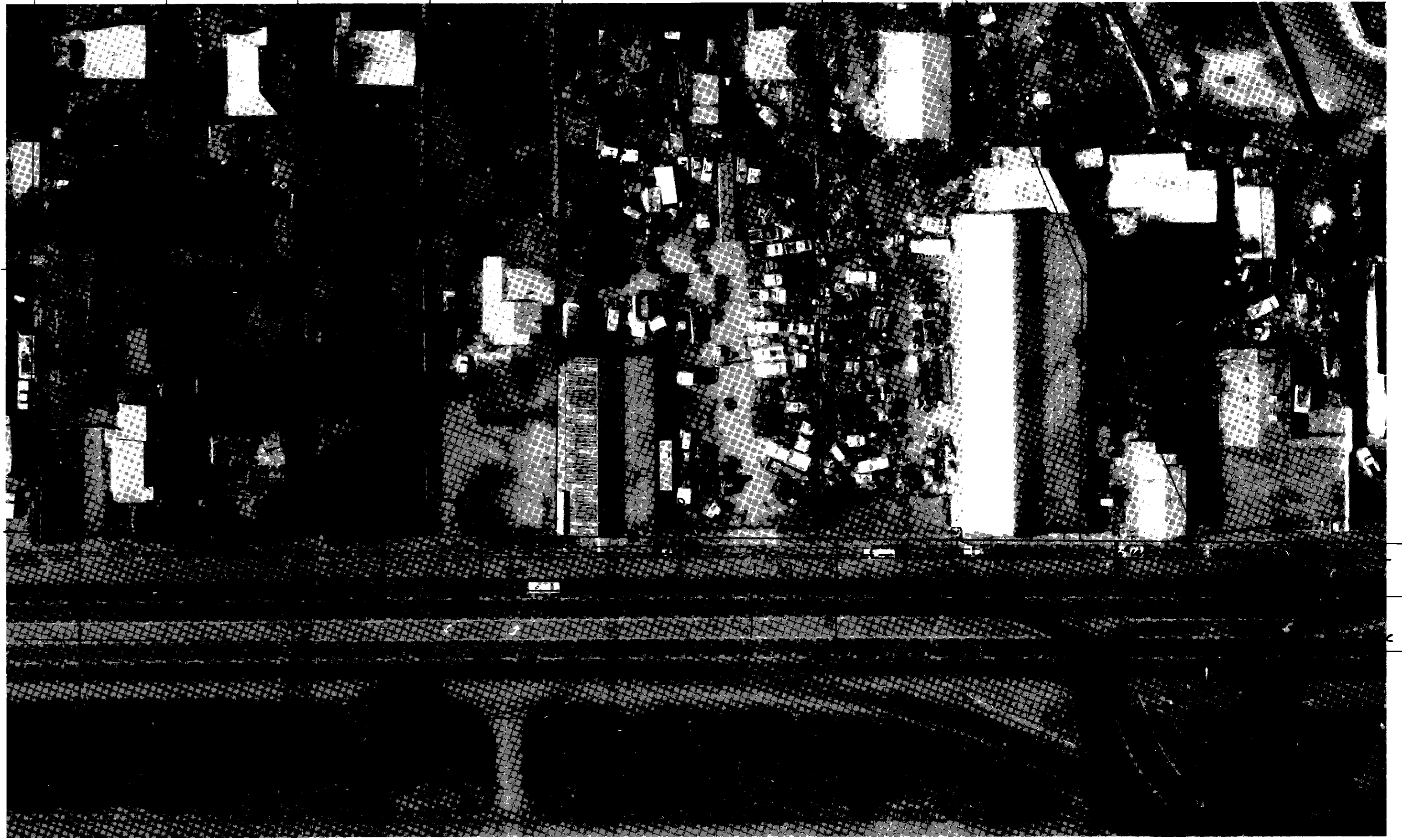
SU 3083

REVISIONS	DATE	DESCRIPTION

DRAWN BY	DATE	PROJECT ENGINEER	DATE	CHECKED	DATE	SUBMITTED	DATE	APPROVED	DATE
Tony Refuerzo	6/2/95	Don Silban	1-2-96	Tony Refuerzo	1/3/96	Manuel Dela	1/2/96		1/4/96

COUNTY OF SAN JOAQUIN SCALE: NONE

3872.10C



**MOSSWOOD SEWER PROJECT
PHASE 2**
HARRIS AVENUE & EL DORADO STREET
(STA 26+00 TO STA 31+60) (STA 28+00 TO STA 33+07)

DEPARTMENT OF PUBLIC WORKS
CITY OF STOCKTON, CALIFORNIA

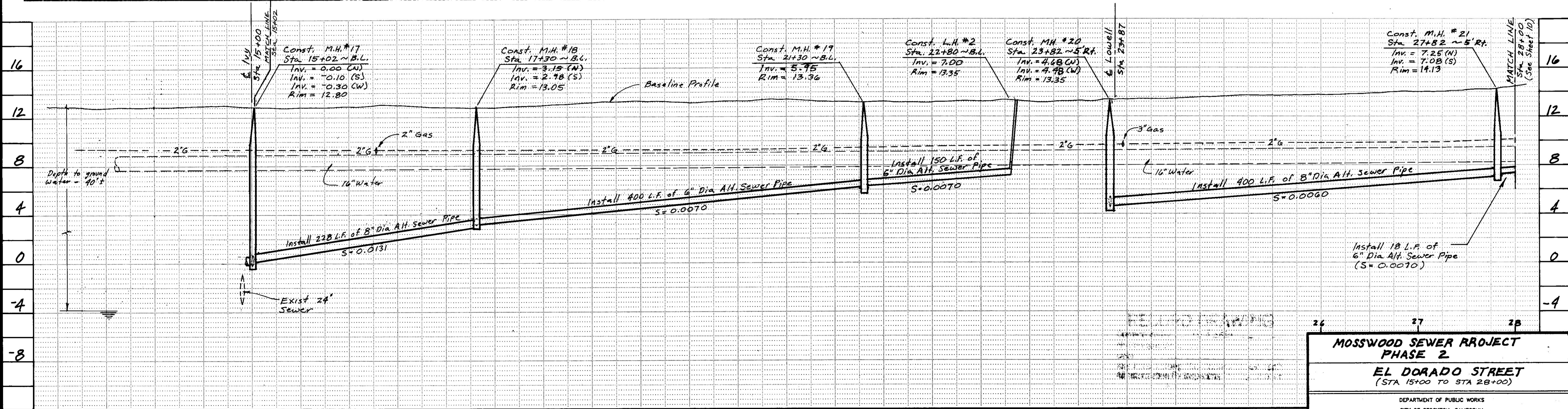
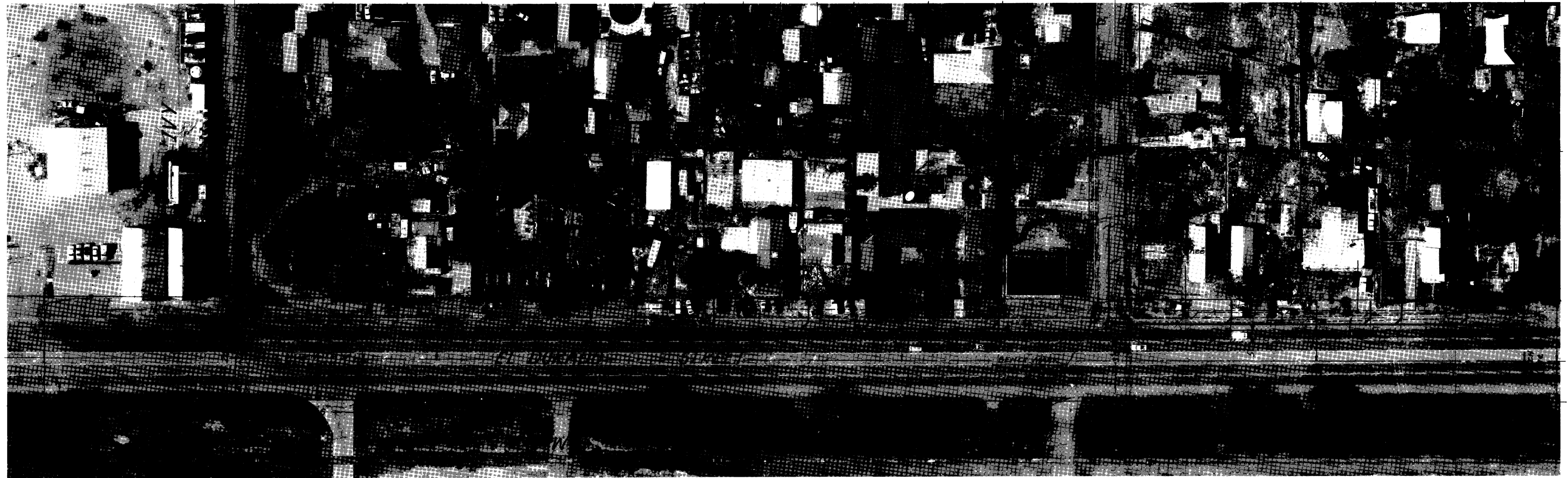
SCALE: AS NOTED
DESIGNED BY: DG
DRAWN BY: DG
CHECKED BY: [Signature]
RECORD DWG.:

APPROVED BY: [Signature] DATE: 1/22/15
CITY ENGINEER
STOCKTON, CALIF.

SHEET NO. 10
OF 12 SHEETS
PROJECT NO.

Cu. Yds.	Exc. Emb.	27	28	29	30	31	32	28	29	30	31	PROJECT
DRAWN BY		DATE	PROJECT ENGINEER	DATE	CHECKED	DATE	SUBMITTED	DATE	APPROVED	DATE	COUNTY OF SAN JOAQUIN	
FILE NAME		DRAWER	SHEET NO.	Dean S. Gilman	Tony Refugio	1/3/16	Manuel Adas	1/21/16	[Signature]	1/14/16	PLAN SCALE 1" = 50'	PROFILE HORIZONTAL SCALE 1" = 50'
				1-2-76		1/3/16		1/21/16		1/14/16	SCALE VERTICAL 1" = 4'	PROJECT

SU 3084



**MOSSWOOD SEWER PROJECT
PHASE 2
EL DORADO STREET
(STA 15+00 TO STA 28+00)**

DEPARTMENT OF PUBLIC WORKS
CITY OF STOCKTON, CALIFORNIA

SCALE: AS NOTED
DESIGNED BY: DG
DRAWN BY:
CHECKED BY:
RECORD DWG.:

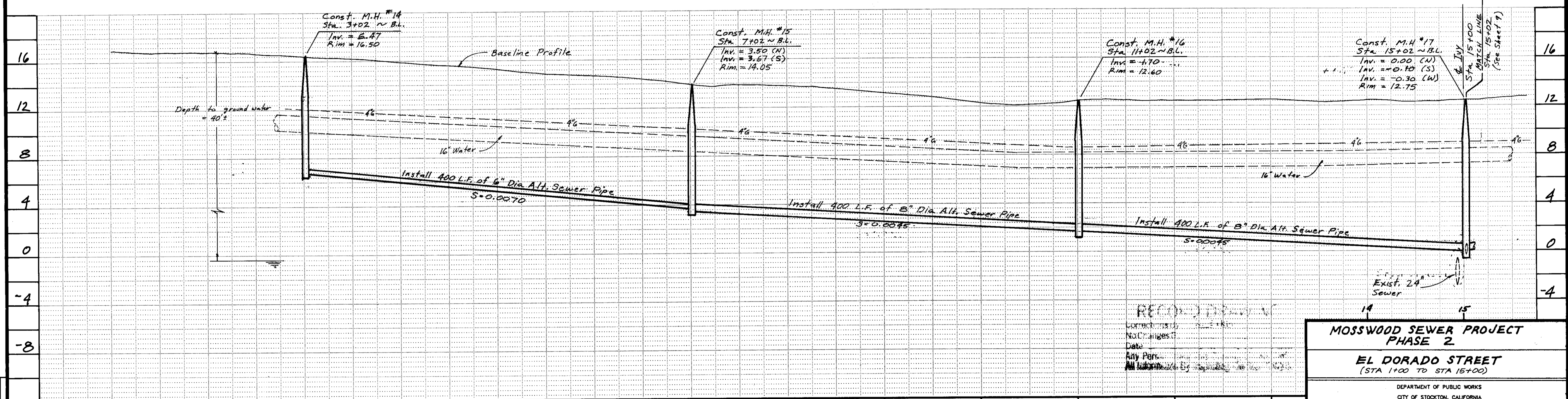
APPROVED BY: DATE: *[Signature]*
CITY ENGINEER
STOCKTON, CALIF.

SHEET NO. 9
OF 12 SHEETS
PROJECT NO.

Cu. Yds.	Exc. Emb.	13	14	15	16	17	18	19	20	21	22	23	24	25
DRAWN BY		DATE	PROJECT ENGINEER	DATE	CHECKED	DATE	SUBMITTED	DATE	APPROVED	DATE	PLAN SCALE 1" = 50'		PROFILE HORIZONTAL 1" = 50'	
FILE NAME		DRAWER	SHEET NO.	COUNTY OF SAN JOAQUIN		SCALE VERTICAL 1" = 4'		PROJECT		3872.8C				

SU 3085

BRIDGE FILE INDEX NO.



Cu. Yds. Exc.	Cu. Yds. Emb.	1	2	3	4	5	6	7	8	9	10	11	12	13
1	1	1	1	1	1	1	1	1	1	1	1	1	1	1

DRAWN BY	DATE	PROJECT ENGINEER	DATE	CHECKED	DATE	SUBMITTED	DATE	APPROVED	DATE
		Dean J. Gilman	1-2-76	Tony Refuerzo	1/3/76	Manuel Inacio	1/3/76	<i>[Signature]</i>	1/4/76

FILE NAME	DRAWER	SHEET NO.

COUNTY OF SAN JOAQUIN	PLAN SCALE 1" = 50'	PROFILE HORIZONTAL 1" = 50'	SCALE VERTICAL 1" = 4'	PROJECT
-----------------------	---------------------	-----------------------------	------------------------	---------

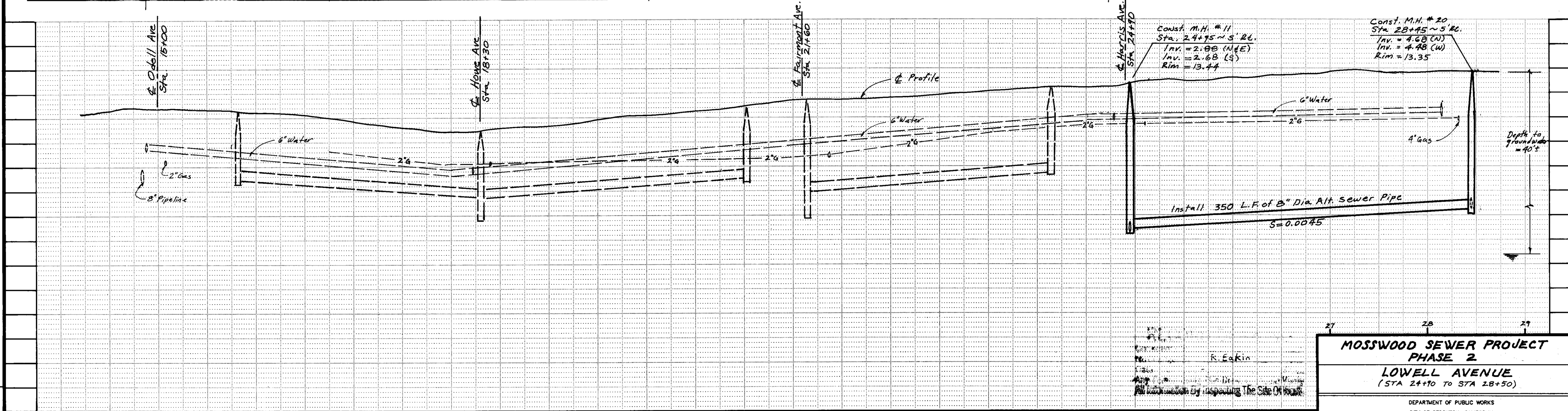
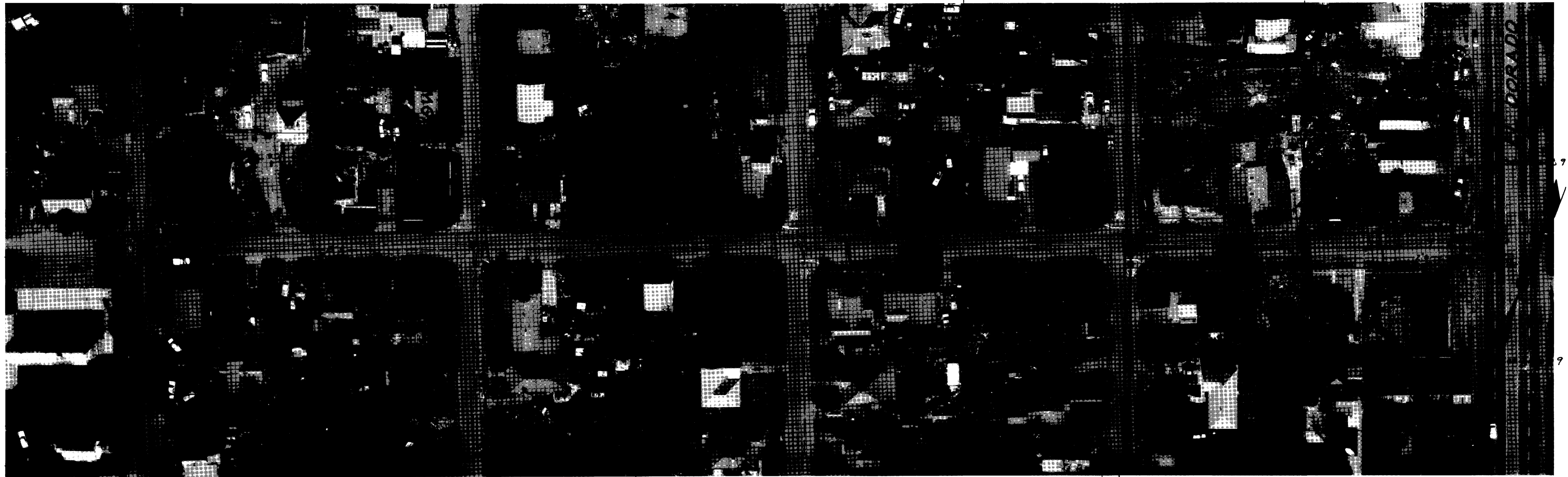
SCALE: AS NOTED	DESIGNED BY: DG	APPROVED BY: DATE: <i>[Signature]</i> 1/22/76	SHEET NO. 8
DRAWN BY:	CHECKED BY:	RECORD DWG.:	PROJECT NO.

**MOSSWOOD SEWER PROJECT
PHASE 2**

**EL DORADO STREET
(STA 1+00 TO STA 15+00)**

DEPARTMENT OF PUBLIC WORKS
CITY OF STOCKTON, CALIFORNIA

SU 30810



**MOSSWOOD SEWER PROJECT
PHASE 2
LOWELL AVENUE
(STA 24+10 TO STA 28+50)**

DEPARTMENT OF PUBLIC WORKS
CITY OF STOCKTON, CALIFORNIA

SCALE: AS NOTED
DESIGNED BY: DG
DRAWN BY:
CHECKED BY:
RECORD DWG.:

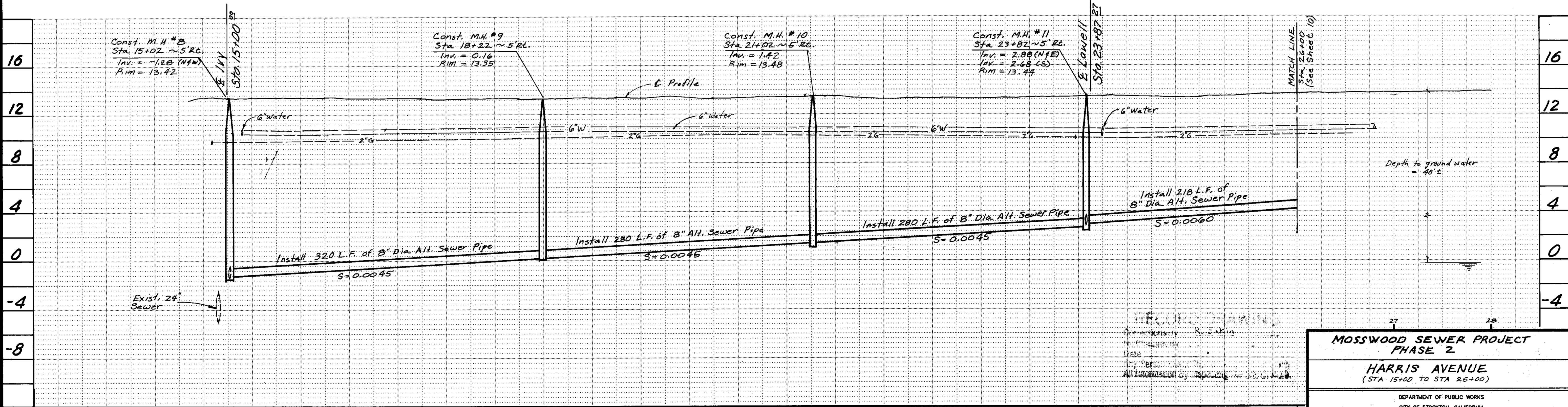
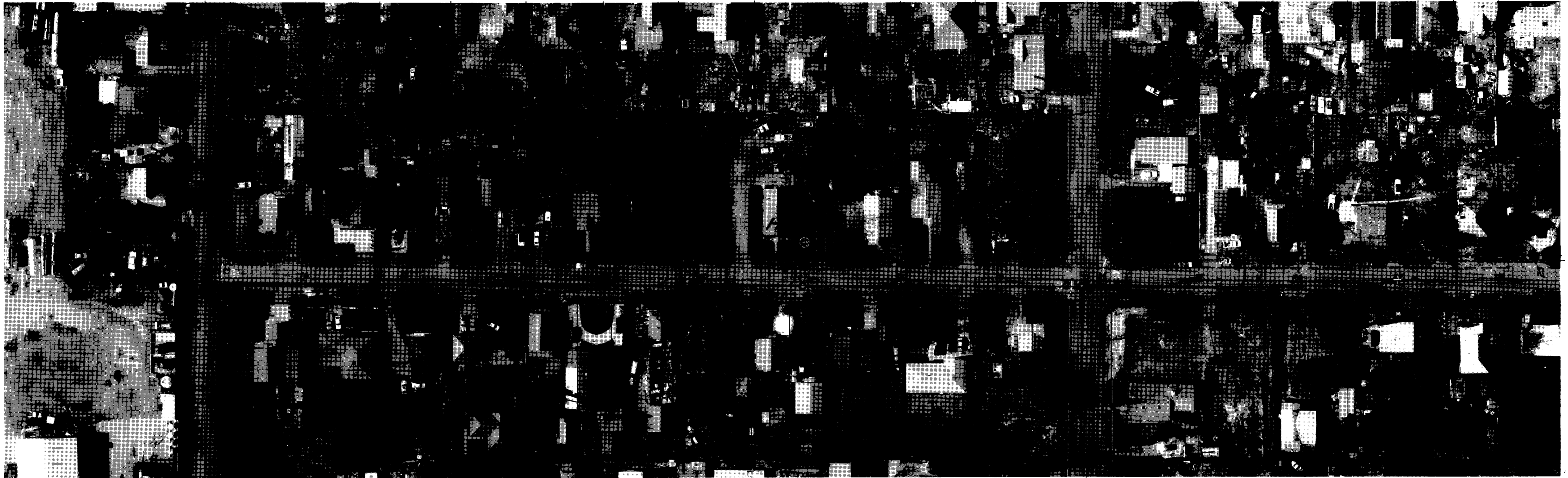
APPROVED BY: DATE: 1/24/15
CITY ENGINEER
STOCKTON, CALIF.

SHEET NO. 7
OF 12 SHEETS
PROJECT NO.

Cu. Yds.	Exc. Emb.	15	16	17	18	19	20	21	22	23	24	25	26
DRAWN BY		DATE	PROJECT ENGINEER	DATE	CHECKED	DATE	SUBMITTED	DATE	APPROVED	DATE	COUNTY OF SAN JOAQUIN		
FILE NAME		DRAWER	SHEET NO		PLAN SCALE 1" = 50'			PROFILE HORIZONTAL SCALE 1" = 50'			SCALE VERTICAL 1" = 4'		
PROJECT		PROJECT NO.			PROJECT			PROJECT			PROJECT		

SU 3087

BRIDGE FILE INDEX NO.



**MOSSWOOD SEWER PROJECT
PHASE 2**

HARRIS AVENUE
(STA 15+00 TO STA 26+00)

DEPARTMENT OF PUBLIC WORKS
CITY OF STOCKTON, CALIFORNIA

SCALE: AS NOTED
DESIGNED BY: Dg
DRAWN BY: Dg
CHECKED BY: [Signature]
RECORD DWG.: [Signature]

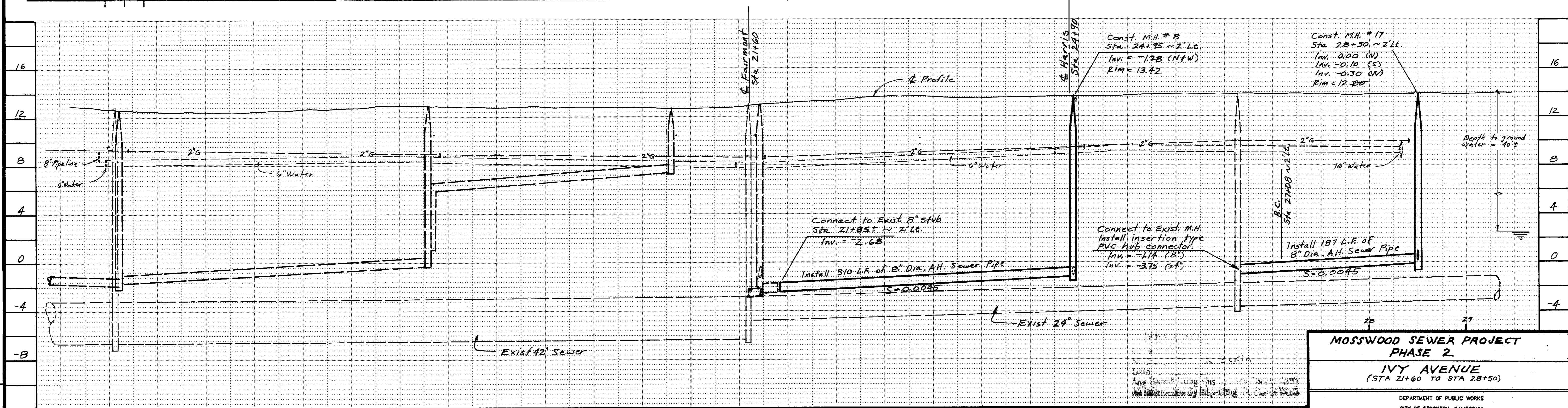
APPROVED BY: [Signature] DATE: 1/13/06

SHEET NO. 6
OF 12 SHEETS
PROJECT NO. [Blank]

Cu. Yds.	Exc. Emb.	15	16	17	18	19	20	21	22	23	24	25	26				
DRAWN BY: [Signature]		DATE: 1-2-06	CHECKED: Tony Refugio	DATE: 1/3/06	SUBMITTED: Manuel Salas	DATE: 1/10/06	APPROVED: [Signature]	DATE: 1/11/06	COUNTY OF SAN JOAQUIN					PLAN SCALE 1"=50'	PROFILE HORIZONTAL 1"=50'	SCALE VERTICAL 1"=4'	PROJECT
FILE NAME	DRAWER	SHEET NO.															

SY 3088

BRIDGE FILE INDEX NO.



**MOSSWOOD SEWER PROJECT
PHASE 2**

IVY AVENUE
(STA 21+60 TO STA 28+50)

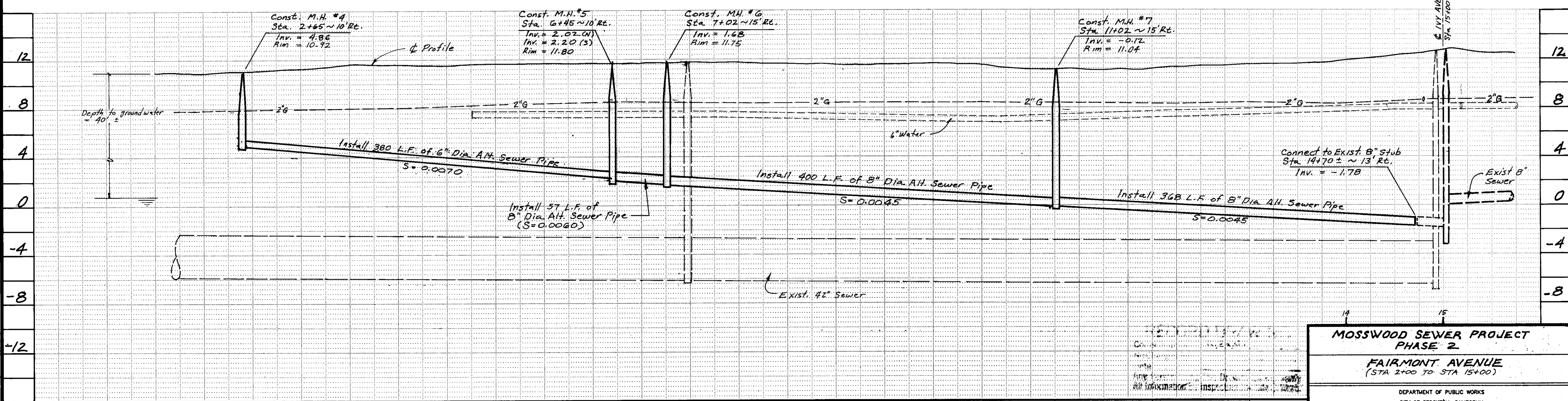
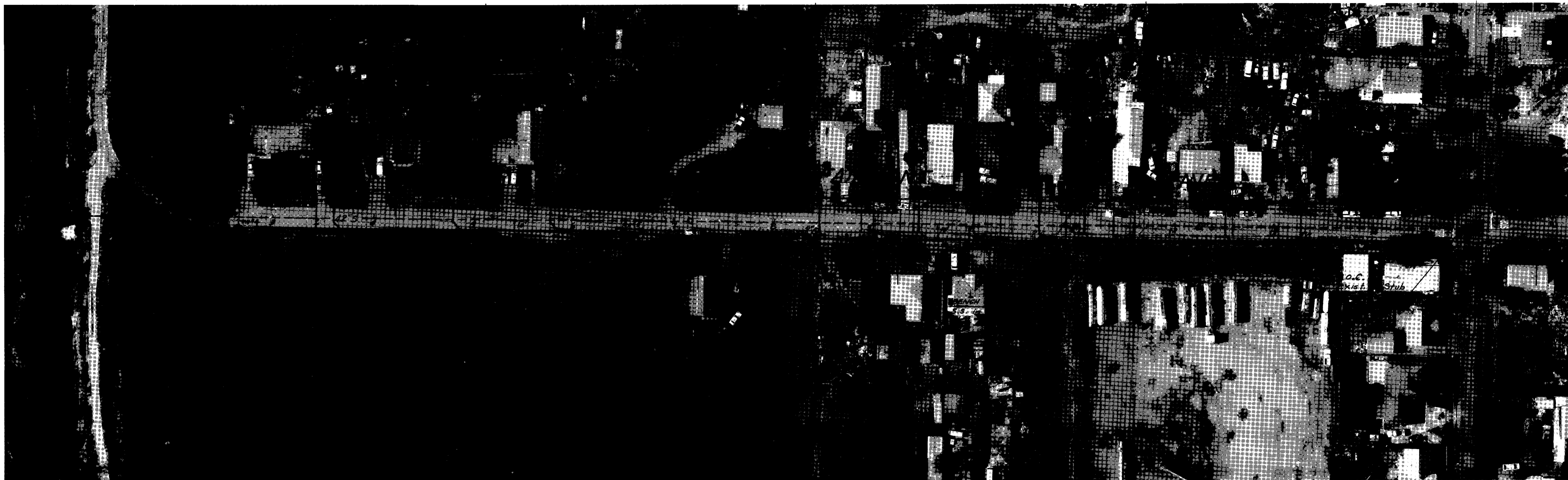
DEPARTMENT OF PUBLIC WORKS
CITY OF STOCKTON, CALIFORNIA

SCALE: AS NOTED	APPROVED BY: <i>[Signature]</i> DATE: 1/24/96	SHEET NO. 5
DESIGNED BY: DG	<i>[Signature]</i> CITY ENGINEER STOCKTON, CALIF.	OF 12 SHEETS
DRAWN BY: DJS		PROJECT NO.
CHECKED BY:		
RECORD DWG.:		

Cu. Yds.	Exc. Emb.	16	16	17	18	19	20	21	22	23	24	25	26	27				
DRAWN BY DATE		PROJECT ENGINEER DATE		CHECKED DATE		SUBMITTED DATE		APPROVED DATE		COUNTY OF SAN JOAQUIN					PLAN SCALE 1" = 50'	PROFILE HORIZONTAL SCALE 1" = 50'	VERTICAL SCALE 1" = 4'	PROJECT
		<i>Kevin A. Wilson</i> 1-2-96		<i>Tony Refuerzo</i> 1/3/96		<i>Manuel Delgado</i> 1/3/96		<i>[Signature]</i> 1/16/96										
FILE NAME	DRAWER	SHEET NO.																

SU 3089

BRIDGE FILE INDEX NO.



**MOSSWOOD SEWER PROJECT
PHASE 2**

FAIRMONT AVENUE
(STA 2+00 TO STA 15+00)

DEPARTMENT OF PUBLIC WORKS
CITY OF STOCKTON, CALIFORNIA

SCALE: AS NOTED
DESIGNED BY: *pa*
DRAWN BY: *pa*
CHECKED BY: *Hand M. Sausbaugh*
RECORD DWG.:

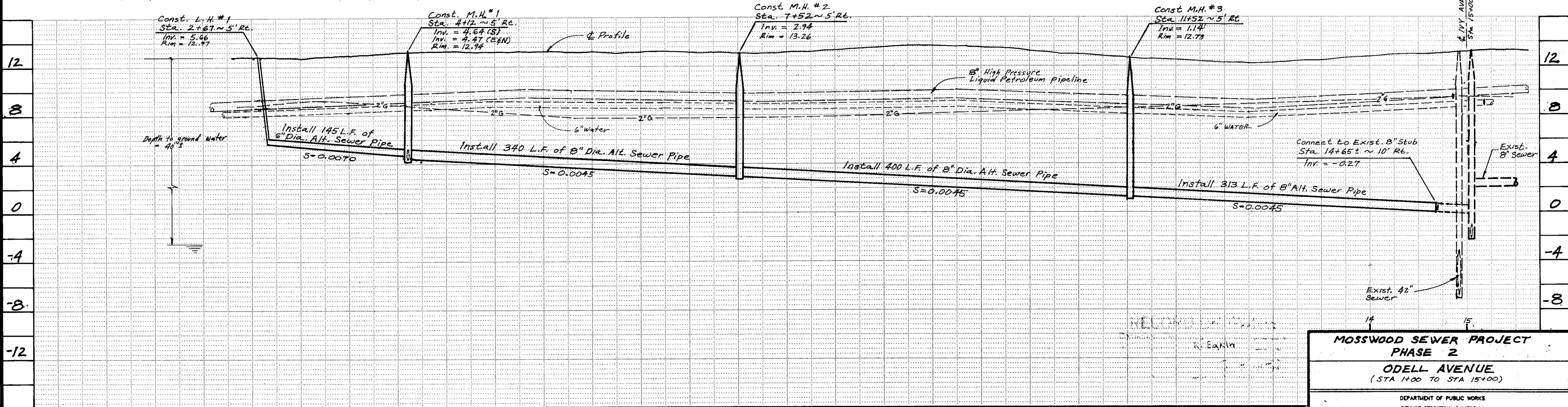
APPROVED BY: *Hand M. Sausbaugh* DATE: *1/13/96*

CITY ENGINEER
STOCKTON, CALIF.

SHEET NO. 4
OF 12 SHEETS
PROJECT NO. 3872.3C

Cu. Yds.	Exc. Emb.	2	3	4	5	6	7	8	9	10	11	12	13
DRAWN BY	DATE	PROJECT ENGINEER	DATE	CHECKED	DATE	SUBMITTED	DATE	APPROVED	DATE	COUNTY OF SAN JOAQUIN			
		<i>Dean S. Wilson</i>	<i>1-2-96</i>	<i>Tony Refierzo</i>	<i>1/3/96</i>	<i>Manuel Hwan</i>	<i>1/9/96</i>	<i>M.R.</i>	<i>1/4/96</i>	PLAN SCALE	1" = 50'	PROFILE HORIZONTAL	1" = 50'
FILE NAME	DRAWER	SHEET NO.		SCALE VERTICAL		1" = 4'		PROJECT					

SY309D



**MOSSWOOD SEWER PROJECT
PHASE 2
ODELL AVENUE
(STA 1400 TO STA 15+00)**

DEPARTMENT OF PUBLIC WORKS
CITY OF STOCKTON, CALIFORNIA

SCALE: AS NOTED
DESIGNED BY: dg
DRAWN BY:
CHECKED BY:
RECORD DWG.:

APPROVED BY: DATE: *[Signature]*
CITY ENGINEER
STOCKTON, CALIF.

SHEET NO. 3
OF 12 SHEETS
PROJECT NO.

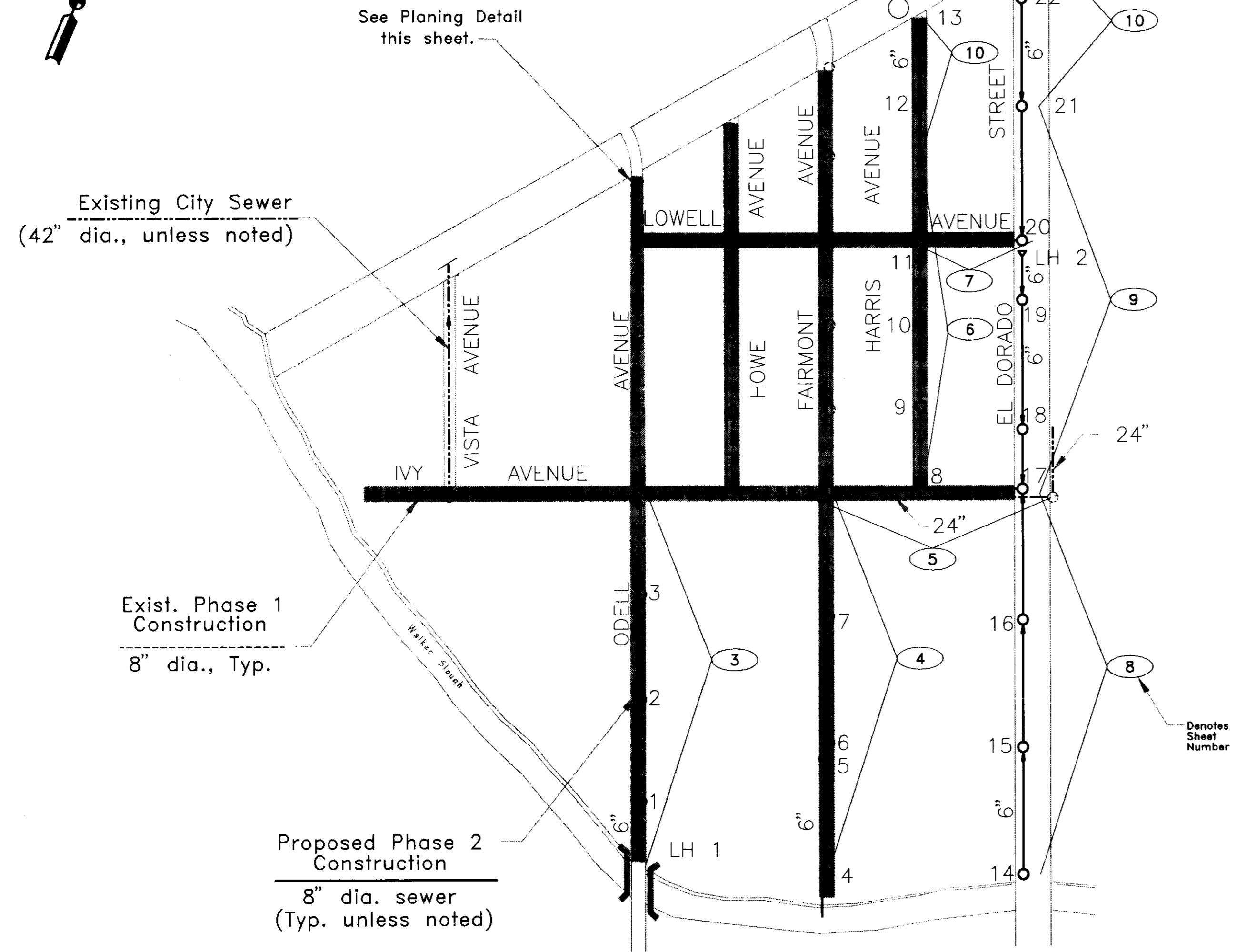
Cu. Yds.	Exc.	Emb.	1	2	3	4	5	6	7	8	9	10	11	12	13				
DRAWN BY DATE			PROJECT ENGINEER DATE		CHECKED DATE		SUBMITTED DATE		APPROVED DATE		COUNTY OF SAN JOAQUIN					PLAN SCALE 1"=50'	PROFILE HORIZONTAL SCALE 1"=50'	VERTICAL SCALE 1"=4'	PROJECT
FILE NAME			DRAWER		SHEET NO.														

SU 3091



GENERAL NOTES

- All elevations are U.S.G.S. datum.
- The locations of the existing underground utilities are plotted from records obtained from the utility companies. The County and City shall not be responsible for the accuracy of such records and does not guarantee that the underground facilities are as shown. It is the Contractor's responsibility to field locate all underground facilities prior to excavation operations.
- When excavations approach the approximate locations of the underground facilities, the exact location shall be determined by careful probing and hand digging. Once the facility is uncovered, adequate protection shall be provided to prevent damage to the existing facilities.
- Existing water and gas mains are shown on the plans, but water and gas service laterals are not shown. The Contractor shall field locate all such service lines prior to excavation operations and shall protect them from damage. Any damage to existing facilities caused by the Contractor's operations shall be repaired at his expense.
- The Contractor shall contact the Underground Service Alert at (800) 642-2444 two working days prior to excavation operations. The Contractor shall also be responsible to contact Santa Fe Pacific Pipelines at (209) 465-7369 at least two working days prior to excavation operations on Odell Ave.
- The County reserves the right to revise the locations of the service laterals shown on these plans prior to their actual installation. No adjustment of compensation will be made for any relocated service laterals regardless of the reason for such relocation.
- The Contractor shall protect and preserve all survey monument frames and covers. Where necessary, survey monument frames and covers shall be removed and reset. Full compensation for preserving and resetting survey monument frames and covers shall be considered as included in the other items of work involved and no additional compensation shall be provided.
- All existing drainage ditches that are disturbed by construction activities shall be restored to their original condition and grade.
- The County has obtained a general construction storm water permit in accordance with the Clean Water Act, National Pollution Discharge Elimination System (NPDES) and State Water Board Order No. 92-08-DWQ.
The Contractor shall be responsible for the preparation of the Storm Water Pollution Prevention Plan (SWPPP) as required by the NPDES regulations. The SWPPP shall be submitted to the County for approval prior to the start of construction operations. Two copies of the approved SWPPP shall be provided to the County. The contractor shall have one copy available on the job site.
The Monitoring and Reporting Program shall be conducted by the County.
- The County shall obtain an Encroachment Permit from the City at the County's expense. The Contractor shall execute this encroachment permit with the City prior to the start of work.
- The Contractor shall notify Dave Olsen at the City of Stockton prior to the start of construction operations at (209) 937-8250.
- City of Stockton shall inspect each point of connection to the City Sewer. City shall also inspect sewer mains and trench to 1 foot above pipe and service laterals from main to property line, excluding cleanout.
- All improvements shall be constructed in strict accordance with the following:
City of Stockton Standard Specifications adopted February 1, 1991, and all amendments thereto to date, and California Department of Transportation Standard Specifications (CALTRANS) dated July 1992, where applicable. All work shall be under the inspection of the respective entity. At the time the project is bid, use City of Stockton Standards currently adopted by the City Council.
- After the sanitary sewer pipe has been laid and backfilled, it shall be tested for watertightness as specified in Section 71-B, "Sanitary Sewers", of the special provisions.
- Finished elevation of new frames and covers shall match surface of new A.C. overlay unless noted otherwise.

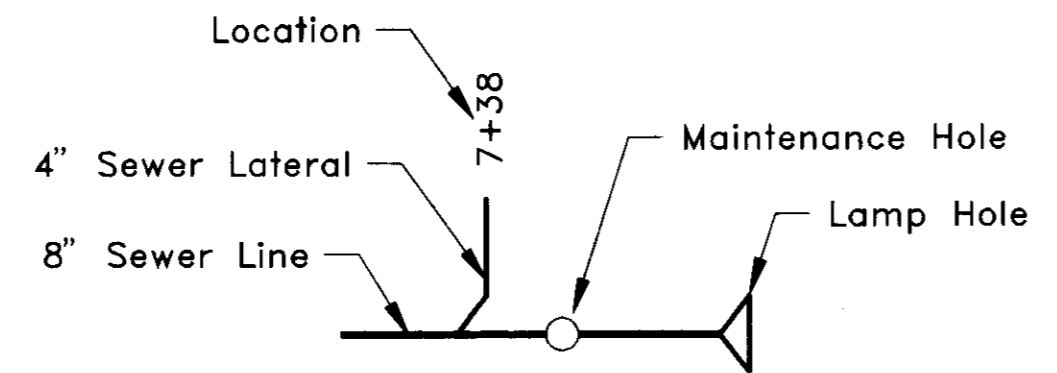


NOTE:
Shading denotes limits of 0.12' A.C. Overlay.
See Overlay Schedule for limits of work.

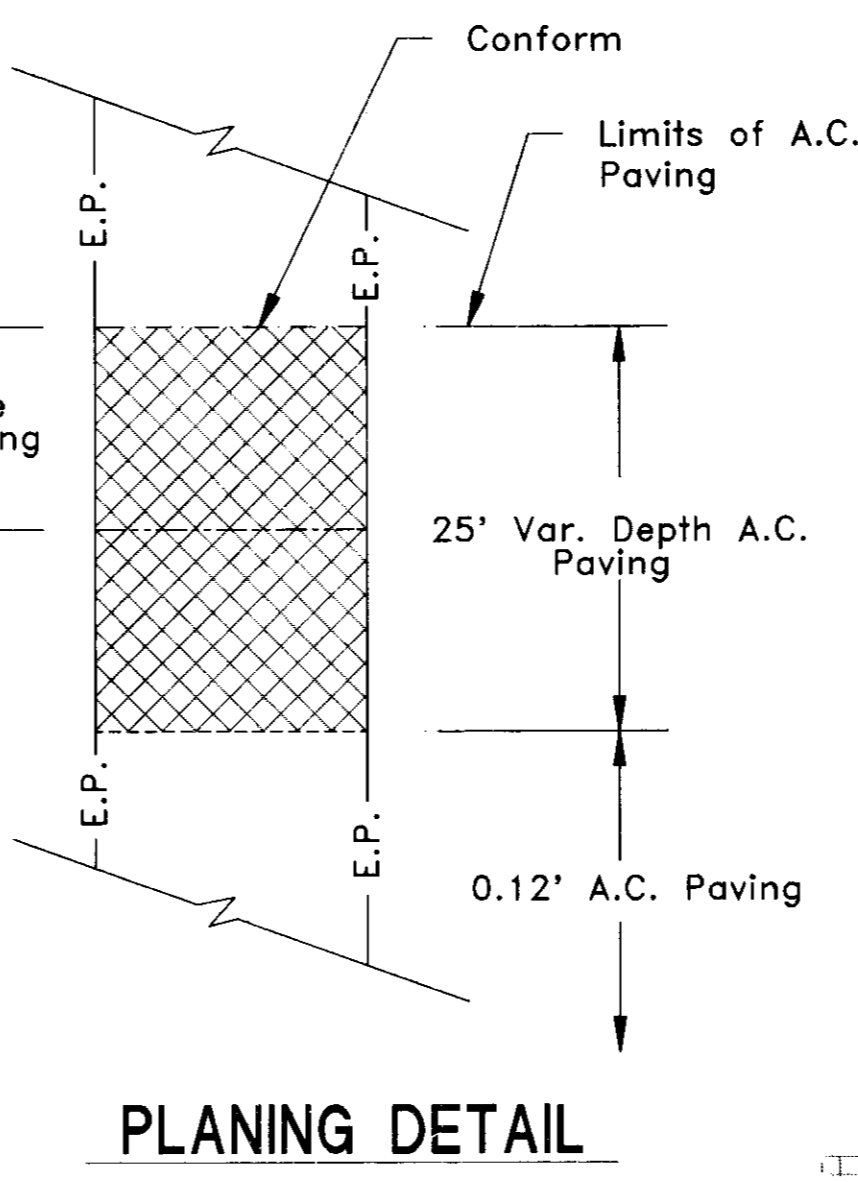
KEY PLAN

LEGEND

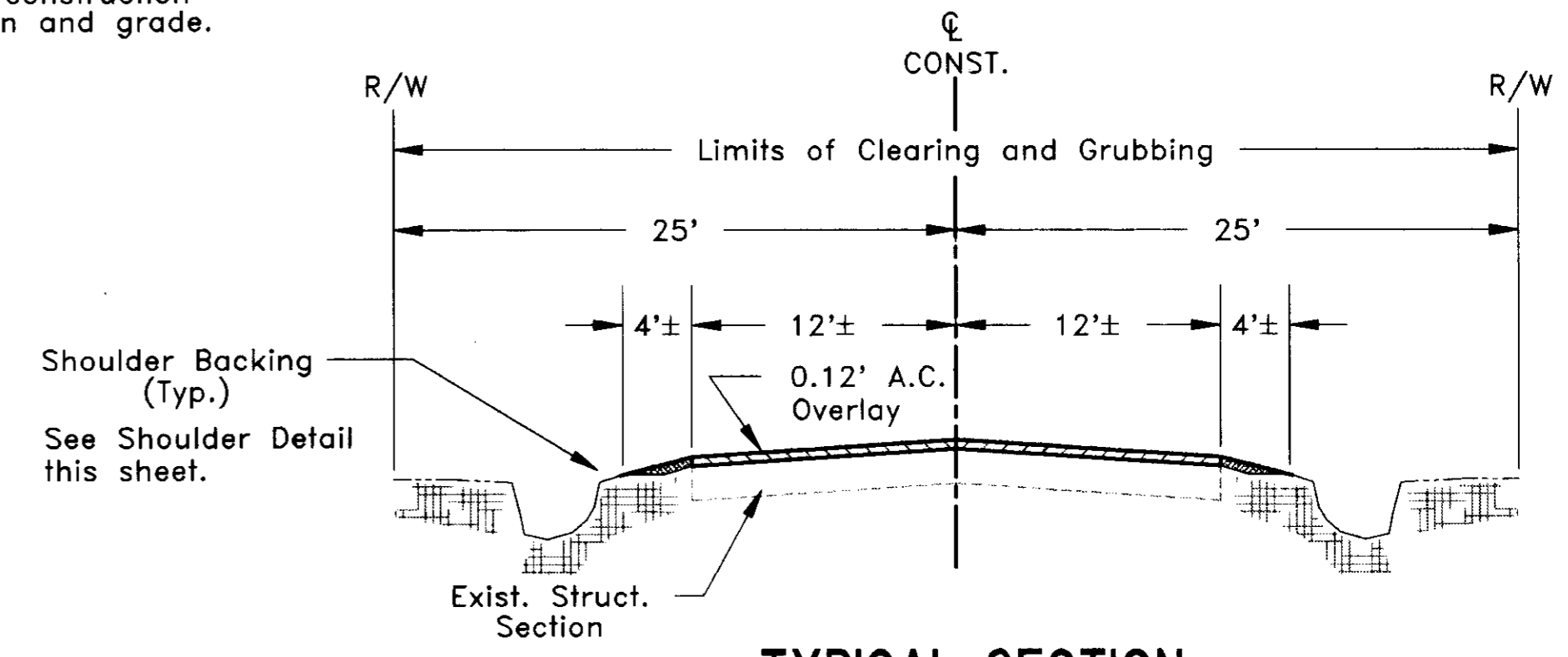
- 2" G ----- Existing Gas line and size
- 6" W ----- Existing Water line and size
- 24" S ----- Existing Sewer line and size
- 8" LP ----- Existing Petroleum Pipeline and size
- Existing Monument Frame and Cover
- Existing Drainage Grate
- Existing X-Dr. or Drainage pipe



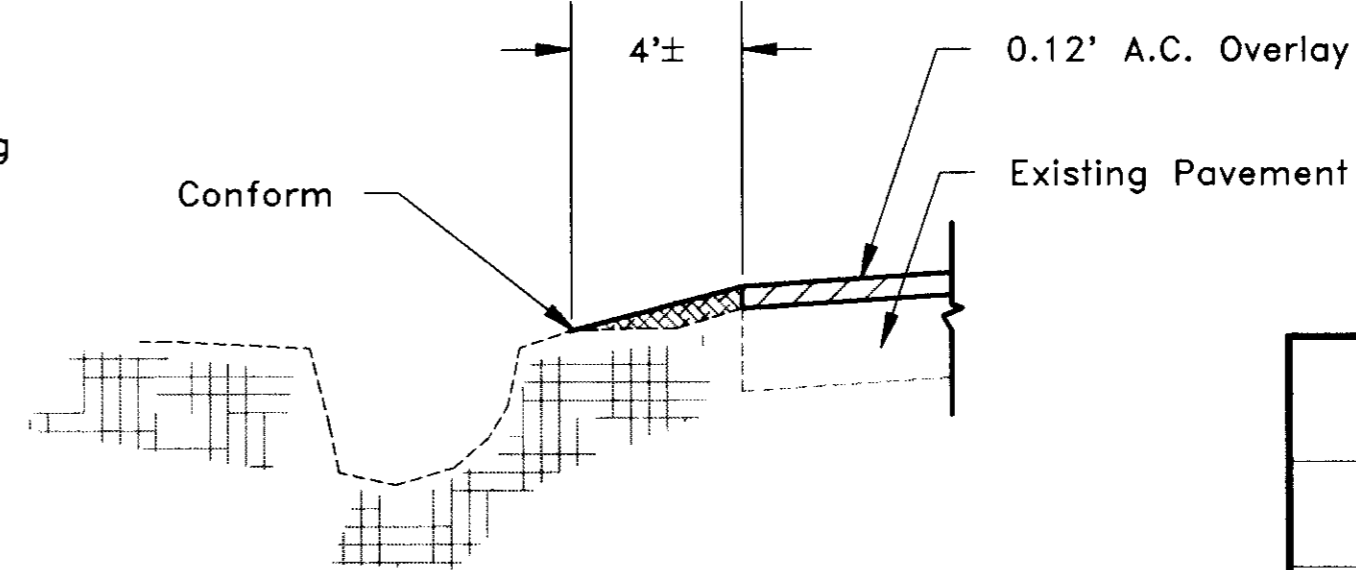
NEW CONSTRUCTION



PLANING DETAIL



TYPICAL SECTION



SHOULDER DETAIL

OVERLAY SCHEDULE	
ROAD	LIMITS
ODELL AVENUE	Sta. 2+50 to Sta. 25+98
HOWE AVENUE	Sta. 15+12 to Sta. 27+88
FAIRMONT AVENUE	Sta. 2+60 to Sta. 30+00
HARRIS AVENUE	Sta. 15+12 to Sta. 31+65
IVY AVENUE	Sta. 6+05 to Sta. 28+20
LOWELL AVENUE	Sta. 15+12 to Sta. 28+20

RECORD DRAWING
 Corrections:
 No. _____ Date _____
 By _____

**MOSSWOOD SEWER PROJECT
 PHASE 2
 GENERAL NOTES AND KEY PLAN**

DEPARTMENT OF PUBLIC WORKS
 CITY OF STOCKTON, CALIFORNIA

SCALE: NOTED	APPROVED BY: DATE: 12/22/95	SHEET NO. 2
DESIGNED BY: D.G.		OF 12 SHEETS
DRAWN BY: Tony Refugio	<i>Paul M. Smith</i> CITY ENGINEER	
CHECKED BY:	STOCKTON, CALIF.	
RECORD DWG.:		

COUNTY OF SAN JOAQUIN **SCALE: NONE**

DRAWN BY	DATE	PROJECT ENGINEER	DATE	CHECKED	DATE	SUBMITTED	DATE	APPROVED	DATE
		<i>David A. Silva</i>	1-2-96	<i>Tony Refugio</i>	1/3/96	<i>Manuel Salas</i>	1/3/96	<i>[Signature]</i>	1/14/96

SU 3092
 REVISIONS
 DATE

INDEX OF SHEETS

- 1 TITLE SHEET
- 2 GENERAL NOTES AND KEYPLAN
- 3 ODELL AVE. (STA. 1+00 to STA. 15+00)
- 4 FAIRMONT AVENUE (STA. 2+00 to STA. 15+00)
- 5 IVY AVENUE (STA. 21+60 to STA. 28+50)
- 6 HARRIS AVENUE (STA. 15+00 to STA. 26+00)
- 7 LOWELL AVENUE (STA. 24+90 to STA. 28+50)
- 8 EL DORADO STREET (STA. 1+00 to STA. 15+00)
- 9 EL DORADO STREET (STA. 15+00 to STA. 28+00)
- 10 HARRIS AVENUE (STA. 26+00 to STA. 31+60),
EL DORADO STREET (STA. 28+00 to STA. 33+07)
- 11 CONSTRUCTION DETAILS
- 12 CONSTRUCTION NOTES

COUNTY OF SAN JOAQUIN
 DEPARTMENT OF PUBLIC WORKS
 STOCKTON, CALIFORNIA
 PROJECT PLANS FOR

MOSSWOOD SEWER PROJECT PHASE 2

APPLICABLE STANDARD PLANS

A10A, A10B, T1, T2, T3, T12

TO BE SUPPLEMENTED BY STANDARD PLANS DATED JULY 1992
 AND LATEST EDITION OF CITY OF STOCKTON STANDARD PLANS

COUNTY OF SAN JOAQUIN

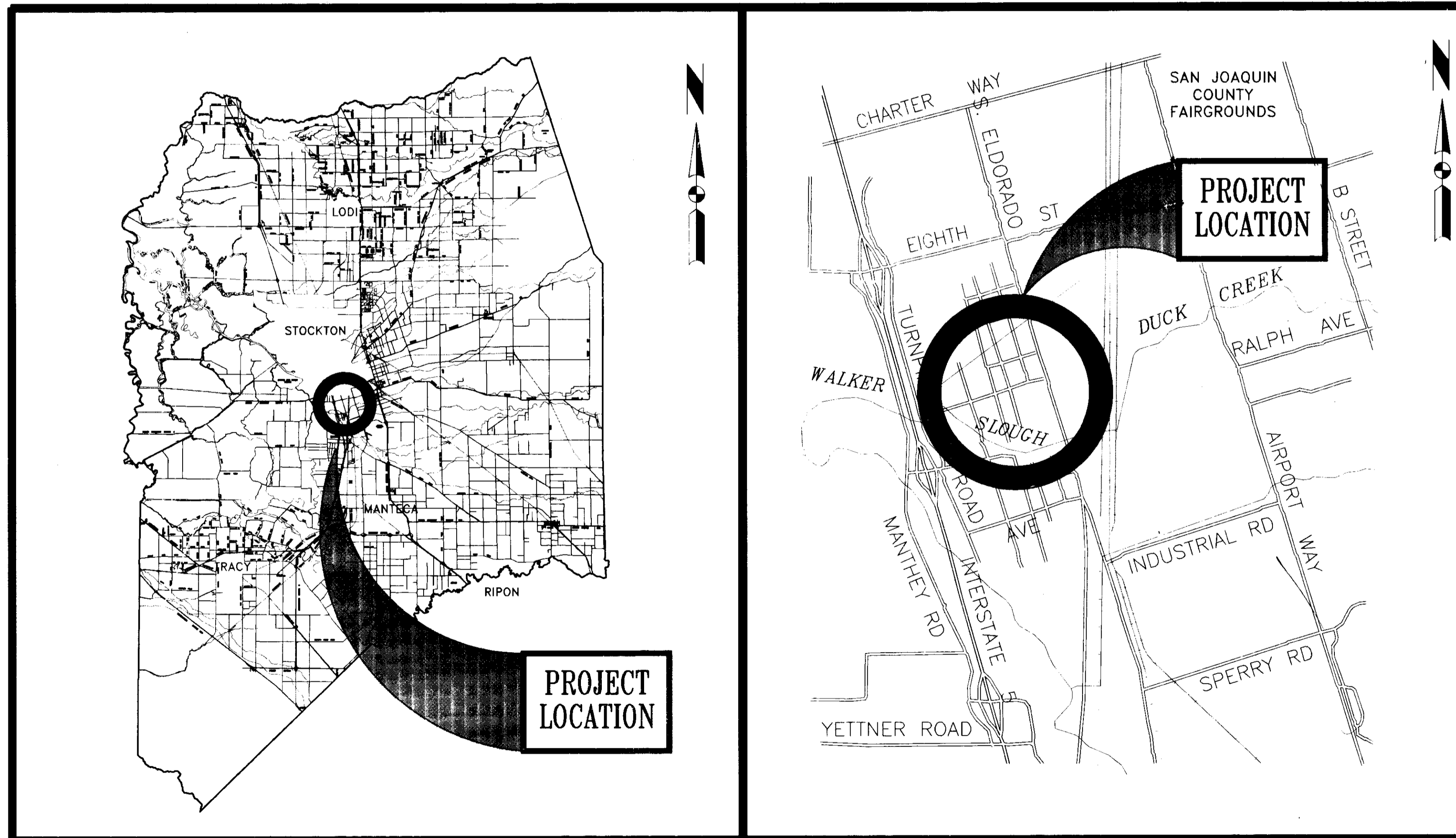
Submitted January 4, 1996

Henry M. Hirata
 HENRY M. HIRATA
 R.C.E. 21258
 Director of Public Works



ABBREVIATIONS

- ALT. = Alternative
- B.L. = Base Line
- CONST. = Construct/Construction
- C.O.S. = City of Stockton
- C.S.P.A. = Corrugated Steel Pipe Arch
- D.I. = Drainage Inlet
- DR. = Drive
- DWG. = Drawing
- E.P. = Edge of Pavement
- E.T.W. = Edge of Traveled Way
- F.L. = Flow Line
- M.H. = Maintenance Hole
- R. & D. = Remove and Dispose
- R. & S. = Remove and Salvage
- R./W. = Right of Way
- S.D.I. = Storm Drain Inlet
- TYP. = Typical
- X-DR. = Cross Drain



PROJECT LOCATION MAP
(NOT TO SCALE)

PROJECT VICINITY MAP
(NOT TO SCALE)

RECORD DRAWING
 Checked by: R. Eakin
 Date: 1/22/96
 Any changes to this drawing must be made in accordance with the City of Stockton Engineering Department's Record Drawing Policy.

* Note: City Engineer's approval given as to Sanitary Sewer Utilities only.

**MOSSWOOD SEWER PROJECT
 PHASE 2
 TITLE SHEET**

DEPARTMENT OF PUBLIC WORKS CITY OF STOCKTON, CALIFORNIA		SHEET NO. 1 OF 12 SHEETS
SCALE: NONE	APPROVED BY: DATE: <i>Donald W. Lodge</i> 1/22/96	
DESIGNED BY: D.G.	CHECKED BY: <i>Paul M. Sennhaug</i>	
DRAWN BY: T.R.	CITY ENGINEER * STOCKTON, CALIF.	
RECORD DWG.:		

ACCEPTABLE TO: *Donald W. Lodge* DATE: 12/22/95
 ASSISTANT DIRECTOR
 Municipal Utilities Department /
 Engineering Manager

NO.	DESCRIPTION	DRWN BY	CHKD BY	APP BY	DATE

PROJECT ENGINEER: <i>Dean A. Hilman</i> DATE: 1-2-96	SENIOR ENGINEER: <i>Marcel Hair</i> DATE: 1/3/96	APPROVAL RECOMMENDED BY: <i>Paul M. Sennhaug</i> DATE: 1/4/96
FILE NAME	DRAWER	SHEET NO.
C.A.D. FILE		
\tony\mooswood\plan\phase_2\title		

SU 3093