

8" DIAMETER ALT. SEWER PIPE	
Location	Quantity
STADIUM DRIVE	381 L.F.
UTAH AVENUE	310 L.F.
SAN RAFAEL AVENUE	670 L.F.
TOTAL	1,361 L.F.

A.C. (MISC. AREAS) 0.50' TRENCH REPAIR			
Location	Quantity		
	MAINS	LATERALS	TOTAL
FULTON	172	19	141 S.Y.
STADIUM	170	16	186 S.Y.
UTAH AVE		48	48 S.Y.
SAN RAFAEL	577	103	680 S.Y.
TOTAL			4,050 S.Y.

PLANING ASPHALT CONCRETE PAVEMENT	
Location	Quantity
FULTON STREET	690 S.Y.
STADIUM DRIVE	454 S.Y.
UTAH AVENUE	967 S.Y.
SAN RAFAEL AVENUE	1,750 S.Y.
TOTAL	4,050 S.Y.

MAINTENANCE HOLE (M.H.) & FRAME COVER (M.H.)	
Location	Quantity
FULTON AVENUE	2 EA.
UTAH AVENUE	4 EA.
SAN RAFAEL AVENUE	6 EA.
TOTAL	11 EA.

4" DIAMETER ALT. SEWER PIPE	
Location	Quantity
FULTON AVENUE	174 L.F.
STADIUM DRIVE	145 L.F.
UTAH AVENUE	454 L.F.
SAN RAFAEL AVENUE	1,004 L.F.
TOTAL	1,777 L.F.

ADJUST MAINTENANCE HOLE FRAMES AND COVERS	
Location	Quantity
FULTON STREET	
STA. 12+50	1 EA.
STA. 15+25	1 EA.
SAN RAFAEL AVENUE	
STA. 12+50	1 EA.
STA. 15+25	1 EA.
TOTAL	4 EA.

<del>LAMPHOLE (L.H.) &amp; FRAME AND COVER (L.H.)</del>	
Location	Quantity
SAN RAFAEL AVENUE	TOTAL 1 EA.

6" DIAMETER ALT. SEWER PIPE	
Location	Quantity
FULTON AVENUE	387 L.F.
UTAH AVENUE	440 L.F.
SAN RAFAEL AVENUE	622 L.F.
TOTAL	1,449 L.F.

MAINTAIN EXISTING LAWN (SOD)	
Location	Quantity
63 SERVICES @ 3.33 S.Y.	TOTAL 210 S.Y.

SERVICE CLEANOUT	
Location	Quantity
FULTON AVENUE	6 EA.
STADIUM DRIVE	5 EA.
UTAH AVENUE + 2	18 EA.
SAN RAFAEL AVENUE	36 EA.
TOTAL	65 EA.

ASPHALT CONCRETE (TYPE B)	
Location	Quantity
ROADWAY OVERLAY	688 TONS
TRENCH REPAIR	484 TONS
TOTAL	1,172 TONS

PAVEMENT REINFORCING FABRIC	
LOCATION	QUANTITY
Fulton Street	1,443 S.Y.
Stadium Drive	1,058 S.Y.
Utah Avenue	2,026 S.Y.
San Rafael Avenue	3,640 S.Y.
TOTAL	8,167 S.Y.

Mike S.  
11/20/96

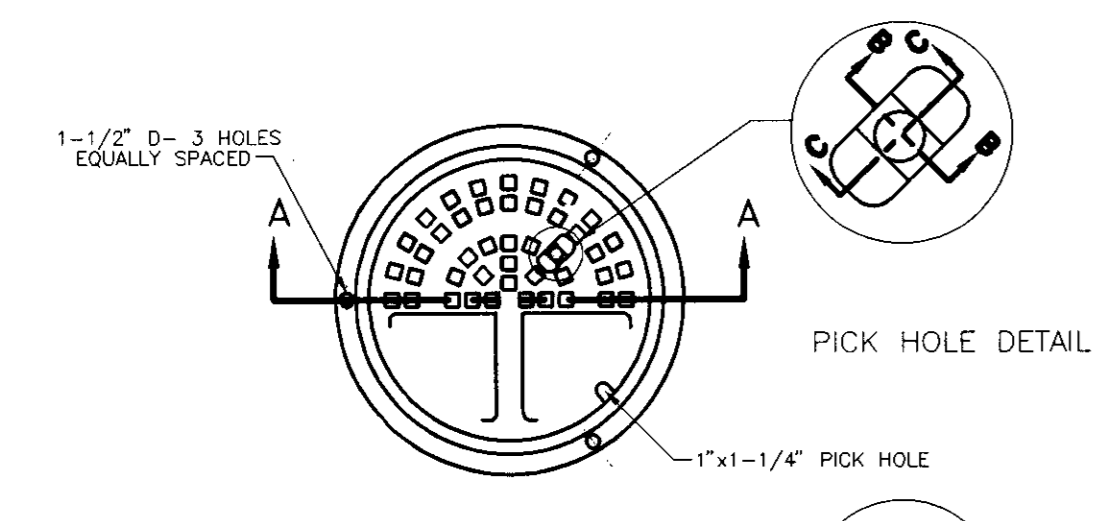
WEST LANE HEIGHTS / PARK SEWER PROJECT, PHASE 2			
SUMMARY OF QUANTITIES			
DEPARTMENT OF PUBLIC WORKS CITY OF STOCKTON, CALIFORNIA			
SCALE: NONE	APPROVED BY: DATE: 7-3-96	SHEET NO. 7	
DESIGNED BY:		OF 7 SHEETS	
DRAWN BY: C.J.G.	<i>Henry S. Moore</i>	PROJECT NO.	
CHECKED BY:	CITY ENGINEER		
RECORD DWG.:	STOCKTON, CALIF.		

DRAWN BY	DATE	PROJECT ENGINEER	DATE	CHECKED	DATE	SUBMITTED	DATE	APPROVED	DATE
		<i>Alan S. Gilman</i>	7/19/96			<i>Renald Adonis</i>	7/23/96	<i>[Signature]</i>	7/10/96

COUNTY OF SAN JOAQUIN

SU 3100

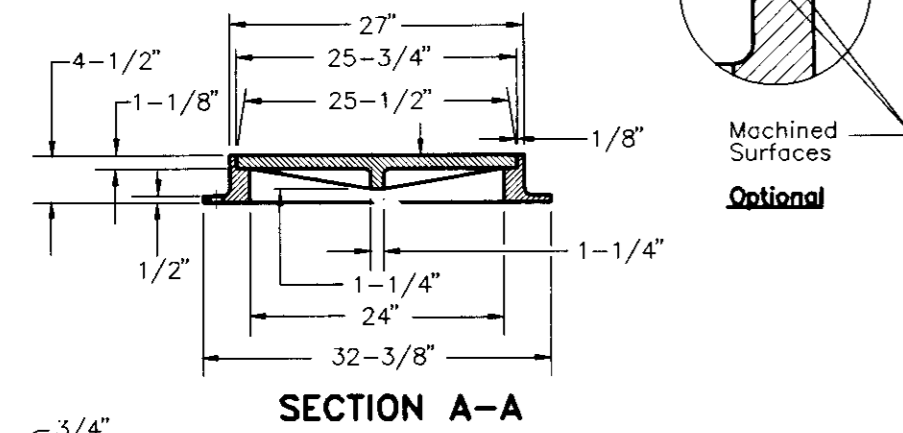
3916.6 C



PLAN VIEW

PICK HOLE DETAIL

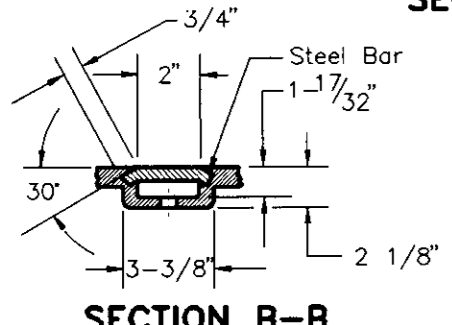
1"x1-1/4" PICK HOLE



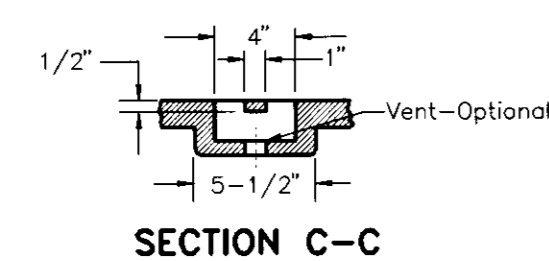
SECTION A-A

Machined Surfaces

Optional



SECTION B-B



SECTION C-C

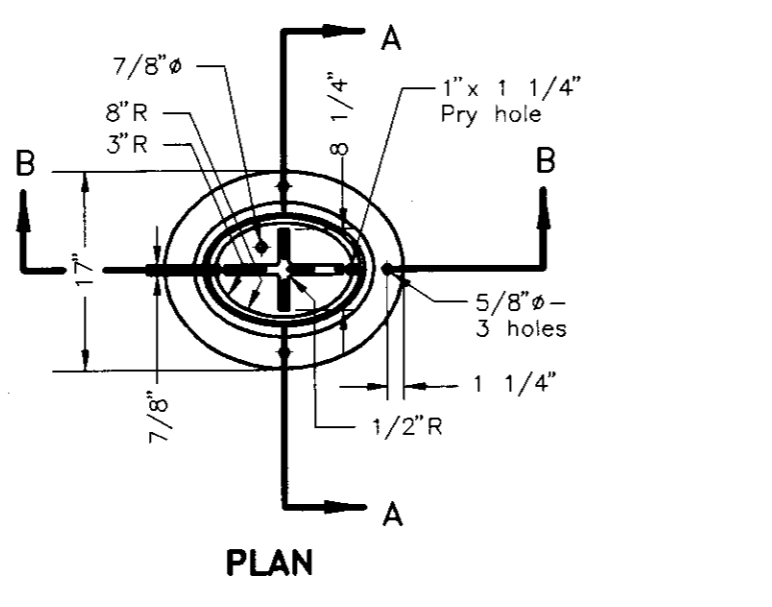
Vent-Optional

NOTES:

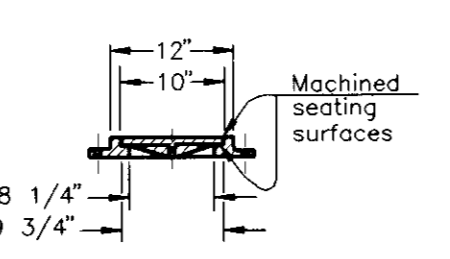
- Maintenance Hole Frame and Cover to be Pinkerton A-624, D&L A1094 Frame with A-1032-18 cover or equal.
- Cover shall be designed to withstand HS20-44 highway loading.
- Frame and Cover shall be fully machined to assure inter changeability and a close quiet fit.
- The letter "SANITARY SEWER" or "SEWER" shall be cast into the cover. Letters shall be 2" high.

**M.H. FRAME & COVER**  
(Refer to C.O.S. Std. Dwg No. 54)

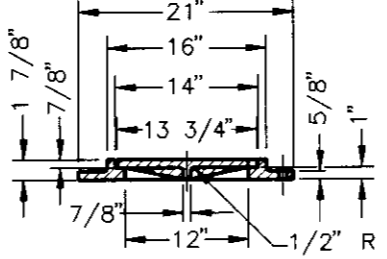
7  
8



PLAN



SECTION A-A



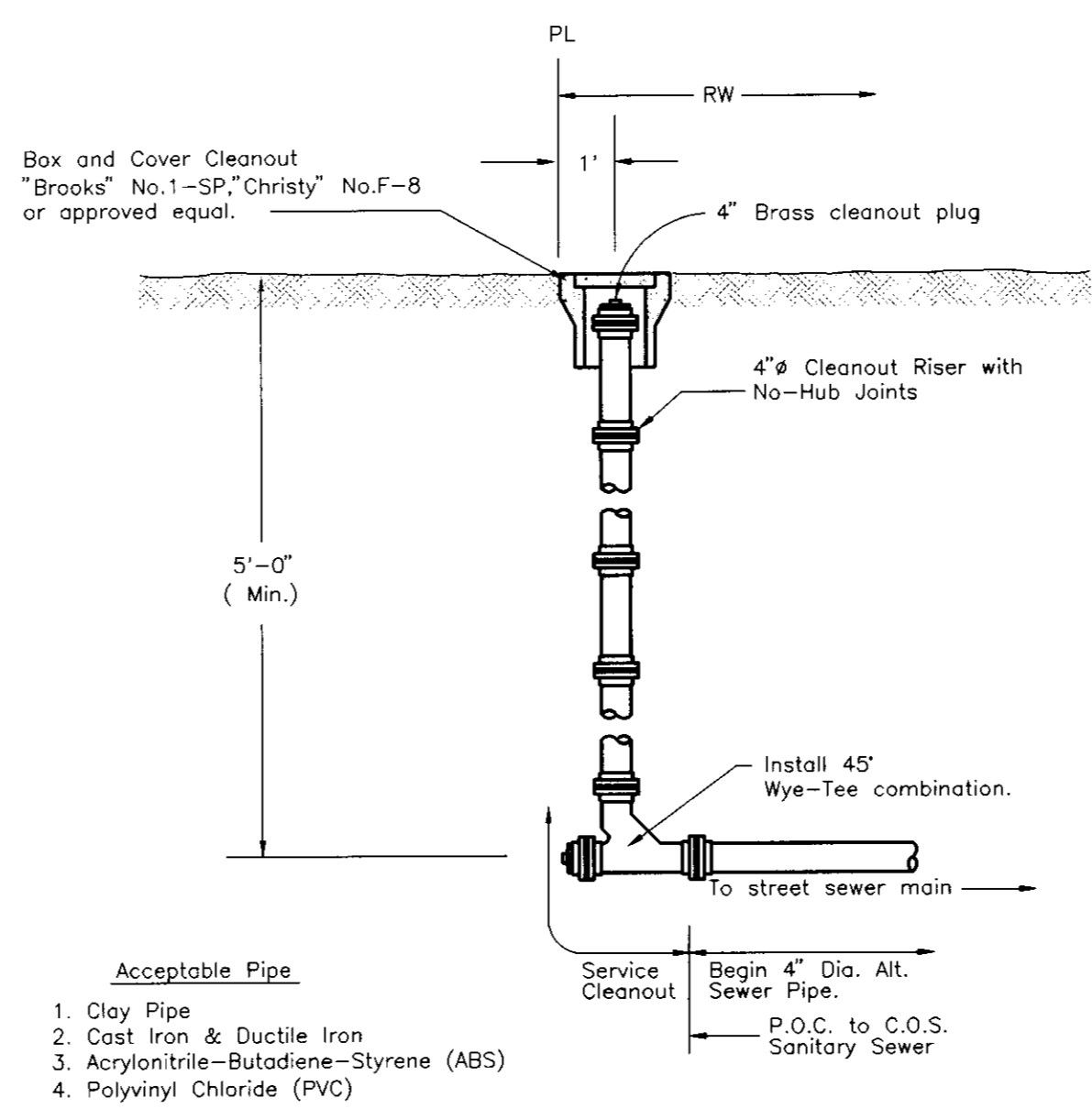
SECTION B-B

NOTES:

- Frame and Cover shall be manufactured of cast iron conforming to ASTM A-48-CLASS 30.
- Frame and Cover shall be HS20-44 rated.
- Frame shall weigh approx. 45 lbs.
- Cover shall weigh approx. 25 lbs.
- Frame and Cover shall be coated with bituminous material conforming to A.W.W.A. C203.
- Country of origin and manufacturer shall be cast into Frame and Cover. Letter "S" shall be cast into center of cover.

**LAMPHOLE FRAME & COVER**  
(Refer to C.O.S. Std. Dwg No. 59)

5  
8

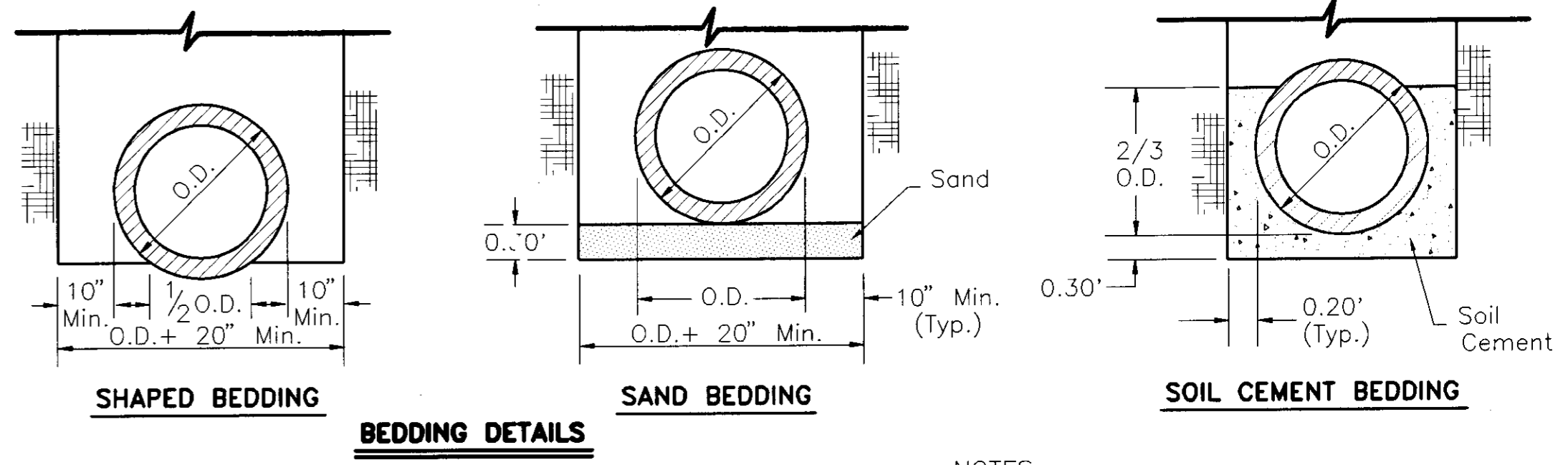


NOTES:

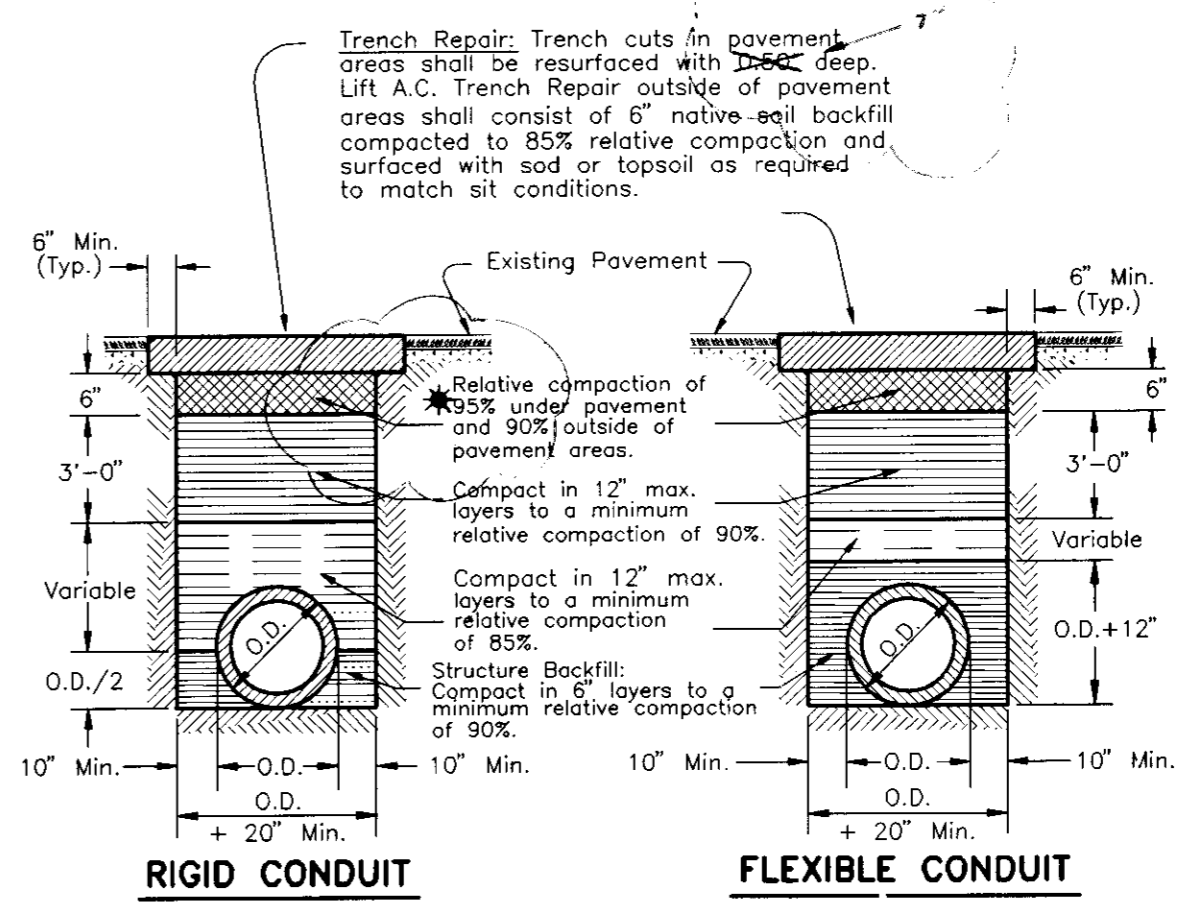
- When cleanout falls in driveway, install "Christy" No.F-8C or "Brooks" No.1-SP (or equal) Cast Iron Traffic Cover. "Brooks" No.3-RT may also be used.

**SERVICE CLEANOUT DETAIL**  
(Refer to C.O.S. Std. Dwg No. 64)

3  
8



BEDDING DETAILS

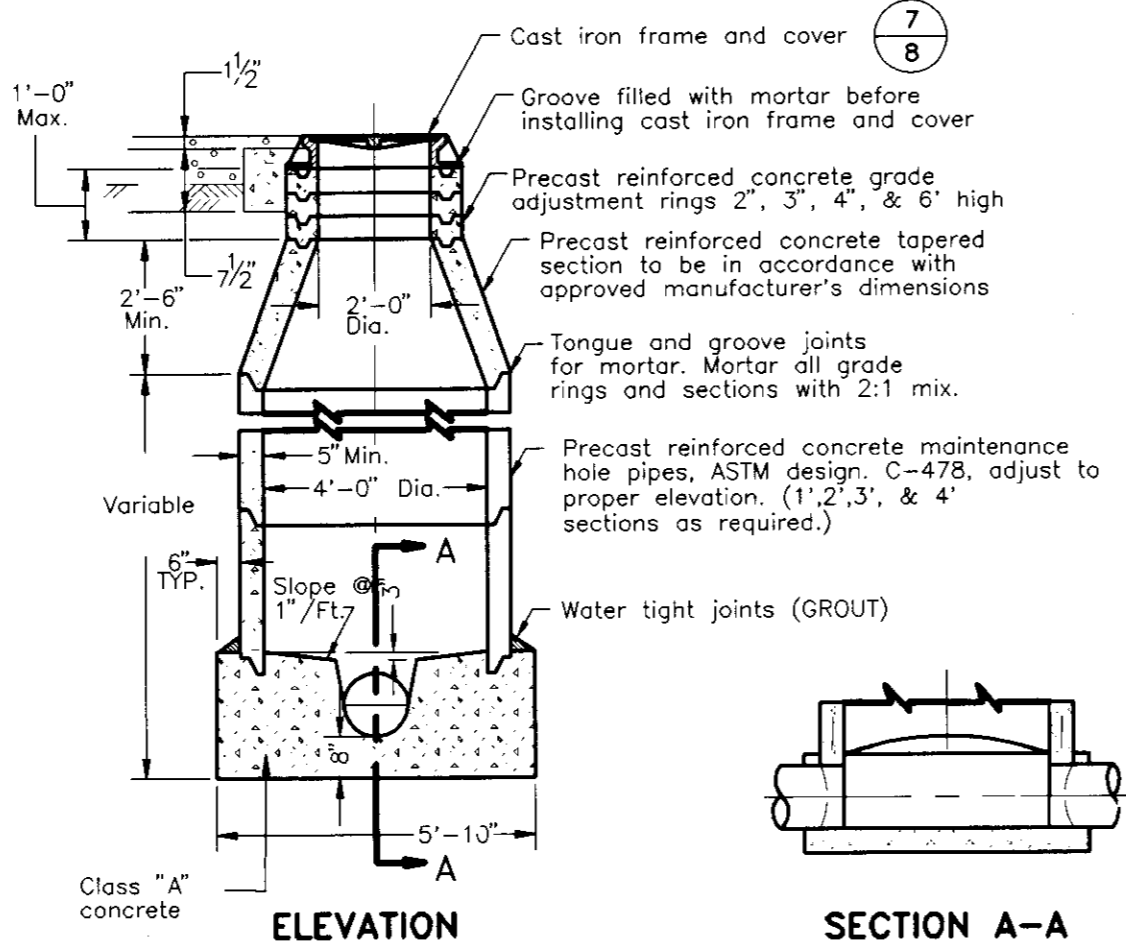


BACKFILL DETAILS

**TYPICAL TRENCH BACKFILL**

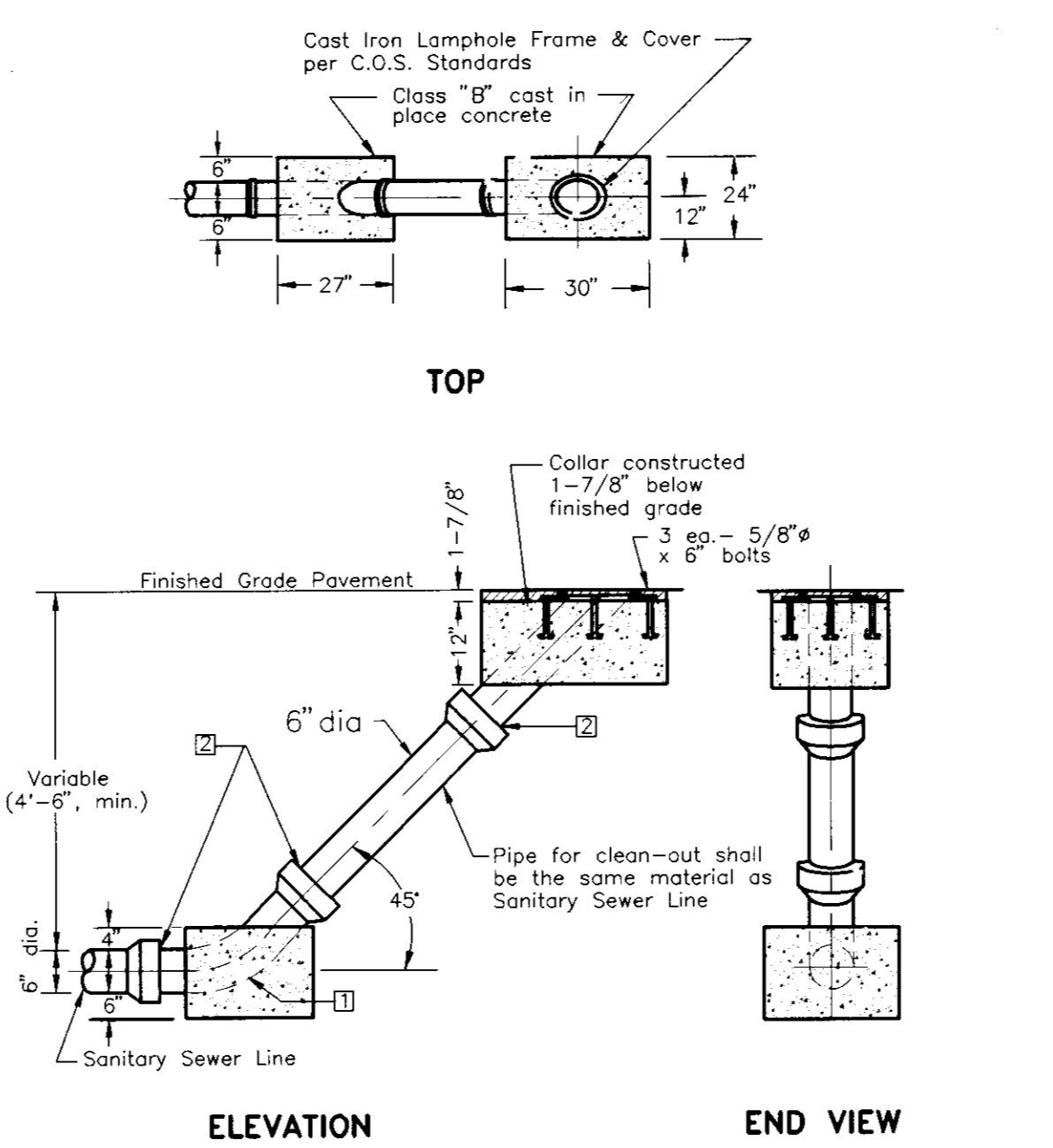
1  
8

- NOTES:
- Relative compaction of materials shall be tested in accordance with the State of California, Dept. of Transportation, Testing Manuals, test method No. California 216 or 231.
  - All existing pavement shall be neatly cut to line prior to trench excavation. The Contractor may use wheel- or knife-type or similar equipment that will produce a neat line cut.
  - The maximum payment width to be used for measurement of A.C. (Misc. Areas.) - Trench Repair Shall be the outside pipe diameter plus 3 feet.
- \* Minimum of 92% compaction under pavement on sewer main and laterals on Stadium Dr., San Rafael Ave, 14th Ave, and Fulton St.



**MAINTENANCE HOLE (M.H.)**  
(Refer to C.O.S. Std. Dwg. No. 55)

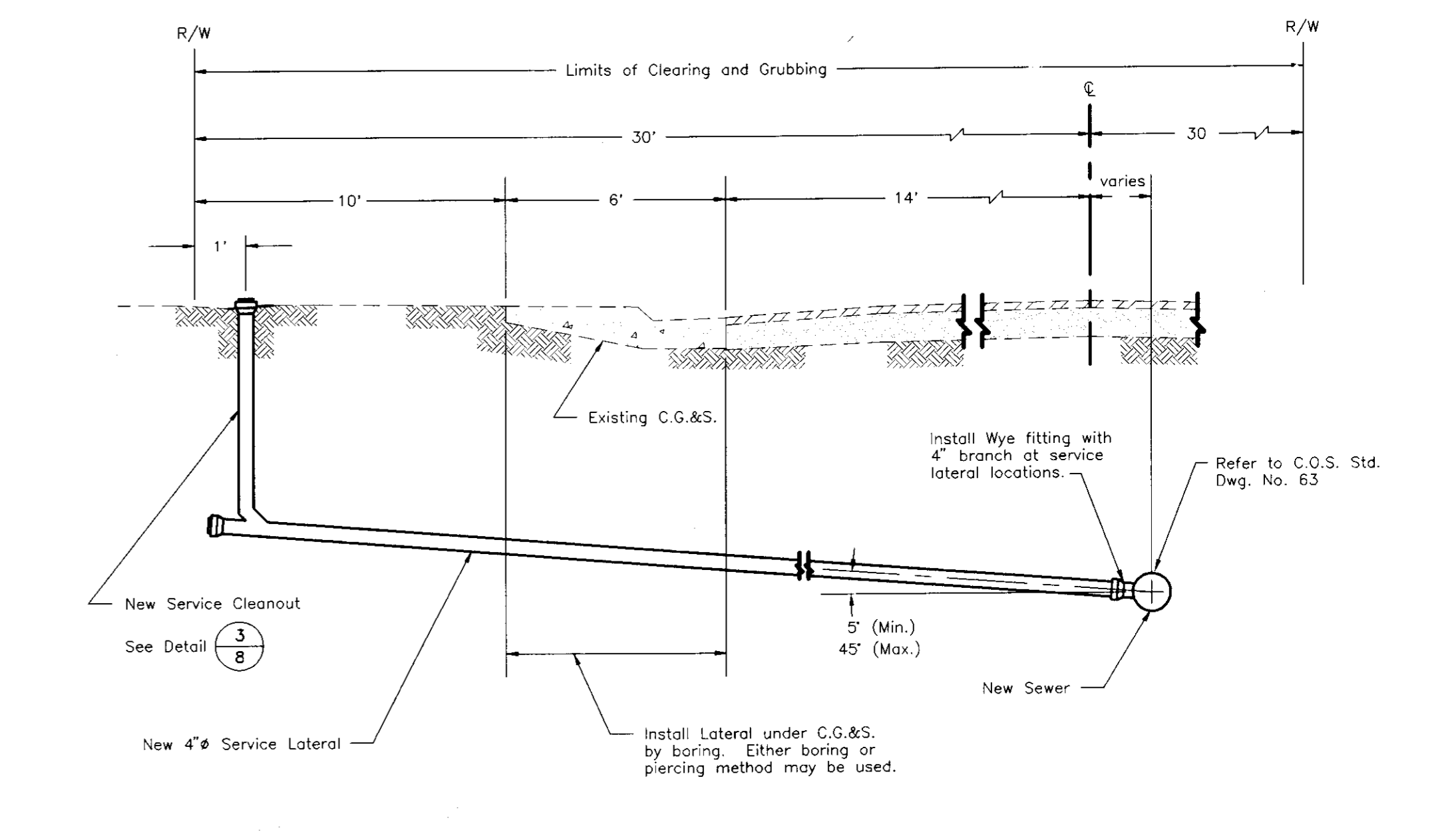
6  
8



- NOTES:
- 6 inch 45 degree Elbow
  - Joints are to be encased in concrete
  - Lamphole maybe used where approved by agency

**LAMPHOLE**  
(Refer to C.O.S. Std. Dwg No. 58)

4  
8



**TYPICAL SERVICE LATERAL**  
(Refer to C.O.S. Std. Dwg No. 63)

2  
8

**WEST LANE HEIGHTS / PARK SEWER PROJECT, PHASE 2**  
**CONSTRUCTION DETAILS**

DEPARTMENT OF PUBLIC WORKS  
CITY OF STOCKTON, CALIFORNIA

SCALE: NONE  
DESIGNED BY:  
DRAWN BY: Tony!  
CHECKED BY:  
RECORD DWG.:

APPROVED BY: DATE: 7-3-96  
7/3/96

SHEET NO. 6  
OF 7 SHEETS  
PROJECT NO.

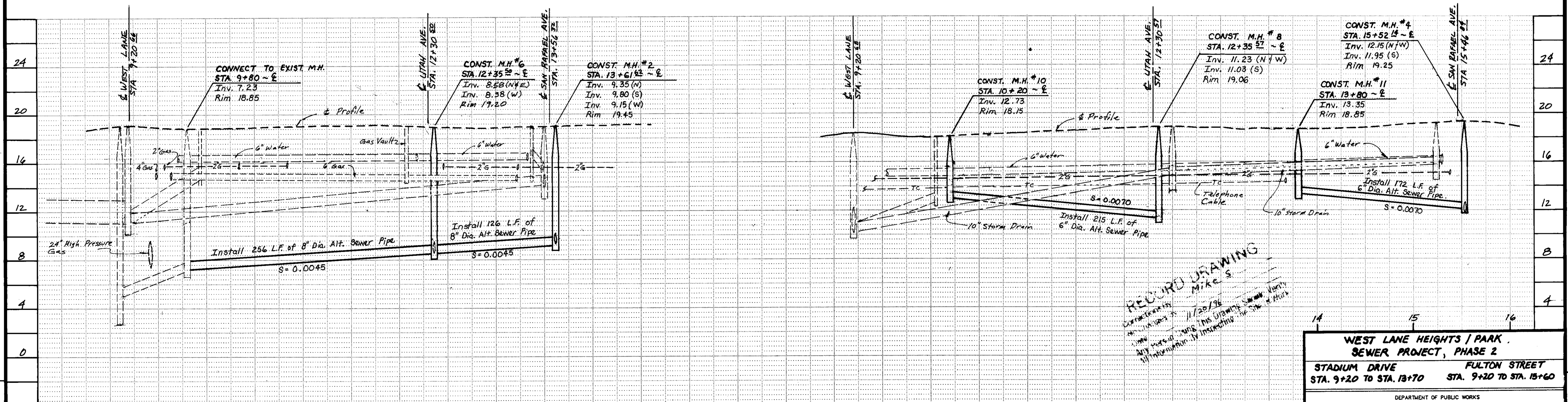
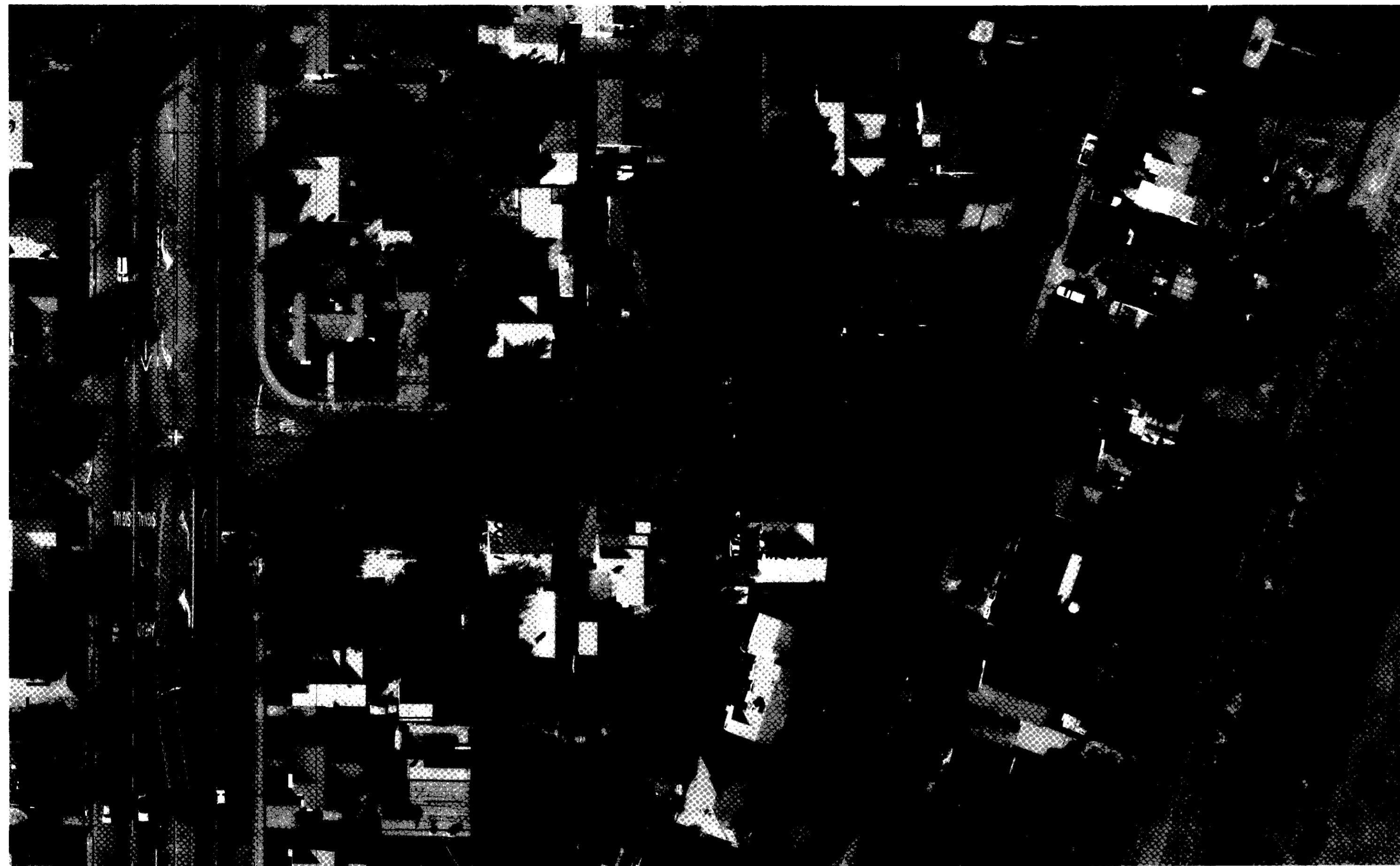
Kenneth S. Maciel  
CITY ENGINEER  
STOCKTON, CALIF.

DRAWN BY	DATE	PROJECT ENGINEER	DATE	CHECKED	DATE	SUBMITTED	DATE	APPROVED	DATE
		Dean S. Gilman	7/4/96			Manuel Delano	7/8/96		7/10/96

FILE NAME	DRAWER	SHEET NO.	ACAD
west_ln\phase2\plan\details			

COUNTY OF SAN JOAQUIN

SU 3101



REQUIRED DRAWING  
 11/20/76  
 THIS DRAWING SHOWS WORK  
 IN ACCORDANCE WITH THE INSTRUCTIONS  
 OF THE CITY ENGINEER

**WEST LANE HEIGHTS / PARK  
 SEWER PROJECT, PHASE 2**

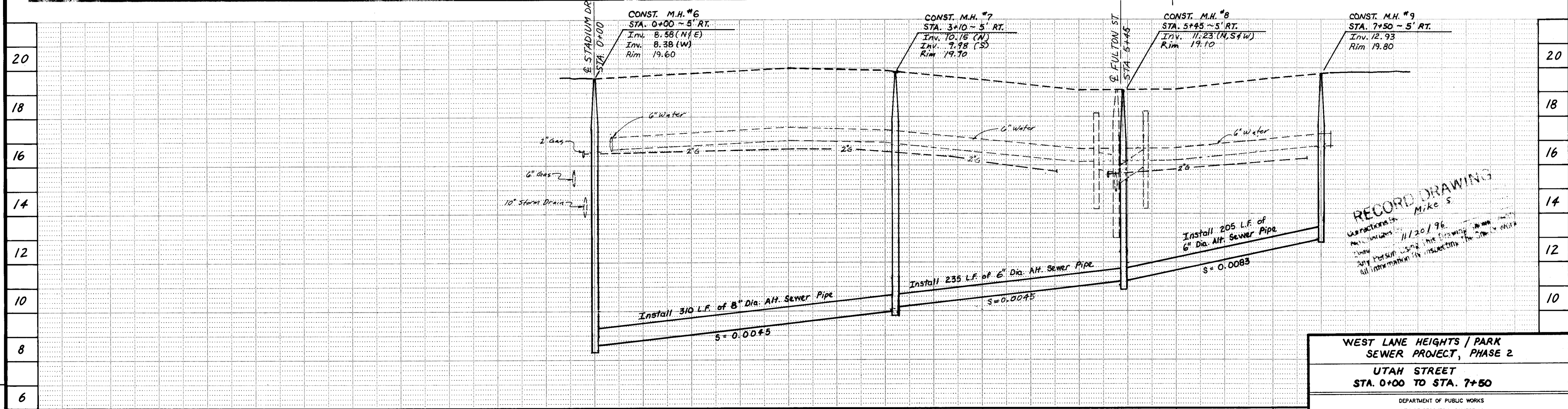
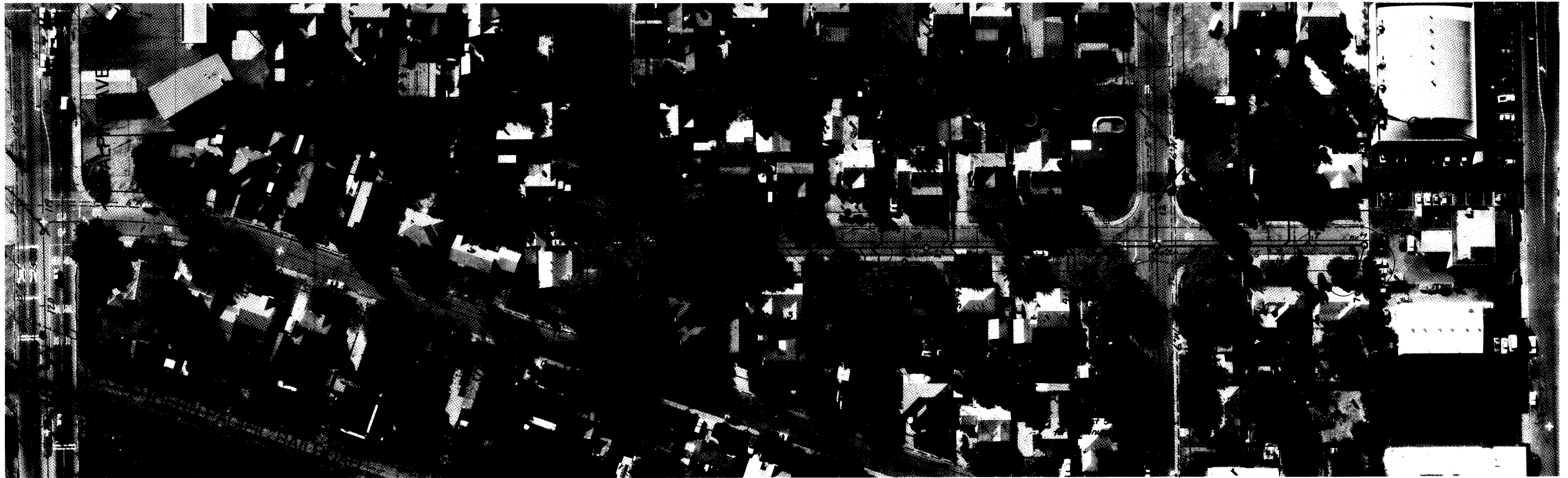
STADIUM DRIVE STA. 9+20 TO STA. 13+70  
 FULTON STREET STA. 9+20 TO STA. 15+60

DEPARTMENT OF PUBLIC WORKS CITY OF STOCKTON, CALIFORNIA	
SCALE: AS NOTED	APPROVED BY: DATE: 7-5-96
DESIGNED BY: D.G.	SHEET NO. 5
DRAWN BY: T.R.	OF 7 SHEETS
CHECKED BY: Kenneth J. Moorhead	PROJECT NO.
RECORD DWG.:	CITY ENGINEER STOCKTON, CALIF.

Cu. Yds.	Exc. Emb.	9	10	11	12	13			
DRAWN BY	DATE	PROJECT ENGINEER	DATE	CHECKED	DATE	SUBMITTED	DATE	APPROVED	DATE
		Dean S. Gilman	7/4/76			Manuel Salas	7/8/76	[Signature]	7/4/76
FILE NAME	DRAWER	SHEET NO.							

COUNTY OF SAN JOAQUIN  
 PLAN SCALE 1" = 50'  
 PROFILE HORIZONTAL SCALE 1" = 50'  
 VERTICAL SCALE 1" = 4'

SY 3102



**RECORD DRAWING**  
 Mike S.  
 11/20/96  
 Any person using this drawing without the City Engineer's approval is liable for any and all consequences.

**WEST LANE HEIGHTS / PARK SEWER PROJECT, PHASE 2**  
**UTAH STREET**  
**STA. 0+00 TO STA. 7+50**

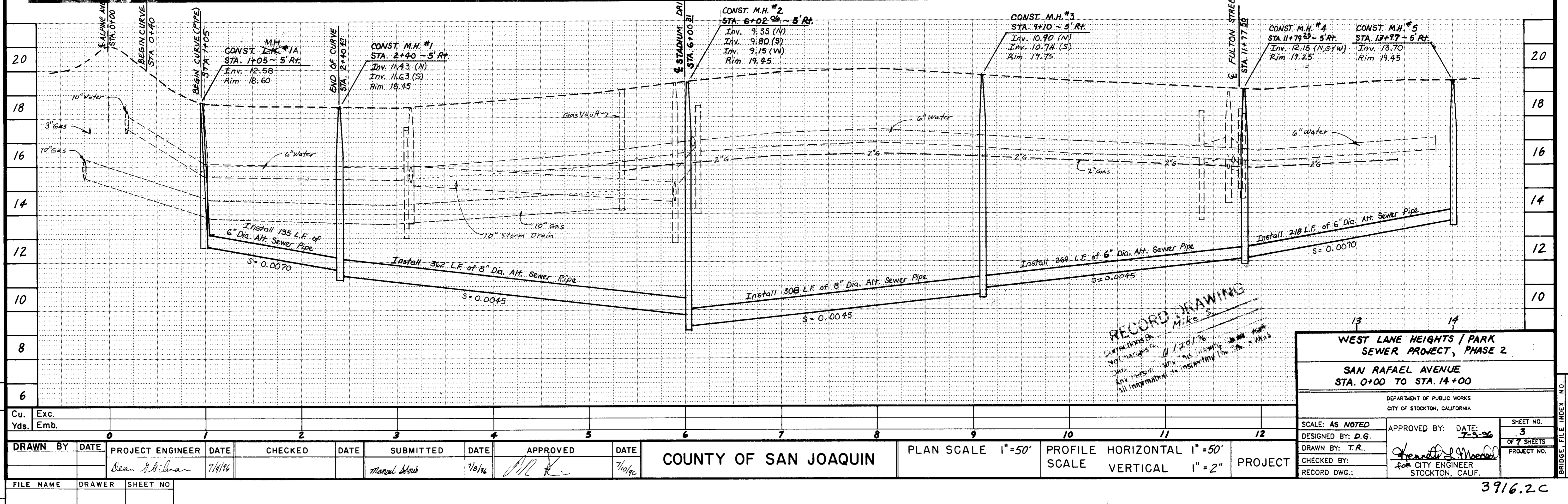
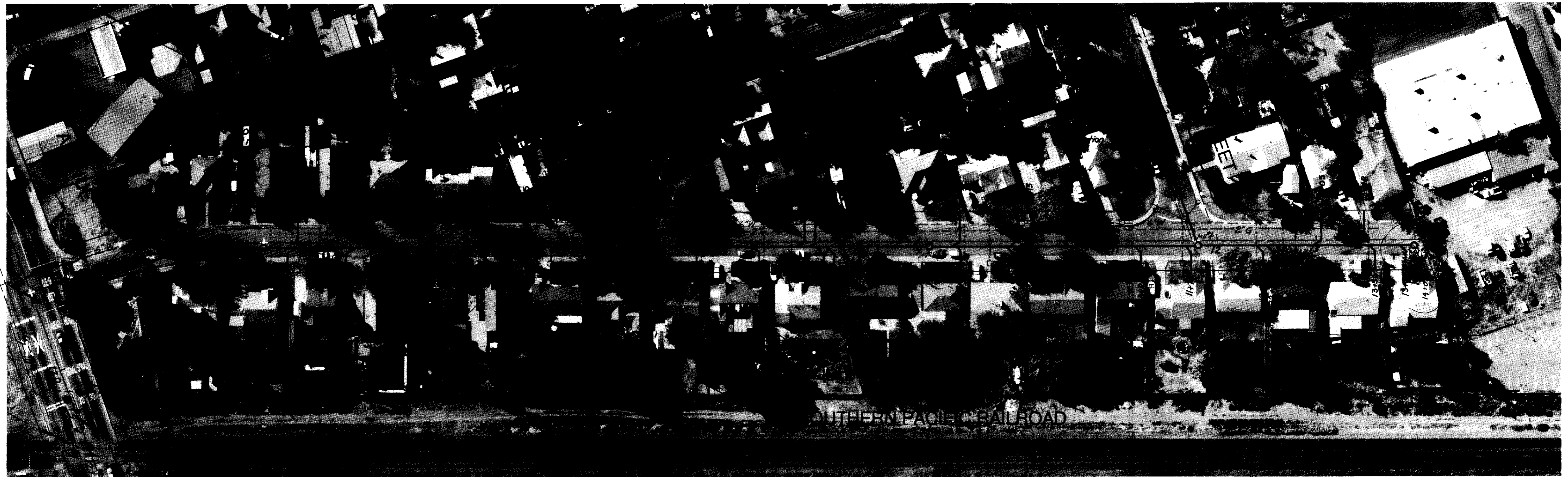
DEPARTMENT OF PUBLIC WORKS  
 CITY OF STOCKTON, CALIFORNIA

SCALE: AS NOTED	APPROVED BY: DATE: <i>[Signature]</i> 7-3-96	SHEET NO. 4
DESIGNED BY: D.G.	DRAWN BY: T.R.	OF 7 SHEETS
CHECKED BY:	RECORD DWG.:	PROJECT NO.

Cu. Yds.	Exc. Emb.	DRAWN BY: DATE		PROJECT ENGINEER: DATE		CHECKED: DATE		SUBMITTED: DATE		APPROVED: DATE		COUNTY OF SAN JOAQUIN	PLAN SCALE 1"=50'	PROFILE HORIZONTAL SCALE 1"=50'	VERTICAL SCALE 1"=2'	PROJECT
		<i>[Signature]</i> 7/1/96		<i>Dean &amp; Gilman</i> 7/1/96				<i>David Adams</i> 7/1/96		<i>[Signature]</i> 7/1/96						
FILE NAME	DRAWER	SHEET NO.														

SU 3103

BRIDGE FILE INDEX NO.



Cu. Yds.	Exc. Emb.	0	1	2	3	4	5	6	7	8	9	10	11	12
DRAWN BY	DATE	PROJECT ENGINEER	DATE	CHECKED	DATE	SUBMITTED	DATE	APPROVED	DATE	COUNTY OF SAN JOAQUIN				
		Dean J. Gilman	7/4/76			Manuel Delois	7/8/76	<i>[Signature]</i>	7/10/76	PLAN SCALE 1"=50' PROFILE HORIZONTAL 1"=50' SCALE VERTICAL 1"=2" PROJECT				
FILE NAME	DRAWER	SHEET NO.												

**WEST LANE HEIGHTS / PARK SEWER PROJECT, PHASE 2**

**SAN RAFAEL AVENUE STA. 0+00 TO STA. 14+00**

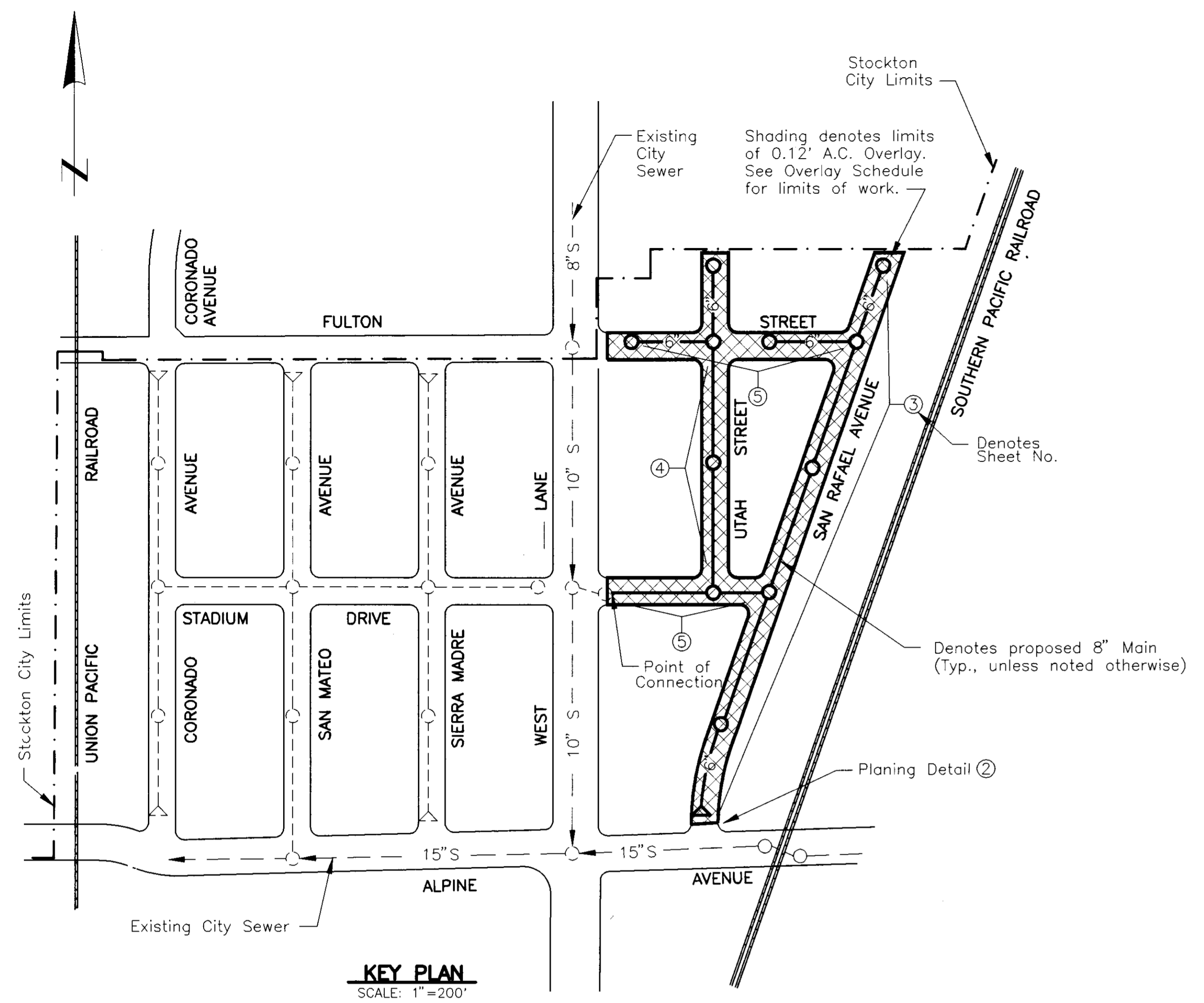
DEPARTMENT OF PUBLIC WORKS  
CITY OF STOCKTON, CALIFORNIA

SCALE: AS NOTED	APPROVED BY: DATE: <i>[Signature]</i> 7-3-76	SHEET NO. 3
DESIGNED BY: D.G.	DRAWN BY: T.R.	OF 7 SHEETS
CHECKED BY:	FOR CITY ENGINEER	PROJECT NO.
RECORD DWG.:	STOCKTON, CALIF.	

SM 304  
 REVISION DATE

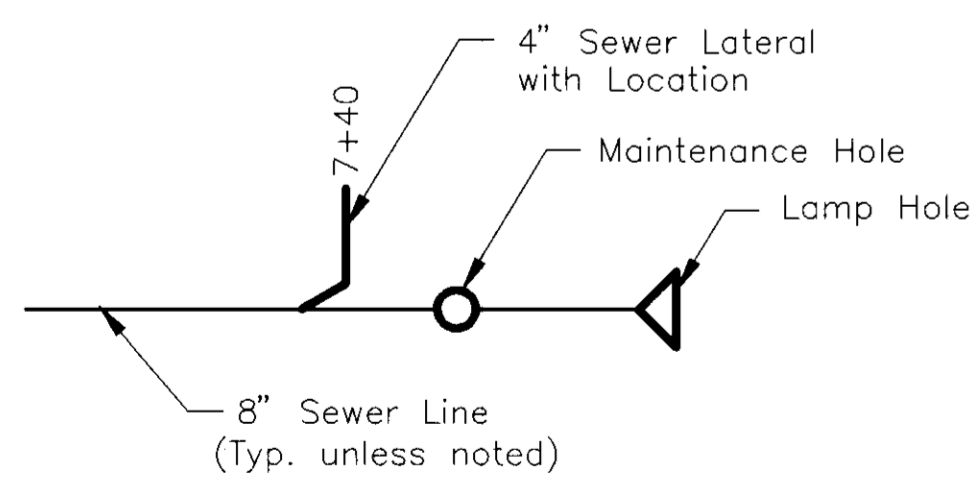
**GENERAL NOTES**

1. All elevations are U.S.G.S. datum.
2. The locations of the existing underground utilities are plotted from records obtained from the utility companies. The County shall not be responsible for the accuracy of such records and does not guarantee that the underground facilities are as shown. It is the Contractor's responsibility to field locate all underground facilities prior to excavation operations.
3. Existing water and gas mains are shown on the plans, but water and gas service laterals are not shown. The Contractor shall field locate all such service lines prior to excavation operations and shall protect them from damage. Any damage to existing facilities caused by the Contractor's operations shall be repaired at his expense.
4. When excavations approach the approximate locations of the underground facilities, the exact location shall be determined by careful probing and hand digging. Once the facility is uncovered, adequate protection shall be provided to prevent damage to the existing facilities.
5. The County reserves the right to revise the locations of the service laterals shown on these plans prior to their actual installation. No adjustment of compensation will be made for any such relocated service laterals regardless of the reason for such relocation.
6. The County has obtained a general construction storm water permit in accordance with the Clean Water Act, National Pollution Discharge Elimination System (NPDES) and State Water Board Order No. 92-08-DWQ. The Contractor shall be responsible for the preparation of the Storm Water Pollution Prevention Plan (SWPPP) as required by the NPDES regulations. The SWPPP shall be submitted to the County for approval prior to the start of construction operations. Two copies of the approved SWPPP shall be provided to the County. The Contractor shall have one copy available on the job site. The Monitoring and Reporting Program shall be conducted by the County.
7. The Contractor shall contact City of Stockton Dept. of Public Works at (209) 937-8250 for a pre-construction meeting. The Contractor shall also notify City of Stockton at least 48hrs. prior to start of construction operations.
8. City of Stockton shall inspect point of connection to City Sewer. City shall also inspect sewer mains and trench from the bottom to 1 foot above pipe and all service laterals from main to property line, excluding cleanout.
9. All improvements shall be constructed in strict accordance with the following:  
City of Stockton Standard Specifications adopted February 1, 1981, and all amendments thereto to date, and California Department of Transportation Standard Specifications (CALTRANS) dated July 1992, where applicable. All work shall be under the inspection of the respective entity. At the time the project is bid, use City of Stockton Standards currently adopted by the City Council.
10. The County shall obtain an Encroachment Permit from the City at the County's expense. The contractor shall execute this encroachment permit with the City prior to the start of work.
11. After the sanitary sewer pipe has been laid and backfilled, it shall be tested for watertightness as specified in Section 71-B, "Sanitary Sewers", of the special provisions of the project specifications.
12. Finished elevation of new frames and covers shall match surface of new A.C. overlay unless noted otherwise.

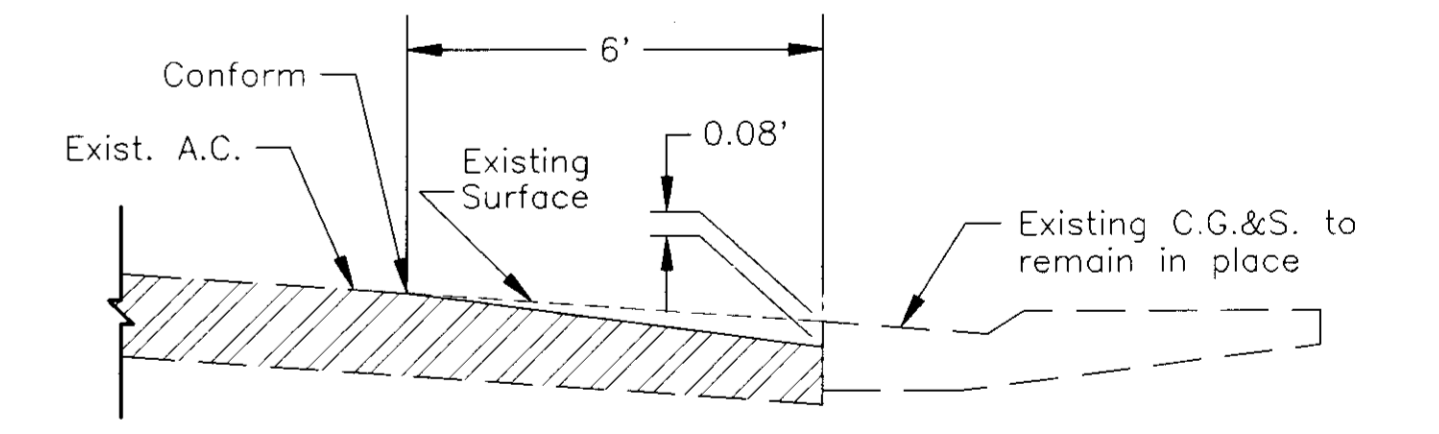
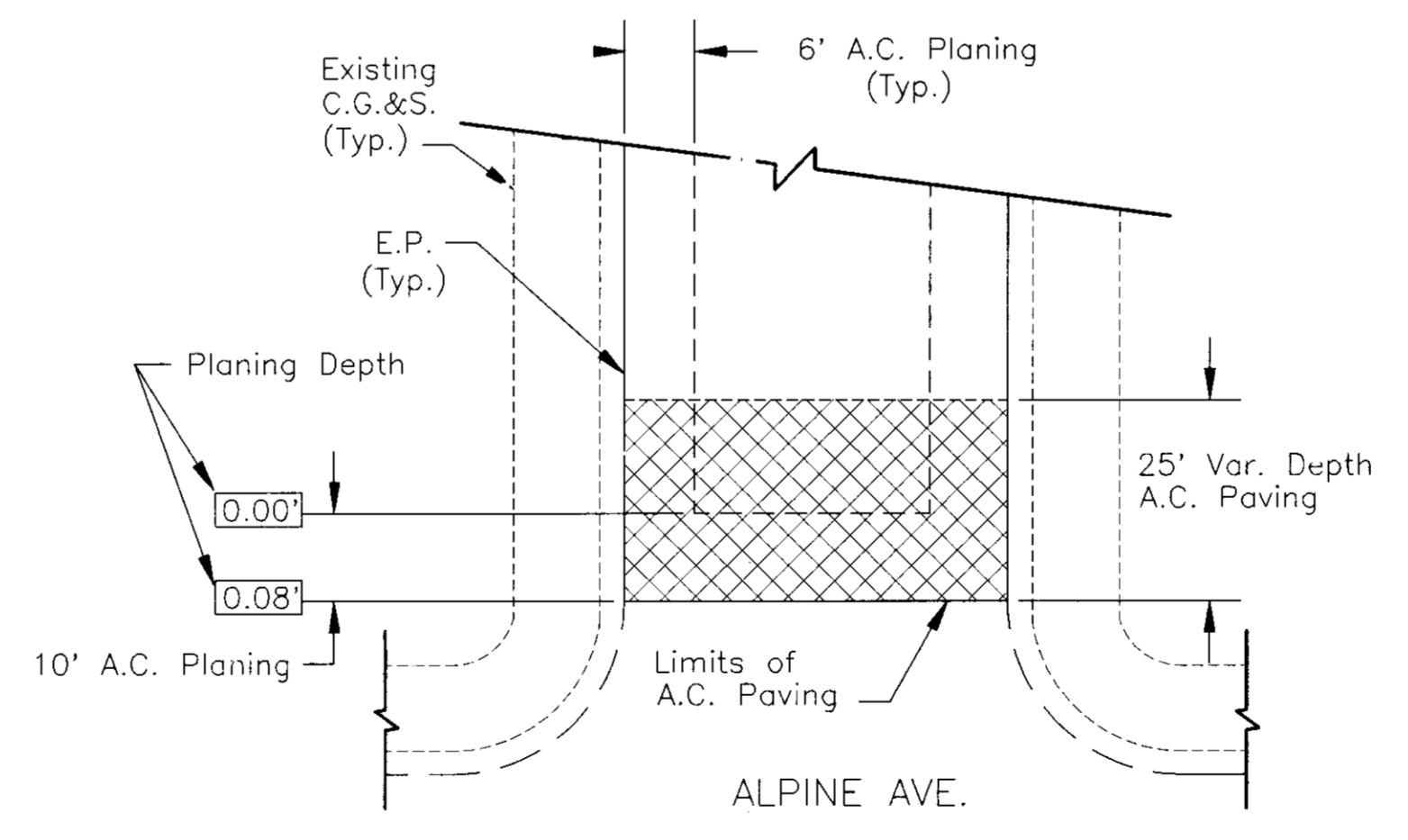
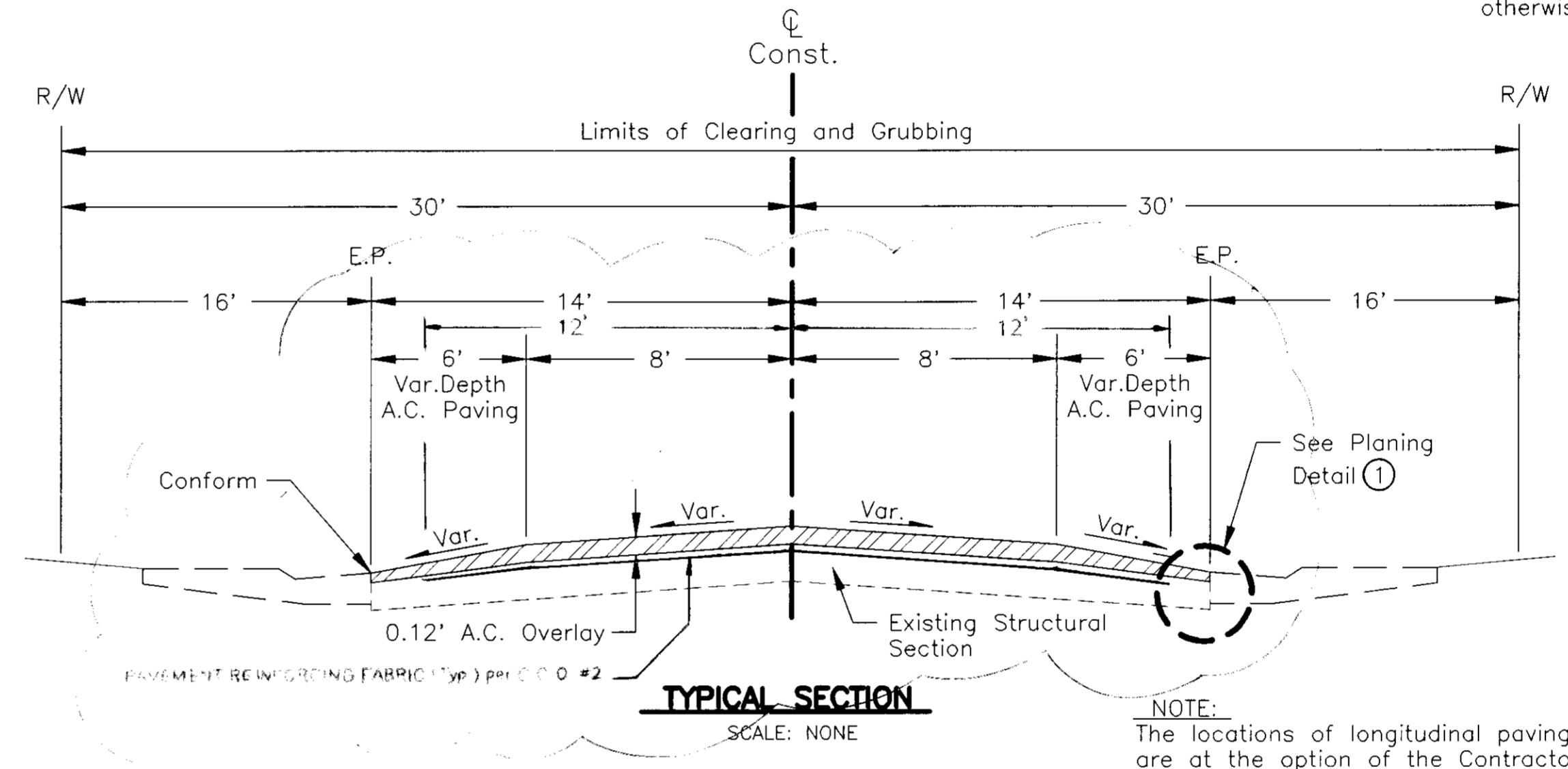


**LEGEND**

- 2" G --- Existing Gas line and size
- 6" W --- Existing Water line and size
- 24" S --- Existing Sewer line and size
- 8" TC --- Existing Telephone Cable
- ( ) --- Existing Maintenance Hole



OVERLAY SCHEDULE	
ROAD	LIMITS
FULTON STREET	STA. 10+05 to STA. 15+30
STADIUM DRIVE	STA. 9+80 to STA. 13+40
UTAH STREET	STA. 0+14 to STA. 7+55
SAN RAFAEL AVENUE	STA. 0+90 to STA. 14+05



**WEST LANE HEIGHTS / PARK SEWER PROJECT, PHASE 2**  
**GENERAL NOTES & KEY PLAN**

DEPARTMENT OF PUBLIC WORKS CITY OF STOCKTON, CALIFORNIA		
SCALE: AS NOTED	APPROVED BY: DATE: 7-3-96	SHEET NO: 2
DESIGNED BY:		OF 7 SHEETS
DRAWN BY: Tony!	<i>Manuel Dela Cruz</i>	PROJECT NO.:
CHECKED BY:	CITY ENGINEER	
RECORD DWG.:	STOCKTON, CALIF.	

COUNTY OF SAN JOAQUIN

SCALE AS NOTED

DRAWN BY	DATE	PROJECT ENGINEER	DATE	CHECKED	DATE	SUBMITTED	DATE	APPROVED	DATE
		<i>Dean St. Julian</i>	7/1/96			<i>Manuel Dela Cruz</i>	7/8/96	<i>[Signature]</i>	7/10/96

FILE NAME	DRAWER	SHEET NO.	ACAD
			west...in\phase2\plan\gnotes

SU 3105

3916.1C

Mike S  
11/20/96

COUNTY OF SAN JOAQUIN  
DEPARTMENT OF PUBLIC WORKS

STOCKTON, CALIFORNIA

PROJECT PLANS FOR

WEST LANE HEIGHTS/PARK  
SEWER PROJECT, PHASE 2

TO BE SUPPLEMENTED BY STANDARD PLANS DATED JULY 1992  
AND LATEST EDITION OF CITY OF STOCKTON STANDARD PLANS

INDEX OF SHEETS

SHEET 1	TITLE SHEET
SHEET 2	GENERAL NOTES and KEY PLAN
SHEET 3	SAN RAFAEL AVENUE: Sta. 0+00 to Sta. 14+00
SHEET 4	UTAH AVENUE: Sta. 0+00 to Sta. 7+50
SHEET 5	STADIUM DRIVE: Sta. 9+20 to Sta. 13+70
	FULTON AVENUE: Sta. 9+20 to Sta. 15+60
SHEET 6	CONSTRUCTION DETAILS
SHEET 7	SUMMARY OF QUANTITIES

Applicable Standard Plans

A10A, A10B, T1, T2, T3, T12

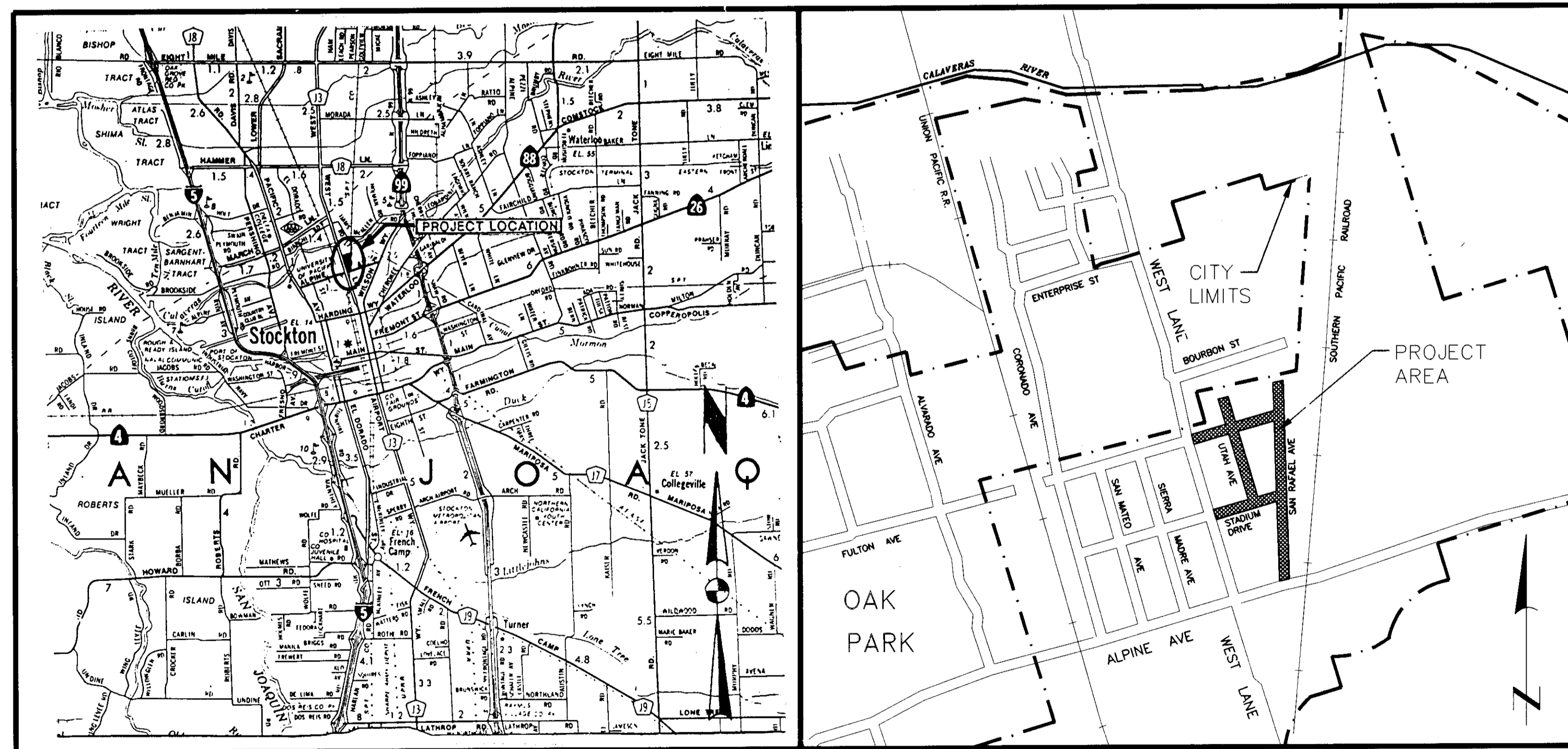
—ABBREVIATIONS—

(In addition to listings in S.P. A10A)

A.B.S.	=	Acrylonitrile-Butadiene-Styrene
C. & G.	=	Curb and Gutter
C.G. & S.	=	Curb, Gutter and Sidewalk
C.O.S.	=	City of Stockton
C.P.	=	Concrete Pipe
Dwg.	=	Drawing
∅	=	Diameter
L.H.	=	Lamp Hole
N.R.C.P.	=	Non-Reinforced Concrete Pipe
P.O.C.	=	Point of Connection
Rdwy.	=	Roadway
S.J. Co. Std.	=	San Joaquin County Standard
San.	=	Sanitary
S.-DR.	=	Side Drain
S.P.	=	Standard Plans
S.D.I.	=	Storm Drainage Inlet
T.C.	=	Telephone Cable
W.W.	=	Walk Way
X-DR.	=	Cross Drain

The Contractor shall possess a Class A, or a Class C-34 license at the time this contract is awarded.

The Contractor shall contact Underground Service Alert at (800) 642-2444 at least two working days prior to excavation operations. The Contractor shall also be responsible to contact Pacific Gas & Electric Co. prior to excavation operations on Stadium Drive and San Rafael Ave.



LOCATION MAP  
NOT TO SCALE

VICINITY MAP  
NOT TO SCALE

COUNTY OF SAN JOAQUIN

Submitted July 10, 1996

Henry M. Hirata

HENRY M. HIRATA R.C.E. 21258  
Director of Public Works



Mike S.  
11/20/96

\*NOTE:  
City Engineer's approval given as to Sanitary Sewer Utilities only.

WEST LANE HEIGHTS / PARK  
SEWER PROJECT, PHASE 2

TITLE SHEET

DEPARTMENT OF PUBLIC WORKS  
CITY OF STOCKTON, CALIFORNIA

ACCEPTABLE TO:  
Donald M. Dwyer  
ASST. DIRECTOR,  
MUNICIPAL UTILITIES  
DEPARTMENT / E.M.

DATE:  
7/2/96

SCALE: AS NOTED	APPROVED BY: DATE: 7-3-96	SHEET NO. 1
DESIGNED BY: G.C.		OF 7 SHEETS
DRAWN BY: TONY	for CITY ENGINEER*	PROJECT # J.
CHECKED BY:		
RECORD DWG.:		

SU 3106

NO.	DESCRIPTION	DRWN BY	CHK BY	APP BY	DATE

Project Engineer	Date	Senior Engineer	Date	Approval Recommended By	Date
Sean McIlwain	7/3/96	Donald M. Dwyer	7/8/96	[Signature]	7/10/96
FILE NAME	DRAWER	SHEET NO.			
Projects\West_Ln\Phase 2\Plan\Title					

3916 C