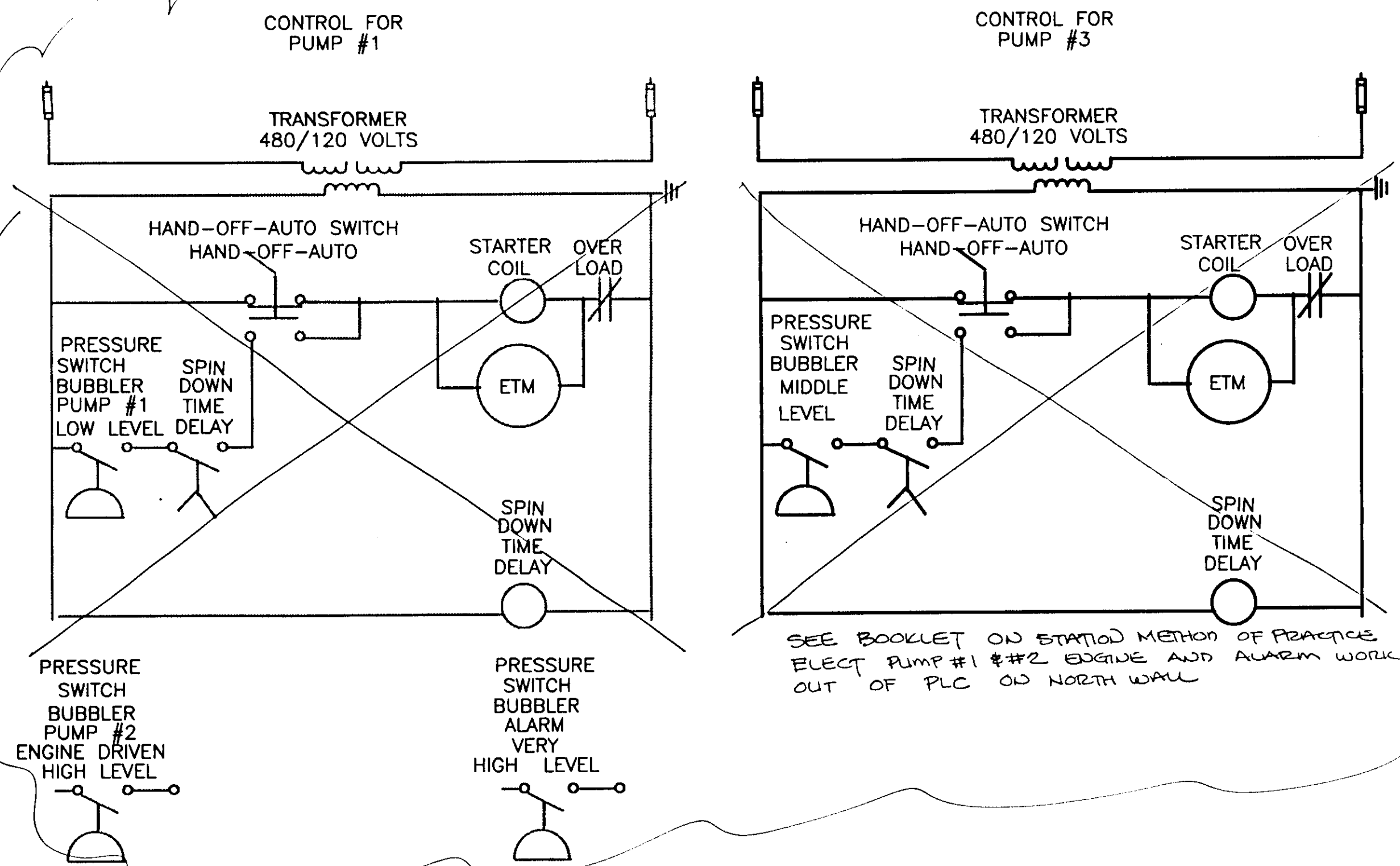
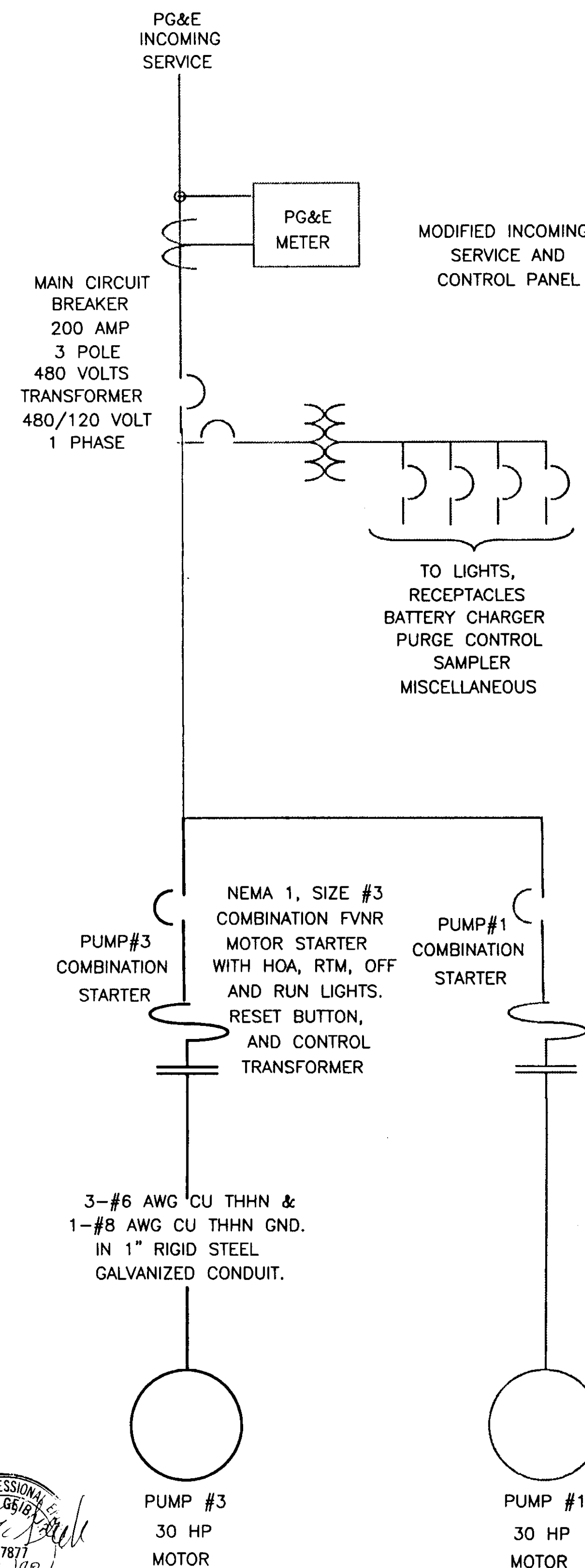


SU 3174

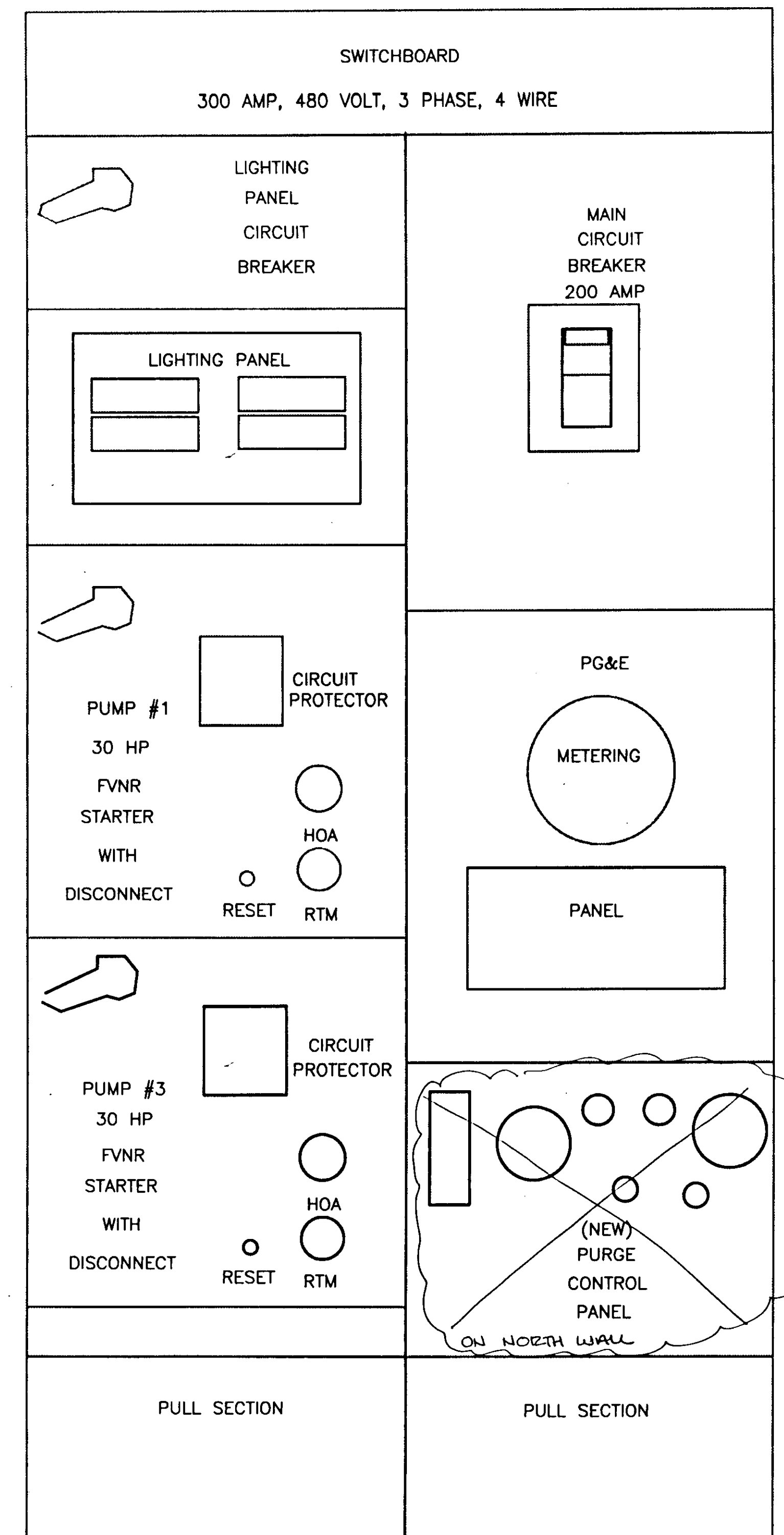
CONTROL SCHEMATIC



ELECTRICAL SCHEMATIC



MODIFIED EXISTING INCOMING SERVICE AND CONTROL PANEL



ELECTRICAL CONTRACTORS WORK REQUIRED

1. PROVIDE THE COMBINATION MOTOR STARTER AS DESCRIBED.
2. PROVIDE THE CONDUCTOR AND CONDUIT AS DESCRIBED.
3. REMOVE THE BUBBLER CONTROL FROM THE PANEL DOOR AND INSTALL ON THE DOOR OF THE PANEL BELOW THE PG&E METER PANEL.
4. INSTALL ANOTHER PRESSURE SENSOR FOR PUMP #2.
5. INSTALL THIS MOTOR STARTER IN THE SPACE BELOW THE EXISTING MOTOR STARTER.
6. INSTALL THE CONDUCTOR AND CONDUIT AS SHOWN BETWEEN THE MOTOR STARTER AND THE MOTOR. RUN TO BE UNDER THE FLOOR. SUPPORT AS REQUIRED BY THE CODE.
7. OTHER WORK AS NECESSARY TO PROVIDE A SYSTEM THAT OPERATES PROPERLY.
8. CLEAN UP OF THE SITE TO RETURN IT AT LEAST TO THE CONDITION PRIOR TO THE START OF THE WORK.

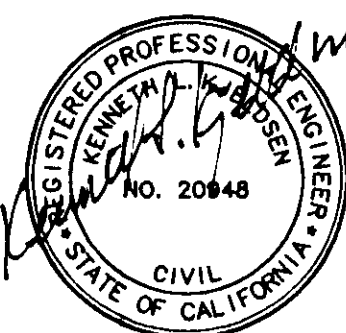
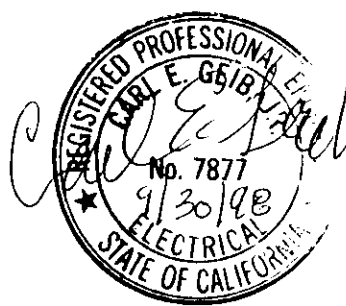
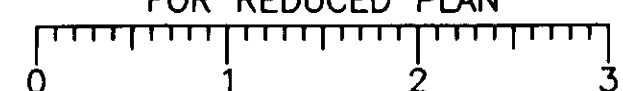
MATERIAL REQUIRED

1. QUAN 1, COMBINATION MOTOR STARTER, TO INSTALL IN THE SPACE BELOW THE EXISTING MOTOR STARTER. THE STARTER SHALL BE A DUPLICATE OF THE EXISTING MOTOR CONTROLS, INCLUDING DRAWOUT BUCKET, IF AVAILABLE; OR EQUIVALENT SQUARE D, GE, OR CH WITH DRAWOUT BUCKET IF AVAILABLE, NEMA SIZE #3, FVNR, WITH CIRCUIT PROTECTOR, HOA SWITCH, RED RUNNING LIGHT, GREEN OFF LIGHT, RUNNING TIME METER, CONTROL TRANSFORMER, AND RESET BUTTON.
2. #4 AWG, CU, THHN CONDUCTOR.
3. #6 AWG, CU, THHN CONDUCTOR.
4. #8 AWG, CU, THHN CONDUCTOR.
5. 1" RIGID STEEL GALVANIZED AND NECESSARY FITTINGS.
6. PRESSURE SENSING SWITCH FOR THIRD PUMP, SQUARE D CLASS 9012, TYPE AMWI, RANGE 0.25 TO 2.5 # DIFFERENTIAL 0.2 TO 2.0 #
7. MISCELLANEOUS EQUIPMENT NECESSARY TO COMPLETE THE JOB, PROVIDE A WORKING SYSTEM, AND MEET ALL THE APPLICABLE CODE REQUIREMENTS.

SPECIFICATIONS

1. PART 3, TITLE 24, CALIFORNIA CODE OF REGULATIONS (CALIFORNIA ELECTRICAL CODE)
2. UL OR APPROVED EQUAL TESTING ORGANIZATION.
3. CITY OF STOCKTON AND COUNTY OF SAN JOAQUIN REGULATIONS.
4. OSHA REGULATIONS.
5. SEISMIC REQUIREMENTS FOR ZONE #3.

ORIGINAL SCALE IN INCHES FOR REDUCED PLAN



RECORD DRAWING

Corrections By:
 No Changes By:
 Date: 3/11/97
 Any Person Using This Drawing Should Verify All Information By Inspecting The Site Of Work

WEST LANE HEIGHTS PUMPING PLANT EXPANSION ELECTRICAL REQUIREMENTS

DEPARTMENT OF PUBLIC WORKS
 CITY OF STOCKTON, CALIFORNIA

SCALE: NO SCALE	APPROVED BY: DATE: <u>3/20/97</u>	SHEET NO. 6
DESIGNED BY: CEG	PROJECTED BY: <u>Paul M. Smidburg</u> CITY ENGINEER STOCKTON, CALIF.	OF 6 SHTS
DRAWN BY: CEG		PROJECT NO.
CHECKED BY: KLK		
RECORD DWG:		

GEIB ENGINEERING
 7315 WOODSIDE DRIVE
 STOCKTON, CA 95207
 PHONE 209-473-2230
 FAX 209-478-0272

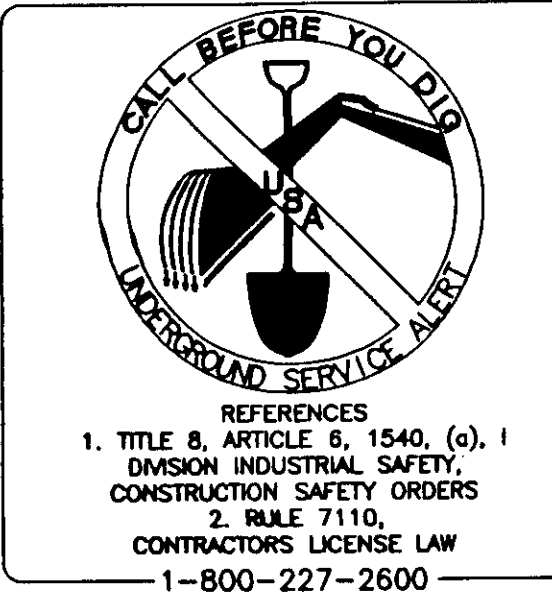
CHECKED BY: Dean S. Gibson 7/1/97 DATE
 SENIOR ENGINEER: Lang Christ 7/1/97 DATE
 APPROVAL RECOMMENDED: 7/1/97 DATE

Revision No.	Description	Date	By	App'd By
1	RECORD DRAWINGS	3/11/97	CEG	

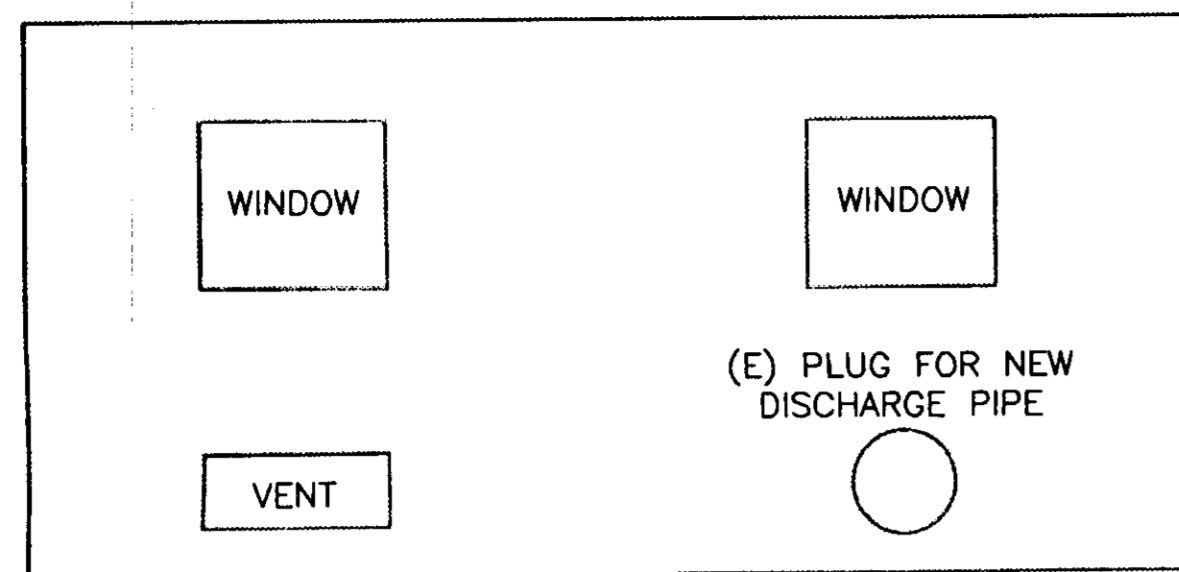
K S N INC. **KJELDEN SINNOCK NEUDECK**
 Consulting Engineers and Land Surveyors

Post Office Box 844
 1113 W. Fremont Street
 Stockton, CA 95201-0844
 (209) 946-0268

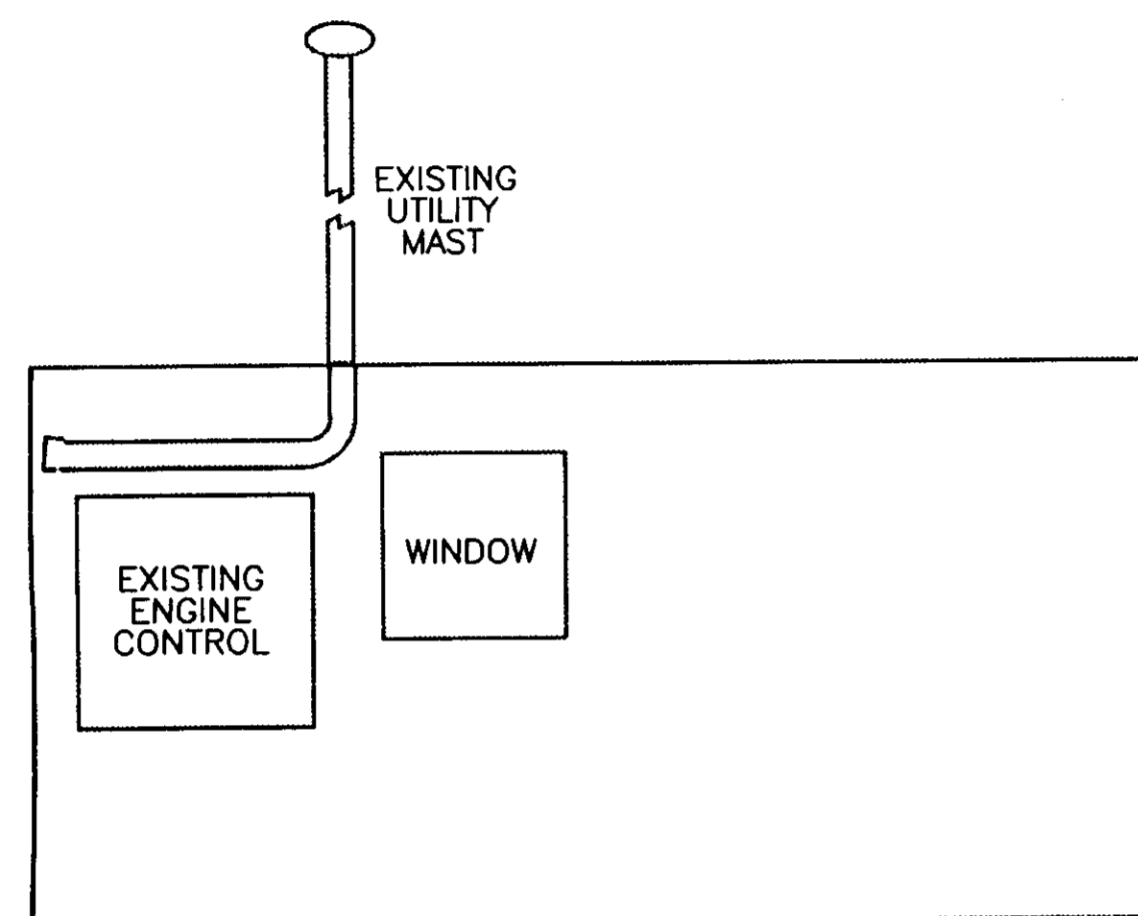
3991.5C



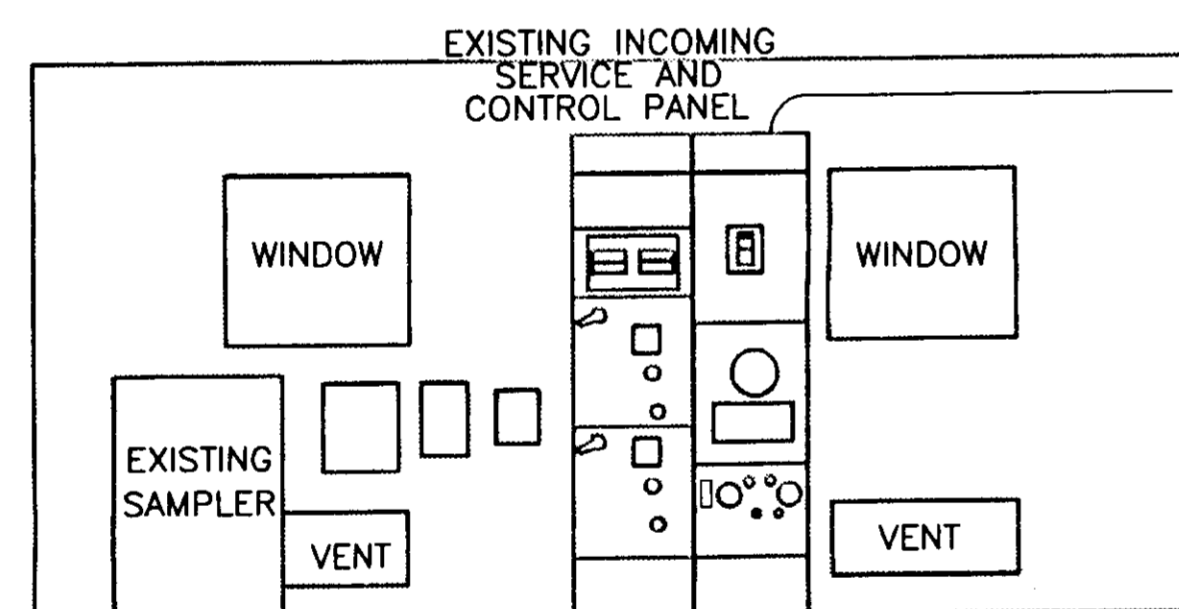
SU 3175



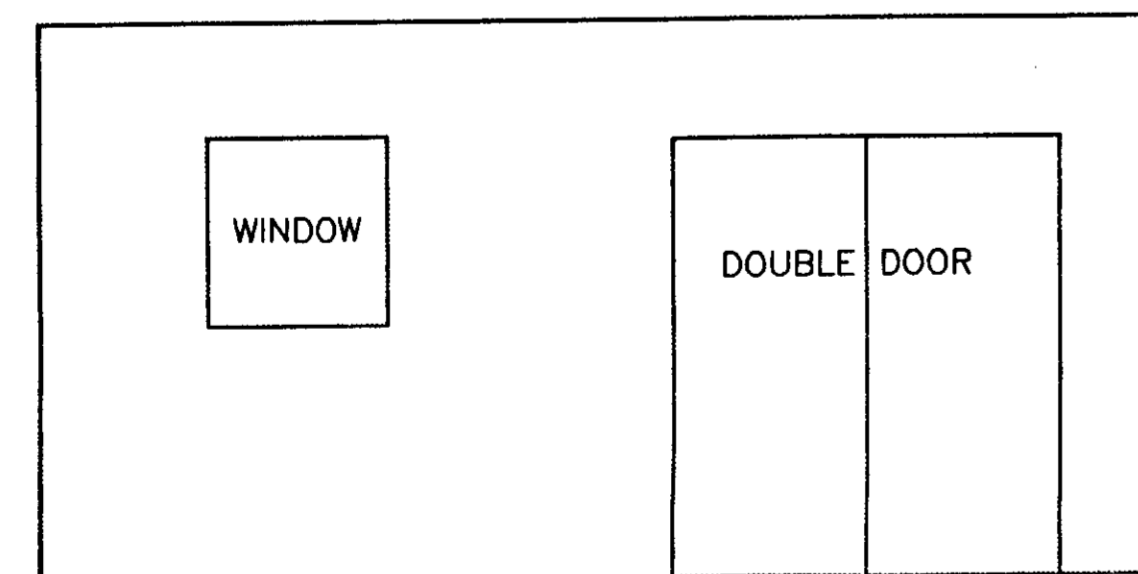
INSIDE ELEVATION NORTH WALL



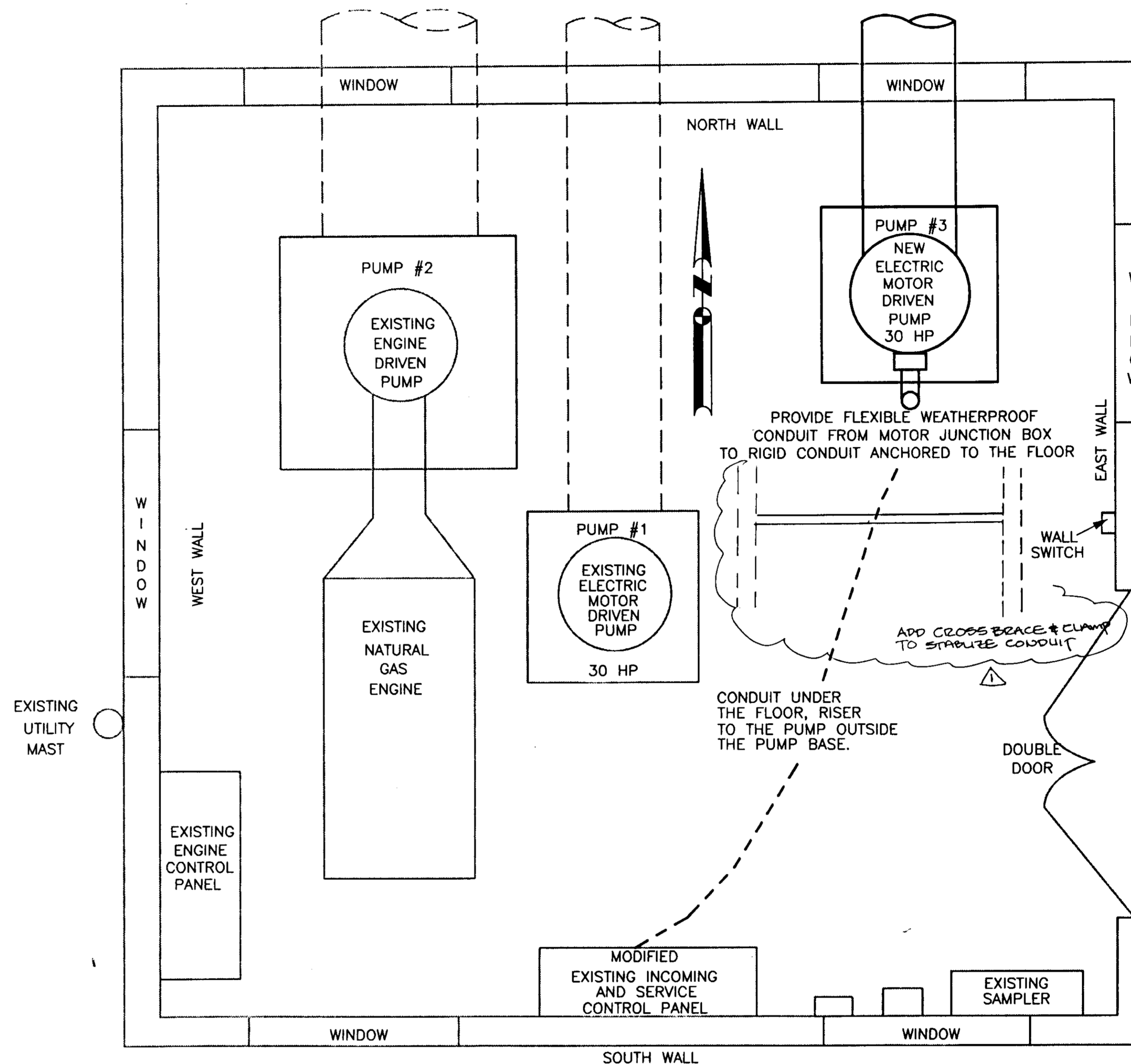
INSIDE ELEVATION WEST WALL



INSIDE ELEVATION SOUTH WALL



INSIDE ELEVATION EAST WALL



PLAN VIEW INSIDE PUMPING STATION

RECORD DRAWING

Corrections By DT/ell
 No Changes By _____
 Date 3/11/97
 Any Person Using This Drawing Should Verify
 All Information By Inspecting The Site Of Work

**WEST LANE HEIGHTS
 PUMPING PLANT EXPANSION
 ELECTRICAL LAYOUT**

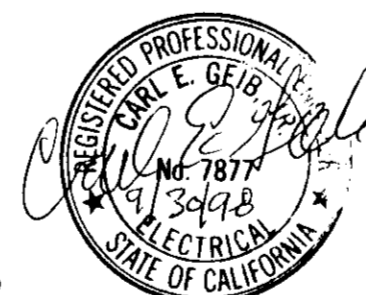
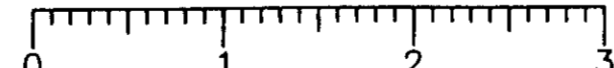
DEPARTMENT OF PUBLIC WORKS
 CITY OF STOCKTON, CALIFORNIA

SCALE: NO SCALE	APPROVED BY: DATE: <u>3/20/97</u>	SHEET NO. 5
DESIGNED BY: CEG	PROJECT NO. <u>3991.4C</u>	OF 6 SHTS
DRAWN BY: CEG		
CHECKED BY: KLK	CITY ENGINEER	
RECORD DWG:	STOCKTON, CALIF.	

Post Office Box 844
 1113 W. Fremont Street
 Stockton, CA 95201-0844
 (209) 946-0268

K S N KJELDSSEN SINNOCK NEUDECK INC.
 Consulting Engineers and Land Surveyors

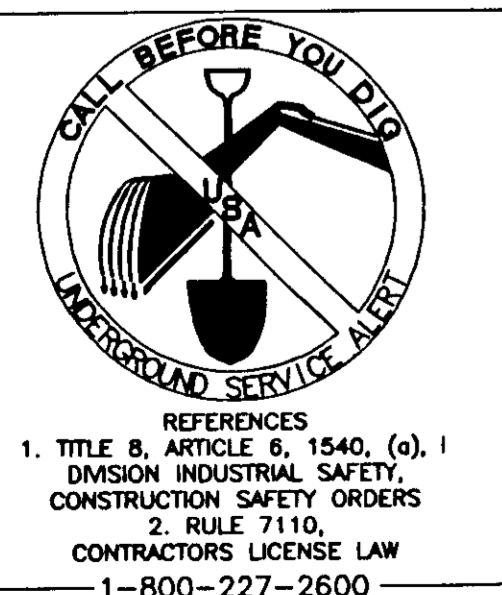
ORIGINAL SCALE IN INCHES
 FOR REDUCED PLAN



GEIB ENGINEERING
 7315 WOODSIDE DRIVE
 STOCKTON, CA 95207
 PHONE 209-473-2230
 FAX 209-478-0272

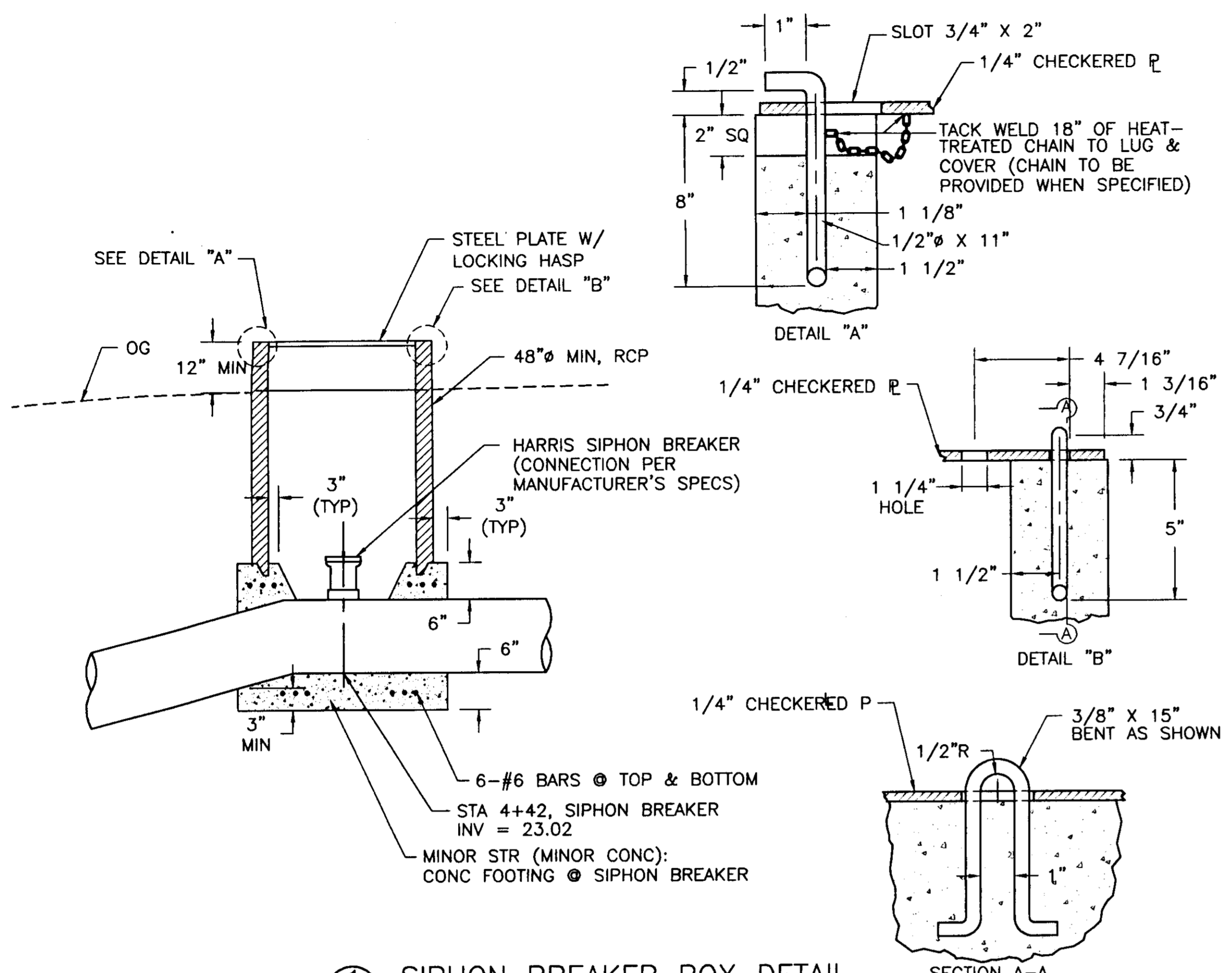
CHECKED BY: Don J. Gilson 7/1/97 DATE
 For SENIOR ENGINEER: Gary Geib 7/1/97 DATE
 APPROVAL RECOMMENDED: M. K. 7/6/97 DATE

Revision No.	Description	Date	By	App'd. By
1	RECORD DRAWINGS	2/1/97	DTT	DTT

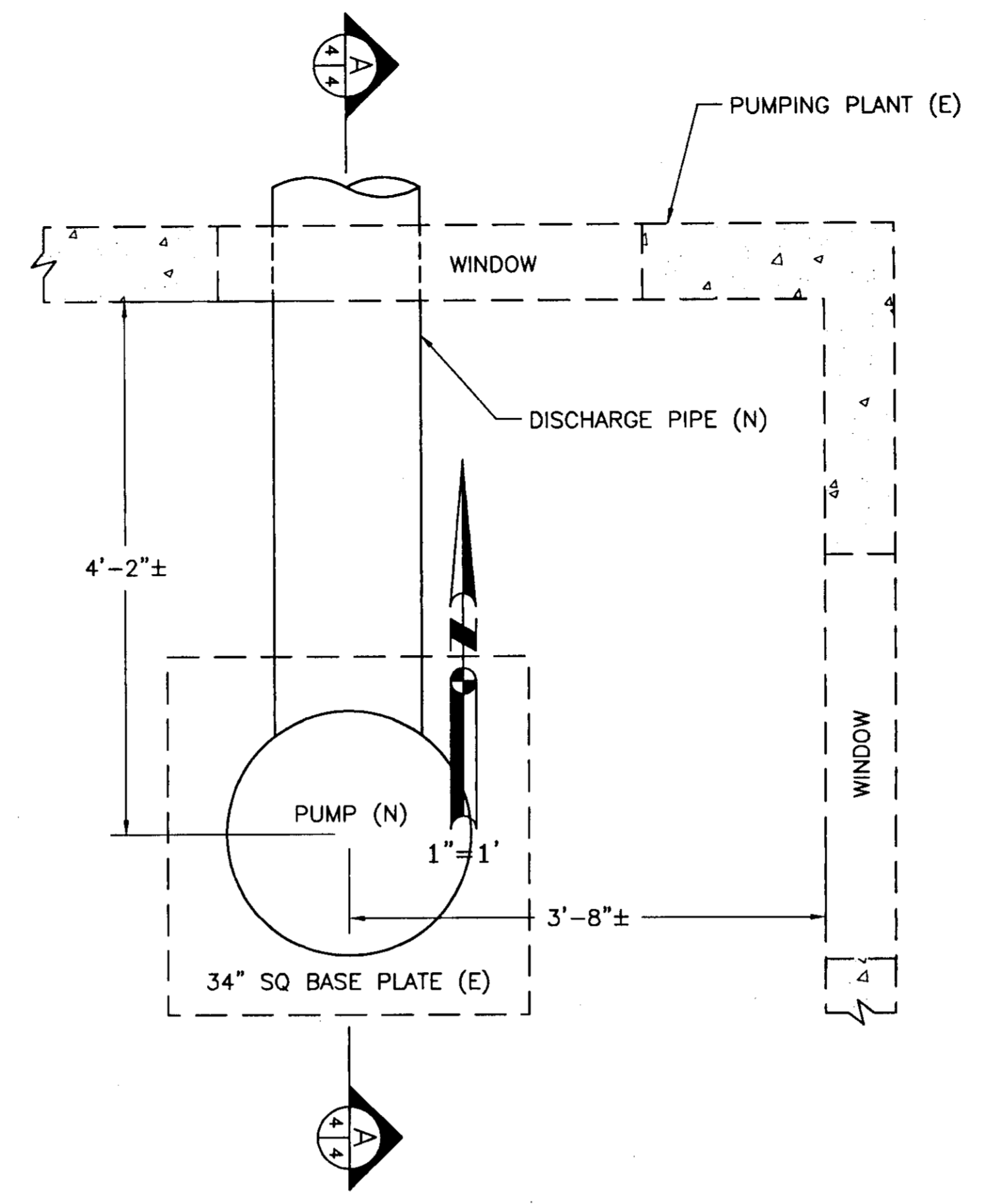


REFERENCES
 1. TITLE 8, ARTICLE 6, 1540, (c), 1
 DIVISION INDUSTRIAL SAFETY,
 CONSTRUCTION SAFETY ORDERS
 2. RULE 7110,
 CONTRACTORS LICENSE LAW
 1-800-227-2600

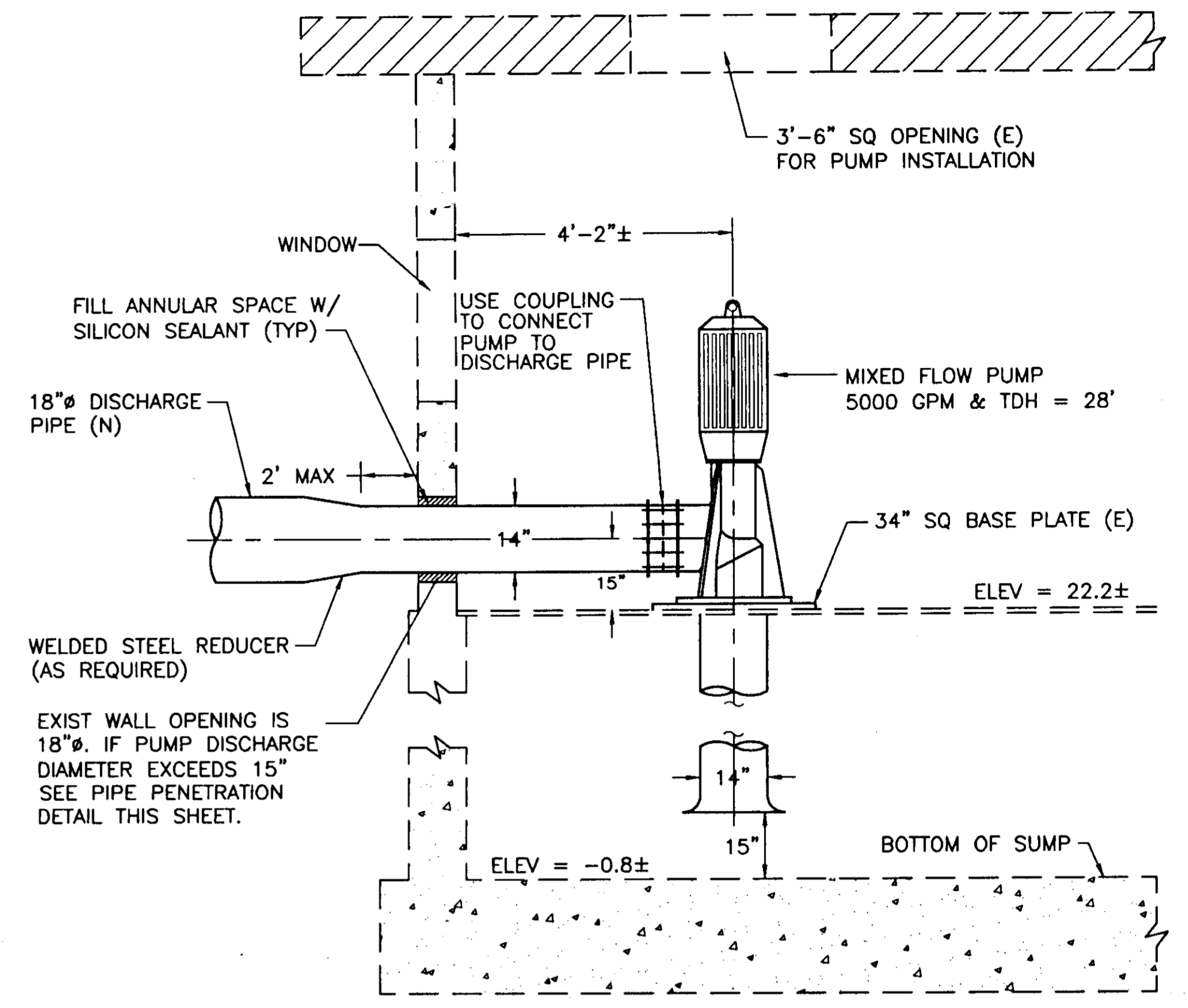
SU 3176



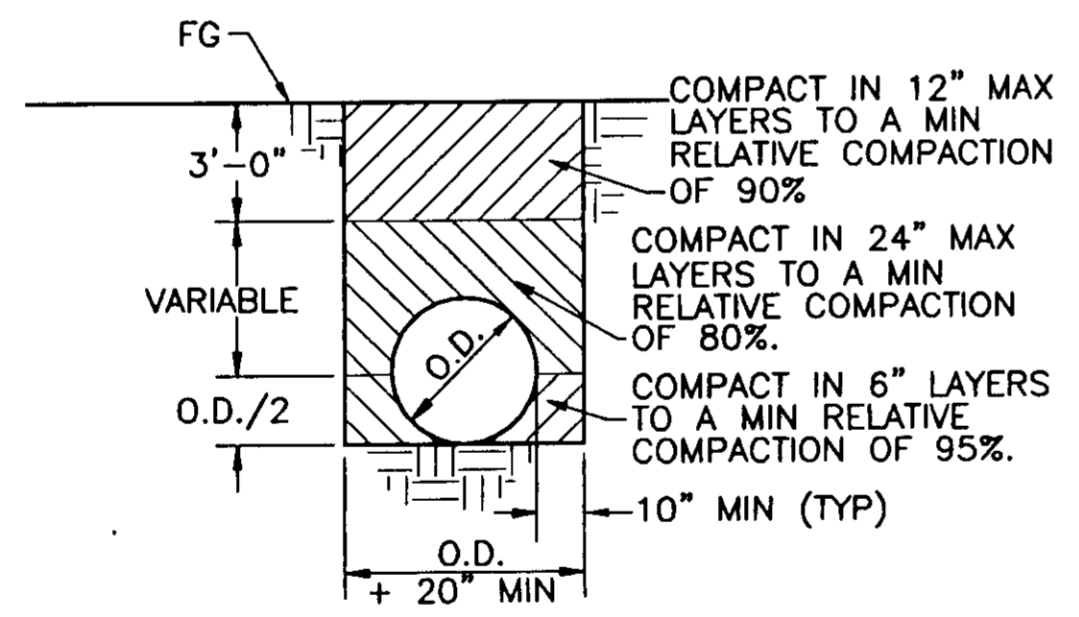
1
3/4 SIPHON BREAKER BOX DETAIL
NO SCALE



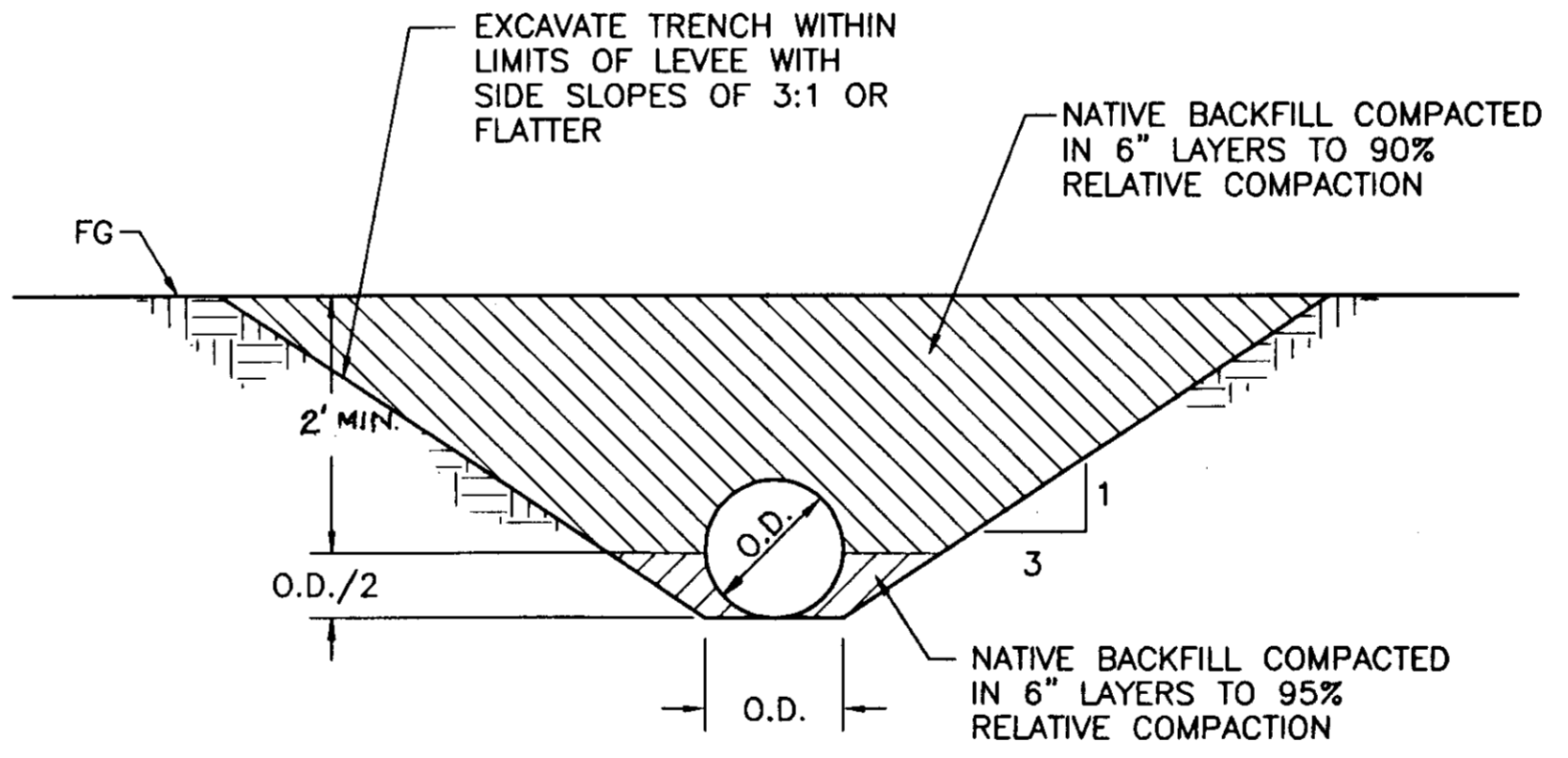
2
3/4 NEW PUMP LOCATION DETAIL
SCALE: 1" = 1'



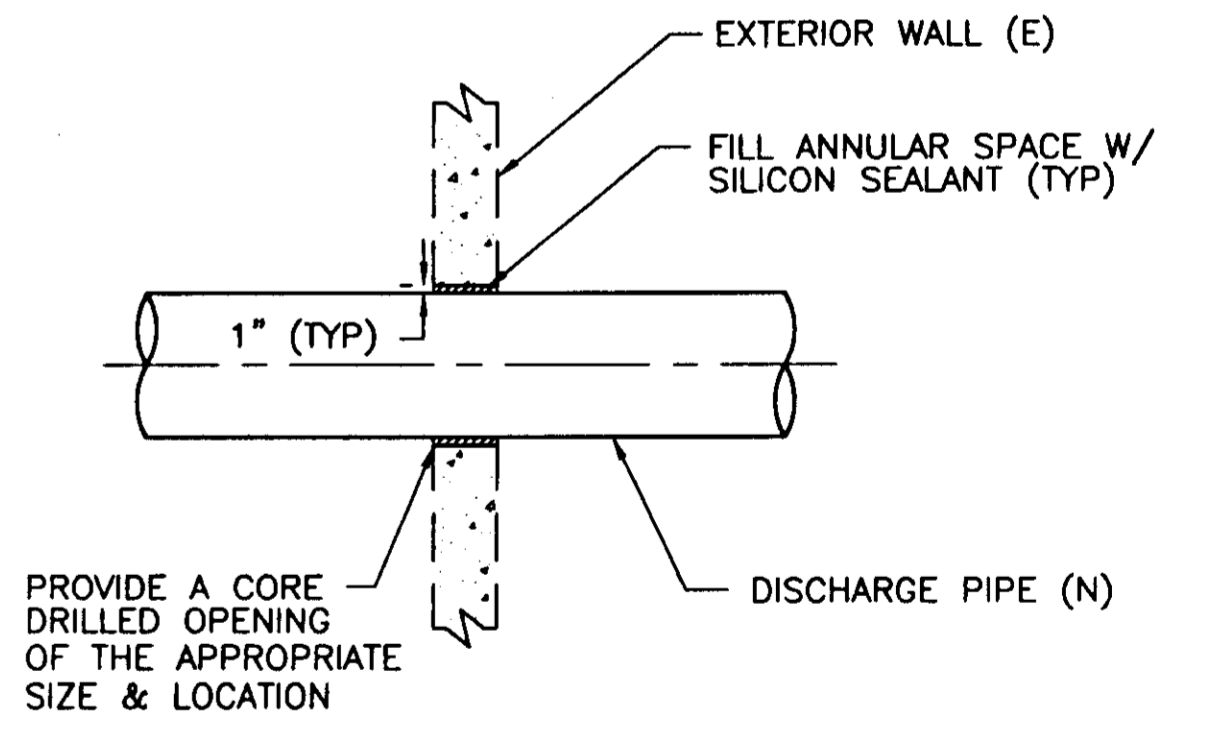
NOTE: VERIFY ALL PUMP & DISCHARGE PIPE INFORMATION WITH PUMP MANUFACTURER.
A
4/4 SECTION
NO SCALE



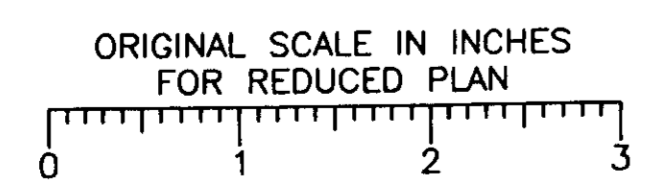
B
3/4 TYPICAL TRENCH SECTION
(DRAINAGE STRUCTURE TO STA 3+90)
NO SCALE



C
3/4 TYPICAL TRENCH SECTION AT LEVEE
(STA 3+90 TO PUMPING PLANT)
NO SCALE



3
4/4 PIPE PENETRATION
NO SCALE



RECORD DRAWING
Corrections By: *DTB*
No Changes By: *DTB*
Date: *3/11/98*
Any Person Using This Drawing Should Verify All Information By Inspecting The Site Of Work

CHECKED BY: *Don & Hilson* 7/1/97 DATE
For SENIOR ENGINEER: *Long Christ* 7/1/97 DATE
APPROVAL RECOMMENDED: *M.A.* 7/2/97 DATE



Revision No.	Description	Date	By	App'd By

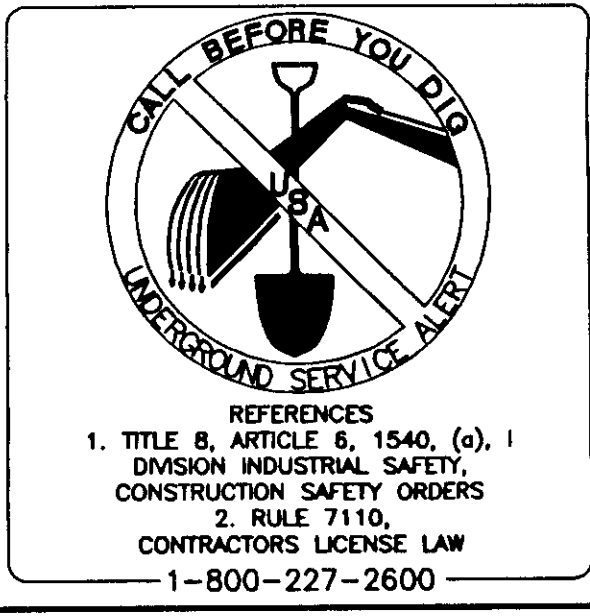
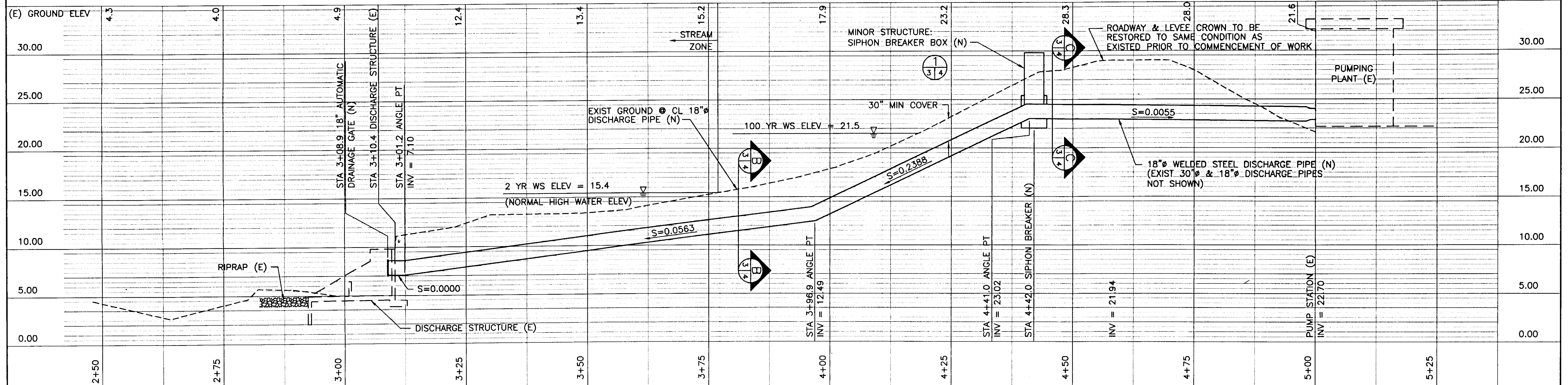
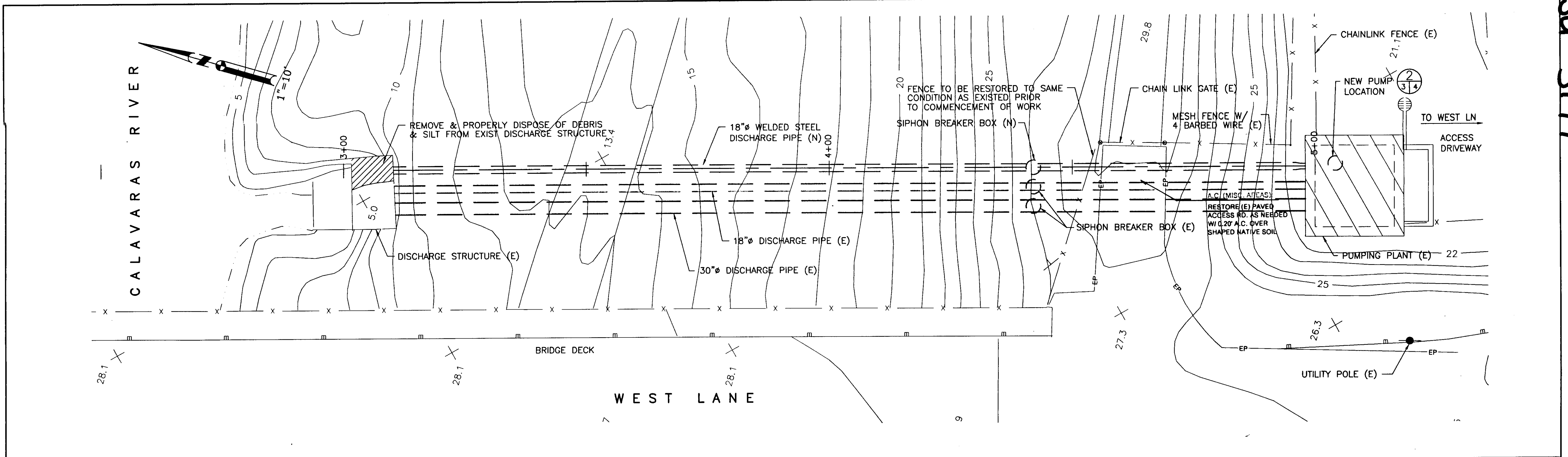
K S N KJELDEN SINNOCK NEUDECK
INC. Consulting Engineers and Land Surveyors

Post Office Box 844
1113 W. Fremont Street
Stockton, CA 95201-0844
(209) 946-0268

WEST LANE HEIGHTS PUMPING PLANT EXPANSION			
MISCELLANEOUS DETAILS			
DEPARTMENT OF PUBLIC WORKS CITY OF STOCKTON, CALIFORNIA			
SCALE: AS SHOWN	APPROVED BY: DATE: <i>[Signature]</i>	SHEET NO. 4	
DESIGNED BY: MRC	<i>[Signature]</i> CITY ENGINEER STOCKTON, CALIF.	OF 6 SHTS	
DRAWN BY: JSW		PROJECT NO.	
CHECKED BY: KLK			
RECORD DWG:			

3991.3C

SU 3177



ORIGINAL SCALE IN INCHES FOR REDUCED PLAN

CHECKED BY: Dean J. Belina 7/1/17
 DATE
 SENIOR ENGINEER: Randy Cudith 3/1/27
 DATE
 APPROVAL RECOMMENDED: [Signature] 7/5/17
 DATE



Revision No.	Description	Date	By	App'd By

K S N KJELDEN SINNOCK NEUDECK INC.
 Consulting Engineers and Land Surveyors

Post Office Box 844
 1113 W. Fremont Street
 Stockton, CA 95201-0844
 (209) 946-0268

RECORD DRAWING

Corrections By: [Signature]
 No Changes By: [Signature]
 Date: 3/11/20
 Any Person Using This Drawing Should Verify All Information By Inspecting The Site Of Work

WEST LANE HEIGHTS PUMPING PLANT EXPANSION
18" DISCHARGE PIPE

DEPARTMENT OF PUBLIC WORKS
 CITY OF STOCKTON, CALIFORNIA

SCALE: H: 1"=10', V: 1"=5'

DESIGNED BY: MRC
 DRAWN BY: JSW
 CHECKED BY: KLK
 RECORD DWG:

APPROVED BY: [Signature] DATE: 7/1/17
 CITY ENGINEER
 STOCKTON, CALIF.

SHEET NO. 3 OF 6 SHTS
 PROJECT NO.

3991.2C

3178

ABBREVIATION DESCRIPTION

Table with 2 columns: ABBREVIATION, DESCRIPTION. Lists various engineering symbols and their meanings, such as AREA, ABANDON, ADJUST, etc.

ABBREVIATION DESCRIPTION

Table with 2 columns: ABBREVIATION, DESCRIPTION. Lists various engineering symbols and their meanings, such as INVERT ELEVATION, INCH, INTERSECTION, etc.

ABBREVIATION DESCRIPTION

Table with 2 columns: ABBREVIATION, DESCRIPTION. Lists various engineering symbols and their meanings, such as SQUARE FOOT, SEARCH FOUND NOTHING, SUBGRADE, etc.

GENERAL NOTES

1. ALL NEW IMPROVEMENTS SHALL BE IN ACCORDANCE WITH THE REQUIREMENTS OF THESE PLANS AND SPECIFICATIONS... 2. THE INTENT IS THAT THESE PLANS REQUIRE ALL LABOR AND MATERIALS... 3. THE TYPES, LOCATION, SIZES AND/OR DEPTHS OF EXISTING UNDERGROUND UTILITIES AS SHOWN ON THESE PLANS WERE OBTAINED FROM "OUTSIDE SOURCES"...

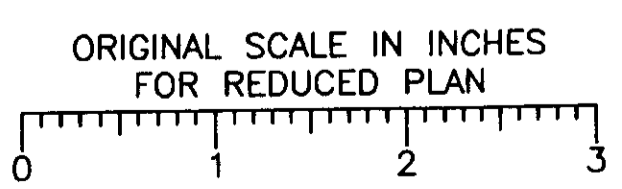
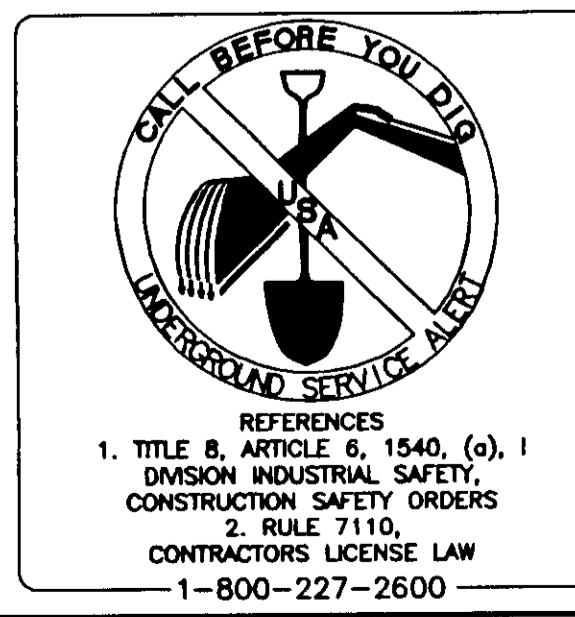
SYMBOL DESCRIPTION

Table with 2 columns: SYMBOL, DESCRIPTION. Lists symbols for WORK POINT OR BENCH MARK, DETAIL INDICATOR, REVISION, SECTION INDICATOR, and NOTE INDICATOR.

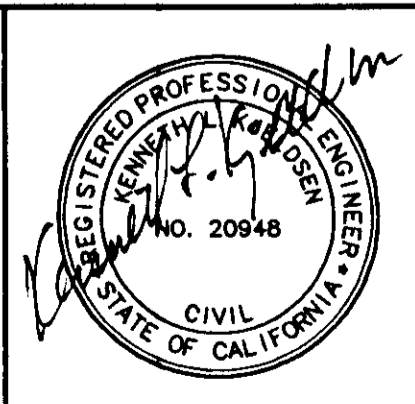
NEW EXISTING DESCRIPTION

Table with 3 columns: NEW, EXISTING, DESCRIPTION. Lists symbols for GATE, FENCE, GUARD RAIL / BARRICADE, BUILDING, LIGHT, MAINTENANCEHOLE, UTILITY POLE, POST / BOLLARD, SIGN, CONTROL MONUMENT, SPOT ELEVATION, UTILITY BOX, STORM DRAIN LINE, SANITARY SEWER LINE, WATER LINE, GAS LINE, COMMUNICATION LINE, ELECTRICAL LINE, CONDUIT, SWALE / DITCH.

WEST LANE HEIGHTS PUMPING PLANT EXPANSION LEGEND & GENERAL NOTES. DEPARTMENT OF PUBLIC WORKS CITY OF STOCKTON, CALIFORNIA. SCALE: NO SCALE. APPROVED BY: DATE: 4/20/97. SHEET NO. 2 OF 6 SHTS. PROJECT NO. 3991.1C



CHECKED BY: Sean J. Gibson 7/1/97 DATE. SENIOR ENGINEER: Gary V. Smith 7/1/97 DATE. APPROVAL RECOMMENDED: JPK 7/1/97 DATE.



NOTE: CONTRACTOR SHALL ABIDE BY THE NATIONWIDE PERMIT NO. 12 DOCUMENTATION CONTAINED AS AN APPENDIX WITHIN THE SPECIFICATIONS.

RECORD DRAWING. Corrections By: [Signature]. No Changes By: [Signature]. Date: 3/11/97. Any Person Using This Drawing Should Verify Information By Inspecting The Site Of Work.

KJELDEN S SINNOCK N NEUDECK INC. Consulting Engineers and Land Surveyors. Post Office Box 844 1113 W. Fremont Street Stockton, CA 95201-0844 (209) 946-0268

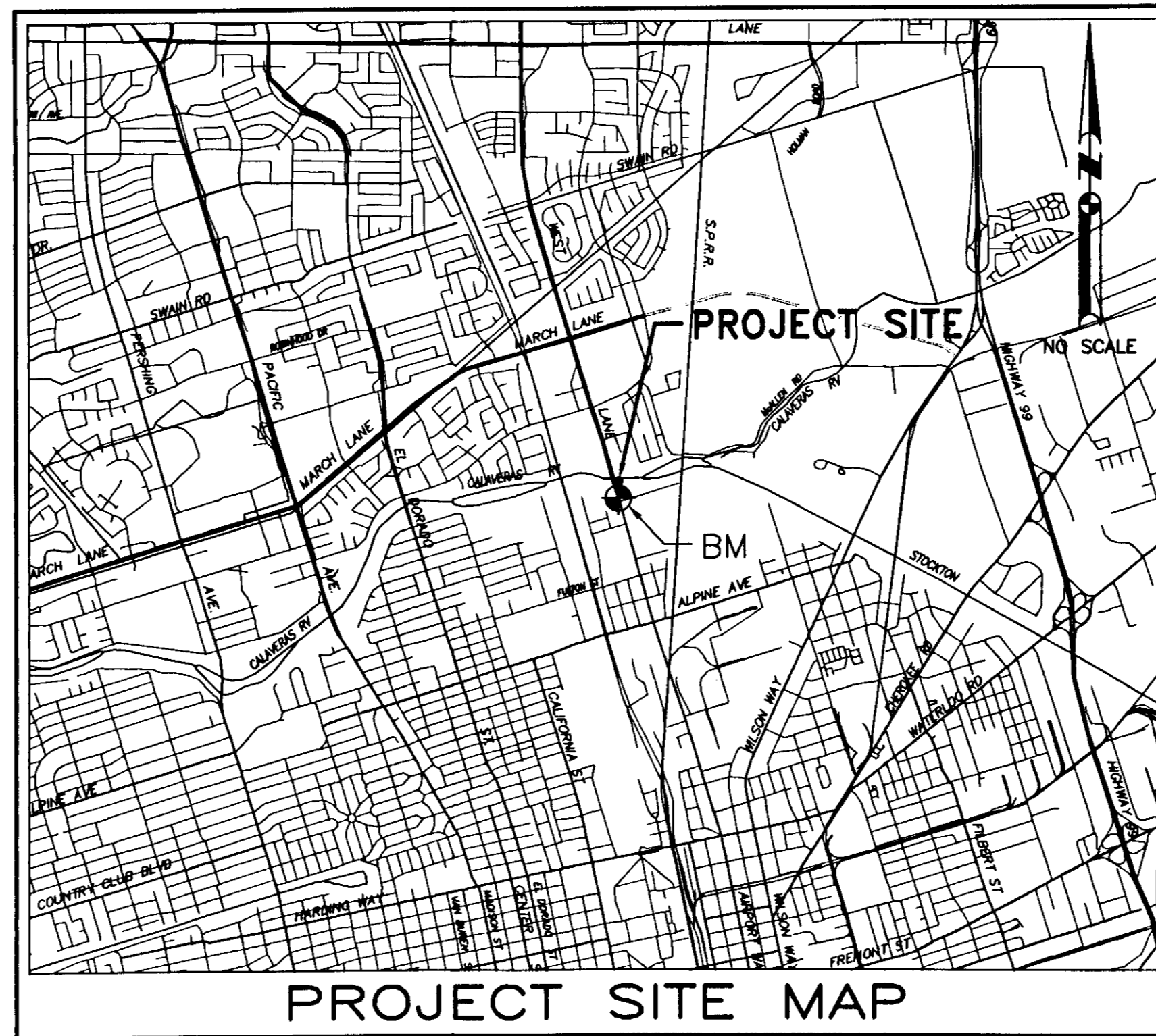
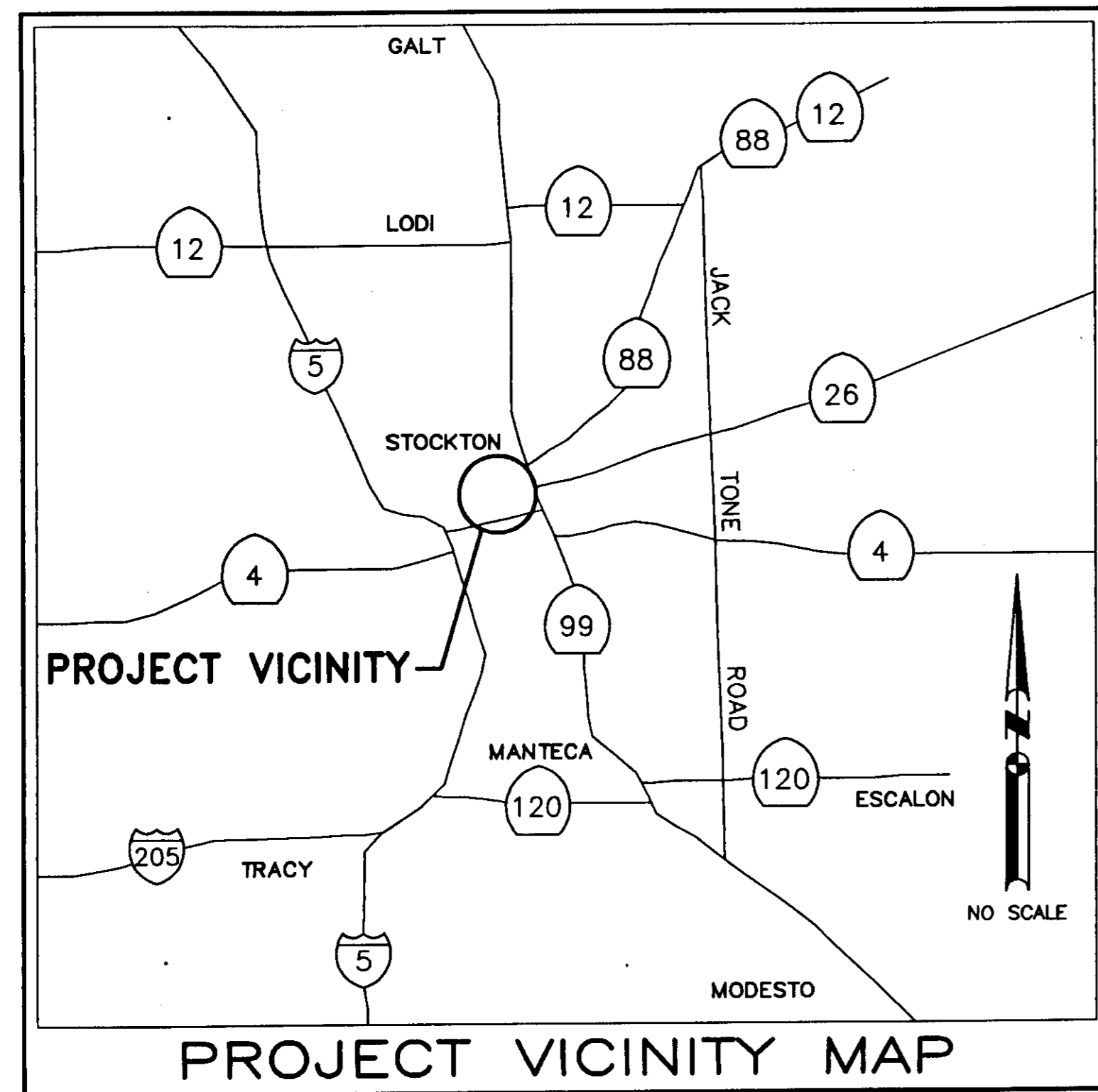
SU 3179

COUNTY OF SAN JOAQUIN DEPARTMENT OF PUBLIC WORKS

WEST LANE HEIGHTS PUMPING PLANT EXPANSION

CITY OF STOCKTON
COUNTY OF SAN JOAQUIN

TO BE SUPPLEMENTED BY STANDARD PLANS DATED JULY 1992
AND LATEST EDITION OF CITY OF STOCKTON STANDARD PLANS



SHEET NO.	DESCRIPTION
1	TITLE SHEET
2	LEGEND & GENERAL NOTES
3	18"Ø DISCHARGE PIPE
4	MISCELLANEOUS DETAILS
5	ELECTRICAL LAYOUT
6	ELECTRICAL REQUIREMENTS

INDEX

RECORD DRAWING

Corrections By: DTB
 No Changes By: _____
 Date: 2/11/97
 Any Person Using This Drawing Should Verify
 All Information By Inspecting The Site Of Work

COUNTY OF SAN JOAQUIN
 SUBMITTED July 3, 1997
Henry M. Mirata
 HENRY M. MIRATA, RCE 21258
 DIRECTOR OF PUBLIC WORKS

ACCEPTABLE TO:
Donald M. Dege 6/20/97
 ASST. DIRECTOR OF MUNICIPAL UTILITIES/EM DATE

**WEST LANE HEIGHTS
PUMPING PLANT EXPANSION
TITLE SHEET**

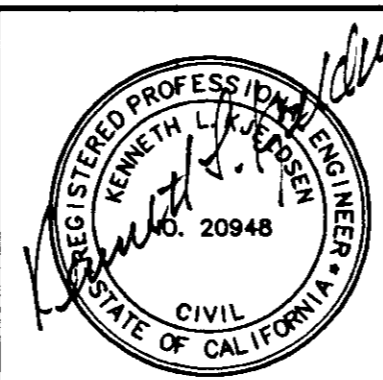
DEPARTMENT OF PUBLIC WORKS
CITY OF STOCKTON, CALIFORNIA

SCALE: NO SCALE	APPROVED BY: DATE: <u>6/30/97</u>	SHEET NO. 1	OF 6 SHTS
DESIGNED BY: MRC	<u>Paul M. Sauerbough</u> CITY ENGINEER STOCKTON, CALIF.	PROJECT NO.	
DRAWN BY: JSW			
CHECKED BY: KLK			
RECORD DWG:			

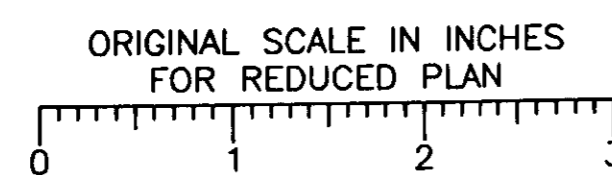
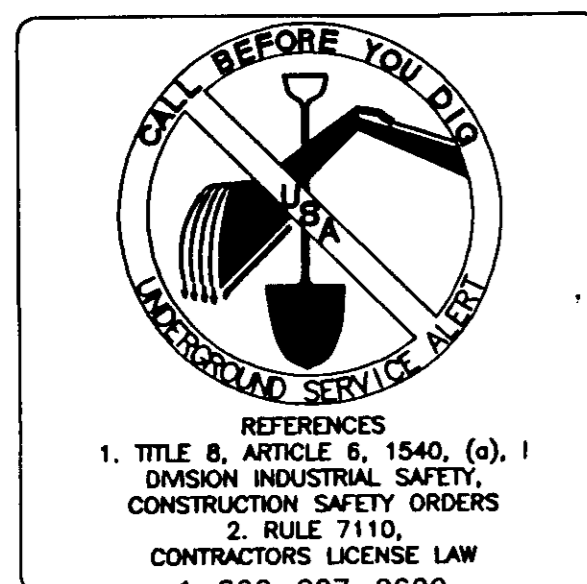
Post Office Box 844,
 1113 W. Fremont Street
 Stockton, CA 95201-0844
 (209) 946-0268

K S N
**KJELDEN
SINNOCK
NEUDECK**
 INC. Consulting Engineers
 and Land Surveyors

CHECKED BY: Dean S. Wilson 7/1/97 DATE
 For SENIOR ENGINEER: Larry V. Smith 7/1/97 DATE
 APPROVAL RECOMMENDED: KLK 7/3/97 DATE



Revision No.	Description	Date	By	App'd By
1	RECORD DRAWINGS	6/11/97	DTB	DTB



3991C