

SU 3678

UNAUTHORIZED CHANGES AND USES:  
THE ENGINEER PREPARING THESE PLANS WILL NOT BE RESPONSIBLE FOR, OR LIABLE FOR, UNAUTHORIZED CHANGES TO OR USES OF THESE PLANS. ALL CHANGES TO THE PLANS MUST BE IN WRITING AND MUST BE APPROVED BY THE PREPARER OF THESE PLANS.

REVISIONS			
NO.	DESCRIPTION	DATE	BY

**WONG ENGINEERS, INC.**  
PLANNING ENGINEERING SURVEYING  
4578 FEATHER RIVER DRIVE, SUITE A  
STOCKTON, CALIFORNIA  
(209)476-0011

DATE 7-8-2002  
R.C.E. 14269

JOB NO.	3338
DATE	APRIL 2002
SCALE	AS SHOWN
DRAWN	SE
DESIGN	ZCW
CHECKED	ZCW

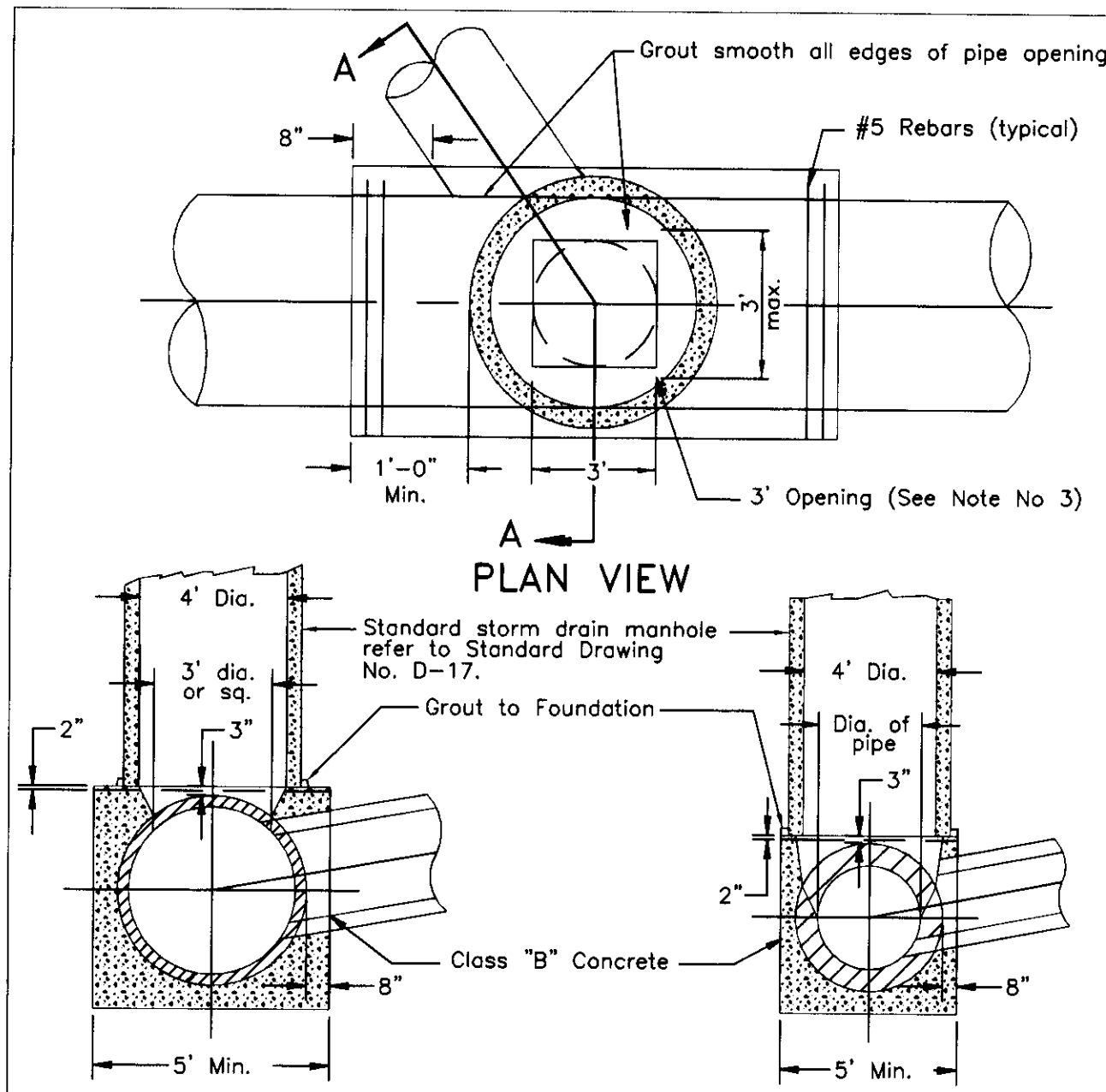
TRACT 3172  
MICHAEL ESTATES

SAN JOAQUIN COUNTY,  
CALIFORNIA

**DETAIL SHEET**

SHEET  
6  
OF  
SIX  
FILE

3338DETAIL 6.DWG  
PLOTTED 7-8-2002

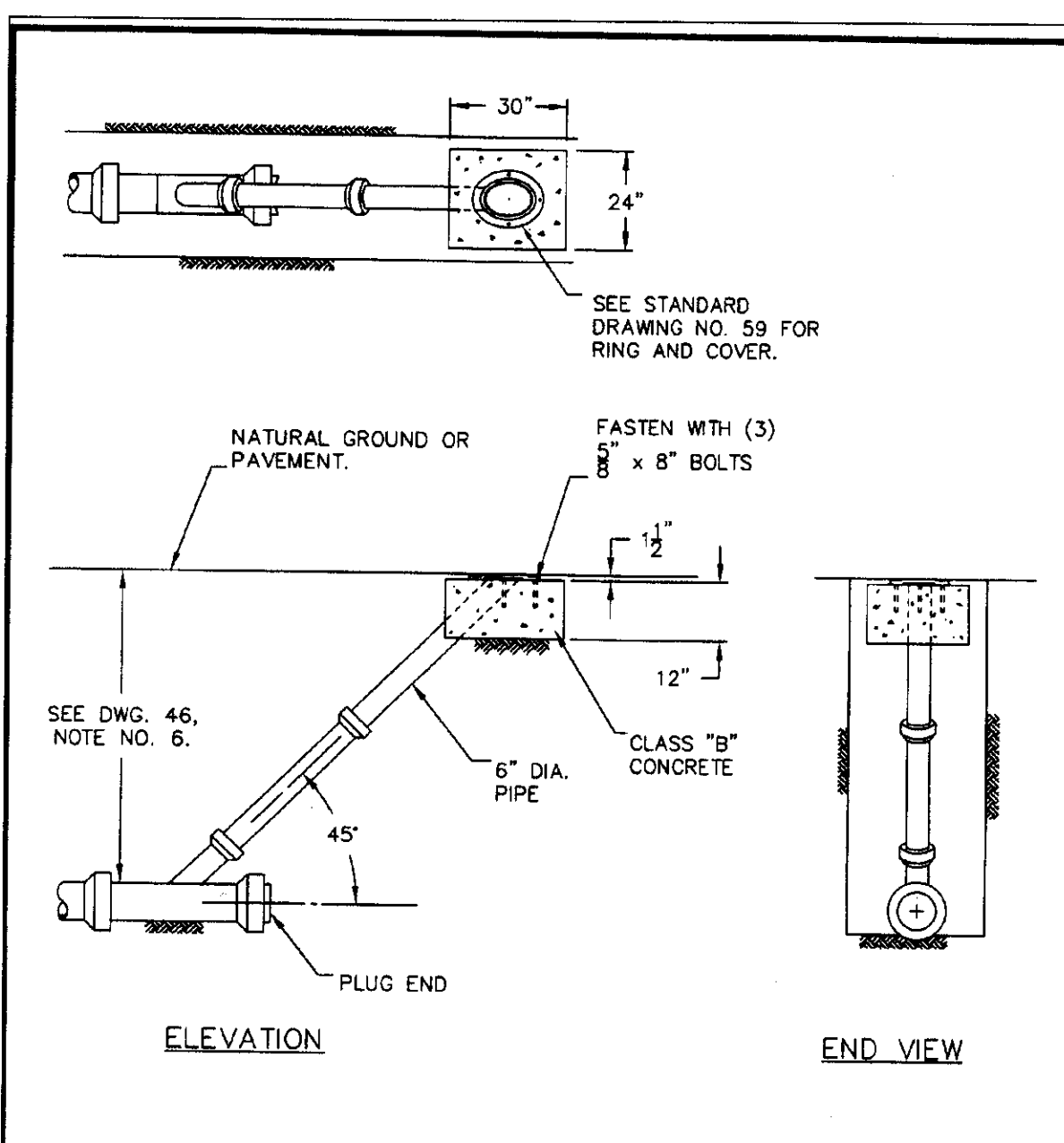


**SADDLE-TYPE MANHOLE FOR PIPE 24" DIA. AND LARGER**

NOTES:

- The foundation shall be a minimum of 5' for 44" O.D. pipe and smaller.
- For pipe larger than 44" O.D., the foundation shall extend a minimum of 8' beyond each side of the pipe.
- Opening to be 3" long x (I.D. of pipe) wide, up to 36" I.D. pipe. For pipes larger than 36" I.D., opening to be 36" diameter or square.

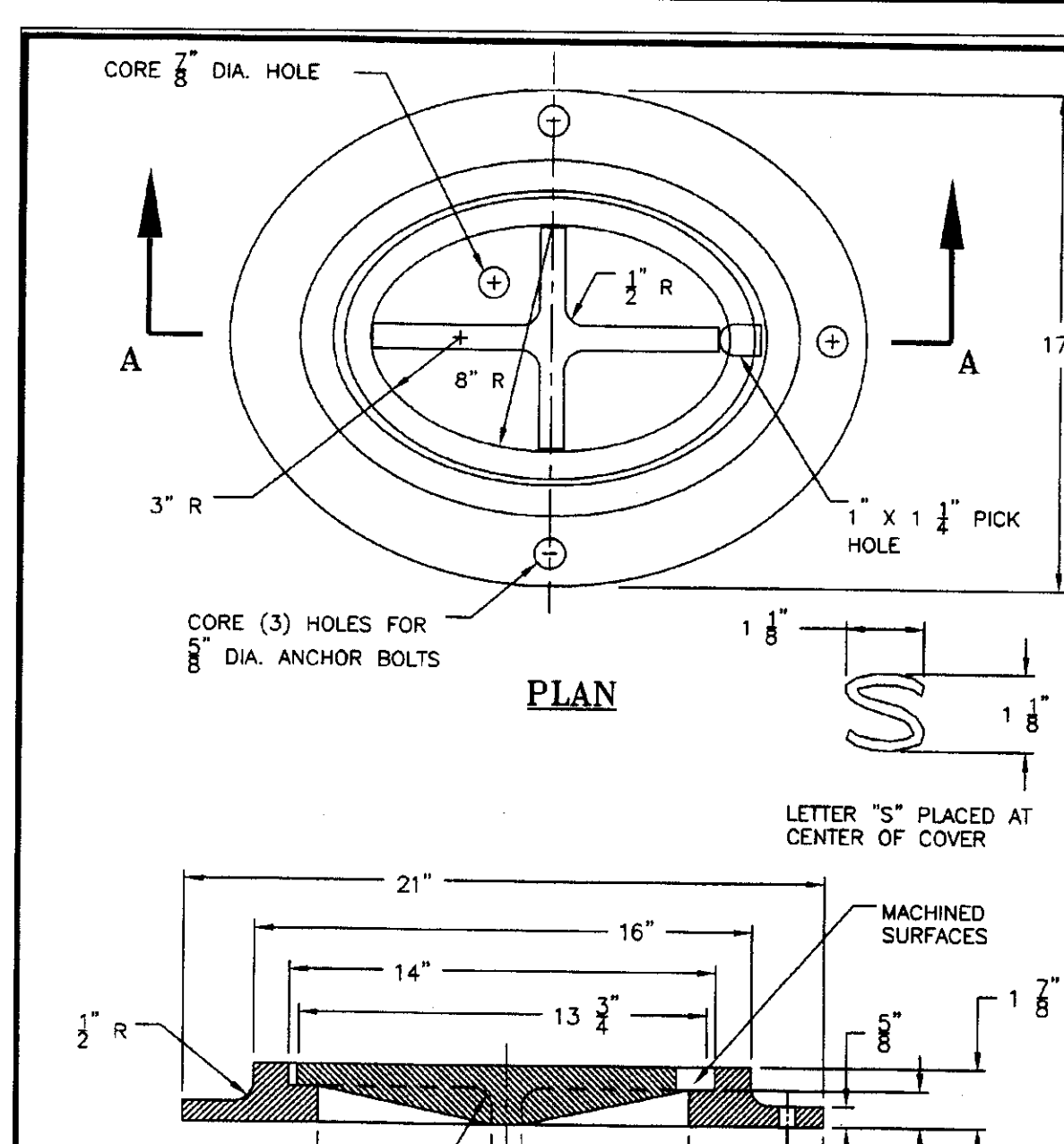
REV. NO.	REV. DATE	REV. BY	APPROVED BY CITY ENGINEER
5	6/1/2000	HLB/RLH	Finbow J. O'Keefe
DIGITIZED	1/1/92		DATE: 01/09/02
DWG. BY	RC	SCALE	DRAWING NO.
CK. BY	NONE		58



**LAMPHOLE RING & COVER**

NOTE: LAMPHOLE MAY BE INSTALLED AT END OF SANITARY SEWER LINES ONLY WITH APPROVAL FROM THE CITY ENGINEER.

REV. NO.	REV. DATE	REV. BY	APPROVED BY CITY ENGINEER
5	6/1/2000	HLB/RLH	Finbow J. O'Keefe
DIGITIZED	1/1/92		DATE: 01/09/02
DWG. BY	RC	SCALE	DRAWING NO.
CK. BY	NONE		59

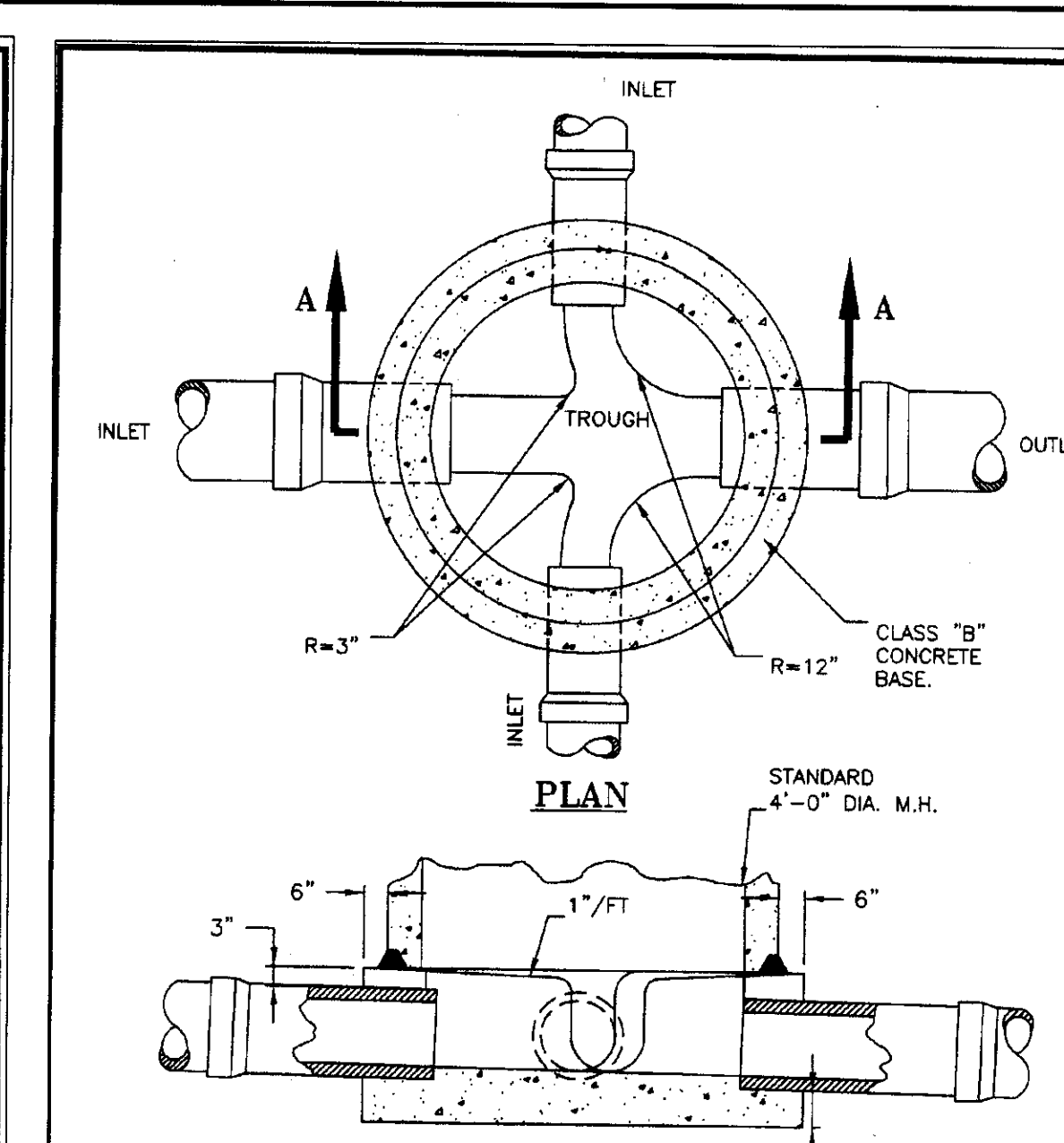


**TYPICAL INTERSECTION FOR TYPE 1 MAINTENANCE HOLE**

NOTES:

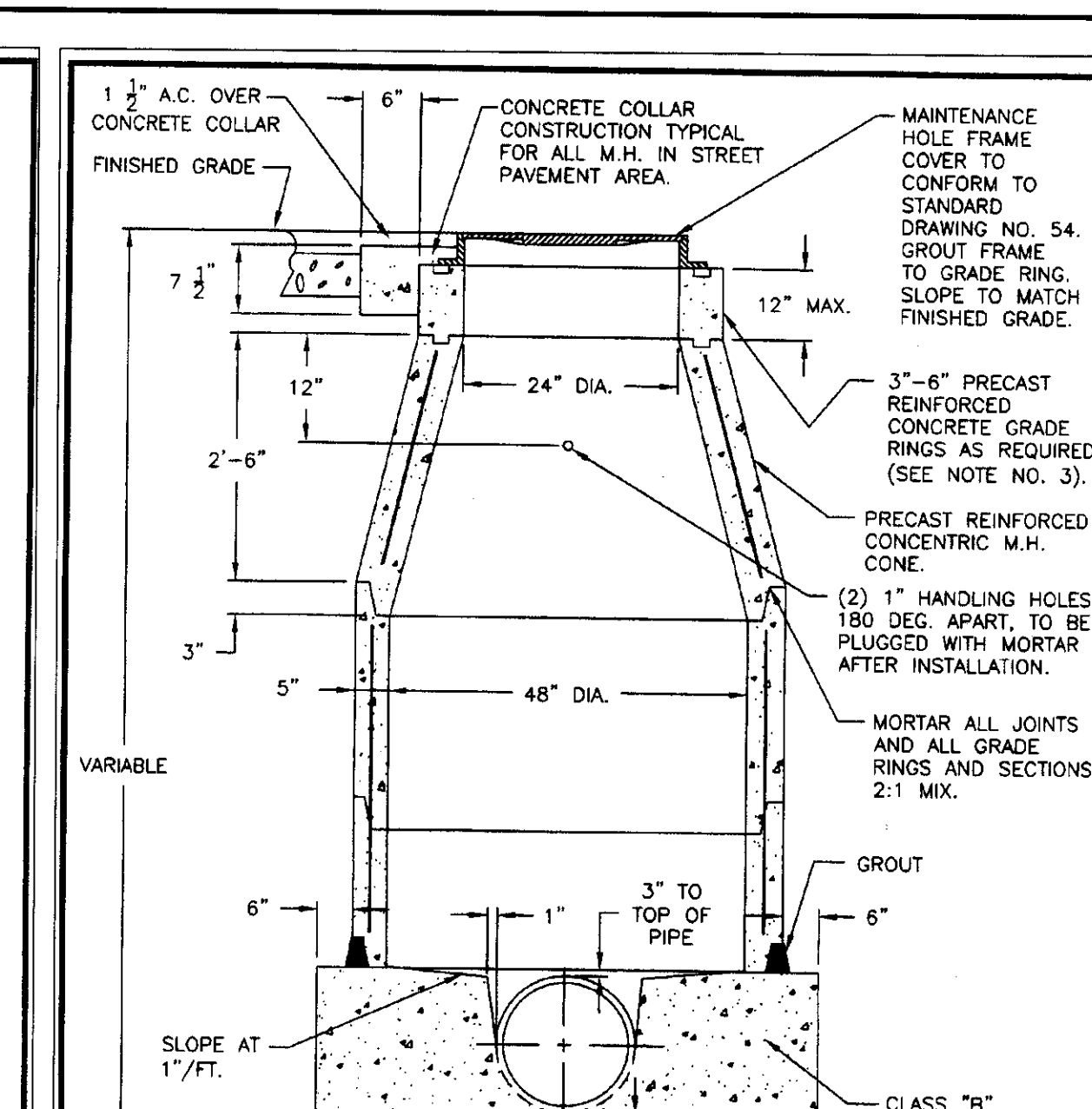
- TROUGH WITHIN M.H. TO BE FULLY ACCESSIBLE.
- INLET PIPES NOT TO EXTEND MORE THAN 3" INTO M.H.
- OUTLET PIPE TO BE FLUSH AND ALL EDGES SMOOTH WITH M.H. WALL.
- CONSTRUCT FLEXIBLE PIPE JOINTS AT 2'-0" MAX. FROM BASE OF M.H.
- M.H. BOTTOM SHALL BE HYDRAULICALLY SHAPED IN THE FIELD AS DIRECTED.

REV. NO.	REV. DATE	REV. BY	APPROVED BY CITY ENGINEER
3	6/1/2000	HLB/RLH	Finbow J. O'Keefe
DIGITIZED	1/1/92		DATE: 01/09/02
DWG. BY	RC	SCALE	DRAWING NO.
CK. BY	NONE		78



**TYPE 1 MAINTENANCE HOLE FOR PIPES 33" DIAMETER OR SMALLER**

REV. NO.	REV. DATE	REV. BY	APPROVED BY CITY ENGINEER
3	6/1/2000	HLB/RLH	Finbow J. O'Keefe
DIGITIZED	1/1/92		DATE: 01/09/02
DWG. BY	RC	SCALE	DRAWING NO.
CK. BY	NONE		55



**SECTION A-A**

NOTES:

- PRECAST CONCRETE M.H. UNITS SHALL CONFORM TO A.S.T.M. C-478.
- CONSTRUCT PIPE STUB JOINT, 2'-0" MINIMUM FROM BASE OF M.H. ATTACH PIPE WITH FLEXIBLE RUBBER COUPLING.
- PRIOR APPROVAL FROM THE CITY ENGINEER MUST BE OBTAINED BEFORE INSTALLING MORE THAN 12" OF GRADE RINGS.
- FOR TYPICAL PIPE INTERSECTION DETAIL, SEE DRAWING NO. 78.
- INTERIOR OF SANITARY SEWER M.H. SHALL BE COATED IN ACCORDANCE WITH SECTION 71-1.09 OF THE STANDARD SPECIFICATIONS.

REV. NO.	REV. DATE	REV. BY	APPROVED BY CITY ENGINEER
3	6/1/2000	HLB/RLH	Finbow J. O'Keefe
DIGITIZED	1/1/92		DATE: 01/09/02
DWG. BY	RC	SCALE	DRAWING NO.
CK. BY	NONE		55

(CONT'D FROM DWG. 56)

D <sub>2</sub>	"F"	D <sub>2</sub>	"F"
36"	11"	63"	10"
39"	10"	66"	10 1/4"
42"	8 3/4"	69"	10 3/4"
45"	7 3/4"	72"	11"
48"	8"	78"	11 3/4"
51"	8 1/2"	84"	12 1/2"
54"	9"	90"	13 1/4"
57"	9 1/4"	96"	14"
60"	9 1/2"		

(SEE DRAWING NO. 56B, 56C FOR ADDITIONAL DETAILS)

NOTES:

- LENGTH SHALL BE 5'-6" UNLESS OTHERWISE SHOWN ON THE IMPROVEMENT PLANS.
- THICKNESS OF DECK SHALL VARY WHEN NECESSARY TO PROVIDE LEVEL SEAT FOR M.H. BARREL.
- REINFORCING STEEL SHALL BE ROUND, DEFORMED BARS, 2" CLEAR MINIMUM FROM FACE OF CONCRETE. SIZES AND LENGTH ARE SHOWN IN TABLE ON DRAWING 56C. CONCRETE SHALL BE 3000 LBS. PER SQ. INCH MINIMUM AT 28 DAYS.
- RINGS, REDUCERS, AND M.H. BARRELS FOR ACCESS SHAFT SHALL BE SEATED IN CONCRETE MORTAR COMPOSED OF ONE PART CEMENT TO 1-1/2" PARTS SAND BY VOLUME AND NEATLY POINTED OR WIRED INSIDE THE SHAFT.
- FLOOR OF M.H. SHALL BE STEEL TROWELED TO SPRING LINE.
- BASE OF M.H. SHALL BE POURED IN ONE CONTINUOUS OPERATION, EXCEPT THAT THE CONTRACTOR SHALL HAVE THE OPTION OF PLACING A CONSTRUCTION JOINT AT THE SPRING LINE, WITH A LONGITUDINAL KEYWAY.
- INTERIOR OF SANITARY SEWER M.H.'S SHALL BE COATED IN ACCORDANCE WITH SECTION 71-1.09 OF THE STANDARD SPECIFICATIONS.
- M.H. STATIONING ON IMPROVEMENT PLAN SHALL BE TO THE CENTER OF M.H.

REV. NO.	REV. DATE	REV. BY	APPROVED BY CITY ENGINEER
4	6/1/2000	HLB/RLH	Finbow J. O'Keefe
DIGITIZED	1/1/92		DATE: 01/09/02
DWG. BY	RC	SCALE	DRAWING NO.
CK. BY	NONE		56A

(CONT'D FROM DWG. 56B)

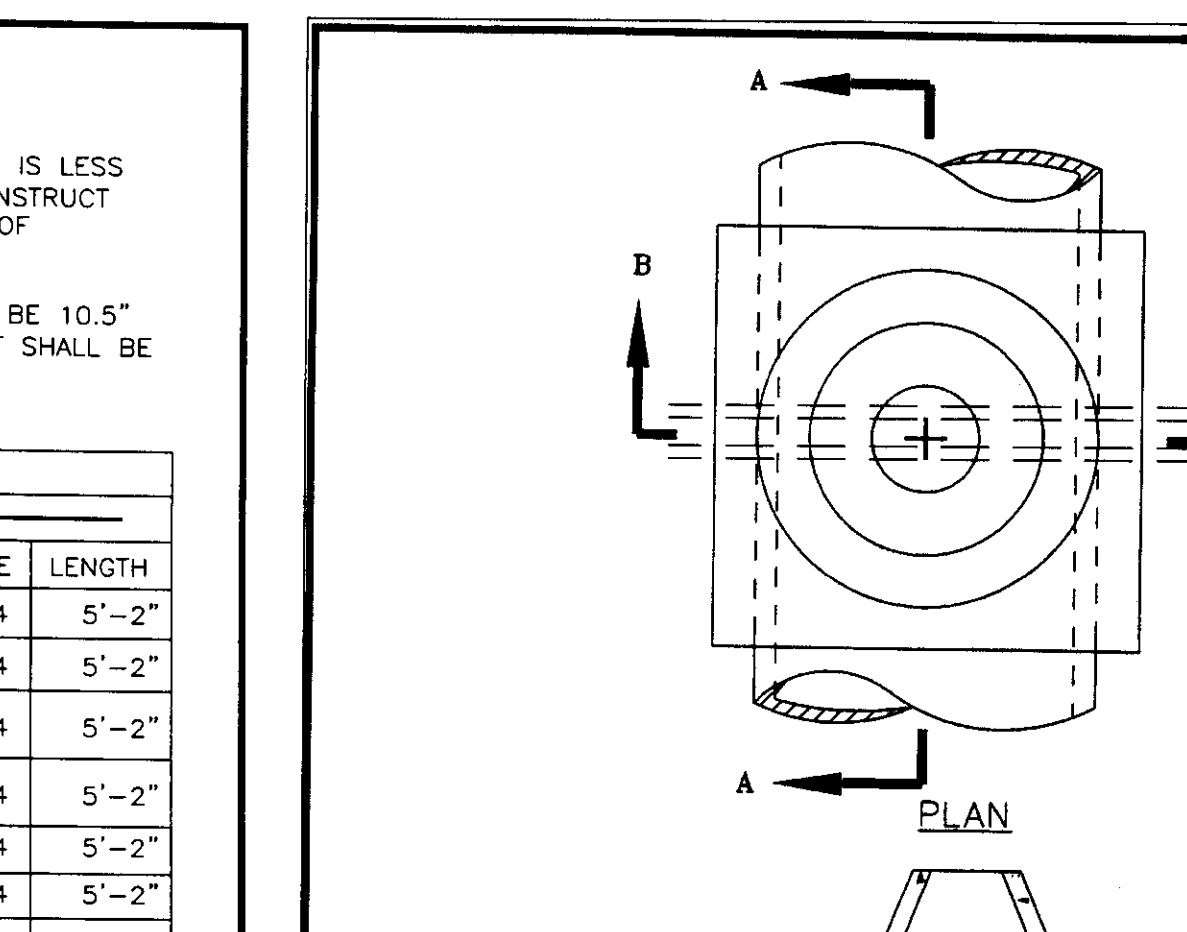
NOTES:

- WHEN DEPTH OF MAINTENANCE HOLE FROM STREET GRADE TO TOP OF BOX IS LESS THAN 2'-10.5" FOR PAVED STREETS OR 3'-6" FOR UNPAVED STREETS, CONSTRUCT MONOLITHIC SHAFT AS SHOWN. THE CONTRACTOR SHALL HAVE THE OPTION OF CONSTRUCTING SHAFT AS SHOWN FOR ANY DEPTH OF MAINTENANCE HOLE.
- PER SECTION A-A ABOVE, IN PAVED STREETS THE MAXIMUM HEIGHT SHALL BE 10.5" AND THE MINIMUM HEIGHT 7.5"; IN UNPAVED STREETS THE MAXIMUM HEIGHT SHALL BE 16.5" AND THE MINIMUM HEIGHT 13.5".

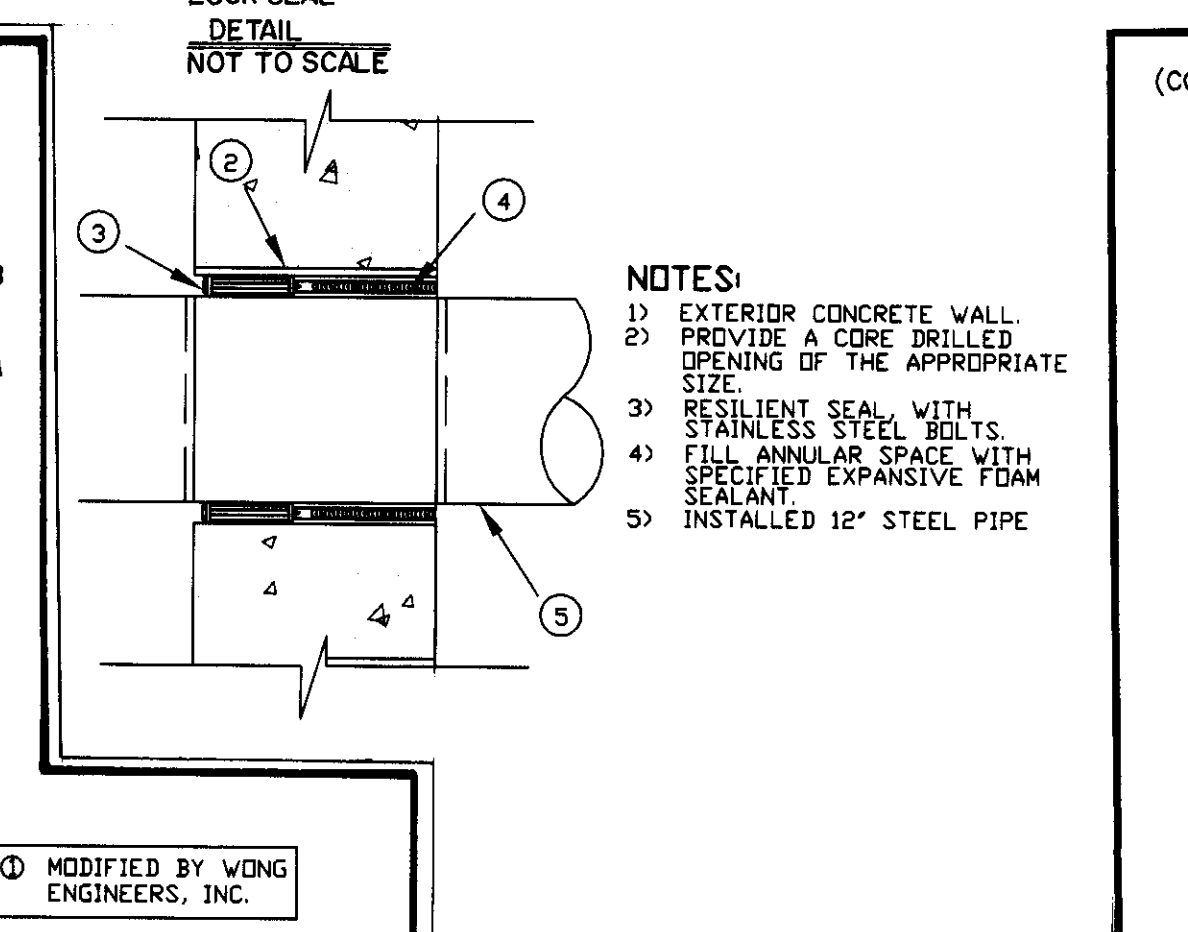
D <sub>2</sub>	"C" BAR	"D" BAR	"E" BAR
36"	2 # 4 6'-4"	4 # 4 4'-6"	2 # 4 5'-2"
39"	2 # 4 6'-4"	4 # 4 4'-7"	2 # 4 5'-2"
42"	2 # 4 6'-4"	4 # 5 4'-7 1/2"	2 # 4 5'-2"
45"	2 # 4 6'-4"	4 # 5 4'-8 1/2"	2 # 4 5'-2"
48"	2 # 4 6'-4"	4 # 5 5'-0"	4 # 4 5'-2"
51"	2 # 4 6'-4"	4 # 5 5'-4"	4 # 4 5'-2"
54"	2 # 4 6'-4"	4 # 5 5'-8"	4 # 4 5'-2"
57"	2 # 4 6'-4"	4 # 5 5'-11 1/2"	4 # 4 5'-2"
60"	2 # 4 6'-4"	4 # 5 6'-3"	4 # 4 5'-2"
63"	2 # 4 6'-4"	4 # 5 6'-7"	4 # 4 5'-2"
66"	2 # 4 6'-4"	4 # 5 6'-10 1/2"	4 # 4 5'-2"
69"	2 # 4 6'-4"	4 # 5 7'-2 1/2"	4 # 4 5'-2"
72"	2 # 4 6'-4"	4 # 5 7'-6"	4 # 4 5'-2"
78"	2 # 4 6'-4"	4 # 5 8'-1 1/2"	4 # 4 5'-2"
84"	2 # 4 6'-4"	4 # 5 8'-9"	4 # 4 5'-2"
90"	2 # 4 6'-4"	4 # 6 9'-4 1/2"	4 # 4 5'-2"
96"	2 # 4 6'-4"	4 # 6 10'-0"	4 # 4 5'-2"

3. INTERIOR OF SANITARY SEWER MAINTENANCE HOLE SHALL BE COATED IN ACCORDANCE WITH SECTION 71-1.09 OF THE STANDARD SPECIFICATIONS.

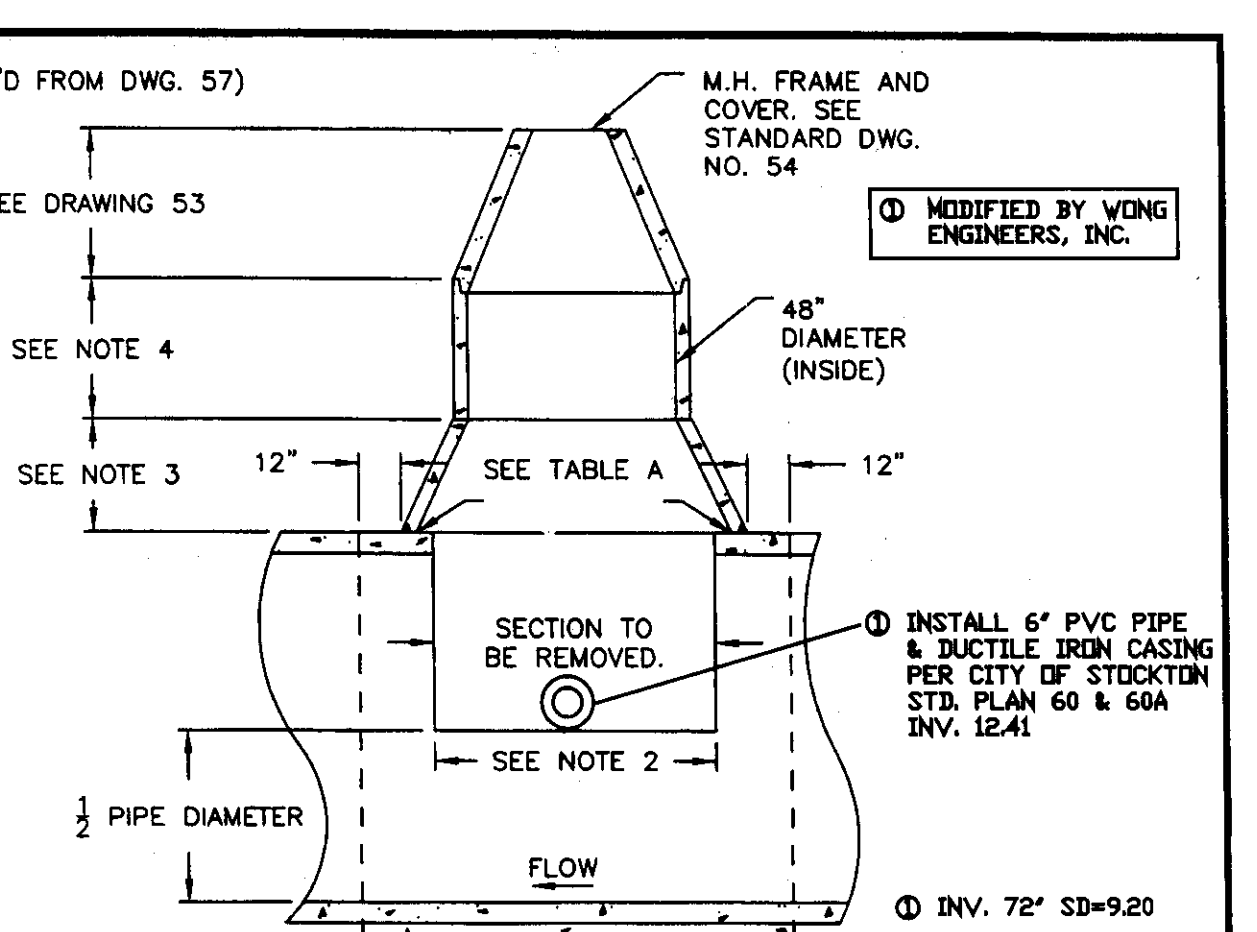
REV. NO.	REV. DATE	REV. BY	APPROVED BY CITY ENGINEER
4	6/1/2000	HLB/RLH	Finbow J. O'Keefe
DIGITIZED	1/1/92		DATE: 01/09/02
DWG. BY	RC	SCALE	DRAWING NO.
CK. BY	NONE		56C



REV. NO.	REV. DATE	REV. BY	APPROVED BY CITY ENGINEER
2	12/23/95	HLB/RLH	Finbow J. O'Keefe
DIGITIZED	1/1/92		DATE: 01/09/02
DWG. BY	RC	SCALE	DRAWING NO.
CK. BY	NONE		57



REV. NO.	REV. DATE	REV. BY	APPROVED BY CITY ENGINEER
2	12/23/95	HLB/RLH	Finbow J. O'Keefe
DIGITIZED	1/1/92		DATE: 01/09/02
DWG. BY	RC	SCALE	DRAWING NO.
CK. BY	NONE		57A



REV. NO.	REV. DATE	REV. BY	APPROVED BY CITY ENGINEER
2	12/23/95	HLB/RLH	Finbow J. O'Keefe
DIGITIZED	1/1/92		DATE: 01/09/02
DWG. BY	RC	SCALE	DRAWING NO.
CK. BY	NONE		57A

UNAUTHORIZED CHANGES AND USES:  
THE ENGINEER PREPARING THESE PLANS WILL NOT BE RESPONSIBLE FOR, OR LIABLE FOR, UNAUTHORIZED CHANGES TO OR USES OF THESE PLANS. ALL CHANGES TO THE PLANS MUST BE IN WRITING AND MUST BE APPROVED BY THE PREPARER OF THESE PLANS.

NO.	DESCRIPTION	DATE	BY

**WONG ENGINEERS, INC.**  
PLANNING ENGINEERING SURVEYING  
4578 FEATHER RIVER DRIVE, SUITE A  
STOCKTON, CALIFORNIA  
(209)476-0011

DATE 8-7-2002  
R.C.E. 14269

JOB NO: 3338  
DATE: AUGUST 2002  
SCALE: AS SHOWN  
DRAWN: SE  
DESIGN: ZCW  
CHECKED: ZCW

TRACT 3172  
MICHAEL ESTATES

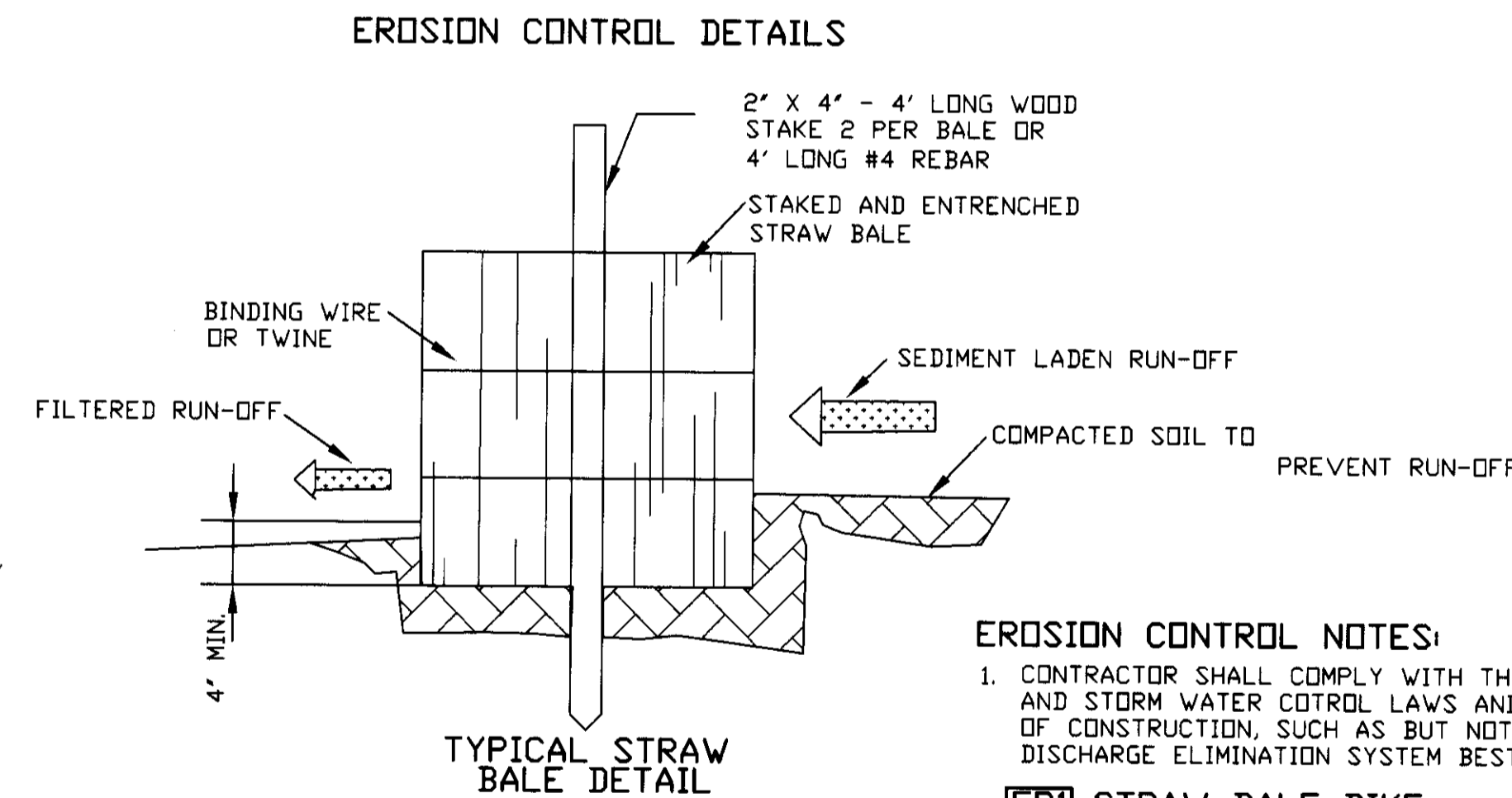
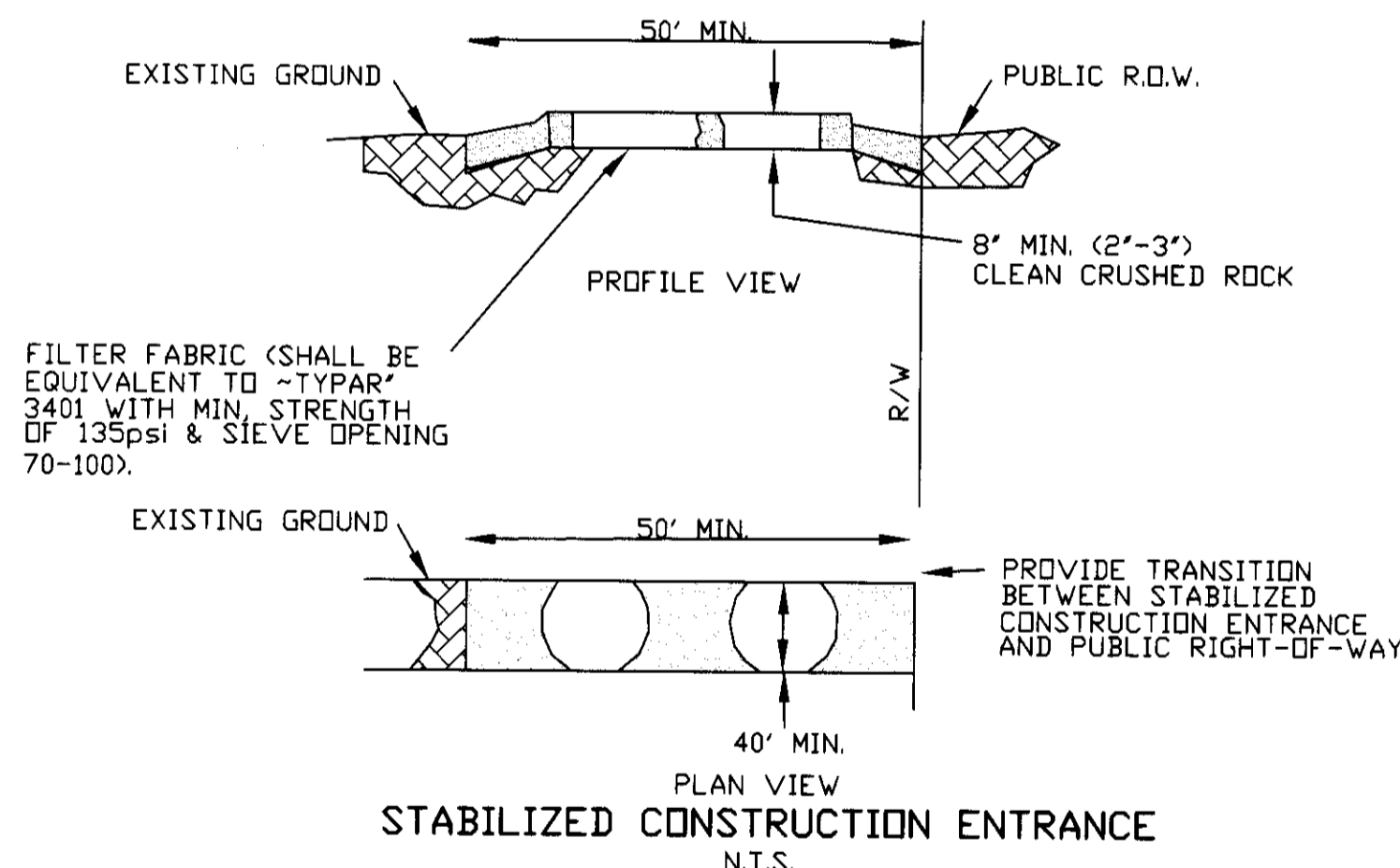
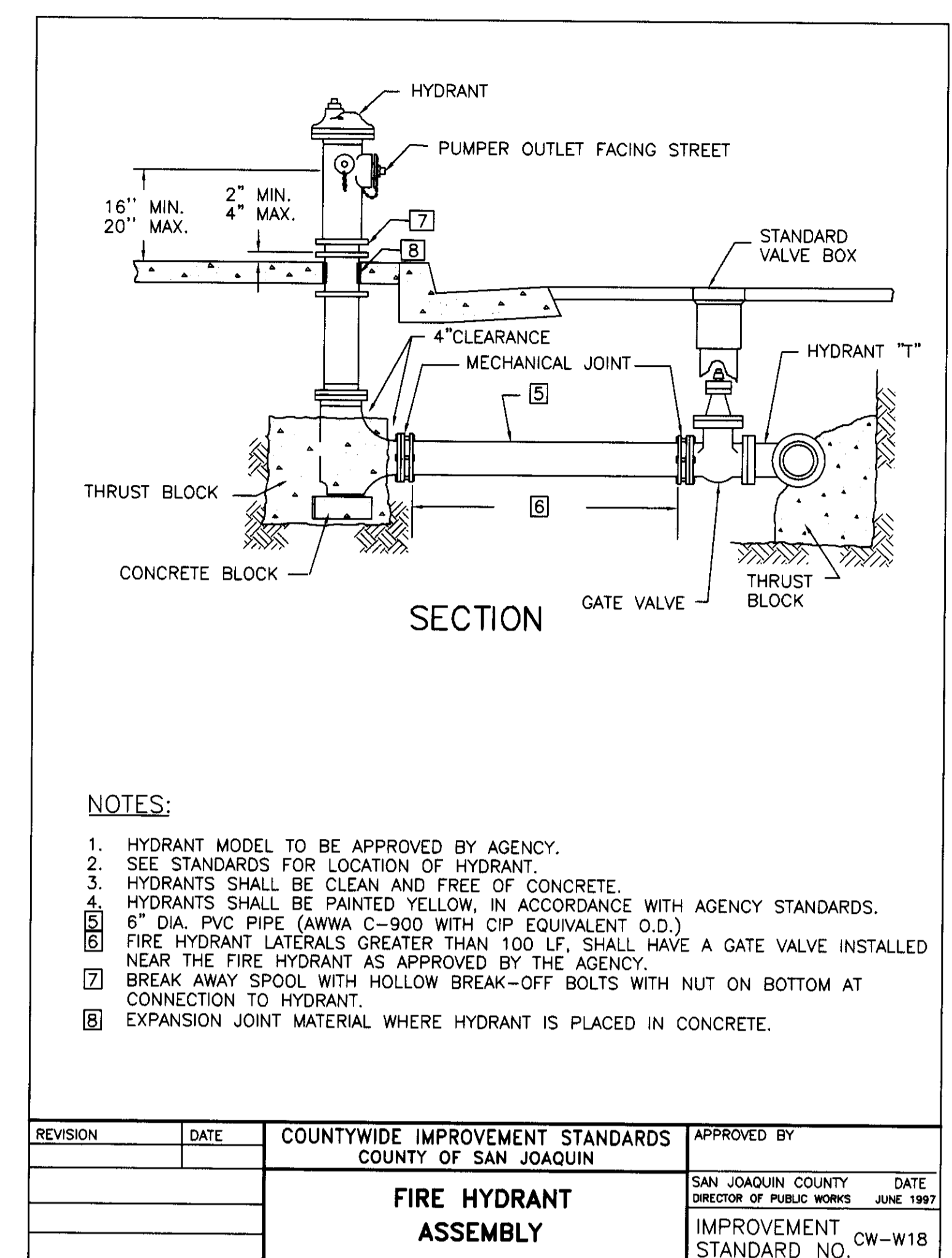
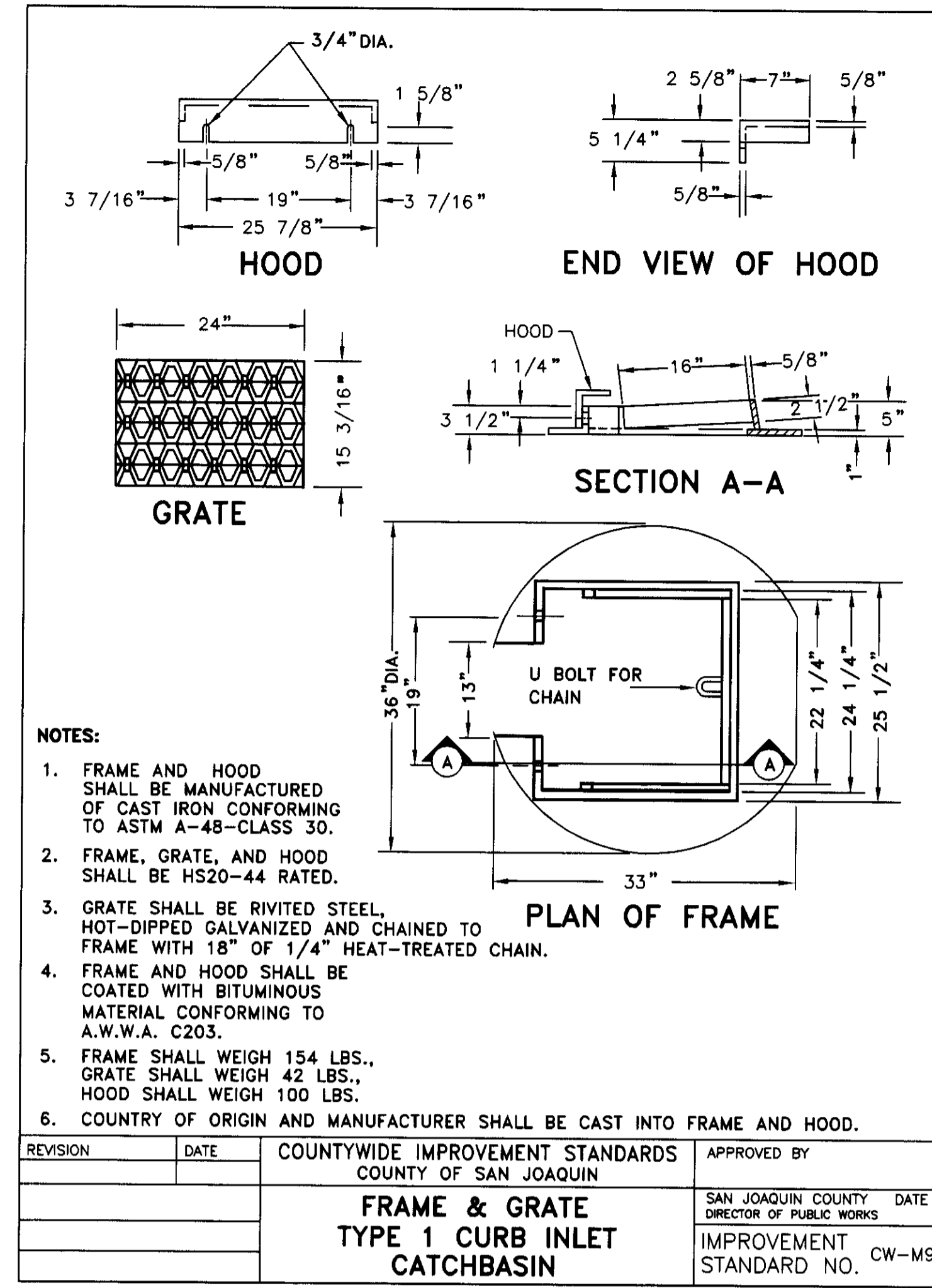
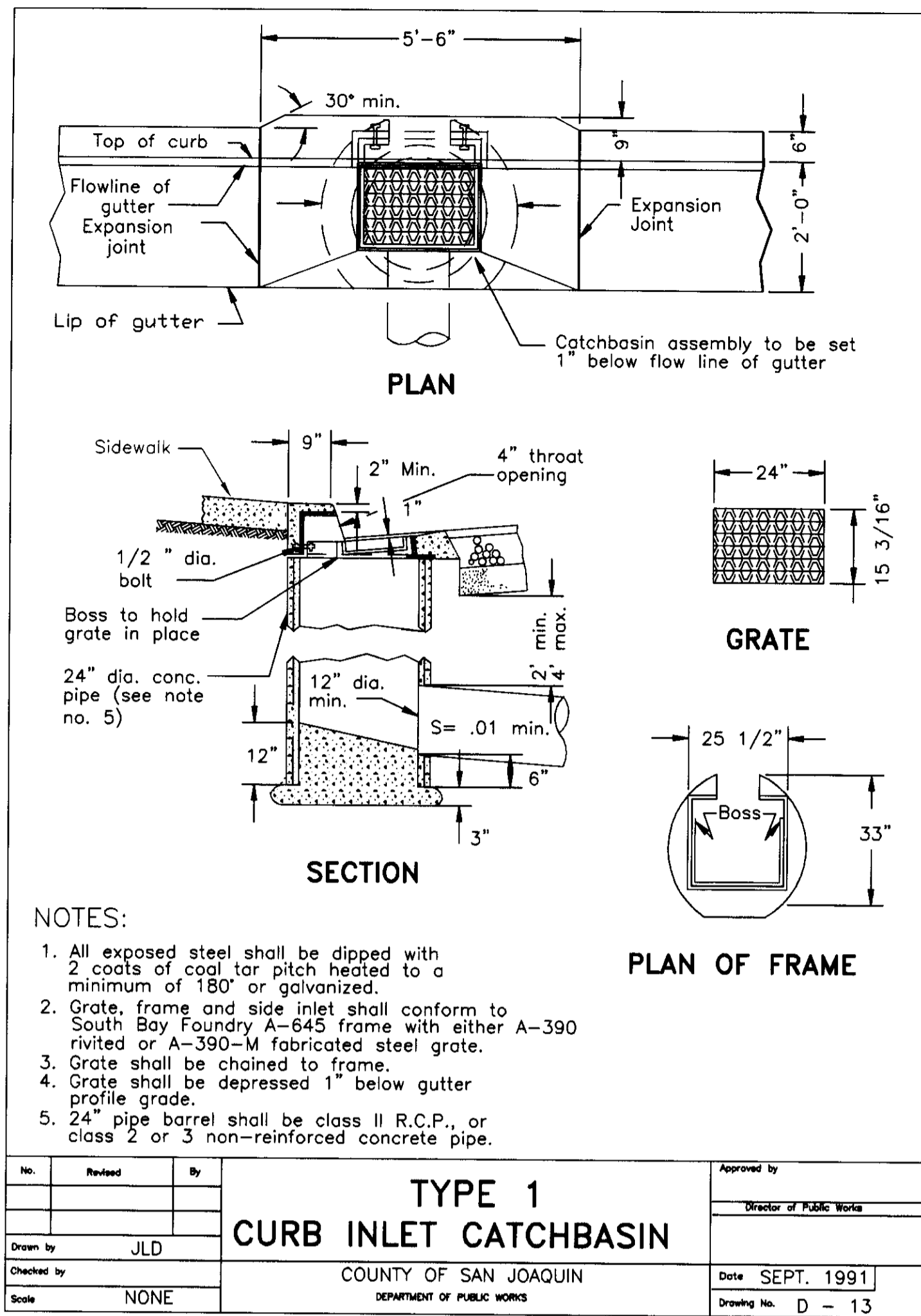
SAN JOAQUIN COUNTY,  
CALIFORNIA

**DETAIL SHEET**

SHEET  
OF SIX  
FILE

SU 3679

3338DETAIL.DWG

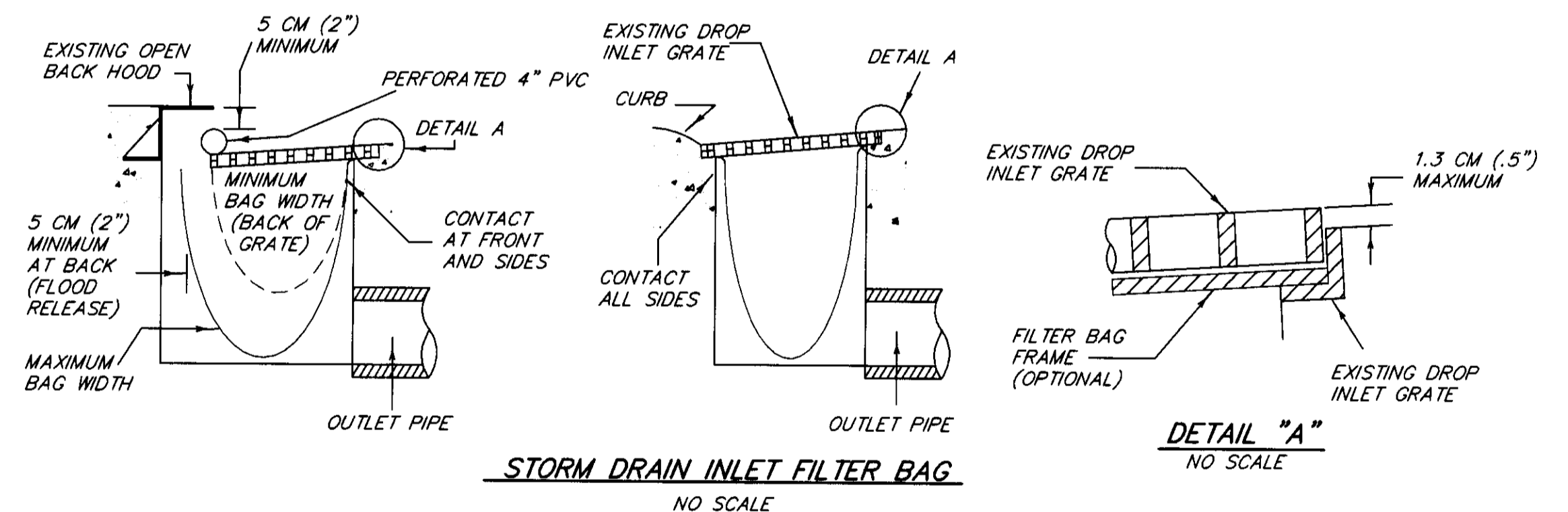


**EROSION CONTROL NOTES:**

- CONTRACTOR SHALL COMPLY WITH THE REQUIREMENTS FOR EROSION, AND STORM WATER CONTROL LAWS AND REGULATIONS IN EFFECT AT TIME OF CONSTRUCTION, SUCH AS BUT NOT LIMITED TO THE NATIONAL POLLUTION DISCHARGE ELIMINATION SYSTEM BEST MANAGEMENT PRACTICE REQUIREMENTS.

**EROSION CONTROL NOTES:**

- [ER] STRAW BALE DIKE**
- CONSTRUCTION SPECIFICATIONS:
- BALES SHALL BE PLACED IN A ROW WITH ENDS TIGHTLY ABUTTING.
  - EACH BALE SHALL BE EMBEDDED IN THE SOIL A MINIMUM OF 4 INCHES.
  - BALES SHALL BE SECURELY ANCHORED IN PLACE BY TWO STAKES OR REBAR DRIVEN THROUGH THE BALES. THE FIRST STAKE IN EACH BALE SHALL BE DRIVEN TOWARD THE PREVIOUSLY LAID BALE TO FORCE THE BALES TOGETHER.
  - THE DIKE SHALL BE INSPECTED AFTER EACH STORM, AND REPAIR OR REPLACEMENT SHALL BE MADE PROMPTLY AS NEEDED.
  - BALES SHALL BE REMOVED WHEN THEY SERVED THEIR PURPOSE SO AS NOT TO BLOCK OR IMPEDE STORM FLOW OR DRAINAGE.



**STORM DRAIN INLET FILTER BAG NOTES:**

- STORM DRAINAGE SYSTEM CONSTRUCTION NOTES:**
- STORM DRAINAGE PIPES AND MAINTENANCE HOLES SHALL CONFORM TO THE SAN JOAQUIN COUNTY SPECIFICATIONS AND STANDARD PLANS FOR MATERIALS AND INSTALLATION REQUIREMENTS.
  - CONTRACTOR SHALL PREVENT POSSIBLE STORM WATER POLLUTION FROM ENTERING INTO STORM DRAINAGE CATCH BASINS DURING CONSTRUCTION.
  - THE CONTRACTOR SHALL COMPLY WITH THE REQUIREMENTS OF THE STATE WATER RESOURCES CONTROL BOARD (SWRCB) ORDER NO. 99-08-DW0, NPDES GENERAL PERMIT NO. CAS000002.
  - ANY AND ALL SEDIMENT AND/OR EROSION CONTROL DETAILS CONTAINED WITHIN THESE PLANS ARE TO BE CONSIDERED AS "REFERENCE DETAILS" ONLY AND THE CITY'S APPROVAL OF THESE PLANS AND "REFERENCE DETAILS" DOES NOT RELIEVE THE OWNER/DEVELOPER FROM COMPLIANCE WITH THE STORM WATER POLLUTION PREVENTION PLAN (SWPPP) AS APPROVED BY THE CITY'S STORMWATER DIVISION.
  - IN ADDITION TO ALL THE OTHER REQUIRED PERMITS, THE CONTRACTOR SHALL HAVE A GRADING AND EROSION CONTROL PERMIT COMPLETED.
  - PROJECT UNDER 5.00 ACRES; THEREFORE, NO SWPPP NUMBER REQUIRED FOR THIS PROJECT.

**UNAUTHORIZED CHANGES AND USES:**  
THE ENGINEER PREPARING THESE PLANS WILL NOT BE RESPONSIBLE FOR, OR LIABLE FOR, UNAUTHORIZED CHANGES TO OR USES OF THESE PLANS. ALL CHANGES TO THE PLANS MUST BE IN WRITING AND MUST BE APPROVED BY THE PREPARER OF THESE PLANS.

REVISIONS			
NO.	DESCRIPTION	DATE	BY

**WONG ENGINEERS, INC.**  
PLANNING ENGINEERING SURVEYING  
4578 FEATHER RIVER DRIVE, SUITE A  
STOCKTON, CALIFORNIA 95210  
(209) 476-0011

DATE: 8-7-2002  
R.C.E. 14269

JOB NO.: 3338  
DATE: JULY 2002  
SCALE: AS SHOWN  
DRAWN: SE  
DESIGN:  
CHECKED: ZCW

TRACT 3172  
MICHAEL ESTATES

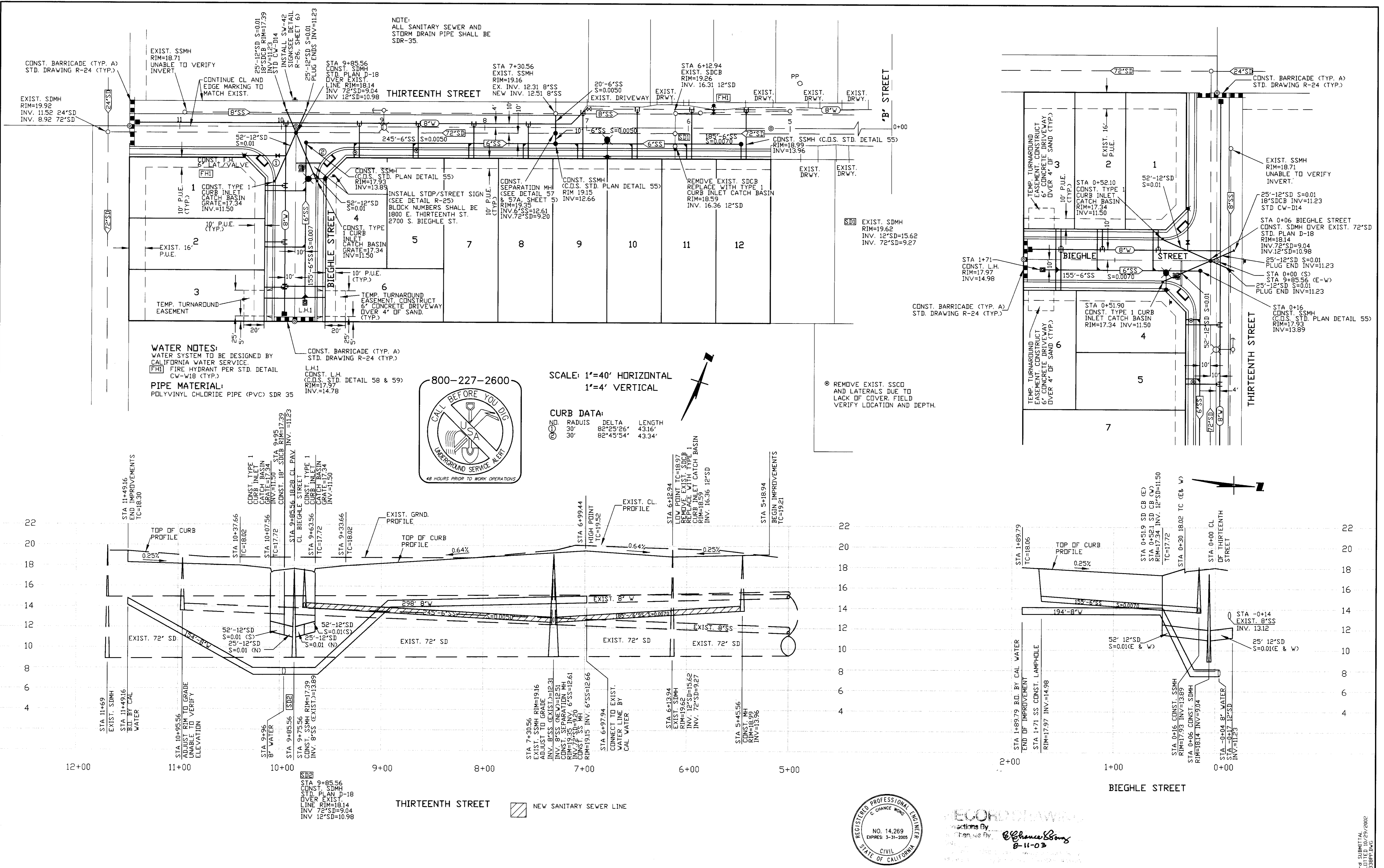
SAN JOAQUIN COUNTY,  
CALIFORNIA

**EROSION CONTROL/DETAIL SHEET**

SHEET  
4  
OF SIX  
FILE

3-PD SUBMITTAL  
SHEET SET 4/12/02  
PLOTTED 06/17/02

3681



**WATER NOTES:**  
 WATER SYSTEM TO BE DESIGNED BY CALIFORNIA WATER SERVICE.  
 (F.H.) FIRE HYDRANT PER STD. DETAIL CW-W18 (TYP.)  
**PIPE MATERIAL:**  
 POLYVINYL CHLORIDE PIPE (PVC) SDR 35



SCALE: 1"=40' HORIZONTAL  
 1"=4' VERTICAL

**CURB DATA:**

NO.	RADIUS	DELTA	LENGTH
1	30'	82°29'26"	43.16'
2	30'	82°45'54"	43.34'

⊙ REMOVE EXIST. SDCO AND LATERALS DUE TO LACK OF COVER. FIELD VERIFY LOCATION AND DEPTH.

**UNAUTHORIZED CHANGES AND USES:**  
 THE ENGINEER PREPARING THESE PLANS WILL NOT BE RESPONSIBLE FOR, OR LIABLE FOR, UNAUTHORIZED CHANGES TO OR USES OF THESE PLANS. ALL CHANGES TO THE PLANS MUST BE IN WRITING AND MUST BE APPROVED BY THE PREPARER OF THESE PLANS.

**REVISIONS**

NO.	DESCRIPTION	DATE	BY

**WONG ENGINEERS, INC.**  
 PLANNING ENGINEERING SURVEYING  
 4578 FEATHER RIVER DRIVE, SUITE A  
 STOCKTON, CALIFORNIA  
 (209)476-0011



RECORD DRAWING  
 Made by: E. Chance Wong  
 Checked by: E. Chance Wong  
 8-11-03

**JOB NO.:** 3338  
**DATE:** JULY 2002  
**SCALE:** AS SHOWN  
**DRAWN:** SE/WMK  
**DESIGN:** WE  
**CHECKED:** ZCW

TRACT 3172  
 MICHAEL ESTATES  
 SAN JOAQUIN COUNTY, CALIFORNIA  
**THIRTEENTH STREET STA 5+18.94 TO STA 11+49.16**  
**BIEGHLE STREET STA 0+00 TO STA 1+89.79**

**SHEET**  
**3**  
**OF SIX**  
**FILE**

PL 3172 (10/27/2002)  
 3338PP-JWG

800-227-2600



**BENCHMARK:**

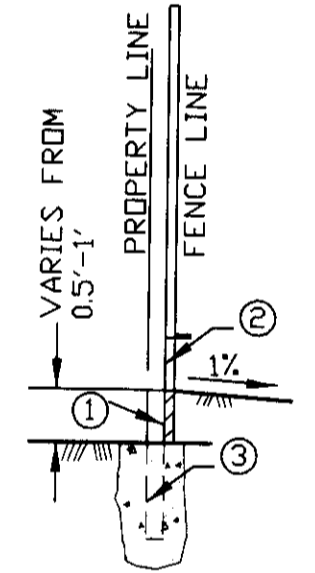
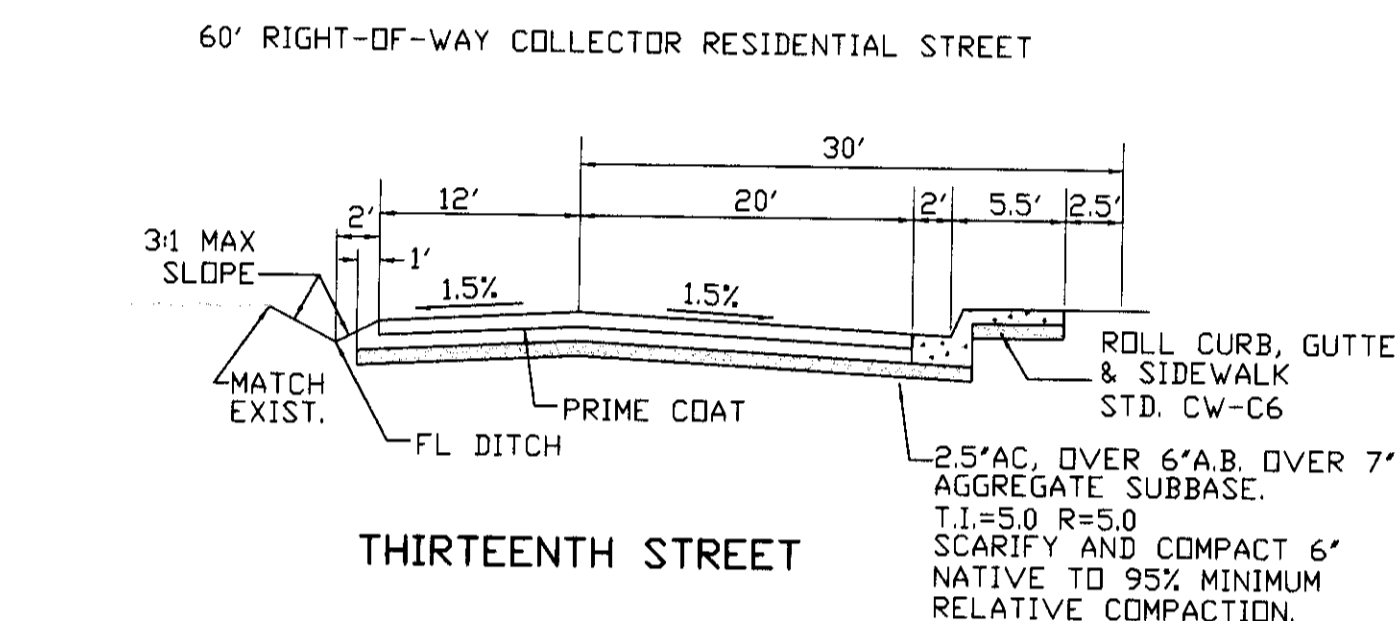
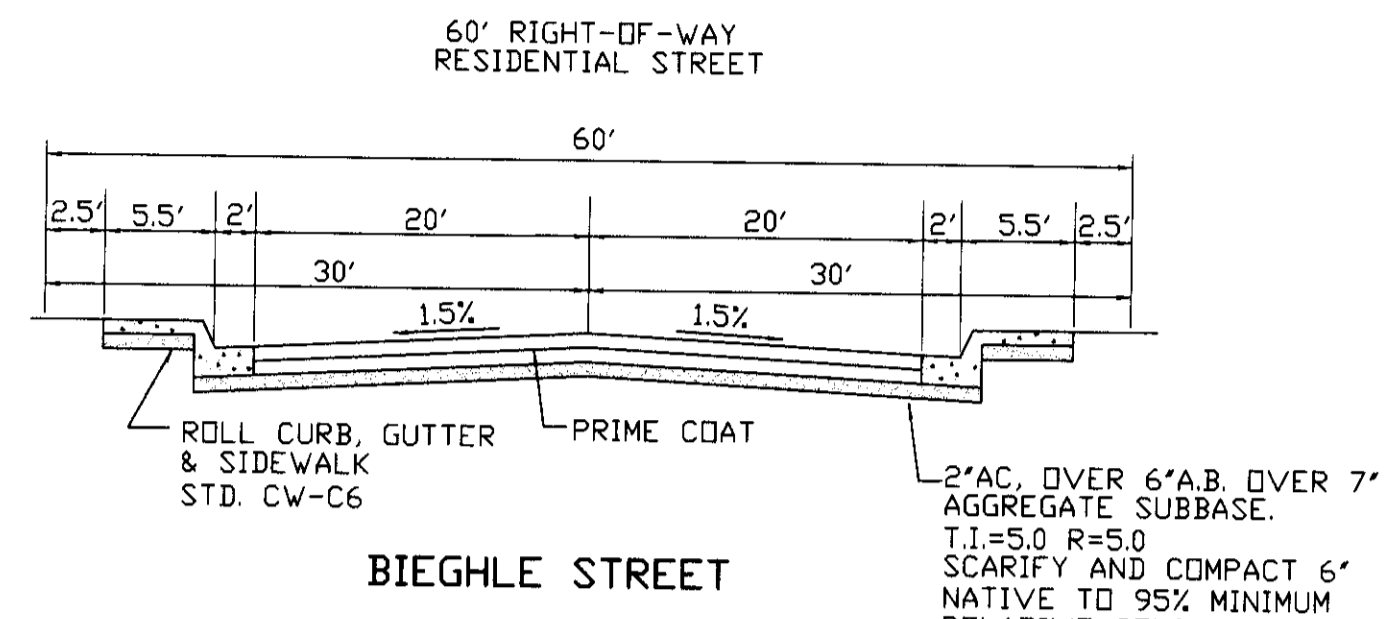
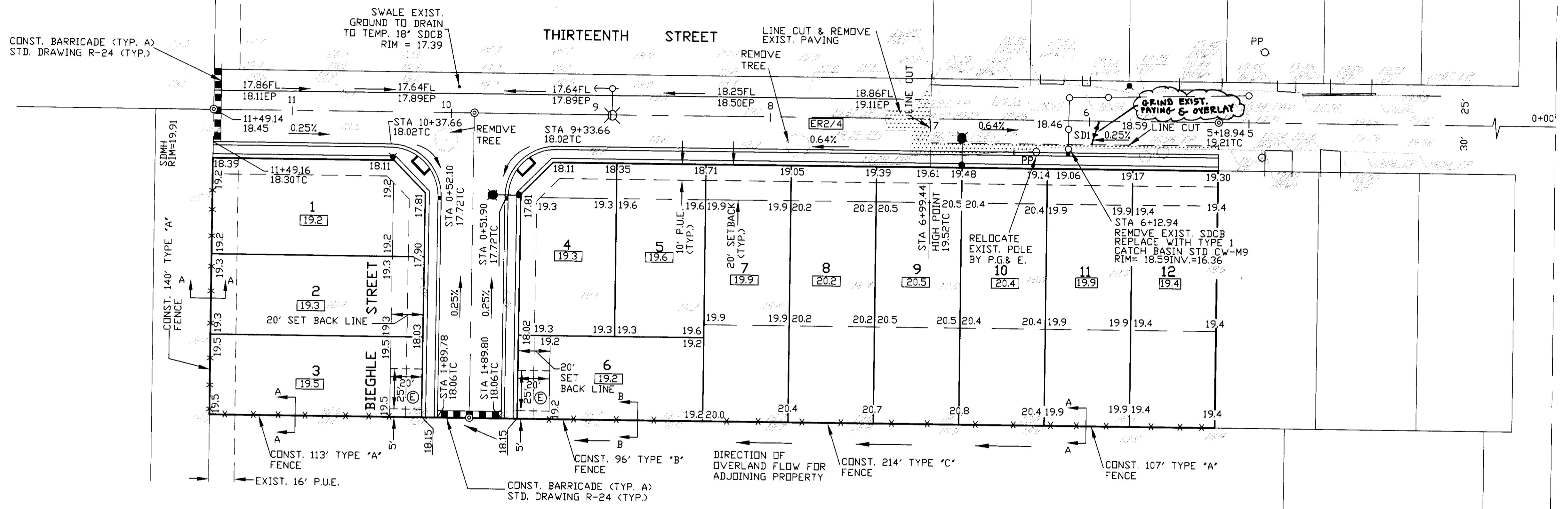
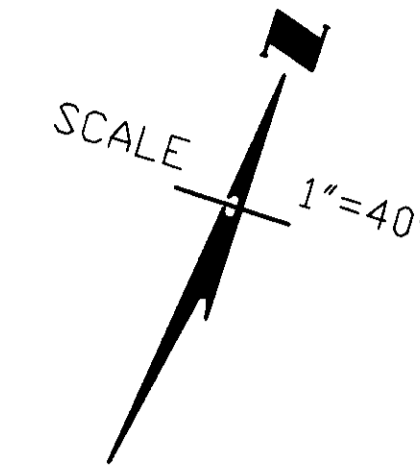
CITY OF STOCKTON BENCHMARK NO. 175  
BRASS DISK MARKING CDS MONUMENT STAMPED "SS-12" IN MONUMENT BOX IN TRAFFIC CONTROL ISLAND AT THE SOUTH SIDE OF CHARTER WAY AT MARIPOSA ROAD.  
22.50 NGVD 1929 (1996 ADJUSTMENT)  
MARCH 2000 REVISION

**TEMPORARY BENCHMARK: T.B.M.**

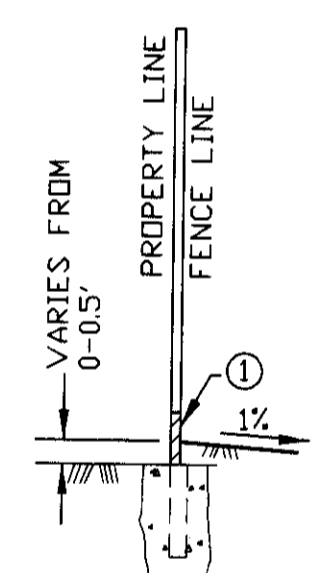
SHIP SPIKE TAGGED COUNTY BENCHMARK IN STREETLIGHT. ELEVATION 21.39

**NOTE:**

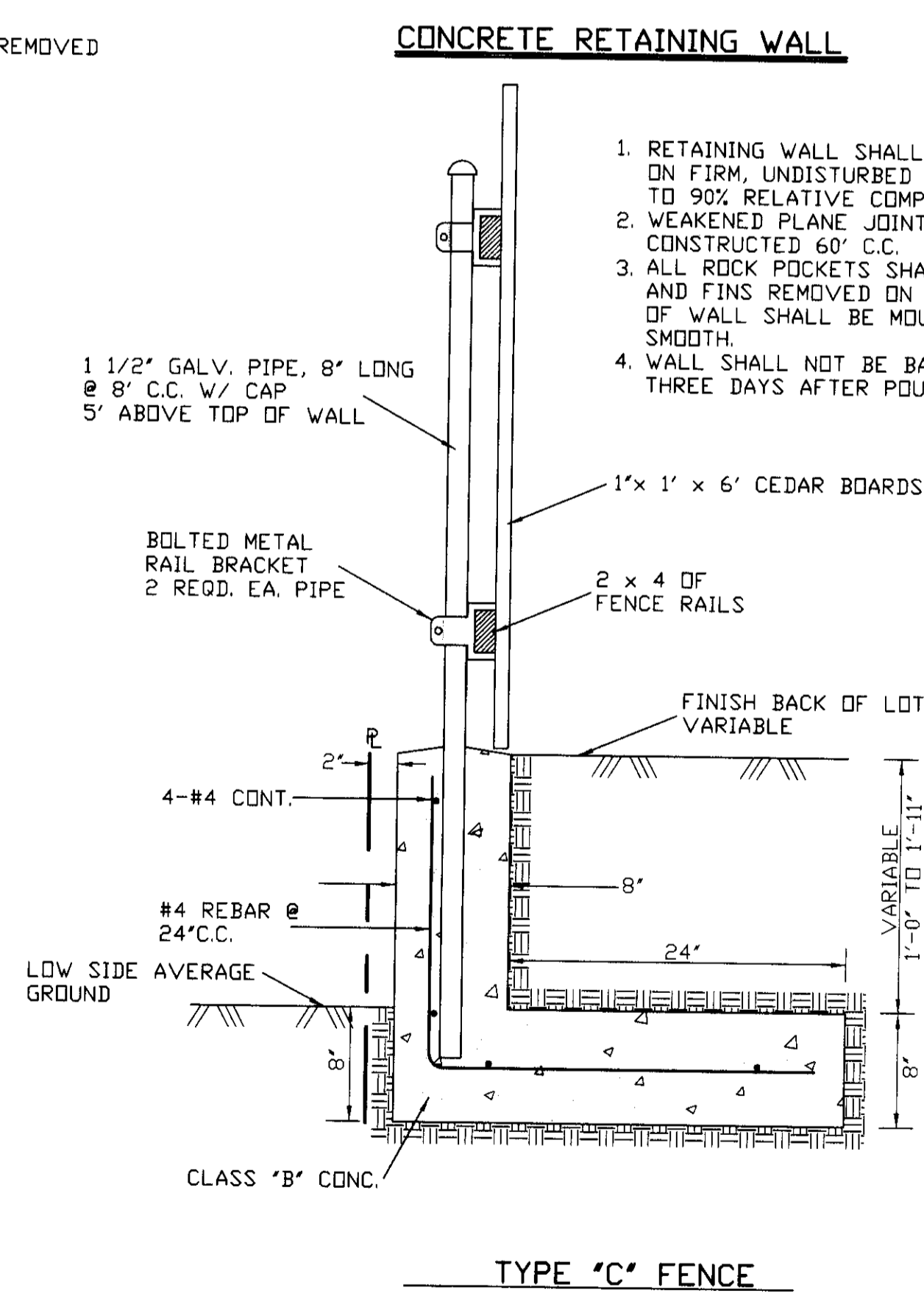
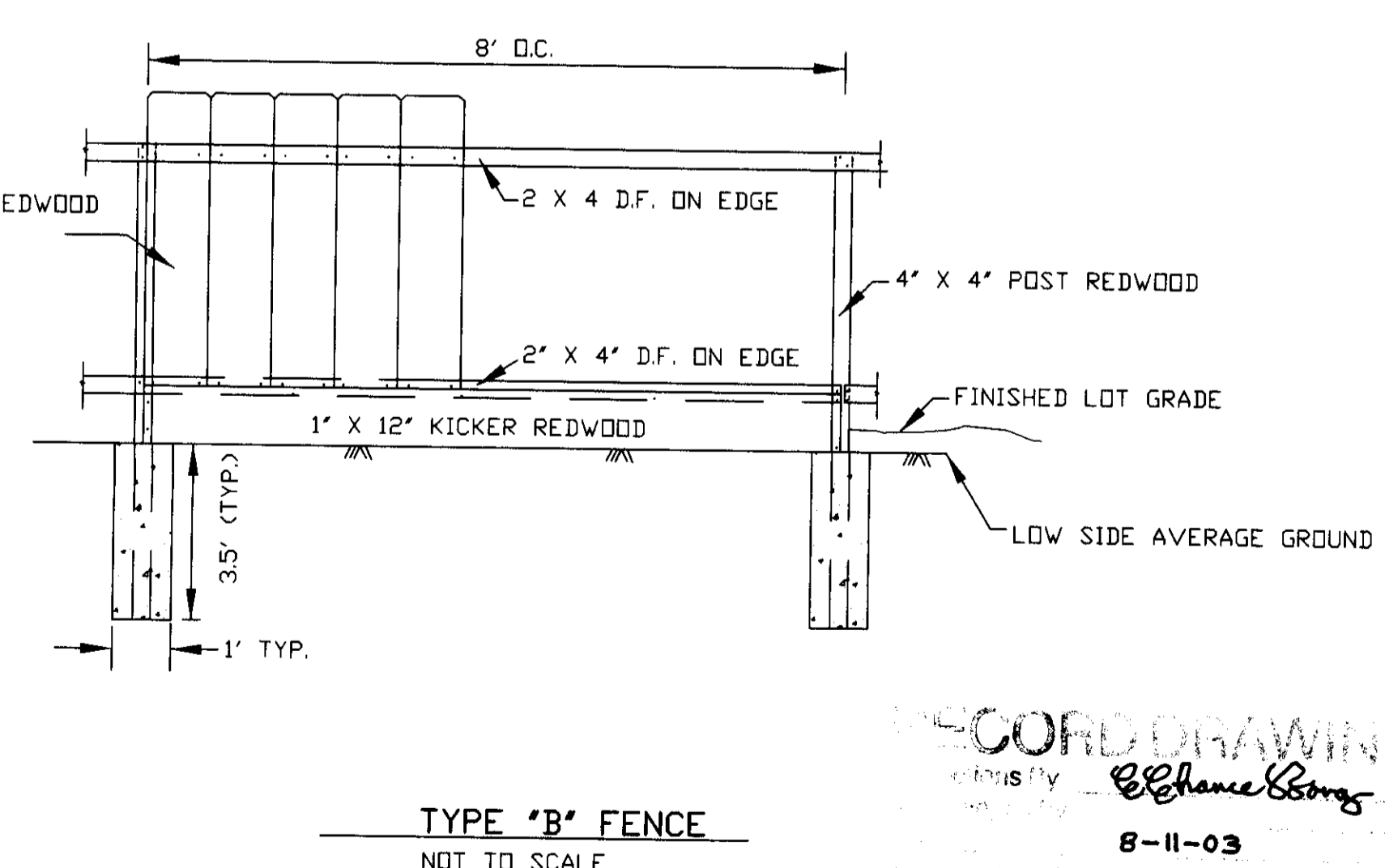
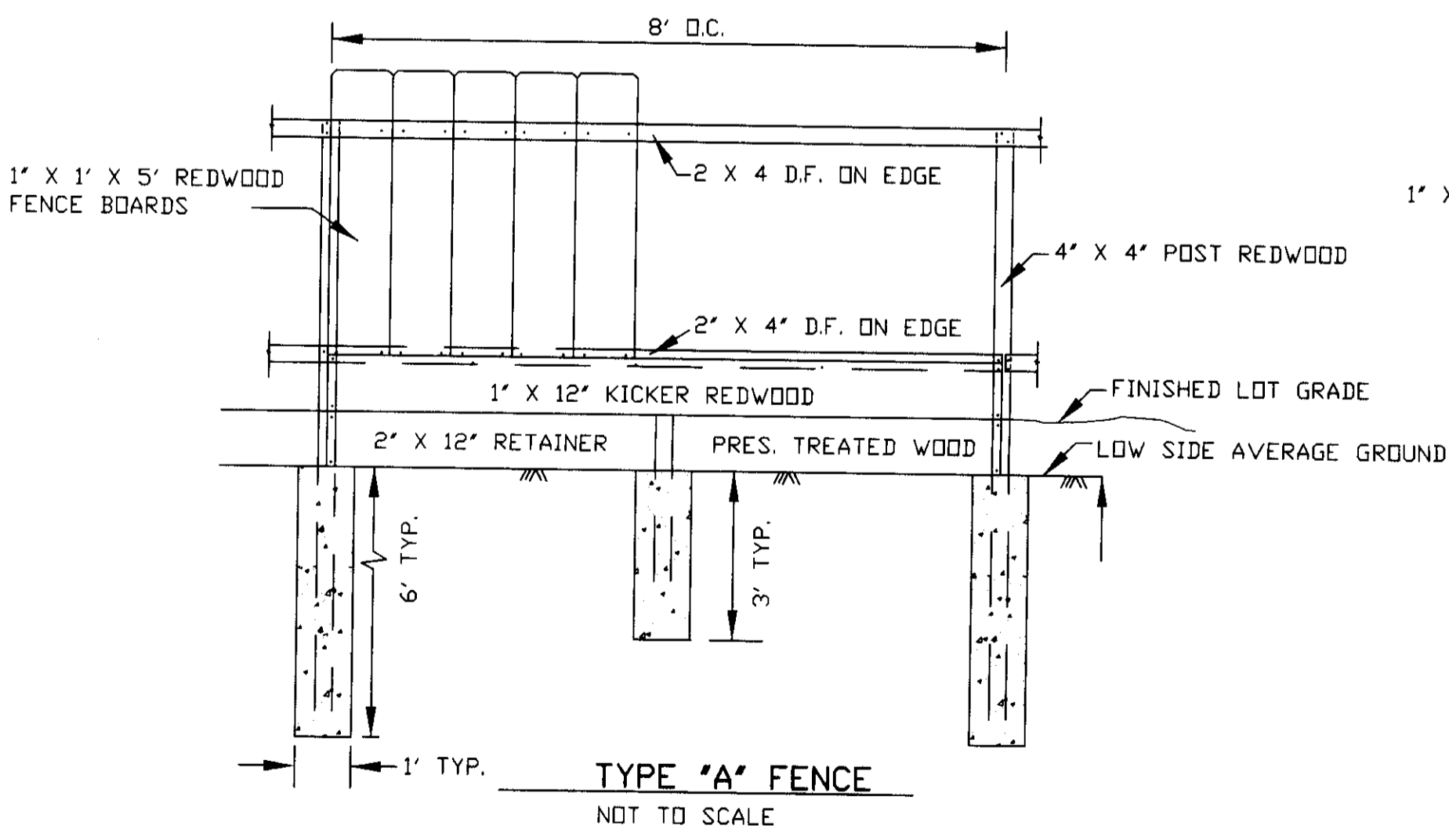
TOP OF CURB GRADES ARE BASED ON ROLL CURB WHICH IS 0.38' ABOVE GUTTER FLOW LINE. AT ROUND CORNERS AND CATCH BASINS ADD 0.12' TO TOP OF CURB GRADES TO OBTAIN 0.50' ABOVE GUTTER FLOW LINE.



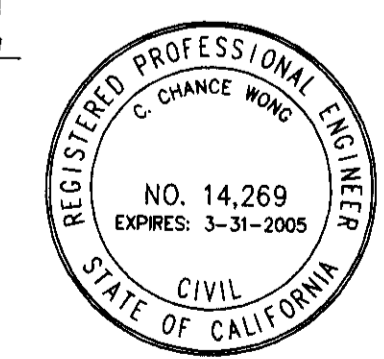
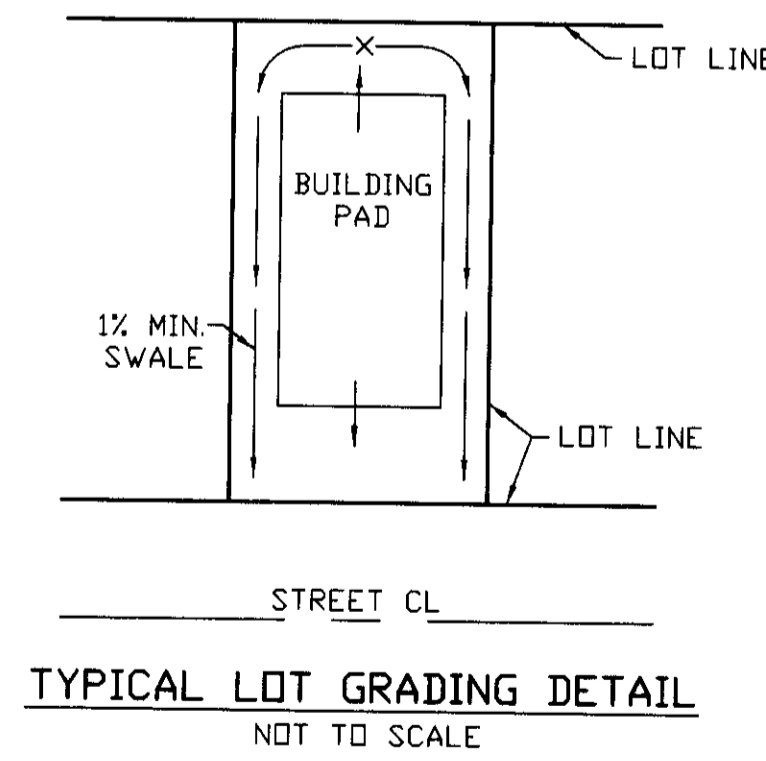
- ① 2" X 12" PRESSURE TREATED WOOD RETAINER.
- ② 1" X 12" REDWOOD KICKER BOARD
- ③ SHORT 4" X 4" POST FOR 2" X 12" RETAINER AT 8' O.C.



- ① 1" X 12" REDWOOD KICKER BOARD



1. RETAINING WALL SHALL BE CONSTRUCTED ON FIRM, UNDISTURBED SOIL, COMPACTED TO 90% RELATIVE COMPACTION.
2. WEAKENED PLANE JOINTS SHALL BE CONSTRUCTED 60' C.C.
3. ALL ROCK POCKETS SHALL BE FILLED AND FINS REMOVED ON EXPOSED WALL. TOP OF WALL SHALL BE MOUNDED AND TROWELED SMOOTH.
4. WALL SHALL NOT BE BACKFILLED FOR THREE DAYS AFTER POUR.



SU 3682

**UNAUTHORIZED CHANGES AND USES:**  
THE ENGINEER PREPARING THESE PLANS WILL NOT BE RESPONSIBLE FOR, OR LIABLE FOR, UNAUTHORIZED CHANGES TO OR USES OF THESE PLANS. ALL CHANGES TO THE PLANS MUST BE IN WRITING AND MUST BE APPROVED BY THE PREPARER OF THESE PLANS.

REVISIONS			
NO.	DESCRIPTION	DATE	BY

**WONG ENGINEERS, INC.**  
PLANNING ENGINEERING SURVEYING  
4578 FEATHER RIVER DRIVE, SUITE A  
STOCKTON, CALIFORNIA  
(209)476-0011  
DATE: 8-7-2002  
R.C.E. 14269

JOB NO.: 3338  
DATE: JULY 2002  
SCALE: 1"=40'  
DRAWN: WMK/SE  
DESIGN: WE  
CHECKED: CCW

TRACT NO. 3172  
MICHAEL ESTATES

SAN JOAQUIN COUNTY,  
CALIFORNIA

**GRADING PLAN**

SHEET  
**2**  
OF  
SIX  
FILE

3rd SUBMITTAL  
PLOTTED 10-29-2002  
33386.DWG

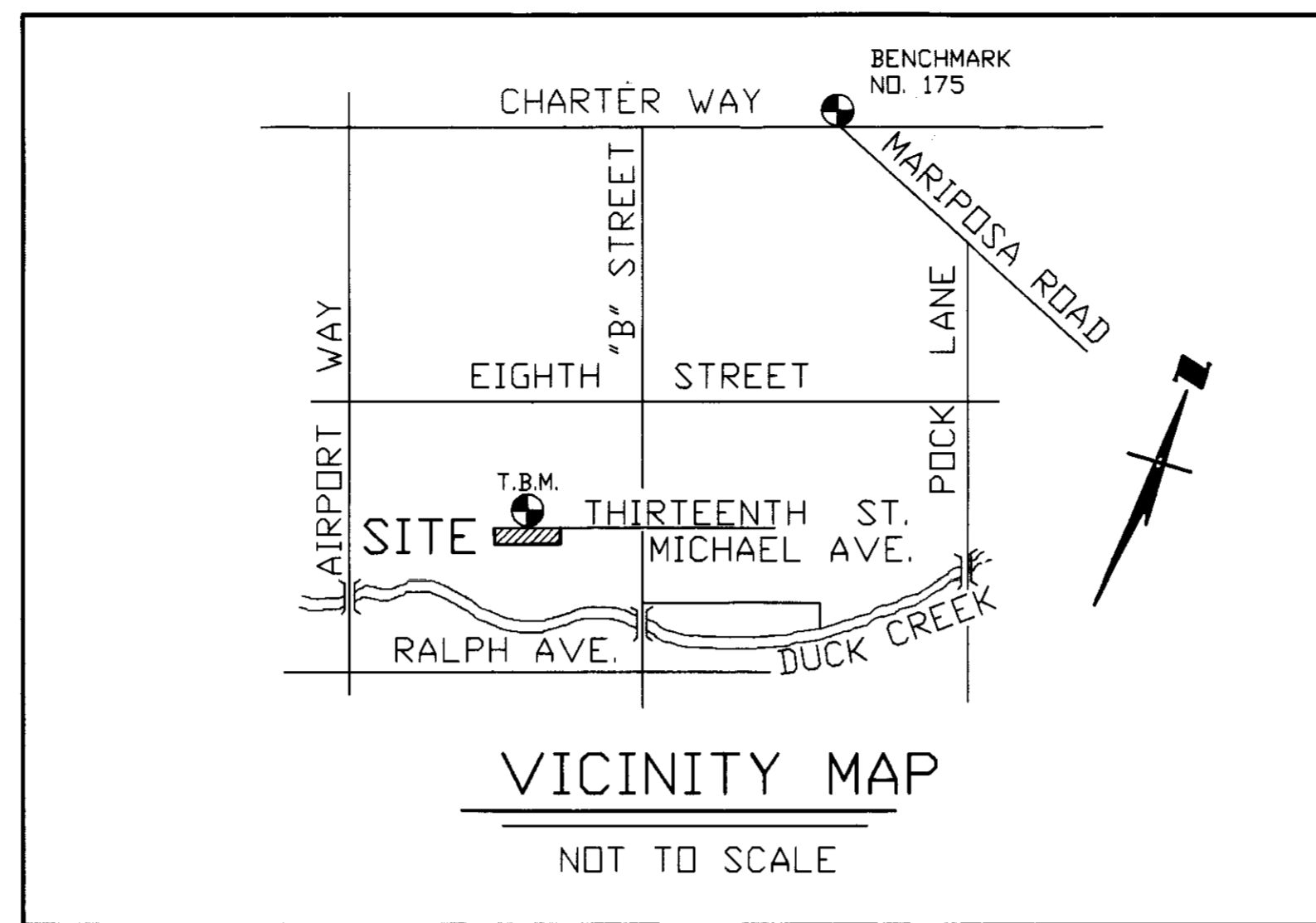
SEE TECHNICAL SPECIFICATIONS FOR AGGREGATE BASE AND ASPHALT CONCRETE

# MICHAEL ESTATES IMPROVEMENT PLANS

## GENERAL NOTES:

- ALL IMPROVEMENTS SHALL BE CONSTRUCTED IN STRICT ACCORDANCE WITH COUNTY OF SAN JOAQUIN STANDARD SPECIFICATION AND PLANS, 1997 EDITION, AND ALL AMENDMENTS THERETO TO DATE. ALL WORK SHALL BE DONE UNDER THE INSPECTION OF THE COUNTY OF SAN JOAQUIN DEPARTMENT OF PUBLIC WORKS OR BUILDING DEPARTMENT.
- ELEVATIONS SHOWN ARE 1929 NGVD DATUM (CITY OF STOCKTON BENCHMARK). BENCHMARK IS AS SHOWN ON SHEET 2.
- DRAWING NUMBERS SHOWN ON PLAN REFER TO COUNTY OF SAN JOAQUIN STANDARD DETAILS.
- THE CONTRACTOR SHALL BE RESPONSIBLE FOR PROTECTING FROM DAMAGE ALL EXISTING IMPROVEMENTS THAT ARE TO REMAIN. SUCH IMPROVEMENTS THAT ARE DAMAGED BY THE CONTRACTOR SHALL BE REPLACED AT HIS EXPENSE.
- CONTRACTOR SHALL OBTAIN AN ENCROACHMENT PERMIT FROM THE COUNTY OF SAN JOAQUIN PUBLIC WORKS DEPARTMENT, AND SHALL NOTIFY COUNTY 24 HOURS IN ADVANCE OF PERFORMING ANY WORK REQUIRED WITHIN THE PUBLIC RIGHT-OF-WAY.
- WORK IN STREET RIGHT-OF-WAY IS SUBJECT TO THE APPROVAL AND ACCEPTANCE OF THE COUNTY OF SAN JOAQUIN PUBLIC WORKS DEPARTMENT.
- CONTRACTOR SHALL DEMOLISH, EXCAVATE, REMOVE AND DISPOSE OF ANY EXISTING CONCRETE OR ASPHALT CONCRETE PAVING, CONCRETE CURB, GUTTER AND SIDEWALK AND DELETERIOUS MATERIAL AS REQUIRED TO CONSTRUCT THE CONTRACT WORK, ALL EXCESS MATERIAL GENERATED BY DEMOLITION, EXCAVATION AND GRADING SHALL BE DISPOSED OF BY THE CONTRACTOR.
- EXCAVATION OF 5' OR MORE IN DEPTH WILL REQUIRE AN EXCAVATION PERMIT FROM THE STATE OF CALIFORNIA DEPARTMENT OF INDUSTRIAL SAFETY.
- THE PRICE BID FOR THIS WORK SHALL INCLUDE THE COST FOR ANY AND ALL PERMITS REQUIRED TO COMPLETE THE PROJECT WORK.
- EXISTING UTILITIES ARE SHOWN AS THEY ARE BELIEVED TO EXIST. THE OWNER AND THE ENGINEER DO NOT ACCEPT RESPONSIBILITY FOR THEIR ACCURACY. PRIOR TO COMMENCING ANY WORK, IT SHALL BE THE CONTRACTOR'S RESPONSIBILITY TO LOCATE THE EXISTING MAIN AND SERVICE LINES.
- PAYMENT FOR PAVEMENT WILL BE MADE ONLY FOR AREAS SHOWN ON THE PLANS. REPLACEMENT OF PAVEMENT WHICH IS BROKEN OR CUT IN THE INSTALLATION OF THE WORK COVERED IN THESE SPECIFICATIONS, AND WHICH LIES OUTSIDE OF SAID AREAS, SHALL BE INCLUDED IN THE CONTRACTOR'S UNIT PRICE OF PAVEMENT, AND NO ADDITIONAL PAYMENT SHALL BE MADE FOR SUCH WORK.
- CONTRACTOR AGREES THAT HE SHALL ASSUME SOLE AND COMPLETE RESPONSIBILITY FOR JOBSITE CONDITIONS DURING THE COURSE OF CONSTRUCTION OF THIS PROJECT, INCLUDING SAFETY OF ALL PERSONS AND PROPERTY, THAT THIS REQUIREMENT SHALL APPLY CONTINUOUSLY AND NOT BE LIMITED TO NORMAL WORKING HOURS, AND THAT THE CONTRACTOR SHALL DEFEND, INDEMNIFY AND HOLD THE OWNER, COUNTY AND THE ENGINEER HARMLESS FROM ANY AND ALL LIABILITY, REAL OR ALLEGED, IN CONNECTION WITH THE PERFORMANCE OF WORK ON THIS PROJECT, EXCEPTING FOR LIABILITY ARISING FROM THE SOLE NEGLIGENCE OF THE OWNER OR THE ENGINEER.
- WE CALL YOUR ATTENTION TO SECTION 154060(1) OF THE CONSTRUCTION SAFETY ORDERS (TITLE 8 CALIFORNIA ADMINISTRATION CODE SECTION 1540), ISSUED BY THE OCCUPATIONAL SAFETY AND HEALTH STANDARDS, BOARD PURSUANT TO THE CALIFORNIA OCCUPATIONAL SAFETY AND HEALTH ACT OF 1973, AS AMENDED, WHICH STATES: "PRIOR TO OPENING AN EXCAVATION, EFFORT SHALL BE MADE TO DETERMINE WHETHER UNDERGROUND INSTALLATIONS, I.E. SEWER, WATER, FUEL, ELECTRIC LINES, ETC., WILL BE ENCOUNTERED AND, IF SO, WHERE SUCH UNDERGROUND INSTALLATIONS ARE LOCATED. WHEN THE EXCAVATION APPROACHES THE APPROXIMATE LOCATION OF SUCH INSTALLATION, THE EXACT LOCATION SHALL BE DETERMINED BY CAREFUL PROBING OR HAND DIGGING; AND WHEN IT IS UNCOVERED, ADEQUATE PROTECTION SHALL BE PROVIDED FOR THE EXISTING INSTALLATION. ALL KNOWN OWNERS OF UNDERGROUND FACILITIES IN THE AREA CONCERNED SHALL BE ADVISED OF PROPOSED WORK AT LEAST 48 HOURS PRIOR TO THE START OF ACTUAL EXCAVATION."
- PRIOR TO FINAL INSPECTION CONTRACTOR SHALL SUBMIT AS-BUILT INFORMATION FOR ANY CHANGES TO WONG ENGINEERS, INC.
- DUST CONTROL SHALL BE PERFORMED AT ALL TIMES, AT THE CONTRACTOR'S EXPENSE, TO MINIMIZE ANY DUST NUISANCE AND SHALL BE IN ACCORDANCE WITH SECTION 10 OF CALTRANS STANDARD SPECIFICATIONS AND THE REQUIREMENTS OF SAN JOAQUIN COUNTY. THE CONTRACTOR SHALL OBTAIN A PERMIT OR PERMISSION FROM THE CALIFORNIA WATER SERVICE COMPANY FOR USE OF WATER FROM FIRE HYDRANTS FOR CONSTRUCTION PURPOSES. THE PERMIT OR APPROVAL SHALL BE APPROVED BY THE FIRE DEPARTMENT.
- A TRAFFIC CONTROL PLAN (TCP) SHALL BE SUBMITTED TO AND DEEMED ACCEPTABLE BY COUNTY PRIOR TO START OF WORK. THIS SHALL ADDRESS ALL PHASES OF WORK, WHICH WILL IMPACT PUBLIC TRAFFIC. CONFORMANCE WITH THE TCP SHALL BE MAINTAINED AT ALL TIMES.
- ALL TRAFFIC SIGNS AND MARKINGS SHALL CONFORM TO THE "MANUAL ON UNIFORM TRAFFIC CONTROL DEVICES AND SAN JOAQUIN COUNTY STANDARDS" AND AS SHOWN ON THE PLANS.

TO BE CONST.	DESCRIPTION	EXISTING
	MONUMENT FRAME & COVER	
	DUCTILE IRON PIPE	
	CENTERLINE	
	EDGE OF PAVEMENT	
	CURB, GUTTER & SIDEWALK WITH HANDICAP RAMP	
	AGGREGATE BASE	
	SURVEY MONUMENT	
	DRIVEWAY	
	FENCE	
	ELECTROLIER	
	UTILITY POLE	
	TELEPHONE CABLE	
	CABLE TELEVISION	
	WATER LINE	
	WATER VALVE	
	WATER BLOWOFF	
	FIRE HYDRANT	
	WATER SERVICE	
	WATER METER	
	SEWER LINE	
	SANITARY MAINTENANCE HOLE	
	SANITARY MAIN CLEAN OUT	
	SEWER LATERAL	
	STORM DRAIN LINE	
	STORM MAINTENANCE HOLE	
	CURB INLET OR CATCH BASIN	
	GAS LINE	
	GAS VALVE	
	PAD GRADE	



### ABBREVIATIONS

A.C.	ASPHALTIC CONCRETE
A.B.	AGGREGATE BASE
C.B.	CATCH BASIN
C.L.	CENTER LINE
CONST.	CONSTRUCT
C.O.S.	CITY OF STOCKTON
(N)	NORTH
(S)	SOUTH
(E)	EAST
(W)	WEST
F.L.	FLOW LINE
F.H.	FIRE HYDRANT
INV.	INVERT
SDMH	STORM DRAIN MAINTENANCE HOLE
S.P.N.	STANDARD PLAN NUMBER
SSMH	SANITARY SEWER MAINTENANCE HOLE
TC	TOP OF CURB
(TYP.)	TYPICAL
TBM	TEMPORARY BENCHMARK
BM	BENCHMARK
D.I.P.	DUCTILE IRON PIPE
R.O.W.	RIGHT-OF-WAY
N.T.S.	NOT TO SCALE

### CITY OF STOCKTON-SANITARY SEWER NOTES:

- SANITARY SEWER IMPROVEMENTS SHOWN SHALL BE CONSTRUCTED IN STRICT ACCORDANCE WITH THE CITY OF STOCKTON STANDARD SPECIFICATIONS AND PLANS, 2002 EDITION, AND AMENDMENTS TO DATE. SANITARY SEWER LINE WORK SHALL BE DONE UNDER THE INSPECTION OF THE CITY OF STOCKTON PUBLIC WORKS DEPARTMENT OR BUILDING DEPARTMENT. TRENCHING AND BACKFILL SHALL BE DONE UNDER THE INSPECTION OF THE CITY OF STOCKTON AND SAN JOAQUIN COUNTY AND SHALL COMPLY WITH THE SAN JOAQUIN COUNTY STANDARDS.
- THE CONTRACTOR SHALL CONTACT KEN MOECKEL AT 937-8381 AT THE CITY OF STOCKTON AND SAN JOAQUIN COUNTY REPRESENTATIVE FOR A PRECONSTRUCTION CONFERENCE 72 HRS IN ADVANCE.
- CONTRACTOR TO OBTAIN PERMIT FROM THE CITY OF STOCKTON FOR CONSTRUCTION OF THE SANITARY SEWER IMPROVEMENTS.

### UTILITY SERVICES PROVIDED BY:

- STORM DRAINAGE: SAN JOAQUIN COUNTY
- STREET LIGHTING: ASH STREET LIGHTING MAINTENANCE DISTRICT
- ELECTRICITY: P.G.&E.
- NATURAL GAS: P.G.&E.
- TELEPHONE: PACIFIC BELL
- SANITARY SEWER: CITY OF STOCKTON
- WATER: CALIFORNIA WATER SERVICE COMPANY

### GRADING NOTES:

- LUMPSUM BID FOR GRADING AND LAND STABILIZATION SHALL INCLUDE EXCAVATION AND FILL OF PAVED AREAS WITHIN THE SITE AND ANY EXCESS EXCAVATION SHALL BE DISPOSED OF BY THE CONTRACTOR.
- EARTHWORK: THE CONTRACTOR SHALL EXCAVATE, FILL AND GRADE THE PROJECT SITE IN ORDER THAT SITE IMPROVEMENTS CAN BE CONSTRUCTED TO THE GRADES AND SLOPES SHOWN ON THESE PLANS. ALTHOUGH NO ATTEMPT HAS BEEN MADE TO BALANCE EARTH CUT AND FILL QUANTITIES, DUE TO THE APPROXIMATIONS OF EXISTING GRADES AND OTHER CONDITIONS NOT PRECISELY KNOWN THE ENGINEER DOES NOT GUARANTEE THAT SUCH CUT AND FILL QUANTITIES WILL BALANCE. AS EARTH WORK OPERATIONS PROGRESS, MINOR ADJUSTMENTS IN GRADES MAY BE MADE IN ORDER TO BRING THE CUT AND FILL QUANTITIES MORE IN BALANCE, BUT SUCH CHANGES CAN ONLY BE MADE AFTER APPROVAL OF THE OWNER AND THE ENGINEER. THE COST OF SUCH ADJUSTMENTS SHALL BE PAID BY THE CONTRACTOR AND NO EXTRA PAYMENT WILL BE ALLOWED. ANY SURPLUS EARTH MATERIAL SHALL BE DISPOSED OF AS DIRECTED BY THE ENGINEER AT THE CONTRACTOR'S EXPENSE. ANY ADDITIONAL EARTH MATERIAL NEEDED TO COMPLETE THE ONSITE GRADING SHALL BE PROVIDED AND PAID FOR BY THE CONTRACTOR. ANY FILL PLACED SHALL BE PROPERLY COMPACTED AS REQUIRED BY THE PLANS AND THESE SPECIFICATIONS:
  - EARTH FILL TO ESTABLISH PAVED AREA SUBGRADE SHALL BE COMPACTED TO A MINIMUM RELATIVE COMPACTION OF 90% EXCEPT THAT THE AREA WITHIN 6" BELOW SUBGRADE SHALL BE COMPACTED TO A MINIMUM RELATIVE COMPACTION OF 95%.
  - EARTH FILL TO ESTABLISH FINISHED GRADE OUTSIDE THE PAVED AREAS SHALL BE COMPACTED TO A MINIMUM RELATIVE COMPACTION OF 80%.
  - FILL AND COMPACTION IN THE BUILDING AREA SHALL BE IN ACCORDANCE WITH THE UNIFORM BUILDING CODE.
- CONTRACTOR TO PERFORM COMPACTION TESTS TO CONFORM TO SECTION 2(A-C)
- ALL GRADING SHALL COMPLY WITH 1997 U.B.C. CHAPTER 18 AND APPENDIX CHAPTER 33.
- NO SLOPE SHALL BE STEEPER THAN 2 HORIZONTAL TO 1 VERTICAL.
- REFER TO GEOTECHNICAL INVESTIGATION REPORT BY KLEINFELDER (FILE NO. 20-3470-01) TO DETERMINE LOT GRADING, SITE PREPARATION AND FOUNDATION RECOMMENDATION.

### CONSTRUCTION STAKING:

- CONSTRUCTION STAKING IS NORMALLY PERFORMED BY THE ENGINEER WHO PREPARED THE PLAN. THIS PERMITS APPROPRIATE ON-SITE INTERPRETATION AND ADJUSTMENT OF THE PLANS, IF NECESSARY. THIS NOTE GIVES FORMAL NOTICE THAT THE FIRM OF WONG ENGINEERS, INC., CANNOT AND WILL NOT, TAKE RESPONSIBILITY FOR ERRORS OR OMISSIONS, IF ANY, WHICH MIGHT OCCUR AND WHICH COULD HAVE BEEN AVOIDED OR DETECTED AND/OR CORRECTED AND MITIGATED HAD WONG ENGINEERS, INC., PERFORMED THE CONSTRUCTION STAKING WORK.
- ALL REFERENCES TO CONTRACTOR SHALL MEAN CONTRACTOR FOR SITEWORK SHOWN ON THESE CIVIL PLANS ONLY.
- IF WONG ENGINEERS, INC. IS RETAINED TO DO THE CONSTRUCTION STAKING, WONG ENGINEERS, INC. WILL SET ALL STAKES AND PROVIDE CUT SHEETS FOR THIS PROJECT. IT IS EXPECTED THAT ONE SET OF STAKES WILL BE SUFFICIENT FOR EACH PHASE OF THE PROJECT. CARE SHOULD BE TAKEN TO PROTECT STAKES. THE COST OF STAKING IS BORNE BY THE DEVELOPER. THE CONTRACTOR SHALL REQUEST STAKES FROM WONG ENGINEERS, INC. WHEN HE IS READY TO USE THEM AND SHALL BE RESPONSIBLE FOR THEIR PRESERVATION FOR HIS FUTURE USE. SAID REQUEST MUST BE MADE AT LEAST 72 HOURS PRIOR TO THE TIME THE STAKES WILL BE REQUIRED. SHOULD THE WORK NEED TO BE RESTAKED, FOR THE CONTRACTOR'S USE, THE CONTRACTOR SHALL BE RESPONSIBLE TO WONG ENGINEERS, INC. FOR THE COST OF RESTAKING. SHOULD THE CONTRACTOR DESTROY STAKES WHICH ARE NEEDED FOR IMPROVEMENTS OTHER THAN HIS OWN, HE SHALL ALSO BE RESPONSIBLE FOR THE COST OF RESTAKING TO RETURN THE JOB TO ITS ORIGINAL CONDITION.

SANITARY SEWER ONLY	
APPROVED <i>August 23, 2002</i> <i>Finbarr J. O'Regan</i> FINBARR J. O'REGAN, CITY ENGINEER CITY OF STOCKTON	APPROVED <i>Steve Dalton</i> STEVE DALTON SAN JOAQUIN FIRE BUREAU OF FIRE PROTECTION
COUNTY OF SAN JOAQUIN DEPARTMENT OF PUBLIC WORKS	
APPROVED <i>Gabriel Barram</i> SENIOR CIVIL ENGINEER R.C.E. NO. 33172 EXP. DATE: 6/30/06	APPROVED BY: MONTEZUMA FIRE DISTRICT <i>Edith Matt - def</i> SIGNATURE DATE: 8/13/02
COUNTY OF SAN JOAQUIN DEPARTMENT OF PUBLIC WORKS	
APPROVED <i>[Signature]</i> DIRECTOR OF PUBLIC WORKS R.C.E. NO. 2334 EXP. DATE: 12/31/01	APPROVED <i>[Signature]</i> 2002 CALIFORNIA WATER SERVICE REFER TO CALIFORNIA WATER SERVICE PLAN (FACILITIES-STK 8191)

UNAUTHORIZED CHANGES AND USES:  
THE ENGINEER PREPARING THESE PLANS WILL NOT BE RESPONSIBLE FOR, OR LIABLE FOR, UNAUTHORIZED CHANGES TO OR USES OF THESE PLANS. ALL CHANGES TO THE PLANS MUST BE IN WRITING AND MUST BE APPROVED BY THE PREPARER OF THESE PLANS.



ASSESSOR'S PARCEL NO. 171-180-41  
REFER TO MAJOR SUBDIVISION APPLICATION NO. SU-01-5

SHEET INDEX:	
SHEET 1	TITLE SHEET
SHEET 2	GRADING PLAN
SHEET 3	THIRTEENTH STREET STA 5+18.94 TO STA 11+49.16 BIEGHLE STREET STA 0+00 TO 1+89.79
SHEET 4	EROSION CONTROL/DETAIL SHEET
SHEET 5	DETAIL SHEET
SHEET 6	DETAIL SHEET

NO.	DESCRIPTION	COUNTY APPROVAL	
		APPROVED BY	DATE

**WONG ENGINEERS, INC.**  
PLANNING ENGINEERING SURVEYING  
4578 FEATHER RIVER DRIVE, SUITE A  
STOCKTON, CALIFORNIA  
(209)476-0011

DATE 8-7-2002  
R.C.E. 14269

JOB NO. 3338	TRACT 3172	SAN JOAQUIN COUNTY, CALIFORNIA	SHEET 1
DATE: JULY 2002	MICHAEL ESTATES		OF SIX
SCALE: NONE			FILE
DRAWN: WMK/SE			
DESIGN: WE			
CHECKED: ZCW			

SU 3683

3rd SUBMITTAL  
3338TITLE.DWG  
PLOTTED: 08-7-2002