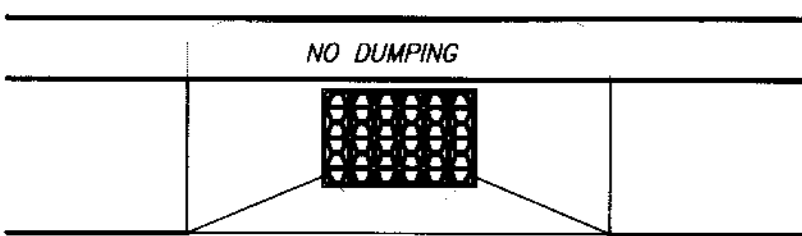
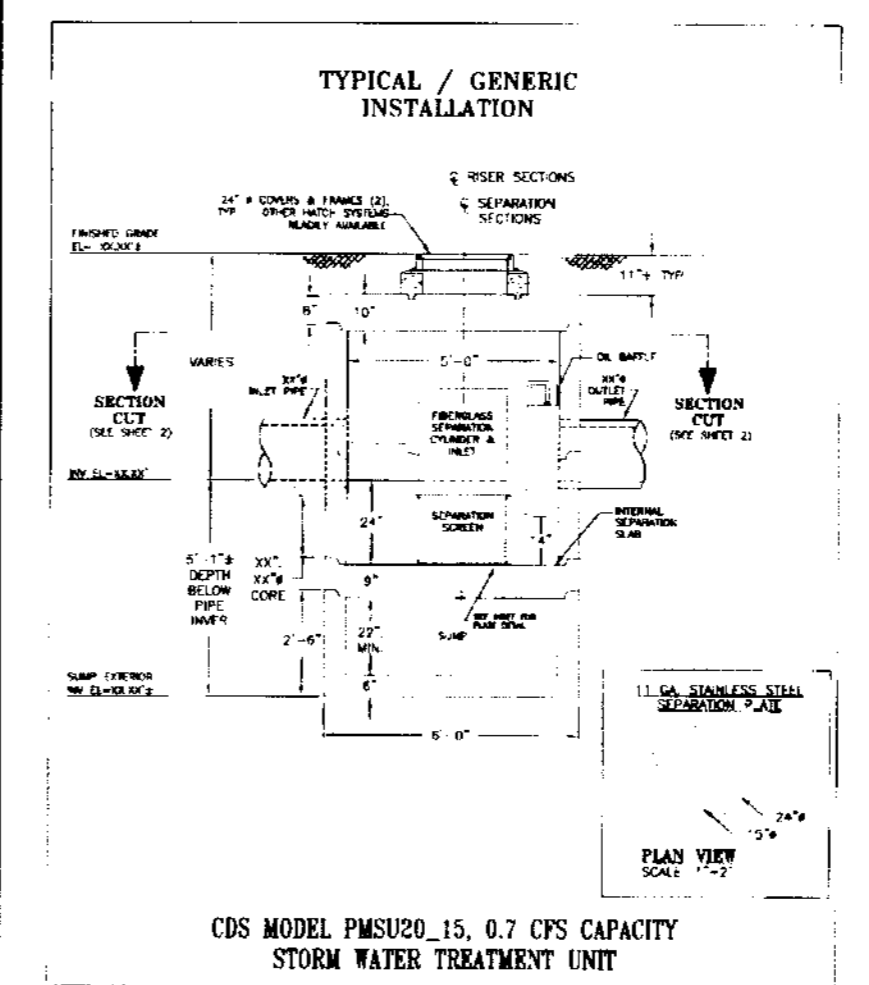
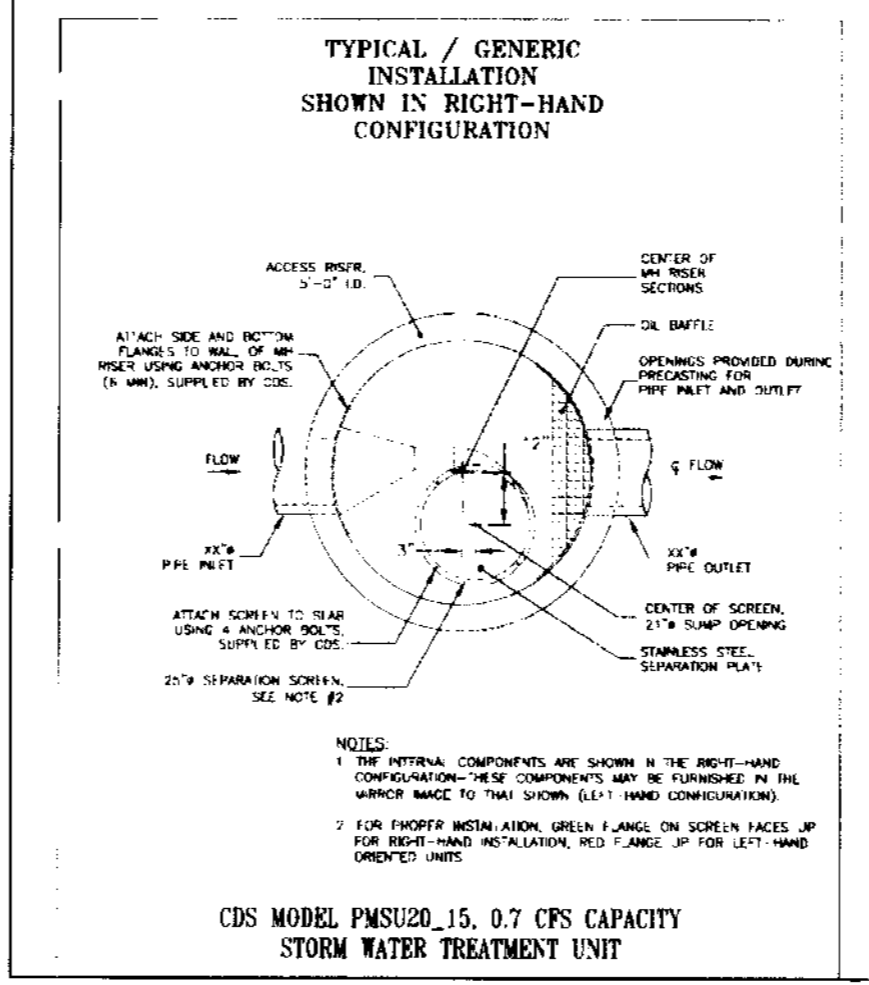
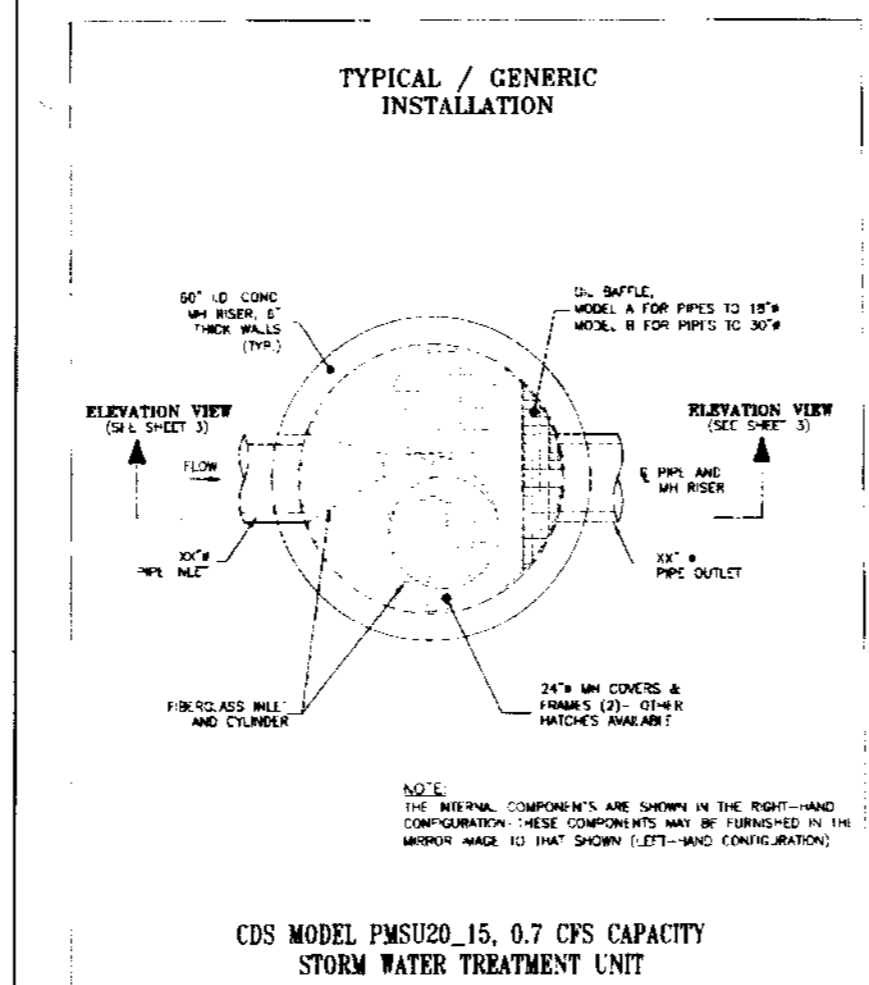
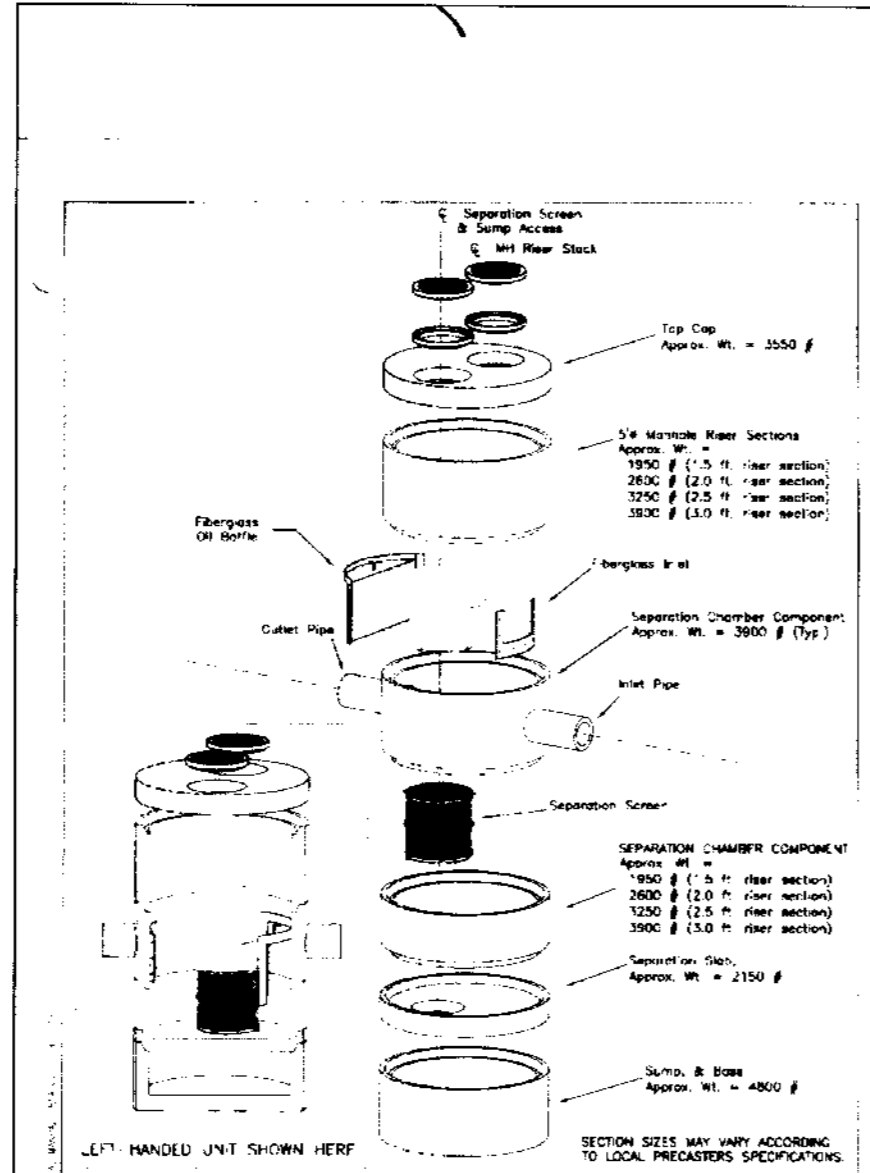


NOTE:
ALL CURB INLETS SHALL HAVE "NO DUMPING" STENCILED IN CONCRETE CURB AT HOOD LOCATION WITH 3" MINIMUM LETTER HEIGHT



CURB INLET STENCILING DETAIL



SCALE 1" = 50'

RECORD DRAWING
Prepared by Ernest Killgus
Date 02-10-06
Any Person Using This Drawing Should Verify All Information By Inspecting The City of Wells

LEGEND

	EXISTING	PROPOSED	FUTURE
CURB INLET (SJ CO. STD. D-13)			N/A
STANDARD MAINTENANCE HOLE (TYP.)			N/A
STORM DRAIN			
LENGTH, SIZE & SLOPE	XX LF XX" SD S=XXX	XX LF XX" SD S=XXX	XX LF XX" SD S=XXX
STORM DRAIN MAINTENANCE HOLE OR STRUCTURE (TYP.) NUMBER	N/A	N/A	N/A

PERMANENT BMP PLAN

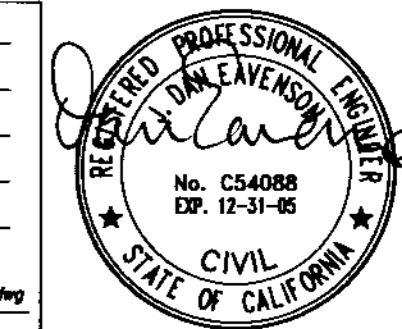
FLOR RANCH
UNIT NO. 3
LINDEN, CALIFORNIA

REVISIONS

NO.	DESCRIPTIONS	DATE	APPROVED

MCR MCR Engineering, Inc.
PLANNING • ENGINEERING • SURVEYING
322 San West Place • Manteca, California 95337
(209) 230-6229 • FAX (209) 230-6830

JOB NO. 05-034
DATE 06/06/2005 08:21
SCALE AS SHOWN
DRL BY PAR
CHK BY DE
FILE: J:\2005\05-034\dwg\1017-storm.dwg



SHEET NUMBER
1
OF 1

9/6/05