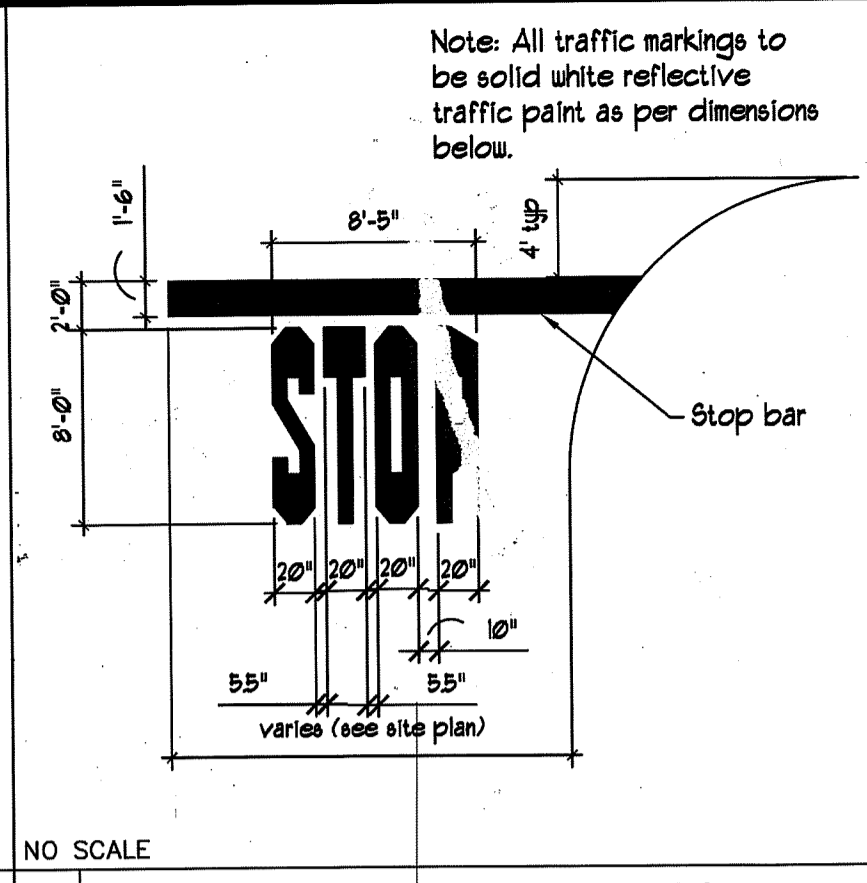
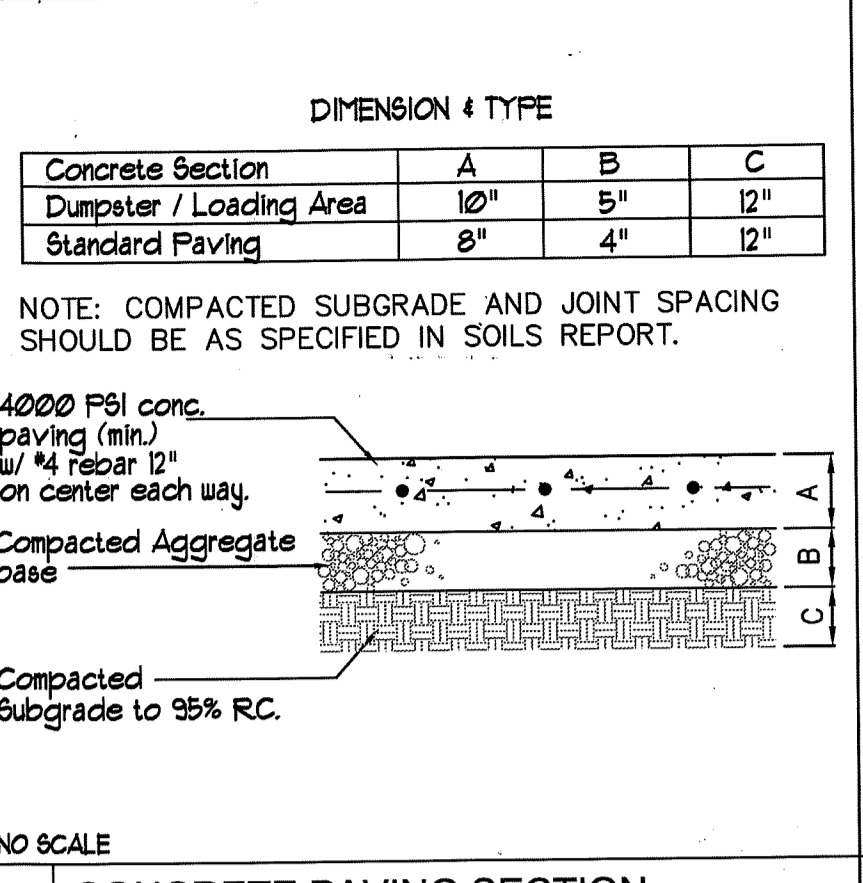


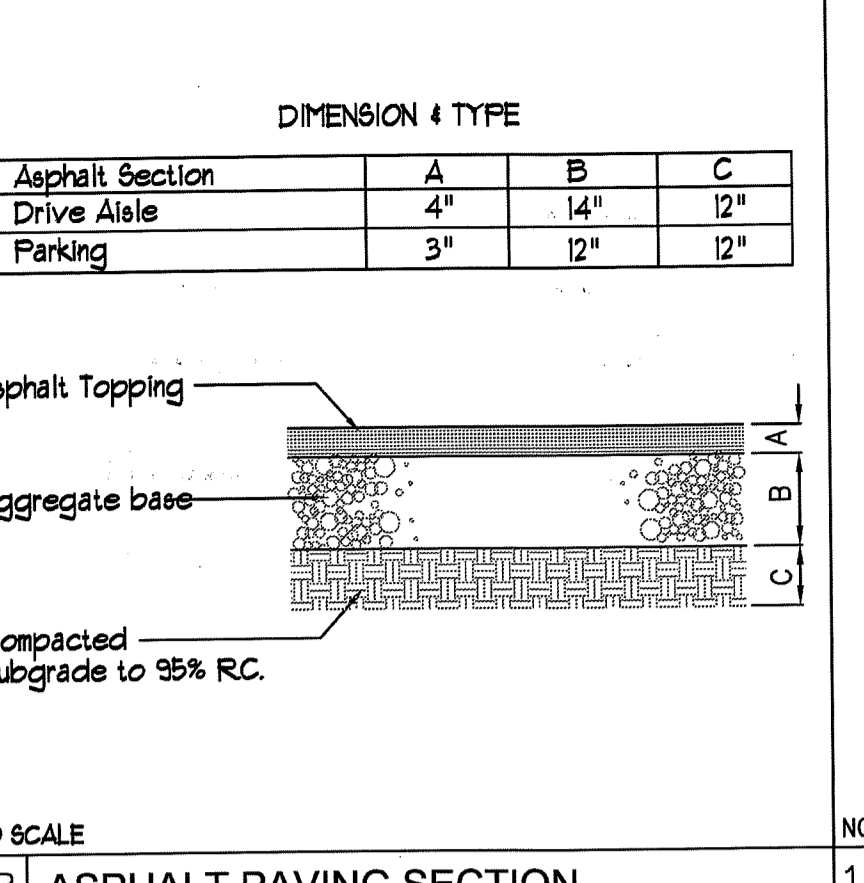
23 TYPICAL PAVEMENT MARKINGS



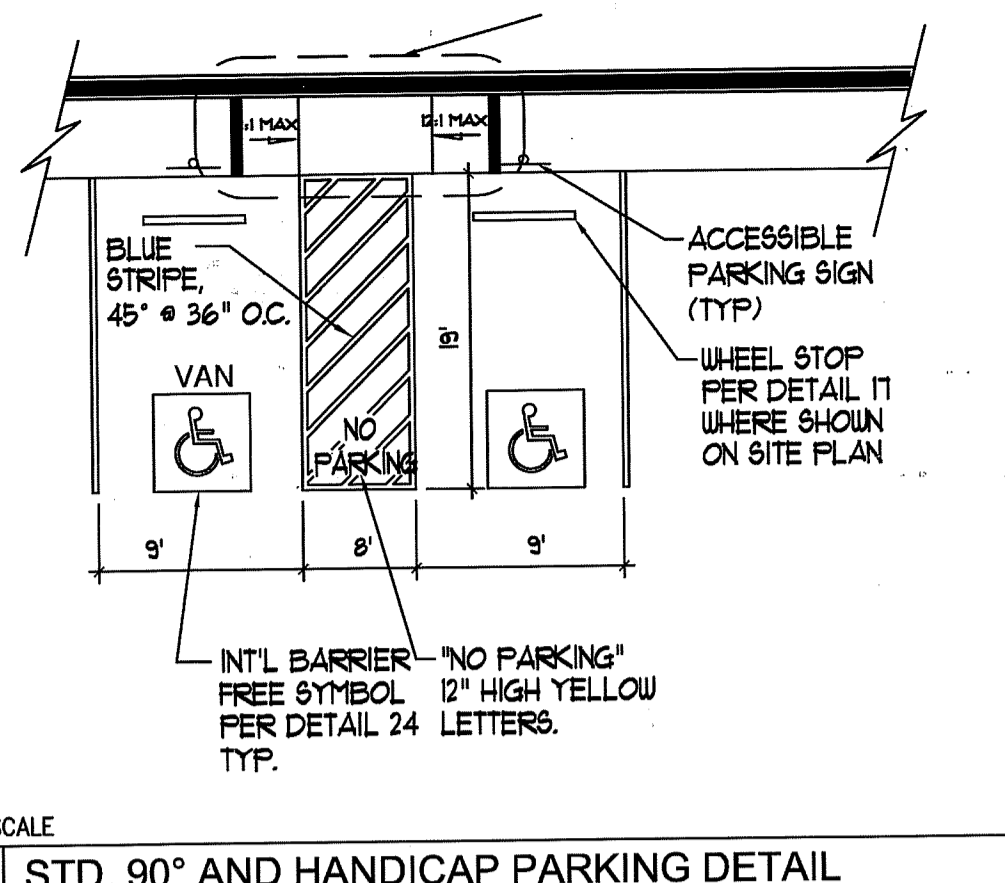
16 TYPICAL PAVEMENT MARKINGS



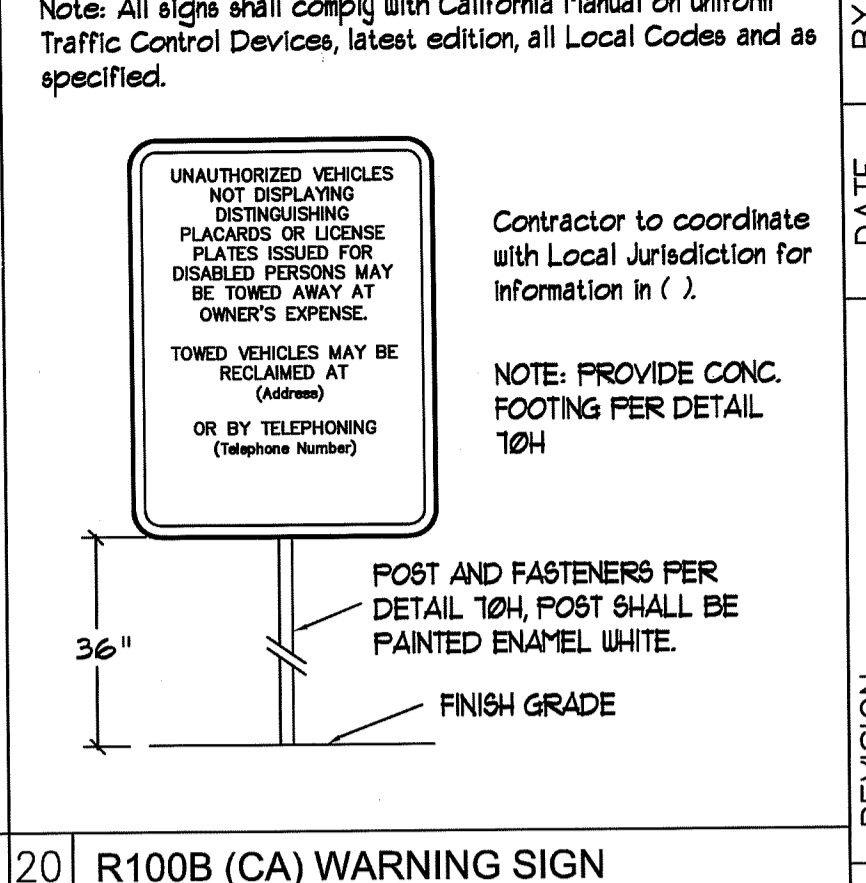
17 CONCRETE PAVING SECTION



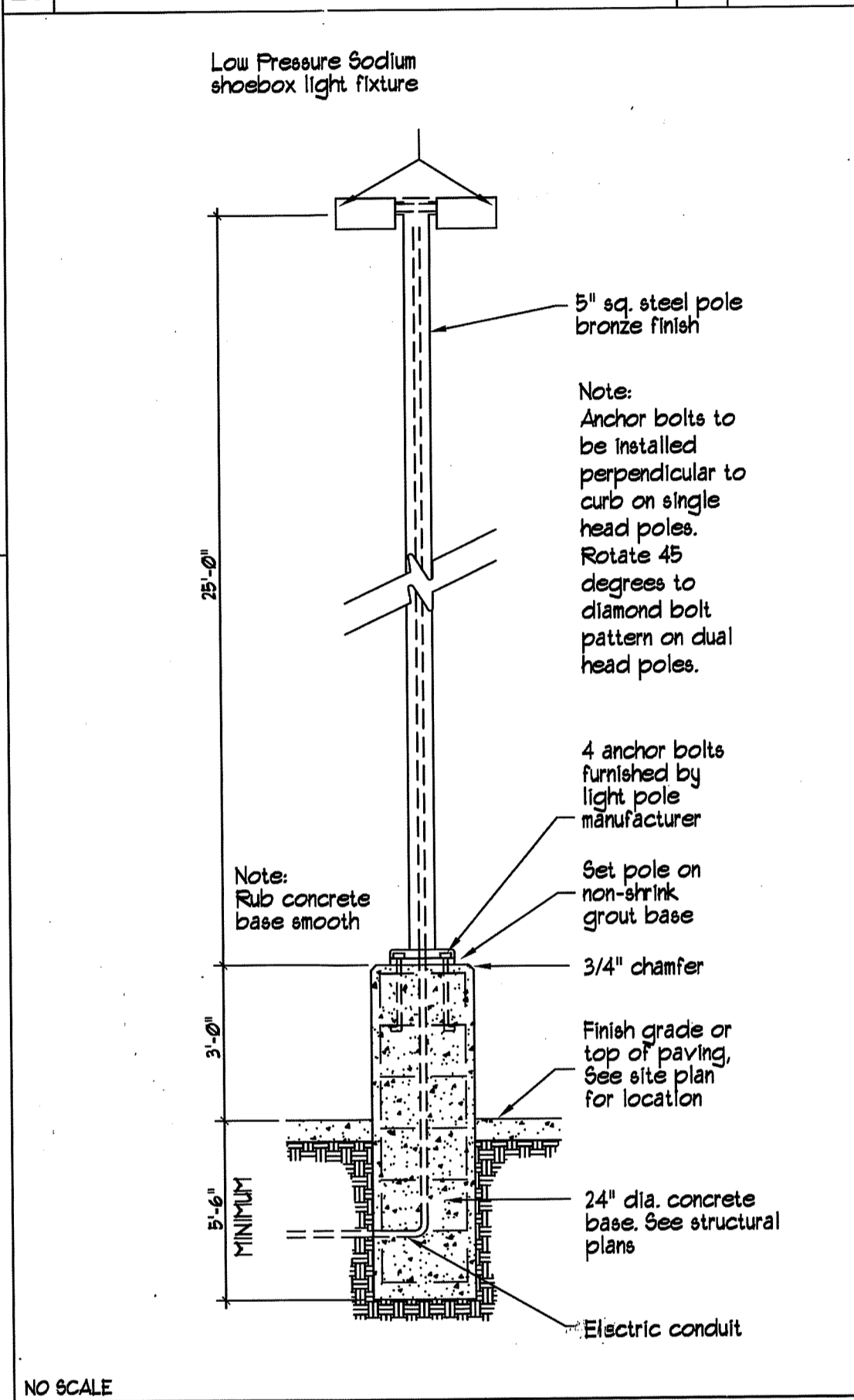
18 ASPHALT PAVING SECTION



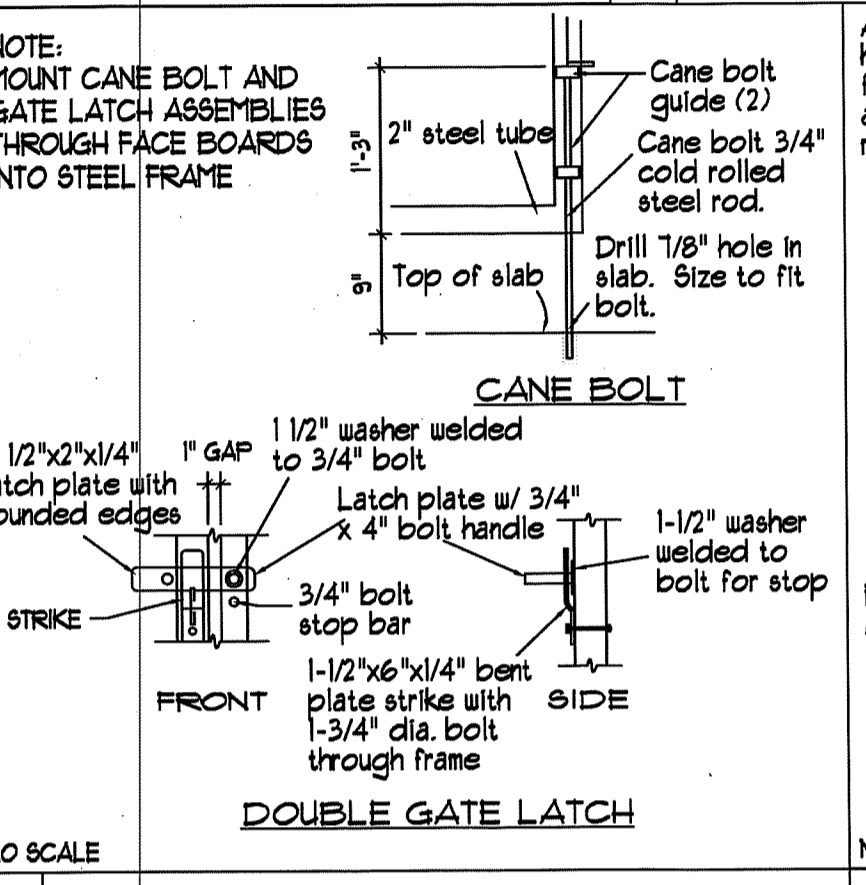
19 STD. 90° AND HANDICAP PARKING DETAIL



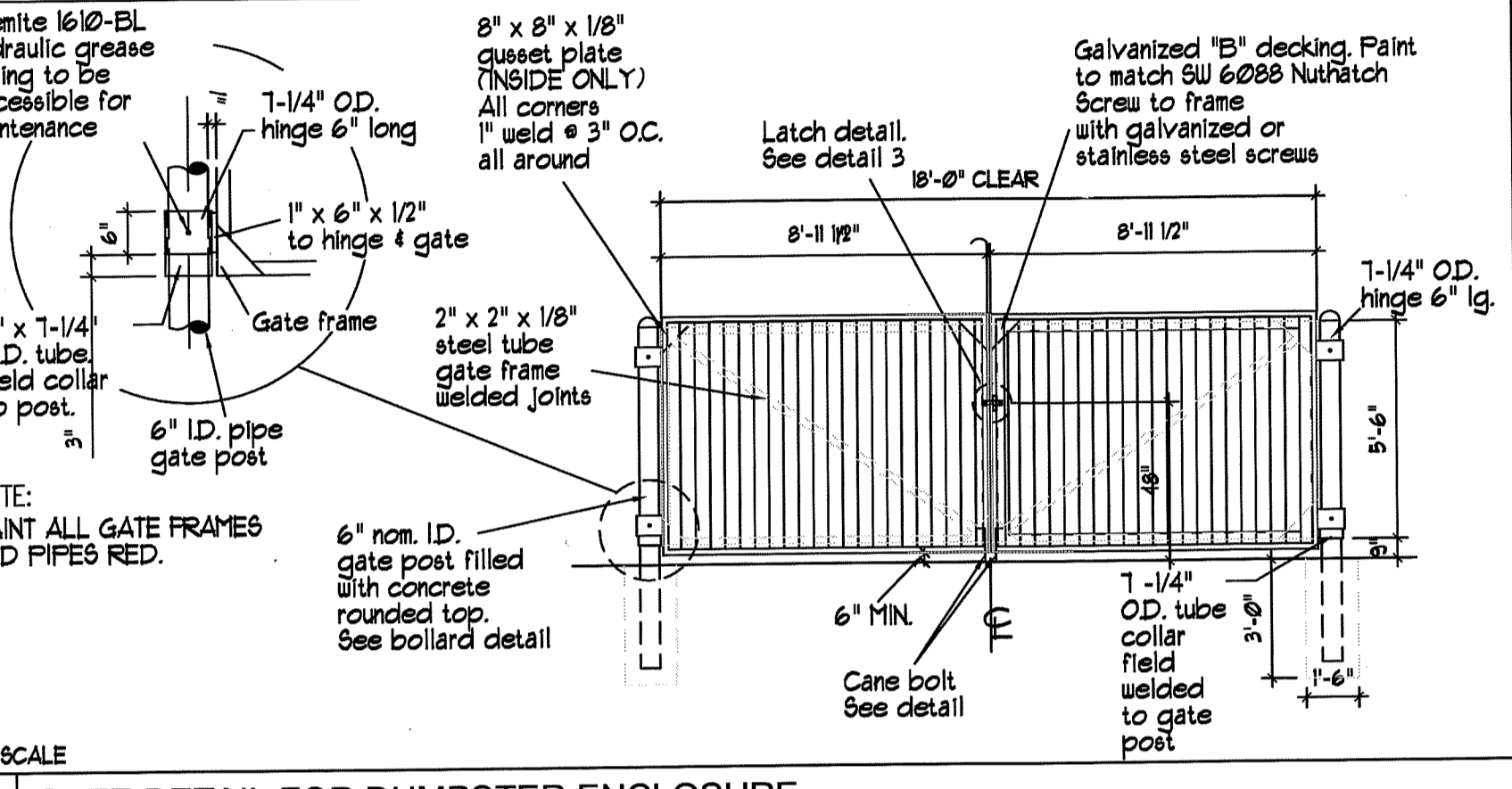
20 R100B (CA) WARNING SIGN



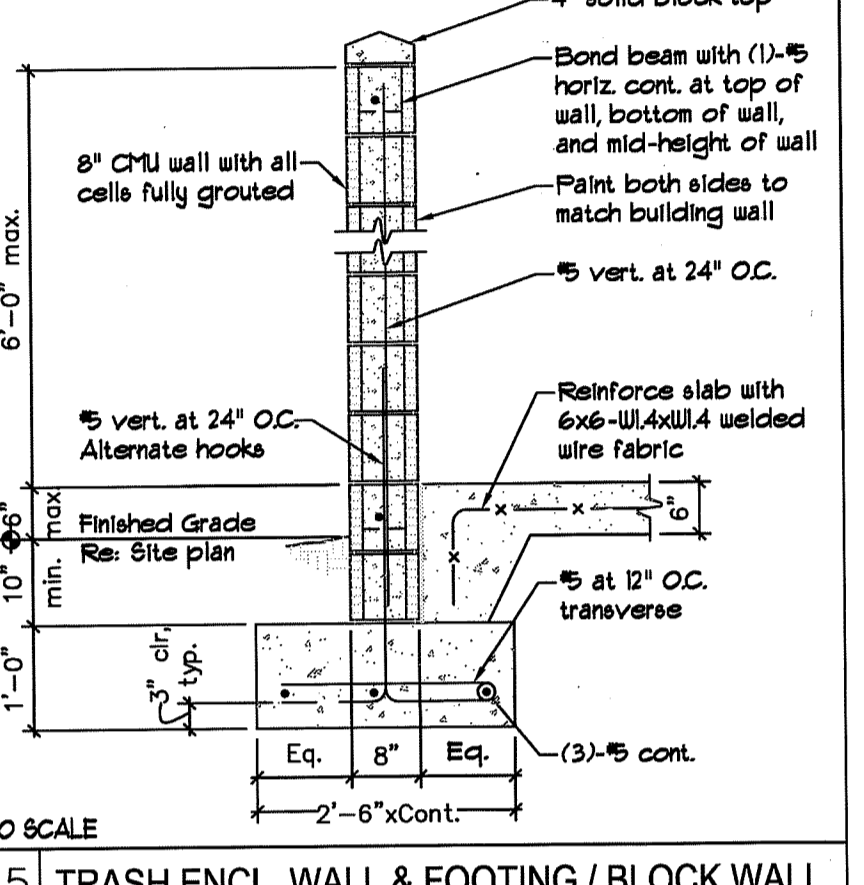
9 TYPICAL LIGHT POLE



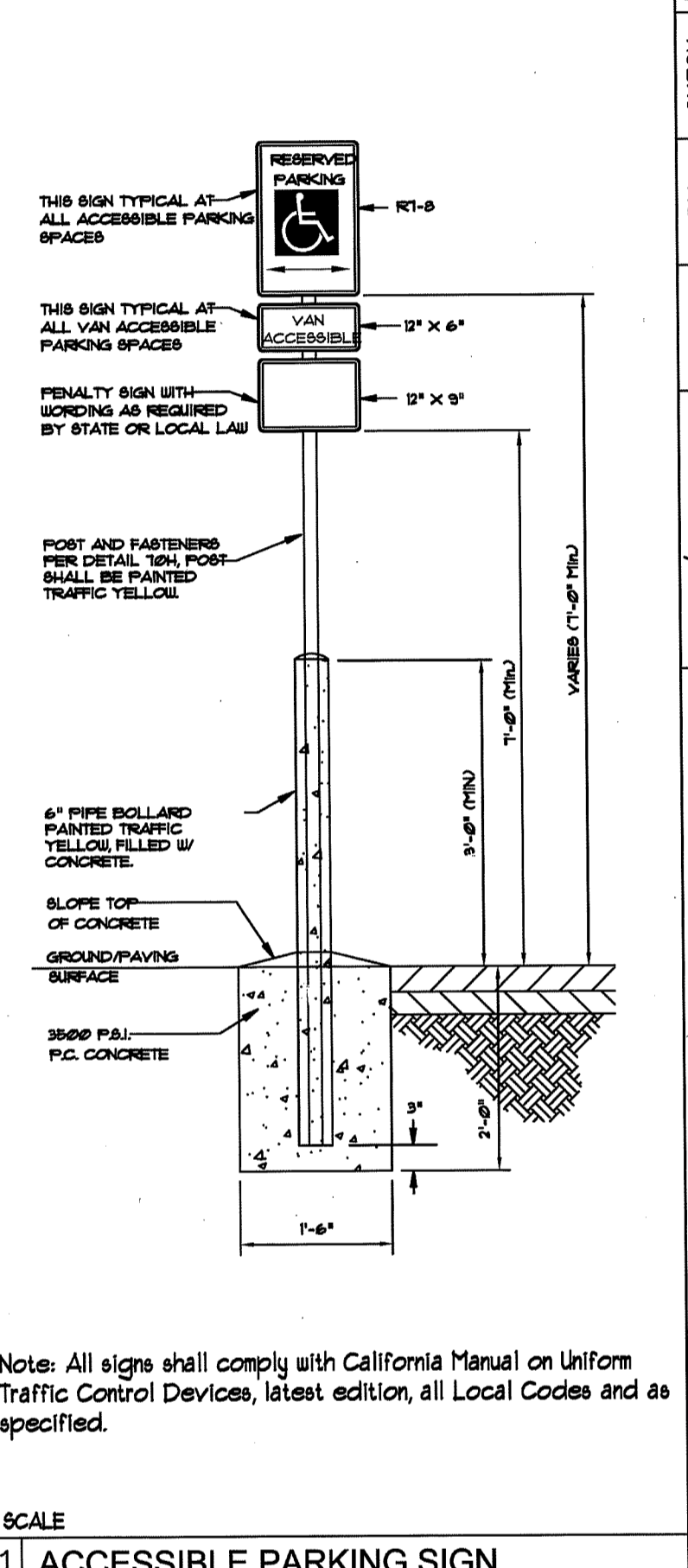
13 GATE LATCH / BOLT DETAILS



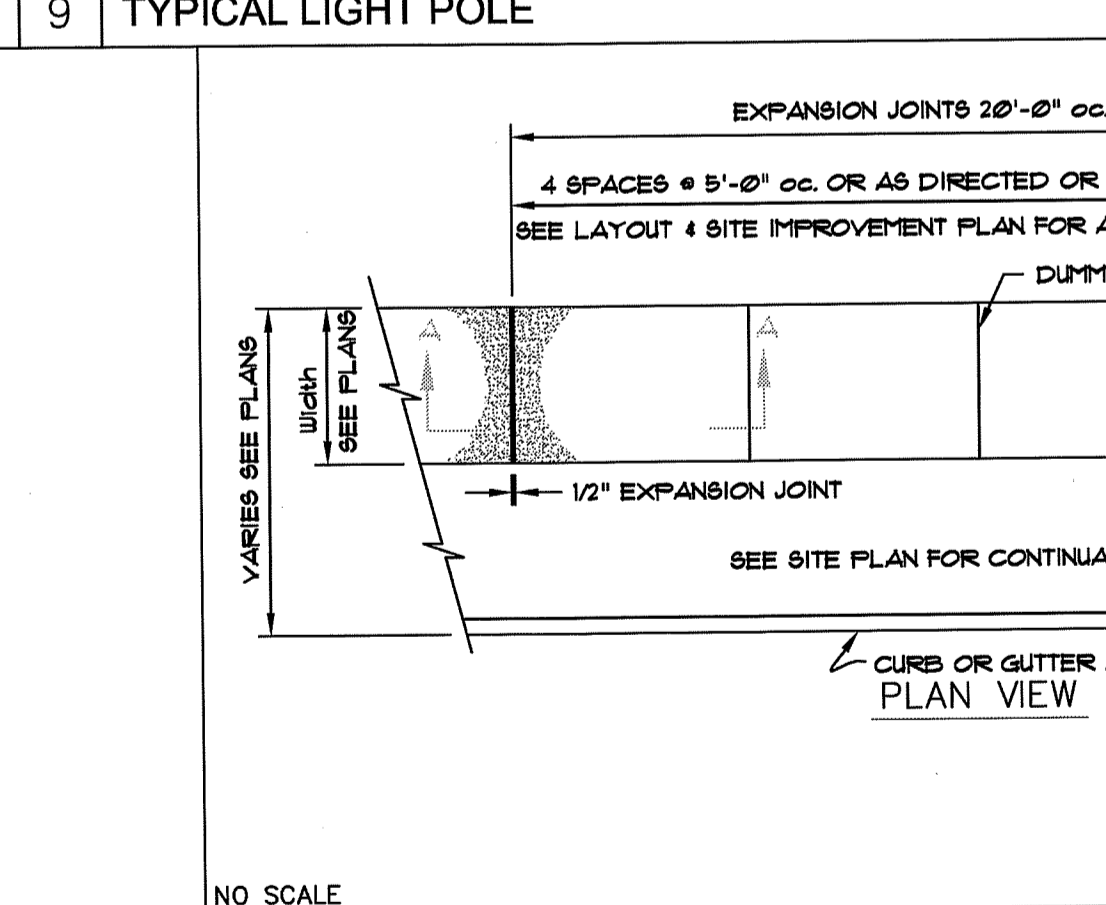
14 GATE DETAIL FOR DUMPSTER ENCLOSURE



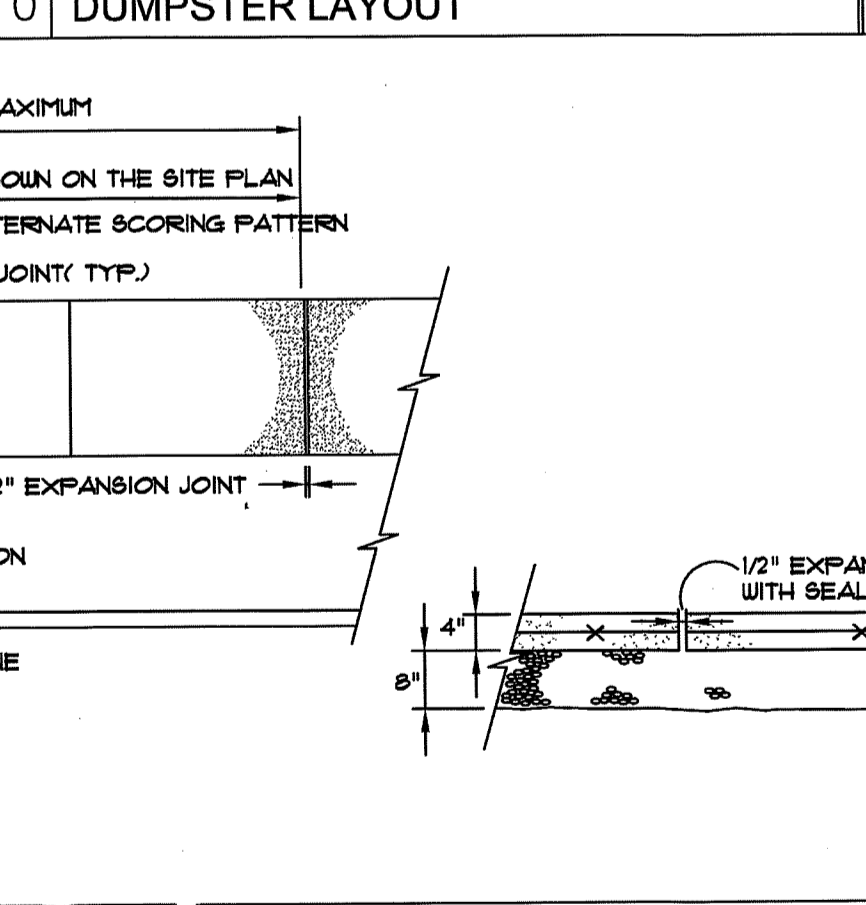
15 TRASH ENCL. WALL & FOOTING / BLOCK WALL



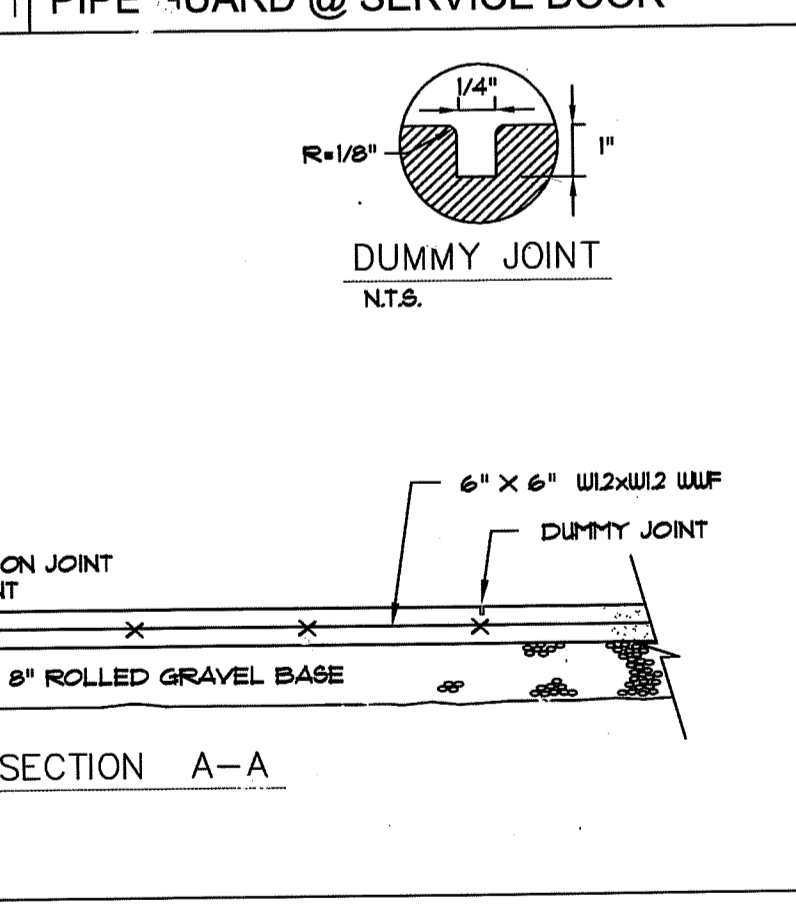
21 ACCESSIBLE PARKING SIGN



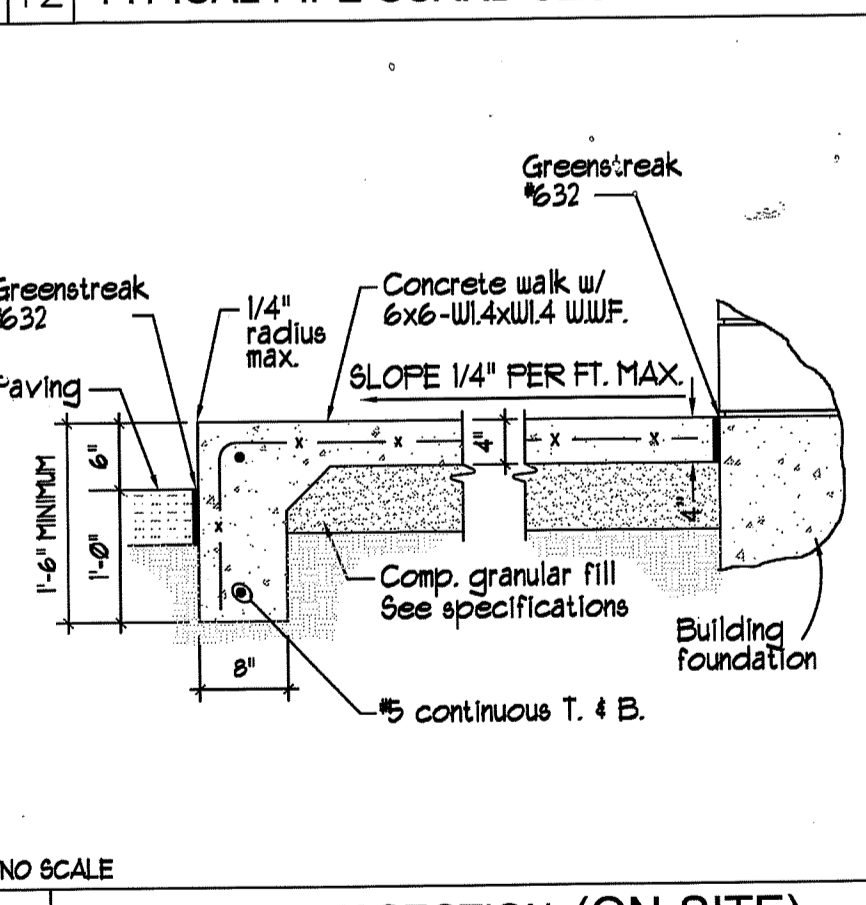
8 MODIFIED TYPE 5 CURB



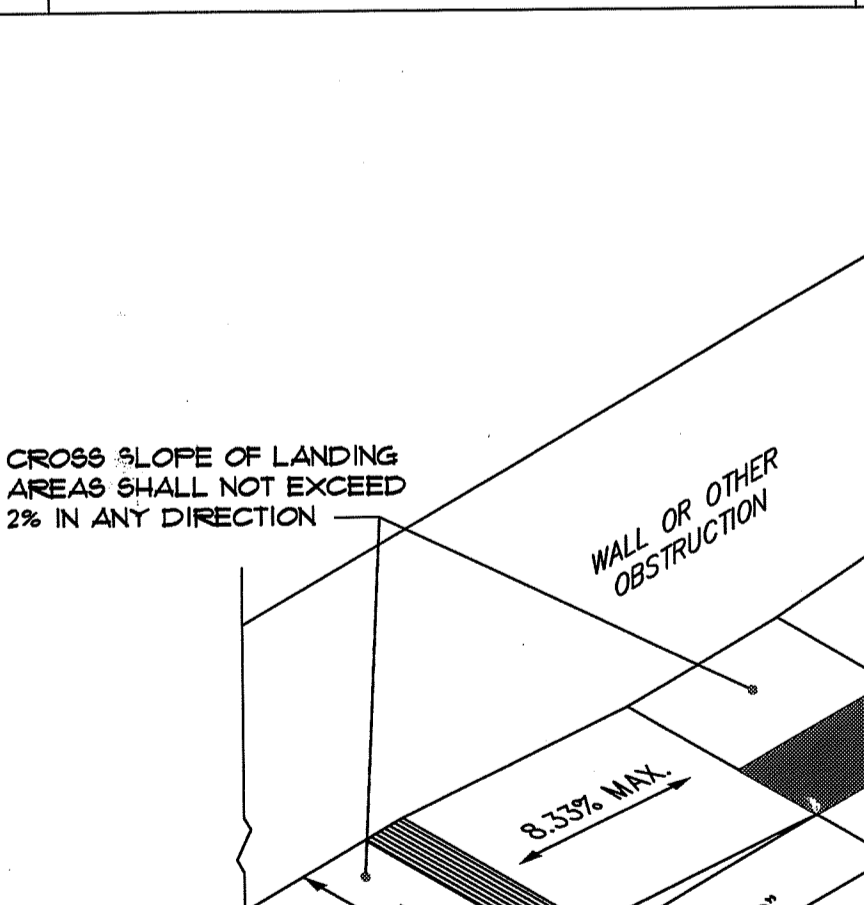
10 DUMPSTER LAYOUT



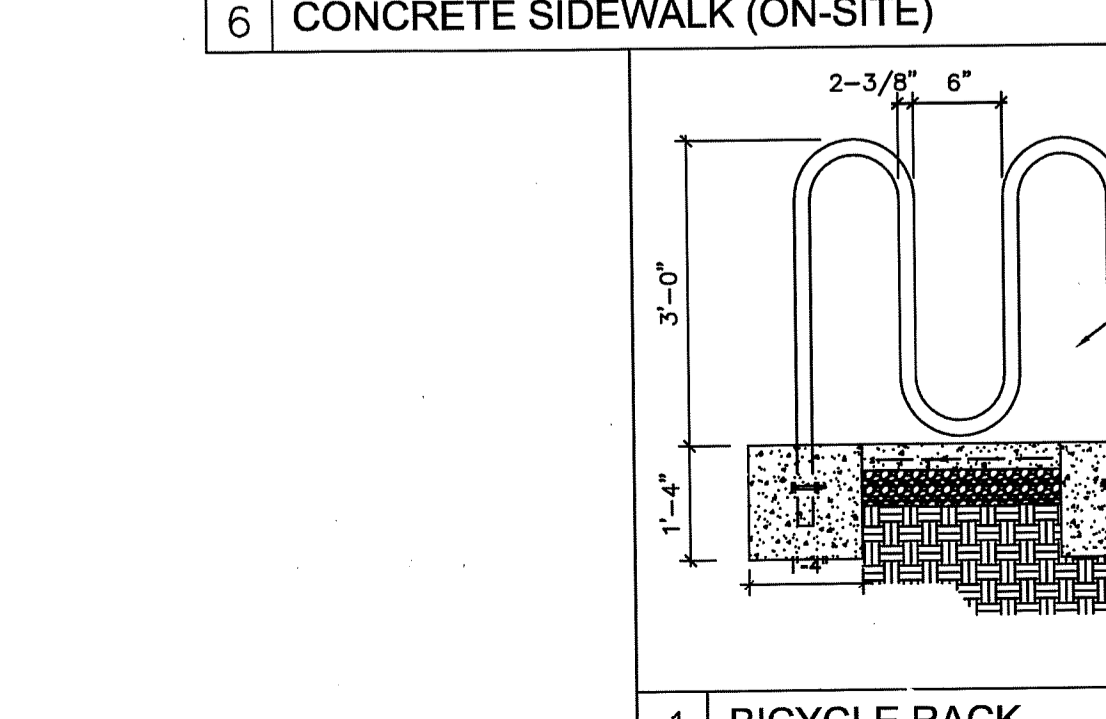
11 PIPE GUARD @ SERVICE DOOR



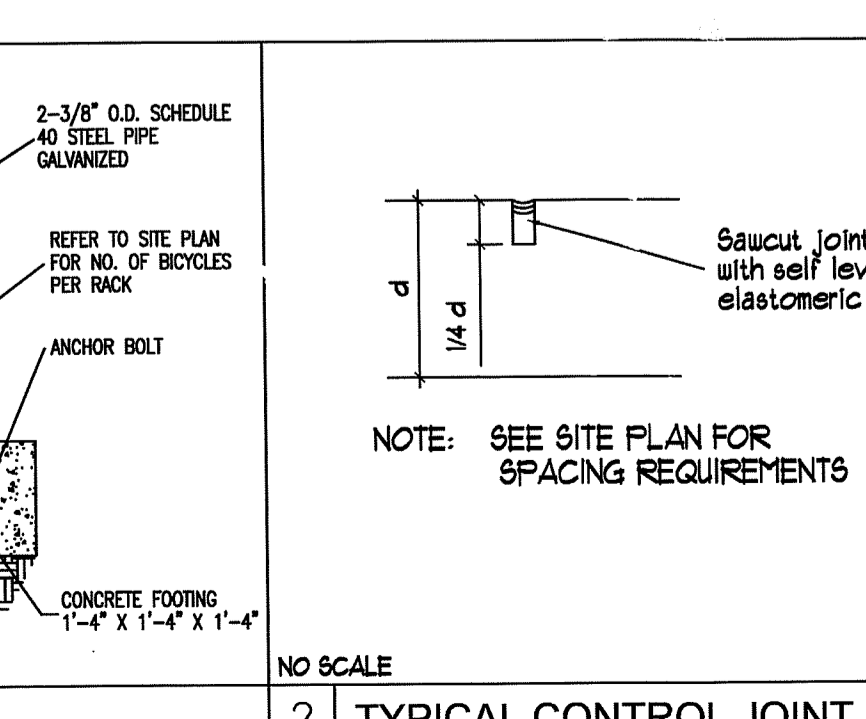
12 TYPICAL PIPE GUARD SECTION



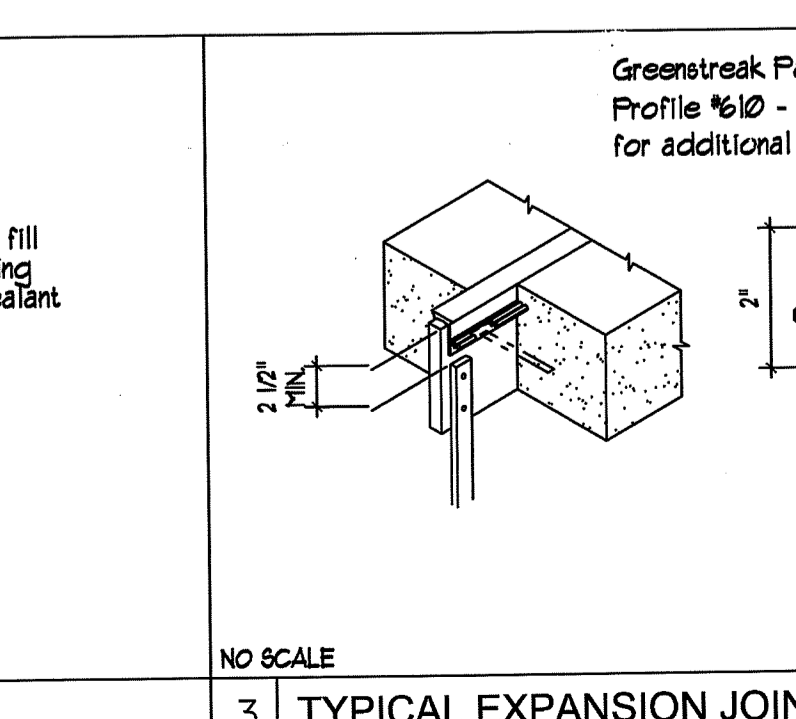
22 WHEEL STOP DETAIL



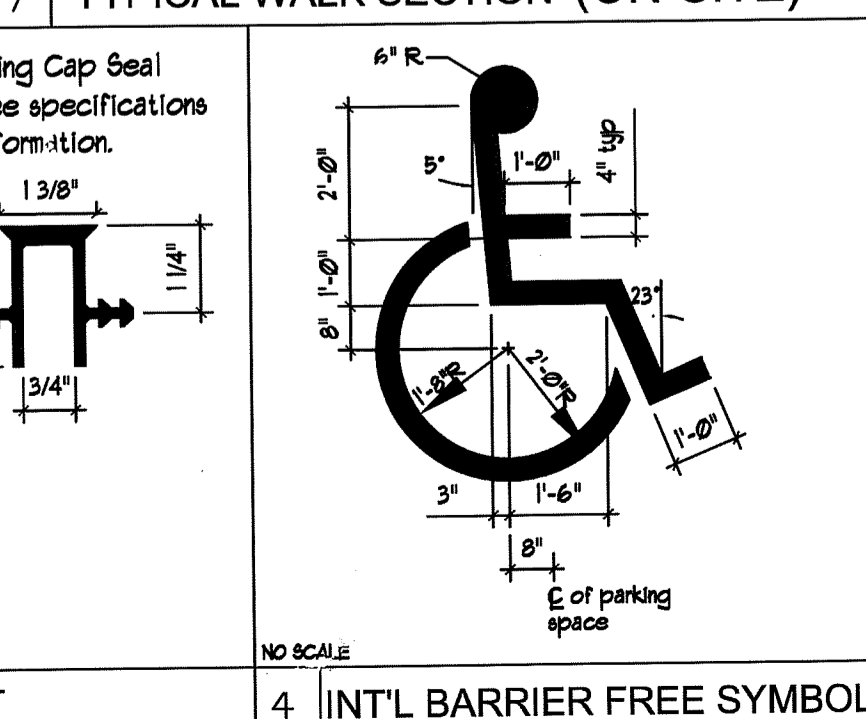
1 BICYCLE RACK



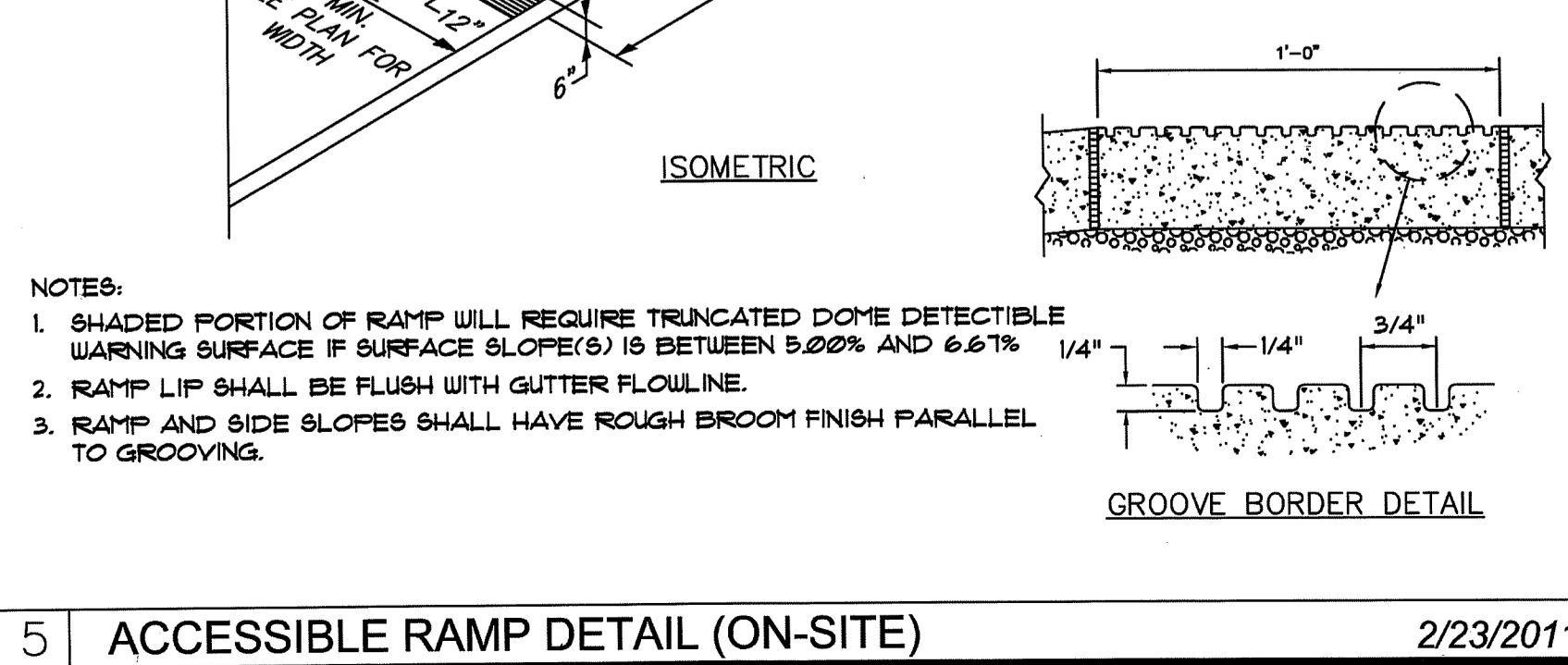
2 TYPICAL CONTROL JOINT



3 TYPICAL EXPANSION JOINT



4 INT'L BARRIER FREE SYMBOL



5 ACCESSIBLE RAMP DETAIL (ON-SITE)

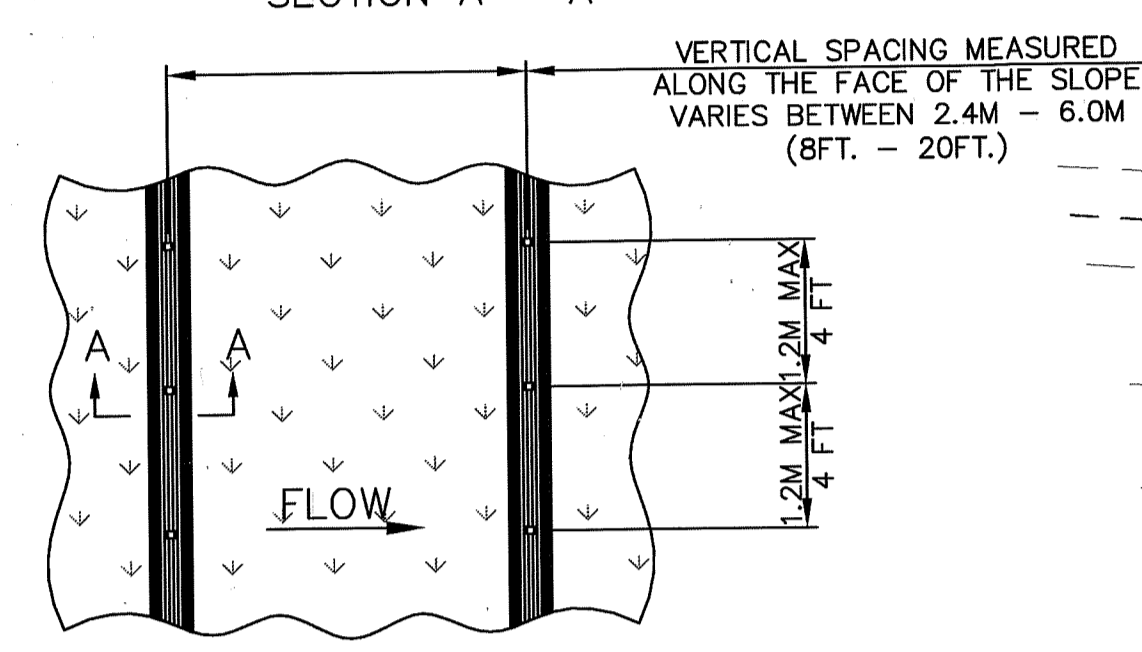
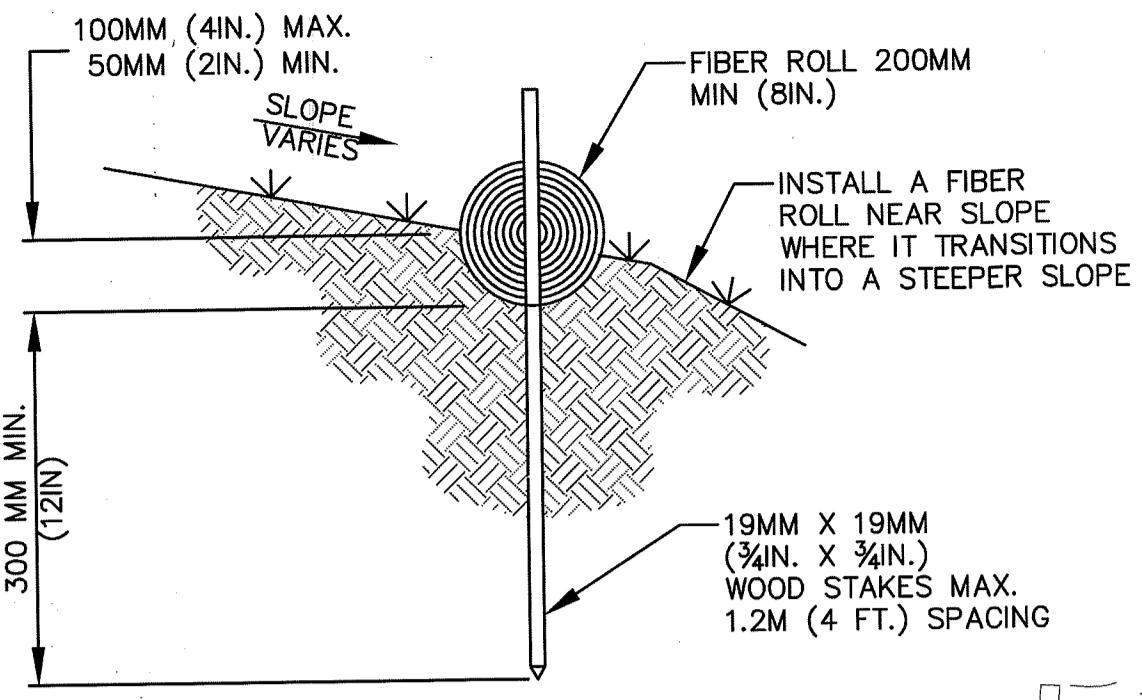
RFE Engineering, Inc.
 Civil Engineers • Planners • Surveyors
 8680 Greenback Lane, Suite 107, Orangevale, CA 95662
 Phone: 916-989-3285 Fax: 916-989-3597
 www.RFEEngineering.com

AUTOZONE, INC.
 123 S. FRONT STREET
 MEMPHIS, TN 38103
 CONTACT: MITCH BRAMLITT
 PH: (901) 495-8714

AUTOZONE STORE NO. 4036
 3828 MAIN STREET
 STOCKTON (SAN JOAQUIN COUNTY) CA 95215
CONSTRUCTION DETAILS

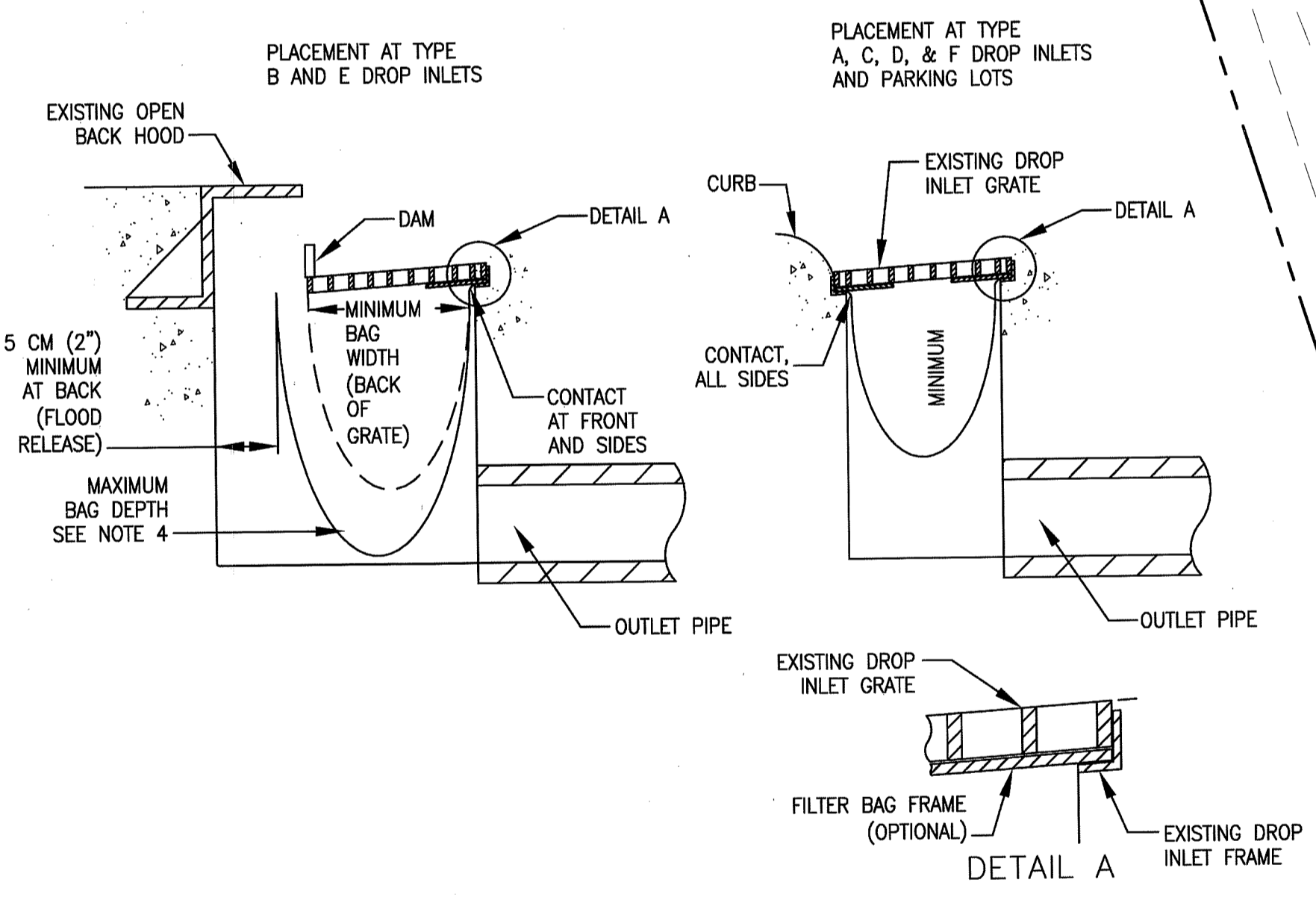
Drawing Sheet
 of Total
 C9 of 13

SU 4520
 Z:\2010 Projects\21003 Autozone Stockton\WORKING CAD\21003 CB CONSTRUCTION DETAILS.dwg Feb 28, 2011 - 01:47 pm



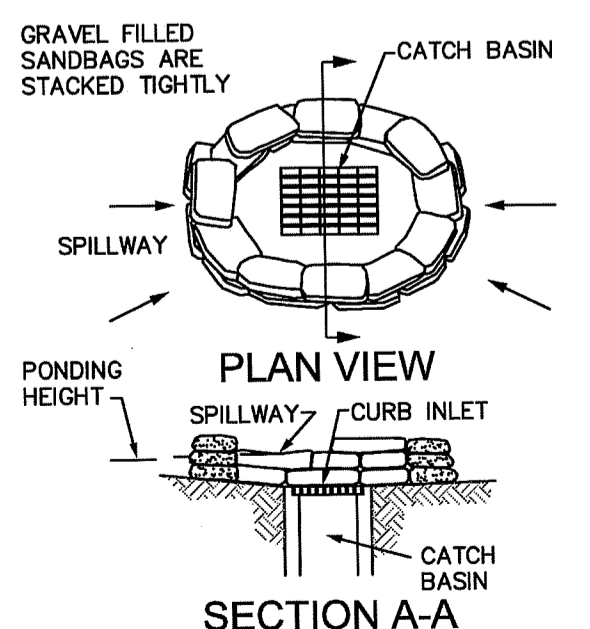
- NOTES:**
1. INSTALL FIBER ROLLS IN A ROW ALONG A LEVEL CONTOUR.
 2. AT ENDS OF A ROW TURN THE LAST TWO FEET UP SLOPE SLIGHTLY.
 3. FIBER ROLLS SHALL BE BUTTED TIGHTLY AT THE JOINTS.
 4. DO NOT OVERLAP JOINTS.

3 FIBER ROLL DETAIL
NOT TO SCALE

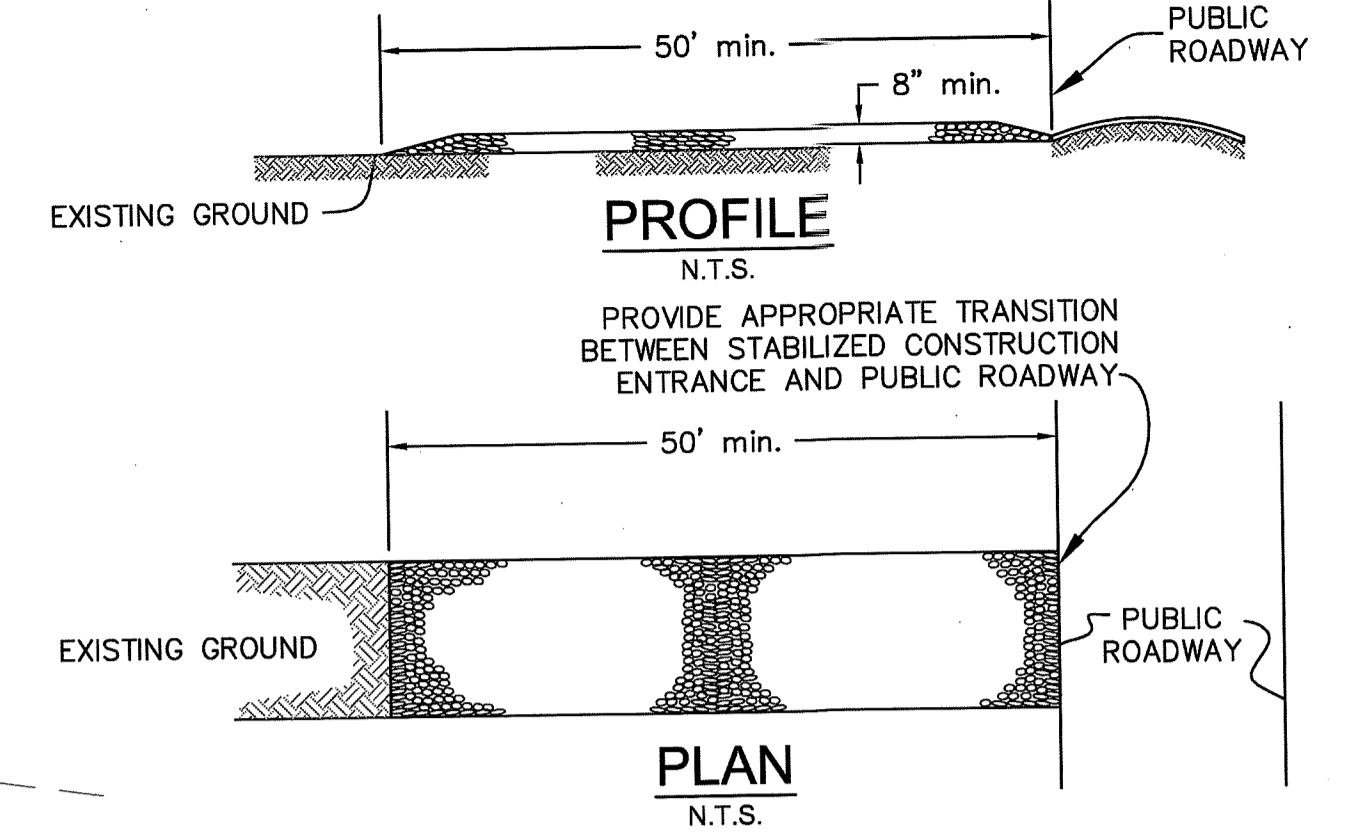


2 INLET FILTER BAG
NOT TO SCALE

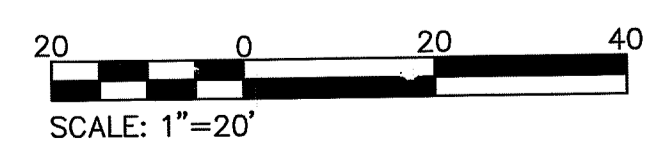
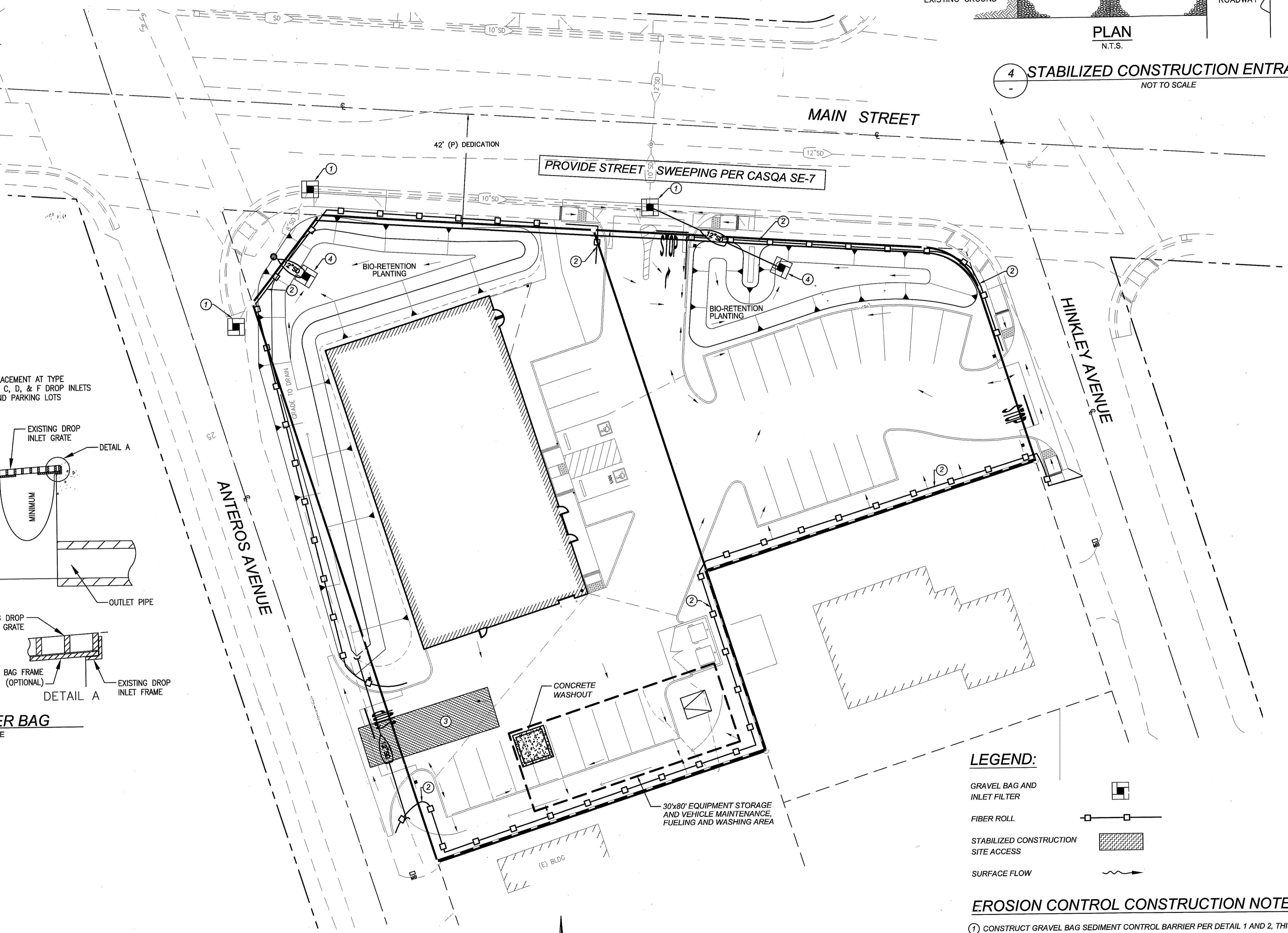
- NOTES:**
1. PLACE CURB TYPE SEDIMENT BARRIERS ON GENTLY SLOPING STREET SEGMENTS WHERE WATER CAN POND AND ALLOW SEDIMENT TO SEPARATE FROM RUNOFF.
 2. GRAVEL BAGS, OF EITHER BURLAP OR WOVEN GEOTEXTILE FABRIC, ARE FILLED WITH GRAVEL, LAYERED AND PACKED TIGHTLY.
 3. LEAVE ONE GRAVEL BAG GAP IN THE TOP ROW TO PROVIDE A SPILLWAY FOR OVERFLOW.
 4. INSPECT BARRIERS AND REMOVE SEDIMENT AFTER EACH STORM EVENT. SEDIMENT AND GRAVEL MUST BE REMOVED FROM THE TRAVELED WAY IMMEDIATELY.



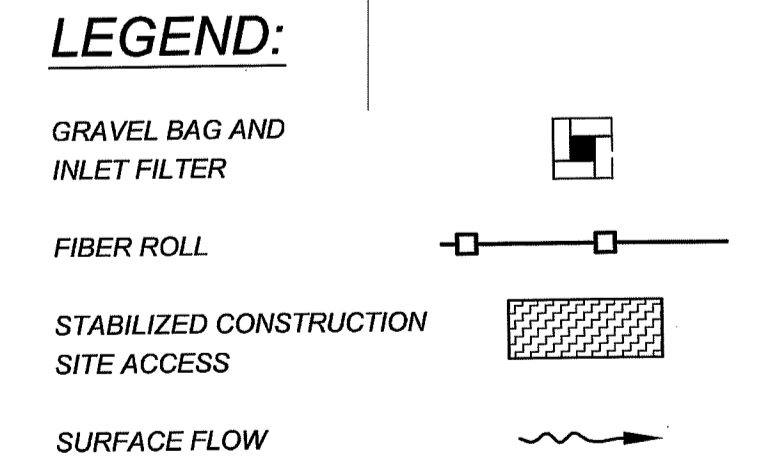
1 GRAVEL BAG INLET DETAIL
NOT TO SCALE



4 STABILIZED CONSTRUCTION ENTRANCE
NOT TO SCALE



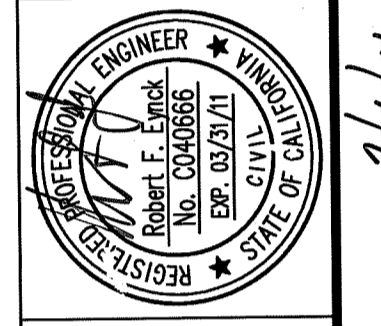
NOTE:
IMPLEMENTATION OF THE RECOMMENDED EROSION CONTROL MEASURES AS SHOWN ON THESE PLANS DOES NOT ENSURE COMPLIANCE WITH FEDERAL, STATE AND LOCAL LAWS, REGULATIONS AND ORDINANCES. THE BURDEN OF COMPLIANCE RESTS SOLELY WITH THE OWNER AND DEVELOPER OF THE PROJECT.



EROSION CONTROL CONSTRUCTION NOTES:

1. CONSTRUCT GRAVEL BAG SEDIMENT CONTROL BARRIER PER DETAIL 1 AND 2, THIS SHEET.
2. INSTALL FIBER ROLL PER DETAIL 3, THIS SHEET.
3. CONSTRUCT STABILIZED CONSTRUCTION SITE ACCESS PER DETAIL 4, THIS SHEET.
4. CONTRACTOR SHALL CONSTRUCT DETENTION BASINS AND STORM DRAIN OUTLETS AS PART OF THE ROUGH GRADING AND UTILIZE BASINS AS TEMPORARY SEDIMENT BASINS DURING CONSTRUCTION. CONSTRUCTION AND MAINTENANCE OF THESE FACILITIES SHALL BE IN ACCORDANCE WITH THE PROJECT SWPPP AND APPLICABLE LOCAL AND STATE REQUIREMENTS.

BY	DATE	REVISION	CHECK	NO.
			RFE	1
			DCJ	2
			RFE	3
				4



RFE Engineering, Inc.
Civil Engineers • Planners • Surveyors
8680 Greenback Lane, Suite 107, Orangevale, CA 95662
Phone: 916-969-3285 Fax: 916-969-3997
www.RFEEngineering.com

AUTOZONE, INC.
123 S. FRONT STREET
MEMPHIS, TN 38103
CONTACT: MITCH BRODMILLIT
PH: (901) 495-6714

AUTOZONE STORE NO. 4036
3828 MAIN STREET
STOCKTON (SAN JOAQUIN COUNTY) CA 95215
EROSION AND SEDIMENT CONTROL PLAN

Drawing	Sheet
of	of
	C8
	13

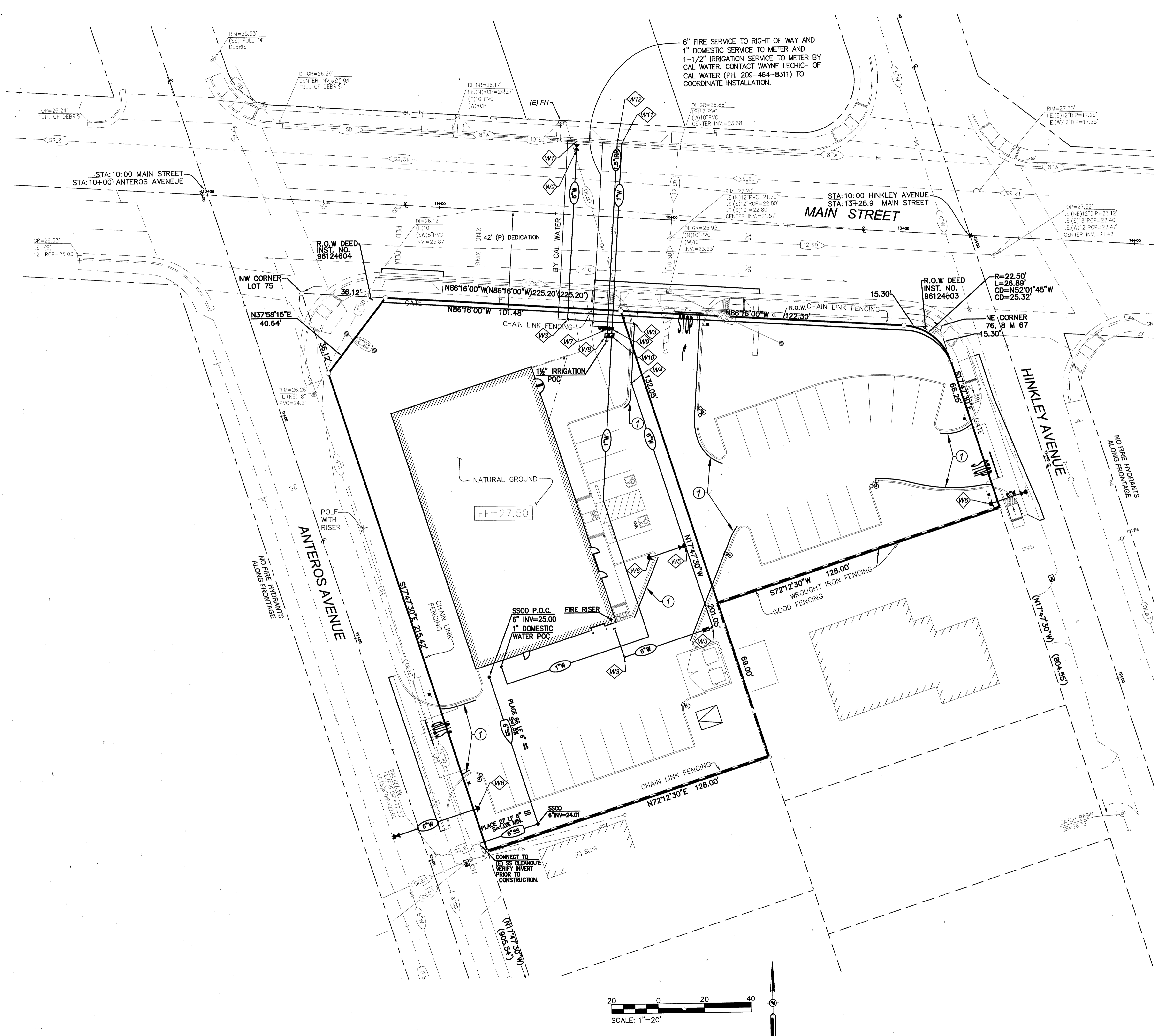
SU 4521

Z:\2010 Projects\21003 Autozone Stockton Working CAD\21003 CB EROSION AND SEDIMENT CONTROL PLAN.dwg Feb 28, 2011 - 01:46 pm

21003_AUTOZONE STORE NO. 4036 - 3828 MAIN STREET, STOCKTON, CA 95215

SU 4522

Z:\2010 Projects\21003 Autozone\WORKING CAD\21003 C7 WATER AND SS PLAN.dwg Feb 26, 2011-01:48 pm



WATER CONSTRUCTION NOTES:

- W1 CONNECT 6" WATER LINE TO EXISTING 8" WATER LINE WITH 8"x8"x6" TEE. EXTEND TO ROW (BY CAL WATER).
- W2 PLACE 6" GATE VALVE (BY CAL WATER).
- W3 PLACE 90° FITTING.
- W4 PLACE 22.5" FITTING.
- W5 PLACE 6"x6"x6" TEE FITTING.
- W6 PLACE FIRE HYDRANT ASSEMBLY PER CITY OF STOCKTON STD DWG 101.
- W7 PLACE 1 1/2" WATER METER PER CALIFORNIA WATER SERVICES STD CW-436R8 (BY CAL WATER).
- W8 PLACE 1 1/2" BACK FLOW PREVENTOR.
- W9 PLACE 1" WATER METER PER CALIFORNIA WATER SERVICES STD CW-555R14 (BY CAL WATER).
- W10 PLACE 1" BACK FLOW PREVENTOR.
- W11 PLACE 1" SERVICE CONNECTION PER CALIFORNIA WATER SERVICES STD CW-555R14 (BY CAL WATER).
- W12 PLACE 1 1/2" SERVICE CONNECTION PER CALIFORNIA WATER SERVICES STD CW-436R8 (BY CAL WATER).

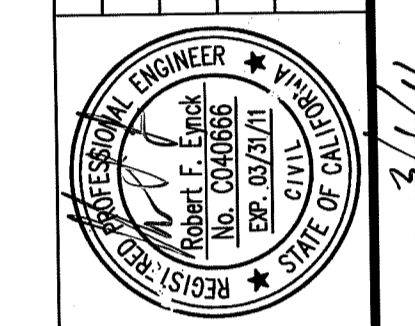
FIRE STRIPING NOTES:

- 1 PAINT FIRE LANE CURB PAINTING - PAINT CURB RED WITH 3" HIGH WHITE LETTERING 1/2" WIDE LETTERING LINEWORK "FIRE LANE NO PARKING" EVERY 25-FEET - MINIMUM ONE PER CURB SECTION - APPLY 2 COATS, RED AND WHITE.

GENERAL WATER NOTE:

- 1 SEE UNDERGROUND FIRE LINE PIPING PLANS, SHEET SP1, FOR ADDITIONAL INFORMATION REGARDING FIRE LINE.

BY	CHECK	NO.	REVISION	DATE

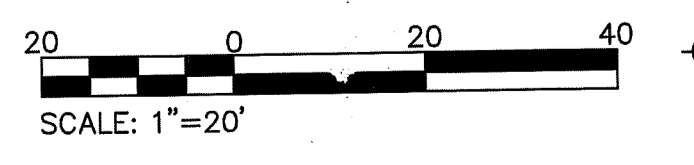


RFE Engineering, Inc.
 Civil Engineers • Planners • Surveyors
 8880 Greenback Lane, Suite 107, Orangevale, CA 95662
 Phone: 916-989-3285 Fax: 916-989-3587
 www.RFEEngineering.com

AUTOZONE, INC.
 123 S. FRONT STREET
 MEMPHIS, TN 38103
 CONTACT: MITCH BRAMLITT
 PH: (901) 495-8714

AUTOZONE STORE NO. 4036
 3828 MAIN STREET
 STOCKTON (SAN JOAQUIN COUNTY) CA 95215
WATER AND SANITARY SEWER PLAN

Drawing of	Sheet
	C7 of Total
	13



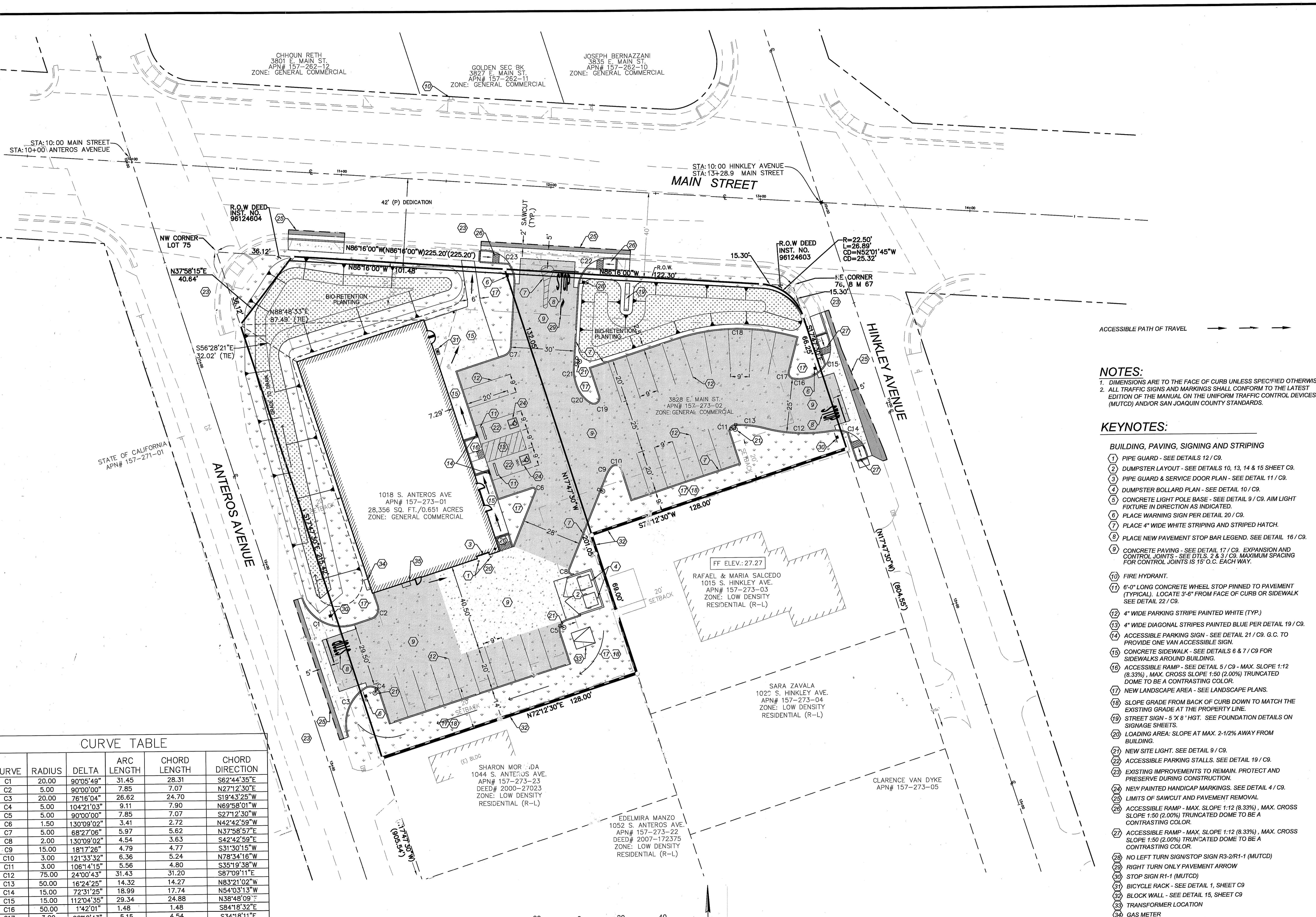
2/23/2011

21003

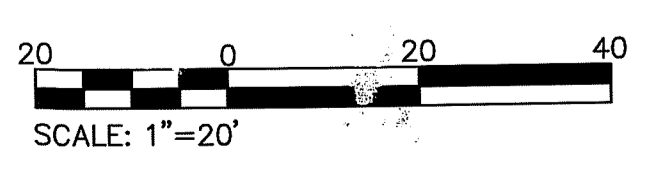
21003 AUTOZONE STORE NO. 4036 - 3828 MAIN STREET, STOCKTON, CA 95215

SU 4524

Z:\2010 Projects\21003 Autozone Stockton\WORKING CAD\21003 CS SITE PLAN.dwg Feb 28, 2011 09:41 pm



CURVE TABLE					
CURVE	RADIUS	DELTA	ARC LENGTH	CHORD LENGTH	CHORD DIRECTION
C1	20.00	90°05'49"	31.45	28.31	S62°44'35"E
C2	5.00	90°00'00"	7.85	7.07	N27°12'30"E
C3	20.00	76°16'04"	26.62	24.70	S19°43'25"W
C4	5.00	104°21'03"	9.11	7.90	N69°58'01"W
C5	5.00	90°00'00"	7.85	7.07	S27°12'30"W
C6	1.50	130°09'02"	3.41	2.72	N42°42'59"W
C7	5.00	68°27'06"	5.97	5.62	N37°58'57"E
C8	2.00	130°09'02"	4.54	3.63	S42°42'59"E
C9	15.00	18°17'26"	4.79	4.77	S31°30'15"W
C10	3.00	121°33'32"	6.36	5.24	N78°34'16"W
C11	3.00	106°14'15"	5.56	4.80	S35°19'38"W
C12	75.00	24°00'43"	31.43	31.20	S87°09'11"E
C13	50.00	16°24'25"	14.32	14.27	N83°21'02"W
C14	15.00	72°31'25"	18.99	17.74	N54°03'13"W
C15	15.00	112°04'35"	29.34	24.88	N38°48'09"E
C16	50.00	1°42'01"	1.48	1.48	S84°18'32"E
C17	3.00	98°18'43"	5.15	4.54	S34°18'11"E
C18	95.00	32°38'41"	54.13	53.40	S88°31'50"W
C19	3.00	137°35'28"	7.20	5.59	N51°00'14"E
C20	15.00	54°18'53"	14.22	13.69	S44°56'58"E
C21	20.00	21°32'54"	7.52	7.48	S07°01'03"E
C22	15.00	90°02'56"	23.57	21.22	S48°46'52"W
C23	15.00	89°57'04"	23.55	21.20	S41°13'09"E



NOTES:
 1. DIMENSIONS ARE TO THE FACE OF CURB UNLESS SPECIFIED OTHERWISE.
 2. ALL TRAFFIC SIGNS AND MARKINGS SHALL CONFORM TO THE LATEST EDITION OF THE MANUAL ON THE UNIFORM TRAFFIC CONTROL DEVICES (MUTCD) AND/OR SAN JOAQUIN COUNTY STANDARDS.

- KEYNOTES:**
- 1 BUILDING, PAVING, SIGNING AND STRIPING
 - 2 PIPE GUARD - SEE DETAILS 12 / C9.
 - 3 DUMPSTER LAYOUT - SEE DETAILS 10, 13, 14 & 15 SHEET C9.
 - 4 PIPE GUARD & SERVICE DOOR PLAN - SEE DETAIL 11 / C9.
 - 5 DUMPSTER BOLLARD PLAN - SEE DETAIL 10 / C9.
 - 6 CONCRETE LIGHT POLE BASE - SEE DETAIL 9 / C9. AIM LIGHT FIXTURE IN DIRECTION AS INDICATED.
 - 7 PLACE WARNING SIGN PER DETAIL 20 / C9.
 - 8 PLACE 4" WIDE WHITE STRIPING AND STRIPED HATCH.
 - 9 PLACE NEW PAVEMENT STOP BAR LEGEND. SEE DETAIL 16 / C9.
 - 10 CONCRETE PAVING - SEE DETAIL 17 / C9. EXPANSION AND CONTROL JOINTS - SEE DTLS. 2 & 3 / C9. MAXIMUM SPACING FOR CONTROL JOINTS IS 15' O.C. EACH WAY.
 - 11 FIRE HYDRANT.
 - 12 6'-0" LONG CONCRETE WHEEL STOP PINNED TO PAVEMENT (TYPICAL). LOCATE 3'-6" FROM FACE OF CURB OR SIDEWALK SEE DETAIL 22 / C9.
 - 13 4" WIDE PARKING STRIPE PAINTED WHITE (TYP.)
 - 14 4" WIDE DIAGONAL STRIPES PAINTED BLUE PER DETAIL 19 / C9.
 - 15 ACCESSIBLE PARKING SIGN - SEE DETAIL 21 / C9. G.C. TO PROVIDE ONE VAN ACCESSIBLE SIGN.
 - 16 CONCRETE SIDEWALK - SEE DETAILS 6 & 7 / C9 FOR SIDEWALKS AROUND BUILDING.
 - 17 ACCESSIBLE RAMP - SEE DETAIL 5 / C9 - MAX. SLOPE 1:12 (8.33%), MAX. CROSS SLOPE 1:50 (2.00%) TRUNCATED DOME TO BE A CONTRASTING COLOR.
 - 18 NEW LANDSCAPE AREA - SEE LANDSCAPE PLANS.
 - 19 SLOPE GRADE FROM BACK OF CURB DOWN TO MATCH THE EXISTING GRADE AT THE PROPERTY LINE.
 - 20 STREET SIGN - 5' X 8' HGT. SEE FOUNDATION DETAILS ON SIGNAGE SHEETS.
 - 21 LOADING AREA: SLOPE AT MAX. 2-1/2% AWAY FROM BUILDING.
 - 22 NEW SITE LIGHT. SEE DETAIL 9 / C9.
 - 23 ACCESSIBLE PARKING STALLS. SEE DETAIL 19 / C9.
 - 24 EXISTING IMPROVEMENTS TO REMAIN. PROTECT AND PRESERVE DURING CONSTRUCTION.
 - 25 NEW PAINTED HANDICAP MARKINGS. SEE DETAIL 4 / C9.
 - 26 LIMITS OF SAWCUT AND PAVEMENT REMOVAL
 - 27 ACCESSIBLE RAMP - MAX. SLOPE 1:12 (8.33%), MAX. CROSS SLOPE 1:50 (2.00%) TRUNCATED DOME TO BE A CONTRASTING COLOR.
 - 28 ACCESSIBLE RAMP - MAX. SLOPE 1:12 (8.33%), MAX. CROSS SLOPE 1:50 (2.00%) TRUNCATED DOME TO BE A CONTRASTING COLOR.
 - 29 NO LEFT TURN SIGN/STOP SIGN R3-2/R1-1 (MUTCD)
 - 30 RIGHT TURN ONLY PAVEMENT ARROW
 - 31 STOP SIGN R1-1 (MUTCD)
 - 32 BICYCLE RACK - SEE DETAIL 1, SHEET C9
 - 33 BLOCK WALL - SEE DETAIL 15, SHEET C9
 - 34 TRANSFORMER LOCATION
 - 35 GAS METER
 - 36 ELECTRIC METER

	BY	DATE	REVISION	NO.	BY	DATE
	DESIGN	DRAWN	QUANT.			

ORIGINAL SCALE IS IN INCHES

RFE Engineering, Inc.
 Civil Engineers • Planners • Surveyors
 8680 Greenback Lane, Suite 107, Orangevale, CA 95662
 Phone: 916-965-3260 Fax: 916-965-3397
 www.rfeengineering.com

AUTOZONE, INC.
 123 S. FRONT STREET
 MEMPHIS, TN 38103
 CONTACT: MITCH BRAMLITT
 PH: (901) 495-8714

AUTOZONE STORE NO. 4036
 3828 MAIN STREET
 STOCKTON (SAN JOAQUIN COUNTY) CA 95215

SITE PLAN

Drawing of Sheet C5 of Total 13

2/23/2011 21003

21003_AUTOZONE STORE NO. 4036 - 3828 MAIN STREET, STOCKTON, CA 95215

SU 4526

Z:\2010 Projects\21003_Autozone Stockton\WORKING CAD\21003_C3_EXISTING CONDITIONS PLAN.dwg Feb 28, 2011-03:34 PM

BASIS OF BEARINGS:

THE SOUTHERLY LINE OF MAIN STREET (COPPERPOLIS ROAD) AS SHOWN ON BURKETT ACRES, RECORDED IN BOOK 8 OF MAPS, PAGE 67, SAN JOAQUIN COUNTY RECORDS, TAKEN TO BEAR: SOUTH 86°16' EAST.

BASIS OF ELEVATIONS:

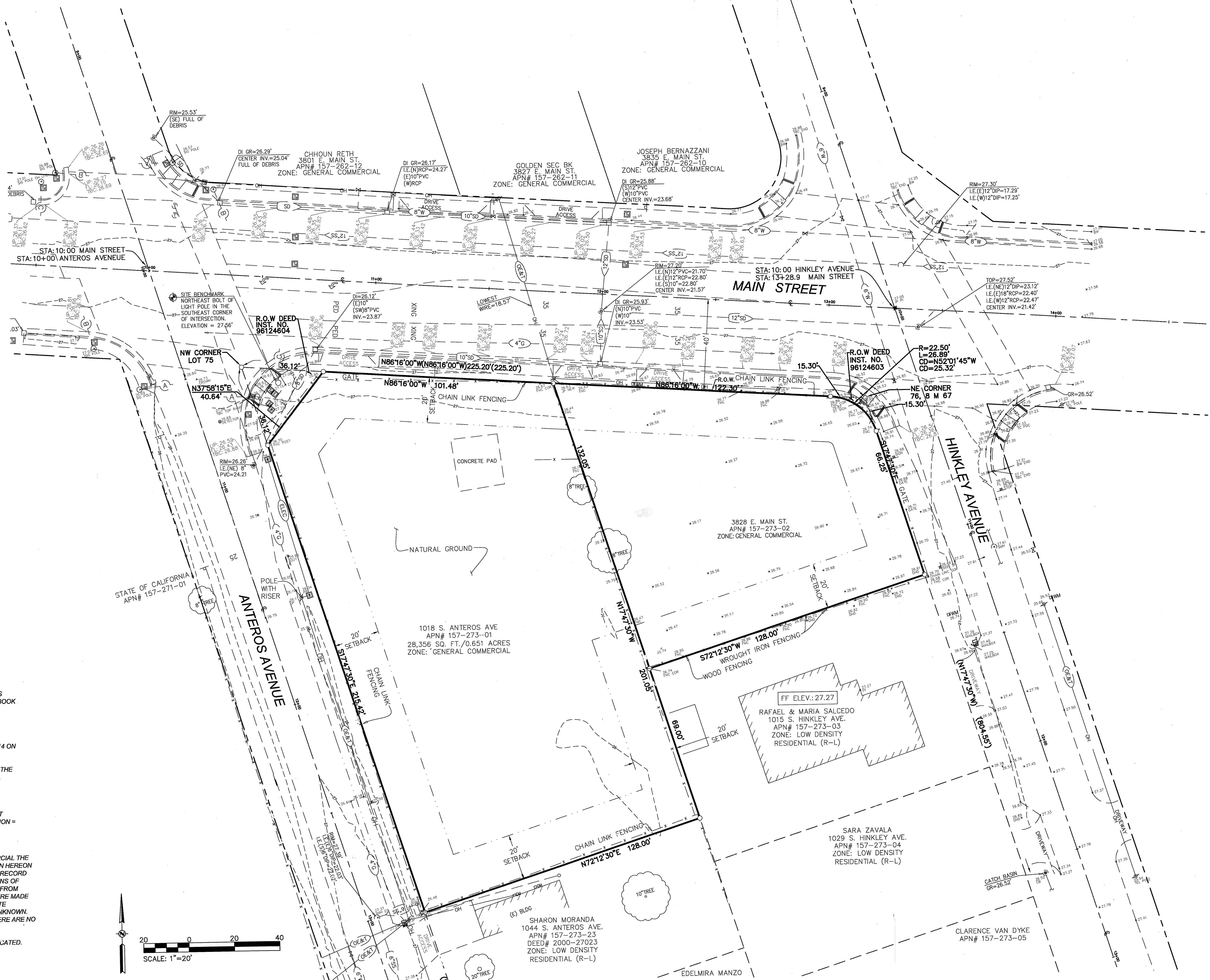
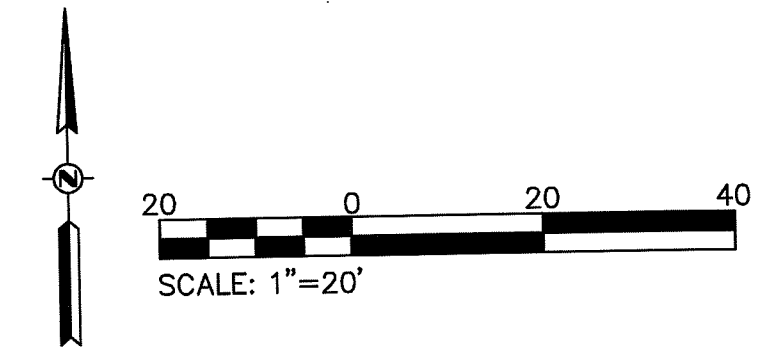
A BRASS DISK MARKING CALTRANS MONUMENT PM 18.14 ON THE SOUTH SIDE OF THE MAIN ST. BRIDGE OVER U.S. HIGHWAY 99. ELEVATION = 34.80. (CITY OF STOCKTON DATUM) BENCHMARK INFORMATION FOUND ONLINE AT THE CITY OF STOCKTON PUBLIC WORKS DEPARTMENT SITE.

SITE BENCHMARK:

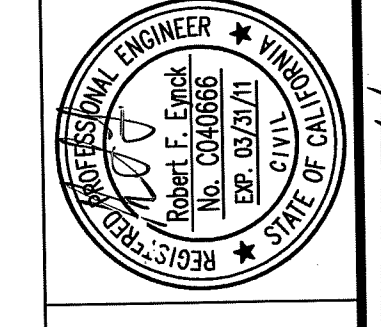
SITE BENCHMARK #1: THE NORTHEAST BOLT OF THE NORTHEAST TRAFFIC SIGNAL POLE AT THE SOUTHEAST CORNER OF S. ANTEROS AVE. AND E. MAIN ST. ELEVATION = 27.56 FEET. (CITY OF STOCKTON DATUM).

NOTE:

- THIS PROPERTY IS ZONED "CG" - GENERAL COMMERCIAL THE LOCATIONS OF UNDERGROUND UTILITIES AS SHOWN HEREON ARE BASED ON ABOVE GROUND STRUCTURES AND RECORD DRAWINGS PROVIDED TO THE SURVEYOR. LOCATIONS OF UNDERGROUND UTILITIES/STRUCTURES MAY VARY FROM LOCATIONS SHOWN HEREON. NO EXCAVATIONS WERE MADE DURING THE PROGRESS OF THIS SURVEY TO LOCATE UNDERGROUND UTILITIES/STRUCTURES, DEPTHS UNKNOWN. ALL UTILITIES FOUND ARE UNDERGROUND AND THERE ARE NO ABOVE GROUND UTILITIES ADJACENT TO THE SITE.
- NO TREES SMALLER THAN A 6" DIAMETER WERE LOCATED.



BY	DATE	REVISION	CHECK NO.



RFE Engineering, Inc.
 Civil Engineers • Planners • Surveyors
 6680 Greenback Lane, Suite 107, Orangevale, CA 95662
 Phone: 916-969-2265 Fax: 916-969-5397
 www.rfeengineering.com

AUTOZONE INC.
 123 S. FRONT STREET
 STOCKTON, CA 95215
 CONTACT: MITCH BRAMLITT
 PH: (801) 465-8714

AUTOZONE STORE NO. 4036
 3828 MAIN STREET
 STOCKTON (SAN JOAQUIN COUNTY) CA 95215

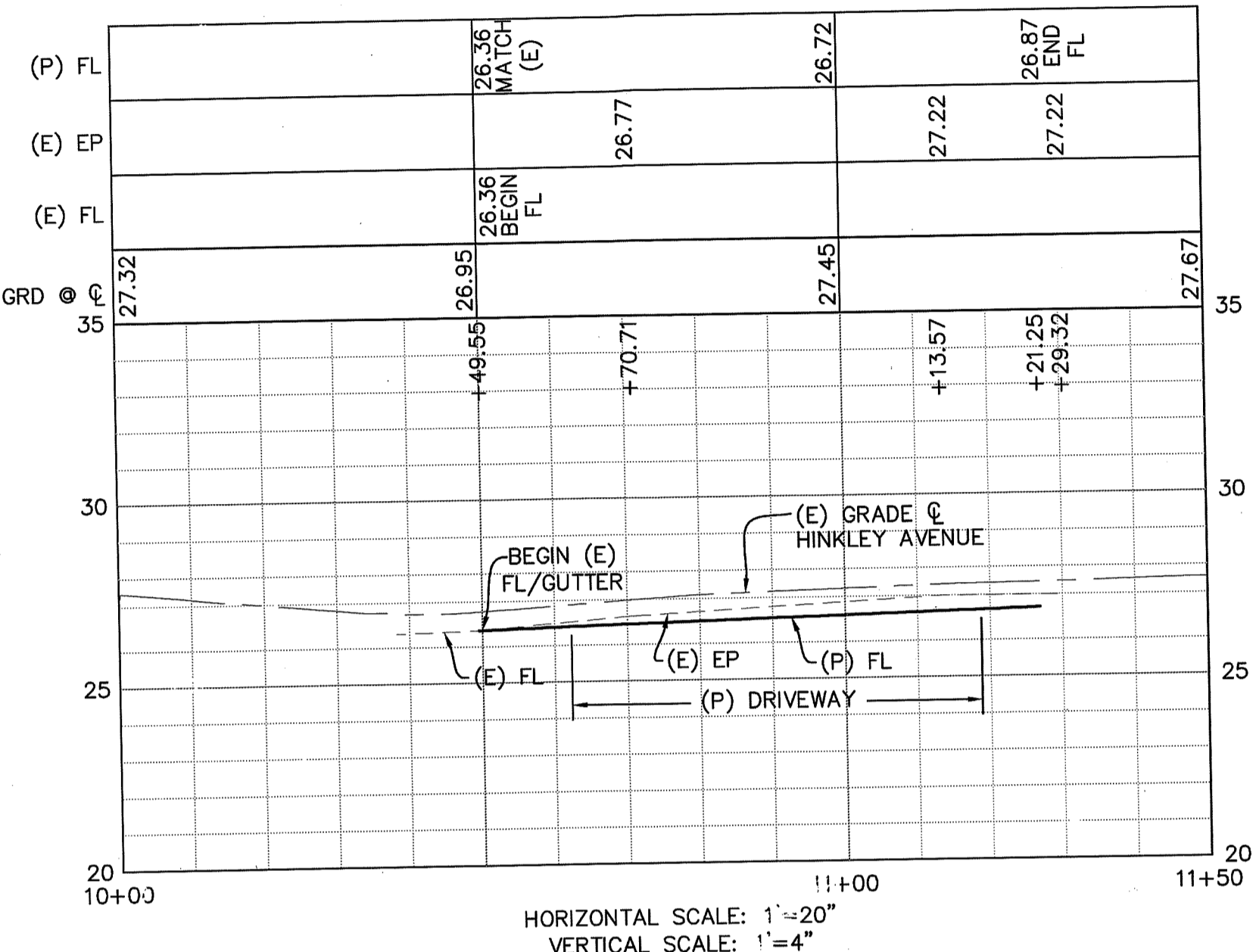
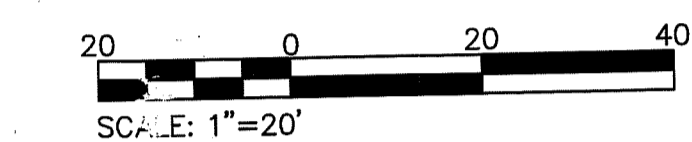
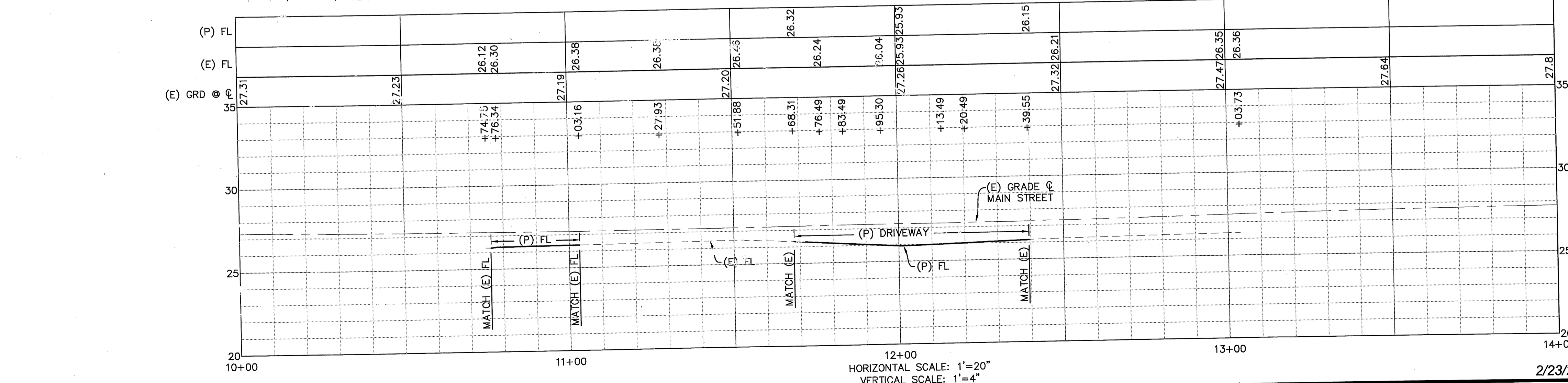
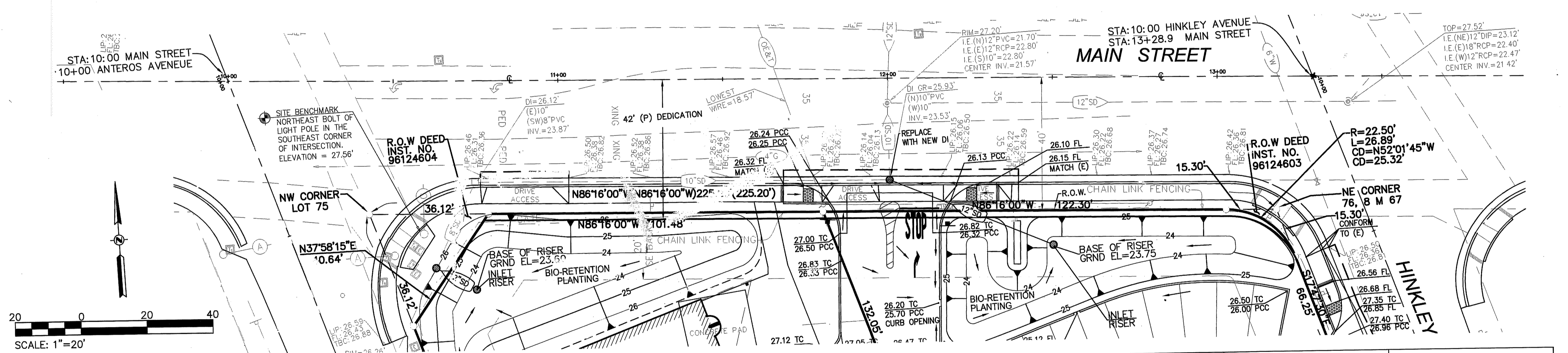
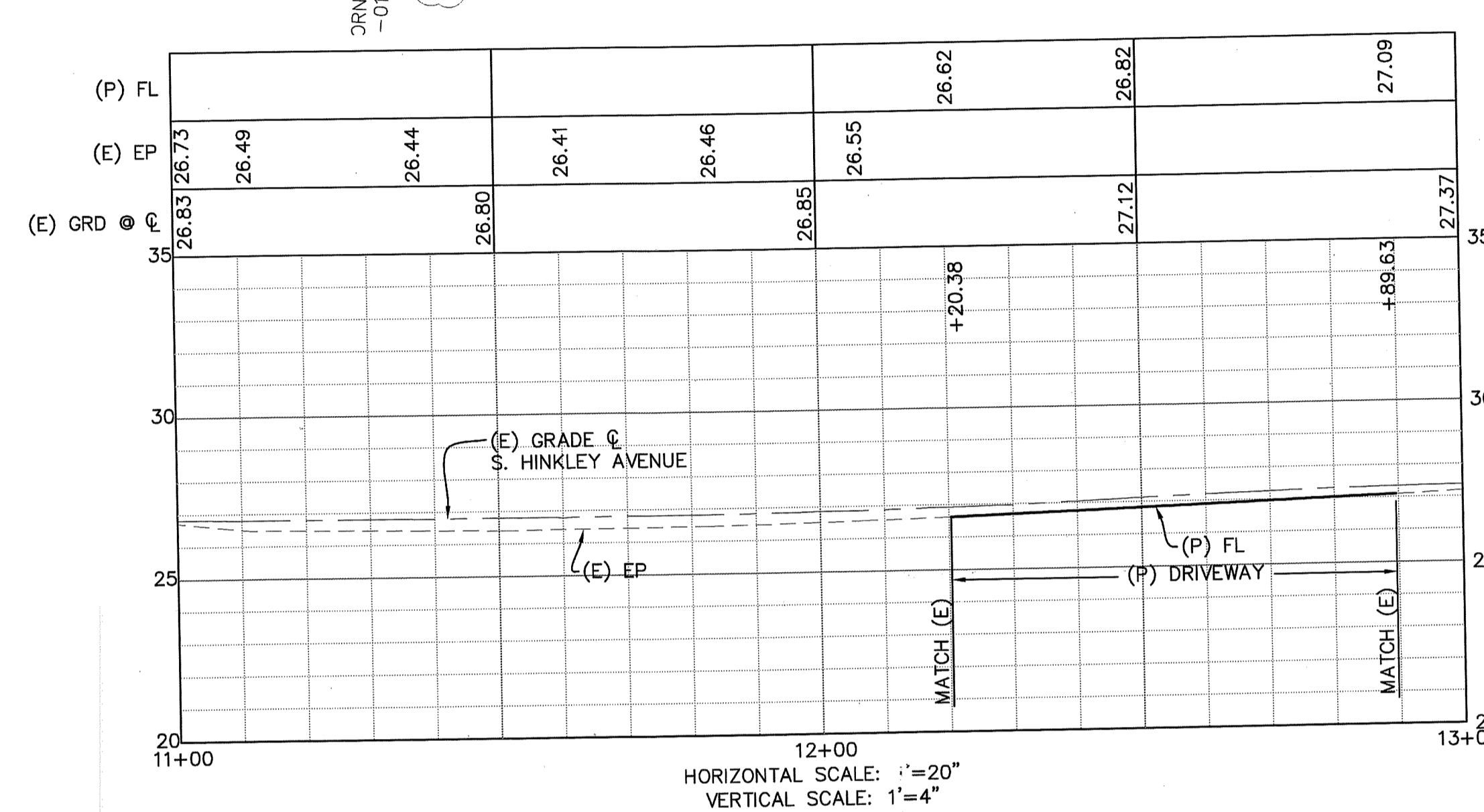
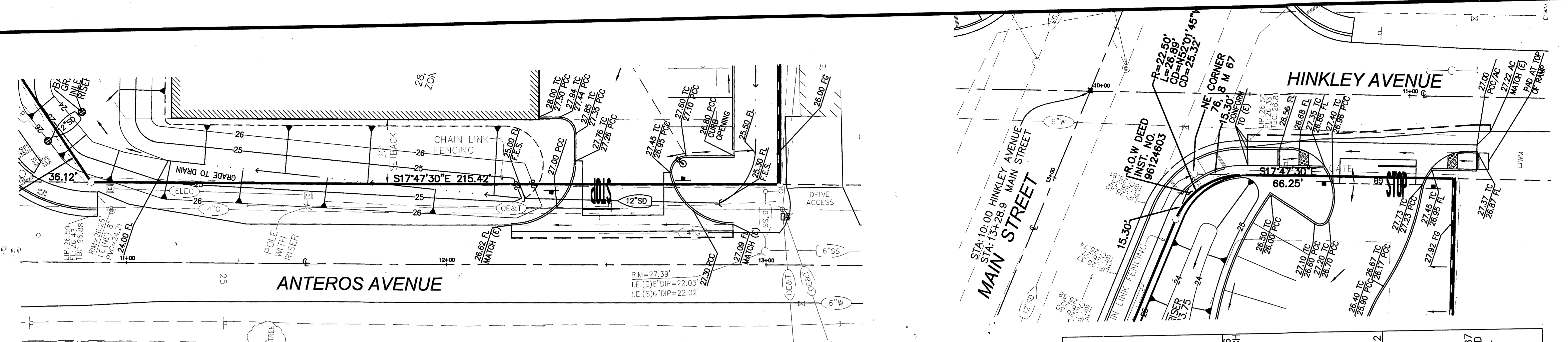
Drawing	Sheet
of	of
	Total
	13

SU 4527

Z:\2010 Projects\21003_Autozone Stockton\WORKING CAD\21003 C2 GENERAL NOTES DW PLAN AND PROFILES.DWG Fsb 28, 2011-01-13 9:31 pm

PROJECT GENERAL NOTES:

1. THE CONTRACTOR AGREES THAT, IN ACCORDANCE WITH GENERALLY ACCEPTED CONSTRUCTION PRACTICES, THE CONTRACTOR WILL BE REQUIRED TO ASSUME SOLE AND COMPLETE RESPONSIBILITY FOR JOB SITE CONDITIONS DURING THE COURSE OF CONSTRUCTION OF THE PROJECT, INCLUDING SAFETY OF ALL PERSONS AND PROPERTY. THIS REQUIREMENT SHALL BE MADE TO APPLY CONTINUOUSLY AND NOT BE LIMITED TO NORMAL WORKING HOURS. THE CONTRACTOR FURTHER AGREES TO DEFEND, INDEMNIFY AND HOLD OWNER, ENGINEER, AND SAN JOAQUIN COUNTY HARMLESS FROM ANY AND ALL LIABILITY, REAL OR ALLEGED, IN CONNECTION WITH THE PERFORMANCE OF WORK ON THIS PROJECT, EXEMPTING LIABILITY ARISING FROM THE SOLE NEGLIGENCE OF ENGINEER.
2. EXCAVATIONS SHALL BE ADEQUATELY SHORED, BRACED AND SHEETED SO THAT THE EARTH WILL NOT SLIDE OR SETTLE AND SO THAT ALL EXISTING IMPROVEMENTS OF ANY KIND WILL BE FULLY PROTECTED FROM DAMAGE. ANY DAMAGE RESULTING FROM A LACK OF ADEQUATE SHORING, BRACING AND SHEETING, SHALL BE THE RESPONSIBILITY OF THE CONTRACTOR AND HE SHALL EFFECT NECESSARY REPAIRS OR RECONSTRUCTION AT HIS OWN EXPENSE. WHERE THE EXCAVATION FOR A CONDUIT TRENCH, AND/OR STRUCTURE IS FIVE FEET OR MORE IN DEPTH, THE CONTRACTOR SHALL PROVIDE ADEQUATE SHEETING, SHORING AND BRACING OR EQUIVALENT METHOD, FOR THE PROTECTION OF LIFE, OR LIMB, WHICH SHALL CONFORM TO THE APPLICABLE CONSTRUCTION SAFETY ORDERS OF THE DIVISION OF INDUSTRIAL SAFETY OF THE STATE OF CALIFORNIA. THE CONTRACTOR SHALL ALWAYS COMPLY WITH OSHA REQUIREMENTS.
3. IT IS THE RESPONSIBILITY OF THE CONTRACTOR TO OBTAIN PERMITS NECESSARY TO PERFORM THE WORK SHOWN ON THESE PLANS FROM THE APPROPRIATE AGENCIES.
4. THE CONTRACTOR SHALL TAKE EFFECTIVE ACTION TO PREVENT THE FORMATION OF AN AIRBORNE DUST NUISANCE AND SHALL BE RESPONSIBLE FOR ANY DAMAGE RESULTING FROM HIS FAILURE TO DO SO.
5. THE CONTRACTOR SHALL PROVIDE FOR INGRESS AND EGRESS FOR PRIVATE PROPERTY ADJACENT TO WORK THROUGHOUT THE PERIOD OF CONSTRUCTION.
6. THE CONTRACTOR SHALL PROVIDE ALL LIGHTS, SIGNS, BARRICADES, FLAGMEN OR OTHER DEVICES NECESSARY TO PROVIDE FOR SAFETY. PLACEMENT OF TRAFFIC CONTROL DEVICES SHALL BE IN ACCORDANCE WITH M.U.T.C.D.
7. THE CONTRACTOR SHALL POST EMERGENCY TELEPHONE NUMBERS FOR POLICE, FIRE, AMBULANCE, AND THOSE AGENCIES RESPONSIBLE FOR MAINTENANCE OF UTILITIES IN THE VICINITY OF JOBSITE.
8. ANY EXTRA CONSTRUCTION STAKING NECESSITATED SOLELY BY THE CONTRACTOR'S NEGLIGENCE WILL BE CHARGED TO THE CONTRACTOR ON A TIME AND MATERIAL BASIS, AND PAID FOR BY THE CONTRACTOR.
9. STATIONING HEREON IS ALONG STREET CENTERLINE UNLESS OTHERWISE SHOWN OR INDICATED.
10. ALL RETURN RADII AND CURB DATA ARE TO FACE OF CURB.
11. ALL QUANTITIES AND PAY ITEMS ARE AND WILL BE BASED ON HORIZONTAL MEASUREMENTS.
12. LENGTHS OF SANITARY SEWERS AND STORM DRAINS ARE HORIZONTAL DISTANCES FROM CENTER TO CENTER OF STRUCTURES, ROUNDED OFF TO THE NEAREST FOOT.
13. EXISTING UNDERGROUND UTILITIES AND IMPROVEMENTS ARE SHOWN IN THEIR APPROXIMATE LOCATIONS BASED UPON RECORD INFORMATION AVAILABLE TO THE ENGINEER AT THE TIME OF AND NO GUARANTEE IS MADE AS TO THE ACCURACY OR COMPLETENESS OF THE INFORMATION SHOWN. THE CONTRACTOR SHALL NOTIFY UTILITY COMPANIES AT LEAST 2 WORKING DAYS IN ADVANCE OF CONSTRUCTION TO FIELD LOCATE UTILITIES. CALL UNDERGROUND SERVICE ALERT (U.S.A.) AT 800-CALL-4444. IT SHALL BE THE RESPONSIBILITY OF THE CONTRACTOR TO DETERMINE THE EXISTENCE AND LOCATION OF THOSE UTILITIES SHOWN ON THESE PLANS OR INDICATED IN THE FIELD BY LOCATING SERVICES. ANY ADDITIONAL COSTS INCURRED AS A RESULT OF CONTRACTOR'S FAILURE TO VERIFY LOCATIONS OF EXISTING UTILITIES PRIOR TO BEGINNING OF CONSTRUCTION IN THEIR VICINITY SHALL BE BORNE BY THE CONTRACTOR AND ASSUMED INCLUDED AND MERGED IN THE CONTRACT UNIT PRICE.
14. ALL EXISTING UTILITIES AND IMPROVEMENTS THAT BECOME DAMAGED DURING CONSTRUCTION SHALL BE COMPLETELY RESTORED TO THE SATISFACTION OF THE LOCAL AGENCY ENGINEER, AT THE CONTRACTOR'S SOLE EXPENSE.
15. ANY RELOCATION OF PUBLIC UTILITIES SHALL BE CONDUCTED IN ACCORDANCE WITH ANY AND ALL REQUIREMENTS OF THE UTILITY COMPANY INCLUDING FEES, BONDS, PERMITS AND WORKING CONDITIONS, ETC. THIS WORK SHALL BE DONE AT NO EXPENSE TO THE UTILITY COMPANY. THE OWNER SHALL PAY THE COST OF ALL SUCH RELOCATION WORK INCLUDING FEES, BONDS, PERMITS, ETC.
16. IF ARCHAEOLOGICAL MATERIALS ARE UNCOVERED DURING GRADING, TRENCHING OR OTHER EXCAVATION, EARTHWORK WITHIN 100 FEET OF THESE MATERIALS SHALL BE STOPPED UNTIL A PROFESSIONAL ARCHAEOLOGIST WHO IS CERTIFIED BY THE SOCIETY OF CALIFORNIA ARCHAEOLOGY (SCA) AND/OR THE SOCIETY OF PROFESSIONAL ARCHAEOLOGY (SOPA) HAS HAD AN OPPORTUNITY TO EVALUATE THE SIGNIFICANCE OF THE FIND AND SUGGEST APPROPRIATE MITIGATION MEASURES, IF THEY ARE DEEMED NECESSARY.
17. RFE ENGINEERING, INC. DOES NOT SPECIFY NOR RECOMMEND THE USE OF INSTALLATION OF ANY MATERIAL OR EQUIPMENT WHICH IS MADE FROM, OR WHICH CONTAINS ASBESTOS FOR USE IN THE CONSTRUCTION OF THESE IMPROVEMENTS. ANY PARTY INSTALLING OR USING SUCH MATERIAL OR EQUIPMENT SHALL BE SOLELY RESPONSIBLE FOR ALL INJURIES, DAMAGES OR LIABILITIES, OF ANY KIND, CAUSED BY THE USE OF SUCH MATERIALS OR EQUIPMENT. THE PROVISIONS OF THIS NOTE SHALL APPLY UNLESS THEY ARE EXPRESSLY WAIVED IN WRITING BY RFE ENGINEERING, INC.
18. SHOULD IT APPEAR THAT THE WORK TO BE DONE OR ANY MATTER RELATIVE THERETO IS NOT SUFFICIENTLY DETAILED OR EXPLAINED ON THESE PLANS, THE CONTRACTOR SHALL CONTACT RFE ENGINEERING, INC., AT (916) 989-3285 FOR SUCH FURTHER EXPLANATIONS AS MAY BE NECESSARY.
19. ALL CONSTRUCTION SHALL BE IN ACCORDANCE WITH THE GEOTECHNICAL REPORT PREPARED BY PSI, INC. DATED JULY 16, 2010, REPORT NO. 575-190.
20. ALL CONSTRUCTION AND MATERIALS SHALL BE IN ACCORDANCE WITH THE LATEST EDITION OF THE SAN JOAQUIN COUNTY IMPROVEMENT STANDARDS.
21. FINAL PAVEMENT WORK SHALL NOT OCCUR WITHIN THE ROAD RIGHT-OF-WAY PRIOR TO COMPLETION OF THE UTILITY RELOCATION WITHOUT SPECIFIC APPROVAL OF THE DIRECTOR.
22. WHENEVER PAVEMENT IS BROKEN OR CUT IN THE INSTALLATION OF THE WORK COVERED BY THE SPECIFICATIONS, THE PAVEMENT SHALL BE REPLACED AFTER PROPER BACK FILLING WITH PAVEMENT MATERIAL EQUAL TO OR BETTER THAN THE MATERIALS USED IN THE ORIGINAL PAVING.
23. DRAINAGE FACILITIES SHALL BE MAINTAINED DURING PERIODS OF INCLEMENT WEATHER, AND RESTORED TO THEIR ORIGINAL CONDITIONS UPON COMPLETION OF THE WORK.



DATE	BY	CHECK	NO.	REVISION

DESIGN	BY	RFE
DRAWN	DCU	RFE
QUANT.		

ORIGINAL SCALE IS IN INCHES

3/11

RFE Engineering, Inc.
 Civil Engineers • Planners • Surveyors
 6880 Greenback Lane, Suite 107, Sacramento, CA 95862
 PH: (916) 989-3587
 www.RFEEngineering.com

AUTOZONE INC.
 129 S. FRONT STREET
 MEMPHIS, TN 38103
 CONTACT: MITCH BRAMLITT
 PH: (901) 495-8714

AUTOZONE STORE NO. 4036
 3828 MAIN STREET
 STOCKTON (SAN JOAQUIN COUNTY) CA 95215

GENERAL NOTES / DRIVEWAY PLAN AND PROFILES

Drawing	Sheet
of	C2
Total	13

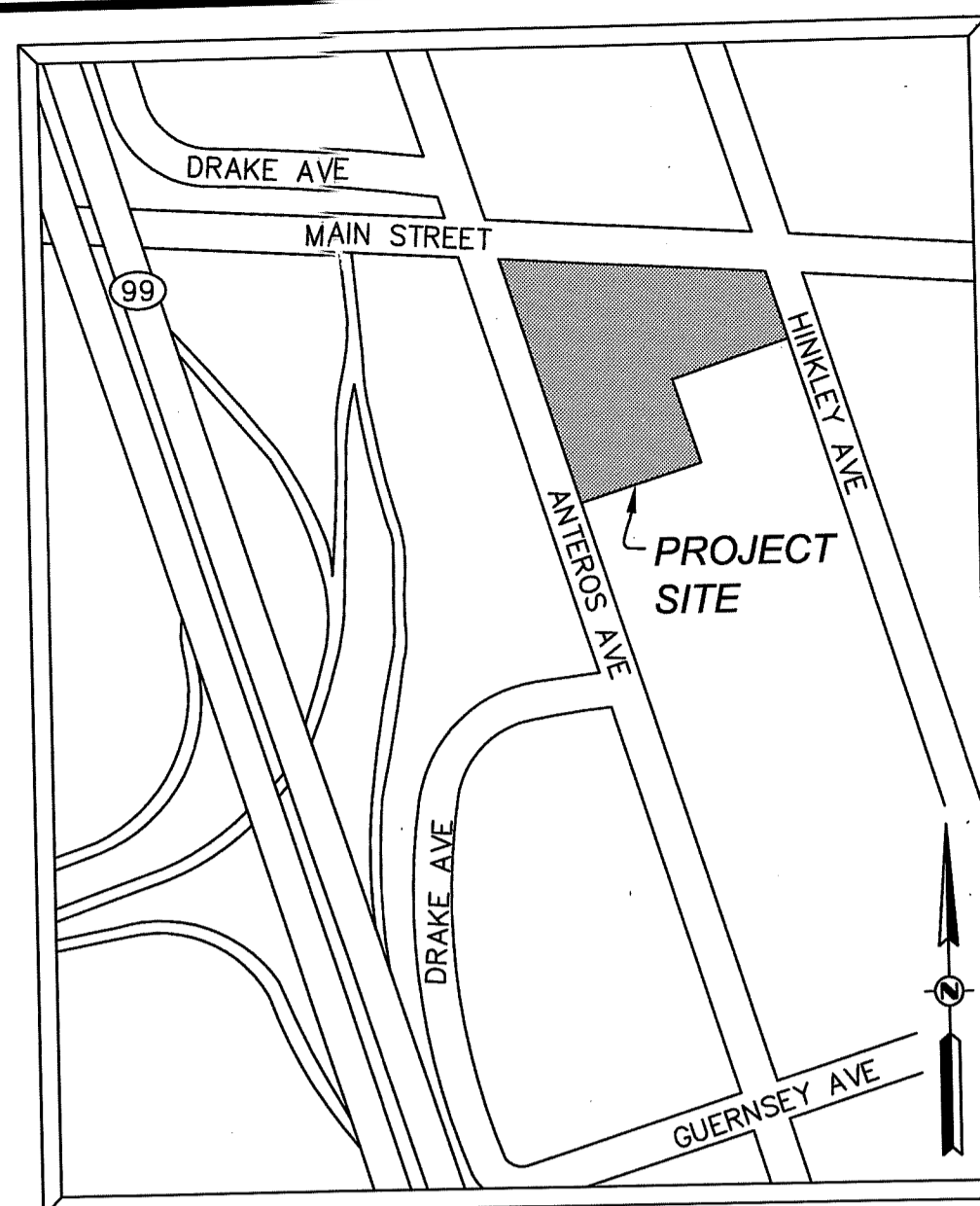
2/23/2011 21003

21003_AUTOZONE STORE NO. 4036 - 3828 MAIN STREET, STOCKTON, CA 95215

AUTOZONE STORE #4036

APN: 157-273-01, 157-273-02

3828 MAIN STREET
STOCKTON, CALIFORNIA 95215

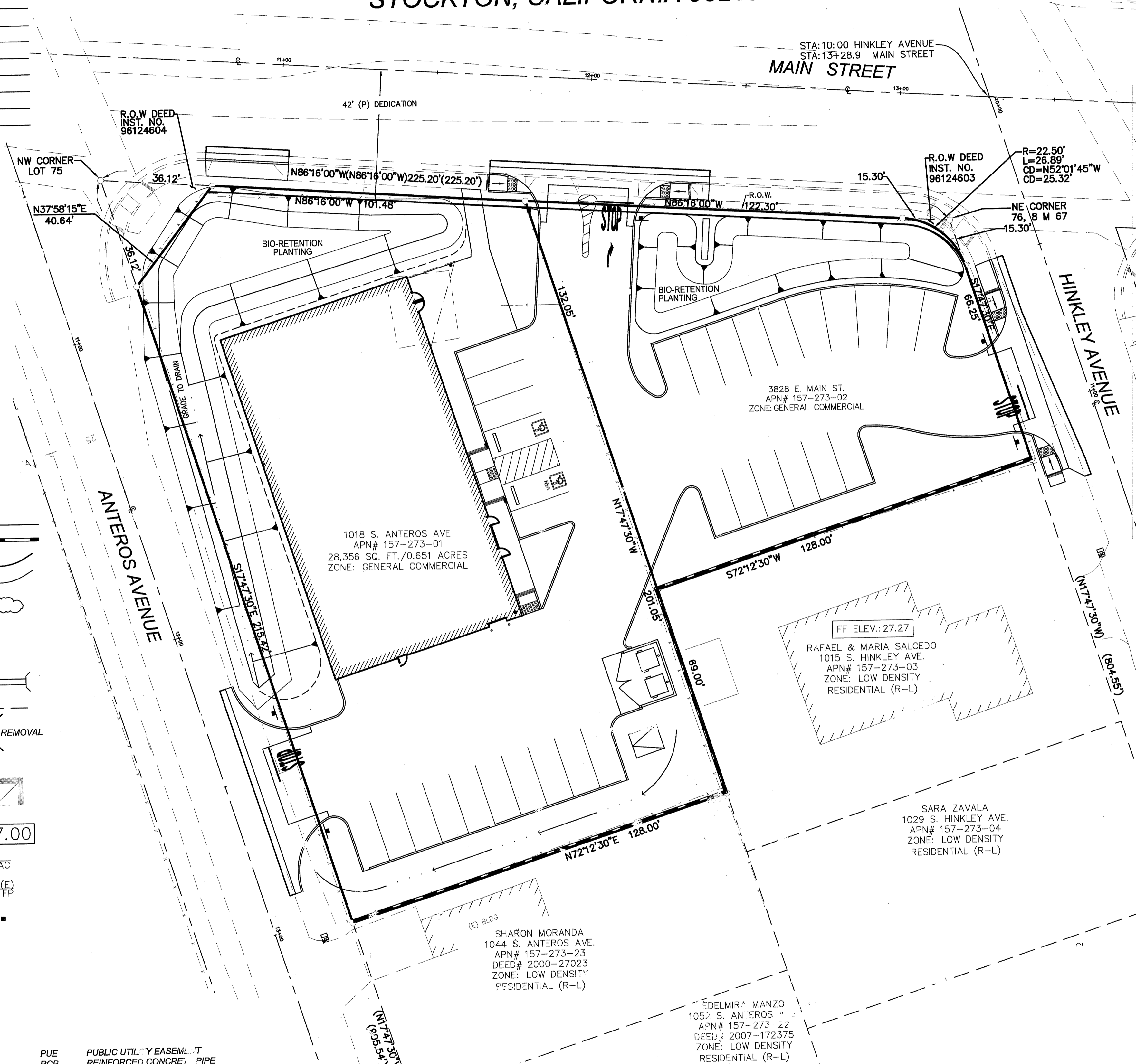


VICINITY MAP
NOT TO SCALE

DESCRIPTION	EXISTING	PROPOSED
EASEMENT		
LOT LINE		
ROW		
CENTERLINE		
SW, CURB & GUTTER		
DITCH		
EP		
STORM DRAIN	XX" SD	XX" SD
SANITARY SEWER	XX" SS	XX" SS
WATER	XX"W	XX"W
DOMESTIC WATER	XX"DW	XX"DW
FIRE SERVICE	XX"FS	XX"FS
GAS LINE	XX"G	XX"G
SDMH		
DROP INLET		
DIRECTION OF SURFACE FLOW		
OVERLAND RELEASE PATH		
SSMH		
SSCO		
FIRE HYDRANT		
PV		
WC		
WATER VALVE		
WATER METER		
CONCENTRIC REDUCER		
REDUCED PRINCIPAL PRESSURE ASSEMBLY		
REDUCED PRESSURE BACKFLOW PREVENTOR		
MONUMENT		
BOLLARD		
UTILITY POLE		
UTILITY POLE WITH LIGHT		
STREET LIGHT		
DOUBLE POST TOP STREET LIGHT		
FENCE		
BLOCK WALL		
INDEX CONTOUR		
INTERMEDIATE CONTOURS		
HEDGE		
AIR RELEASE VALVE		
JUNCTION/PULL BOX		
SIGN		
CULVERT		
GRADE BREAK LINE		
TREE & DRIP		
PIPE CAP		
HANDICAP RAMP		
FINISH FLOOR ELEVATION	FF 127.00	FF 127.00
FINISH GRADE ELEVATION (ASPHALT CONCRETE)		127.50 AC
MATCH (E) GRADE ELEVATION		127.50 FF
BLOW OFF ASSEMBLY		
TRUNCATED DOMES		

ABBREVIATIONS:

AB	AGGREGATE BASE	FL	FLOW LINE	PUE	PUBLIC UTILITY EASEMENT
AC	ASPHALT CONCRETE	FP	FINISH PAVEMENT	RCP	REINFORCED CONCRETE PIPE
ARV	AIR RELEASE VALVE	FS	FIRE SPRINKLER	ROW	RIGHT-OF-WAY
BC	BEGIN CURVE	GB	GRADE BREAK	RT	RIGHT TURN
BCR	BEGIN CURB RETURN	GR	GRATE	RPPA	REDUCED PRINCIPAL PRESSURE ASSEMBLY
BOW	BACK-OF-WALK	GV	GATE VALVE	SD	STORM DRAIN MANHOLE
CH	CHORD	GWV	GROSS VEHICLE WEIGHT	SDMH	STORM DRAIN
C	CENTERLINE	HC	HANDICAP	SS	SANITARY SEWER
CMP	CORRUGATED METAL PIPE	HP	HIGH POINT	SSCO	SANITARY SEWER CLEAN OUT
DI	DROP INLET	IRR	IRRIGATION	SSMH	SANITARY SEWER MANHOLE
DIS	DUCTILE IRON PIPE	INV	INVERT	SW	SIDEWALK
DS	DOWN SPOUT	LT	LEFT TURN	STA	STATION
(E)	EXISTING	OMP	OPEN METAL PIPE	TC	TOP OF CURB
EC	END CURVE	MB	MAIL BOX	TP	TOP OF PAVEMENT
ECR	END CURB RETURN	(P)	PROPOSED	TS	TOP OF SIDEWALK
EP	EDGE OF PAVEMENT	PCC	PORTLAND CEMENT CONCRETE	TG	TOP OF GRATE
FDC	FIRE DEPARTMENT CONNECTION	PG	PROFILE GRADE	W	WATER
FF	FINISH FLOOR	PV	POST INDICATOR VALVE	WW	WATER VALVE
FG	FINISHED GROUND	POC	POINT OF CONNECTION	WM	WATER METER
FH	FIRE HYDRANT	PL	PROPERTY LINE	WWF	WELDED WIRE FABRIC



**COUNTY OF SAN JOAQUIN
DEPARTMENT OF PUBLIC WORKS**

APPROVED AS "ENCROACHMENT PERMIT PLAN SET"
APPROVED FOR WORK WITHIN COUNTY RIGHT-OF-WAY ONLY

APPROVED: *Wesley Crutcher* 3/11/2011
SENIOR CIVIL ENGINEER DATE

RCE NO.: **C55407** EXP. DATE: **12/31/2012**

BASIS OF BEARINGS.
THE SOUTHERLY LINE OF MAIN STREET (COPPER/COPPER/OLIS ROAD) AS SHOWN ON BURKETT ACRES, RECORDED IN BOOK 8 OF MAPS, PAGE 67, SAN JOAQUIN COUNTY RECORDS. TAKEN TO BEAR: SOUTH 86°16' EAST.

BASIS OF ELEVATIONS:
A BRASS DISK MARKING CALTRANS MONUMENT PM 18.14 ON THE SOUTH SIDE OF THE MAIN ST. BRIDGE OVER U.S. HIGHWAY 99. ELEVATION = 34.80. (CITY OF STOCKTON DATUM) BENCHMARK INFO MATIION FOUND ONLINE AT THE CITY OF STOCKTON PUBLIC WORKS DEPARTMENT SITE.

SITE BENCHMARK:
SITE BENCHMARK #1: THE NORTHEAST BOLT OF THE NORTHEAST TRAFFIC SIGNAL POLE AT THE SOUTHEAST CORNER OF S. ANTEROS AND E. MAIN ST. ELEVATION = 27.56 FEET. (CITY OF STOCKTON DATUM).

- SHEET INDEX:**
- C1 TITLE SHEET
 - C2 GENERAL NOTES / DRIVEWAY PLAN AND PROFILES
 - C3 EXISTING CONDITIONS
 - C4 DEMOLITION PLAN
 - C5 SITE PLAN
 - C6 GRADING, DRAINAGE AND PAVING PLAN
 - C7 UTILITY PLAN
 - C8 EROSION CONTROL PLAN
 - C9 CONSTRUCTION DETAILS
 - L1 IRRIGATION DETAILS AND NOTES
 - L2 IRRIGATION PLAN
 - L3 PLANTING LEGEND AND NOTES
 - L4 PLANTING PLAN

STORM WATER:
SAN JOAQUIN COUNTY
DEPARTMENT OF PUBLIC WORKS
1810 EAST HAZELTON AVE
STOCKTON, CA 95205
PHONE: (209) 468-3000

WATER:
CALIFORNIA WATER SERVICE COMPANY
1550 W. FREMONT ST. SUITE 100
STOCKTON, CA 95203
PHONE: (209) 464-8311

SEWER - TREATMENT/COLLECTION:
CITY OF STOCKTON, MUNICIPAL UTILITIES
2500 NAVY DRIVE
STOCKTON, CA 95206
PHONE: (209) 937-8436

GAS & ELECTRIC:
PACIFIC GAS & ELECTRIC
WILLIAM MALBROUGH (ELECTRIC)
WXM4@PGE.COM
ROBERT MALDONADO (GAS)
RMMK@PGE.COM

TELEPHONE:
AT&T
1-800-750-2355

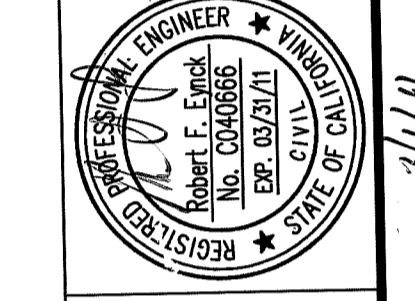
CALTRANS:
DISTRICT 10
1976 E. CHARTER WAY/EAST DR. MARTIN LUTHER KING JR. BLVD.
STOCKTON, CA 95205
(209) 948-7543

ZONING:
THIS PROPERTY IS ZONED "CG" - GENERAL COMMERCIAL PER COUNTY OF SAN JOAQUIN PLANNING DEPARTMENT. SETBACKS ARE AS FOLLOWS:
FRONT: 20'
STREET: 20'
REAR: NONE
BUILDING HEIGHT LIMIT: 45'

FLOOD ZONE:
THIS PROPERTY IS LOCATED WITHIN FLOOD ZONE "X". FLOOD ZONE "X" IS DEFINED AS AREAS OF 0.2% ANNUAL CHANCE FLOOD; AREAS OF 1% ANNUAL CHANCE FLOOD WITH AVERAGE DEPTHS OF LESS THAN 1 FOOT OR WITH DRAINAGE AREAS LESS THAN 1 SQUARE MILE; AND AREAS PROTECTED BY LEVEES FROM 1% ANNUAL CHANCE FLOOD.
MAP NUMBER: 06077C0480F
PANEL 480 OF 950
EFFECTIVE DATE: OCTOBER 16, 2009
FOR SAN JOAQUIN COUNTY, CALIFORNIA AND INCORPORATED AREAS

Call before you Dig.
1-800-642-2444
UNDERGROUND SERVICE ALERT (USA)

BY	DATE	NO.	REVISION



RFE Engineering, Inc.
Civil Engineers • Planners • Surveyors
1800 Granddick Lane, Suite 107, Orangevale, CA 95662
PH: (916) 988-3285 Fax: (916) 988-3397
www.RFEEngineering.com

AUTOZONE, INC.
123 S. FRONT STREET
MEMPHIS, TN 38103
CONTACT: MITCH BRAMLITT
PH: (901) 955-8714

AUTOZONE STORE NO. 4036
3828 MAIN STREET
STOCKTON (SAN JOAQUIN COUNTY) CA 95215

Drawing	Sheet
	C1 of Total
	13

SU 4528

Z:\2010 Projects\21003 Autozone Stockton\WORKING CAD\21003 C1 TITLE SHEET.dwg Feb 23, 2011 - 01:44 pm

21003 - AUTOZONE STORE NO. 4036 - 3828 MAIN STREET, STOCKTON, CA 95215