

NOTE:  
COMPACTION UNDER LATERAL REFER TO TECHNICAL SPECIFICATIONS SECTION 2776-3.05(B)

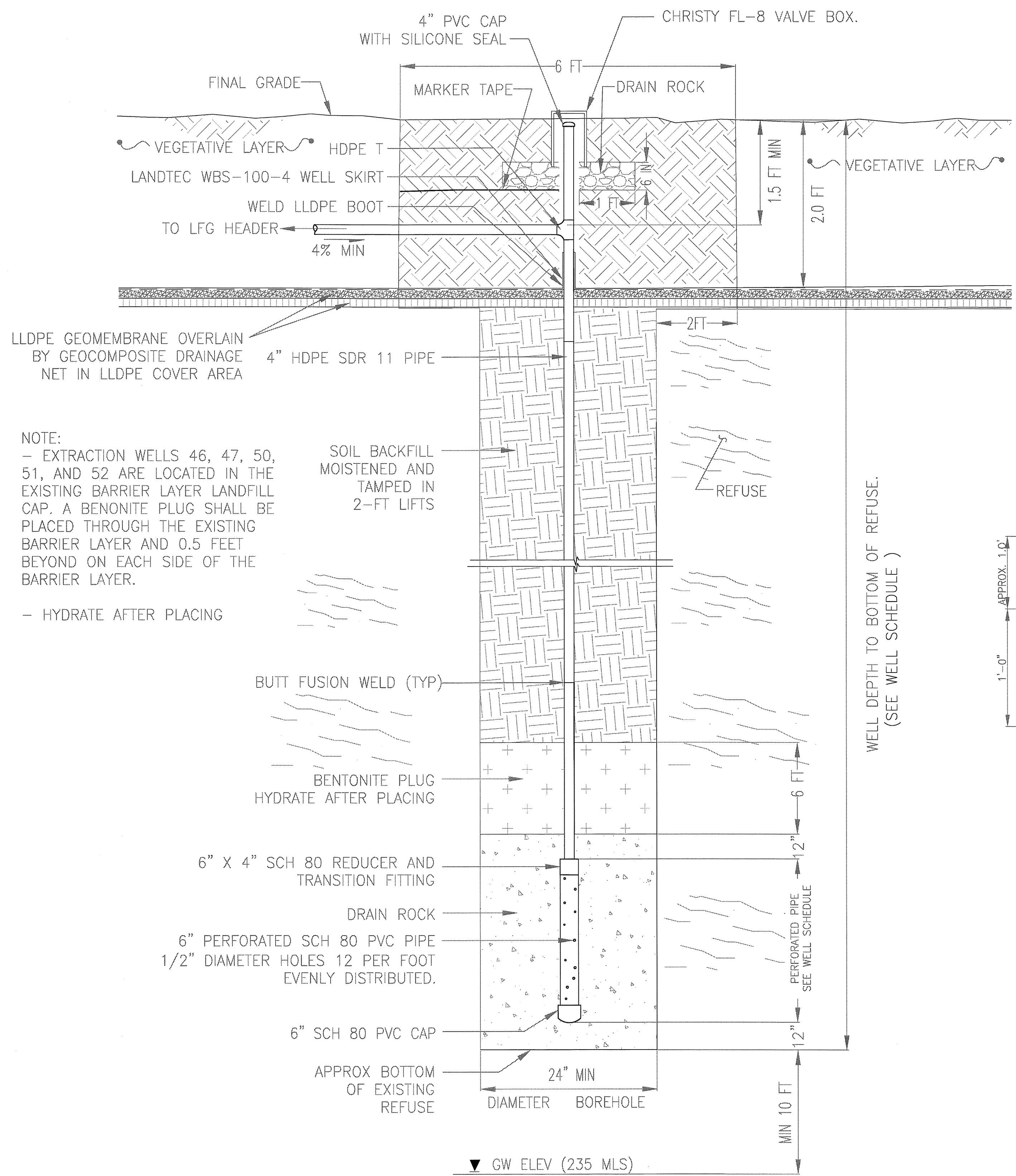
SU5034

PREPARED UNDER THE RESPONSIBLE CHARGE OF:  
  
 DO NOT USE THIS DRAWING FOR CONSTRUCTION UNLESS STAMPED AND SIGNED BY A CALIFORNIA REGISTERED CIVIL ENGINEER.

MARK	DATE	BY	CHK'D	DESCRIPTION/ISSUE
0	7/24/2012	ES	FC	ISSUED FOR BID
REVISIONS				

Sacramento, California 95834  
 Phone (916) 928-3300  
 Fax (916) 565-4356

DESIGNED BY: / DATE ES 6/7/12		<b>EXTENSION OF CLOSURE CAP CORRAL HOLLOW SANITARY LANDFILL</b>	
DRAWN BY: / DATE ES 6/7/12			
CHECKED BY: / DATE FC 6/7/12		<b>DETAILS</b>	
APPROVED BY: DATE DT 6/7/12	DATE: 6/7/2012	SCALE: AS SHOWN	PROJECT NO. 143515
			DRAWING NO. <b>8 OF 8</b>



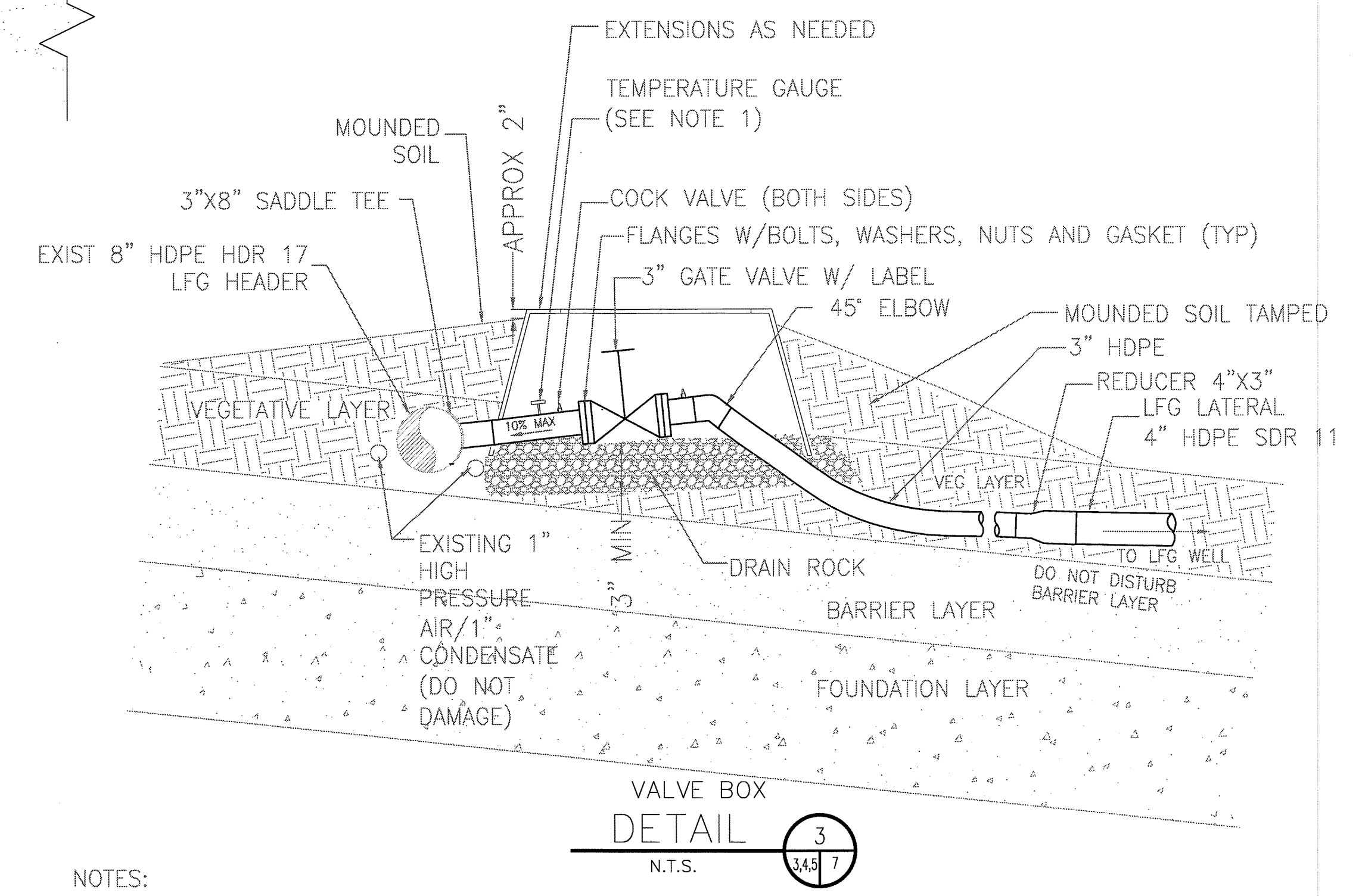
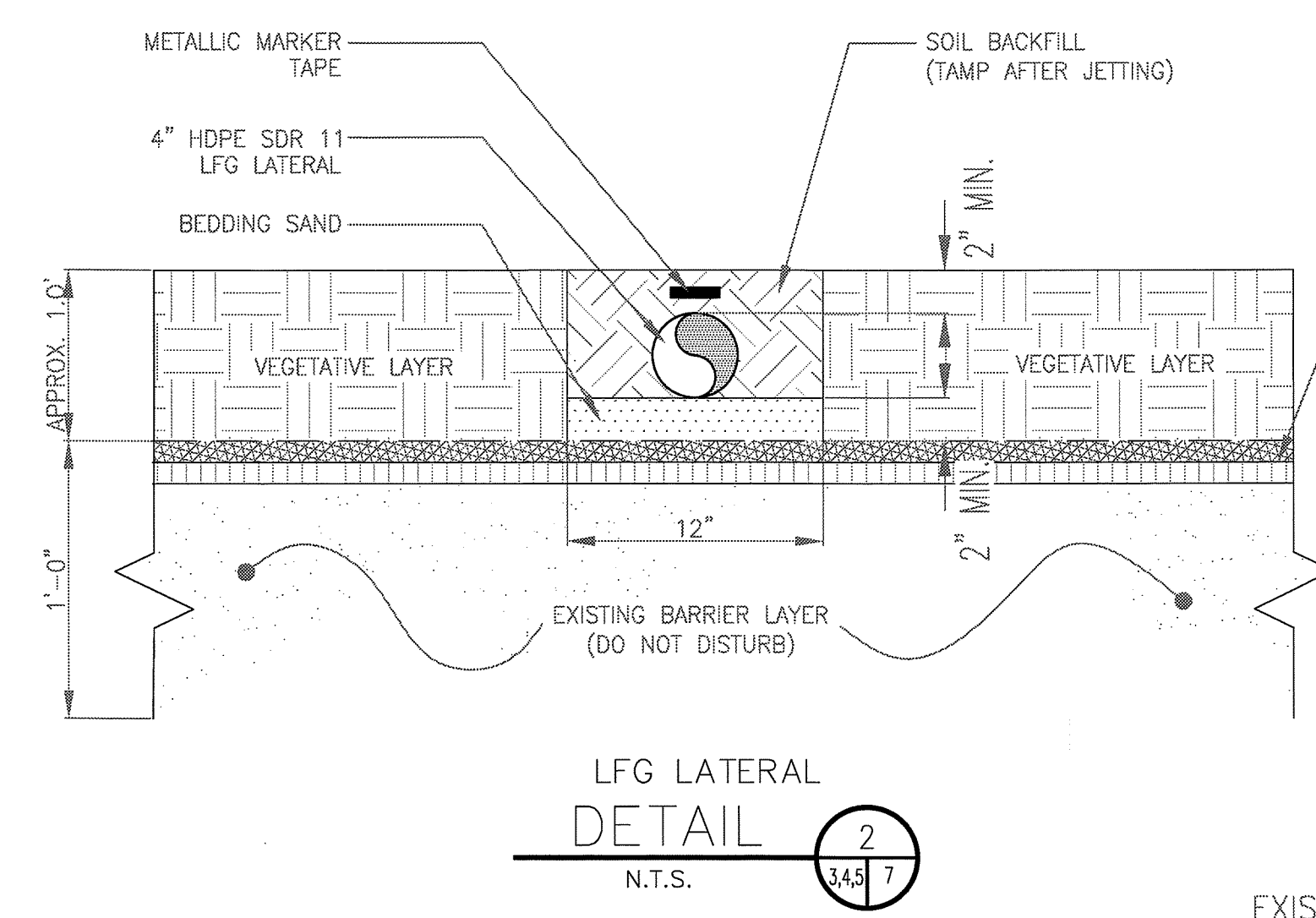
NOTE:  
- EXTRACTION WELLS 46, 47, 50, 51, AND 52 ARE LOCATED IN THE EXISTING BARRIER LAYER LANDFILL CAP. A BENONITE PLUG SHALL BE PLACED THROUGH THE EXISTING BARRIER LAYER AND 0.5 FEET BEYOND ON EACH SIDE OF THE BARRIER LAYER.  
- HYDRATE AFTER PLACING

LFG EXTRACTION WELL  
DETAIL 1  
N.T.S. 35 7

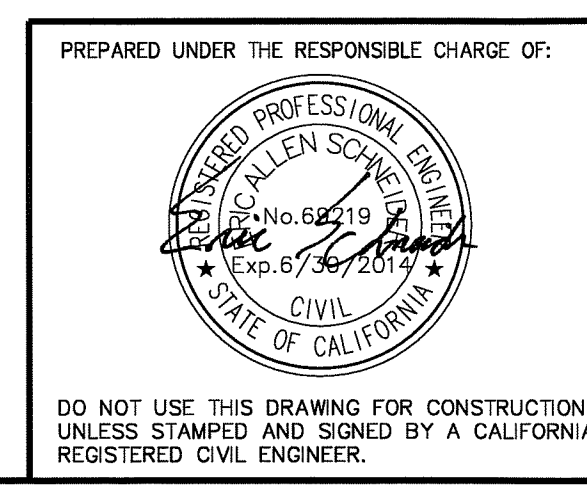
WELL SCHEDULE

WELL NUMBER	WELL EXIST GRADE (MSL)	WELL DEPTH(FT) SEE NOTE 2	PERFORATED PIPE (FT)
E-46	300	25	10
E-47	300	27	10
E-48	290	40	20
E-49	290	35	15
E-50	298	35	15
E-51	286	30	15
E-52	322	66	15

NOTE:  
1.) MAX DEPTH OF ALL LFG WELLS: 100 FT  
2.) ALL LFG WELLS TO BE INSTALLED TO THE BOTTOM OF REFUSE.



NOTES:  
1.) TEMPERATURE GAUGE SHALL BE DWYER 2 INCH INSERTION BTB 2251 OR EQUIVALENT  
2.) FOR EW-52, TIE INTO VERTICAL WELL CASING WITH A 4" TEE AND APPROPRIATE FITTINGS



PREPARED UNDER THE RESPONSIBLE CHARGE OF:

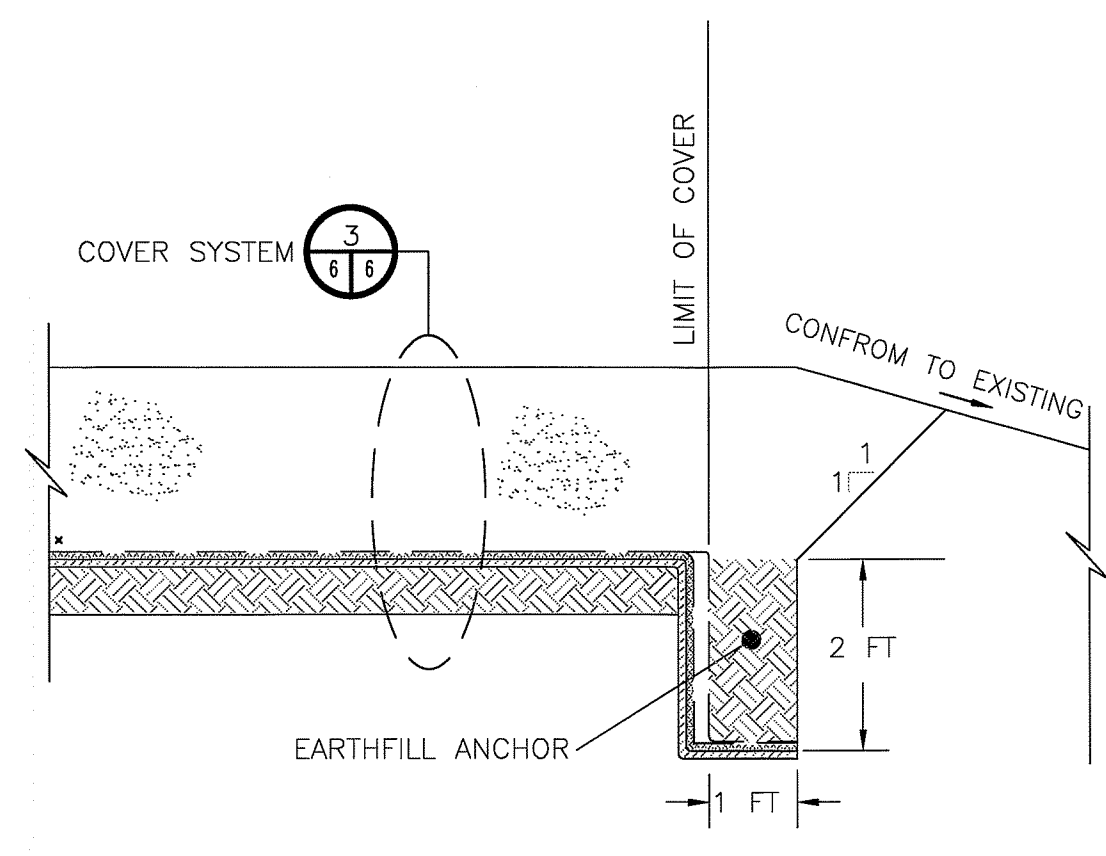
MARK	DATE	BY	CHK'D	DESCRIPTION/ISSUE
0	7/24/2012	ES	FC	ISSUED FOR BID
REVISIONS				

**Shaw** Shaw Environmental, Inc.  
180 Promenade Circle, Suite 320  
Sacramento, California 95834  
Phone (916) 928-3300  
Fax (916) 565-4356

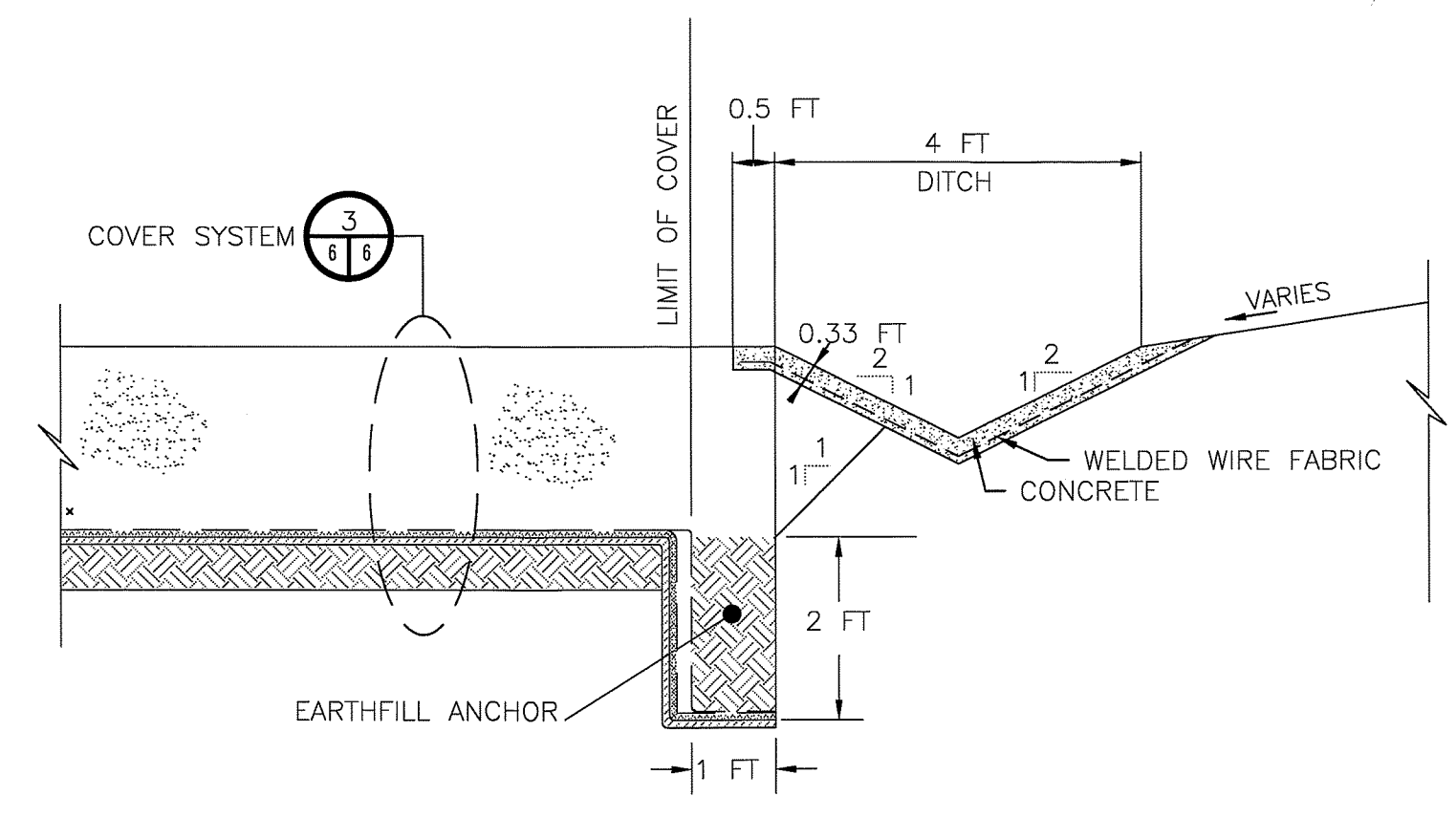
SAN JOAQUIN  
DEPARTMENT OF PUBLIC WORKS AND PLANNING  
STOCKTON CALIFORNIA

DETAILS

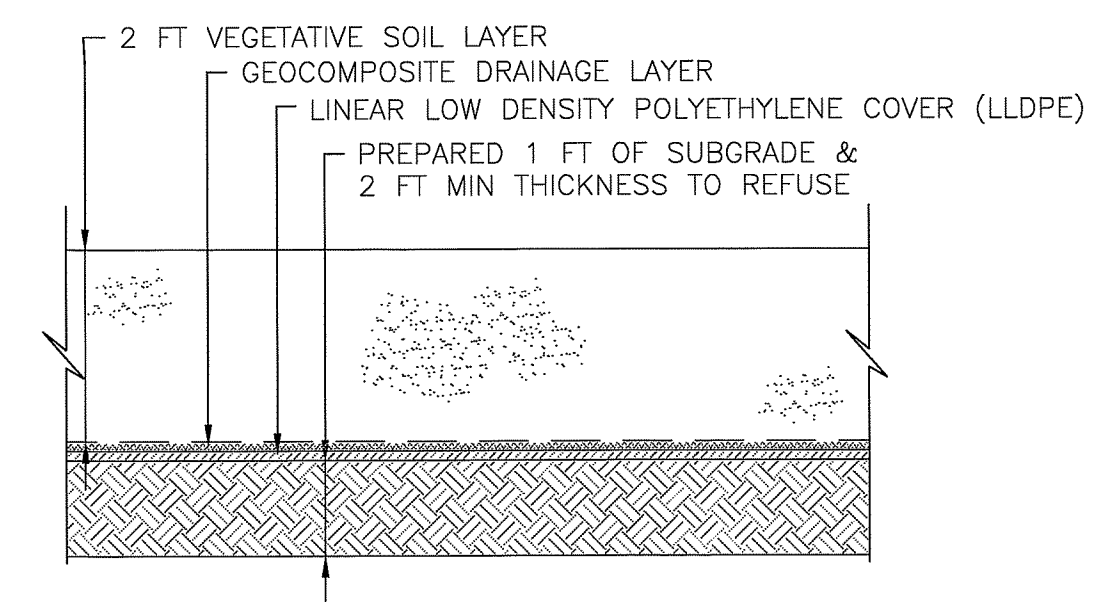
DESIGNED BY: / DATE ES 6/7/12	DRAWN BY: / DATE ES 6/7/12		APPROVED BY: DATE DT 6/7/12	DATE: 6/7/2012	SCALE: AS SHOWN	PROJECT NO. 143515	DRAWING NO. 7 OF 8
----------------------------------	-------------------------------	--	--------------------------------	-------------------	--------------------	-----------------------	-----------------------



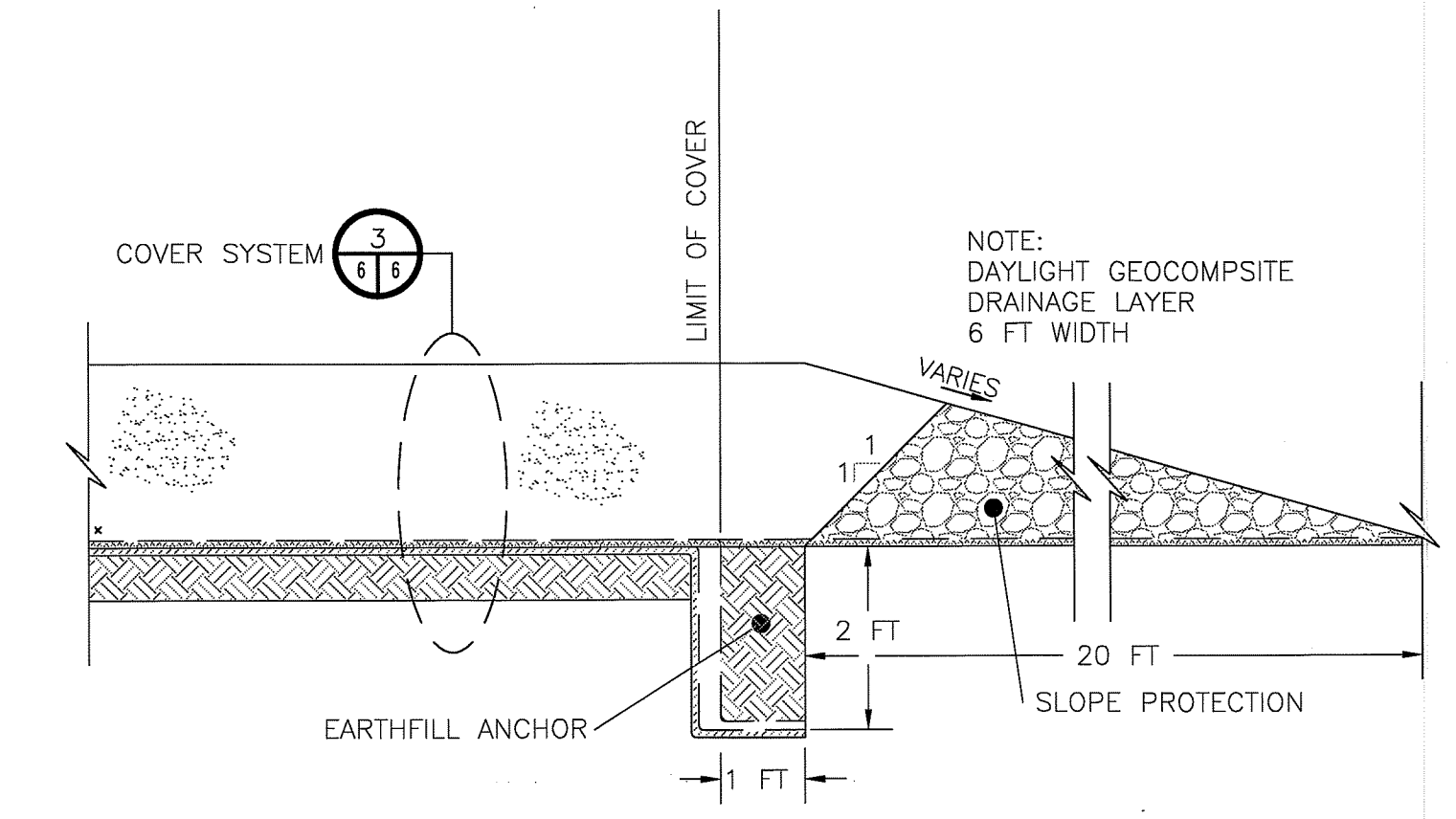
ANCHOR TRENCH  
 DETAIL 1  
 1 INCH = 2 FT



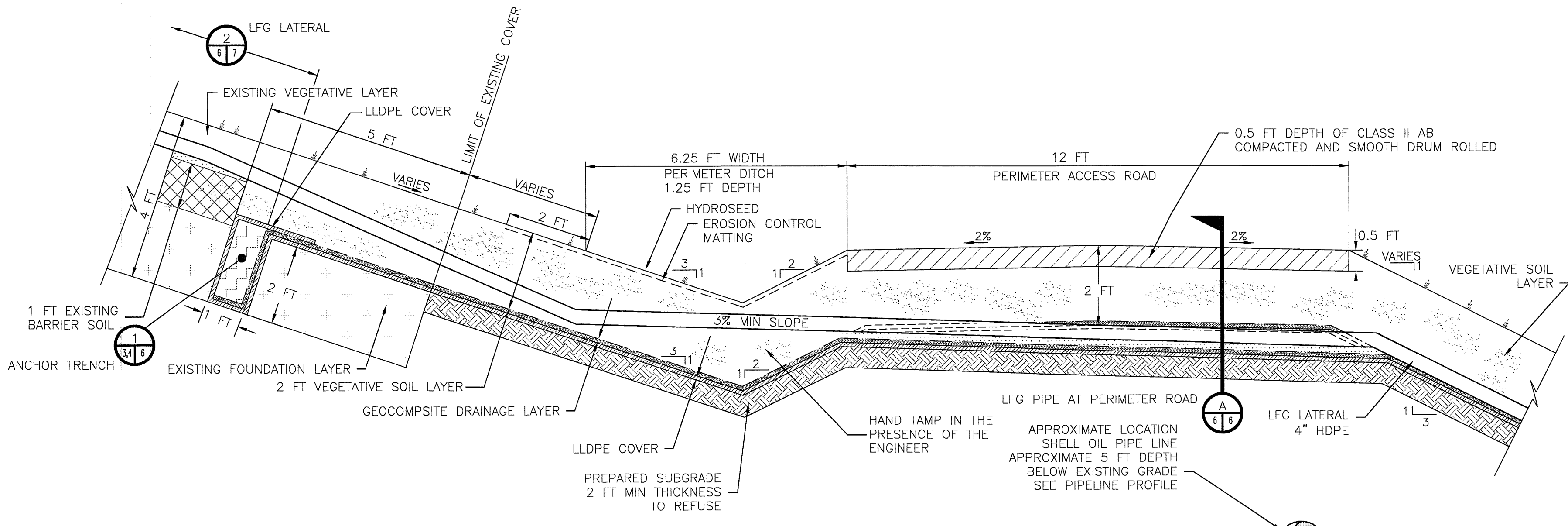
ANCHOR TRENCH AND DITCH  
 DETAIL 2  
 1 INCH = 2 FT



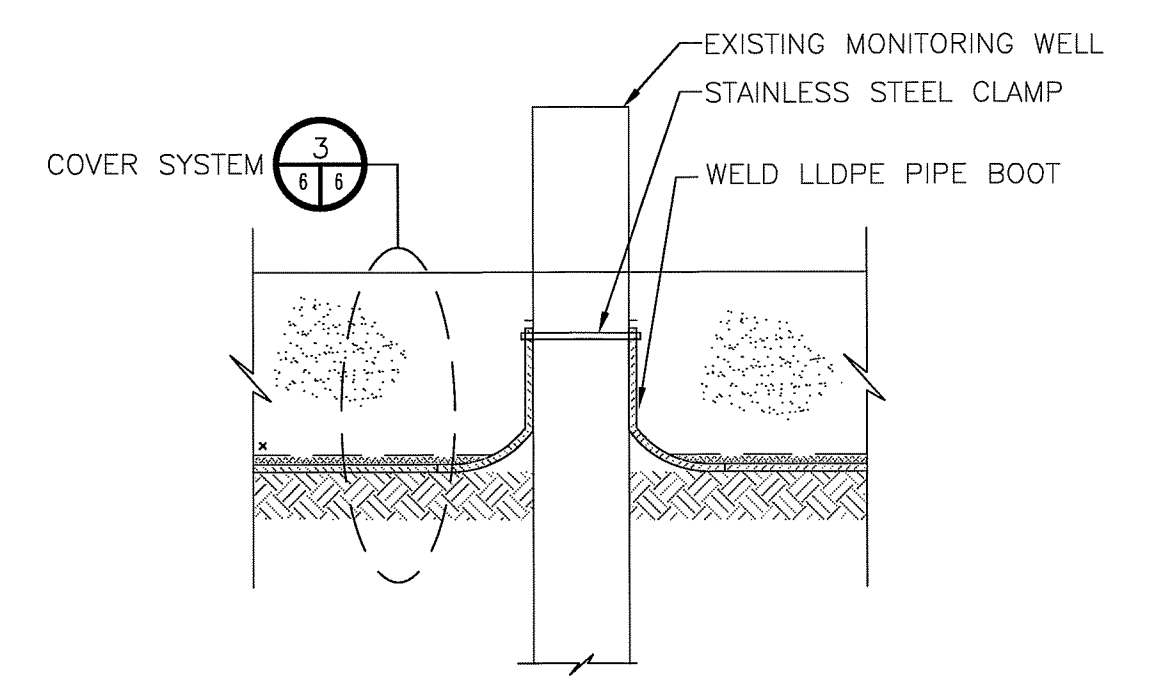
COVER SYSTEM  
 DETAIL 3  
 1 INCH = 2 FT



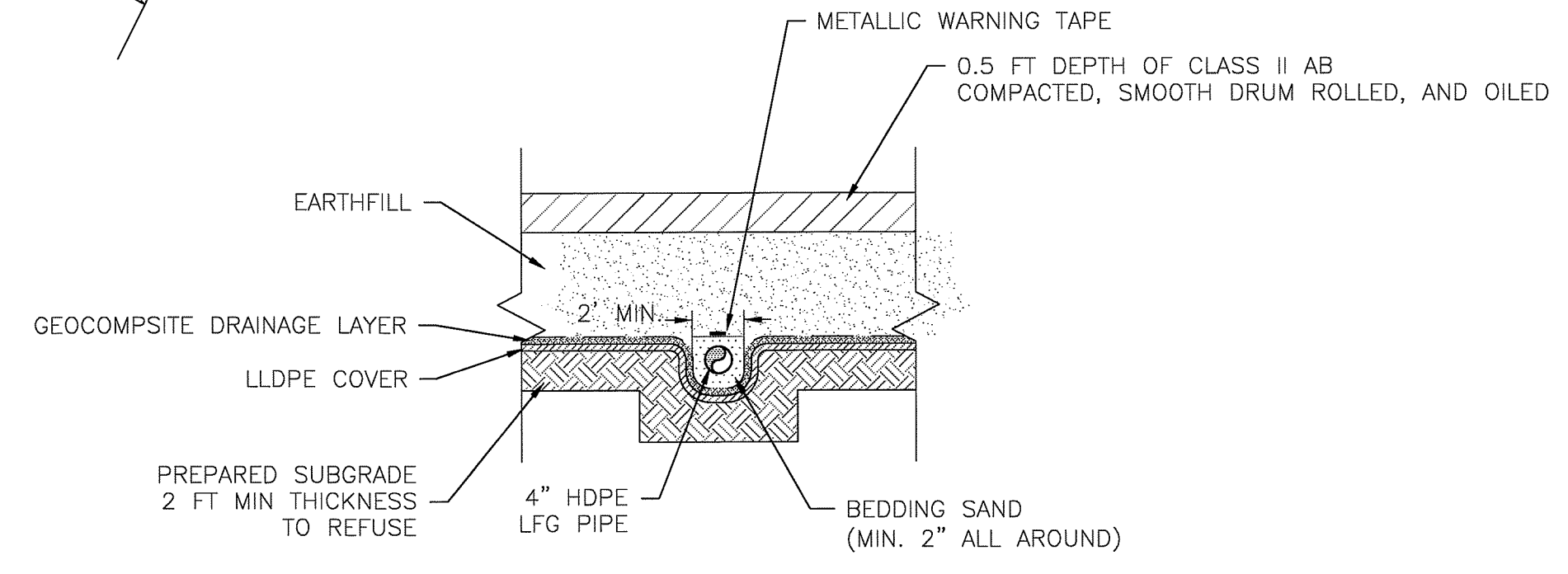
DRAINAGE LAYER RELIEF  
 DETAIL 5  
 NTS



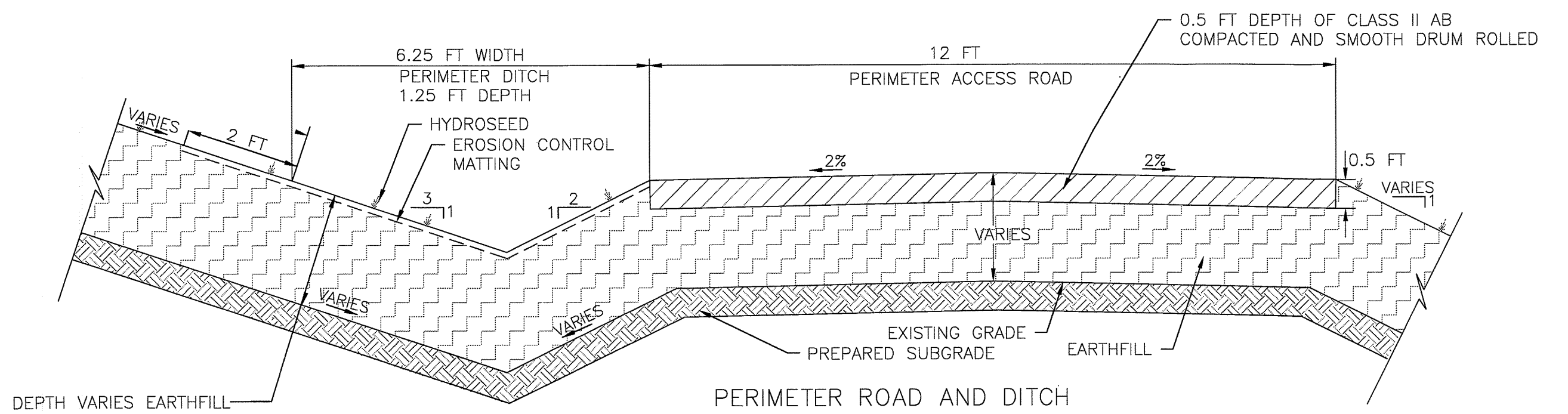
PERIMETER ROAD AND DITCH  
 DETAIL 4  
 1 INCH = 2 FT



BOOT AT MONITORING WELL  
 DETAIL 6  
 1 INCH = 2 FT  
 NOTE:  
 1. USE ALSO FOR PIPE LINE VENT

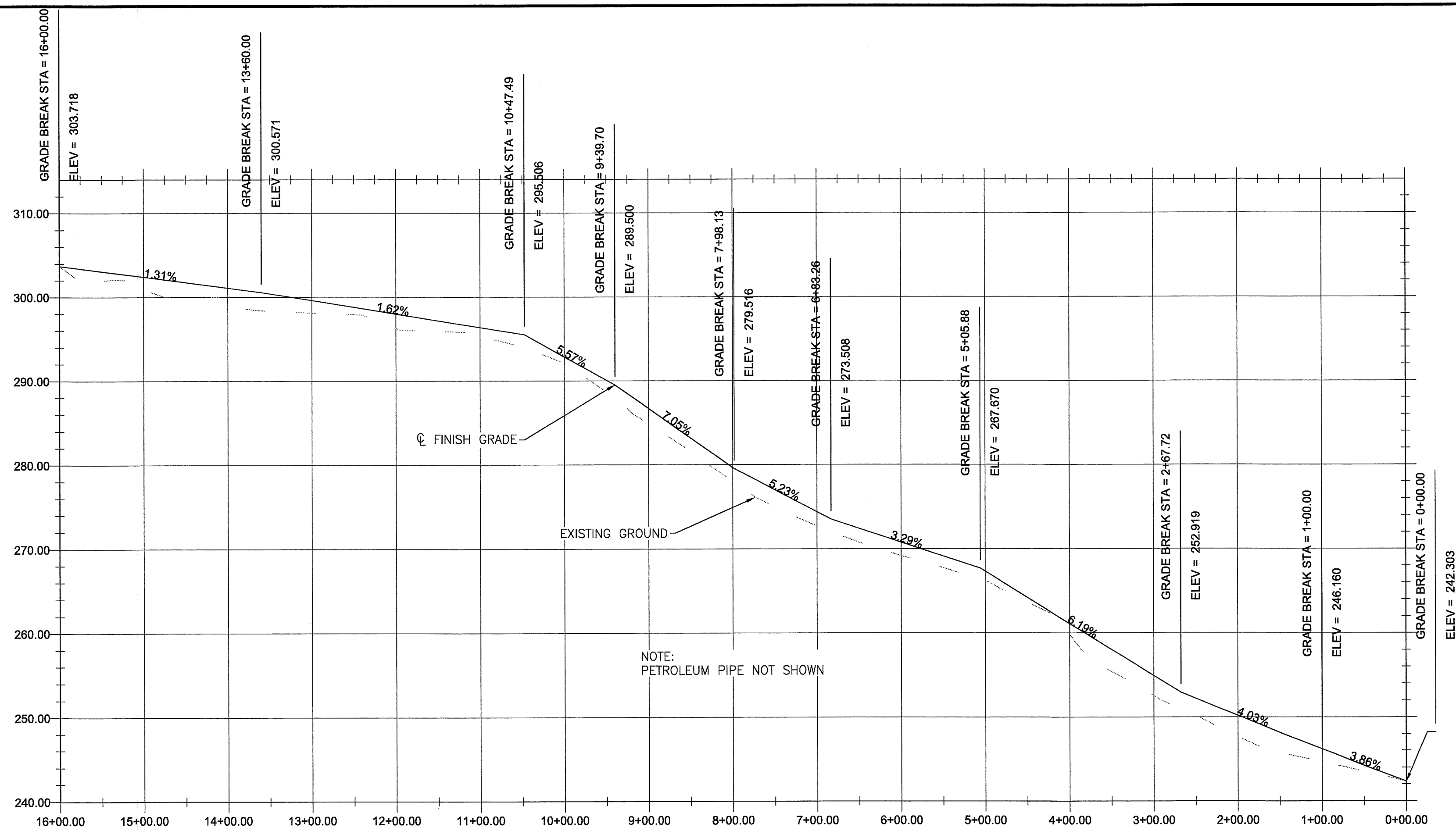


LFG PIPE AT PERIMETER ROAD  
 SECTION A  
 NTS

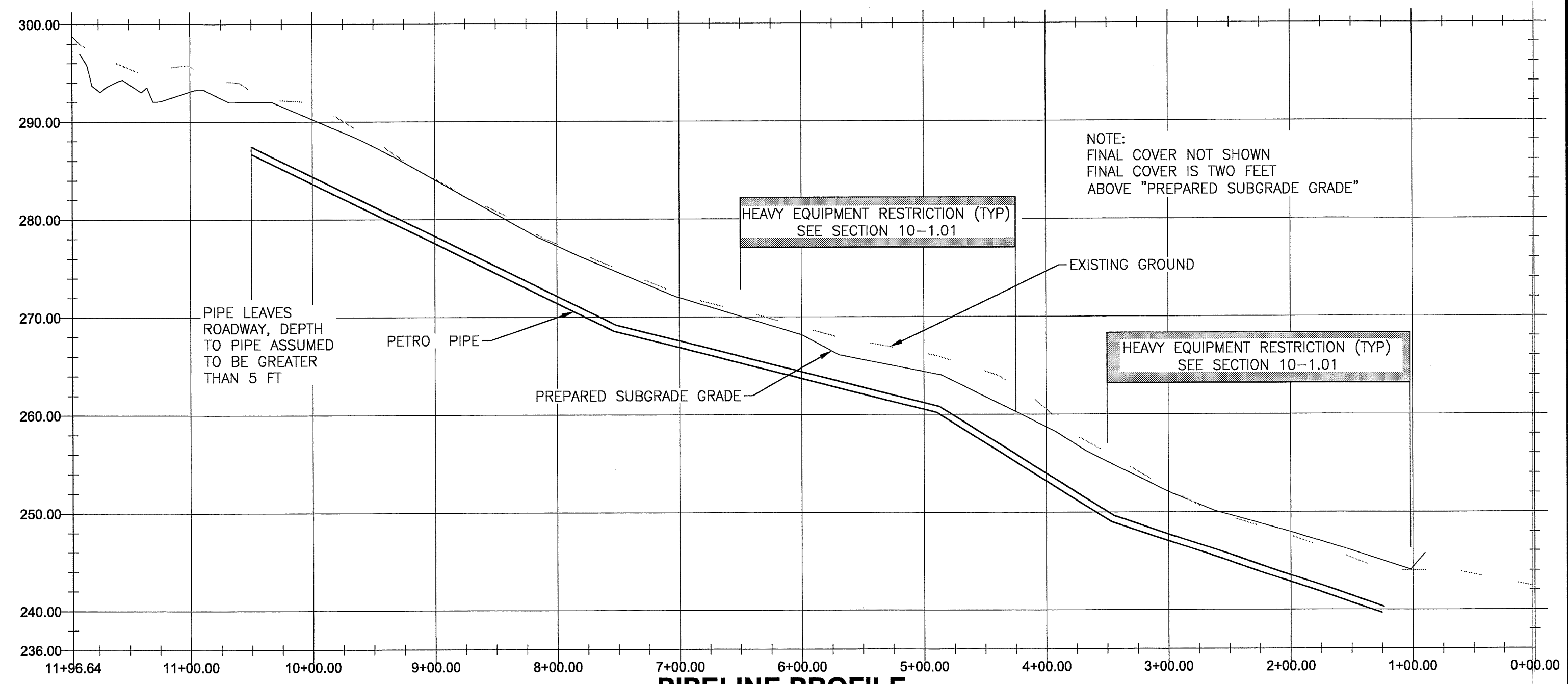


PERIMETER ROAD AND DITCH  
 DETAIL 7  
 1 INCH = 2 FT

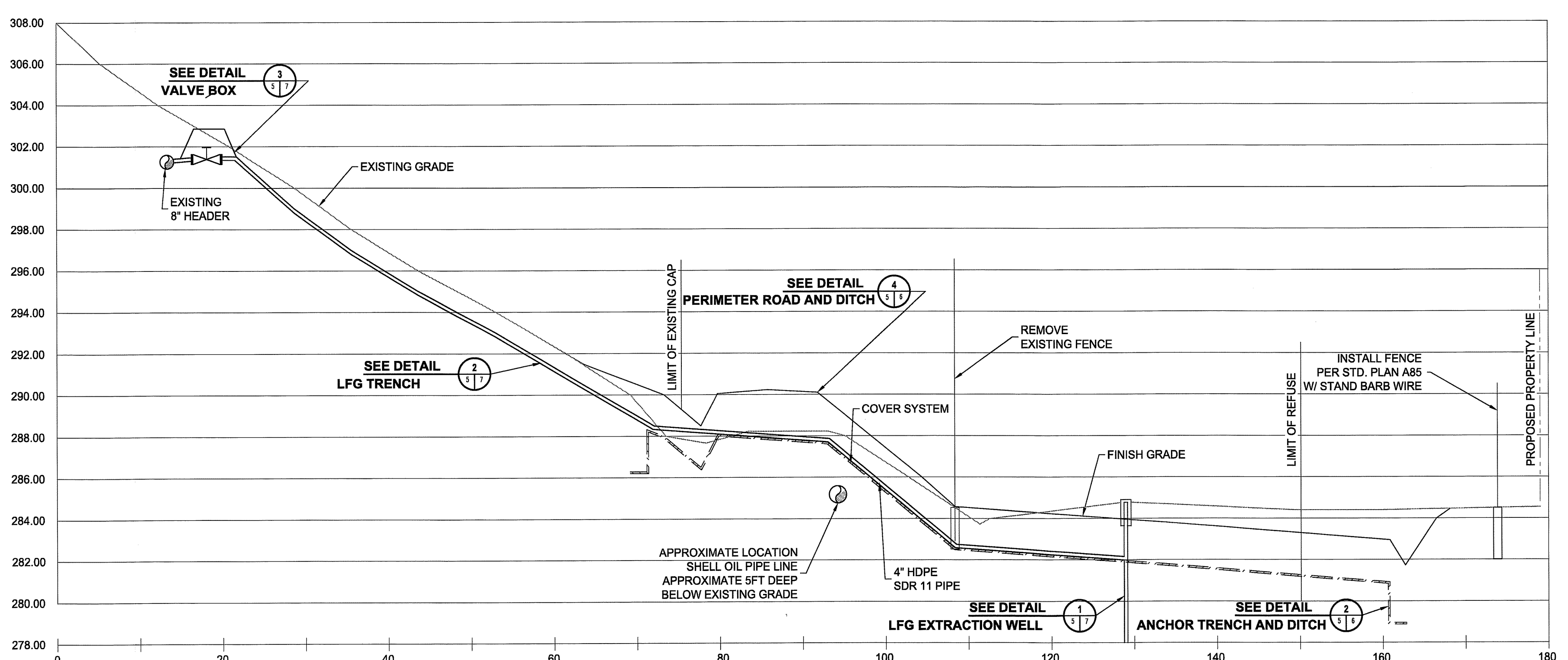
PREPARED UNDER THE RESPONSIBLE CHARGE OF: 				DESIGNED BY: / DATE ES 6/7/12		EXTENSION OF CLOSURE CAP CORRAL HOLLOW SANITARY LANDFILL	
DO NOT USE THIS DRAWING FOR CONSTRUCTION UNLESS STAMPED AND SIGNED BY A CALIFORNIA REGISTERED CIVIL ENGINEER.				DRAWN BY: / DATE ES 6/7/12		DETAILS	
0 7/24/2012 ES FC ISSUED FOR BID				CHECKED BY: / DATE FC 6/7/12		DATE: 6/7/2012 SCALE: AS SHOWN PROJECT NO. 143515 DRAWING NO. 6 OF 8	
REVISIONS				APPROVED BY: DATE DT 6/7/12		REVISIONS	



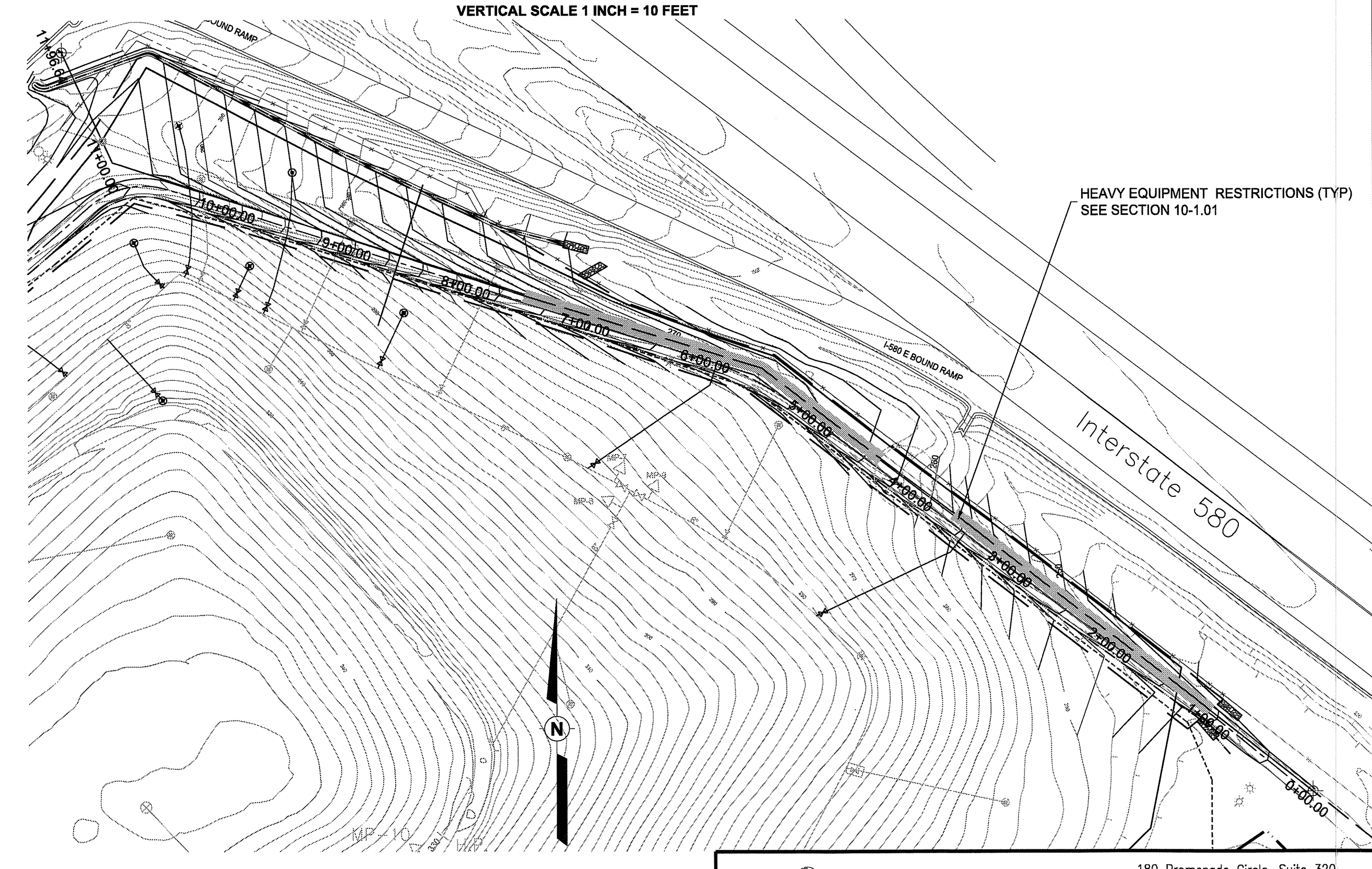
**PERIMETER ROAD ALIGNMENT PROFILE**  
HORIZONTAL SCALE 1 INCH = 100 FEET  
VERTICAL SCALE 1 INCH = 10 FEET



**PIPELINE PROFILE**  
HORIZONTAL SCALE 1 INCH = 80 FEET  
VERTICAL SCALE 1 INCH = 10 FEET



**TYPICAL SECTION**  
HORIZONTAL SCALE 1 INCH = 10 FEET  
VERTICAL SCALE 1 INCH = 4 FEET



TOPOGRAPHIC INFORMATION SHOWN IS DERIVED FROM PHOTOGRAMMETRIC MAPPING PERFORMED DATED 4-5-1997



**Shaw Shaw Environmental, Inc.**  
180 Promenade Circle, Suite 320  
Sacramento, California 95834  
Phone (916) 928-3300  
Fax (916) 565-4356

PREPARED UNDER THE RESPONSIBLE CHARGE OF:



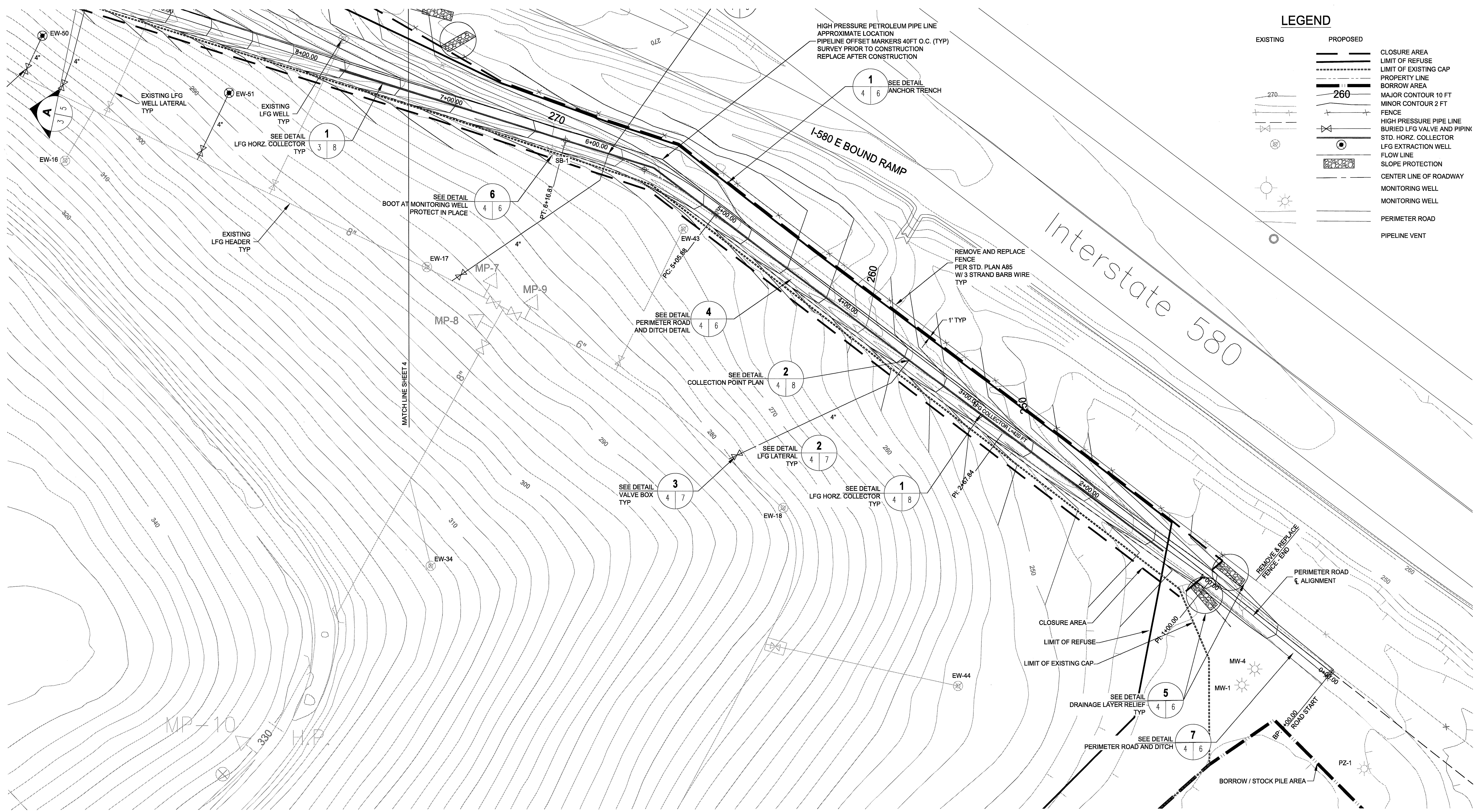
DO NOT USE THIS DRAWING FOR CONSTRUCTION UNLESS STAMPED AND SIGNED BY A CALIFORNIA REGISTERED CIVIL ENGINEER.

MARK	DATE	BY	CHK'D	DESCRIPTION/ISSUE
0	7/24/2012	ES	FC	ISSUED FOR BID
REVISIONS				

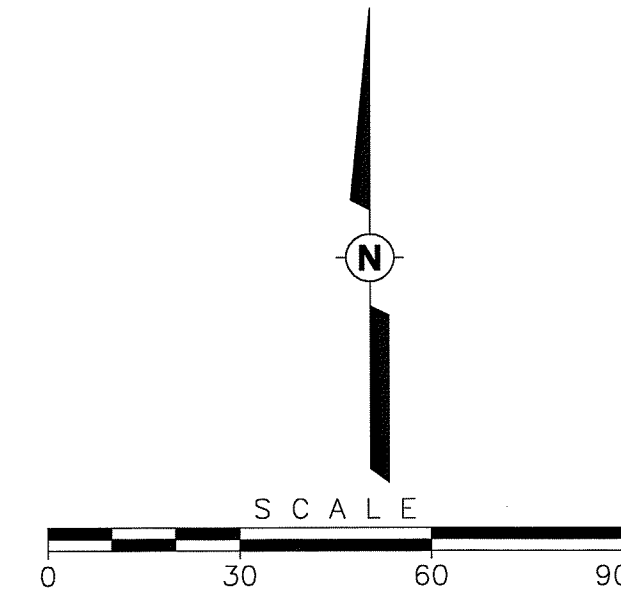
DESIGNED BY: / DATE ES 6/7/12	EXTENSION OF CLOSURE CAP CORRAL HOLLOW SANITARY LANDFILL			
DRAWN BY: / DATE ES 6/7/12	CROSS SECTION & PROFILE			
CHECKED BY: / DATE FC 6/7/12				
APPROVED BY: DATE DT 6/7/12	DATE: 6/7/2012	SCALE: AS SHOWN	PROJECT NO. 143515	DRAWING NO. 5 OF 8

SV5037

Environmental IMAGE Files: California\Woy\JPC 3515-SAN JOAQUIN\CORRAL HOLLOW\143515-sheet-3,4,5-closure plan.dwg User: eric.schneider Jun 22, 2012 - 9:16am



TOPOGRAPHIC INFORMATION SHOWN IS DERIVED FROM PHOTOGRAMMETRIC MAPPING PERFORMED DATED 4-5-1997



PREPARED UNDER THE RESPONSIBLE CHARGE OF:  
  
 DO NOT USE THIS DRAWING FOR CONSTRUCTION UNLESS STAMPED AND SIGNED BY A CALIFORNIA REGISTERED CIVIL ENGINEER.

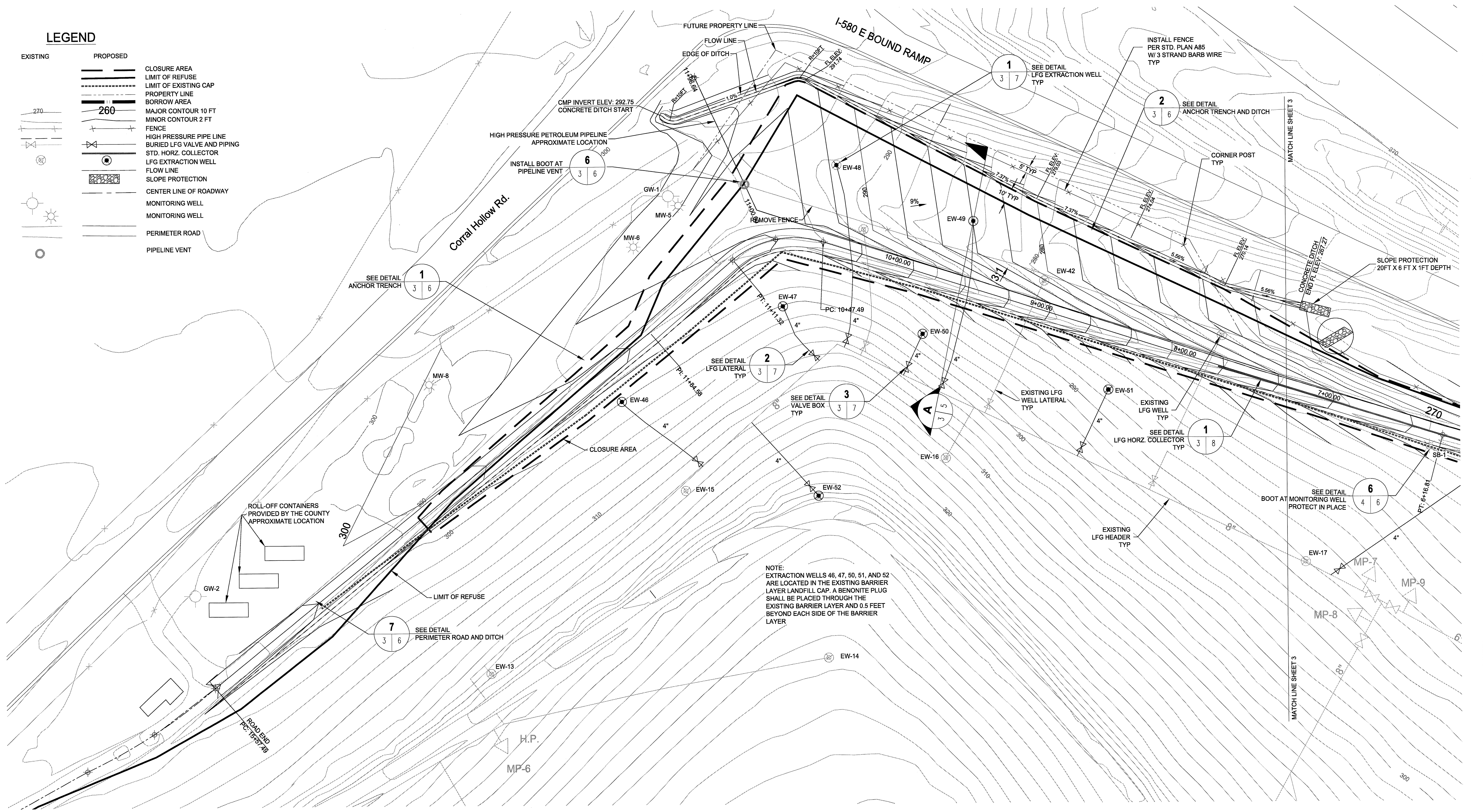
MARK	DATE	BY	CHK'D	DESCRIPTION/ISSUE
0	7/24/2012	ES	FC	ISSUED FOR BID
REVISIONS				

**Shaw Environmental, Inc.**  
 180 Promenade Circle, Suite 320  
 Sacramento, California 95834  
 Phone (916) 928-3300  
 Fax (916) 565-4356

DESIGNED BY: / DATE ES 6/7/12	EXTENSION OF CLOSURE CAP CORRAL HOLLOW SANITARY LANDFILL
DRAWN BY: / DATE ES 6/7/12	
CHECKED BY: / DATE FC 6/7/12	FINAL GRADING PLAN
APPROVED BY: DATE DT 6/7/12	DATE: 6/7/2012
SCALE: AS SHOWN	PROJECT NO. 143515
DRAWING NO. 4 OF 8	

**LEGEND**

EXISTING	PROPOSED	DESCRIPTION
(Symbol)	(Symbol)	CLOSURE AREA
(Symbol)	(Symbol)	LIMIT OF REFUSE
(Symbol)	(Symbol)	LIMIT OF EXISTING CAP
(Symbol)	(Symbol)	PROPERTY LINE
(Symbol)	(Symbol)	BORROW AREA
(Symbol)	(Symbol)	MAJOR CONTOUR 10 FT
(Symbol)	(Symbol)	MINOR CONTOUR 2 FT
(Symbol)	(Symbol)	FENCE
(Symbol)	(Symbol)	HIGH PRESSURE PIPE LINE
(Symbol)	(Symbol)	BURIED LFG VALVE AND PIPING
(Symbol)	(Symbol)	STD. HORIZ. COLLECTOR
(Symbol)	(Symbol)	LFG EXTRACTION WELL
(Symbol)	(Symbol)	FLOW LINE
(Symbol)	(Symbol)	SLOPE PROTECTION
(Symbol)	(Symbol)	CENTER LINE OF ROADWAY
(Symbol)	(Symbol)	MONITORING WELL
(Symbol)	(Symbol)	MONITORING WELL
(Symbol)	(Symbol)	PERIMETER ROAD
(Symbol)	(Symbol)	PIPELINE VENT



NOTE:  
EXTRACTION WELLS 46, 47, 50, 51, AND 52  
ARE LOCATED IN THE EXISTING BARRIER  
LAYER LANDFILL CAP. A BENONITE PLUG  
SHALL BE PLACED THROUGH THE  
EXISTING BARRIER LAYER AND 0.5 FEET  
BEYOND EACH SIDE OF THE BARRIER  
LAYER

TOPOGRAPHIC INFORMATION SHOWN IS DERIVED FROM PHOTOGRAMETRIC MAPPING PERFORMED DATED 4-5-1997

SU5039

PREPARED UNDER THE RESPONSIBLE CHARGE OF:

DO NOT USE THIS DRAWING FOR CONSTRUCTION UNLESS STAMPED AND SIGNED BY A CALIFORNIA REGISTERED CIVIL ENGINEER.

MARK	DATE	BY	CHK'D	DESCRIPTION/ISSUE
0	7/24/2012	ES	FC	ISSUED FOR BID
REVISIONS				

**Shaw® Shaw Environmental, Inc.**  
180 Promenade Circle, Suite 320  
Sacramento, California 95834  
Phone (916) 928-3300  
Fax (916) 565-4356

DESIGNED BY: / DATE  
ES 6/7/12

DRAWN BY: / DATE  
ES 6/7/12

CHECKED BY: / DATE  
FC 6/7/12

APPROVED BY: DATE  
DT 6/7/12

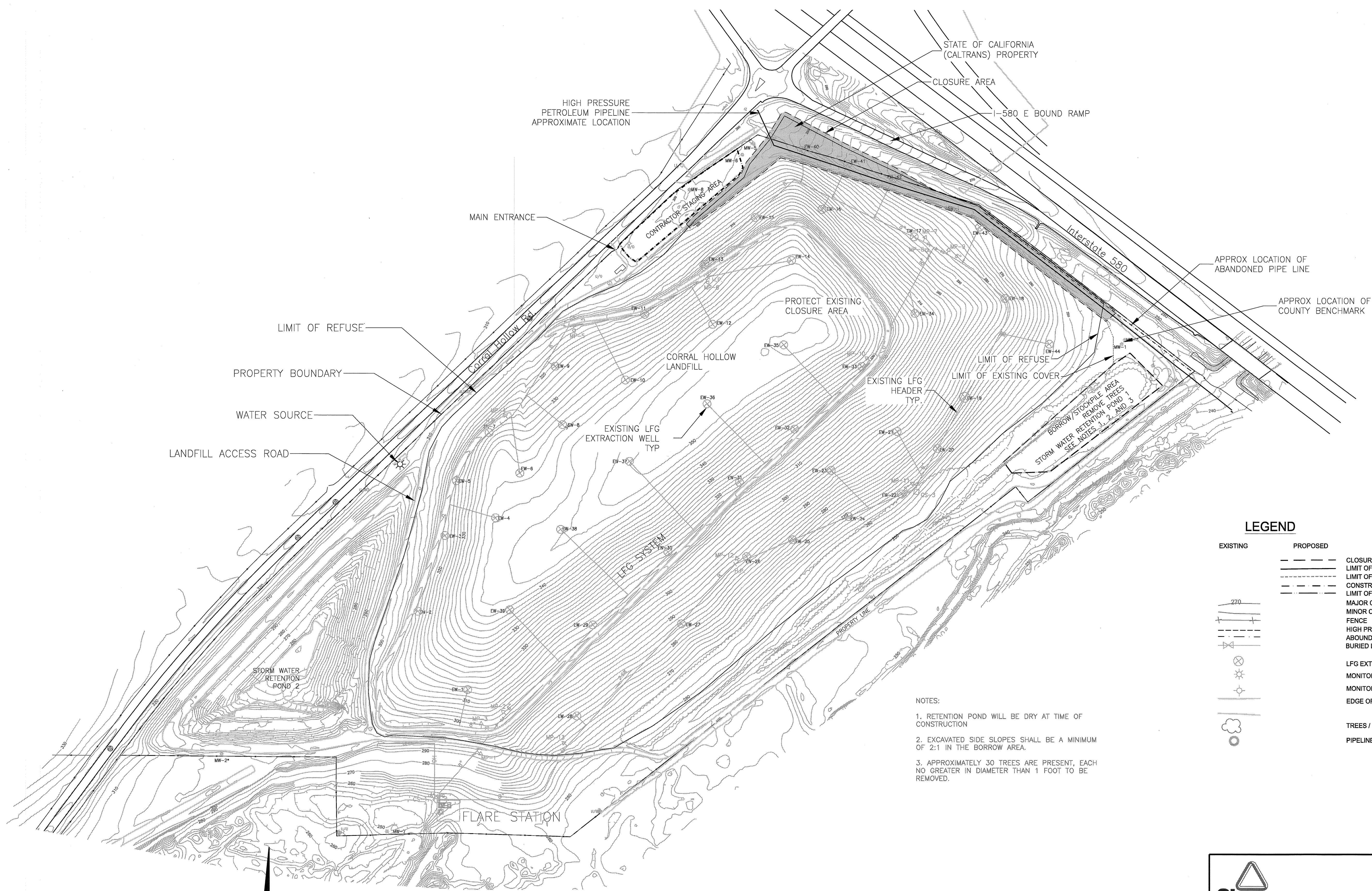
EXTENSION OF CLOSURE CAP  
CORRAL HOLLOW SANITARY LANDFILL

**FINAL GRADING PLAN**

SCALE: AS SHOWN

PROJECT NO. 143515

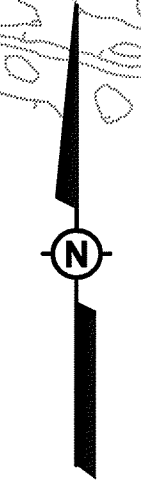
DRAWING NO. **3 OF 8**



**LEGEND**

EXISTING	PROPOSED	
---	---	CLOSURE AREA
---	---	LIMIT OF REFUSE
---	---	LIMIT OF EXISTING COVER
---	---	CONSTRUCTION STAGING AREA
---	---	LIMIT OF BORROW AREA
---	---	MAJOR CONTOUR 10 FT
---	---	MINOR CONTOUR 2 FT
---	---	FENCE
---	---	HIGH PRESSURE PIPE LINE
---	---	ABANDONED PIPE LINE
---	---	BURIED LFG VALVE AND PIPING
---	---	LFG EXTRACTION WELL
---	---	MONITORING WELL
---	---	MONITORING WELL
---	---	EDGE OF ROAD
---	---	TREES / BRUSH
---	---	PIPELINE VENT

- NOTES:
- RETENTION POND WILL BE DRY AT TIME OF CONSTRUCTION
  - EXCAVATED SIDE SLOPES SHALL BE A MINIMUM OF 2:1 IN THE BORROW AREA.
  - APPROXIMATELY 30 TREES ARE PRESENT, EACH NO GREATER IN DIAMETER THAN 1 FOOT TO BE REMOVED.



TOPOGRAPHIC INFORMATION SHOWN IS DERIVED FROM PHOTOGRAMETRIC MAPPING PERFORMED DATED 4-5-1997

PREPARED UNDER THE RESPONSIBLE CHARGE OF:



DO NOT USE THIS DRAWING FOR CONSTRUCTION UNLESS STAMPED AND SIGNED BY A CALIFORNIA REGISTERED CIVIL ENGINEER.

MARK	DATE	BY	CHK'D	DESCRIPTION/ISSUE
O	7/24/2012	ES	FC	ISSUED FOR BID
REVISIONS				

**Shaw** Shaw Environmental, Inc.

180 Promenade Circle, Suite 320  
 Sacramento, California 95834  
 Phone (916) 928-3300  
 Fax (916) 565-4356

DESIGNED BY: / DATE  
ES 6/7/12

DRAWN BY: / DATE  
ES 6/7/12

CHECKED BY: / DATE  
FC 6/7/12

APPROVED BY: DATE  
DT 6/7/12

EXTENSION OF CLOSURE CAP  
CORRAL HOLLOW SANITARY LANDFILL

SITE MAP

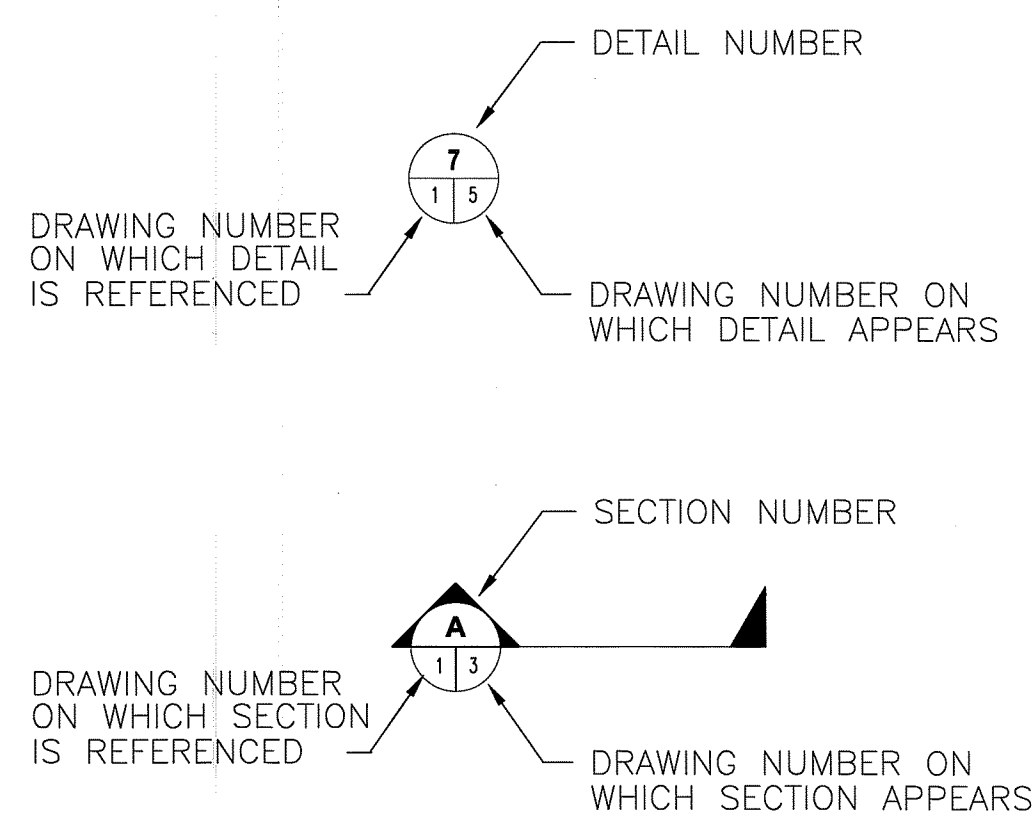
SCALE:	PROJECT NO.	DRAWING NO.
AS SHOWN	143515	2 OF 8

**ABBREVIATIONS**

IN ADDITION TO LISTINGS IN SP A10 AND A10B

CSP	CORRUGATED STEEL PIPE
DIAM.	DIAMETER
E	EASTING
ELEV.	ELEVATION
HDPE	HIGH DENSITY POLYETHYLENE
LFG	LANDFILL GAS
LLDPE	LINEAR LOW DENSITY POLYETHYLENE
MSL	MEAN SEA LEVEL, ZERO ELEVATION FOR LOCAL AREA
NAVD 88	NORTH AMERICAN VERTICAL DATUM OF 1988, GEODETIC DATUM BASED ON MSL AT FATHER POINT/RIMOUSKI, CANADA
N	NORTHING
PC	POINT OF CURVE
PI	POINT OF INTERSECTION
PT	POINT OF TANGENT
NTS	NOT TO SCALE
STD	STANDARD
TYP	TYPICAL

**SYMBOLS**



**SHEET INDEX**

DWG #	DESCRIPTION
1	COVER SHEET
2	SITE MAP
3	FINAL GRADING PLAN
4	FINAL GRADING PLAN
5	CROSS SECTION & PROFILE
6	DETAILS
7	DETAILS
8	DETAILS

**GENERAL NOTES:**

1. THE CONTRACTOR'S ATTENTION IS DIRECTED TO THE PRESENCE OF THE HIGH-PRESSURE PIPELINE WITHIN THE PROJECT AREA. SHELL OIL TECHNICIANS WILL BE PRESENT DURING WORK OVER THE PIPELINE AT NO COST TO THE CONTRACTOR.
2. CERTAIN RESTRICTIONS APPLY TO THE USE OF HEAVY EQUIPMENT OVER THE SHELL OIL PIPELINE AFTER SOIL HAS BEEN REMOVED FROM OVER THIS PIPELINE.
3. CONTRACTOR SHALL OBTAIN ENCROACHMENT PERMIT FROM CALTRANS. THIS PERMIT WILL BE SUPPLEMENTAL TO THE ENCROACHMENT PERMIT OBTAINED BY THE COUNTY FOR THIS WORK.

APPLICABLE STANDARD PLANS:  
A85

THE CONTRACTOR SHALL POSSES A CLASS A LICENSE AT THE TIME THIS CONTRACT IS AWARDED

PROJECT ENGINEER	DATE	CHECKED BY	DATE	APPROVED	DATE
E. SCHEIDER	4/5/12	<i>M. Carroll</i>	10/10/12	<i>Michael Jettling</i>	10/31/12

**COUNTY OF SAN JOAQUIN**

**DEPARTMENT OF PUBLIC WORKS**

**STOCKTON, CALIFORNIA**

**EXTENSION OF CLOSURE CAP  
CORRAL HOLLOW SANITARY LANDFILL**

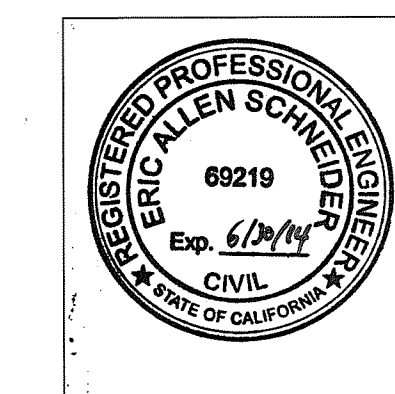
To Be Supplemented by Standard Plans Dated May 2006

COUNTY OF SAN JOAQUIN

Submitted NOVEMBER 5, 2012

*Thomas M. Gau*

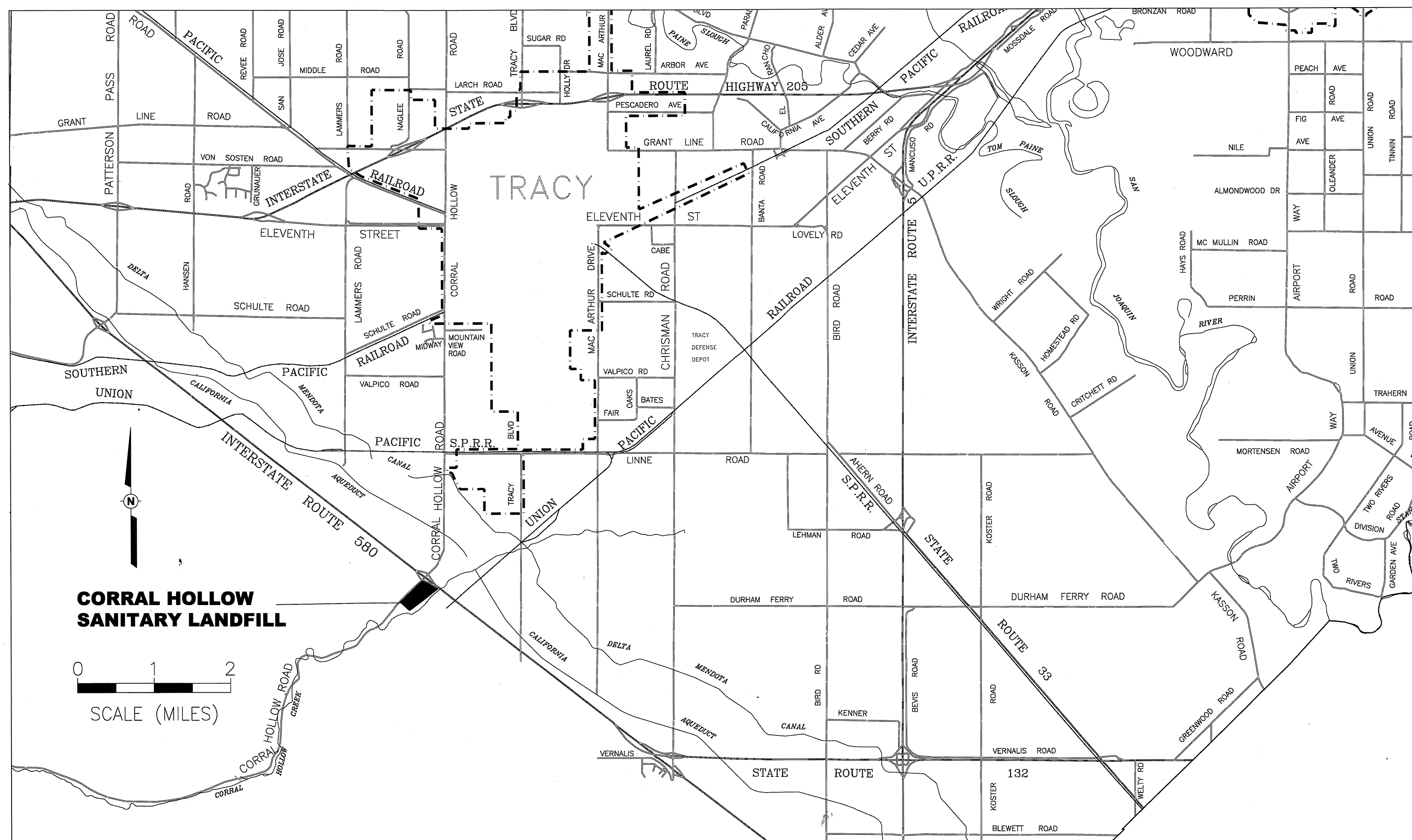
THOMAS M. GAU  
DIRECTOR OF PUBLIC WORKS



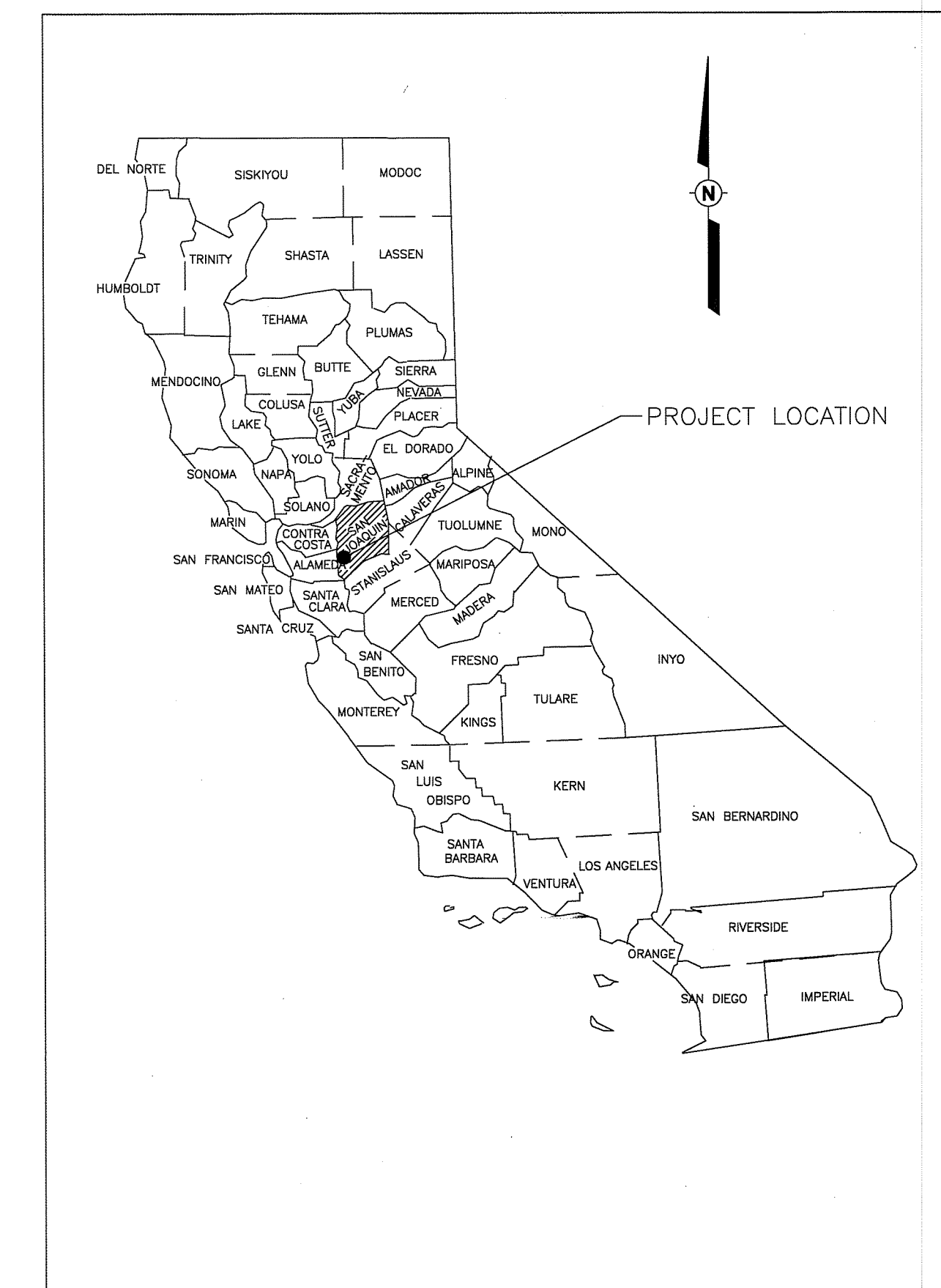
JUNE 20, 2012  
Date

*Eric Schneider*

ERIC SCHNEIDER, P.E.  
P.E. 69219  
PROJECT MANAGER  
SHAW ENVIRONMENTAL, INC.



**PROJECT LOCATION**



**VICINITY MAP**

NO.	REVISION	BY	DATE
0	ISSUED FOR BID	ES	7/24/2012

DWG. NO.	<b>1</b>
Drawing 1 of 8	
PROJECT NO.	143515

SU5041